



***Model NV-562***

***User Manual***



**Digital Spectrum**  
Incorporated

Digital Spectrum Solutions, Inc.  
Irvine, Ca. 92614  
949-252-1111  
[www.dsicentral.com](http://www.dsicentral.com)  
1862-N5-P0-0



Congratulations! You are the proud owner of a NuVue™ Digital Picture Frame. Boasting high-quality image resolution the NuVue™ is the perfect product for displaying your favorite digital photos and video clips. With its ease of use and configuration, you can now display all your favorite pictures or video files for everyone to see!

## Notes

## Package Contents

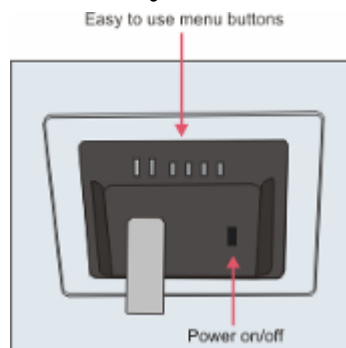
Before using the Digital Picture Frame, be sure to check that all accessories contained in the package are present:

- A. Digital Picture Frame with removable stand
- B. AC Adapter
- C. USB Cable
- D. Stereo Headphones
- E. User Manual


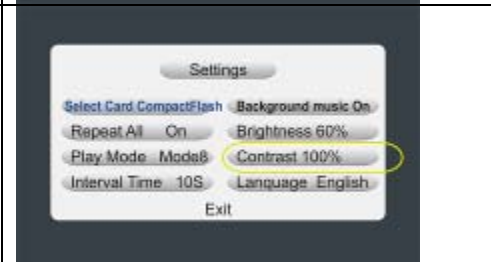
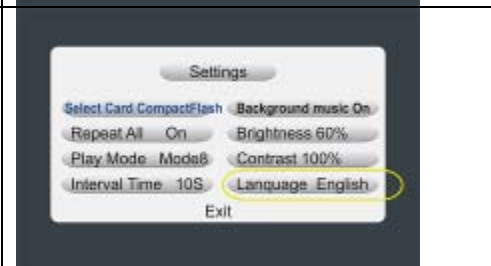
## Features

- ✓ High resolution 5.6" TFT display
- ✓ Displays images in slideshow format
- ✓ Plays MP3 Audio
- ✓ Plays MOV Video clips
- ✓ Plays Audio slideshow
- ✓ Built-in Multi-format Card Reader CF/MS/ SD/XD/MMC
- ✓ USB Port for PC connection
- ✓ Simple operation with AutoPlay features
- ✓ Sleek decorative design

## Button Layout

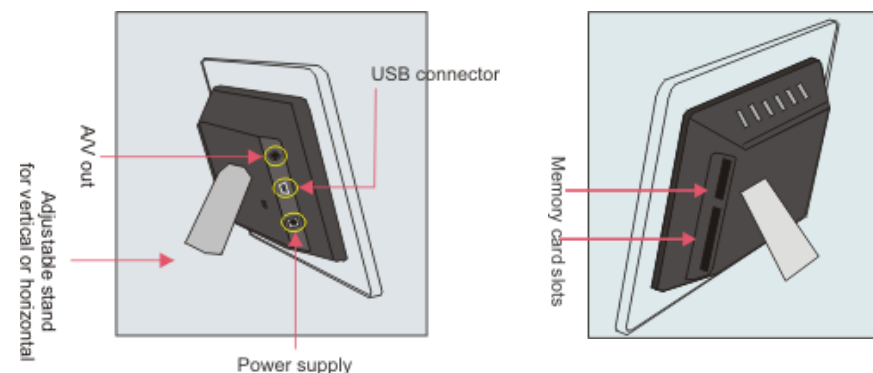


Button	Description
<b>ENTER</b>	Play & Enter
<b>STOP/ESC</b>	Stop, Pause & Esc
<b>↑ UP</b>	Up & Previous
<b>↓ DOWN</b>	Down & Next
<b>← LEFT</b>	Left, REV & Rotate
<b>⇒ RIGHT</b>	Right, FF & Rotate

<p><b>Brightness</b> – Used to adjust the brightness based on the local lighted environment. The number is percentage of full brightness.</p>	
<p><b>Contrast</b> – Used to adjust the contrast based on the local light environment. The number is percentage of full contrast.</p>	
<p><b>Language</b> – Used to select available languages</p>	

## Connections

Use the guide below for location of media slots, power connection, USB, and TV Out



## Connecting to the USB Port

The USB port is for connecting the NuVue to a PC. When connected, the PC will recognize new USB hardware. To the PC the digital frame looks like several media slot drives, each with their own letter. You can use Explorer to easily drag-n-drop images from the PC to the media inserted in the digital frame.

## Specifications

<b>Model</b>	NV-562
<b>Unit Size</b>	162 (H) x 212 (W) x 50(D) mm
<b>Display Area</b>	84.708(H) x 113.28(W) mm
<b>Resolution</b>	320x234
<b>Brightness</b>	250cd/m <sup>2</sup> max.
<b>Contrast ratio</b>	150:1
<b>Viewing angle</b>	45/45 (l/r) 15/35(B/T)
<b>Input voltage:</b>	AC110—240V(50HZ—60HZ)
<b>Unit Input Voltage</b>	12VDC @1.5A
<b>Working Temperature</b>	0°C – 50°C
<b>Unit Weight</b>	0.70KG
<b>Formats</b>	JPG/JPEG/MP3/MOV
<b>Media</b>	CF/SD/XD/MMC/MS, USB
<b>Max Images</b>	Based on media capacity

## Operation and Navigation

When Power is first turned On, the Main page is displayed. Use the navigation buttons to locate the desired function. Use the **Enter** button to select.



### Photo

When Photo is selected, the contents will be displayed in thumbnail view, with six images displayed at a time. Use the navigation buttons to locate the desired image to Play and depress the Enter button to play. The unit will play the selected image. To play a slideshow, depress the **Enter** button again. This will cause the unit to activate Sequential Play where all image content is played in slideshow format. Use the **Stop** button to go back.

### Music





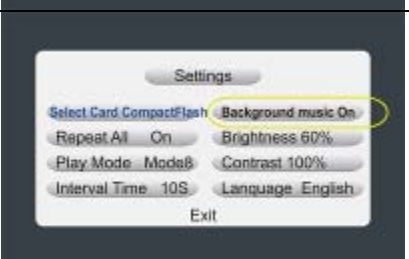
When music is selected, the display will present the list of music on the media by title and begin to play the current selected track. Use the navigation keys to locate the desired track. Press **Enter** to play. Use the **Stop** button to go back. Use the headphones for listening.

### Video

In a similar manner when Video is selected, the display presents a list of the video clips by title. Use the navigation buttons to locate the desired video. Press **Enter** to play. Use the **Stop** button to go back.

### Settings

The Settings Menu is used to view and change useful slideshow and operating characteristics to customize the look and operation of slideshows. These settings are defined and explained below. Use the **Stop** button to go back. Use the navigation buttons to locate the desired function. The function that is currently selected is highlighted in **Blue**. Press **Enter** to View/Edit. The function will change highlight to **Red**. Use the Up/Down buttons to change the value. When complete, press the **Enter** button to Save. The function will confirm by changing back to **Blue**.

Function	Sample Screen
<b>Select Card</b> – Used to select a specific media card when more than one is inserted.	
<b>Repeat All</b> – When On, slideshows will repeat. Ehwn Off, a slideshow will run one time.	
<b>Transitions</b> – Used to set transition style for the slideshow. Also included is a Random selection which will utilize all transition types randomly between slides.	
<b>Interval Time</b> – Used to select the display interval. The time is selectable from 1 – 60 seconds.	
<b>Background Music</b> – When On, MP3 music on the media will be played during a slideshow.	

## Free Manuals Download Website

<http://myh66.com>

<http://usermanuals.us>

<http://www.somanuals.com>

<http://www.4manuals.cc>

<http://www.manual-lib.com>

<http://www.404manual.com>

<http://www.luxmanual.com>

<http://aubethermostatmanual.com>

Golf course search by state

<http://golfingnear.com>

Email search by domain

<http://emailbydomain.com>

Auto manuals search

<http://auto.somanuals.com>

TV manuals search

<http://tv.somanuals.com>