

Troubleshooting

1. The CD-ROM does not start automatically?
You can start the wizard on the CD-ROM manually. Go to Start, Run and enter 'X:\driver\windows\setup.exe'. If your CD or DVD-ROM player has a different drive letter, use this drive letter instead of X in this example.
2. My computer can not connect to other wireless devices?
 - a. Check if the wireless signal is strong enough. You can try moving your laptop or computer to check if the signal improves.
 - b. Check if the SSID on the computer is the same as that of your wireless network.
 - c. Check if the correct network type has been set. If you connect to a router or access point the network type should be set to 'Infrastructure'. If you are connecting directly to another wireless network adapter it should be set to 'Ad-Hoc'.
 - d. Check if your wireless network card has received a valid IP address.
Windows 98SE/ ME: Click 'Start', 'run' and type 'command'.
Windows 2000/ XP: Click 'Start', 'run' and type 'cmd'.
Enter the command 'ipconfig' and press enter. Verify that the shown address is within range of your router or access point (the first 6 digits should be the same).
2. I do have a connection with my secured wireless network but no data is being transmitted.
 - a. Verify that you have entered the correct security key. The security key you enter has to be identical to the key you entered in your router or access point.
Every kind of key has to meet certain specific requirements:

WEP 64 /128 bit encryption keys consist of 10 or 26 hexadecimal characters, you can use all digits but only the letters A through F.

Example 64 bit key: AAB1C231AF

Example 128 bit key: AAB1C231AFAAB1C231AFDD11EE

WPA-PSK encryption keys can contain 8 to 63 characters and are case-sensitive. WPA-PSK keys can not contain punctuation marks.

Example WPA-PSK key: JDoe2006

- b. Verify you have chosen the correct type of security. The security type should be the same as on your router or access point.
 - c. Temporarily remove firewalls and virus scanners; they can block your network connection.
3. My wireless network adapter is not recognized by Windows?
 - a. Try connecting the USB adapter to a different USB port.
 - b. Update your system drivers for example by using Windows Update (<http://www.windowsupdate.com>).

Support

You can find a lot of information including FAQ's and drivers for all E-Tech products on our website: <http://www.e-tech.nu>



E-Tech 54MBit wireless USB adapter WGUS03 – Quick install guide



Congratulations with the purchase of your 54MBit wireless adapter!
This wireless adapter allows for a fast connection to your network without using cables.

This quick install guide covers the following topics:

- Package contents.
- System requirements.
- Before you begin.
- Installing the wireless network adapter on Windows 98SE/ ME/ 2000/ XP.
- Configuring the wireless connection.
- Configuring wireless security.
- Troubleshooting.

Package contents

- One WGUS03 54MBit wireless network adapter.
- One English quick install guide.
- One Dutch quick install guide.
- One driver CD-ROM.
- One USB cable.

System requirements

- Your computer must be running at least Windows 98SE as an operating system.
- Your computer needs to have one free USB port.
- In order to be able to use the CD-ROM your computer needs to be equipped with a CD-ROM or DVD drive.

Before you begin

- You will need to install the driver before connecting the wireless adapter. Connect the wireless adapter when the installer software requests you to do so.

FOR USE IN									
NL	B	L	F	E	H				
CH	P	GB			D	A			
S	DK	I	N	FIN	IRL				



AM20070122A

Installing the wireless network adapter on Windows 98SE/ ME/ 2000/ XP

Follow the instructions below to install the driver:

1. Insert the CD-ROM into the CD-ROM or DVD drive.
The CD-ROM will start automatically and show the installer screen (see troubleshooting hint 1 if the CD-ROM does not start automatically).
2. Click 'Yes' to agree with the license agreement.
3. Select the desired method from the options given then click 'Next' to continue.

You will use this software to manage your wireless connection. This includes security for the wireless network.

Ralink configuration tool

The wireless settings will be managed using the software provided by the manufacturer.

Microsoft Zero Configuration Tool

The wireless settings will be managed by Windows. This option is recommended for users with Windows XP Service Pack 1 or higher.

4. Choose the desired mode for your wireless network and click 'Next' to continue.

Optimize for WiFi mode

This is the default operating mode for your wireless network adapter. This mode is recommended if your router or access point does not support the higher speeds of the performance mode.

Optimize for performance mode (TX Burst)

This mode further increases the speed of your wireless connection. The connection between your computer and router or access point can be increased by up to 30%.

5. Connect your wireless adapter to your computer when the software requests it. This can take between 3 to 5 minutes.
6. Click 'Finish' to end the installation.
7. Reboot the computer to complete the installation.

Configuring the wireless connection

Follow the instructions below to configure your wireless connection.

Windows XP Service Pack 1 and 2:

Starting with Windows XP Service Pack 1 Windows has built-in support for wireless networking. Windows will find your wireless network automatically and will report that through a bubble in the lower-right corner of the screen (near the clock).

You will notice a new icon consisting of a computer with an antenna located at the lower-right part of the screen.

1. Right click on the icon then left click 'View available wireless networks' to view the list of available wireless networks.
2. If your wireless network is not shown in the list you can click 'Refresh' in the top left of your screen.
3. When your wireless network is found you can select it from the list and double click it to connect with it.

After everything has been configured properly your computer will receive an IP address and you will be able to access the internet.

Windows 98SE/ME, 2000 and XP (without Service Packs) using the monitor utility

Windows 98SE/ME, 2000 and Windows XP (without Service Packs) do not have built-in support for wireless networking. You can configure your wireless connection through the software provided with the wireless adapter. The icon for the wireless management software is located at the lower-right part of the screen.

1. Right click the icon then left click 'Launch config utilities'.
2. Click the 'Site Survey' tab and click the 'Rescan' button to search for wireless networks.
3. Select your network by left clicking it then click the 'Connect' button to connect with your wireless network.

Configuring wireless security

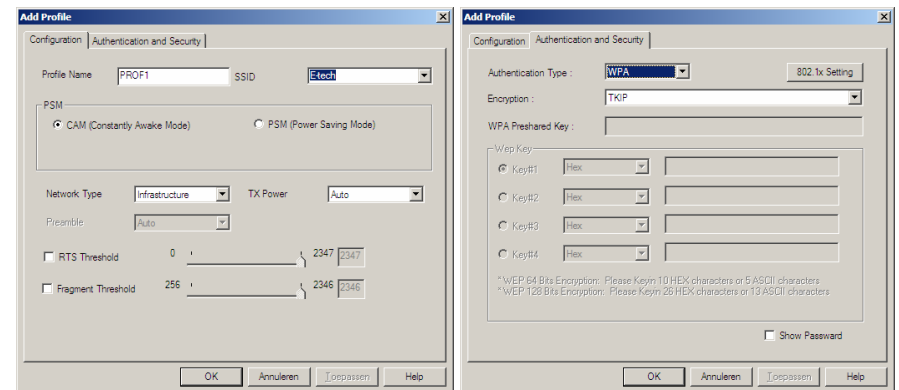
If you have setup security on your router or access point you will also have to set it up on your computer. After setting up security in your router or access point you can temporarily write down the security key. You can enter the security key when Windows or the provided software asks for it.

Windows XP Service Pack 1 and higher (using Windows Wireless Zero):

When you connect to a secure wireless network Windows will ask you to enter the security key. The security key you enter has to be identical to the key you entered in your router or access point.

Windows 98SE/ ME/ 2000/ XP without Service Packs (using the monitor utility):

1. Right click the icon then left click 'Launch config utilities'.
2. Click the 'Profile' tab then click 'Add'.
3. Enter the required information and select your network from the dropdown box.
4. Click the 'Authentication and security' tab and select the security type near 'Authentication type', enter your key then click 'OK'.
5. Select your profile in the 'Profile' tab then click the 'Activate' button.
6. Click 'OK' to close the screen.



After everything has been configured properly your computer will receive an IP address and you will be able to access the internet.

Free Manuals Download Website

<http://myh66.com>

<http://usermanuals.us>

<http://www.somanuals.com>

<http://www.4manuals.cc>

<http://www.manual-lib.com>

<http://www.404manual.com>

<http://www.luxmanual.com>

<http://aubethermostatmanual.com>

Golf course search by state

<http://golfingnear.com>

Email search by domain

<http://emailbydomain.com>

Auto manuals search

<http://auto.somanuals.com>

TV manuals search

<http://tv.somanuals.com>