



DESCRIPTION

- Permanent installation system, selectable single-amp or bi-amp
- Rotatable HF horn provides mounting options

The MK2300 Series of 2-way, high output, trapezoidal loudspeakers are designed as main PA for smaller venues, including houses of worship, auditoriums/theaters, A/V systems, hotel ballrooms, and meeting rooms. The Series is also ideal for distributed or fill purposes in larger venues, including houses of worship, auditorium/theaters, arenas, stadiums, nightclubs, and themed-entertainment complexes.

To meet the design goals for the intended applications, EAW engineers developed a new, high performance, 3-inch voice coil, compression driver mating it to a selection of six different HF horns with patterns from 60° x 45° to 120° x 60°. The horns are as large as the enclosure size allows to maintain consistent directivity throughout the HF passband. A 3-inch voice coil, 12 inch LF driver, was designed to complement the sonic character and output of the HF driver. All MK2300 models are carefully voiced to sound similar, permitting diverse horn patterns to be mixed throughout an installation while maintaining the same sonic quality. The results are cleaner, usable, high-fidelity output to significantly higher levels than is normally expected from loudspeakers of this size and price.

Single-amp and bi-amp operating modes are user-selectable. In single-amp mode, the beamwidth-matching passive crossover is designed for even power response through crossover, low power losses, and high power handling. In bi-amp mode a digital signal processor (DSP) is required, providing sophisticated processing to maximize performance.

Foam-backed grilles hide the drivers from view for pleasing aesthetics. Thirteen mounting points allow enclosures to be mounted in virtually any configuration. Additional mounting points mate with OmniMount® 120.0 Series or similar brackets. Standard colors are black and white. Other colors can be specified as a special order items.

The MK2300 are the smaller companions to the MK5300 Series loudspeakers. Enclosures for both series are the same height facilitating installation where more than one horn pattern and/or type of loudspeaker capability is needed. Six Year Warranty.

2-WAY FULL-RANGE 120° x 60°

See **NOTES TABULAR DATA** for details

CONFIGURATION

Subsystem

| | Transducer | Loading |
|----|--|-------------|
| LF | 1x 12 in cone | Vented |
| HF | 1x 1.4 in exit, 3 in voice coil compression driver | Horn-loaded |

Operating Mode

| | Amplifier Channels | External Signal Processing |
|------------|--------------------|----------------------------|
| Single-amp | LF/ HF | High pass filter |
| Bi-amp | LF, HF | DSP w/2-way filters |

PERFORMANCE ¹

Operating Range 70 Hz to 20 kHz

Nominal Beamwidth (rotatable)

| | |
|------|------|
| Horz | 120° |
| Vert | 60° |

Axial Sensitivity (whole space SPL)

| | | |
|-------|--------|-------------------|
| LF/HF | 97 dB | 70 Hz to 20 kHz |
| LF | 97 dB | 70 Hz to 1820 Hz |
| HF | 107 dB | 1290 Hz to 17 kHz |

Input Impedance (ohms)

| | Nominal | Minimum |
|-------|---------|---------------|
| LF/HF | 8 | 7.2 @ 178 Hz |
| LF | 8 | 7.1 @ 290 Hz |
| HF | 8 | 8.5 @ 6050 Hz |

High Pass Filter

High Pass =>60 Hz, 12 dB/octave Butterworth

Accelerated Life Test ²

| | | |
|-------|------|---------------|
| LF/HF | 69 V | 600 W @ 8 ohm |
| LF | 69 V | 600 W @ 8 ohm |
| HF | 35 V | 150 W @ 8 ohm |

Calculated Axial Output Limit (whole space SPL)

| | Average | Peak |
|-------|---------|--------|
| LF/HF | 125 dB | 131 dB |
| LF | 125 dB | 131 dB |
| HF | 129 dB | 135 dB |

ORDERING DATA

| Description | Part Number |
|--|-------------|
| MK2326 2-Way Full-Range Loudspeaker Black | 0013385 |
| MK2326 2-Way Full-Range Loudspeaker White | 0013751 |
| MK2326 2-Way Full-Range Loudspeaker Black-WP | 0013778 |

Optional Accessories

| | |
|--|---------|
| Eyebolt/Forged Shoulder (3/8-16 x 1.25 in) | 104001 |
| MK2/5000 U-Bracket Black | 0007869 |
| MK2/5000 U-Bracket White | 0015076 |

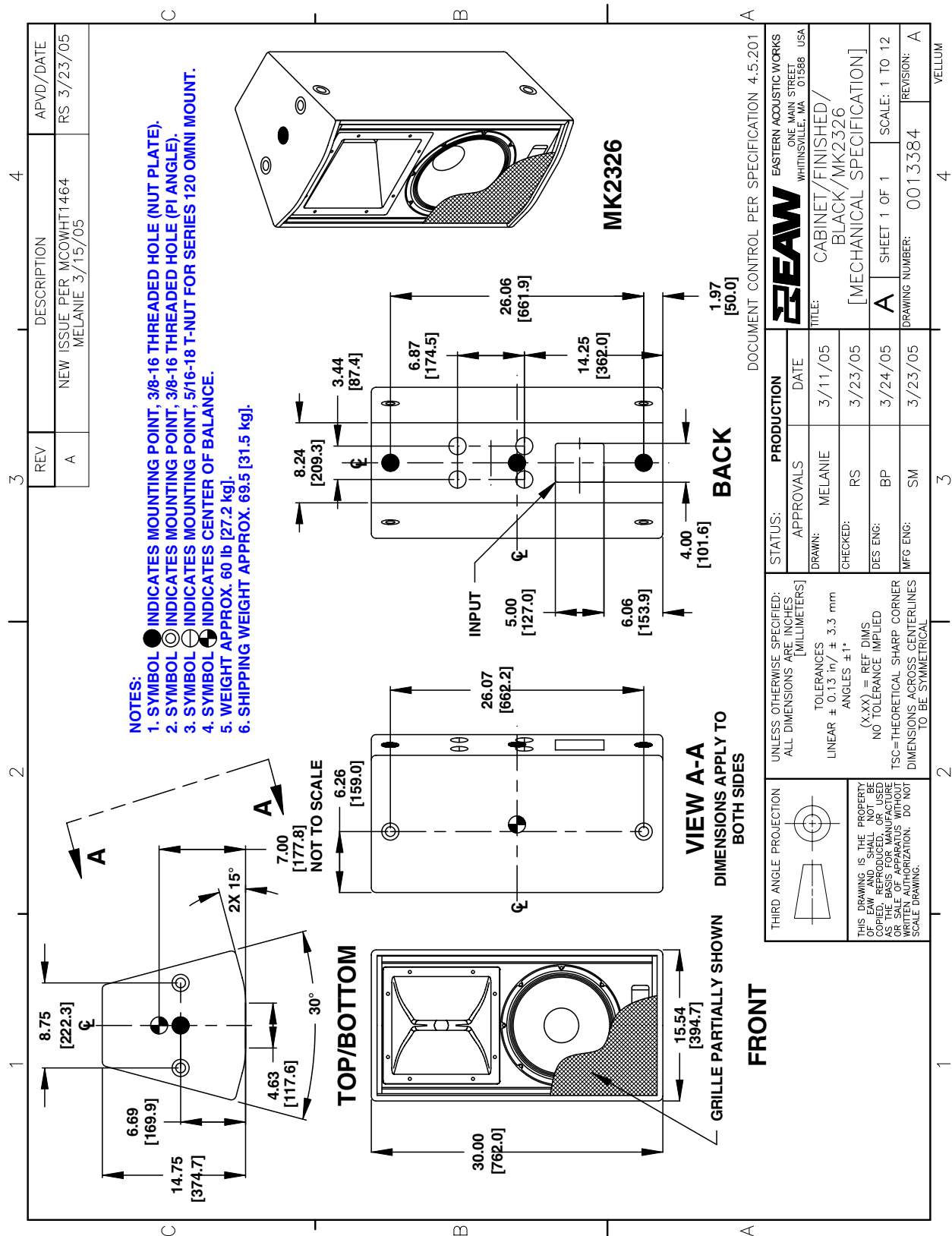
¹ To achieve specified performance, the listed external signal processing with EAW-provided settings is required.

² For recommendations to select power amplifier size refer to: "HOW MUCH AMPLIFIER POWER DO I NEED?" on the EAW web site.



ENCLOSURE

| | |
|----------|-------------------------------------|
| Material | Baltic birch plywood |
| Finish | Wear resistant textured black paint |
| Grille | Powder-coated perforated steel |



NOTES: This drawing has been reduced. Do not scale.
 For WP version, add 0.25 in / 6.4 mm to the outside dimensions = 0.125 in / 3.2 mm all around.

Free Manuals Download Website

<http://myh66.com>

<http://usermanuals.us>

<http://www.somanuals.com>

<http://www.4manuals.cc>

<http://www.manual-lib.com>

<http://www.404manual.com>

<http://www.luxmanual.com>

<http://aubethermostatmanual.com>

Golf course search by state

<http://golfingnear.com>

Email search by domain

<http://emailbydomain.com>

Auto manuals search

<http://auto.somanuals.com>

TV manuals search

<http://tv.somanuals.com>