



# SPECIFICATIONS UB52

## DESCRIPTION

A 2-way full range system (passive LF/HF crossover) in a compact, vented rectangular enclosure. Includes two 5.25 in woofers and a 1 in exit compression driver on a 90° x 60° constant directivity horn. It includes two 1/4"-20 threaded mounting/suspension points. Six year warranty.

## APPLICATION

The UB52 is engineered to provide secondary full range coverage from a stage lip or apron mounting location. Also very effective as an ultra-low profile under balcony fill system. It's 6.28 in height allows it to be mounted within stage steps and hidden from view.

Applications include:

- Houses of Worship
- Performing Arts Centers
- Theaters

## PERFORMANCE

Frequency Response (Hz)		
±3 db	98 Hz to 18 kHz	
-10 dB	50 Hz	
Axial Sensitivity (dB SPL, 1 Watt @ 1m)		
	91	
Impedance (Ohms)		
	8	
Power Handling (Watts, continuous)		
AES Standard	175	
Recommended High-Pass Frequency		
24dB/Octave	50 Hz	
Calculated Maximum Output (dB SPL, @ 1m)		
Peak	119.4	
Long Term	113.4	
Nominal Coverage Angle, -6 dB Points (degrees)		
Horizontal	90	
Vertical	60	



## PHYSICAL

Configuration	2-way, full range	
Powering	Passive LF/HF crossover	
LF Subsystem	2x 5.25 in, vented	
HF Subsystem	1 in exit compression driver on constant directivity horn	
Enclosure Materials	Exterior grade Baltic birch plywood	
Finish	Wear resistant textured black paint	
Connectors	2-terminal barrier strip	
Suspension Hardware	(2) 1/4"-20 threaded mounting/suspension points (1 each side)	
Grille	Powder coated perforated steel	
Dimensions	<b>inches</b>	<b>millimeters</b>
Height	6.2	160
Width	19.8	502
Depth	8.1	207
Weights	<b>pounds</b>	<b>kilograms</b>
Net Weight	19	8.6
Shipping Weight	21	9.5

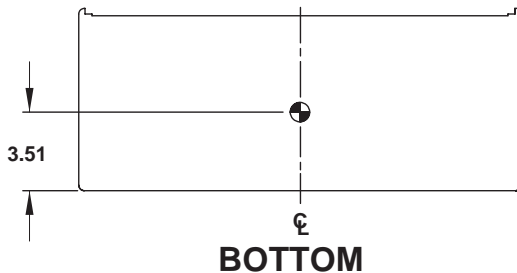
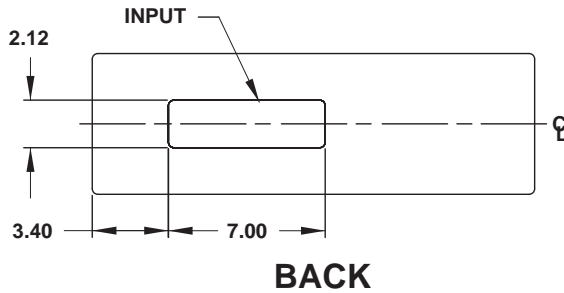
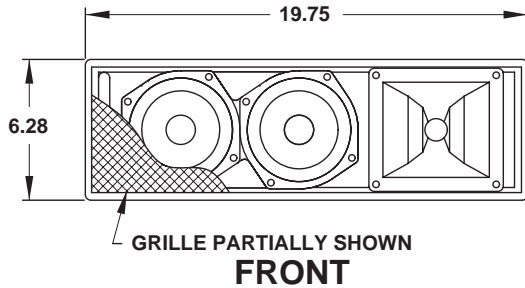




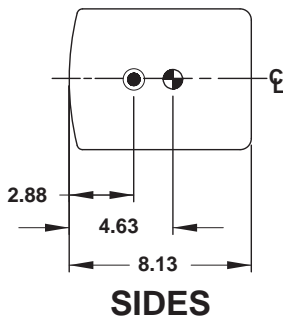
# SPECIFICATIONS UB52

## DIMENSIONAL DRAWING

1. SYMBOL INDICATES MOUNTING POINT, 1/4-20 THREADED HOLE.
2. SYMBOL INDICATES CENTER OF BALANCE.



DIMENSIONS APPLY TO TOP & BOTTOM



DIMENSIONS APPLY TO BOTH SIDES

## A & E SPECIFICATIONS

The 2-way full range loudspeaker system shall incorporate two 5.25 in LF transducers and a 1 in exit compression driver HF transducer.

The LF drivers shall be mounted in a vented enclosure tuned for optimum low frequency response. The HF driver shall be loaded on a constant directivity horn with a nominal coverage pattern of 90° (h) x 60° (v). An internal passive filter network shall provide fourth order acoustical crossover and system equalization.

System frequency response shall vary no more than +/-3 dB from 98 Hz to 18 kHz measured on axis. The loudspeaker shall produce a sound pressure level (SPL) of 91 dB SPL on axis at 1 meter with a power input of 1 watt, and shall be capable of producing a peak output of 119.4 dB SPL on axis at 1 meter. The loudspeaker shall handle 175 watts of amplifier power (continuous) and shall have a nominal impedance of 8 ohms.

The loudspeaker enclosure shall be rectangular in shape. It shall be constructed of exterior grade Baltic birch plywood and shall employ extensive internal bracing. It shall be finished in wear-resistant textured black paint. Input connectors shall be 2-terminal barrier strip. A total of two 1/4"-20 threaded mounting/suspension points (1 each side) shall be provided. The front of the loudspeaker shall be covered with a powder coated perforated steel grille.

The two-way full range loudspeaker shall be the EAW model UB52.

## INPUT PANEL DRAWING



0006410 (A)  
3/12/03

Manufacturing tolerances are +/- 0.13 and +/- 1°



## Free Manuals Download Website

<http://myh66.com>

<http://usermanuals.us>

<http://www.somanuals.com>

<http://www.4manuals.cc>

<http://www.manual-lib.com>

<http://www.404manual.com>

<http://www.luxmanual.com>

<http://aubethermostatmanual.com>

Golf course search by state

<http://golfingnear.com>

Email search by domain

<http://emailbydomain.com>

Auto manuals search

<http://auto.somanuals.com>

TV manuals search

<http://tv.somanuals.com>