

# PC332B Personal CD player with FM radio

## FCC Warnings

Warning: Changes or modifications to this unit not expressly approved by the party responsible for compliance could void the user's authority to operate the equipment.

NOTE: This equipment has been tested and found to comply with the limits for a Class B digital device, pursuant to Part 15 of the FCC Rules. These limits are designed to provide reasonable protection against harmful interference in a residential installation. This equipment generates, uses, and can radiate radio frequency energy and, if not installed and used in accordance with the instructions, may cause harmful interference to radio communications. However, there is no guarantee that interference will not occur in a particular installation. If this equipment does cause harmful interference to radio or television reception, which can be determined by turning the equipment off and on, the user is encouraged to try to correct the interference by one or more of the following measures:

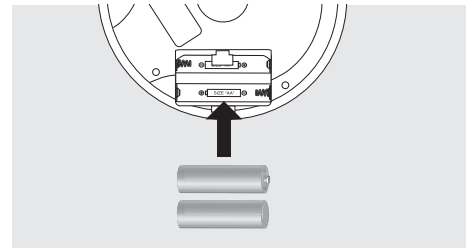
- Reorient or relocate the receiving antenna.
- Increase the separation between the equipment and receiver.
- Connect the equipment into an outlet on a circuit different from that to which the receiver is connected.
- Consult the dealer or an experienced radio/TV technician for help.

## Setup

### Battery Power

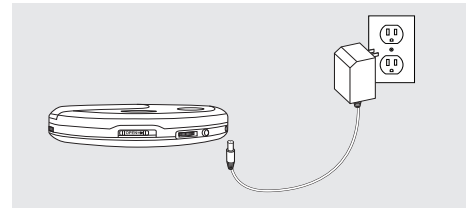
Requires 2, AA-size, batteries (not included)

*Do not mix old and new batteries.  
Do not mix alkaline, standard (carbon-zinc), or rechargeable (ni-cad, ni-mh, etc) batteries.  
No mezcle baterías viejas y nuevas.  
No mezcle baterías alcalinas, estándar (carbono-zinc) o recargables (ni-cad, ni-mh, etc.).*

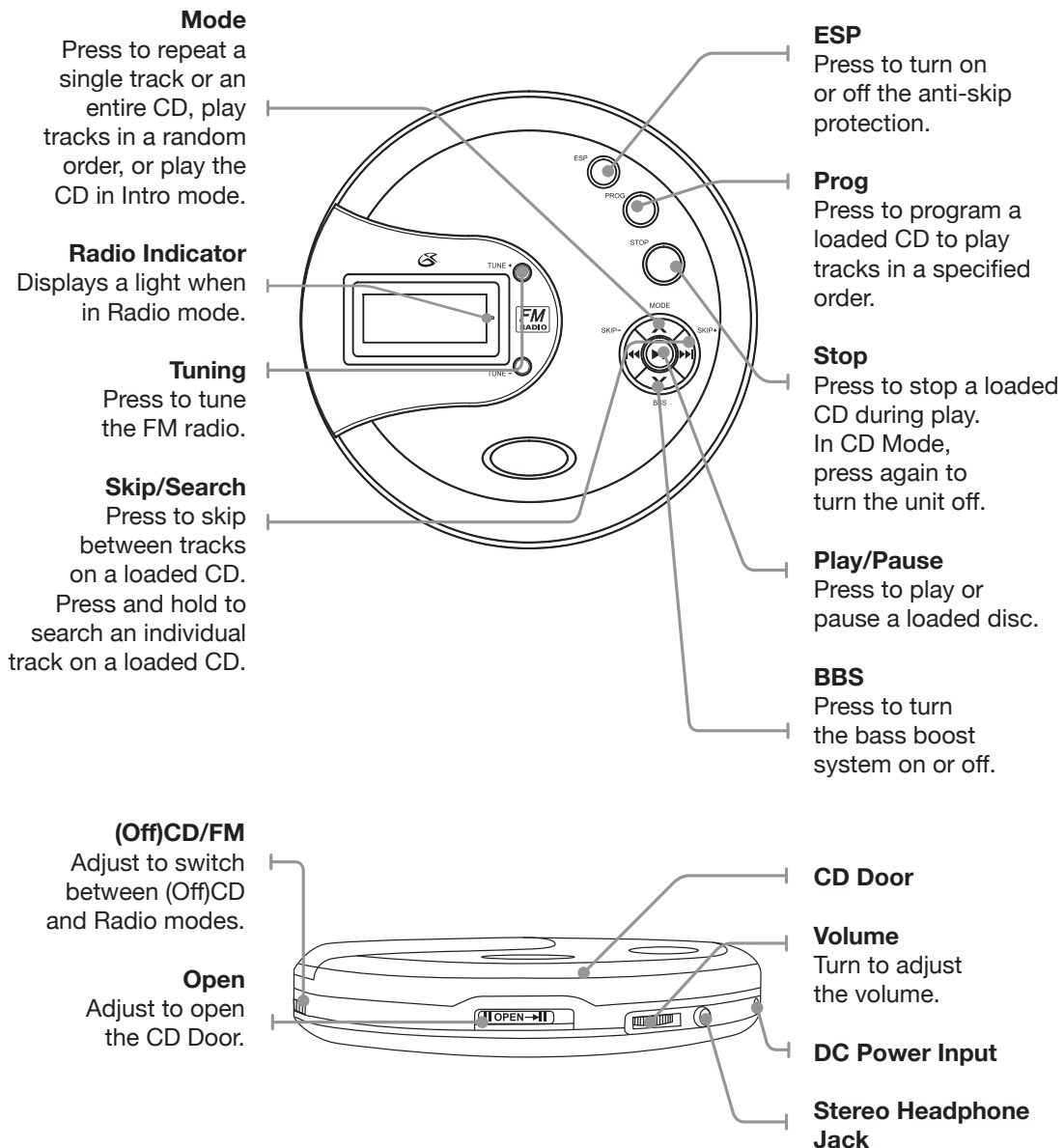


### AC Power

Requires an AC/DC power adapter (not included)



## Introduction



## CD

### Loading a CD

1. Slide the **Open** switch to open the **CD Door**.
2. Load a CD into the player, label side up.
3. Close the **CD Door**.

### Playing a CD

1. Follow the instructions for Loading a CD.
2. Adjust the **(Off)CD/FM** switch to the (Off)CD position.
3. Press the **Play/Pause** button.

### Programming a CD

1. Follow the instructions for Loading a CD and Playing a CD.
2. Press the **Stop** button to stop the CD during play.
3. Press the **Prog** button.
4. "00" will begin to blink on the display.
5. Press the **Skip/Search** buttons to select the track you wish to program.
6. Press the **Prog** button to save the selected track to the program.
7. Repeat steps 4 and 5 to program up to 20 tracks to play in the order they are programmed.
8. Press the **Play/Pause** button to begin playing the programmed tracks.

## Radio

### Tuning the FM Radio

1. Adjust the **(Off)CD/FM** switch to the FM position.  
*The **Radio Indicator** will display a light when in Radio mode.*
2. Press the **Tun +/-** buttons to search for the next available station.
3. Press and hold the **Tun +/-** buttons to manually adjust the station.

*Note: The display will be blank in FM Mode.*

*Note: To improve radio reception, fully extend the headphone cord.*



### International Support

To download this User's Guide in English, Spanish, or French, or to get answers to frequently asked questions, visit the support section at: [www.gpx.com](http://www.gpx.com)

Para descargar este Manual del Usuario en inglés, español y francés, o para obtener respuestas a preguntas frecuentes, visite la sección de apoyo en [www.gpx.com](http://www.gpx.com)

Pour télécharger ce guide de l'utilisateur en anglais, espagnol ou français, ou pour obtenir des réponses à des questions fréquemment posées, consultez la rubrique d'assistance sur [www.gpx.com](http://www.gpx.com)

## Free Manuals Download Website

<http://myh66.com>

<http://usermanuals.us>

<http://www.somanuals.com>

<http://www.4manuals.cc>

<http://www.manual-lib.com>

<http://www.404manual.com>

<http://www.luxmanual.com>

<http://aubethermostatmanual.com>

Golf course search by state

<http://golfingnear.com>

Email search by domain

<http://emailbydomain.com>

Auto manuals search

<http://auto.somanuals.com>

TV manuals search

<http://tv.somanuals.com>