



Thank you for purchasing this Parallel Power Kit. Do not return this product to the store! If any parts are missing or damaged, please contact us toll free at 1-888-GEN-TRAN or visit our website at www.gen-tran.com. This product is intended for use with two Honda EU3000i generators ONLY. Do NOT attempt to parallel two unlike generators! For 125 Volt Use Only.

TOOLS NEEDED FOR ASSEMBLY:

10 mm socket wrench or nut driver
11/32 nut driver

HARDWARE INCLUDED:

(2) 8/32 Nylok nuts
(2) M6-35 Standoffs

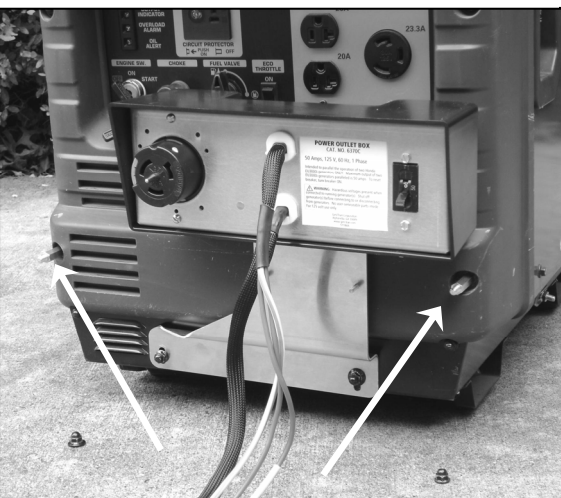
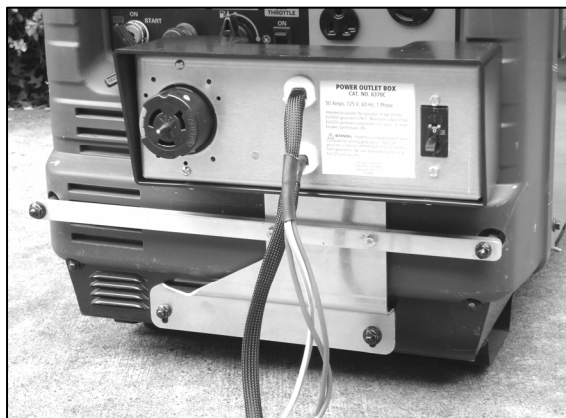


Configuration of receptacle
50 amps, 125 V
(L6377)

**1****2**

STEP 1
NEVER connect Parallel Power Kit while generator is running! Using the 10 mm socket wrench, remove the four (4) cap nuts on the end of the generator, and set aside.

STEP 2
Mount Parallel Power Kit mounting plate on two bottom studs, and reattach bottom two cap nuts loosely.

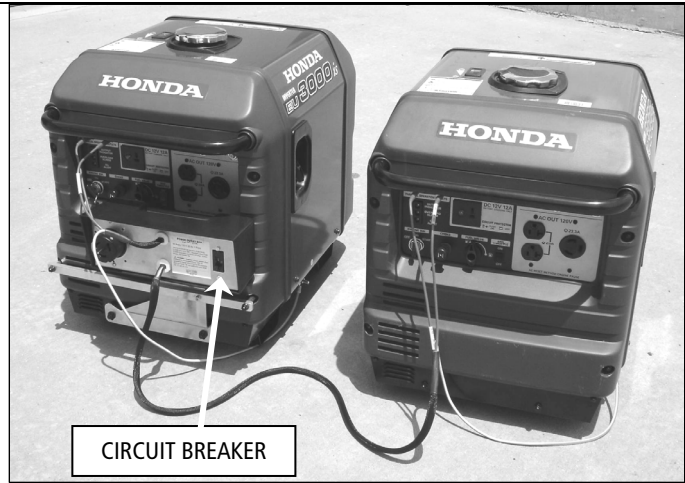
**3****4**

STEP 3
Insert two standoffs into the two upper holes, and hand tighten.

STEP 4
Attach support bar with recesses over the standoffs. Reattach the remaining two cap nuts over the studs, and hand tighten. Then attach two Nylok nuts onto the studs protruding from the mounting plate to secure the support bar. Tighten all nuts moderately using a tool.



5



6

STEP 6

Insert the set of longer Parallel Cables into "Parallel Operation" jacks on second generator. Attach green/yellow ground cable to grounding stud on the lower right side of the second generator as well.

During operation, if the Parallel Power Kit is not feeding power to your load when generators are running, it is possible that the circuit breaker has been tripped. You will need to reset circuit breaker on the front of the Parallel Power Kit to "ON".

Be sure to shut down generators before connecting to or disconnecting from Parallel Power Kit.

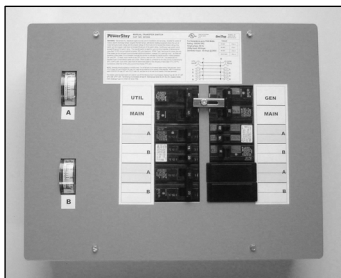
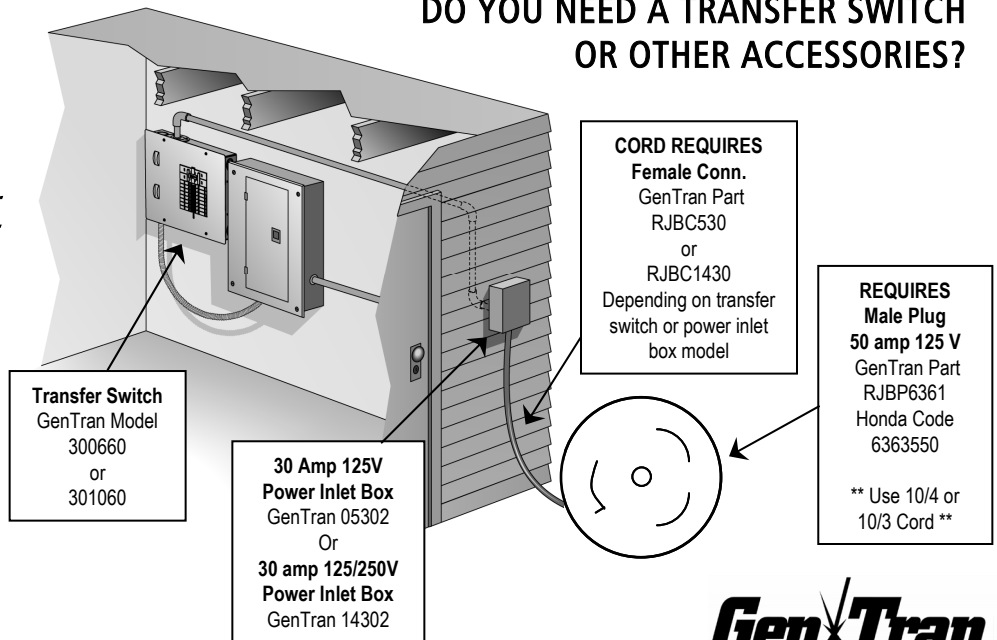
For 120 volt applications ONLY.

STEP 5

Insert short Parallel Cables into "Parallel Operation" jacks on the first generator. Do not be concerned with polarity when connecting to these outlets, as the polarity is handled by the internal computer chip within the EU3000i. Then attach the first green/yellow ground cable to grounding stud on the lower right side of the first generator using a screwdriver.

NOTE: To use your paralleled generators to provide backup power to a home or other dwelling, or an RV, you will need an adapter cord to run from the Parallel Power Kit (use 10/3 or 10/4 cord) with an appropriate female connector to plug into your power inlet box, transfer switch or RV. A transfer switch is required by the National Electrical Code Article 702.6 for all backup generator installations.

DO YOU NEED A TRANSFER SWITCH OR OTHER ACCESSORIES?



WARNING: Hazardous voltages present when generators running. Will cause death, serious injury or substantial property damage. Shut off generators before connecting to or disconnecting from Parallel kit. **IMPORTANT:** The accessories noted here are intended for 120 volt use only. Transfer switches and power inlet boxes should be installed by a qualified professional familiar with residential wiring and electrical codes. GenTran accepts no responsibility for accidents caused by incorrect or in appropriate installation or use of this product. Download from www.Somanuals.com. All Manuals Search And Download.



Free Manuals Download Website

<http://myh66.com>

<http://usermanuals.us>

<http://www.somanuals.com>

<http://www.4manuals.cc>

<http://www.manual-lib.com>

<http://www.404manual.com>

<http://www.luxmanual.com>

<http://aubethermostatmanual.com>

Golf course search by state

<http://golfingnear.com>

Email search by domain

<http://emailbydomain.com>

Auto manuals search

<http://auto.somanuals.com>

TV manuals search

<http://tv.somanuals.com>