



FASTENERS* SHOWN FULL SIZE

RAIL TO POWER HEAD

- Item #6 Carriage Stop
Item #39 Coupler
Item #4 1/4"-20 x 1" Hex Shoulder Bolt
Item #5 1/4"-20 Hex Serrated Flange Nut

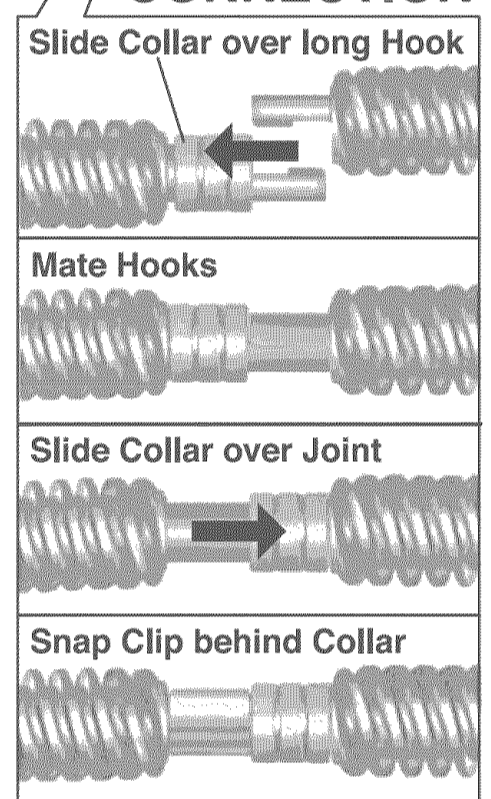
POWER HEAD TO CEILING

- Item #46 5/16"-18 X 3/4" Hex Bolt
Item #9 5/16"-18 Hex Flange Nut
Item #22 1/4" x 2" Lag Screw

RAIL SECTION CONNECTION

- Item #8 5/16"-18 x 1 1/16" Hex Shoulder Bolt
Item #9 5/16"-18 Hex Flange Nut
Item #11 Screw Joint Collar
Item #12 Screw Joint Clip

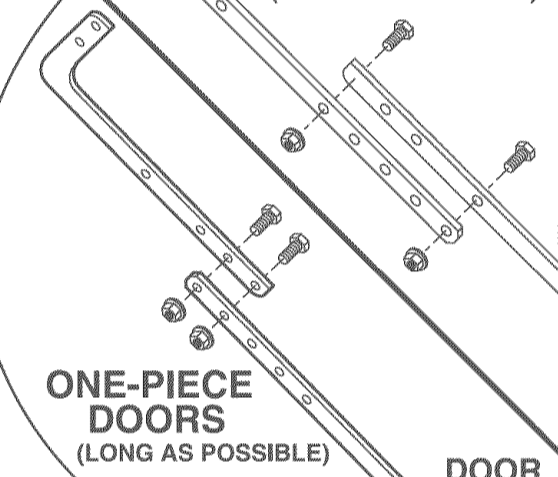
DRIVE SCREW CONNECTION



DOOR ARMS TO CARRIAGE

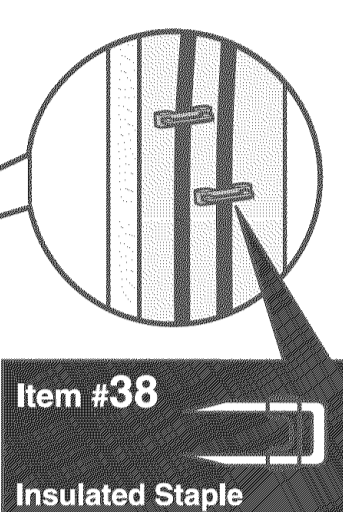
- Item #24 Clevis Pin, 3/8" x 15/16"
Item #25 Cotter Pin, .073" DIA.

SECTIONAL DOORS (SHORT AS POSSIBLE)



DOOR ARMS

- Item #28 3/8"-16 Hex Flange Nut
Item #27 3/8"-16 X 7/8" Hex Bolt



DOORS MADE OF MASONITE, LIGHTWEIGHT WOOD, FIBERGLASS, AND METAL MUST BE PROPERLY BRACED BEFORE MOUNTING DOOR OPERATOR...

NOT INCLUDED: 1/4"-20 x 2" Carriage Bolt / 1/4"-20 Hex Flange Nut WOODEN DOORS

BASED ON THE HEIGHT OF YOUR HEADER, A MOUNTING BOARD MAY BE REQUIRED FOR ATTACHING HEADER BRACKET

DOOR BRACKET TO DOOR ARMS

- Item #24 Clevis Pin, 3/8" x 15/16"
Item #25 Cotter Pin, .073" DIA.
Item #47 1/4"-20 x 3/4" Self Drilling Screw LIGHTWEIGHT DOORS
Item #22 1/4" x 2" Lag Bolt WOODEN DOORS

Safe-T-Beam BRACKETS

- Item #40 #10 x 1-1/4" Phillips Hex Screw

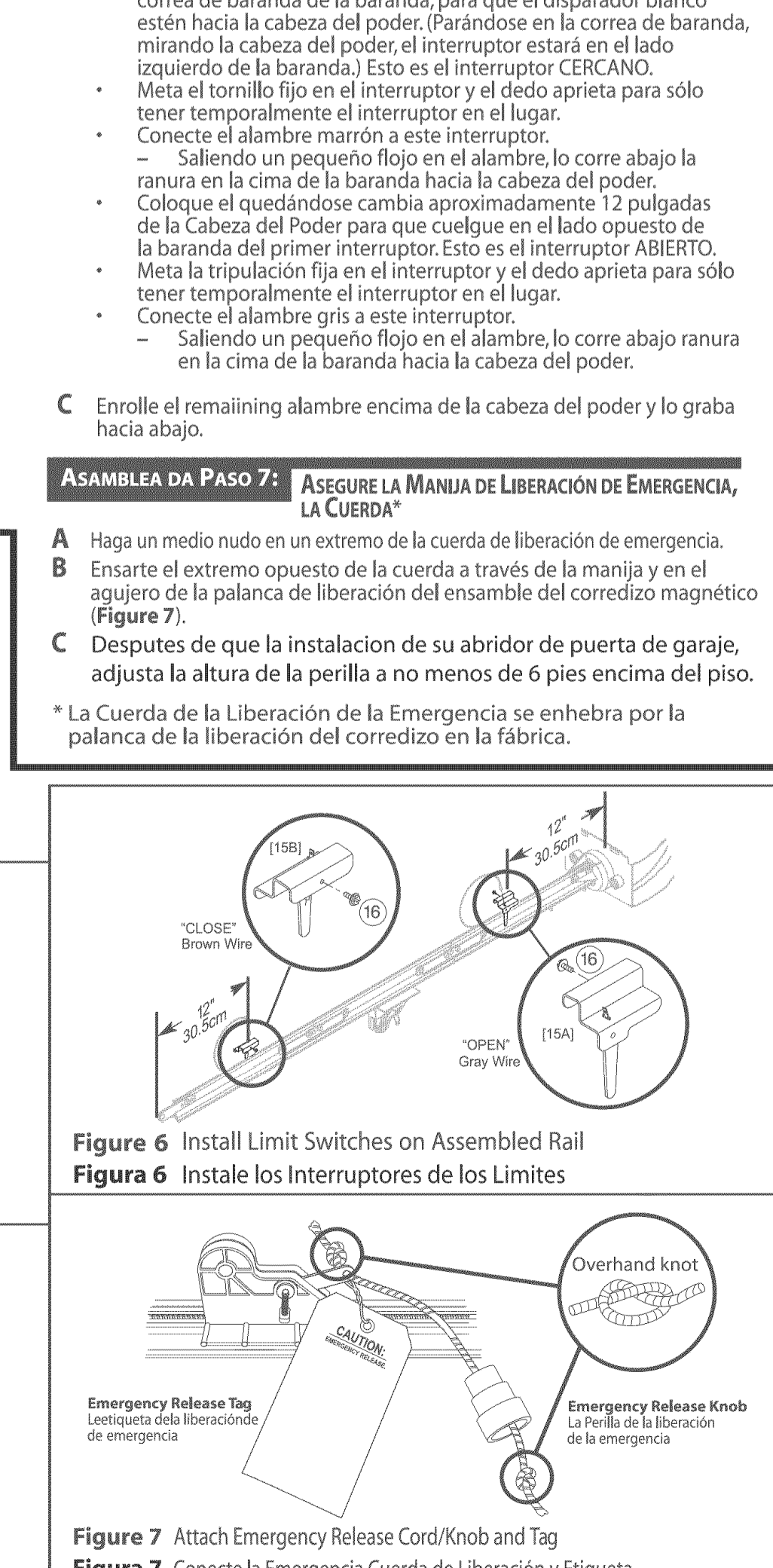
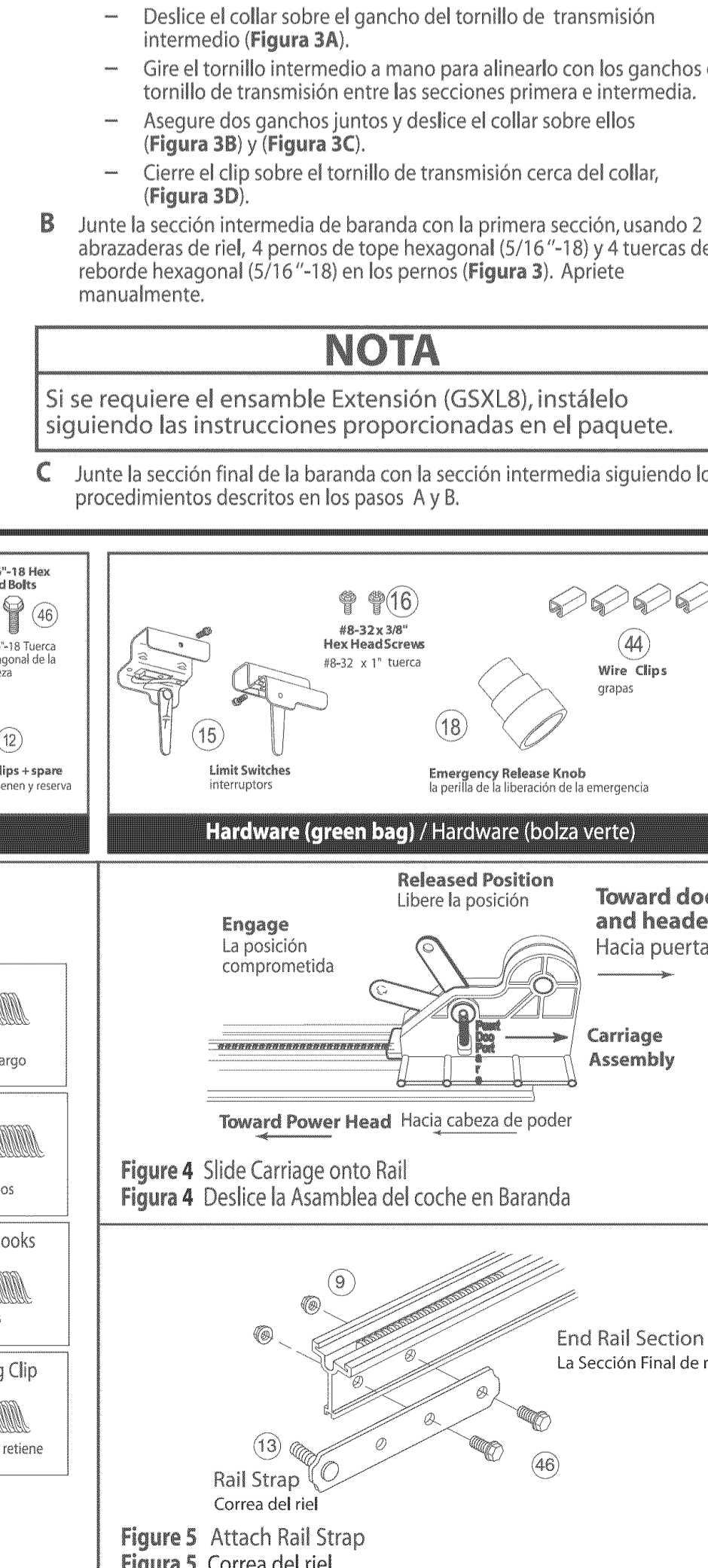
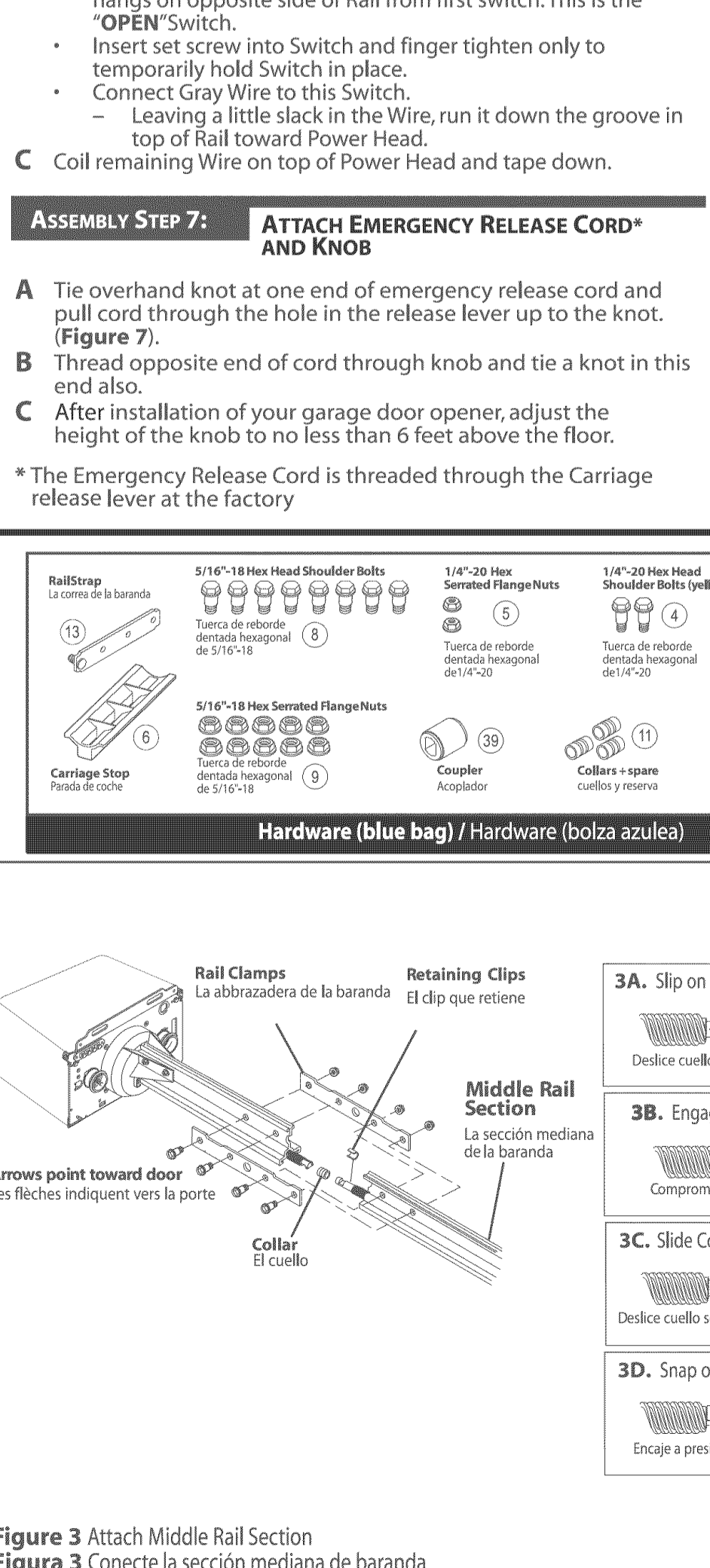
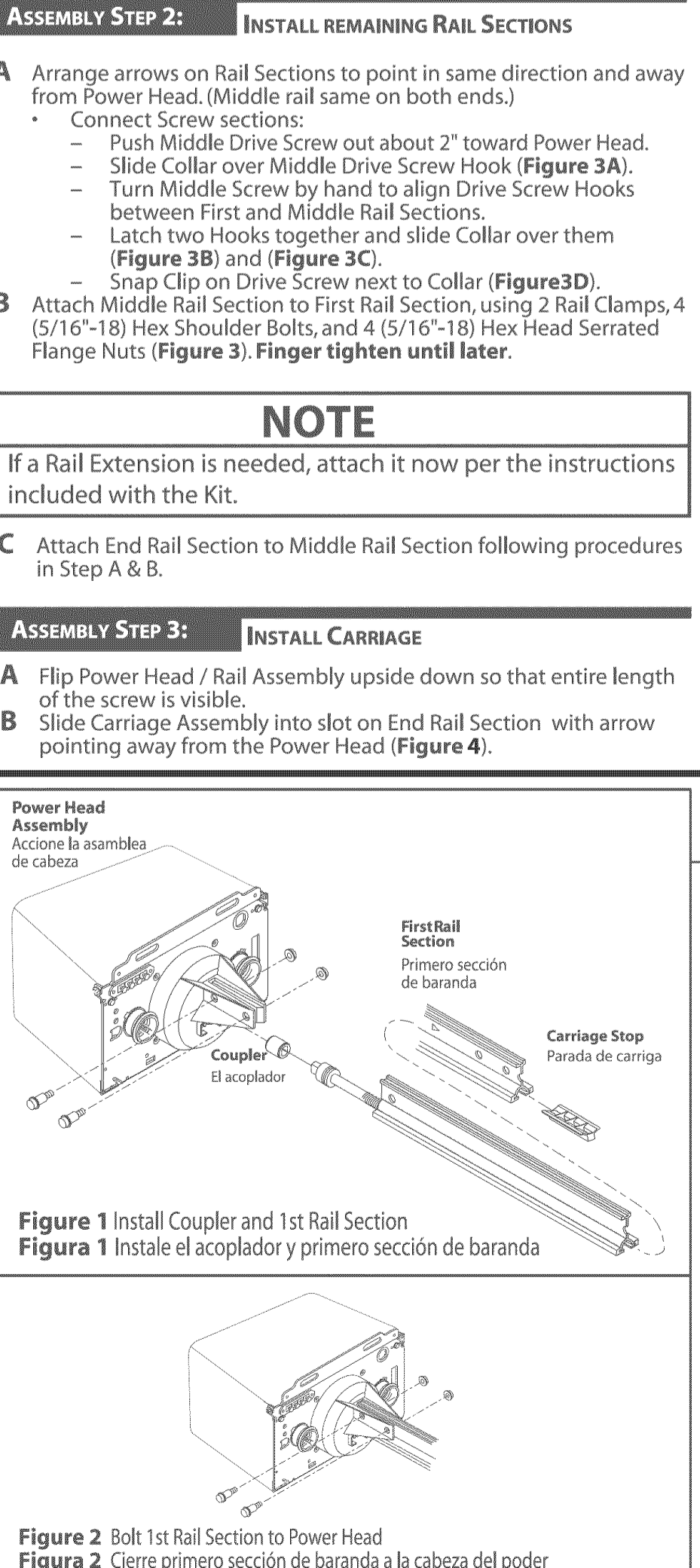
GARAGE DOOR OPENER ASSEMBLY

ASSEMBLY STEP 1: CONNECT RAIL TO POWER HEAD. OPEN BLUE PARTS BAG. Turn Power Head so that front panel... Install Coupler over Motor Shaft... CAUTION: The Drive Screw can slide out of Rail Sections. Keep Rail Sections level... ASSEMBLY STEP 2: INSTALL REMAINING RAIL SECTIONS. Arrange arrows on Rail Sections to point in same direction... ASSEMBLY STEP 3: INSTALL CARRIAGE. Flip Power Head / Rail Assembly upside down... ASSEMBLY STEP 4: ATTACH RAIL STRAP TO END RAIL SECTION. Attach Rail Strap to End Rail Section...

ASSEMBLY STEP 5: ALIGN RAIL SECTIONS AND TIGHTEN ALL BOLTS. Align all Rail Sections so Carriage Assembly can slide... ASSEMBLY STEP 6: INSTALL AND CONNECT LIMIT SWITCHES. Turn Opener right side up. Place Switches on Rail... ASSEMBLY STEP 7: ATTACH EMERGENCY RELEASE CORD* AND KNOB. Tie overhand knot at one end of emergency release cord... ASSEMBLY STEP 8: ATTACH MIDDLE RAIL SECTION. Attach Middle Rail Section to First Rail Section...

ASAMBLEA DA PASO 1: CONECTE EL BARANDA LA CAJA DEL MOTOR. ABRA LA BOLZA AZUL DE PARTES. Voltee la caja del motor hacia abajo... PRECAUTION: El tornillo de transmisión y el forro del riel pueden deslizarse fuera de las secciones del riel... ASAMBLEA DA PASO 2: INSTALACIÓN DE LAS SECCIONES ADICIONALES DE LA BARANDA. Acomode las flechas de las secciones de baranda...

ASAMBLEA DA PASO 3: INSTALE EL ENSAMBLE DEL CORREZIDO MAGNÉTICO LAS BARANDAS. Coloque la leva del ensamble del correzido en la posición "liberar". ASAMBLEA DA PASO 4: SUJETE LA BANDA DE BARANDA A LA SECCIÓN FINAL DE BARANDA. Sujete la banda del riel a la sección final del riel... ASAMBLEA DA PASO 5: ALINEE LAS SECCIONES DE LA BARANDA Y APIRIE TODOS LOS PERNOS. Alinee todas las secciones del riel... ASAMBLEA DA PASO 6: INSTALE Y CONECTE LOS INTERRUPTORES DE LOS LIMITES DE CIERRE Y APERTURA. Gire el Operario boca arriba. Coloque switches en la baranda... ASAMBLEA DA PASO 7: ASEGURE LA MANIJA DE LIBERACIÓN DE EMERGENCIA, LA CUERDA*. Haga un medio nudo en un extremo de la cuerda de liberación de emergencia...



Free Manuals Download Website

<http://myh66.com>

<http://usermanuals.us>

<http://www.somanuals.com>

<http://www.4manuals.cc>

<http://www.manual-lib.com>

<http://www.404manual.com>

<http://www.luxmanual.com>

<http://aubethermostatmanual.com>

Golf course search by state

<http://golfingnear.com>

Email search by domain

<http://emailbydomain.com>

Auto manuals search

<http://auto.somanuals.com>

TV manuals search

<http://tv.somanuals.com>