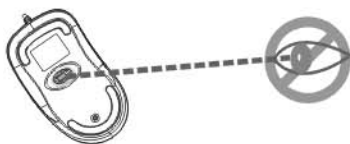




CAUTION: To use this mouse properly, please read the user's guide before installation.
注意: 使用本產品前請詳閱本操作說明書

Upgrade Your Life™
www.gigabyte.com.tw



! Please DO NOT direct the laser beam at anyone's eye!!

Welcome

Your mouse uses a new generation technology laser module that replaces the traditional LED mouse and provides amazing tracking ability. The laser module accurately scans the surface in 30 times sensitive of LED optical mouse. You can work with your mouse in most surfaces perfectly.

Safety Notice

1. This product complies with IEC 60825-1, class 1 laser product.
2. Your product complies with FCC and CE rules.
3. This product has no serviceable parts. Use of controls or adjustments of procedures other than the user guide may result in dangerous.

CAUTION
Change or modifications not expressly approved by the manufacturer responsible for compliance could void the user's authority to operate the equipment.

SETUP the Mouse

The Mouse is connected to your computer via a cable. It needs to plug in your computer by a USB port or a mouse port.

For PS/2 mouse port installation

Please turn off your computer before installing your mouse. Plugging and unplugging cables to your computer's mouse port while the computer is running can damage the mouse port or your computer.

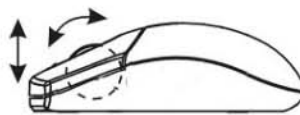
For USB port installation

Windows 98 (or higher) is required for USB port installation. Connect the receiver cable to the USB port on the computer. For Windows, you may be prompted to insert the Windows's software CD. Insert the divers' CD into the computer's CD-ROM drive when asked to do so. Follow the instructions steps.

Using your Mouse

How to use the wheel

Your mouse has a wheel that functions both as a wheel for Windows Scrolling and also as a customized button. It can be used as a standard mouse button, click (press down) the wheel. To Use the Middle Button, Directly Press down the Wheel. For scrolling the screen, simply move the wheel.

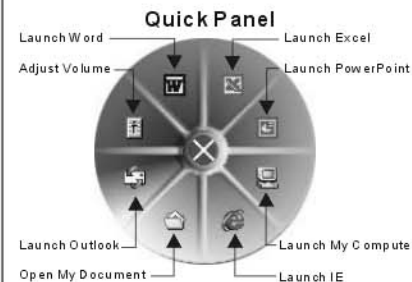


Caution: It may interfere the optical sensor of the mouse, if your tabletop surface is in red color, transparent as glass or highly reflective like a mirror. Try to use a mouse pad or use your mouse on a different tabletop surface.

Utility & Office hot key

The Office hot key provides you with easy way to customize your mouse operations and total control over the screen without using taskbar or start menu.

You just need to press the Office Selector Key on your mouse then round shaped quick panel will pop up. You will see eight items on the Quick Panel providing effective accessibility for most frequently used Windows applications including Word, Excel and PowerPoint. You just need to click on the item you want to launch.



(Tips: There are popup tips when you point on the screen icons.)

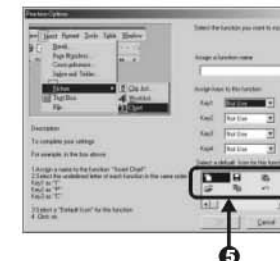
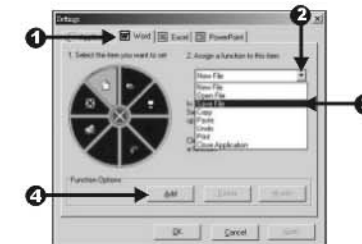
Utility Settings

Double click the mouse icon on the right bottom corner of the Windows screen to get into the setting window.

You can add new functions to your Quick Panel for making your own frequently Command Quick Panel in the Office applications.



Example: Add a "save" functional key in the Quick Panel for the Word application.



Troubleshooting

Mouse does not work upon installation

Try one or more of the following:

- Make sure you have installed the Driver correctly.
- Make sure the cable is plugged into the right mouse port.
- Unplug the Mouse and then plug in the mouse again. Make sure that Mouse had been detected by the Operating Systems properly.
- Make sure your mouse port has the proper configuration. Refer to your computer documentation for the correct port configuration.

硬體安裝

將本雷射滑鼠連接到電腦的PS/2或USB連接埠。

PS/2 滑鼠安裝說明

請於安裝前先關閉您的電腦後再插入滑鼠開始安裝，請注意如果您在開機過程中插拔滑鼠將容易造成您電腦連接埠的損害

USB 滑鼠安裝說明

以Windows 98(或進階版)在安裝滑鼠的時候，將有可能要求您安裝USB的驅動程式。首先，請將滑鼠插入USB連接埠，Windows操作平台會要求您提供Windows98的系統光碟，請依照系統提示步驟進行USB驅動程式安裝。(Windows2000、XP以上操作系統支持隨插即用，故在插入滑鼠後即可使用。)

應用提示

此應用會提供您在螢幕上最簡易的操作模式，在按下Office快速選擇鍵後，有8個功能選項能讓您快速連結在Windows環境下最常使用的應用軟體，包含：Word、Excel and PowerPoint 以及其他不同的連結，也可以按下中間的紅色功能鍵迅速退出。

注意事項

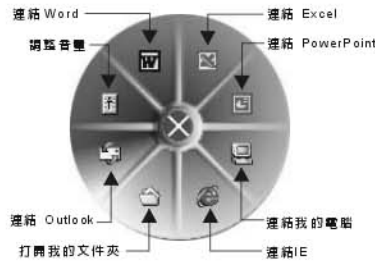
1. 本產品符合 Class 1 IEC 60825-1，之國際標準安全規範。
2. 本產品符合 CE 及 FCC 國際安全規範。
3. 本產品沒有需要維護的零件，請勿自行拆卸本產品的各項零件。

Office 應用模式

本產品的特色在於，當您按下office快速選擇鍵後，立即進入不同的工作環境，如：Word、Excel and PowerPoint，快速連結鍵可以讓您在不同的環境下選擇較常使用的功能鍵，如：在Word的環境下要開新檔案，只需要按下面板顯示的圖像，您也可以更改或新增圖面上不同的功能鍵，使您在Word、Excel and PowerPoint等不同的環境下分別使用，並請瀏覽以下資訊。

設定

重覆按下螢幕右下角的滑鼠圖像，然後以下的視窗會開啟。



在應用視窗裡面，您可以看到快速連結鍵裡的8個選項(選項數量無法做修改)。滑鼠指標在以上任一圖像上即可看到其功能描述。

Word, Excel, PowerPoint 的設定

您可以改變每一個功能的位置，首先，選取您要設定的快速連結鍵並經由滾輪選取您要設定的項目並儲存。

功能新增或修改

您可以在快速連結鍵裡增加新的功能，在底部按下“新增”鍵，然後螢幕就會開啟。



如果您想增加“圖表”的功能，您可在快速連結選項選取插入功能並做以下設定。首先，您必須依序按下插入圖片及圖表的選項，在每個鍵上輸入便於代表的英文字碼，並依序輸入：

- 第一層: I 為插入(Insert)
- 第二層: P 為圖片(Picture)
- 第三層: H 為圖表(Chart)

然後在選取每個圖像所代表的功能並確認。功能修改部分請先按下Modify修改並依上述的步驟可完全依個人需求做不同的設定更改。(Word對於建立圖表的快捷指令步驟: 按住Alt然後再依序按 I、P、H，此時Word會建立一個新的圖表)

例如: 在 Word 裡加入儲存鍵 為快捷鍵



簡易問與答:

滑鼠安裝後無法使用，請嘗試下列的方法:

1. 請確認驅動程式已經正確安裝。
2. 請確認滑鼠的USB接頭插正在正確並可使用的USB連接埠上。
3. 請拔掉並再重新接上滑鼠，並確認您的作業系統有偵測到滑鼠的硬體。

重要事項

- 1: 請參照使用說明手冊使用本產品，請勿拆解本產品或更換任何零件。
- 2: 請勿將本產品置於潮濕表面或水中，如果受潮或浸水請將本產品拔離您的電腦設備並送交當地經銷點。
- 3: 為避免漏電，請擦乾您的手使用本產品。
- 4: 請勿將本產品置於靠近火源處或高溫處。

Important :

- Product is not warranted if the product is modified, altered or repaired without authorization by Gigabyte.
- Specifications are subject to change without notice.
- All brand names and products are registered trademarks of their respective companies.

製造商: 技嘉科技股份有限公司 产地: 中国 Made in China http://www.gigabyte.com.tw

Free Manuals Download Website

<http://myh66.com>

<http://usermanuals.us>

<http://www.somanuals.com>

<http://www.4manuals.cc>

<http://www.manual-lib.com>

<http://www.404manual.com>

<http://www.luxmanual.com>

<http://aubethermostatmanual.com>

Golf course search by state

<http://golfingnear.com>

Email search by domain

<http://emailbydomain.com>

Auto manuals search

<http://auto.somanuals.com>

TV manuals search

<http://tv.somanuals.com>