



2400W

SILENT SHREDDER

SHS2400

INSTRUCTION MANUAL

GMC®

GLOBAL MACHINERY COMPANY

Download from www.Somanuals.com. All Manuals Search And Download.

Contents

Warranty	2
Introduction	3
Environmental protection	3
Description of symbols	3
Specifications	3
General safety rules	4
Additional safety rules for shredders	5
Accessories	6
Unpacking	6
Know your product	7
Preparation of the shredder prior to use	8
Assembly	8
Operation of the shredder	9
Starting the motor	9
Stopping the motor	9
Changing direction of rotation	9
Overload protection	9
Disconnect switch	10
Mulching	10
Mulching palm fronds	10
Composting	10
Adjusting the cutting gear	11
Maintenance and storage information	11
Cleaning	11
Power cord maintenance	11

Warranty Power Tools

Whilst every effort is made to ensure your complete satisfaction with this tool, occasionally, due to the mass manufacturing techniques, a tool may not live up to our required level of performance and you may need the assistance of our service department.

This product is warranted for a 2-year period for home domestic use from the date of the original purchase. If found to be defective in materials or workmanship, the tool or the offending faulty component will be repaired or replaced free of charge with another of the same item. A small freight charge may apply. Proof of purchase is essential. We reserve the right to reject any claim where the purchase cannot be verified.

This warranty does not include damage or defects to the tool caused by or resulting from abuse, accidents, alterations or commercial or business use. It also does not cover any bonus items or included accessories. Only the power tool is covered under this warranty.

With continuing product development, changes may have occurred which render the product received slightly different to that shown in this instruction manual.

Please ensure that you store your receipt in a safe place.

Conditions apply to the above warranty. For full details of the warranty terms and conditions please refer to our website – www.gmcompany.com

For prompt service we suggest you log your service request online - www.gmcservice.com.au, should you not have access to the internet, please contact our service department on 1300 880 001 (Australia) or 0800 445 721 (New Zealand).

Introduction

Your new GMC power tool will more than satisfy your expectations. It has been manufactured under stringent GMC Quality Standards to meet superior performance criteria.

You will find your new tool easy and safe to operate, and, with proper care, it will give you many years of dependable service.

CAUTION. Carefully read through this entire Instruction Manual before using your new GMC Power Tool. Take special care to heed the Cautions and Warnings.

Your GMC power tool has many features that will make your job faster and easier. Safety, performance, and dependability have been given top priority in the development of this tool, making it easy to maintain and operate.

Environmental protection



Recycle unwanted materials instead of disposing of them as waste. All tools, hoses and packaging should be sorted, taken to the local recycling centre and disposed of in an environmentally safe way.

Description of symbols

The rating plate on your tool may show symbols. These represent important information about the product or instructions on its use.



Wear hearing protection.

Wear eye protection.

Wear breathing protection.



N380

Conforms to relevant standards for electromagnetic compatibility.



Read these instructions for use carefully.



Wear protective gloves.



WARNING. Keep spectators away. Beware of objects being flung out.



WARNING. Do not put hands or feet under the cover of the machine when it is running.



WARNING. Rotating blades.



The blades will continue to rotate after the machine has been switched off.



WARNING. Remove the plug from the wall socket before carrying out any kind of maintenance.



Do not leave this electrical tool in the rain.



WARNING. Rotating blades keep hands away from discharge.



Specifications

Voltage:	230–240 Vac ~ 50Hz
Input power:	2400W
Speed:	46 min ⁻¹
Maximum shredding diameter:	40mm
Blade cylinder size:	88mm
Blade length:	70mm
Insulation:	Earthed appliance
Weight:	24.5Kg
Protection:	IPX4

General safety rules

WARNING. Read all instructions. Failure to follow all instructions listed below may result in electric shock, fire and/or serious injury. The term “power tool” in all of the warnings listed below refers to your mains operated (corded) power tool or battery operated (cordless) power tool.

Save these instructions

1. Work area

- a. **Keep work area clean and well lit.** Cluttered and dark areas invite accidents.
- b. **Do not operate power tools in explosive atmospheres,** such as in the presence of flammable liquids, gases or dust. Power tools create sparks which may ignite the dust or fumes.
- c. **Keep children and bystanders away while operating a power tool.** Distractions can cause you to lose control.

2. Electrical safety

- a. **Power tool plugs must match the outlet. Never modify the plug in any way.** Do not use any adapter plugs with earthed (grounded) power tools. Unmodified plugs and matching outlets will reduce risk of electric shock.
- b. **Avoid body contact with earthed or grounded surfaces such as pipes, radiators, ranges and refrigerators.** There is an increased risk of electric shock if your body is earthed or grounded.
- c. **Do not expose power tools to rain or wet conditions.** Water entering a power tool will increase the risk of electric shock.
- d. **Do not abuse the cord. Never use the cord for carrying, pulling or unplugging the power tool.** Keep cord away from heat, oil, sharp edges or moving parts. Damaged or entangled cords increase the risk of electric shock.
- e. **When operating a power tool outdoors, use an extension cord suitable for outdoor use.** Use of a cord suitable for outdoor use reduces the risk of electric shock.

3. Personal safety

- a. **Stay alert, watch what you are doing and use common sense when operating a power tool.** Do not use a power tool while you are tired or under the influence of drugs, alcohol or medication. A moment of inattention while operating power tools may result in serious personal injury.
 - b. **Use safety equipment. Always wear eye protection.** Safety equipment such as dust mask, non-skid safety shoes, hard hat, or hearing protection used for appropriate conditions will reduce personal injuries.
 - c. **Avoid accidental starting.** Ensure the switch is in the off position before plugging in. Carrying power tools with your finger on the switch or plugging in power tools that have the switch on invites accidents.
 - d. **Remove any adjusting key or wrench before turning the power tool on.** A wrench or a key left attached to a rotating part of the power tool may result in personal injury.
 - e. **Do not overreach.** Keep proper footing and balance at all times. This enables better control of the power tool in unexpected situations.
 - f. **Dress properly. Do not wear loose clothing or jewellery.** Keep your hair, clothing and gloves away from moving parts. Loose clothes, jewellery or long hair can be caught in moving parts.
 - g. **If devices are provided for the connection of dust extraction and collection facilities, ensure these are connected and properly used.** Use of these devices can reduce dust related hazards.
- #### 4. Power tool use and care
- a. **Do not force the power tool.** Use the correct power tool for your application. The correct power tool will do the job better and safer at the rate for which it was designed.
 - b. **Do not use the power tool if the switch does not turn it on and off.** Any power tool that cannot be controlled with the switch is dangerous and must be repaired.

- c. **Disconnect the plug from the power source before making any adjustments, changing accessories, or storing power tools.** Such preventive safety measures reduce the risk of starting the power tool accidentally.
- d. **Store idle power tools out of the reach of children and do not allow persons unfamiliar with the power tool or these instructions to operate the power tool.** Power tools are dangerous in the hands of untrained users.
- e. **Maintain power tools. Check for misalignment or binding of moving parts, breakage of parts and any other condition that may affect the power tools operation.** If damaged, have the power tool repaired before use. Many accidents are caused by poorly maintained power tools.
- f. **Keep cutting tools sharp and clean.** Properly maintained cutting tools with sharp cutting edges are less likely to bind and are easier to control.
- g. **Use the power tool, accessories and tool bits etc., in accordance with these instructions and in the manner intended for the particular type of power tool, taking into account the working conditions and the work to be performed.** Use of the power tool for operations different from those intended could result in a hazardous situation.

5. Service

- a. **Have your power tool serviced by a qualified repair person using only identical replacement parts.** This will ensure that the safety of the power tool is maintained.

Additional safety rules for shredders

- This appliance is not intended for use by young children or infirm persons unless they have been adequately supervised by a responsible person to ensure that they can use the appliance safely.
- Young children should be supervised to ensure that they do not play with the appliance.
- Wear protective gloves, protective glasses and hearing protectors. Avoid loose clothing.
- Always stand steadily and in balance. Do not stretch towards the machine.

- During use, the machine should be level and on a firm surface.
- Ensure that all screws and nuts are properly tightened before use.
- Only use the machine in dry conditions and never outdoors when it is raining.
- Never use the machine with damaged safety devices or without protection.
- Keep hands, other parts of your body and clothing away from the feeding hopper and the discharge chute.
- Keep your face and the rest of your body away from the feeding hopper.
- Do not leave the machine unsupervised, switch off the motor and disconnect the plug.
- Hard objects such as stones, bottle, cans or pieces of metal must not be fed into the inlet chute. This can cause damage to the machine.
- If the machine becomes blocked, stop the motor and disconnect the plug. Pull out any objects and check for damage.
- If the fuse blows or if the overload protection is triggered, this is a sign that the machine is overloaded and/or that too many appliances are connected to the same extension cable. Check the cause and remedy. Do not install a more powerful fuse.
- Do not tug on the extension cable. Do not hold the cable taut. This can cause damage in the plugs or in the cables insulation. Such damage is invisible but can be dangerous.
- Always keep the extension cable away from the machine. Disconnect the plug from the electric socket and check the cable regularly for signs of damage or ageing. Do not use the machine with a damaged extension cable.
- If the cable is damaged, it must be replaced by an authorised service centre in order to avoid a hazard.
- Never move the machine by pulling the cable. The machine must not be moved with the motor running.

Accessories

The GMC Shredder is supplied with the following accessories as standard:

- Allen key

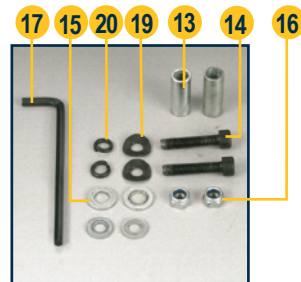
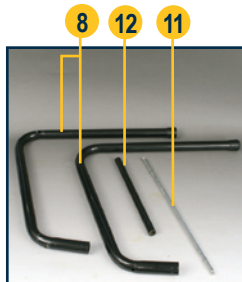
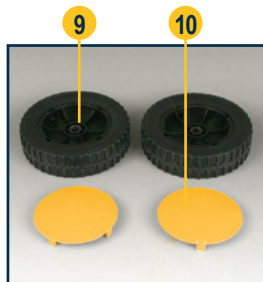
Unpacking

Due to modern mass production techniques, it is unlikely that your power tool is faulty or that a part is missing.

If you find anything wrong, do not operate the tool until the parts have been replaced or the fault has been rectified. Failure to do so could result in serious personal injury.

Know your product

1. Shredder body
2. On/off switch
3. Forward/Reverse Switch
4. Overload protection button
5. Handle
6. Inlet chute
7. Discharge chute
8. Leg (x 2)
9. Wheel (x 2)
10. Wheel cover (x 2)
11. Axle
12. Axle tube
13. Wheel bush (x 2)
14. Hex bolt (x 2)
15. Washer (x 4)
16. Nut (x 2)
17. Allen key
18. Blade adjusting screw
19. Wave washer (x 2)
20. Spring washer (x 2)

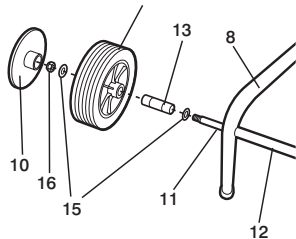


Assembly

Attaching the legs and wheels

WARNING. You may need assistance when lifting the machine out of the box and assembling.

Note. The legs should be splayed out at the bottom to give stability to the unit.



1. Position the axle tube (12) between the two wheel supports (8).
2. Slide the axle (11) through the hole in one of the wheel supports (8) then through the axle tube (12) and out through the hole in the other wheel support.



3. Position the washers (15), and wheel bushes (13) on each end of the axle. Push the wheels (9) onto each end of the axle (11).

Note. The wheels must be fitted the correct way round to allow the nuts to tighten on each end of the axle.



4. Position the remaining washers and the locking nuts (16) on each end of the axle and tighten both the wheel nuts using a suitable spanner.

5. Push the wheel covers (10) firmly onto the wheels.

WARNING. Take care when tilting the unit onto its wheels as the unit has an uneven weight distribution when tilted and during wheeled transportation.



Fitting the legs to the shredder

1. Turn the shredder over onto its side to reveal the wheel support fixing holes on the underside of the shredder body (1).
2. Push the legs (8) into position.
3. Align the holes in the legs with the fixing holes in the shredder body (1).
4. Secure the legs using the hex bolts (14) and wave washers (21) using the small allen key (17) supplied.

WARNING. To ensure the stability of the shredder, make sure that the cap headed bolts and wave washers are securely tightened.



Operation of the shredder

Starting the motor

WARNING. Ensure that the shredder is empty before starting the motor.

1. Connect the shredder power cord to an appropriate extension cord and plug it in to the mains power.
2. To start the motor, first make sure the yellow switch is in the forward position and then press the green section of the on/off switch (2) marked with an **I**.



Stopping the motor

Stop the motor by pressing the red section of the on/off switch (2) marked **O**.

WARNING. Do not feed in any material after the motor has been stopped. This will get caught in the machine and can make restarting impossible.



Changing direction of rotation

WARNING. The rotation direction switch can only be used if the shredder is switched off.

Position **I**

For forward action turn the forward/reverse switch to the right. The cutting blades pull the material in and shred it.

Position **O**

The cutting blades run in the opposite direction and release the clogged material.

Press the green on switch (2) after you have moved the forward/reverse switch to the left **O**.

The cutting blades run now in the opposite direction. If you release the on/off switch the shredder will stop automatically.

Overload protection

The shredder is equipped with a built-in motor protection which prevents the motor being overloaded.

In the event of overloading, the current is broken and the main switch is turned off automatically.

Disconnect shredder from power supply and move the direction of rotation switch to **O** position before attempting to unblock any jams.

Allow at least 5 minutes for the motor to cool down.



Push in the overload protection button (3) to re-set, mains power can now be switched on.



If the cutting blades are jammed turn the rotation direction switch to position \uparrow , before switching the shredder back on again, to clear any clogged material.

Disconnect switch

The machine is equipped with a disconnect switch. This means that the main switch is automatically disconnected in the event of a loss of current. The machine can be started again by reconnecting the plug and turning on the main switch.

Mulching

The following types of material can be mulched in the shredder:

- Twigs and branches.
- Waste from cutting bushes.
- Waste from hedge-trimming.

Examples of materials which are not suitable for mulching include:

- Glass, metal, plastic bags, stones, fabric, earth covered roots.
- Waste that does not have a firm consistency, e.g. kitchen waste.
- Soft Leafy material.

To prevent damage to the machine, you are recommended not to exceed the following maximum sizes of twigs and branches:

- 40mm in diameter.

The material that is to be mulched is fed into the inlet chute (1) and, assuming it is not too bulky, automatically pulled down through the slowly rotating spiral cutter to the blades.

Branches and twigs should be mulched shortly after being cut. They become extremely hard when they dry out, and the maximum diameter of what can be mulched is reduced.

Heavy material or twigs will jam the blades if you let the machine cut continually. A large proportion of garden waste contains a lot of water and therefore sticks easily. Such material should be allowed to dry for a few days before being processed.

Check all the material you want to shred carefully. Make sure it doesn't contain any stones or nails as this might severely damage the shredder.

Be aware of vibrations. Heavy vibrations are caused by damaged or worn out blades. Store the shredder indoors in a dry place.

Mulching palm fronds

The GMC shredder is designed to effectively handle palm fronds, reducing them to an easily disposable waste.

If the head of the palm frond is particularly large or hard it may have to be removed before it is inserted into the shredder.

If the material is particularly fibrous or hard then you may have to loosen the blade adjustment screw (10) as outlined in section 'Adjusting the cutting gear' and run the material through once to soften it. Then retighten the adjustment screw and insert the material a second time to effectively shred it.

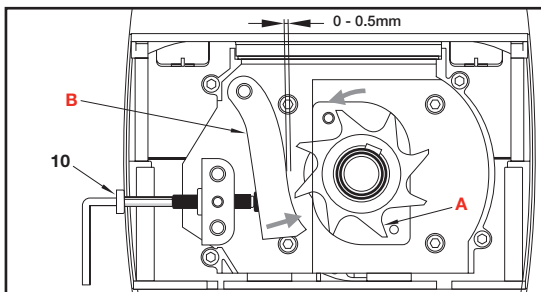
Composting

The processed material can be composted in various ways:

- The material can be placed in a heap directly on the ground (cold composting).

- The material can be placed in a plastic container, wooden crate, skeleton container or similar (cold composting).
- The material can be placed in an insulated compost holder. The heat is then held for longer and the rotting process also continues during the winter. This method produces faster results (warm composting).
- The material can be spread directly onto the garden (surface composting).

Adjusting the cutting gear



The anvil blade B should be adjusted to have a distance of 0.5 to 1mm from the cutting blade A. This distance should be kept to guarantee effective operation of the machine.

Soft materials or wet twigs can get torn instead of cut properly due to wrong adjustment. Also a blunt anvil blade from frequent use produces the same problem.

On the right hand side of the shredder you will find the blade adjustment screw (10). To adjust the distance turn the screw to the right, with the supplied allen key.

1. For lighter material, you can cut through the material completely turn the allen key clockwise half a turn, in the CUT direction.



2. If you are shredding heavy materials (such as harder or large materials) they may need to be put through the shredder twice, to crush the material before cutting it completely. To loosen the adjusting screw, turn the allen key anti-clockwise half a turn, in the CRUSH direction.

After you have completed the adjustment, check if the blade cuts efficiently. To avoid and damage to the shredder make sure that the cutting blade does not come into contact with the anvil blade.

Maintenance and storage information

WARNING. Prior to cleaning or any maintenance, always ensure the power plug has been removed from the electrical power supply.

Always wear protective gloves to avoid injury.

Generally speaking, shredders require very little maintenance. In order to maintain the efficiency of the machine and to achieve a long service life, observe the following:

- Keep the air openings clean and free of obstructing material.
- Check the customer-installed nuts and screws (tighten if necessary).
- Spray the spiral cutter after each use with an environmentally-friendly, biodegradable spray oil to protect against corrosion.

Cleaning

Always clean the shredder after each use.

WARNING. Never use a high-pressure washer or running water when cleaning the shredder!

Brush away dirt and plant residue which may be caught in the spiral cutter. Wipe clean the outside of the shredder with a cloth which has been moistened with a mild detergent and water.

Power cord maintenance

If the supply cord needs replacing, the task must be carried out by the manufacturer, the manufacturer's agent, or an authorised service centre in order to avoid a safety hazard.

Attach Your
Receipt Here

GMC customer assist

If your product needs repairing, replacing, technical service or you simply need help or advice, please contact us on our Customer Assist Line 1300 880 001 (Australia) or 0800 445 721 (New Zealand).

For prompt service we suggest you log your service request online at www.gmcservice.com.au. Should you not have access to the Internet, please contact our service department on 1300 880 001 (Australia) or 0800 445 721 (New Zealand). 7am – 7pm, 7days a week (AEST).

Please note that if repair or replacement is required, you must provide a valid original purchase receipt.

You will need the following details at hand to log your service request;

Personal details: First & Last name, address, pick up address, contact phone numbers, email address

Product details: Product number, date of purchase, retailer bought from, State & postcode, receipt number, reason for the request, copy of official purchase receipt

Attach your purchase receipt and save with this Manual for future reference.

Please refer to our website www.gmcompany.com for full GMC warranty Terms and Conditions.

GMC®

GLOBAL MACHINERY COMPANY

Download from www.Somanuals.com. All Manuals Search And Download.

Free Manuals Download Website

<http://myh66.com>

<http://usermanuals.us>

<http://www.somanuals.com>

<http://www.4manuals.cc>

<http://www.manual-lib.com>

<http://www.404manual.com>

<http://www.luxmanual.com>

<http://aubethermostatmanual.com>

Golf course search by state

<http://golfingnear.com>

Email search by domain

<http://emailbydomain.com>

Auto manuals search

<http://auto.somanuals.com>

TV manuals search

<http://tv.somanuals.com>