

**80% AFUE PERFORMANCE
COMFORTNET™ COMPATIBLE**

Goodman®

Air Conditioning & Heating

GMVC8

VARIABLE-SPEED
GAS FURNACE



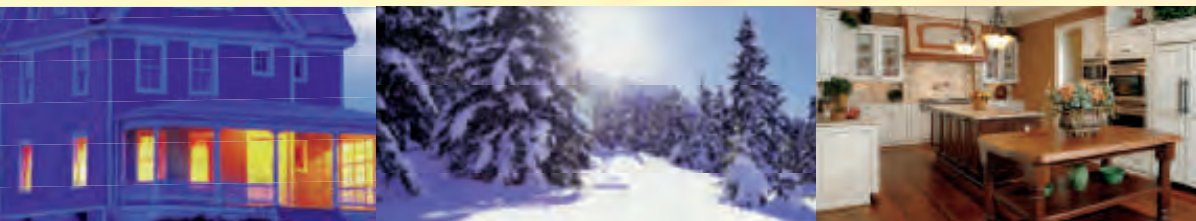
Thank goodness for Goodman.®



Air Conditioning & Heating

A COMFORTABLE VALUE

When selecting a gas furnace for your home, you are often searching to find the best combination for an ideal level of home comfort. You want to find a gas furnace that offers exceptional, dependable, and stable performance for many, many years. Most important, you want the best value possible. Faced with the decision to find a trustworthy and reliable gas furnace that delivers quiet, energy-saving operation and outstanding long-term value, the Goodman® brand GMVC8 Variable-Speed Gas Furnace may be your best option. The gas furnace in your home provides not only heating comfort, but it operates with your central air conditioner to deliver cool comfort, too. So, your final choice is doubly beneficial. Whether it's the coldest day of the year or any day of the year, with the Goodman brand GMVC8 Gas Furnace you'll be saying, "Thank goodness for Goodman.®"



ENJOY THE COMFORT AND EFFICIENCY

As a homeowner, you try to find a balance between your family's comfort and your monthly energy costs. Introducing the Goodman brand GMVC8 Gas Furnace. It's one of the most impressive furnaces we make, and we built it with your comfort in mind.

Goodman brand's GMVC8 Gas Furnace with two-stage heating and a variable-speed circulating blower provides a total comfort home-heating alternative – efficiently and economically. This furnace's variable-speed circulating blower advances home comfort by reducing temperature swings and air stratification from floor to ceiling, which reduces operating costs compared to furnaces without these features. Unlike non variable-speed furnaces that run "all on" or "all off", a Goodman brand variable-speed furnace typically runs 90% of the time in the low-heat capacity on most days, but when the weather is very cold, ramps up to high-heat capacity so that your family stays warm and snug.

Your Goodman brand furnace uses a multi-speed induced draft blower motor and variable-speed circulating blower to reduce the noise levels common in other furnaces without these features. Since this unit typically runs in low-heat stage 90% of the time, the impact of the normal high-fire sound is eliminated up to 90% of the time. Add to that a fully insulated, heavy-gauge steel cabinet, and the result is... quiet comfort.



The Goodman brand GMVC8 Gas Furnace is ComfortNet compatible. Homeowner benefits of this system include advanced diagnostics, automatic maintenance alerts, and continuous monitoring of the system's performance.

Convenient 33 3/8" height unit

THE HEART OF COMFORT



The award-winning design of the primary heat exchanger in the Goodman brand GMVC8 is unique. It's constructed from tubular aluminumized-steel and formed into a dual diameter configuration. Furthermore, the use of wrinkle-bend technology results in an extremely durable heat exchanger. A heat exchanger often is considered the essential component of any gas furnace. This combination offers one of the best levels of reliability, durability, and efficiency you'll find within the Goodman brand.

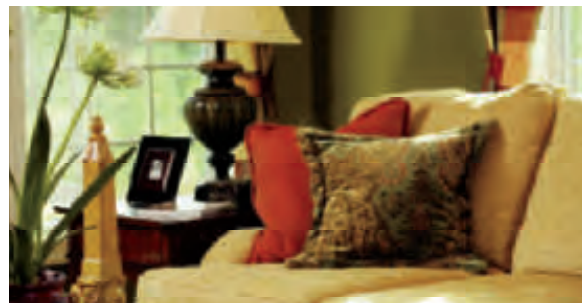


IMPRESSIVE FEATURES AND BENEFITS:

GOODMAN® BRAND GMVC8

VARIABLE-SPEED GAS FURNACE

- Aluminized-steel tubular primary heat exchanger
- ComfortNet™ Communicating Systems compatible
- Efficient and quiet, variable-speed ECM circulator motor
- Durable silicon nitride igniter
- Electronic ignition control with Dual\$aver™ technology
- Two-stage gas valve
- Electronic control board with self-diagnostics
- All models comply with California NOx emissions standards
- Corrosion-resistant vent blower
- Fully insulated, heavy-gauge steel cabinet with durable baked-enamel finish



Talk to your Goodman brand dealer about opportunities to optimize the efficiency of your new unit.



OUTSTANDING WARRANTY* PROTECTION




*Complete warranty details available from your local dealer or at www.goodmanmfg.com. To receive the 10-Year Unit Replacement Heat Exchanger Limited Warranty, Lifetime Heat Exchanger Limited Warranty (good for as long as you own your home) and 10-Year Parts Limited Warranty, online registration must be completed within 60 days of installation. Online registration is not required in California or Quebec.

ADDITIONAL INFORMATION

Before purchasing this appliance, read important information about its estimated annual energy consumption, yearly operating cost, or energy efficiency rating that is available from your retailer.



Thank goodness for Goodman.®

MODELS	HEAT-EFFICIENCY AFUE	LIMITED PARTS WARRANTY* COVERAGE			 COMPATIBLE	MOTOR TYPE	TYPE OF IGNITER	TUBULAR DUAL-DIAMETER PRIMARY HEAT EXCHANGER
		10-Year Unit Replacement Heat Exchanger Limited Warranty*	Lifetime Heat Exchanger Limited Warranty*	10-Year Parts Limited Warranty*				
GMVC8	80%	•	•	•	•	Variable-Speed ECM	Silicon Nitride	•
GME8	80%	•	•	•		Multi-Speed ECM (EEM)	Silicon Nitride	•
GMH8	80%	•	•	•		Multi Speed	Silicon Nitride	•
GDH8 Downflow	80%	•	•	•		Multi Speed	Silicon Nitride	•
GMS8	80%		•	•		Multi Speed	Hot Surface	•
GDS8 Downflow	80%		•	•		Multi Speed	Silicon Carbide	•
GHS8	80%		•	•		Multi-Speed Hi-Airflow	Silicon Carbide	•

*Complete warranty details available from your local dealer or at www.goodmanmfg.com. To receive the 10-Year Unit Replacement Heat Exchanger Limited Warranty, Lifetime Heat Exchanger Limited Warranty (good for as long as you own your home) and 10-Year Parts Limited Warranty, online registration must be completed within 60 days of installation. Online registration is not required in California or Quebec.



GOODMAN – A MEMBER OF DAIKIN GROUP

Daikin Industries, Ltd. (DIL) is a Fortune 1000 company with more than 49,000 employees worldwide, making it the number one residential and commercial HVAC manufacturer in the world. Daikin is engaged primarily in the development, manufacture, sales and aftermarket support of heating, ventilation, air conditioning and refrigeration equipment, refrigerants and other chemicals, as well as oil hydraulic products. DIL is headquartered in Osaka, Japan, has manufacturing operations in 18 countries and a sales presence in more than 90 countries.

The company provides innovative, premium quality indoor climate management solutions to meet the changing needs of residential, commercial and industrial customers.



Air Conditioning & Heating



Our continuing commitment to quality products may mean a change in specifications without notice.

© 2014 Goodman Manufacturing Company, L.P. · Houston, Texas · USA

CB-GMVC8 02-14

www.goodmanmfg.com
 Download from Www.Somanuals.com. All Manuals Search And Download.

Free Manuals Download Website

<http://myh66.com>

<http://usermanuals.us>

<http://www.somanuals.com>

<http://www.4manuals.cc>

<http://www.manual-lib.com>

<http://www.404manual.com>

<http://www.luxmanual.com>

<http://aubethermostatmanual.com>

Golf course search by state

<http://golfingnear.com>

Email search by domain

<http://emailbydomain.com>

Auto manuals search

<http://auto.somanuals.com>

TV manuals search

<http://tv.somanuals.com>