



Air Conditioning & Heating

SUBMITTAL DATA FORM

Job Name _____

Location _____

Purchaser _____

Order No. _____

Engineer _____

Unit No. _____

Model No. _____

Unit Designation _____

Performance Data Certified By:



GPH13M COMMERCIAL 3- TO 5-TON SELF-CONTAINED PACKAGED HEAT PUMP WITH R-410A

Standard Features

- Energy-efficient compressor with internal relief valve
- Fully charged with R-410A chlorine-free refrigerant
- EEM blower motor; PSC blower motor on 3-ton units
- Convertible airflow — horizontal or downflow
- Copper tube/aluminum fin coil
- Totally enclosed, permanently lubricated condenser fan motor
- Electric heat kit available as a field-installed accessory

Cabinet Features

- Heavy-gauge galvanized-steel cabinet
- Attractive Architectural Gray powder-paint finish
- Fully insulated blower compartment with convenient access panels
- Louvered condenser coil protection
- One footprint; two heights

Contents

- Performance Data
- Certified Dimensions
- Accessories List



* Complete warranty details available at www.goodmanmfg.com.



PERFORMANCE DATA**Cooling Performance**

Tota Capacity _____ MBH
 Sensible Capacity _____ MBH
 Outdoor Design TMP _____ °F DB / WB
 Air Temp entering _____
 Evaporator Coil _____ °F
 Power Input Required _____ kW
 (less blower motor)

Heating Performance

Total Heating Capacity _____ kW
 _____ BTU/h

Supply Air Blower Performance

Total Supply Air _____ CFM
 Ext. Static Pressure _____ IWG
 Blower Speed _____ RPM
 Power Output Required _____ BHP
 Motor Ratings _____ HP
 Power Input Required _____ kW

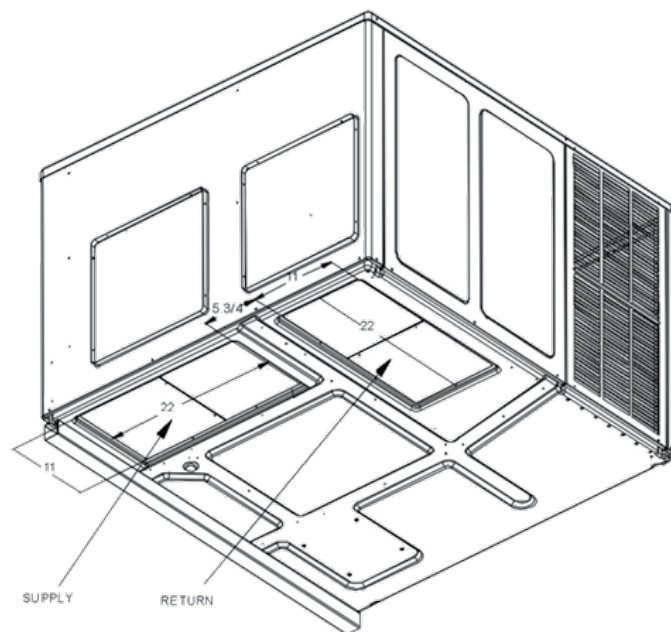
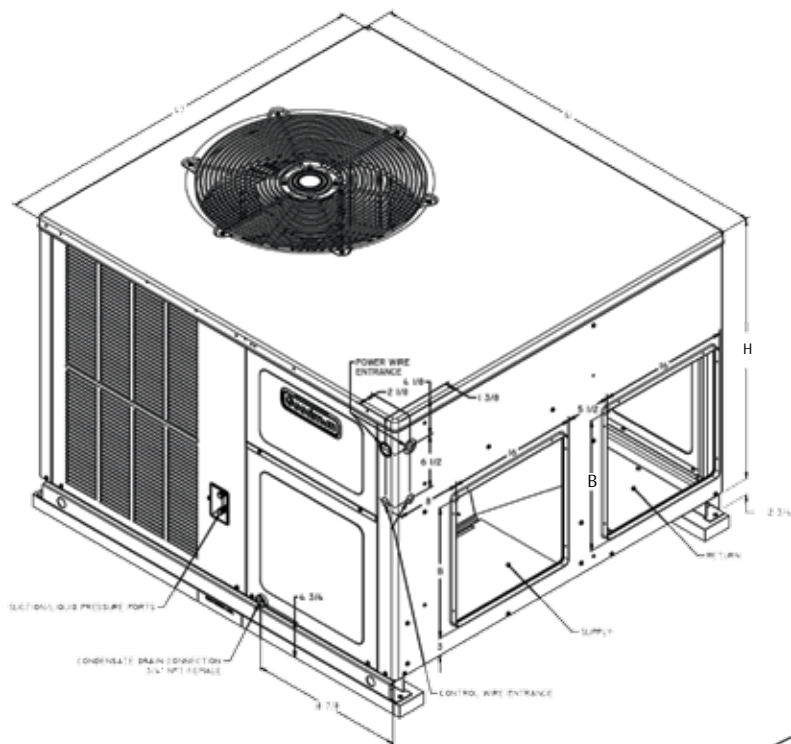
Electrical Data

Power Supply _____
 Total Unit Amps _____ Amps
Max Overcurrent Device:
 Fuse _____ Breaker _____ Amps _____

JOB NAME

LOCATION

DIMENSIONS



DIMENSIONS

MODEL	W"	D"	H"	B	H
GPH1336M43	47	51	34 $\frac{1}{4}$ "	16"	32 $\frac{1}{2}$ "
GPH1348M43	47	51	42 $\frac{3}{4}$ "	18"	40"
GPH1360M43	47	51	42 $\frac{3}{4}$ "	18"	40"

FILTERS

MODEL	DIMENSIONS	QTY.
GPH13MFR102 (for medium models)	16" x 25" x 2"	1
GPH13MFR103 (for large models)	20" x 25" x 2"	2

ACCESSORIES LIST

ITEM	DESCRIPTION	√
GPH13MFR102/103*	Internal filter rack for Downflow Applications	
OT18-60A	Outdoor Thermostat Kit with Lockout Stat	
OT/EHR18-60	Emergency Heat Relay kit	
PGC101/102/103*	Roof Curb for GPC13M-/GPH13M- Electric/Electric Packaged Unit	
GPH13MED102/103*	Downflow Economizer for GPC13M-/GPH13M- Packaged Units	
PCFR101-103	External Horizontal Filter Rack for Goodman/Amana Packaged Units	
PGMDD101/102*	Manual Damper for Downflow Application — Medium Chassis	
PGMDMD101/102*	Motorized Damper for Downflow Application — Medium Chassis	
PGMDD103*	Manual Damper for Downflow Application — Large Chassis	
PGMDMD103*	Motorized Damper for Downflow Application — Large Chassis	
PGMDH102*	Manual 25% Fresh Air Damper — Horizontal Applications	
PGMDH103*	Manual 25% Fresh Air Damper — Horizontal Applications	
PGMDMH102*	Motorized 25% Fresh Air Damper — Horizontal Applications	
PGMDMH103*	Motorized 25% Fresh Air Damper — Horizontal Applications	
SQRPG101/102*	Square-to-Round Adapter with 16" Round — Downflow Applications	
SQRPG103*	Square-to-Round Adapter with 18" Round — Downflow Applications	
SQRPGH101/102*	Square-to-Round Adapters for GPC/GPH- Packaged Units 16"&14"	
SQRPGH103*	Square-to-Round Adapters for GPC/GPH- Packaged Units 18"&14"	

* Offered by McDaniel Metals • Main: (281) 987-8400 • Fax: (281) 987-9494



Free Manuals Download Website

<http://myh66.com>

<http://usermanuals.us>

<http://www.somanuals.com>

<http://www.4manuals.cc>

<http://www.manual-lib.com>

<http://www.404manual.com>

<http://www.luxmanual.com>

<http://aubethermostatmanual.com>

Golf course search by state

<http://golfingnear.com>

Email search by domain

<http://emailbydomain.com>

Auto manuals search

<http://auto.somanuals.com>

TV manuals search

<http://tv.somanuals.com>