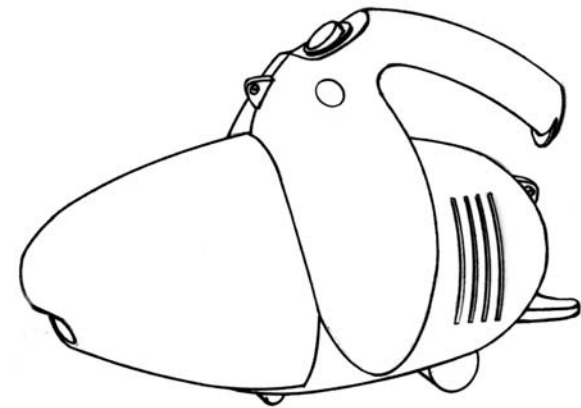


EURO-PRO X™

**Ultra
Shark**

Model EP366
120v., 60Hz, 5.8 Amps.

USE AND CARE INSTRUCTIONS



USA: EURO-PRO Operating LLC
94 Main Mill Street, Door 16
Plattsburgh, NY 12901

Canada: EURO-PRO Operating LLC
4400 Bois Franc
St. Laurent, QC H4S 1A7

Tel.: 1 (800) 798-7398
www.sharkvac.com



ONE (1) YEAR LIMITED WARRANTY

EURO-PRO Operating LLC warrants this product to be free from defects in material and workmanship for a period of one (1) year from the date of the original purchase, when utilized for normal household use, subject to the following conditions, exclusions and exceptions.

If your appliance fails to operate properly while in use under normal household conditions within the warranty period, return the complete appliance and accessories, freight prepaid to **EURO-PRO Operating LLC**:

US: 94 Main Mill Street, Door 16, Plattsburgh, NY 12901

Canada: 4400 Bois Franc, St. Laurent, QC H4S 1A7

If the appliance is found to be defective in material or workmanship, **EURO-PRO Operating LLC** will repair or replace it free of charge. Proof of purchase date and \$8.95 to cover the cost of return shipping and handling must be included. *

Non-durable parts including, without limitation, dust bags, filters, brushes and electrical parts which normally require replacement are specifically excluded from warranty.

The liability of **EURO-PRO Operating LLC** is limited solely to the cost of the repair or replacement of the unit at our option. This warranty does not cover normal wear of parts and does not apply to any unit that has been tampered with or used for commercial purposes. This limited warranty does not cover damage caused by misuse, abuse, negligent handling or damage due to faulty packaging or mishandling in transit. This warranty does not cover damage or defects caused by or resulting from damages from shipping or repairs, service or alterations to the product or any of its parts, which have been performed by a repair person not authorized by **EURO-PRO Operating LLC**.

This warranty is extended to the original purchaser of the unit and excludes all other legal and/or conventional warranties. The responsibility of **EURO-PRO Operating LLC** if any, is limited to the specific obligations expressly assumed by it under the terms of the limited warranty. **In no event is EURO-PRO Operating LLC** liable for incidental or consequential damages of any nature whatsoever. Some states do not permit the exclusion or limitation of incidental or consequential damages, so the above may not apply to you.

This warranty gives you specific legal rights, and you may also have other rights which vary from state to state.

***Important:** Carefully pack item to avoid damage in shipping. Be sure to include proof of purchase date and to attach tag to item before packing with your name, complete address and phone number with a note giving purchase information, model number and what you believe is the problem with item. We recommend you insure the package (as damage in shipping is not covered by your warranty). Mark the outside of your package "ATTENTION CUSTOMER SERVICE".



OWNERSHIP REGISTRATION CARD

Please fill out and mail the product registration card within ten (10) days of purchase. The registration will enable us to contact you in the unlikely event of a product safety notification. By returning this card you acknowledge to have read and understood the instructions for use, and warnings set forth in the accompanying instructions.

RETURN TO **EURO-PRO Operating LLC**: 94 Main Mill Street, Plattsburgh, NY 12901

Appliance model

Date purchased

Name of store

Owner's name

Address

City

State

Zip code

IMPORTANT SAFEGUARDS

When using an electrical appliance, basic safety precautions should always be observed, including the following

READ ALL INSTRUCTIONS BEFORE USING YOUR TURBO HAND VACUUM.

WARNING: To reduce the risk of fire, electrical shock, or injury:

1. Do not leave appliance when plugged in. Unplug from outlet when not in use and before servicing.
2. Do not use outdoors or on wet surfaces.
3. Do not allow to be used as a toy. Close attention is necessary when used by or near children.
4. Use only as described in this manual. Use only manufacturer's recommended attachments.
5. Do not use with damaged cord or plug. Do not use hand vacuum if it has been dropped, damaged, left outdoors, or dropped in water. Return it to **EURO-PRO Operating LLC** for examination, repair or adjustment.
6. Do not pull or carry by cord, use cord as a handle, close a door on cord, or pull cord around sharp edges or corners.
7. Do not run appliance over cord. Keep cord away from heated surfaces.
8. Do not unplug by pulling on cord. To unplug, grasp the plug, not the cord.
9. Do not handle plug or appliance with wet hands.
10. Do not put any object into openings. Do not use with any opening blocked; keep free of dust, lint, hair and anything that may reduce air flow.
11. Keep hair, loose clothing, fingers, and all parts of body away from openings and moving parts.
12. Do not pick up anything that is burning or smoking, such as cigarettes, matches, or hot ashes.
13. Turn off the control before unplugging.
14. Use extra care when cleaning on stairs.
15. Do not use to pick up flammable or combustible liquids such as gasoline or use in areas where they may be present.
16. Look on your hand vacuum and follow all label and marking instructions.
17. Use only extension cords UL or cUL-rated at 15 amperes. Extension cords rated for less amperage may overheat. Care should be taken to arrange the cord so that the cord cannot be pulled or tripped over.
18. Keep end of hose, wands and other openings away from your face and body.
19. **Do not use the hand vacuum cleaner without dust cup filter in place.**
20. Always unplug this appliance before connecting or disconnecting hand vacuum hose.
21. Store the hand vacuum indoors. Put the hand vacuum away after use to prevent tripping accidents.
22. Using improper voltage may result in damage to the motor and possible injury to the user. Correct voltage is listed on the rating label.
23. Use only on dry, indoor surfaces.
24. Do not use for any purpose other than described in this user's guide.

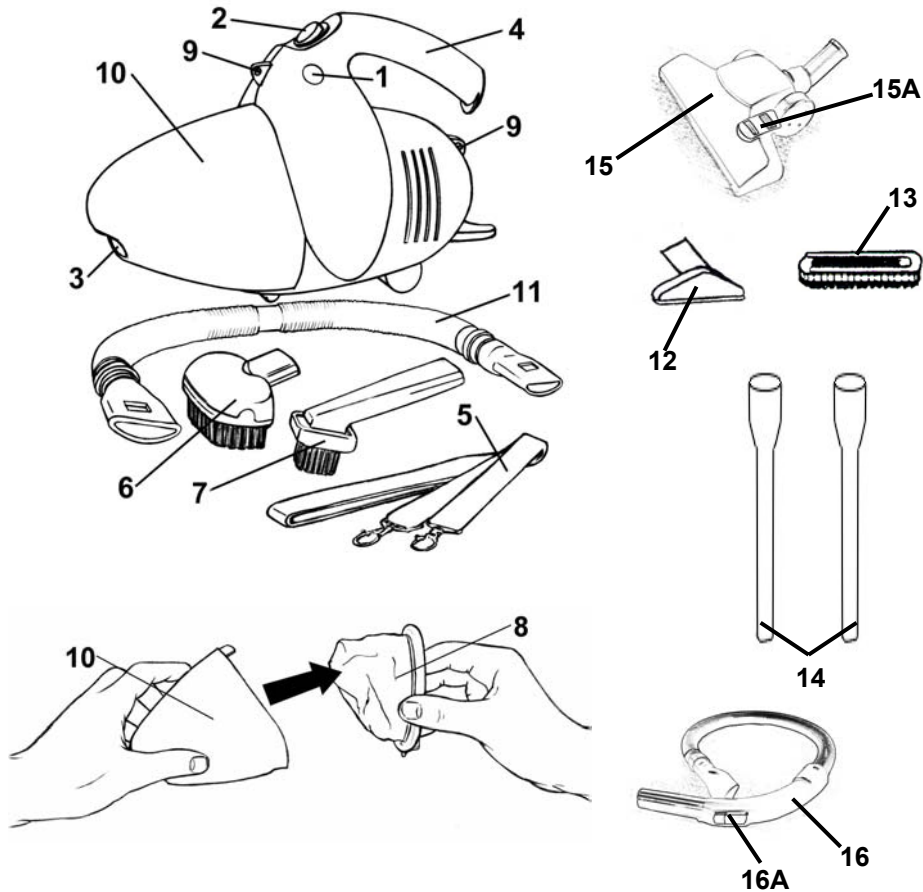
SAVE THESE INSTRUCTIONS

FOR HOUSEHOLD USE ONLY

WARNING: To reduce the risk of electric shock, this appliance has a polarized plug (one blade is wider than the other). This plug will fit in a polarized outlet only one way. If the plug does not fit fully in the outlet, reverse the plug. If it still does not fit, contact a qualified electrician to install the proper outlet. Do not modify the plug in any way.

Ultra Shark

Model EP366
120V., 60Hz, 5.8 Amps



- | | |
|---|---|
| 1. Push to Open Dust Cup (Container) | 11. Flexible Hose |
| 2. On/Off Power Switch | 12. Convertible Brush |
| 3. Suction Hole | 13. Bristle Brush (attaches to convertible brush #12) |
| 4. Handle | 14. Extension Tubes (2) |
| 5. Shoulder Strap | 15. Floor-to-Carpet Attachment |
| 6. Cleaning Brush | 15A. Floor-to-Carpet Lever |
| 7. Crevice Brush | 16. Curved Hose/Wand Extension |
| 8. Dust Cup Filter | 16A. Variable Suction Control |
| 9. Holes for Attaching the Shoulder Strap | |
| 10. Dust Cup (Container) | |

TO ORDER REPLACEMENT DUST CUP FILTERS

To order, send check, money order or credit card authorization to:

EURO-PRO Operating LLC
94 Main Mill Street, Door 16
Plattsburgh, NY 12901

or call **EURO-PRO** Customer Service at: 1 (800) 798-7398

Monday to Friday 8:30 A.M. - 5:00 P.M. Eastern Standard Time

Please Note:

The Shark Dust Cup Filters are washable.

Important:

Make sure that Dust Cup Filter is completely dry before inserting back in the hand vacuum.

TROUBLESHOOTING GUIDE

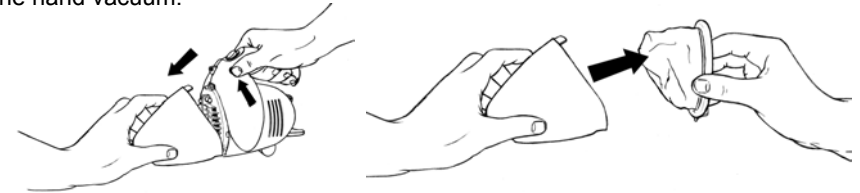
PROBLEM	POSSIBLE REASON	POSSIBLE SOLUTION
HAND VACUUM WILL NOT OPERATE	<ol style="list-style-type: none"> 1. Power cord not firmly plugged into outlet. 2. No power in wall outlet. 3. Needs servicing. 	<ol style="list-style-type: none"> 1. Plug unit in firmly. 2. Check fuse or breaker. Replace fuse/reset breaker. 3. Call 1 (800) 798-7398.
HAND VACUUM WILL NOT PICK-UP OR SUCTION POWER IS WEAK	<ol style="list-style-type: none"> 1. Dust cup filter is full. 2. Unit clogged. 3. Dust cup filter needs cleaning. 	<ol style="list-style-type: none"> 1. Empty dust cup filter – (see page 4). 2. Turn unit off and unplug from wall outlet. Remove dust cup filter and check for object(s) in air duct and remove. 3. Clean or replace dust cup filter. (see page 4).
DUST ESCAPING FROM HAND VACUUM	<ol style="list-style-type: none"> 1. Dust cup filter is full. 2. Dust cup filter is not installed correctly. 3. Puncture/hole in dust cup filter. 	<ol style="list-style-type: none"> 1. Empty dust cup filter. 2. Review dust cup filter instructions. (see page 4) 3. Replace dust cup filter. (see page 4)
HAND VACUUM HOSE OR BRUSHES WILL NOT PICK-UP	<ol style="list-style-type: none"> 1. Hose clogged. 2. Dust cup filter is full. 	<ol style="list-style-type: none"> 1. Remove hose and/or brushes. Remove obstruction from hose. 2. Empty and clean dust cup filter.

ASSEMBLY

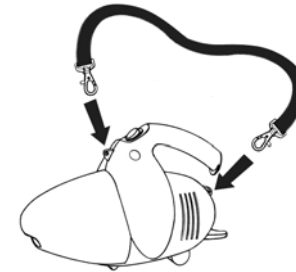
Warning: Always unplug from electrical outlet before opening the dust cup (container) (10).

Note: Dust cup filter (8) must be used when operating the hand vacuum.

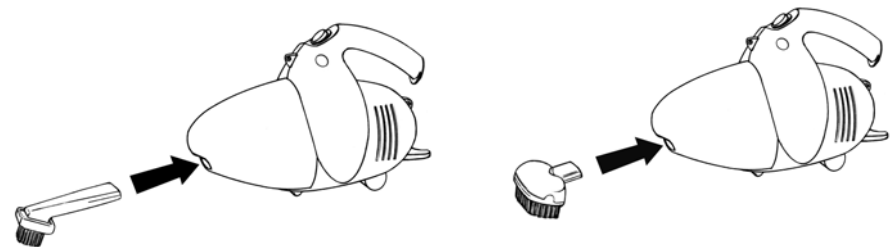
1. To open the dust cup (container) (10), push button (1) and pull out the dust cup (10). Verify that the dust cup filter (8) is inside, then attach the dust cup (container) (10) to the hand vacuum.



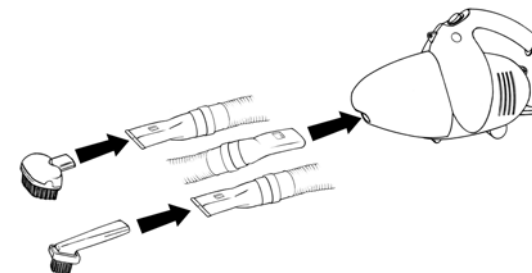
2. To use the Hand Vacuum with the shoulder strap (5), attach it to the unit as shown below.



3. To attach the cleaning brush (6) or crevice brush (7) to the Hand Vacuum, push brush into the suction hole (3), as shown below.



4. To use the flexible hose (11), push the end of the hose into the suction hole (3), then attach the desired brush (6 or 7) to the other end of the flexible hose (11), as shown below.



HOW TO OPERATE YOUR HAND VACUUM

Plug into 120V outlet.

1. Hold the hand vacuum firmly with your hand on the Handle (4).
2. Push the On/Off Power Switch (2) to "On" position.
3. Start vacuuming.

CAUTION: The Hand Vacuum is a very powerful unit. Make sure that you hold it firmly, otherwise it can slip out of your hand and cause injury.

USING THE UNIT WITH FLOOR-TO-CARPET ATTACHMENT

1. Slide the narrow end of one of the extension tubes (14) into the wide end of the other extension tube.
2. Slide the narrow end of the long extension tube inside the Floor-to-Carpet attachment (15).
3. Slide the wide end of the assembled extension tube (14) into the round end of the Curved Hose / Wand Extension (16).
4. Slide the narrow, oval side of the Curved Hose/Wand Extension (16) into the suction hole (3) of the vacuum unit.
5. Attach the shoulder strap (5) to the vacuum unit and hang it from your shoulder.
6. You can now proceed to vacuum your carpet or hard floor.

Please Note:

To vacuum wooden floors, press Floor-to-Carpet Lever (15A) down, to lower the bristles down.

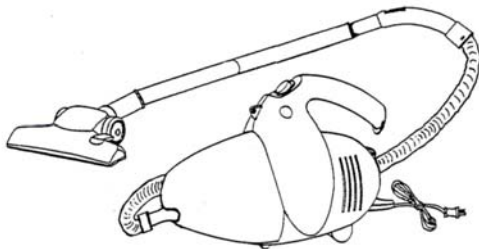
To vacuum carpets, press Floor-to-Carpet Lever (15A) up, to raise the bristles up. Very flat carpets can sometimes be vacuumed with the bristles down.

Please Note: If floor nozzle does not move easily, we suggest that you reduce suction power on the variable suction control (16A).

Please Note:

The Variable Suction Control (16A) will allow you to adjust the amount of suction by sliding it up or down.

Note: Variable length can be obtained by using one, or both of the extension tubes.

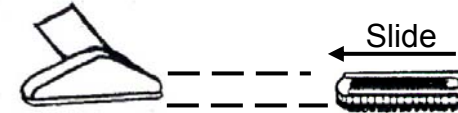


4

USING THE CONVERTIBLE BRUSH & BRISTLE BRUSH (12 & 13)

In order to vacuum high, hard to reach places such as ceilings, curtains/drapes, etc., use the Convertible Brush and Bristle Brush (12 & 13) as follows:

1. Remove the Floor - to - Carpet attachment (15).
2. Insert the Convertible Brush (12).
3. If you need a brush action, slide on the Bristle Brush (13) onto the Convertible Brush (12).
4. When vacuuming drapes/curtains, we recommend adjusting the variable suction control (16A).



CHANGING & CLEANING THE DUST CUP FILTER

Warning: Always unplug from electrical outlet before opening the Dust Cup (container) (10).

1. To open the Dust Cup (container) (10), push button (1) and pull out the Dust Cup (container) (10), (fig. 1).
2. Pull out the Dust Cup Filter (8), (fig. 2).
3. Empty the dust from the Dust Cup Filter (8).
4. Rinse the Dust Cup Filter (8) in cold water, and then wait until it dries completely before replacing it into the Dust Cup (container) (10).
5. Place the Dust Cup Filter (8) carefully into the Dust Cup (container) (10).
6. Attach the Dust Cup (container) (10) to the Hand Vacuum.

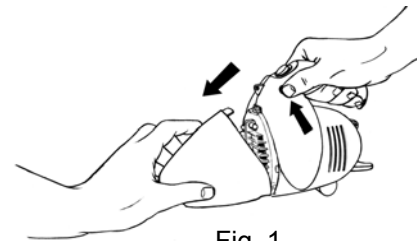


Fig. 1

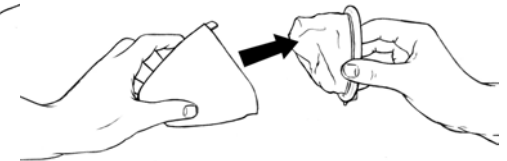


Fig. 2

CAUTION: The suction hole (3) must be open, free of any obstructions at all times. Otherwise, the motor will overheat and could become damaged.

5

Free Manuals Download Website

<http://myh66.com>

<http://usermanuals.us>

<http://www.somanuals.com>

<http://www.4manuals.cc>

<http://www.manual-lib.com>

<http://www.404manual.com>

<http://www.luxmanual.com>

<http://aubethermostatmanual.com>

Golf course search by state

<http://golfingnear.com>

Email search by domain

<http://emailbydomain.com>

Auto manuals search

<http://auto.somanuals.com>

TV manuals search

<http://tv.somanuals.com>