



## Garment Steamer/Iron

Model GI460 W

115/120V., 60 Hz., 230/240 V., 50 Hz.

800 Watts/870 Watts

## Use and Care Instructions



**Congratulations! You are the owner of a Garment Steamer/Iron. To fully enjoy the advantages of your appliance, please take a few minutes to read all the “Use & Care Instructions” and keep the instructions handy for easy reference. Please review the product warranty and mail the owner registration form.**

For information or assistance:

**EURO-PRO Operating LLC**

21 Lawrence Paquette Industrial Drive

Champlain, NY 12919

Tel.:1 (800) 798-7398

# IMPORTANT SAFEGUARDS

**IMPORTANT:** Be sure that dual voltage selector is in the correct position before operating the garment steamer/iron. Before plugging in, read the information about dual voltage operation in the instruction manual. This appliance was set at the factory to operate at 115/120 V., 60 Hz.

When using your garment steamer/iron, basic safety precautions should always be followed, including the following:

1. Read all instructions carefully.
2. Use garment steamer/iron only for its intended use.
3. To protect against risk of electrical shock, do not immerse the garment steamer/iron in water or other liquids. Always turn the garment steamer/iron to "MIN" before plugging in or unplugging from outlet.
4. Never yank cord to disconnect from outlet. Grasp plug and pull to disconnect.
5. Do not allow cord to touch hot surfaces. Let garment steamer/iron cool completely before putting away.
6. Always disconnect garment steamer/iron from electrical outlet when filling with water, emptying, or when not in use.
7. Do not operate garment steamer/iron with a damaged cord, or after the appliance has been dropped or damaged in any manner. To avoid the risk of electric shock, do not disassemble the appliance. Return the unit to Customer Service for examination and repair. Incorrect

- reassembly can cause the risk of electric shock when the garment steamer/iron is used.
8. Close supervision is necessary for any appliance being used by or near children. Do not leave garment steamer/iron unattended while connected or on an ironing board.
9. Burns can occur from touching hot metal parts, hot water or steam. Use caution when you turn a steam iron upside down; there may be hot water in the reservoir.
10. Loop cord loosely around garment steamer/iron when storing.
11. **This appliance is for household use only.**

## SPECIAL INSTRUCTIONS

1. To avoid a circuit overload, do not operate another high-wattage appliance on the same circuit.
2. If an extension cord is absolutely necessary, use a 10-ampere cord. Cords rated for less amperage may overheat. Use care to arrange the cord so that it cannot be pulled or tripped over.

# SAVE THESE INSTRUCTIONS

## For Household Use Only

**POLARIZED PLUG:** This appliance has a polarized plug (one blade is wider than the other). As a safety feature, this plug will fit into a polarized outlet only one way. If the plug does not fit fully into the outlet, reverse the plug. If it still does not fit, contact a qualified electrician. Do no attempt to defeat this safety feature.

Model GI460 W

# EURO-PRO

## ONE (1) YEAR LIMITED WARRANTY

**EURO-PRO Operating LLC** warrants this product to be free from defects in material and workmanship for a period of one (1) year from the date of the original purchase, when utilized for normal household use, subject to the following conditions, exclusions and exceptions.

If your appliance fails to operate properly while in use under normal household conditions within the warranty period, return the complete appliance and accessories, freight prepaid to

**EURO-PRO Operating LLC**, 21 Lawrence Paquette Ind. Dr., Champlain, N.Y. 12919

If the appliance is found by **EURO-PRO Operating LLC** to be defective in material or workmanship, **EURO-PRO Operating LLC** will repair or replace it free of charge. Proof of purchase date and \$ 9.95 to cover the cost of return shipping and handling must be included.\*

The liability of **EURO-PRO Operating LLC** is limited solely to the cost of the repair or replacement of the unit at our option. This warranty does not cover normal wear of parts and does not apply to any unit that has been tampered with or used for commercial purposes. This limited warranty does not cover damage caused by misuse, abuse, negligent handling or damage due to faulty packaging or mishandling in transit. This warranty does not cover damage or defects caused by or resulting from damages from shipping or repairs, service or alterations to the product or any of its parts, which have been performed by a repair person not authorized by **EURO-PRO Operating LLC**.

This warranty is extended to the original purchaser of the unit and excludes all other legal and/or conventional warranties. The responsibility of **EURO-PRO Operating LLC** if any, is limited to the specific obligations expressly assumed by it under the terms of the limited warranty. **In no event is EURO-PRO Operating LLC** liable for incidental or consequential damages of any nature whatsoever. Some states do not permit the exclusion or limitation of incidental or consequential damages, so the above may not apply to you.

This warranty gives you specific legal rights, and you may also have other rights which vary from state to state.

**\*IMPORTANT: Carefully pack item to avoid damage in shipping. Be sure to include proof of purchase date and to attach tag to item before packing with your name, complete address and phone number with a note giving purchase information, model number and what you believe is the problem with item. We recommend you insure the package (as damage in shipping is not covered by your warranty). Mark the outside of your package "ATTENTION CUSTOMER SERVICE". We are constantly striving to improve our products, therefore the specifications contained herein are subject to change without notice.**



## OWNERSHIP REGISTRATION CARD

Please fill out and mail the product registration card within ten (10) days of purchase in order to validate the foregoing Limited Warranty. The registration will enable us to contact you in the unlikely event of a product safety notification. By returning this card you acknowledge to have read and understood the instructions for use, and warnings set forth in the accompanying instructions.

**RETURN TO: EURO-PRO Operating LLC**, 21 Lawrence Paquette Ind. Dr. Champlain, NY 12919

**Model GI460 W**

Appliance model

Date purchased

Name of store

Owner's name

Address

City

State

Zip code

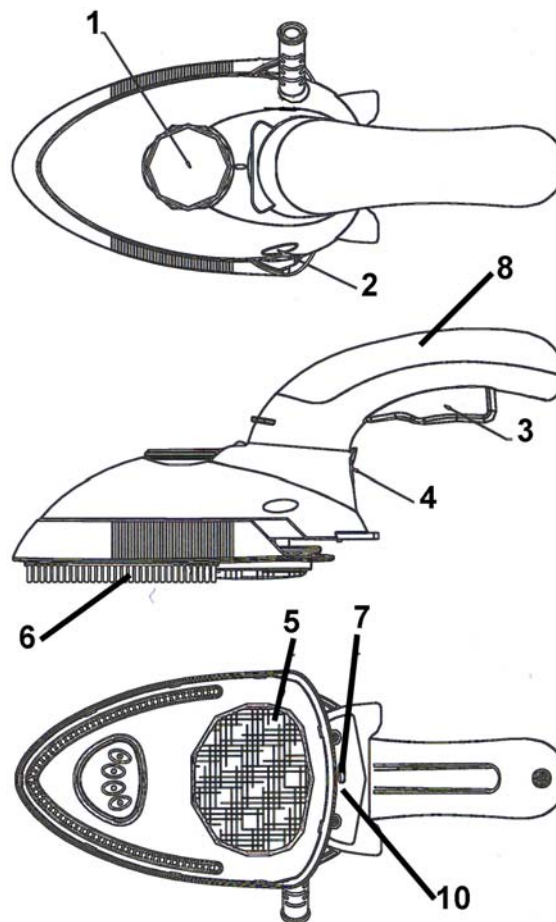
Printed in China

10

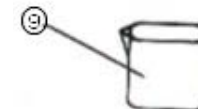
## TROUBLESHOOTING

PROBLEM	POSSIBLE REASONS & SOLUTIONS
Garment Steamer/Iron does not heat	<ul style="list-style-type: none"> <li>• Make sure that the plug is securely in the socket.</li> <li>• Temperature setting too low. Turn to higher setting.</li> </ul>
Pilot light goes On and Off	<ul style="list-style-type: none"> <li>• This is normal. The light goes On and Off as the thermostat is switching the heating element On and Off to maintain the selected temperature.</li> </ul>
Some odor or small particles come out of steam vents of new iron	<ul style="list-style-type: none"> <li>• This is normal. Follow instructions for first use and allow iron to steam through 2-3 fillings &amp; press the steam trigger occasionally to eliminate small white particles.</li> </ul>
Garment Steamer/Iron does not steam	<ul style="list-style-type: none"> <li>• Water tank may be empty or water level is very low. Add water.</li> <li>• Make sure that the temperature control dial is correctly set. For maximum steam, (setting 'Max' on steam control), temperature control dial should be set on '...'. .</li> <li>• Make sure the iron has reached the selected temperature by confirming that the pilot light has gone "Off". For more steam, turn temperature dial to higher setting, e.g. '...'. .</li> <li>• If temperature setting is correct and there is no steam, <u>gently</u> tap the soleplate on the ironing board a few times. Move the temperature control dial from 'MIN' to 'Max' a few times.</li> </ul>
Water droplets coming from steam vents	<ul style="list-style-type: none"> <li>• Iron may not be hot enough. Set temperature control dial to the 'Max' position. Always allow iron sufficient time to heat up (pilot light goes off).</li> <li>• Overuse of steam trigger. Allow more time between each burst.</li> <li>• Iron may have been overfilled. Turn iron off, empty water and follow instructions for filling.</li> <li>• Steam performance may be low if iron requires seasoning. To season, use regular tap water for 1 or 2 tanks until steam performance improves.</li> </ul>

## GETTING TO KNOW YOUR GARMENT STEAMER/IRON



1. Temperature Control Dial
2. Red Pilot Light
3. Steam Trigger
4. Water Inlet Cover
5. Red Lint Brush
6. Bristle Garment Brush
7. Locking Tab
8. Swivel Handle
9. Water Measuring Beaker
10. Dual Voltage Selector (not shown)



### Technical Specifications

Voltage:	115/120 V., 60Hz. 230/240 V., 50 Hz.
Power:	800 Watts/870 Watts

## BEFORE FIRST USE

Remove any labels, stickers or tags which may be attached to the body or soleplate of the garment steamer/iron before using the appliance. Read all instructions for use carefully. Always follow the Important Safeguards.

### IMPORTANT

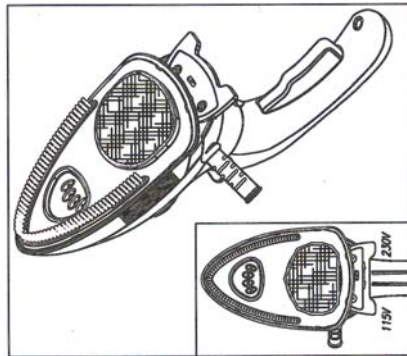
The first time an iron is used, some odor and small white particles may come out of the steam vents. This is perfectly normal and will cease to occur after the iron has been in use for a short while.

Before you start using your garment steamer/iron, follow the instructions in the manual and do the following in order to eliminate any odor and small white residue particles and to ensure optimum steam performance.

- Fill the garment steamer/iron with regular tap water.
- Set the temperature control dial to its highest setting.
- The pilot light will go off to indicate that the garment steamer/iron has reached the selected temperature.
- Keep the iron in a horizontal position and allow it to steam until the water runs out.
- Press the steam trigger to eliminate white residue particles.
- Repeat this procedure through 2 or 3 fillings.

## OPERATING INSTRUCTIONS

Before using your iron, check the voltage and type of plug that is required for your location. If necessary, readjust the dual voltage switch according to local voltage - 115/120V, 60 Hz., 230/240V, 50 Hz. This is accomplished by sliding the dual voltage control switch located in the rear of the iron to the corresponding voltage setting. Note: The voltage selector is preset at the factory for use on 115/120V, 60 Hz. N. A. household current.



**Caution:** Always disconnect the iron before adjusting the dual voltage switch to the correct voltage setting.

## IRONING CHART

**NOTE:** Before starting to iron or steam delicate fabrics, it is best to first test the temperature of the garment steamer/iron on a hem or an inside seam.

To select garment steamer/iron temperature, align temperature selected on dial with the indicator on the water tank.

DIRECTIONS ON LABEL					
FABRIC		SYNTHETIC FIBERS, e.g. acrylic, nylon polyester	SILK WOOL	COTTON LINEN	Please note that  on the label means "THIS ARTICLE CANNOT BE IRONED!"
TEMP. CONTROL		MIN ●	● ●	● ● ●	
BURST OF STEAM					
Set temperature to "MAX"					

**DRY IRONING**

All marked settings on the temperature dial can be used for dry ironing.

1. Plug the cord into a household electrical outlet (see page 3 for voltage settings). The pilot light will go "On", indicating that the iron is heating up.
2. Set Temperature Control Dial to desired temperature setting.
3. Place garment steamer/iron on its heel (on a stable, protected surface) while iron is warming to desired temperature.
4. When the iron has reached the desired temperature, the pilot light will go "Off".



**EMPTYING, CLEANING & STORING THE GARMENT STEAMER/IRON**

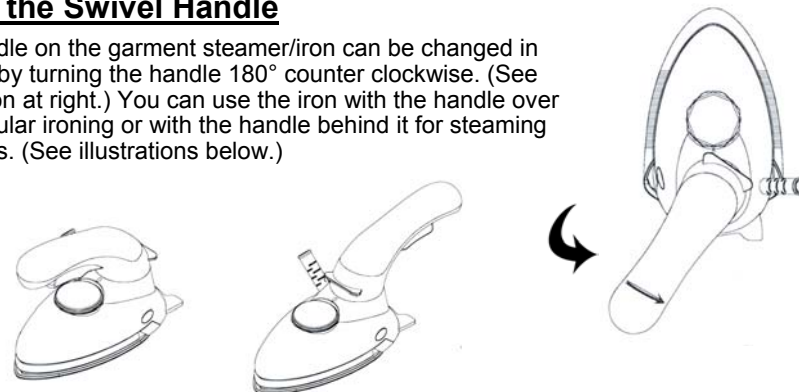
Always empty and clean your garment steamer/iron after each use and before storing.

1. Turn the temperature control dial to the "MIN" position
2. Unplug the power cord from the electrical outlet.
3. Empty the garment steamer/iron of all remaining water in the water reservoir.
4. Allow the unit to cool down before cleaning.
5. When the garment steamer/iron has cooled down completely, scale and other residue can be wiped off the soleplate with a damp cloth.
6. Store the garment steamer/iron in the upright position.

**WARNING! Use caution when emptying the garment steamer/iron. Burns may occur from touching hot metal surfaces, hot water or steam.**

**Using the Swivel Handle**

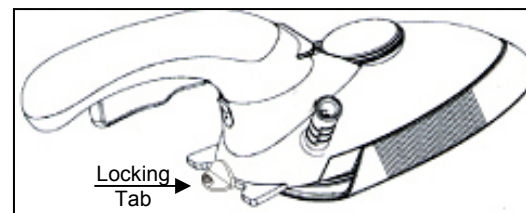
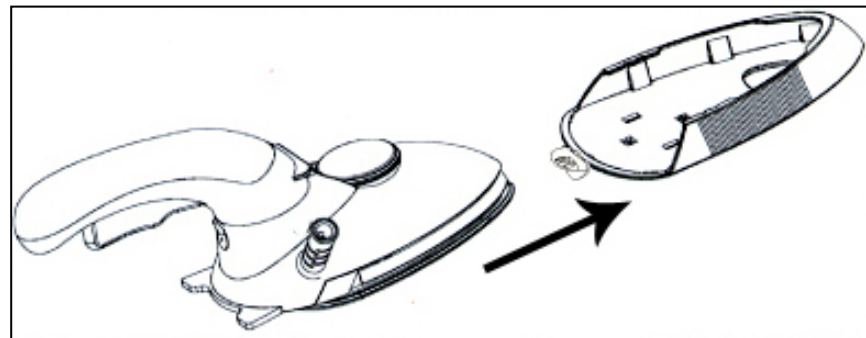
The handle on the garment steamer/iron can be changed in position by turning the handle 180° counter clockwise. (See illustration at right.) You can use the iron with the handle over it for regular ironing or with the handle behind it for steaming garments. (See illustrations below.)



**Using the Garment Brush**

**CAUTION! To prevent the risk of burns, make sure that the iron is not plugged in and that the iron sole plate is not hot before you slide on the garment brush to the iron.**

1. Disconnect the garment steamer/iron from the power supply.
2. If the appliance is hot, let it cool down first.
3. Slide the garment brush onto the soleplate of the garment steamer/iron and lock in place by turning the locking tab 180° counter-clockwise.
4. To remove the garment brush, disconnect garment steamer/iron from the power supply and let the unit cool down.
5. Turn the locking tab 180° clockwise and slide the garment brush off.



## OPERATING INSTRUCTIONS cont.

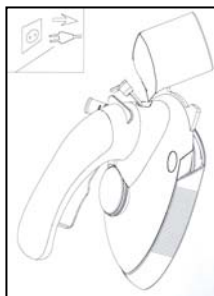
### Filling with Water

**WARNING!** Before filling the garment steamer/iron with water, be sure that the unit is not plugged into the electrical outlet. The garment steamer/iron may be filled with water while it is hot. TO PREVENT THE RISK OF BURNS, use caution when filling garment steamer/iron with water. Burns can occur from touching hot metal parts, hot water or steam.

**CAUTION:** Never fill the garment steamer/iron with fabric conditioner, starches or any other liquid, as these will damage the steam mechanism. Do not use contaminated water.

**NOTE:** Because of the soleplate design, ordinary tap water may be used with this appliance. However, in very hard water areas, we recommend using distilled or demineralized water.

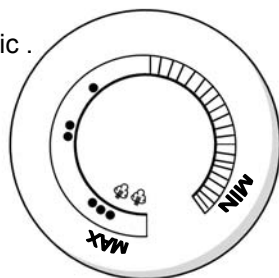
1. Disconnect the unit from the power supply.
2. Open the water inlet cover.
3. Using the measuring beaker provided and holding the garment steamer/iron at a slight angle, pour water slowly into the water filling inlet. See illustration. **DO NOT** overfill the tank.
4. Plug the cord into a household electrical outlet (see page 3 for voltage settings).
5. Turn the temperature control dial to the desired temperature setting and allow the iron to heat for approximately 2 minutes before ironing. Place iron on its heel (on a stable, protected surface) while the iron is warming to desired temperature. The pilot light will come on. When the iron has reached the desired temperature, the pilot light will go "Off".



### SETTING THE IRON TEMPERATURE

Set the temperature dial according to the type of fabric .

- Synthetics (low temperature)
- Silk, Wool (medium temperature)
- Cotton, Linen (high temperature)



**Please note:** Before starting to iron delicate fabrics, i temperature of the garment steamer/iron on a hem or an inside seam.

1. Set the temperature control dial to the desired temperature.
2. Stand the unit on its heel and connect it to the main power supply.
3. The pilot light will come on to indicate that the garment steamer/iron is heating up. The light will go "Off" when the set temperature has been reached and the garment steamer/iron is ready to use. The pilot light will go on and off as the thermostat is switching the heating element on and off to maintain the selected temperature.

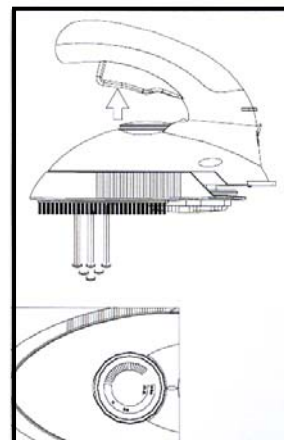
## OPERATING INSTRUCTIONS cont.

### BURST OF STEAM & CONTINUOUS STEAM (Horizontal & Vertical)

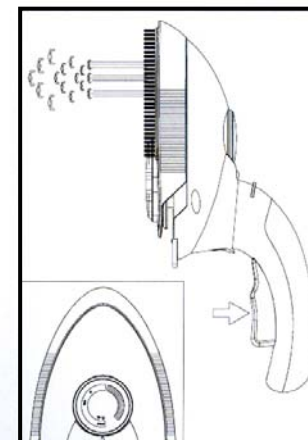
**Please note:** Before using the garment steamer/iron for the first time, it is important to purge the inside of the iron by allowing it to steam freely for a minute. This allows the removal of any impurities left by the manufacturing process.

**WARNING! DO NOT** aim iron at face, towards yourself, or anyone else while using or adjusting steam. Burns or serious injury may occur.

1. Make sure that the garment steamer/iron is unplugged from the power source.
2. Fill the unit with water following the instructions for filling on page 5.
3. Plug the power cord into the electrical outlet.
4. Set the temperature control dial within the steam area, i.e. "•••". (See page 5 for setting the temperature.)
5. The pilot light will go "On".
6. When the correct temperature has been reached, the pilot light will go "Off".
7. When the pilot light has gone off, press the steam trigger to produce a strong jet of steam. To prevent water leaking from the soleplate, do not keep the steam trigger depressed for more than 5 seconds. See illustrations below.
8. When using the continuous steam feature, depress the steam trigger and then release. Steam flow will begin shortly after releasing the steam trigger. To maintain a constant flow of steam, depress and release steam trigger again when steam flow has begun to drop.



Burst of Steam



Vertical Steam

**Please note:** For maximum steam, the temperature control dial should be set at "•••".

**IMPORTANT:** If the garment steamer/iron has not been set to the correct temperature setting for steam, water drops may leak from the soleplate.

## Free Manuals Download Website

<http://myh66.com>

<http://usermanuals.us>

<http://www.somanuals.com>

<http://www.4manuals.cc>

<http://www.manual-lib.com>

<http://www.404manual.com>

<http://www.luxmanual.com>

<http://aubethermostatmanual.com>

Golf course search by state

<http://golfingnear.com>

Email search by domain

<http://emailbydomain.com>

Auto manuals search

<http://auto.somanuals.com>

TV manuals search

<http://tv.somanuals.com>