

USB Extenders • Setup Guide

IMPORTANT:
Refer to www.extron.com for the complete user guide and installation instructions before connecting the product to the power source.

This guide provides basic instructions for an experienced technician to install and operate the Extron USB Extenders.

The USB Extender Series includes the USB Extender Tx/Rx, AAP Tx/Rx, and Decora® Tx/Rx. They are USB transmitter and receiver pairs that extend the usable distance of USB 1.0, 1.1, and 2.0 standards with data transfer rates up to 480 Mbp and data transmission up to 450 ft (135 m) with standard Category 5/5e/6/6e/7 cable.

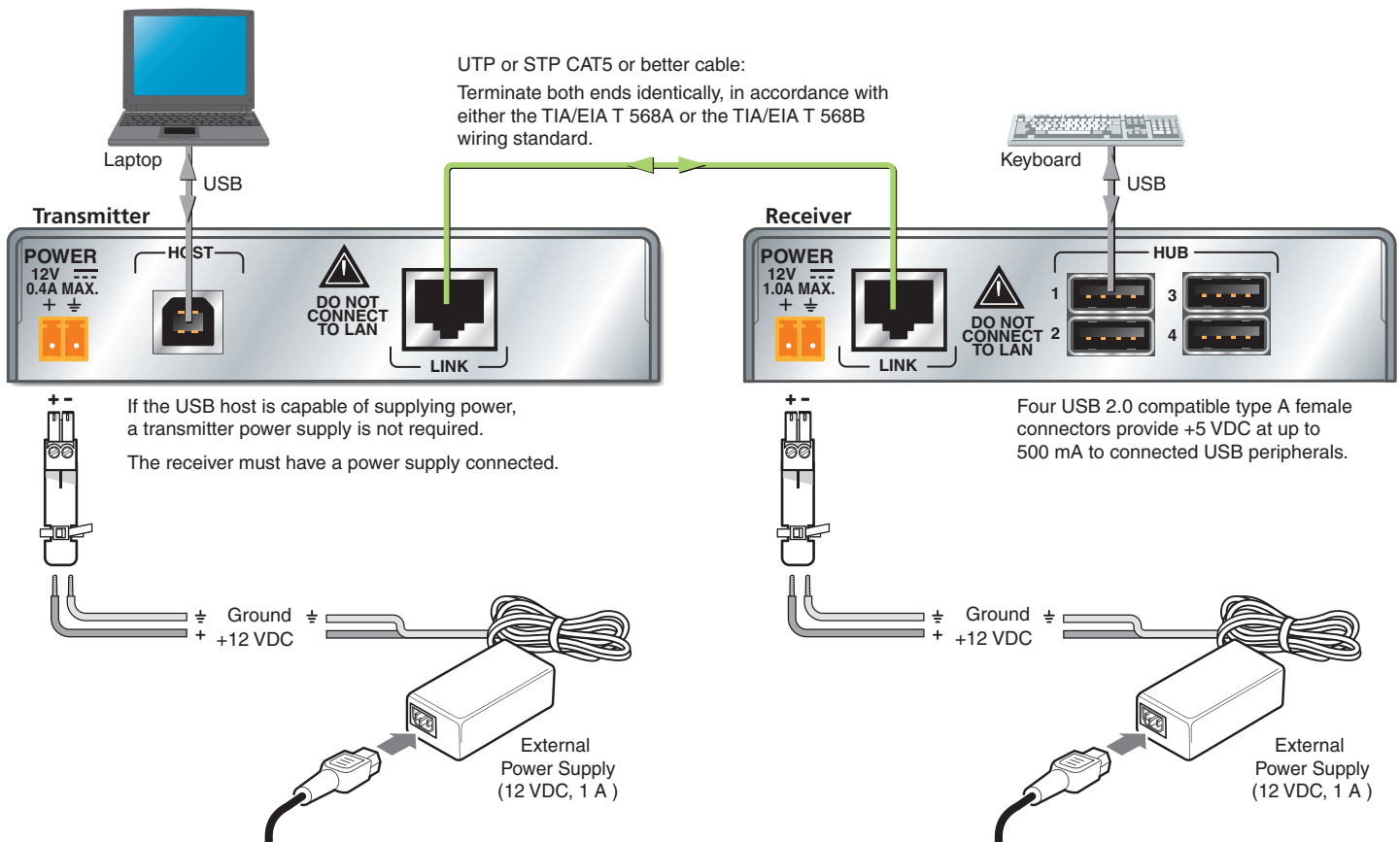
The rack mountable Tx/Rx, AAP mountable Tx/Rx, and Decora Tx/Rx models can be mixed.

Mount the USB Extenders

The USB Extender series includes transmitters and receivers in three form factors to provide a variety of mounting options including:

- USB Extender Tx/Rx in quarter rack width, 3 inch deep, 1 inch high metal enclosures
- USB Extender AAP Tx/Rx for double-space Architectural Adapter Plate openings
- USB Extender D (Decora) Tx/Rx for one-gang wall box or mud ring mounting

Choose the appropriate mounting location and install the USB Extender transmitter and receiver following instructions supplied with the mounting kit. If the rear panel connectors will be covered after mounting, make all connections prior to permanently mounting a USB Extender.



Run All Cables

Connect the transmitter and receiver as shown above.

NOTE: The host and hub connectors of the AAP and Decora models are on the front panel. The host connection on the AAP and Decora transmitter is a female mini USB Type B. Connection and operation are the same as the rack mount Tx/Rx models.

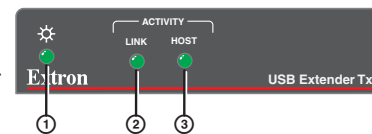
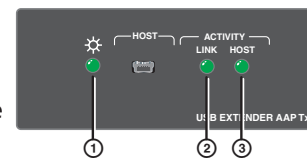
Apply Power to the USB Extenders

1. Connect the external power supply to the receiver. The power LED (①) on the receiver lights when power is applied.
2. Connect power to the transmitter depending upon the power source.
 - If using an external supply the power LED (①) of the transmitter lights when power is properly applied. The Link LED (②) on both the transmitter and receiver also lights to indicate proper link cable connection, or
 - If using a computer USB port to power the transmitter, the transmitter Power and Link LEDs do not light until after the laptop or PC is powered and booted up. The receiver Link LED lights once the transmitter is powered.

Connect the Host (Transmitter)

1. Connect a USB cable from the PC or laptop USB port to the transmitter Host port as shown on the previous page. The AAP and Decora transmitters have a female mini USB Type B connector on the front panel for this connection.
2. Reboot or power up the PC or laptop. The Host LED on the front panel of the transmitter (③) lights when the PC recognizes the port. If the PC is supplying transmitter power, the transmitter and receiver Link LEDs (②) both light.

Transmitters

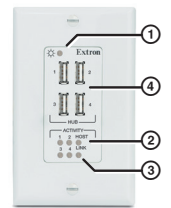
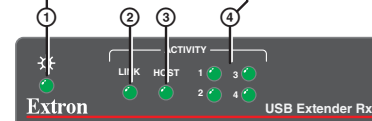
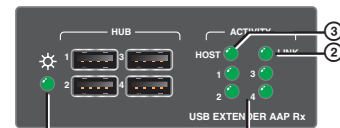


USB Extender Tx D

Connect the Hub (Receiver)

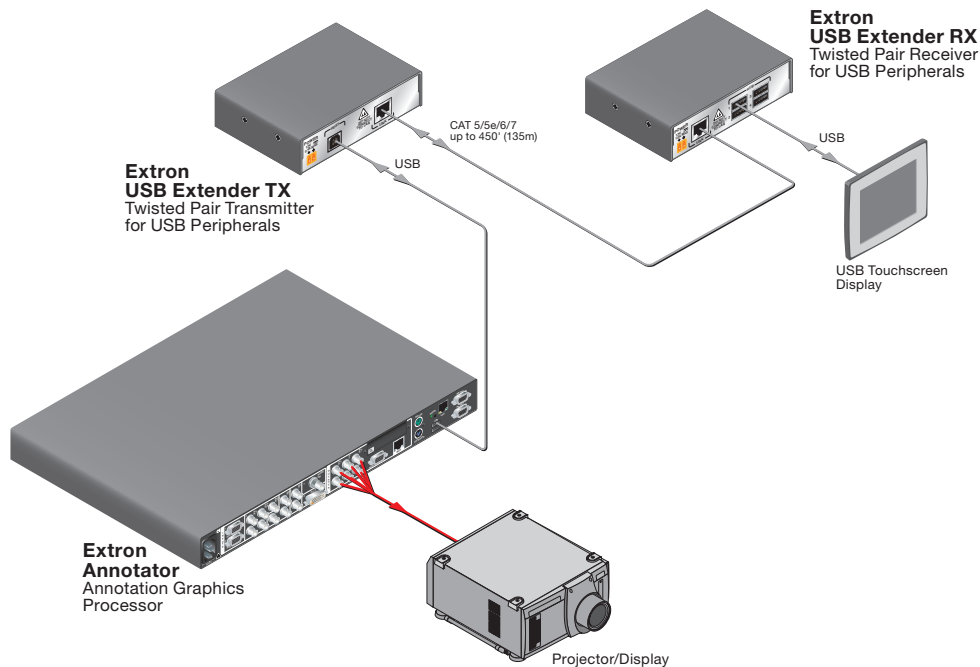
1. Connect up to four USB cables from peripheral devices to the receiver Hub ports. The order of connection does not matter. The Host LED on the receiver (③) lights as communications between the USB transmitter and host occur.
2. As each peripheral is connected, the LED for the appropriate hub port (④) lights when the PC has detected the device.

Receivers



USB Extender Rx D

NOTE: The USB Extender receivers can supply up to 0.5 A to each connected peripheral.



Extron USA - West Headquarters +800.633.9876 Inside USA/Canada Only +1.714.491.1500 +1.714.491.1517 FAX	Extron USA - East +800.633.9876 Inside USA/Canada Only +1.919.863.1794 +1.919.863.1797 FAX	Extron Europe +800.3987.6673 Inside Europe Only +31.33.453.4040 +31.33.453.4050 FAX	Extron Asia +800.7339.8766 Inside Asia Only +65.6383.4400 +65.6383.4664 FAX	Extron Japan +81.3.3511.7655 +81.3.3511.7656 FAX	Extron China +400.883.1568 Inside China Only +86.21.3760.1568 +86.21.3760.1566 FAX	Extron Middle East +971.4.2991800 +971.4.2991880 FAX
--	--	---	---	---	--	---

Free Manuals Download Website

<http://myh66.com>

<http://usermanuals.us>

<http://www.somanuals.com>

<http://www.4manuals.cc>

<http://www.manual-lib.com>

<http://www.404manual.com>

<http://www.luxmanual.com>

<http://aubethermostatmanual.com>

Golf course search by state

<http://golfingnear.com>

Email search by domain

<http://emailbydomain.com>

Auto manuals search

<http://auto.somanuals.com>

TV manuals search

<http://tv.somanuals.com>