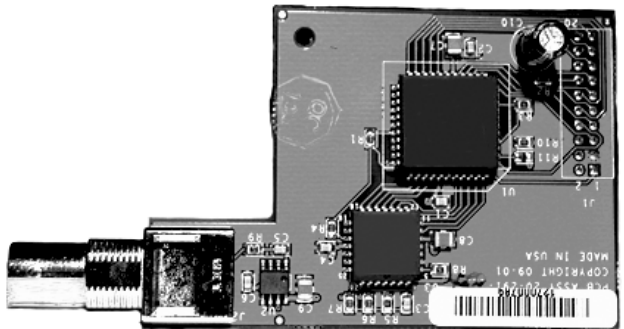


User's Guide



VSC 700/900 SDI Output Card 70-065-02 Upgrade Kit

68-735-01 Rev. A
Printed in the USA
09 03

Installation

Installing the SDI Output Card

The SDI output card may be installed in the VSC 700/900 by following the instructions and illustrations shown below.

Cover removal

1. Remove the power cable from the VSC and from the power source.

WARNING

Do not open the cover of the scan converter without unplugging the power cord.

2. If the VSC scan converter is rack mounted, detach the input and output cables from it and remove the unit from the rack. If the VSC is not rack mounted, you do not need to remove the input and output cables.
3. Remove 14 screws from the top and sides of the cover (figure 1) of the VSC 900. The VSC 700 has 12 top and side cover screws plus 9 rear panel screws and 2 jack screw nuts (RS-232/422 connector).

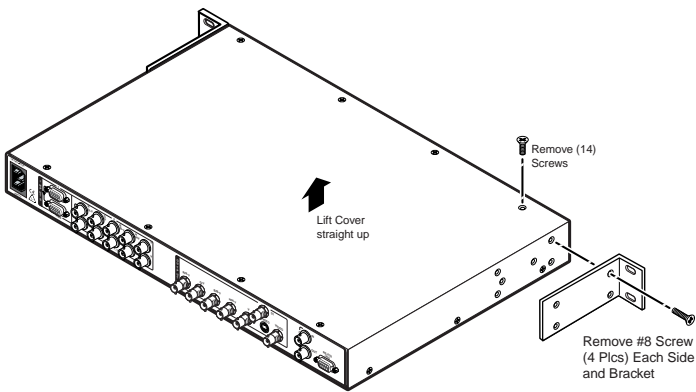


Figure 1 — Removing the VSC 900 cover

4. Remove the cover by slightly lifting each side alternately until the cover is free.

Reverse this procedure to reinstall the cover after the SDI connector card has been installed.

CAUTION

Do not touch any switches or other electronic components inside the VSC. Doing so could damage the scan converter. Electrostatic discharge (ESD) can damage IC chips even though you cannot feel it. You must be electrically grounded. A grounding wrist strap is recommended.

SDI Output Card installation

After following the instructions in “Cover removal” to remove the cover, do the following:

1. Locate the SDI card standoff located near the middle rear (VSC 900) or left rear (VSC 700) portion of the main circuit board (looking from above with the front panel nearest to you).

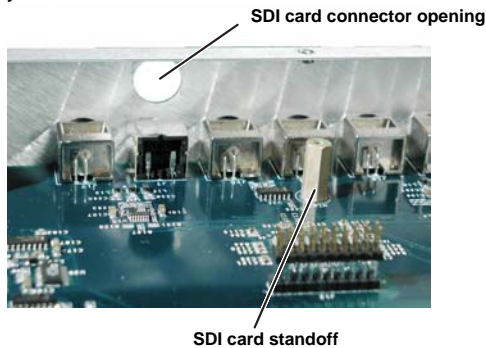


Figure 2 — SDI card standoff and connector opening

2. Remove the plastic cap covering the SDI connector opening from the rear panel of the VSC, and position the SDI card at an angle with the SDI connector protruding from the rear SDI connector opening.
3. The SDI card has a 20-pin socket on the underside which must align with the 20 pins on the main circuit board. Be sure to align the pins properly, in order to prevent bending the pins, before pressing the SDI card firmly in place against the standoff. The mounting hole on the SDI card should now be directly over the standoff.

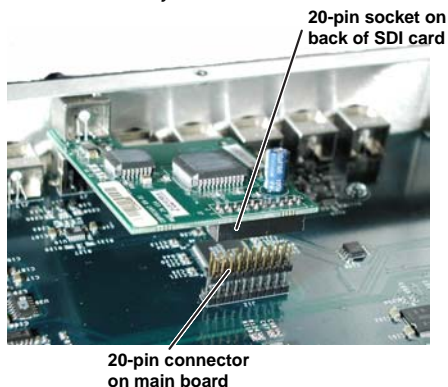


Figure 3 — SDI card situated above pins and standoff

4. Insert the card's installation screw through the SDI card's mounting hole, and gently tighten it into the standoff.

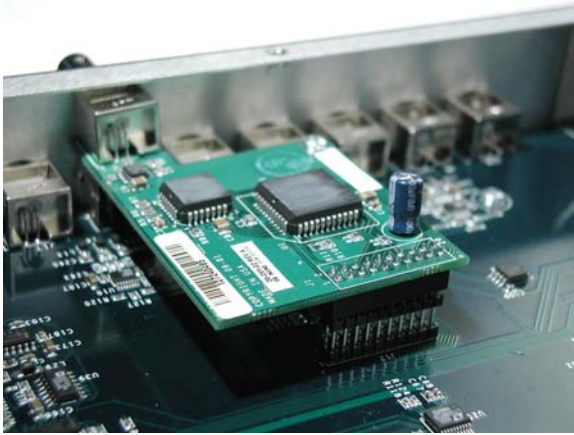


Figure 4 — SDI card mounted in place

5. Install the SDI connector's hex nut from the outside of the rear panel opening. Keep the SDI card from twisting as the nut is tightened.
6. Replace the top cover on the VSC, and fasten it with the screws which were removed in step 3 of the "Cover removal" section.
7. Rack/furniture mount the scan converter, and reconnect the AC power cord.

Part Numbers

Extron Part
SDI Output Card Kit

Part Number
70-065-02



Extron Electronics, USA
1230 South Lewis Street
Anaheim, CA 92805
USA
714.491.1500
Fax 714.491.1517

Extron Electronics, Europe
Beeldschermweg 6C
3821 AH Amersfoort
The Netherlands
+31.33.453.4040
Fax +31.33.453.4050

Extron Electronics, Asia
135 Joo Seng Road, #04-01
PM Industrial Building
Singapore 368363
+65.6383.4400
Fax +65.6383.4664

Extron Electronics, Japan
Daisan DMJ Building 6F
3-9-1 Kudan Minami
Chiyoda-ku, Tokyo 102-0074 Japan
+81.3.3511.7655
Fax +81.3.3511.7656

Free Manuals Download Website

<http://myh66.com>

<http://usermanuals.us>

<http://www.somanuals.com>

<http://www.4manuals.cc>

<http://www.manual-lib.com>

<http://www.404manual.com>

<http://www.luxmanual.com>

<http://aubethermostatmanual.com>

Golf course search by state

<http://golfingnear.com>

Email search by domain

<http://emailbydomain.com>

Auto manuals search

<http://auto.somanuals.com>

TV manuals search

<http://tv.somanuals.com>