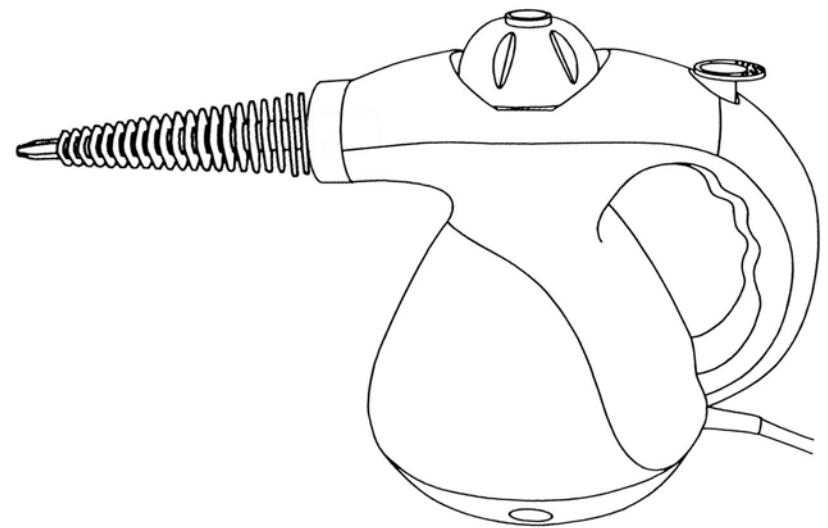


# FANTOM®

## HARD SURFACE STEAM CLEANER

### OWNER'S MANUAL

Model SC710H  
120V., 60Hz., 1000 Watts



#### **FANTOM**

94 Main Mill Street, Door 16.  
Plattsburgh, NY 12901  
Tel: 1 (800) 275-9251

# IMPORTANT SAFETY INSTRUCTIONS

When using an electrical appliance, basic precautions should be followed, including the following:

**Read all instructions carefully before using the Hand Held Super Steamer**



**Warning:** To reduce the risk of fire, electric shock, or injury:

1. Use the steam cleaner only for its intended use. Do not use outdoors.
2. To protect against a risk of electric shock. Do not immerse any part of the system in water or other liquids.
3. Never yank cord to disconnect from outlet; instead, grasp plug and pull to disconnect.
4. Do not allow cord to touch hot surfaces. Let the system cool completely before putting away or opening water tank (removing the safety cap). Wrap cord loosely around system when storing.
5. Always disconnect system from electrical outlet when filling with water or emptying and when not in use. Always turn the safety cap slowly when opening the water tank. This will allow any remaining steam to escape gradually.
6. Do not operate the system with a damaged cord or plug, or if the appliance or any other part of the system has been dropped or damaged. To avoid the risk of electric shock, do not disassemble or attempt to repair the steam cleaner. Return the system to **FANTOM** (see warranty for examination and repair). Incorrect re-assembly or repair can cause a risk of electrical shock or injury to persons when the steam cleaner is used.
7. Close supervision is necessary for any appliance being used by or near children. Do not leave the system unattended while connected.
8. Burns can occur from touching hot metal parts, hot water or steam. Use caution when turning the system upside down as there may be hot water in the unit. Never direct steam at any person. The steam is very hot and can cause burns.
9. Do not operate in the presence of explosive and/or flammable fumes.
10. Never use any chemicals or substance other than tap water in the machine. Use of chemicals may damage the machine. Use of chemicals will automatically void your warranty.

**To reduce the risk of fire, electric shock, or injury:**

- Do not leave the steam cleaner plugged in. Unplug the electrical cord when not in use and when refilling the water tank.
- Do not allow to be used as a toy. Close attention is necessary when used by or near children, pets or plants.
- Use only as described in this manual. Use only manufacturer's recommended accessories.
- Do not pull cord, use cord as a handle, close a door on cord, or pull cord around sharp edges or corners. Keep cord away from heated surfaces.
- Do not use extension cords or outlets with inadequate current carrying capacity.
- Do not unplug by pulling on cord. To unplug, grasp the plug, not the cord.
- Do not handle plug or steam cleaner with wet hands or operate without shoes.
- Do not put any objects into openings. Do not use with any opening blocked.
- Store your appliance indoors in a cool, dry area.
- Keep your work area well lit.
- **Never turn the appliance over or on its side when using steam. Never direct steam towards people, animal or plants.**
- Do not immerse the steam cleaner into water or other liquids. Always unplug the power cord from the electrical socket when filling the steam cleaner.
- **Do NOT add cleaning solutions, scented perfumes, oils or any other chemicals to the water used in this appliance as this may damage the unit or make it unsafe for use.** Use regular water or distilled/purified water if the tap water in your area is very hard.

**SAVE THESE INSTRUCTIONS  
FOR HOUSEHOLD USE ONLY**

Model  
SC710H



## 1 YEAR LIMITED WARRANTY

Your Steam Cleaner is warranted to be free from defects in material and workmanship for a period of one (1) year from the date of purchase when utilized for normal household use by the original purchaser only. The included Warranty Registration Card must be filled out and returned within 10 days of purchase. This is essential for your Warranty to be effective should any problem arise with this product.

Should any defect covered by the terms of the limited warranty be discovered within one year, **Fantom** will repair or replace any defective part provided the unit is returned by the original purchaser, freight prepaid, to:

US: **Fantom**, 94 Main Mill Street, Door, 16, Plattsburgh, N.Y. 12901

Proof of purchase date and \$14.95 for handling and return packing/shipping charges must be included.\*

The liability of under this warranty is limited solely to the cost of the replacement parts or the complete unit at our option. **LABOUR CHARGES ARE NOT INCLUDED.**

This warranty does not cover normal wear of parts and does not apply to any unit that has been tampered with or used for commercial purposes. This Limited Warranty does not cover damage caused by misuse, negligent handling, or damage due to faulty packaging or mishandling in transit (by any common carrier).

This warranty is extended to the original purchaser of the unit and excludes all other legal and/or conventional warranties. The responsibility of **Fantom**, if any, is limited to the specific obligations expressly assumed by it under the terms of the limited warranty. In no event is **Fantom** liable for incidental or consequential damages of any nature whatsoever. Some States/Provinces do not permit the exclusion or limitation of incidental or consequential damages, so the above may not apply to you.

This warranty gives you specific legal rights which vary from state to state or province to province.

\*Important: Carefully pack item to avoid damage in shipping. Be sure to attach tag to item before packing with your name, complete address and phone number with note giving purchase information, model number and what you believe is the problem with item. We recommend you insure the package (as damage in shipping is not covered by your warranty). Mark the outside of your package "ATTENTION CUSTOMER SERVICE". **We are constantly striving to improve our products, therefore the specifications contained herein are subject to change without notice.**



## OWNERSHIP REGISTRATION CARD

Please complete and return within ten (10) days of purchase. The registration will enable us to contact you in the event a product defect is discovered. By returning this card you acknowledge to have read and understood the instructions for use, and warnings set forth in the accompanying instructions.

RETURN TO: **Fantom**, 94 Main Mill Street, Door 16, Plattsburgh, N.Y. 12901

PURCHASER: .....

ADDRESS: .....

CITY: ..... STATE: .....

DATE OF PURCHASE: ..... MODEL:.....**SC710H**.....

## USAGE SUGGESTIONS FOR YOUR HARD SURFACE STEAM CLEANER



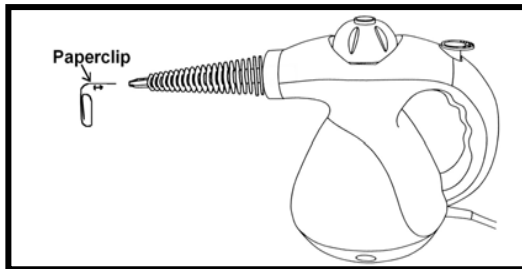
**CAUTION:** This appliance must be unplugged from the electrical outlet and allowed to cool down before all cleaning and maintenance tasks.

- Let the appliance cool down completely before cleaning or storing.
- Empty all water from the water tank after each use.
- Store in a dry, cool place.
- A periodic rinse of your steam cleaner will free it from deposits. This is recommended every 10-15 tankfills to free up any scale deposits. Fill the boiler with water and shake vigorously. Tilt the cleaner upside down to empty the boiler of water and any scale deposits.

### Cleaning the Nozzles:

Your steamer should not normally require cleaning, however, should you notice a marked decrease in steam output it may be necessary to remove mineral deposit build-up from the nozzle orifice. First ensure that there is water in the tank. If tank is empty, fill with water, (we recommend using purified or demineralized water), then re-start unit noting whether steam output is normal. If steam output is still low, follow these cleaning instructions:

1. Unplug steam cleaner from wall outlet.
2. Use a small diameter stiff metal wire such as a straightened metal paperclip and carefully insert the end of the wire into the nozzle orifice. See illustration below.
3. Move wire back and forth several times to remove any deposits.
4. Reconnect appliance to power outlet, switch on and note steam output.
5. If steam performance does not improve, repeat steps #1 through #4.



## ADDITIONAL IMPORTANT SAFEGUARDS

1. To avoid circuit overload, **do not** operate another appliance on the same socket (circuit) as the steam cleaner.
2. If an extension cord is absolutely necessary, an extension cord rated a minimum of 15 ampere, 14 gage cord should be used. Cords rated for less amperage may overheat. Care should be taken to arrange cord so that it cannot be pulled or tripped over.
3. **Do not** leave unattended when the system is connected to a power supply/electrical outlet.



**WARNING:** This appliance is equipped with a grounded-type 3-wire cord (3-prong plug). This plug will only fit into an electrical outlet made for a 3-prong plug. This is a safety feature. If the plug should fail to fit the outlet, contact an electrician to replace the outlet. Do not attempt to defeat the safety purpose of the grounding pin, part of the 3-prong plug.



**CAUTION:** Always drain condensed water from hose before use or if unit has been left idle for a period of time. To drain hose, direct nozzle into an appropriate container or sink and depress hand grip steam trigger. Once hose has been drained, normal use may be resumed. Never direct nozzle towards people, animals or plants.



**WARNING:** Your Steam Cleaner is designed to clean hard surfaces and upholstery that will withstand high heat. Do not use on soft plastics and cold glass. On surfaces that have been treated with wax or some no wax floors, the sheen may be removed by the heat and steam action. Do not use on unsealed wood. This could cause the wood grain to rise. It is therefore recommended to test an isolated area of the surface to be cleaned before proceeding.

### **IMPORTANT:**

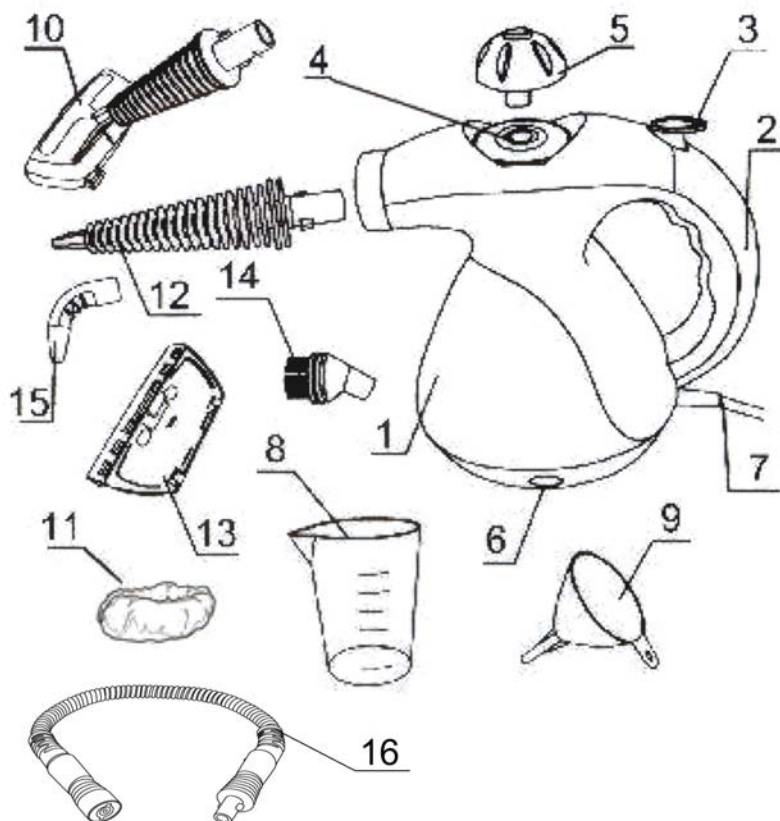
Do **NOT** add cleaning solutions, scented perfumes, oils or any other chemicals to the water used in this appliance. Use regular water or distilled/purified water if the tap water in your area is very hard.



**WARNING:** Danger of Scalding. Please use caution when using the steam cleaner. The steam emitted from openings is very hot.

# SAVE THESE INSTRUCTIONS FOR HOUSEHOLD USE ONLY

## GETTING TO KNOW YOUR HARD SURFACE STEAM CLEANER



### Unit Parts

1. Main Unit
2. Handle
3. Trigger Button
4. Filler Hole
5. Safety Cap
6. Indicator Light
7. Power Cord

### Accessories

8. Measuring Cup
9. Funnel
10. Steam diffuser
11. Cleaning Cloth
12. Concentrator Nozzle
13. Window Squeegee
14. Small Detail Brush
15. Angle Adapter
16. Hose

### Technical Specifications

Voltage: 120V., 60Hz.  
Power: 1000 Watts  
Water Capacity: 9 Oz.

Illustrations may differ from actual product

## USAGE SUGGESTIONS FOR YOUR HARD SURFACE STEAM CLEANER

### Upholstery

Use the steam diffuser with the cleaning cloth. Use fast, light strokes, avoid getting the fabric wet. Be patient with stubborn spots; work on a spot gently for no more than a minute at a time, then wait five minutes for the area to dry and repeat. Use circular movements or back-and-forth and side-to-side movements to get all sides of surface fibers. Finish with a brushing in one direction that will give the fabric a uniform appearance.

**CAUTION:** Always determine the color-fastness of any fabric - especially with reds or blues - by taking a clean, moist, warm towel and gently rubbing a small area as far down on the back or other out of the way place on the furniture as possible. If color comes off on the towel, you may need to have the piece dry cleaned.

### Window, Glass Surfaces and Mirrors

To use the window squeegee, work with the vapor jet down using the top to bottom movements. To do this without leaving streaks, use lateral movements from the top to the bottom of the surface.

**CAUTION:** When cleaning outside windows, always avoid any sudden changes in temperature to prevent breakage or cracks.

### Soap Scum

Soap scum dissolves almost immediately under a combination of heat and moisture. Rinse the surface with a small amount of water afterwards or go back over it once more with a clean terry cloth towel.

**Notes:** Soap scum sometimes will develop a hard surface from waterborne minerals. If this is the case, use the small detail brush first to break up this surface - or spray or wipe first with lemon, vinegar or seltzer soda water to soften the minerals.

Moving too slowly can dry out the soap scum and cause it to granulate on the surface. The surface will have a gritty feel. If this happens, apply vapor to the surface with the small detail brush again and re-clean.

### Bathroom Areas

To clean the bathtub or shower area, use the small detail brush for grout, shower door tracks, hard to get areas and heavily soiled areas. Allow plenty of time for the heat to penetrate the surface. This is especially helpful in the shower area if there is tile or grout.

To clean the toilet, use small detail brush. Use a terry cloth towel or paper towel to wipe up excess moisture and residue.

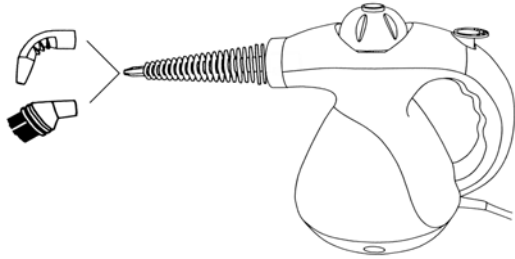
To clean the sink and faucets, use small detail brush.

## OPERATING INSTRUCTIONS

### Small Detail Brush / Angle Adapter

Both the angle adapter and the small detail brush can be used on the concentrator nozzle.

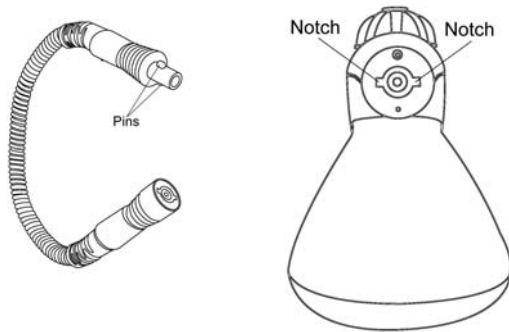
If using with the concentrator nozzle, push the attachment onto the end of the nozzle.



### Using the Steam Cleaner With the Hose

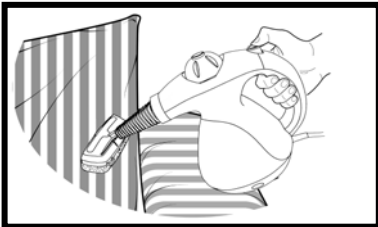
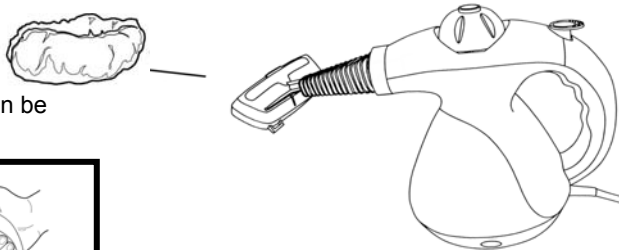
To attach the hose to the main unit, align the end of the hose that has the two pins with the notches in the nozzle of the unit. Push the hose into the nozzle until it stops against the appliance. Turn in a clockwise direction until it locks in place.

To attach the concentrator nozzle or the steam diffuser to the hose, follow the same instructions as above.



### Cleaning Cloth

The cleaning cloth is used with the steam diffuser. Just slip it over the steam diffuser. This can be used to clean upholstery.



## FEATURES

Your **Hand Held Steam Cleaner** utilizes pressurized steam to remove tough grease, dirt and grime. Steam is nature's purest and most powerful cleaner for safely cleaning all hard surfaces in your home without harsh chemicals, thus being perfectly ecological. The appliance has various attachments so that it can be used for many purposes such as:

1. Clean upholstery, sealed grout, bathroom/kitchen tile, stovetops.
2. Easy to clean difficult to reach areas with the angle concentrator/brush adapter such as faucets, etc.
3. Ideal for windows, mirrors, glass doors, etc.
4. Clean fabrics, window coverings, pillows, bedding etc.
5. Clean hard surface areas such as counters, sinks, shower door tracks, etc.

**NOTE: There may be a slight release of pressure when accessories are removed. This is normal due to pressure build up inside of accessories during use.**

To refill, unplug, unit from electrical outlet, depress trigger until all remaining pressure/steam has been allowed to escape from the tank, and allow to cool for 15 minutes. Carefully open the safety cap. Once cool, refill, replace safety cap and re-plug into electrical outlet. Resume work.

## OPERATING INSTRUCTIONS

### How To Assemble & Use

**CAUTION:** Always ensure the unit is **"UNPLUGGED"** from the wall receptacle prior to filling or re-filling the water tank. Failure to follow these steps will cause the water tank to overflow.

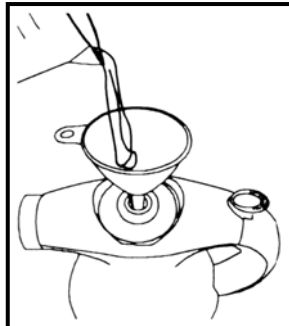
- Step 1: Before filling the steam cleaner, make sure that the unit is **NOT** plugged in.
- Step 2: Turn Safety Cap counter clockwise until removed.
- Step 3: Place funnel in the tank and add water. **Do not overflow.** Replace Safety Cap by turning clockwise - press down firmly to tighten. Heating time is approximately 5-6 minutes. Filling the boiler with hot water will shorten heat up time.
- Step 4: Plug the unit into a standard 120 volt wall receptacle. The power light will light up.
- Step 5: Allow approximately 5-6 minutes for water vapor to reach its working temperature and pressure.
- Step 6: At the start, some water will come out from the nozzle. This is normal.

**WARNING:** Disconnect steam cleaner from wall outlet before refilling. It is time to refill your steam cleaner when there is no more steam coming out of the nozzle. Because the water tank is pressurized, use caution when opening to refill. Always let unit cool for 5 minutes before opening the safety cap. Depress the trigger button while you unscrew the safety cap counterclockwise.

**CAUTION:** When refilling the appliance while it is still hot, the first drops of water might bubble up. **Use caution when opening the Safety Cap.**

### Refilling With Water

- Step 1: Disconnect electrical power cord from wall outlet.
- Step 2: Press trigger button until all pressure has been released.
- Step 3: Wait for approximately 15 minutes before carefully unscrewing the safety cap.
- Step 4: Turn slowly a half turn and wait for the hissing noise created by residual steam to stop.
- Step 5: Unscrew the safety cap completely and allow to cool.
- Step 6: Slowly pour water using the measuring cup and the funnel into the boiler. **DO NOT OVERFILL. Always leave approximately an inch between the top of the unit and the water level.**
- Step 7: Screw safety cap back on the appliance and plug appliance back into wall outlet. Steam will start to be produced as before.



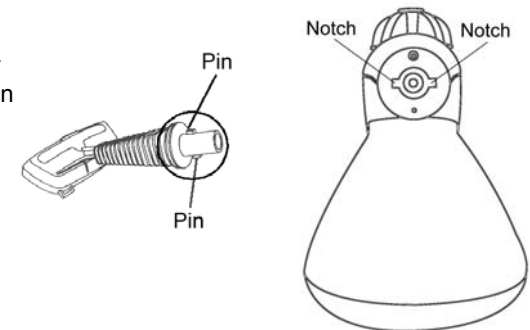
**WARNING:** This appliance is under pressure. After every use, press trigger button until all pressure has been released before removing safety cap.

## OPERATING INSTRUCTIONS

### Attachments

#### Concentrator Nozzle / Steam Diffuser

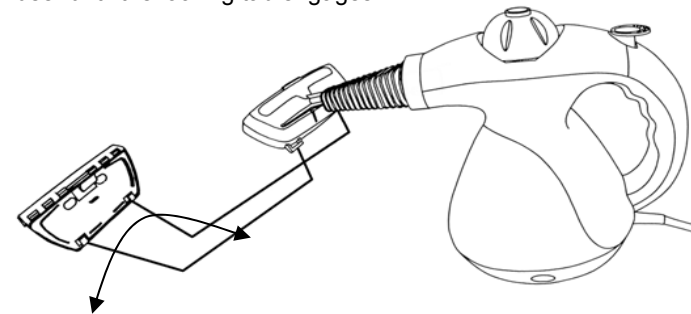
To attach the concentrator nozzle or the steam diffuser to the nozzle, align the end of the concentrator nozzle / steam diffuser that has the two pins with the notches in the nozzle of the unit. Push the attachment into the nozzle until it stops against the appliance. Turn in a clockwise direction until it locks in place. (See illustration.) The attachment is now locked into position.



#### Window Squeegee

**CAUTION:** When cleaning outside windows, always avoid any sudden changes in temperature to prevent breakage or cracks.

To attach the window squeegee to the steam diffuser, place the two hinges at the back of the window squeegee (see illustration) into the two open tabs that are at the back of the steam diffuser. Swing the window squeegee up against the bottom of the steam diffuser until the locking tab engages.



To remove the window squeegee from the steam diffuser, just push your thumb against the locking tab on the window squeegee.



## Free Manuals Download Website

<http://myh66.com>

<http://usermanuals.us>

<http://www.somanuals.com>

<http://www.4manuals.cc>

<http://www.manual-lib.com>

<http://www.404manual.com>

<http://www.luxmanual.com>

<http://aubethermostatmanual.com>

Golf course search by state

<http://golfingnear.com>

Email search by domain

<http://emailbydomain.com>

Auto manuals search

<http://auto.somanuals.com>

TV manuals search

<http://tv.somanuals.com>