

**Fisher-Price®**

**H8268  
Instructions**

# Playful Puppy Gym

Please keep this instruction sheet for future reference, as it contains important information.

Musical panda requires three alkaline (LR44) button cell batteries (included).

Adult assembly is required.

Tool required for battery replacement:  
Phillips screwdriver  
(not included).



**1**

**Overhead  
Gym**



**2**

**Tummy-Time  
play**



[www.fisher-price.com](http://www.fisher-price.com)

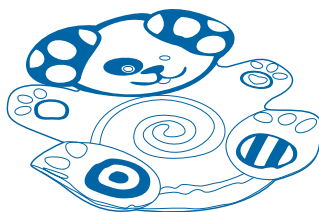
## Parts

### WARNING

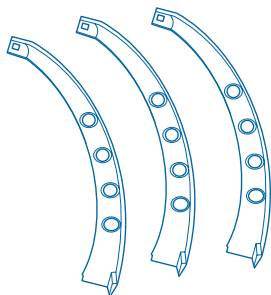
To prevent entanglement injury,  
never place the gym in a crib or playpen.  
Never add strings, ties or other products to the gym.



**Hub**



**Mat**



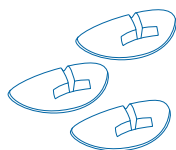
**3 Arches**



**Musical Panda**



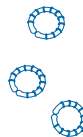
**Butterfly**



**3 Bases**



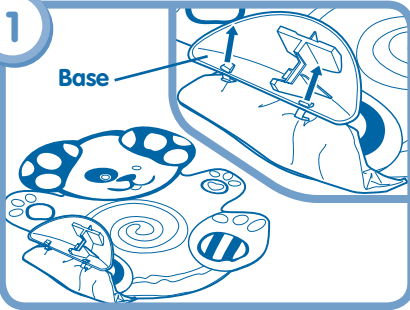
**Birdie**



**3 Plastic Links**

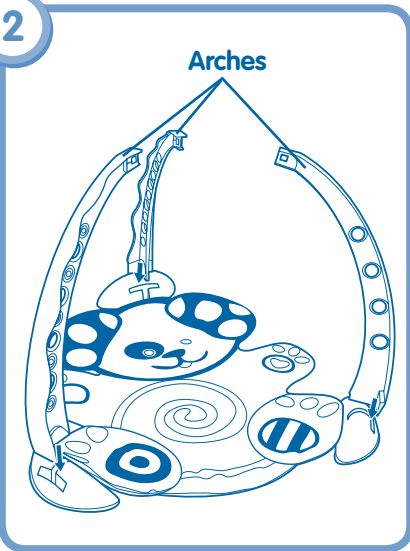
# Assembly

1



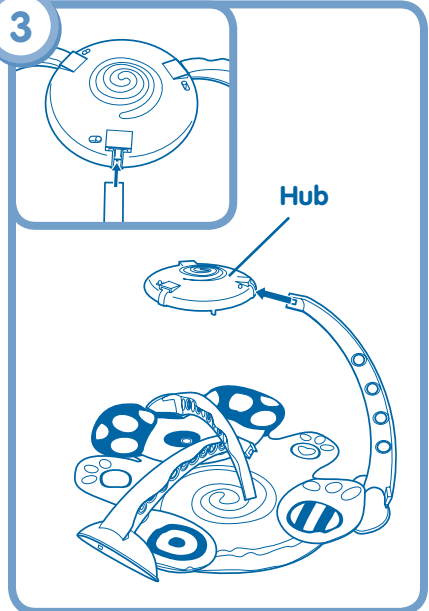
- Fit two straps on the mat into the slots in the base. Make sure the tab at the end of each strap forms a "T" under the base.
- Repeat this procedure to attach the mat to the other two bases.

2



- **"Snap"** the three arches into the bases, as shown.

3



- **"Snap"** the end of each arch into the hub, as shown.

# Busy Activities and Fun Sounds!

1

## Overhead Gym



- Attach the toys and links to the loops under the hub or the openings on the arches.
- Press the button on the musical panda for fun music.

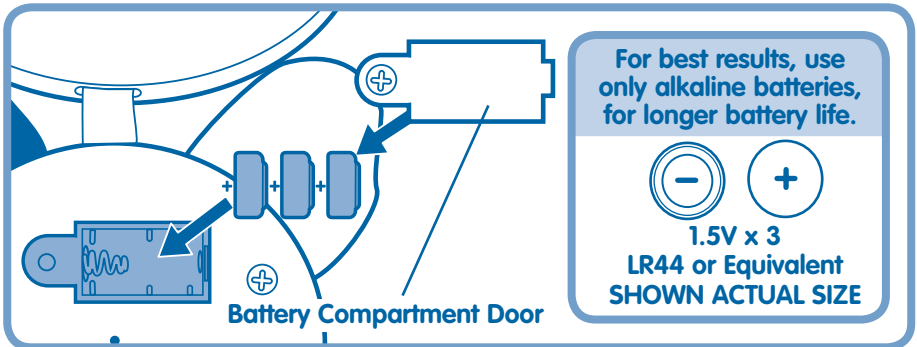
2

## Tummy-Time play



- Attach some toys lower on the arches so they are in front of baby.
- Press the button on the musical panda for fun music.

## Battery Replacement



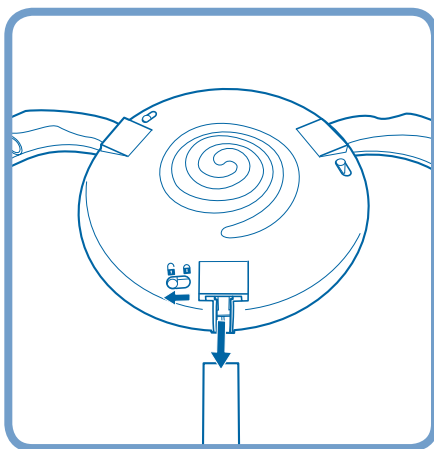
- Locate the battery compartment on musical panda.
- Loosen the screw in the battery compartment door with a Phillips screwdriver. Remove the battery compartment door.
- Insert three, new, button cell (LR44) **alkaline** batteries, as indicated inside the battery compartment.
- Replace the battery compartment door and tighten the screw with a Phillips screwdriver. Do not over-tighten.
- When sounds become faint or stop, it's time for an adult to change the batteries!


## Battery Safety Information

In exceptional circumstances, batteries may leak fluids that can cause a chemical burn injury or ruin your product. To avoid battery leakage:

- Do not mix old and new batteries or batteries of different types: alkaline, standard (carbon-zinc) or rechargeable (nickel-cadmium).
- Insert batteries as indicated inside the battery compartment.
- Remove batteries during long periods of non-use. Always remove exhausted batteries from the product. Dispose of batteries safely. Do not dispose of batteries in a fire. The batteries may explode or leak.
- Never short-circuit the battery terminals.
- Use only batteries of the same or equivalent type, as recommended.
- Do not charge non-rechargeable batteries.
- Remove rechargeable batteries from the product before charging.
- If removable, rechargeable batteries are used, they are only to be charged under adult supervision.

## Storage



- Slide the switch on top of the hub to the unlock position  and pull to remove an arch.
- Repeat this procedure to remove the other two arches.
- Unfasten the mat straps from the bases and store the arches and hub flat on the mat.

## Care

### Mat

- Unfasten the mat straps from the bases.
- Machine wash on gentle in cold water. Line dry the mat. Do not use bleach.

### Arches, toys and hub

- Wipe with a clean cloth dampened with a mild soap and water solution. Do not immerse this toy.
- This toy has no consumer serviceable parts. Do not take this toy apart.

## Recycle Information (U.S.A. ONLY)



If your product contains replaceable button cell batteries, please remove and recycle the battery(ies). If the batteries in your product are not replaceable, please recycle your product.

- Visit your nearest recycling center. For the location of the nearest recycling center, visit us online at [www.service.mattel.com](http://www.service.mattel.com).
- If a recycling center is not available in your area, contact us for a pre-paid mailing label. Visit us online at [www.service.mattel.com](http://www.service.mattel.com) or call us toll-free, **1-800-432-5437**.

## Consumer Information

Visit us on line at [www.service.fisher-price.com](http://www.service.fisher-price.com).

Call Fisher-Price® Consumer Relations, toll-free at 1-800-432-5437, 8 AM - 6 PM EST Monday through Friday. Hearing-impaired consumers using TTY/TDD equipment, please call 1-800-382-7470. Write to us at: Fisher-Price® Consumer Relations, 636 Girard Avenue, East Aurora, New York 14052.

## FCC Note (United States Only)

**Note:** This equipment has been tested and found to comply with the limits for a Class B digital device, pursuant to Part 15 of the FCC Rules. These limits are designed to provide reasonable protection against harmful interference in a residential installation. This equipment generates, uses and can radiate radio frequency energy and, if not installed and used in accordance with the instructions, may cause harmful interference to radio communications. However, there is no guarantee that interference will not occur in a particular installation. If this equipment does cause harmful interference to radio or television reception, which can be determined by turning the equipment off and on, the user is encouraged to try to correct the interference by one or more of the following measures:

- Reorient or relocate the receiving antenna.
- Increase the separation between the equipment and receiver.
- Consult the dealer or an experienced radio/TV technician for help.

Note: Changes or modifications not expressly approved by the manufacturer responsible for compliance could void the user's authority to operate the equipment.

### For countries outside the United States:

**CANADA: Questions? 1-800-432-5437.** Mattel Canada Inc., 6155 Fremont Blvd., Mississauga, Ontario L5R 3W2; [www.service.mattel.com](http://www.service.mattel.com).

**GREAT BRITAIN:** Mattel UK Ltd, Vanwall Business Park, Maidenhead SL6 4UB. Helpline: 01628 500303; [www.service.mattel.com/uk](http://www.service.mattel.com/uk)

**AUSTRALIA:** Mattel Australia Pty. Ltd., 658 Church Street, Locked Bag #870, Richmond, Victoria 3121 Australia. Consumer Advisory Service 1300 135 312.

**NEW ZEALAND:** 16-18 William Pickering Drive, Albany 1331, Auckland.

**ASIA:** Mattel East Asia Ltd, Room T106, South Tower, World Finance Centre, Harbour City, Tsimshatsui, HK, China.

## Free Manuals Download Website

<http://myh66.com>

<http://usermanuals.us>

<http://www.somanuals.com>

<http://www.4manuals.cc>

<http://www.manual-lib.com>

<http://www.404manual.com>

<http://www.luxmanual.com>

<http://aubethermostatmanual.com>

Golf course search by state

<http://golfingnear.com>

Email search by domain

<http://emailbydomain.com>

Auto manuals search

<http://auto.somanuals.com>

TV manuals search

<http://tv.somanuals.com>