

Software for

FinePix **EX3.1**

EX Version 3.1 for Windows® and Macintosh™

Software Quick Start Guide

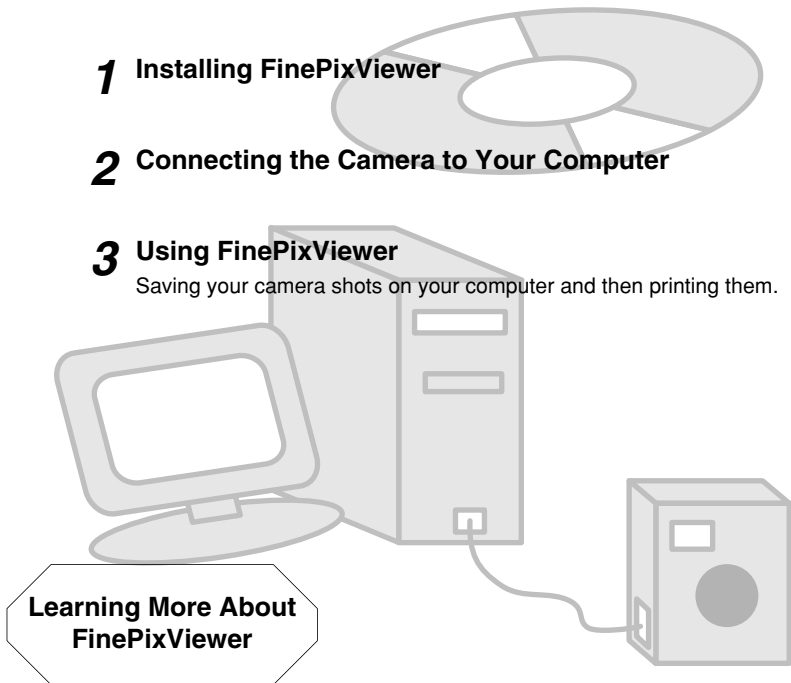
Thank you for purchasing this FUJIFILM product.

1 Installing FinePixViewer

2 Connecting the Camera to Your Computer

3 Using FinePixViewer

Saving your camera shots on your computer and then printing them.



Launching FinePixViewer/Using Batch Format Conversion/Creating FinePix CD Albums/Attaching Images to E-mails/Videoconferencing

- Refer to the web site given below for other information on this product.
<http://home.fujifilm.com/products/digital/index.html>

IMPORTANT

Be sure to read this page before using the Software.

NOTICE

BEFORE OPENING THE PACKAGE OF CD-ROM PROVIDED BY FUJI PHOTO FILM CO., LTD., PLEASE READ THIS END USER LICENSE AGREEMENT CAREFULLY. ONLY IF YOU DO AGREE TO THIS AGREEMENT, YOU WILL BE ABLE TO USE THE SOFTWARE RECORDED ON THE CD-ROM. BY OPENING THE PACKAGE, YOU ACCEPT AND AGREE TO BE BOUND BY THIS AGREEMENT.

End User License Agreement

This End User License Agreement ("Agreement") is an agreement between Fuji Photo Film Co., Ltd. ("FUJIFILM") and you, which sets forth the terms and conditions of the license granted for you to use the software provided by FUJIFILM.

The CD-ROM contains third party software. In case a separate agreement is provided by a third party supplier for its software, the provisions of such separate agreement shall apply to the use of such third party software, prevailing over those of this Agreement.

1. Definitions.

- (a) "Media" means the CD-ROM titled "Software for FinePix EX" which is provided to you together with this Agreement.
- (b) "Software" means the software which is recorded on Media.
- (c) "Documentation" means the operation manuals of Software and other related written materials which are provided to you together with Media.
- (d) "Product" means Media (including Software) and Documentation collectively.

2. Use of Software.

FUJIFILM grants to you a nontransferable, nonexclusive license:

- (a) to install one copy of Software onto one computer in binary machine executable form;
- (b) to use Software on the computer onto which Software is installed; and
- (c) to make one backup copy of Software.

3. Restrictions.

- 3.1 You shall not distribute, rent, lease or otherwise transfer all or any part of Software, Media or Documentation to any third party without FUJIFILM's prior written consent. You also shall not sublicense, assign or otherwise transfer all or any part of the rights granted to you by FUJIFILM under this Agreement without FUJIFILM's prior written consent.
- 3.2 Except as expressly granted by FUJIFILM hereunder, you shall not copy or reproduce all or any part of Software or Documentation.
- 3.3 You shall not modify, adapt or translate Software or Documentation. You also shall not alter or remove copyright and other proprietary notices that appear on or in Software or Documentation.
- 3.4 You shall not, or shall not have any third party, reverse-engineer, decompile, or disassemble Software.

4. Ownership.

All copyrights and other proprietary rights to Software and Documentation are owned and retained by FUJIFILM or the third party suppliers as indicated on or in Software or Documentation. Nothing contained herein shall be construed, expressly or implicitly, as transferring or granting any right, license, or title to you other than those explicitly granted under this Agreement.

5. Limited Warranty.

FUJIFILM warrants to you that Media is free from any defect in material and workmanship under normal use for ninety (90) days from the date of your receipt of Media. Should Media not meet the foregoing warranty, FUJIFILM shall replace such defective Media with other Media bearing no defect. FUJIFILM's entire liability and your sole and exclusive remedy with regard to any defect in Media shall be expressly limited to such FUJIFILM's replacement of Media as provided herein.

6. DISCLAIMER OF WARRANTY.

EXCEPT AS PROVIDED IN SECTION 5 HEREIN, FUJIFILM PROVIDES PRODUCT "AS IS" AND WITHOUT WARRANTIES OF ANY KIND, EXPRESS OR IMPLIED. FUJIFILM SHALL MAKE NO WARRANTY, EXPRESS, IMPLIED OR STATUTORY, AS TO ANY OTHER MATTERS, INCLUDING, BUT NOT LIMITED TO NON-INFRINGEMENT OF ANY COPYRIGHT, PATENT, TRADE SECRET, OR ANY OTHER PROPRIETARY RIGHTS OF ANY THIRD PARTY, MERCHANTABILITY, OR FITNESS FOR ANY PARTICULAR PURPOSE.

7. LIMITATION OF LIABILITY.

IN NO EVENT SHALL FUJIFILM HAVE ANY LIABILITY FOR ANY GENERAL, SPECIAL, DIRECT, INDIRECT, CONSEQUENTIAL, INCIDENTAL, OR OTHER DAMAGES (INCLUDING DAMAGES FOR LOSS OF PROFITS OR LOST SAVINGS) INCURRED FROM THE USE OF OR INABILITY TO USE PRODUCT EVEN IF FUJIFILM HAS BEEN ADVISED OF THE POSSIBILITY OF SUCH DAMAGES.

8. No export.

You acknowledge that neither Software nor any part thereof, will be transferred, or exported to any country or used in any manner in violation of any export control laws and regulations to which Software is subject.

9. Termination.

In case you breach any of the terms and conditions hereof, FUJIFILM may immediately terminate this Agreement without any notice.

10. Term.

This Agreement is effective until the date when you cease to use Software, unless earlier terminated in accordance with Section 9 hereof.

11. Obligation upon termination.

Upon termination or expiration of this Agreement, you shall, at your own responsibility and expense, delete or destroy immediately all Software (including its copies), Media and Documentation.

12. Governing Law.

This Agreement shall be governed by and construed in accordance with laws of Japan.



Do not attempt to play the CD-ROM enclosed with this product on an audio CD player. Doing so could damage your hearing or could damage your speakers or headphones.

Please note that this Guide is written on the assumption that you already have a basic understanding of how to use your PC (personal computer), Windows and Macintosh.

For basic information on using your PC, Windows and Macintosh, refer to the respective manuals supplied with your PC.

- Microsoft and Windows are trademarks of the Microsoft Corporation of the U.S. registered in the U.S. and other countries.
Windows is an abbreviated term referring to the Microsoft Windows Operating System.
- Macintosh, iMac and Mac OS are registered trademarks of Apple Computer, Inc.
- QuickTime and the QuickTime logo are trademarks used under license. The QuickTime logo is registered in the U.S. and other countries.
- Adobe Acrobat® Reader™, ActiveShare™ and PhotoDeluxe are trademarks of Adobe Systems Incorporated of the U.S.
- SmartMedia™ is a trademark of Toshiba Corporation.
- VideoImpression™ is a trademark of ArcSoft, Inc.
- All other company or product names are trademarks or registered trademarks of the respective companies.

How to Read This Manual

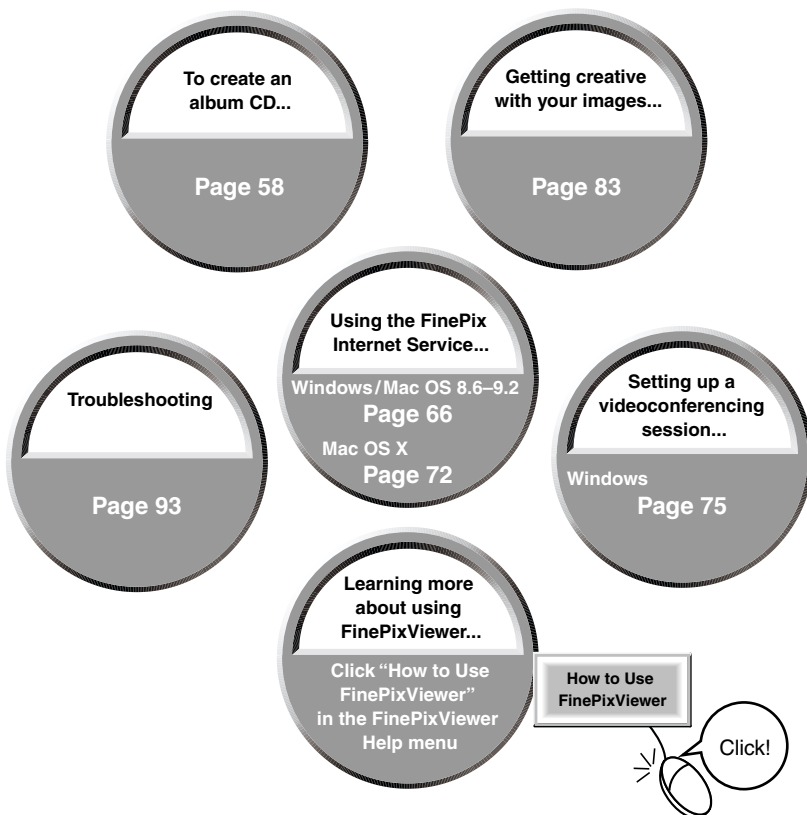
1 Finishing the Installation

- Windowspage 11
- Mac OS 8.6 to 9.2page 27
- Mac OS Xpage 35

2 Connecting the Camera to Your Computer

- Windowspage 17
 - Mac OS 8.6 to 9.2page 32
 - Mac OS Xpage 39
- See also the "Connection" section of your camera's Owner's Manual.

3 Using FinePixViewer



Contents

| | |
|---|----|
| IMPORTANT | 2 |
| How to Read This Manual | 4 |
| Contents | 5 |
| About the Online Help..... | 6 |
| Introduction | 7 |
| Glossary of Terms | 7 |
| Important Information and Helpful Hints for Internet Users | 9 |
| The Software Components | 10 |
| Installation on a Windows PC | 11 |
| 1 Pre-installation Checklist | 12 |
| 2 Load the CD-ROM into your PC | 13 |
| 3 From FinePixViewer installation to restart | 15 |
| 4 Use this procedure the first time you connect the camera to your PC (DSC connection) | 17 |
| 5 Disconnecting the Camera (DSC Connection) | 20 |
| 6 Use this procedure the first time you connect the camera to your PC (PC Camera connection) | 22 |
| 7 Disconnecting the Camera (PC Camera Connection) | 24 |
| 8 Acrobat Reader, PhotoDeluxe and ActiveShare installation..... | 25 |
| Installing the Software on Mac OS 8.6 to 9.2 | 27 |
| 1 Pre-installation Checklist | 28 |
| 2 Check the system software settings | 29 |
| 3 From FinePixViewer installation to restart | 29 |
| 4 Connecting the Camera as a Card Reader | 32 |
| 5 Disconnecting the Camera | 33 |
| 6 Acrobat Reader installation..... | 34 |
| Installing the Software on Mac OS X | 35 |
| 1 Pre-installation Checklist | 36 |
| 2 From FinePixViewer installation to restart | 37 |
| 3 Connecting the Camera as a Card Reader | 39 |
| 4 Disconnecting the Camera | 40 |
| Using FinePixViewer | 41 |
| Saving Images on Your Computer..... | 41 |
| Printing..... | 44 |
| Deleting Images..... | 45 |
| Using the FinePixViewer Advanced Features | 47 |
| Launching FinePixViewer | 48 |
| FinePixViewer Components | 50 |
| Switching between Windows | 51 |
| Selecting Folders..... | 52 |
| Copying Images..... | 54 |
| Select a Thumbnail | 54 |
| Batch Format Conversion | 56 |
| Making a FinePix CD Album | 58 |

Introduction

Glossary of Terms

This section provides explanations of the minimum basic operations you must be familiar with in order to use your personal computer, along with an introduction to some other operations that will help you to use your computer more efficiently. For more detailed information on using your computer, refer to the user manuals supplied with the computer.

■ Administrator

This refers to the account owned by the computer's administrator. Setting your user privileges to "Administrator" allows you to use all the functions available in Windows 2000 Professional, Windows XP.

■ Application software

Software used for a specific purpose, such as word processing, spreadsheets or image editing.

■ Browser

Software used for viewing web pages on the Internet. Examples include Internet Explorer and Netscape Navigator.

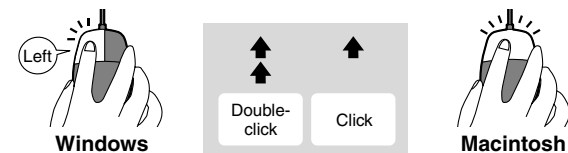
■ Click, Double-click

Click: Pressing the left mouse button (Windows) or the mouse button (Macintosh) once and then releasing it.

☞ Used to select files, folders, windows, buttons, etc.

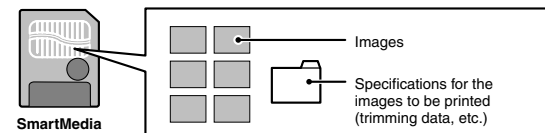
Double-click: Clicking the left mouse button (Windows) or the mouse button (Macintosh) twice.

☞ Used to open files, folders, etc.



■ DPOF

A format used for recording information on SmartMedia that specifies which images are to be printed.



| | |
|---|-----|
| Attaching Images to E-mail Messages in FinePixViewer | 62 |
| Using the FinePix Internet Service | 66 |
| User Registration | 67 |
| Using the Services | 69 |
| Obtaining the Latest Version of FinePixViewer | 70 |
| Using the FinePix Internet Service (Mac OS X) | 72 |
| User Registration | 72 |
| Using the Services | 74 |
| Videoconferencing with PictureHello | 75 |
| Using the Address Book | 81 |
| Mastering FinePixViewer | |
| – Using Online Help – | 82 |
| Lights, Camera, Action! Using VideoImpression | 83 |
| Main Functions | 83 |
| Making Your Own Movies | 84 |
| Capturing Live Images (Windows) | 86 |
| Capturing Live Images (Mac OS 8.6 to 9.2) | 88 |
| Uninstalling the Software | 91 |
| Uninstalling Mass Storage Driver and PC Camera Driver | 92 |
| Uninstalling Exif Launcher, FinePixViewer and DP Editor | 92 |
| Uninstalling FinePixViewer | 92 |
| When you have a problem | 93 |
| Troubleshooting (Windows) | 94 |
| Troubleshooting Connection Problems | 95 |
| Troubleshooting Videoconferencing Problems | 98 |
| Troubleshooting Other Problems | 101 |
| Troubleshooting (Macintosh) | 103 |
| Troubleshooting Connection and Image Viewing Problems | 103 |
| Troubleshooting Internet Problems | 105 |
| Troubleshooting Other Problems | 106 |

Symbols Used in This Guide

The symbols listed below are used throughout this guide.

☞ Indicates a camera operation must be performed. Refer to the Owner's Manual for your camera.

NOTE Indicates important precautions to follow when using the software.

* Indicates important information.

☞ Indicates notes or additional information.

TIP Indicates useful tips.

About the Online Help

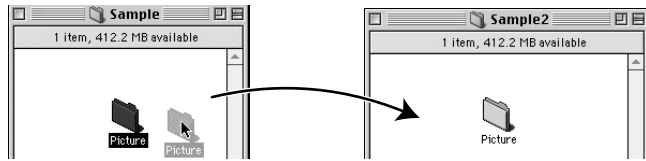
For more information on FinePixViewer functions not fully explained in this manual, refer to "How to Use FinePixViewer" in the Help menu.

■ To read "How to Use FinePixViewer"...

You must install Adobe Systems' Acrobat Reader. See P.25 (Windows) or P.34 (Macintosh) for information on installing Acrobat Reader.

■ Drag & drop

An operation used to move, copy or store files and folders.



Drag

1. Position the mouse pointer over the file or folder icon you want to drag.
2. With the mouse button held down, move the mouse to another location.

Drop

When you reach the desired location, release the mouse button.

■ Drive

A peripheral device used by a personal computer to store and access files.

A disk drive into which removable media can be loaded is referred to as a removable disk drive.

Typical examples include CD-ROM drives and floppy disk drives. Digital cameras are also handled as disk drives.



Drive icons in Windows



Drive icons for Macintosh

■ Driver

Software used by a personal computer to operate a peripheral device.

■ File

Data stored on a SmartMedia or on the hard disk of a personal computer. Files are the units used by personal computers and cameras to manage data. For instance, one image is handled as one file, as is one music track.

■ Folder

A location in which related files are stored. Other folders can also be stored inside a folder.

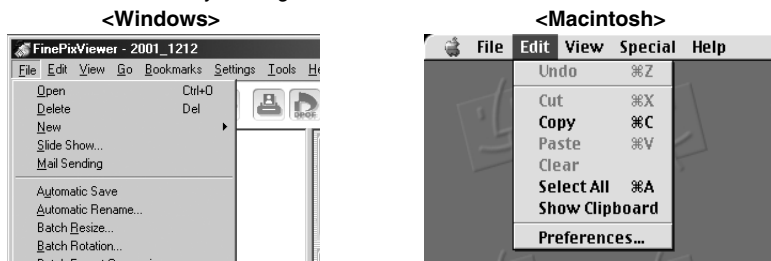
■ Install

The process of setting up software on a personal computer.

■ Menu

A list of functions displayed at the edge of the screen. Typical examples include the "File" and "Edit" menus.

When you click on a menu name, a list of the available functions appears and you can then execute a function by moving the mouse to the desired function name.



■ Password

This is a secret code designed to prevent improper use of your user ID. Type your password when you log in to the server.

The first time you log in during the FinePix Internet Service user registration, type in your choice of password using letters or numbers. Ensure that you are not observed as you type in your password.

■ Server

A computer used on a computer network, such as the Internet, that provides services and data to connected network users.

■ SSL (Secure Sockets Layer)

A communications format with enhanced security functions. Using SSL allows you to exchange data over the Internet with greater safety.

■ Thumbnail

A reduced image created when images are displayed as a list. In FinePixViewer, double-clicking on a thumbnail image displays the original image.

■ Uninstall

The process of removing software from your PC and restoring your PC's settings to their original status before the software was installed.

■ User ID

A name by which users are identified. Type your user ID when you log in to the server. The first time you log in during the FinePix Internet Service user registration, type in your choice of user ID using letters or numbers.

Important Information and Helpful Hints for Internet Users

■ Charges

The charges for using the Internet include the following:

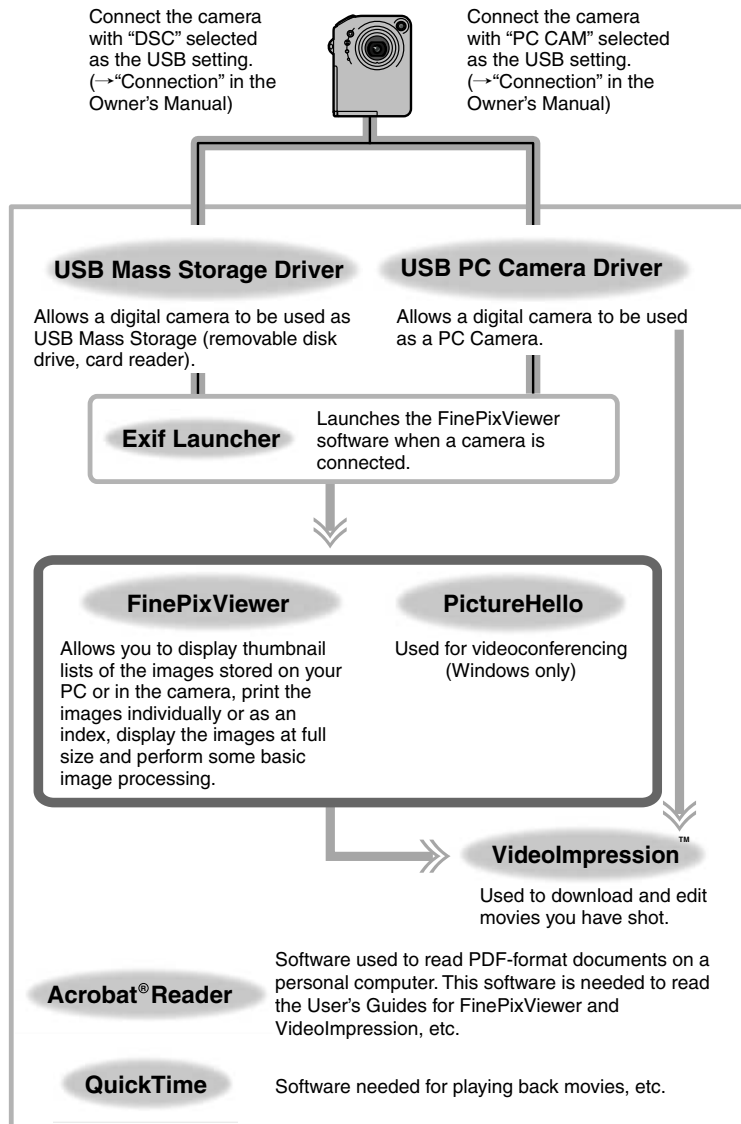
| | |
|---------------------------|--|
| Call charges | The fees paid for using the phone line; paid to your telephone company. |
| Connection charges | The fees paid for server connection and data storage (e-mail and web pages); paid to your Internet service provider (ISP). |

- * If the charges vary depending on the call or connection time, you should use your PC's automatic disconnect function to avoid wasted connection time.
- * The FUJIFILM FinePix Internet Service includes both free and fee-based services.
- * If you use online shopping or other services, you will be invoiced for the product or service in addition to the call and connection charges.

■ Viruses

A virus infecting your PC can result in the loss of important data or the sending of unwanted e-mail messages to the people stored in your address book. Do not open downloaded files or files received as e-mail attachments unless you are certain of their content.

The Software Components



* Note that the software configuration differs slightly depending on your operating system.

Installation on a Windows PC

This chapter describes how to install and set up the software on a Windows PC.

1 Check this before you start the installation.

Ensure that your PC hardware and software meet the system requirements for the software to be installed.

2 Load the "Software for FinePix" CD-ROM into your PC.

3 Install FinePixViewer and restart your PC.

Click "Install FinePixViewer" and install the software as directed by the on-screen instructions. Then restart your PC.

4 Connect the camera in DSC mode.

- Check that the USB Mass Storage Driver is operating normally.
- The first time you connect, specify the required settings.

5 Disconnect the camera in DSC mode.

6 Connect the camera in PC CAMERA mode.

- Check that the USB PC Camera Driver is operating normally.
- The first time you connect, specify the required settings.

7 Disconnect the camera in PC CAMERA mode.

8 Install Acrobat Reader, PhotoDeluxe and ActiveShare.

You must install this software as you need it to read the electronic manual.

When you have installed all the software...

Once you have finished installing all the software components, remove the CD-ROM. You will need this CD-ROM if you ever have to re-install any of the software, so keep it in a safe place away from dampness and out of direct sunlight.

1 Pre-installation Checklist

Hardware and software requirements

To run this software, you must have the hardware and software described below. Check your system before you begin the installation.

| | |
|-----------------------|---|
| Compatible PCs | IBM PC/AT or compatible *1 |
| Operating System | Windows 98 (including the Second Edition) Windows Millennium Edition (Windows Me) Windows 2000 Professional*2 Windows XP Home Edition*2 Windows XP Professional*2 |
| CPU | 200 MHz Pentium or better recommended (800 MHz Pentium III or better recommended for Windows XP) |
| RAM | 64MB minimum (128 MB minimum for Windows XP) |
| Hard disk space | Amount required for installation: 140 MB minimum Amount required for operation: 300 MB minimum (When FinePix CD Album Maker is used: 2 GB or better) |
| Display | 800 × 600 pixels or better, 16-bit color or better |
| Internet connection*3 | <ul style="list-style-type: none">To use the FinePix Internet Service or mail attachment function An Internet connection and e-mail transmission softwareTo use videoconferencing An analog modem or ISDN connectionConnection speed: 56k or better recommended |
| Sound functions*4 | Speakers, microphone and sound card |

*1 Models with a USB interface as a standard feature and one of the above operating systems preinstalled.

*2 When you install the software, log in using a system administrator account (e.g. "Administrator").

*3 Required to use the FinePix Internet Service and videoconferencing. The software can still be installed even if you do not have an Internet connection.

*4 Sound functions are required for videoconferencing and audio input/output in VideoImpression.

NOTE

- Connect the camera directly to the computer using the special USB cable. The software may not operate correctly if you use an extension cable or connect the camera via a USB hub.
- If your computer has more than one USB port, the camera can be connected to either port.
- Push the USB connector fully into the socket to ensure that it is securely connected. The software may not operate correctly if the connection is faulty.
- Additional USB interface board is not guaranteed.
- Windows 95 cannot be used.
- Operation is not guaranteed on home-built computers or on computers running updated operating system software.
- If your Internet connection is via a router or via a LAN (connecting machines on the LAN to the Internet), you cannot use videoconferencing.
- If you are using Windows XP and you tick the "Protect my computer and network by limiting or preventing access to this computer from the Internet" checkbox in the Internet connection firewall settings, videoconferencing cannot be used. See "Troubleshooting" (→ P.100) for information on setting up firewalls.
- When you reinstall or remove FinePixViewer, the Internet menu and your user ID and password for the FinePix Internet Service are deleted from your computer. Click the [Register now] button, enter your registered user ID and password and download the menu again.

2 Load the CD-ROM into your PC

Do not connect the camera to your PC until the software installation is completed.

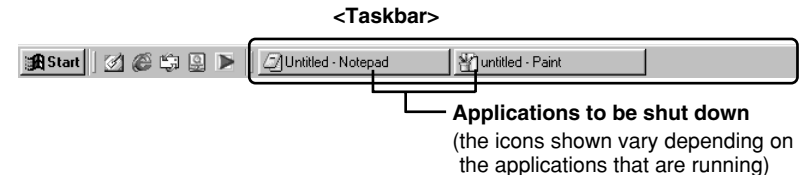
1. Switch on your PC and start up Windows.

* If you have already switched on your PC, restart your PC at this point.

NOTE

Users of Windows 2000 or Windows XP should log in using a system administrator account (e.g. "Administrator").

2. Quit all other active applications until no applications are shown in the taskbar.



① Click the right mouse button on the application icon in the taskbar.

② Click "Close" in the menu that appears to quit the application.

* For more information, refer to the instructions provided with your PC and applications (antivirus software, etc.).

NOTE

If a "----.dll file not found." message appears during installation, there is another application running in the background. Forcibly shut down the application. Refer to your Windows manuals for information on how to forcibly shut down an application.

3. Load the enclosed CD-ROM into the CD-ROM drive. The installer starts up automatically.

Launching the Installer Manually

1. Double-click the "My Computer" icon.

* Windows XP users should click "My Computer" in the "Start" menu.

2. Right-click "PHOTODELUXE" (CD-ROM drive) in the "My Computer" window and select "Open".

3. Double-click "SETUP" or "SETUP.exe" in the CD-ROM window.



* The way file names are displayed differs as described below depending on your computer settings.

- File extensions (3-letter suffixes indicating the file type) may be shown or hidden. (e.g. Setup.exe or Setup)
- Text may be shown normally or all in uppercase (e.g. Setup or SETUP).

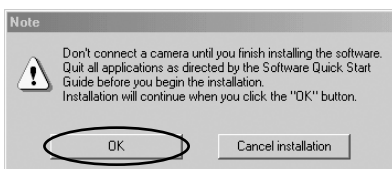
4. Pre-installation checking begins. If any warning messages appear, follow the instructions given on the screen.



* The "Add New Hardware Wizard" may be hidden behind the "Note" message. Check the taskbar, move the message window and then click the [Cancel] button.



5. A confirmation message appears asking whether you want to continue with the installation. Click the [OK] button.



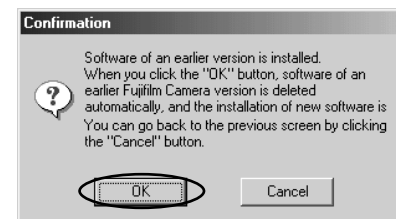
3 From FinePixViewer installation to restart

1. The Setup screen appears. Click the [Install FinePixViewer] button.

* For more information on what is installed, click the [Explanation] button.



2. The software version is checked. If the window shown at right appears, click the [OK] button to uninstall the software.



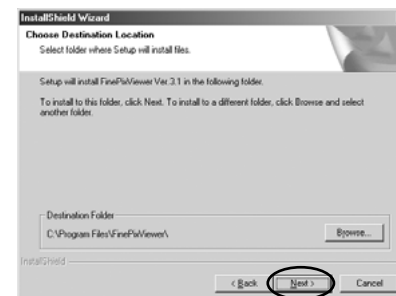
3. The USB drivers are installed.

4. Install FinePixViewer.

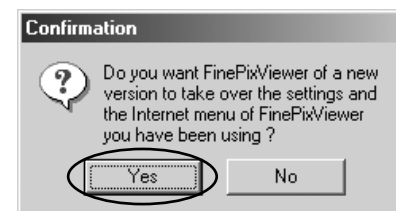
① FinePixViewer installation begins and notes and warnings are displayed. When you have confirmed these, click the [Next >] button.



② Check the installation destination folder and then click the [Next >] button.



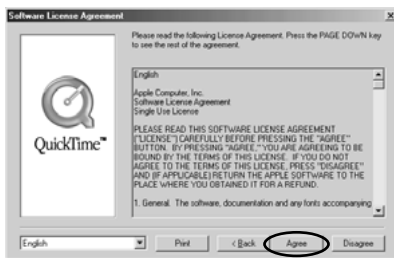
③ The screen shown at right may appear. To continue with the settings, click the [Yes] button.



3

5. Install QuickTime as directed by the on-screen instructions.

* If you have already installed QuickTime version 5.0.2 or later, this installation is not performed.



Click [Agree] button in the "Software License Agreement" window.



If the "Connection speed" window appears, set the correct speed for your environment of connection and then click the [Next] button.

* If you do not know your connection speed, simply click the [Next] button.

6. Install NetMeeting as directed by the on-screen instructions.

* If NetMeeting 3.01 or later is already installed on your PC, this installation is not performed.

7. Install VideoImpression as directed by the on-screen instructions.

8. Install Windows Media Player as directed by the on-screen instructions and then restart your PC.

* If the latest version of the software is already installed on your PC, this installation is not performed. When next screen appears, click the [Restart] button.



When you click the [Finish] button, your PC is restarted.



In this window, tick the "I have read the Privacy Statement" checkbox and then click the [Next >] button.



9. After you restart your PC, the "FinePixViewer Help" page appears in the web browser window. Check the details before closing the window and proceeding with the installation.

4 Use this procedure the first time you connect the camera to your PC (DSC connection)

Actually connect the camera in DSC mode and check that USB Mass Storage Driver was installed correctly.

The Windows CD-ROM may also be required in some cases. Have the CD-ROM ready beforehand. If no Windows CD-ROM was supplied with your PC, consult the Owner's Manual for your PC or contact your PC's manufacturer.

TIP

It is strongly recommended that you use the AC power adapter. Loss of power during data communications will prevent successful data transfer.

1. Load a SmartMedia containing photographed images into the camera.

See "Connection" in the camera Owner's Manual.

NOTE

- Do not format the SmartMedia on a PC as this may make the card unusable for taking pictures.
- Use only SmartMedia containing shots taken on a FUJIFILM digital camera.

2. Select "DSC" as the USB mode setting on the camera and then switch the camera off.

3. Use the special USB cable to connect the camera to your PC.

From this point onwards the procedure differs depending on your operating system.

To check your type of PC...

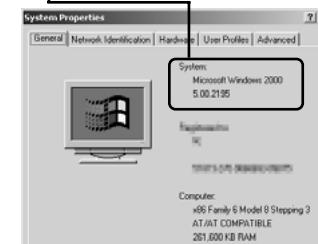
- ① Right-click "My Computer" and then click "Properties".
- ② Your operating system type is shown in the "System" box.

<Example: Windows 2000 Professional>

System:
Microsoft Windows 2000
5.00.2195

<Example: Windows Me>

System:
Microsoft Windows Me
4.90.3000



4. Switch the camera back on.

NOTE

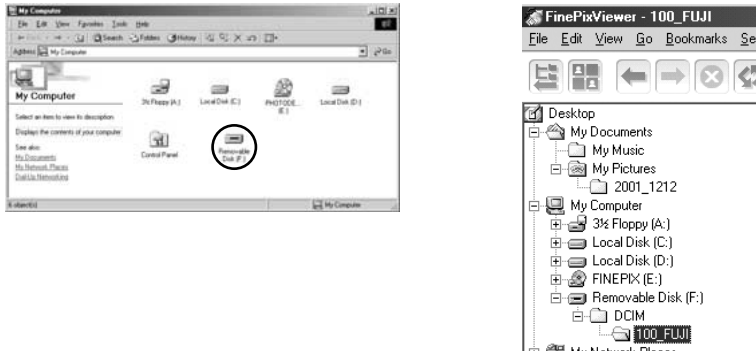
- Always use the correct procedure when disconnecting the camera from your PC or switching the camera off.
- Do not perform any of the following when the camera is connected to a PC as this could damage the SmartMedia or corrupt the data on the SmartMedia: Disconnect the USB cable or AC power adapter / Touch the camera controls (power switch, control buttons, lens cover or slot cover)

Windows 98/98 SE/Me/2000

- 1 The "New Hardware Found" wizard appears. The wizard will close when the settings are completed. No action is required.
 - * This step is not required for subsequent connections.




- 2 FinePixViewer automatically starts up and the images on the SmartMedia are displayed. A new removable disk icon also appears in the "My Computer" window.



TIP

The Exif Launcher installed with the FinePixViewer automatically launches FinePixViewer when you connect the camera to your PC. However, FinePixViewer does not start up if there are no still images on the SmartMedia.

NOTE

If FinePixViewer does not start up and  does not appear, the software was not installed correctly. Disconnect the camera, restart your PC and re-install the software. If this does not resolve the problem, refer to the Troubleshooting section.

Proceed to "Disconnecting the Camera (DSC Connection)" on page 20.

Windows XP

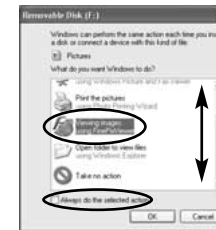
- 1 The "Found New Hardware" help message appears in the bottom-right corner of your screen. This message will close when the settings are completed. No action is required.
 - * This step is not required for subsequent connections.



- 2 Specify the settings shown below in the "AutoPlay" dialog box.

When FinePixViewer is included in the list of actions to perform

Select "Viewing images using FinePixViewer" and then select the "Always do the selected action" checkbox. (This checkbox may not be shown in some cases.) Click the [OK] button to launch FinePixViewer.



When FinePixViewer is not included in the list of actions to perform

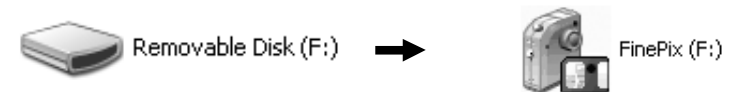
Select "Take no action" and then select the "Always do the selected action" checkbox. (This checkbox may not be shown in some cases.) Click the [OK] button and launch FinePixViewer manually.



- 3 A new removable disk icon appears in the "My Computer" window.

TIP

As of the next time you connect the camera, the removable disk drive icon and name change to the "FinePix" icon and name.



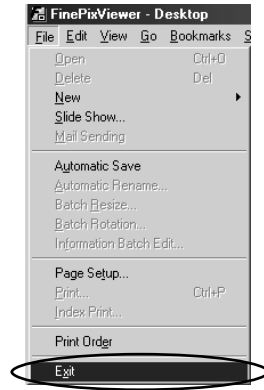
Proceed to "Disconnecting the Camera (DSC Connection)" on page 20.

5 Disconnecting the Camera (DSC Connection)

1. Exit any applications that are using the camera (FinePixViewer, etc.).

NOTE

Failure to carry out this step could cause your computer to malfunction.



See "Connection" in the camera Owner's Manual.

2. Check that the camera and PC are not communicating. If communication is in progress, wait until it ends.

3. Prepare to switch the camera off. The procedure for this differs depending on the operating system you are using.

Windows 98/98 SE

No PC operations are required.

Windows Me

- 1 In the "My Computer" window, right-click the "Removable disk" icon and then click "Eject".



- 2 Click the Eject icon in the taskbar. When the "Safe To Remove Hardware" dialog box appears, click the [OK] button.



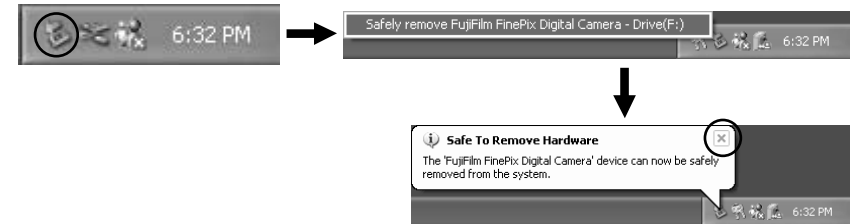
Windows 2000

- Click the Eject icon in the taskbar. When the "Safe To Remove Hardware" dialog box appears, click the [OK] button.



Windows XP

- Click the eject icon in the taskbar and click the Close button in the "Safe To Remove Hardware" help message.



4. Switch the camera off.

5. Unplug the special USB cable from the camera.

See "Connection" in the camera Owner's Manual.

NOTE

- Always close all the files in the camera (removable disk) folder and confirm that the camera and PC are no longer communicating.
- In Windows 2000 Professional, Windows XP or Windows Me, your PC may malfunction if you disconnect the USB cable without first using the "Eject hardware" procedure.
- When the "Copying" message disappears from your PC screen, wait a few moments before disconnecting the USB cable or removing the SmartMedia.

If a large amount of data is being copied, camera access continues for a short time after the message displayed on the PC has gone off.

* If your camera does not have a PC Camera function, proceed to “**B** Acrobat Reader, PhotoDeluxe and ActiveShare installation” (→ P.25).

6 Use this procedure the first time you connect the camera to your PC (PC Camera connection)

Actually connect the camera in PC Camera mode and check that USB PC Camera Driver was installed correctly.

The Windows CD-ROM may also be required in some cases. Have the CD-ROM ready beforehand. If no Windows CD-ROM was supplied with your PC, consult the Owner's Manual for your PC or contact your PC's manufacturer.

TIP

It is strongly recommended that you use the AC power adapter. Loss of power during data communications will prevent successful data transfer.

1. Select “PC CAM” as the USB mode setting on the camera and then switch the camera off.

See “Connection” in the camera Owner's Manual.

2. Use the special USB cable to connect the camera to your PC.

3. Switch the camera back on.

NOTE

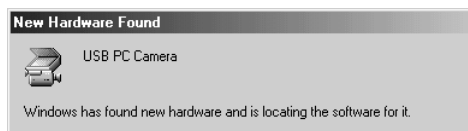
- Always use the correct procedure when disconnecting the camera from your PC or switching the camera off.
- Do not perform any of the following when the camera is connected to a PC :
Disconnect the USB cable or AC power adapter / Touch the camera controls (power switch, control buttons, lens cover or slot cover)

4. Check PC operation. The installation procedure differs depending on the operating system running on your PC.

* This step is not required for subsequent connections.

Windows 98/98 SE/Me

The “New Hardware Found” wizard appears. The wizard will close when the settings are completed. No action is required.



Windows 2000

If the “Digital Signature Not Found” dialog box appears, click the [Yes] button.



Windows XP

The USB PC Camera Driver is installed automatically. When the following screen appears, click the [Continue] button.

5. FinePixViewer starts up automatically and the live image is displayed.

NOTE

If the live image does not appear, refer to “Troubleshooting” (→ P.94)

TIP

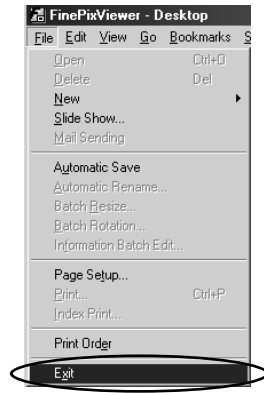
The Exif Launcher installed with the FinePixViewer automatically launches FinePixViewer when you connect the camera to your PC.

7 Disconnecting the Camera (PC Camera Connection)

1. Exit any applications that are using the camera (FinePixViewer, etc.).

NOTE

Failure to carry out this step could cause your computer to malfunction.



See "Connection" in the camera Owner's Manual.

2. Check that the camera and PC are not communicating. If communication is in progress, wait until it ends.
3. Switch the camera off.
4. Unplug the special USB cable from the camera.

8 Acrobat Reader, PhotoDeluxe and ActiveShare installation

You must install Adobe Systems' Acrobat Reader software to read the FinePixViewer User's Guide (PDF). If you already have the latest version installed, this step is not required.

1. Open the "My Computer" window, right-click the CD-ROM icon and select "Open" to view the contents of the CD-ROM.



2. Double-click "SETUP" or "SETUP.exe".
3. In the installer window, click the [Install Acrobat Reader] button.



4. Proceed with the installation as directed by the on-screen instructions.
5. Use the same procedure to install "PhotoDeluxe" and "ActiveShare".

* When you have finished installing "PhotoDeluxe", you may be asked to restart your computer. In this case, begin installing "ActiveShare" without restarting your computer.



This completes the installation of all the software components. Now proceed to "Using FinePixViewer" on page 41.

Installing the Software on Mac OS 8.6 to 9.2

The CD-ROM includes software for Mac OS 8.6 to 9.2 and for Mac OS X. This chapter describes the installation and setup procedures for Mac OS 8.6 to 9.2.

1 Check this before you start the installation.

Ensure that your Macintosh hardware and software meet the system requirements for the software to be installed.

2 Check the system software settings.

3 Install FinePixViewer and restart your Macintosh.

Click [Install FinePixViewer] and install the software as directed by the on-screen instructions. Then restart your Macintosh.

4 Connect the camera in DSC mode.

5 Disconnect the camera in DSC mode.

6 Install Acrobat Reader.

You must install this software as you need it to read the electronic manual.

When you have installed all the software...

Once you have finished installing all the software components, remove the CD-ROM. You will need this CD-ROM if you ever have to re-install any of the software, so keep it in a safe place away from dampness and out of direct sunlight.

1 Pre-installation Checklist

■ Hardware and software requirements

To run this software, you must have the hardware and software described below. Check your system before you begin the installation.

| | |
|-----------------------|---|
| Compatible Mac | Power Macintosh G3*1, PowerBook G3*1, Power Macintosh G4, iMac, iBook, Power Macintosh G4 Cube or PowerBook G4 |
| Operating System | Mac OS 8.6 to 9.2*2 |
| RAM | 64 MB minimum*3 |
| Hard disk space | Amount required for installation: 110 MB minimum Amount required for operation: 300 MB minimum (When FinePix CD Album Maker is used: 2 GB or better) |
| Display | 800 × 600 pixels or better, 16-bit color or better |
| Internet connection*4 | • To use the FinePix Internet Service or mail attachment function An Internet connection and e-mail transmission software • Connection speed: 56k or better recommended |
| Sound functions*5 | Speakers and microphone |

*1 Models with a USB port as a standard feature

*2 This software does not run correctly in the Mac OS X Classic environment.

*3 Turn virtual memory on if necessary.

*4 Required to use the FinePix Internet Service. The software can still be installed even if you do not have an Internet connection.

*5 Sound functions are required for audio input/output in VideoImpression.

NOTE

- Connect the camera directly to the Macintosh using the special USB cable. The software may not operate correctly if you use an extension cable or connect the camera via a USB hub.
- Push the USB connector fully into the socket to ensure that it is securely connected. The software may not operate correctly if the connection is faulty.
- Additional USB interface board is not guaranteed.

2 Check the system software settings

■ Enable File Exchange

Check whether File Exchange is active.

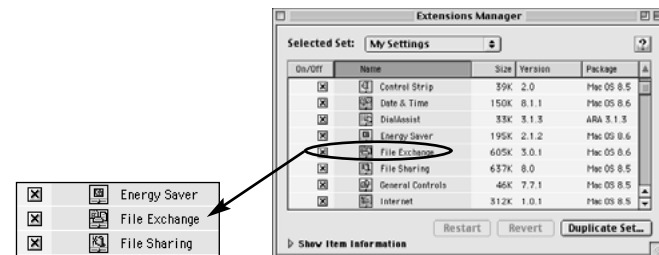
To use a SmartMedia that is supported by the camera, the File Exchange utility supplied with Mac OS must be running.

1. Switch on your Macintosh and start up Mac OS 8.6 to 9.2.

NOTE

Do not connect the camera to your Macintosh until the software installation is completed.

2. Select the Extensions Manager in the Control Panels and check that the File Exchange check box is ticked. If not, click in the box so that an appears and then restart your Macintosh.

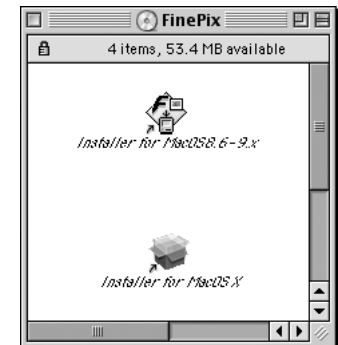


3 From FinePixViewer installation to restart

1. When you load the enclosed CD-ROM into the CD-ROM drive, the "FinePix" window automatically opens.

NOTE

If the "FinePix" window does not open automatically, double-click the CD-ROM icon.



2. Double-click "Installer for MacOS8.6-9.x" to launch the Installer.

- A confirmation message appears asking whether you want to continue with the installation. Click the [OK] button.



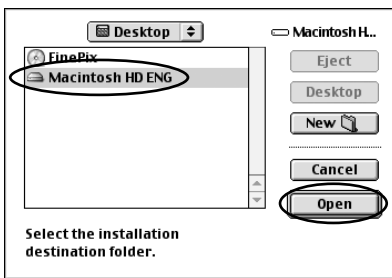
- The Installer setup screen appears. Click the [Install FinePixViewer] button.

* For more information on what is installed, click the [Explanation] button.



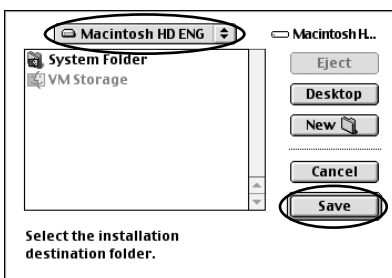
- Select the installation destination for FinePixViewer.

① Click the [Open] button to open the installation destination folder.



Select the installation destination folder.

② Click the [Save] button.



Select the installation destination folder.

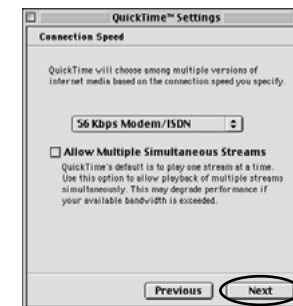
- Install VideoImpression as directed by the on-screen instructions.

- Install QuickTime as directed by the on-screen instructions and then restart your Macintosh.

* If you have already installed QuickTime version 5.0.2 or later, this installation is not performed.



Click [Agree] button in the "License" window.



If the "Connection Speed" window appears after your restart your Macintosh, set the correct speed for your environment of connection and then click the [Next] button.
* If you do not know your connection speed, simply click the [Next] button.

- After you restart your Macintosh, the "Guidance of FinePixViewer" alias is created on the desktop. Use your browser software to check the details and then proceed with the installation.

4 Connecting the Camera as a Card Reader

TIP

It is strongly recommended that you use the AC power adapter. Loss of power during data communications will prevent successful data transfer.

1. Load a SmartMedia containing photographed images into the camera.

See "Connection" in the camera Owner's Manual.

NOTE

- Do not format the SmartMedia from your camera on a Macintosh as this may make the card unusable for taking pictures.
- Use only SmartMedia containing shots taken on a FUJIFILM digital camera.

2. Select "DSC" as the USB setting on the camera and then switch the camera off.
3. Use the special USB cable to connect the camera to your Macintosh.
4. Switch the camera back on.

NOTE

- Always use the correct procedure when disconnecting the camera from your Macintosh or switching the camera off.
- Do not perform any of the following when the camera is connected to a Macintosh as this could damage the SmartMedia or corrupt the data on the SmartMedia: Disconnect the USB cable or AC power adapter / Touch the camera controls (power switch, control buttons, lens cover or slot cover)

5. FinePixViewer starts up automatically and the images on the SmartMedia are displayed. A new removable disk icon also appears on the desktop.



TIP

The Exif Launcher installed with the FinePixViewer automatically launches FinePixViewer when you connect the camera to your Macintosh.

NOTE

If FinePixViewer does not start up and the removable disk icon does not appear, the software was not installed correctly. Disconnect the camera, restart your Macintosh and re-install the software. If this does not resolve the problem, refer to the Troubleshooting section.

5 Disconnecting the Camera

1. Exit any applications that are using the camera (FinePixViewer, etc.).

2. Check that the camera and Macintosh are not communicating.

See "Connection" in the camera Owner's Manual.

3. Drag the removable disk icon to the Trash.



4. Switch the camera off.

5. Unplug the special USB cable from the camera.

See "Connection" in the camera Owner's Manual.

NOTE

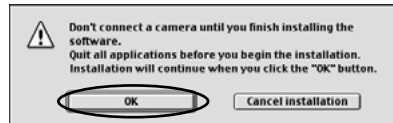
- Always close all the files in the camera (removable disk) folder and confirm that the camera and Macintosh are no longer communicating.
- Disconnecting the camera or the USB cable without first dragging the removable disk icon to the Trash could cause your Macintosh to malfunction.
- When the "Copying" message disappears from your Macintosh screen, wait a few moments before disconnecting the USB cable or removing the SmartMedia. If a large amount of data is being copied, camera access continues for a short time after the message displayed on the Macintosh has gone off.

6 Acrobat Reader installation

You must install Adobe Systems' Acrobat Reader software to read the FinePixViewer User's Guide (PDF).

If you already have the latest version installed, this step is not required.

1. Double-click the "Installer for MacOS8.6–9.x" icon to launch the installer.
2. A confirmation message appears asking whether you want to continue with the installation. Click the [OK] button.



3. The installer setup window appears. Click the [Install Acrobat Reader] button.



4. Install Acrobat Reader as directed by the on-screen instructions.

This completes the installation of all the software components. Now proceed to "Using FinePixViewer" on page 41.

Installing the Software on Mac OS X

The CD-ROM includes software for Mac OS 8.6 to 9.2 and for Mac OS X. This chapter describes the installation and setup procedures for Mac OS X.

1 Check this before you start the installation.

Ensure that your Macintosh hardware and software meet the system requirements for the software to be installed.

2 Install FinePixViewer and restart your Macintosh.

3 Connect the camera in DSC mode.

4 Disconnect the camera in DSC mode.

When you have installed all the software...

Once you have finished installing all the software components, remove the CD-ROM. You will need this CD-ROM if you ever have to re-install any of the software, so keep it in a safe place away from dampness and out of direct sunlight.

1 Pre-installation Checklist

■ Hardware and software requirements

To run this software, you must have the hardware and software described below. Check your system before you begin the installation.

| | |
|-----------------------|---|
| Compatible Mac | Power Macintosh G3*1, PowerBook G3*1, Power Macintosh G4, iMac, iBook, Power Macintosh G4 Cube, or PowerBook G4 |
| Operating System | Mac OS X (compatible with version 10.0.4, 10.1.3*2) |
| RAM | 192 MB minimum |
| Hard disk space | Amount required for installation: 110 MB minimum Amount required for operation: 300 MB minimum |
| Display | 800 × 600 pixels or better, at least 32,000 colors |
| Internet connection*3 | • To use the FinePix Internet Service or mail attachment function An Internet connection and e-mail transmission software • Connection speed: 56k or better recommended |

*1 Models with a USB port as a standard feature

*2 AVI movies cannot be played back on version 10.0.4.

*3 Required to use the FinePix Internet Service. The software can still be installed even if you do not have an Internet connection.

NOTE

- Connect the camera directly to the Macintosh using the special USB cable. The software may not operate correctly if you use an extension cable or connect the camera via a USB hub.
- Push the USB connector fully into the socket to ensure that it is securely connected. The software may not operate correctly if the connection is faulty.
- Additional USB interface board is not guaranteed.

■ Functions not supported in FinePixViewer for Mac OS X

| Function | Comment |
|----------------------------|--|
| AVI movie playback | Not supported in version 10.0.4 |
| Batch format conversion | Only supported for still images. |
| Create data for CD writing | Not supported. |
| Online updating | Information on updates can be obtained using [Support] in the Internet menu. |
| Online help | Online help can be viewed by opening "English.pdf" in the installation folder. |

■ Using the FinePix Internet Service

The user registration procedure for the FinePix Internet Service and the service upload method are different from those used in Mac OS 8.6 to 9.2. For more information on using the FinePix Internet Service, see P.72.

■ VideoImpression

This is not supported by Mac OS X. Note that live images cannot be captured in the Classic environment.

2 From FinePixViewer installation to restart

Only FinePixViewer is installed on Mac OS X.

NOTE

AVI movies cannot be played back on version 10.0.4.

1. **Switch your Macintosh on and start up Mac OS X. Do not launch any other applications.**
2. **Load the enclosed CD-ROM into the CD-ROM drive. The "FinePix" window opens.**

NOTE

If the "FinePix" window does not open automatically, double-click the CD-ROM icon.



3. **Double-click "Installer for MacOS X".**



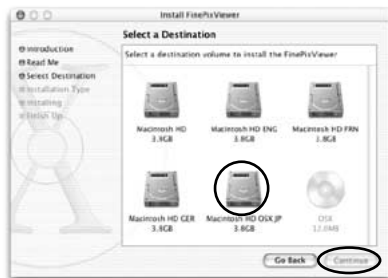
4. **Click the "lock" icon.**



5. **Enter the administrator name and password. Then click the [OK] button.**



6. Click the [Continue] button.
7. Quit out of any other programs that are running and then click the [Continue] button.
8. Select the Mac OS X startup disk as the installation destination and click the [Continue] button.



9. Click the [Install (upgrade)] button.
10. When you have completed the installation, click the [Restart] button.



3 Connecting the Camera as a Card Reader

TIP

It is strongly recommended that you use the AC power adapter. Loss of power during data communications will prevent successful data transfer.

1. Load a SmartMedia containing photographed images into the camera.

See "Connection" in the camera Owner's Manual.

NOTE

- Do not format the SmartMedia from your camera on a Macintosh as this may make the card unusable for taking pictures.
- Use only SmartMedia containing shots taken on a FUJIFILM digital camera.

2. Select "DSC" as the USB setting on the camera and then switch the camera off.

3. Use the special USB cable to connect the camera to your Macintosh.

4. Switch the camera back on.

NOTE

- Always use the correct procedure when disconnecting the camera from your Macintosh or switching the camera off.
- Do not perform any of the following when the camera is connected to a Macintosh as this could damage the SmartMedia or corrupt the data on the SmartMedia: Disconnect the USB cable or AC power adapter / Touch the camera controls (power switch, control buttons, lens cover or slot cover)

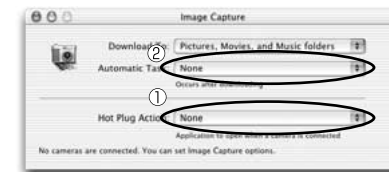
5. ImageCapture starts up and a removable disk icon appears on the desktop.

* If ImageCapture does not start up, double-click the "ImageCapture" icon in the "Application" folder.

6. Change the ImageCapture settings as shown below and then click the Close button.

TIP

With these settings, ImageCapture will no longer start up as of the next time you connect the camera to your Macintosh.



- ① Hot-Plug Actions: None
- ② Automatic Task: None

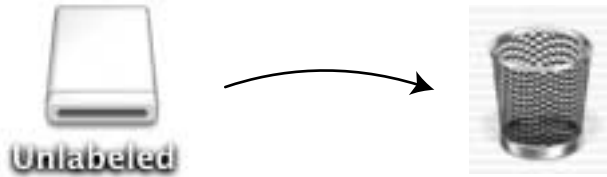
4 Disconnecting the Camera

1. Exit any applications that are using the camera (FinePixViewer, etc.).

2. Check that the camera and Macintosh are not communicating.

See "Connection" in the camera Owner's Manual.

3. Drag the removable disk icon to the Trash.



4. Switch the camera off.

5. Unplug the special USB cable from the camera.

See "Connection" in the camera Owner's Manual.

NOTE

- Always close all the files in the camera (removable disk) folder and confirm that the camera and Macintosh are no longer communicating.
- Disconnecting the camera or the USB cable without first dragging the removable disk icon to the Trash could cause your Macintosh to malfunction.
- When the "Copying" message disappears from your Macintosh screen, wait a few moments before disconnecting the USB cable or removing the SmartMedia. If a large amount of data is being copied, camera access continues for a short time after the message displayed on the Macintosh has gone off.

Now, you can connect and disconnect the camera in DSC mode.
Next, proceed to "Using FinePixViewer" on page 41.

Using FinePixViewer

Saving Images on Your Computer

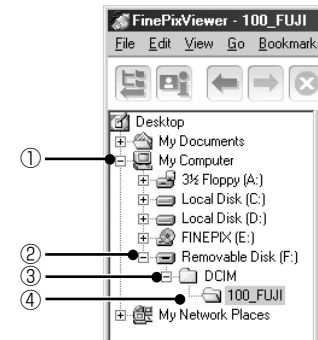
This section gives a brief overview of how to use FinePixViewer. Refer to these instructions while you are using FinePixViewer.

1. Connect the camera to your computer in DSC mode.

See "Connection" in the camera Owner's Manual.

2. When you open the folders shown below in order, the images in the camera are displayed in the thumbnail display area.

Windows

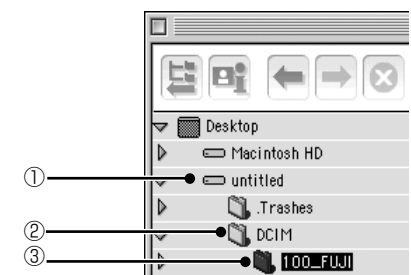


NOTE

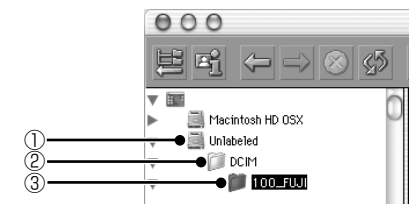
On Windows XP, the removable disk appears as "FinePix" (for the second and subsequent connections).



Mac OS 8.6-9.2



Mac OS X



3. Click the [Automatic Taking] button.

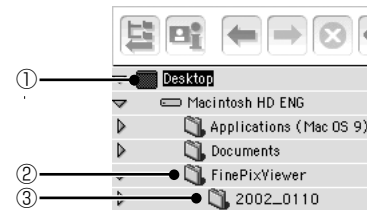
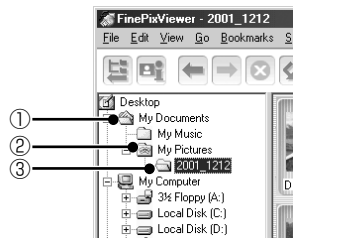


4. Check that the files are downloaded from the camera to your computer and that a folder with the photography date is created.

Open the folder as shown below.

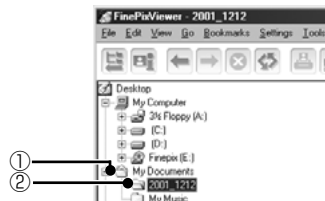
TIP

To open a folder, click on the plus “+” symbol (Windows) or arrow “▶” (Macintosh) to the left of the folder.



① indicates the folder in which FinePixViewer is installed.

OR



5. Double-click a still-image thumbnail to open an image window.

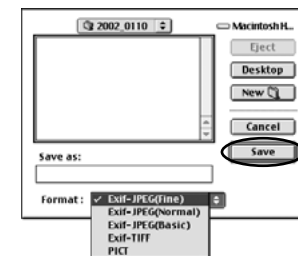
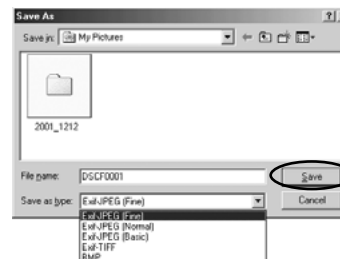


6. You can use functions such as “Rotate” and “Type Tool” to modify your image. For details, see “Mastering FinePixViewer” on page 82.

7. Click the [Save As...] button.



8. Enter a file name and click the [Save] button.



NOTE

If you repeatedly save an image in the Exif-JPEG format the image quality deteriorates. We recommend that you save the original file using the following procedure:

- First make a copy of the original file.
- Save the file under a different name or in a different location.
- Save the file in a format that does not lower the image quality (Exif-TIFF, BMP or PICT).

9. Close the image window.

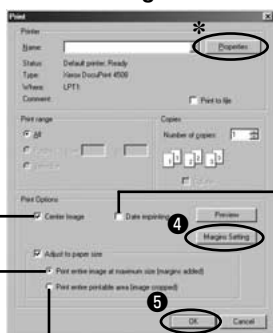
Printing

1. Double-click a still-image thumbnail to open an image window.
2. Click the [Print] button.



3. Tick the checkboxes for the required print option settings.
4. Click the [Preview] button to check how the image will be printed. When you are happy with the image, click the Close button.
5. Click the [OK] button (Windows) or [Print] button (Macintosh) to print the image.

<Print settings window>



Tick this checkbox to print the image in the center of the page.

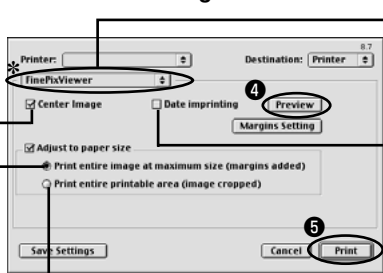
Ensures that the image is not cropped during printing.

Prints with the minimum margins.

Tick this checkbox to print the photography date.

* To set details such as the paper size and printing orientation, select "Page Setup" in the "File" menu. For more information, refer to your printer's operation manual.

<Print settings window>



Tick this checkbox to print the image in the center of the page.

Ensures that the image is not cropped during printing.

Prints with the minimum margins.

Select "FinePixViewer".

Tick this checkbox to print the photography date.

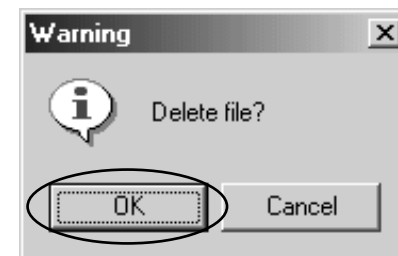
* To set details such as the paper size and printing orientation, select "Page Setup" in the "File" menu.

Deleting Images

1. Select the images to be deleted.



2. Click "Delete" in the File menu.
3. Click the [OK] button in the confirmation window to delete the selected images.



Using the FinePixViewer Advanced Features

The figure below gives a general overview of the procedure.

① Launch FinePixViewer

② Select a folder or thumbnail



Select a folder

Select a thumbnail

③ Operations

- Double-clicking
- Drag & drop
- Clicking buttons
- Using menus
- Using the Internet menu

This manual describes steps ① and ② and part of step ③. For information on the other functions, see “How to Use FinePixViewer” in the Help menu.

Launching FinePixViewer

Windows

In the "Start" menu, click "Programs" → "FinePixViewer" → "FinePixViewer".

Macintosh

Double-click "FinePixViewer" in the installation folder.

■ Changing the Automatic Launch Settings

Windows 98/98 SE/Me/2000



Launch automatically

Do not launch automatically

You can use either of the methods below to prevent FinePixViewer launching automatically.

- Change the Exif Launcher settings
 - ① Right click the Exif Launcher icon in the taskbar and select "Settings" from the pop-up menu.
 - ② Clear the "Start automatically when connected" checkbox.
 - * To restore the original setting, use the same procedure and place a tick in the automatic launch checkbox.
- Remove Exif Launcher
 - ① Right click the Exif Launcher icon in the taskbar and select "Exit" from the pop-up menu.
 - ② Click the [Start] button and select "Programs" → "Startup". Right-click "Exif Launcher" and select "Remove" from the pop-up menu.
 - * To restore the original setting, create a shortcut to Exif Launcher in the "Startup" folder.

Windows XP

In Windows XP, you can select different automatic launch settings for each connection mode.

- DSC connection mode
 - ① Open "My Computer" from the Start menu.
 - ② Click the "FinePix" icon and then click "Properties".
 - ③ Click the "AutoPlay" tab.
 - ④ Select "Pictures".
 - ⑤ Select "Select an action to perform".
 - ⑥ Select "Take no action" to disable automatic launching.
 - ⑦ Click the [OK] button.



- PC Camera connection mode
Follow the procedure used in other versions of Windows.



Launch automatically



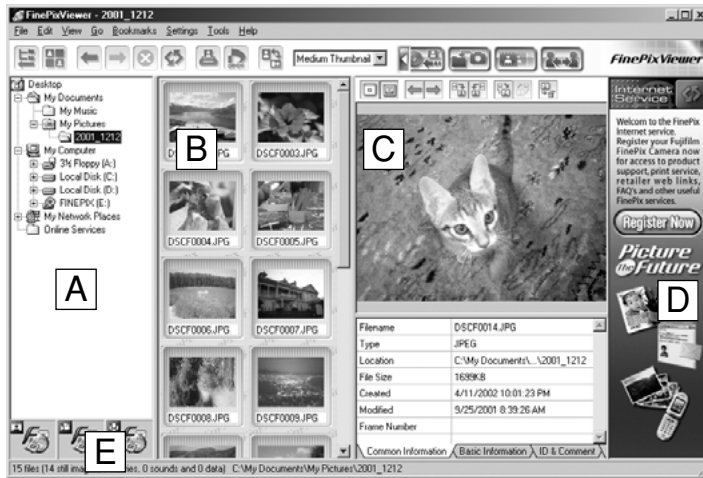
Do not launch automatically

Mac OS 8.6 to 9.2

You can use either of the methods below to prevent FinePixViewer launching automatically.

- Change the Exif Launcher settings
 - ① Select "Exif Launcher settings" in the Settings menu in FinePixViewer and click "Do not run Exif Launcher at restart".
 - ② Restart your Macintosh.
 - * To restore the original setting, use the same procedure and select the "Run Exif Launcher at restart" checkbox. Then restart your Macintosh.
- Remove Exif Launcher.
 - ① Select "Exif Launcher Settings" in the Settings menu in FinePixViewer and select the "Quit Exif Launcher immediately" checkbox.
 - ② Open "System Folder" → "Startup Items" and drag "Exif Launcher" to the Trash.
 - ③ Select "Empty Trash..." in the "Special" menu.
 - * To restore the original setting, reinstall the software.

FinePixViewer Components



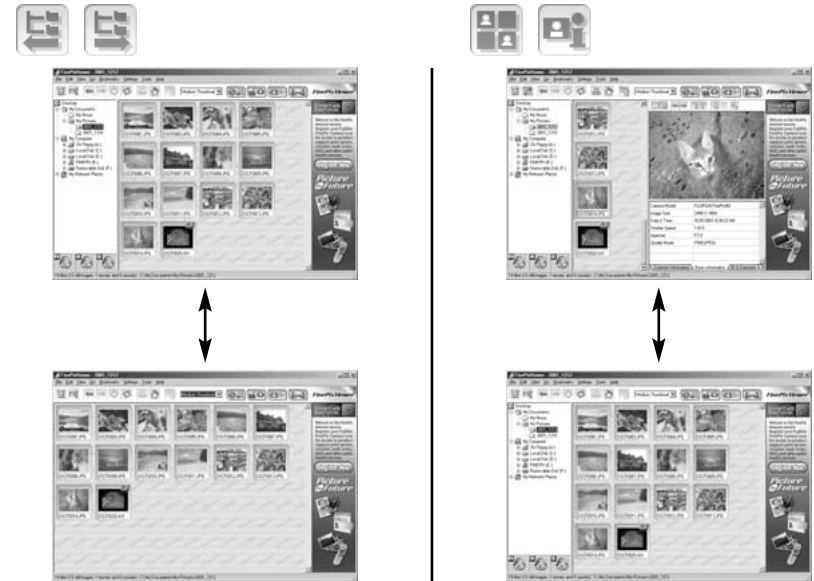
| Name | Function |
|------|-----------------------------------|
| A | Folder tree display area |
| B | Thumbnail display area |
| C | Playback pane |
| D | Internet Service display area |
| E | Playback application display area |



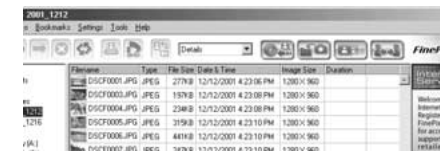
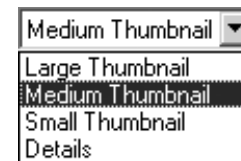
The images in the folder selected in the folder tree display area **A** are displayed in the thumbnail display area **B**.

Switching between Windows

Showing or hiding the Playback pane or folder tree.



Selecting the thumbnail display mode



You can list the photography dates and times and the image sizes by selecting "Details".

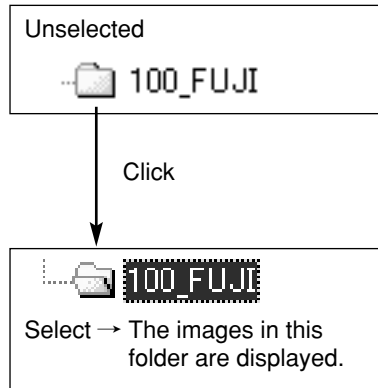
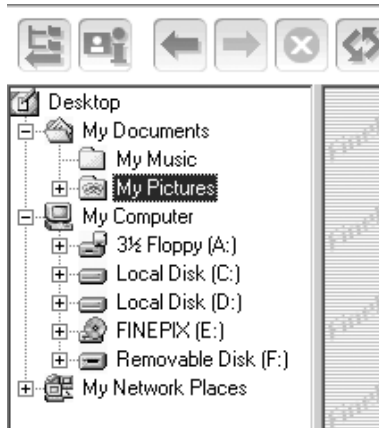
Resizing areas





You can resize an area by dragging its frame.

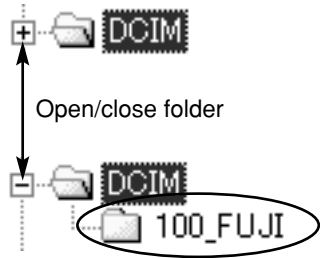
Selecting Folders



When you select a folder, the folder name is highlighted and the images in that folder are displayed in the thumbnail display area.




Windows

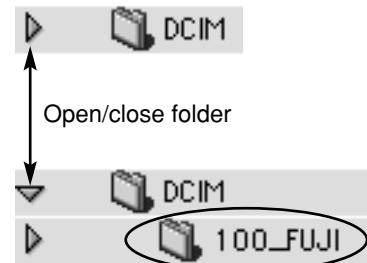
If there are subfolders inside the folder, a plus  or minus  symbol appears to the left of the folder. Clicking on the plus or minus symbol opens or closes the folder.




If no  or  is displayed, the folder contains no subfolders.

Mac OS 8.6–9.2

To open or close a folder, click the arrow  to the left of the folder.



Mac OS X

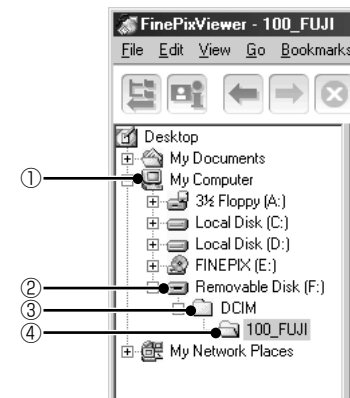
To open or close a folder, click the arrow  to the left of the folder.



Finding the camera (SmartMedia) on your computer

Open the folders in the sequence shown below to display the images on the camera in the thumbnail display area.

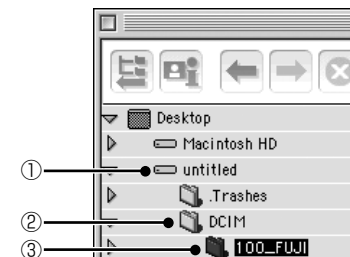
Windows



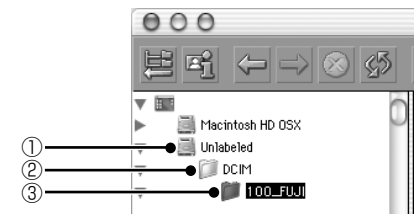
NOTE

On Windows XP, the removable disk appears as "FinePix" (for the second and subsequent connections).

Mac OS 8.6–9.2



Mac OS X



Copying Images

You can use drag and drop to copy folders and images.

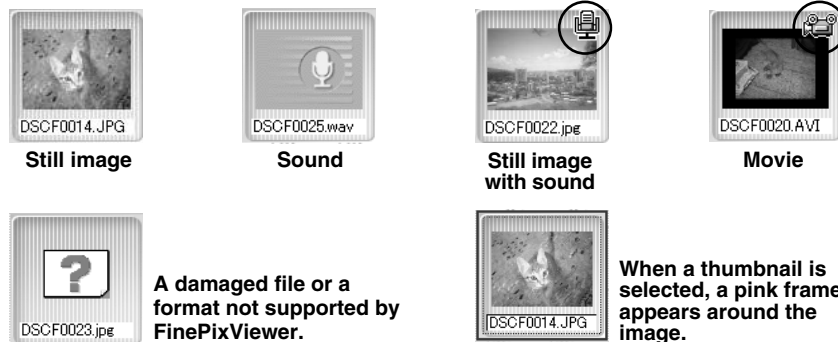


| Aim | Operation | Mouse pointer during the operation (Windows) |
|-------------|--|--|
| Copy | A Drag and drop the folder or image in the folder tree display area while holding down the [Ctrl] key (Windows) or [option] key (Macintosh). | |
| Stop a copy | B Drop the folder or image in the thumbnail display area. | |

When you drop the folder or image (release the mouse button) the operation ends.

Select a Thumbnail

The thumbnail display area shows a list of reduced versions of the images in a folder. The reduced images are referred to as thumbnails. The type of thumbnail shown differs depending on the file format.



This section describes how FinePixViewer operates when you select a thumbnail. Refer to the operation examples provided here.

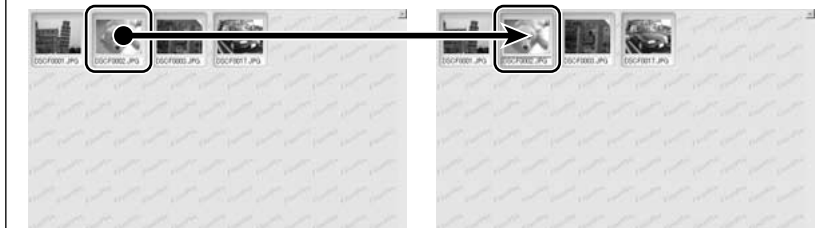
- When you click a thumbnail, only that thumbnail is selected.
- To select multiple images, drag the mouse so that the images are enclosed.
- To select additional thumbnails, hold down the [Ctrl] key (Windows) or [shift] key (Macintosh) as you click the images.
- Click in the background to deselect all the selected images.

Operation Examples

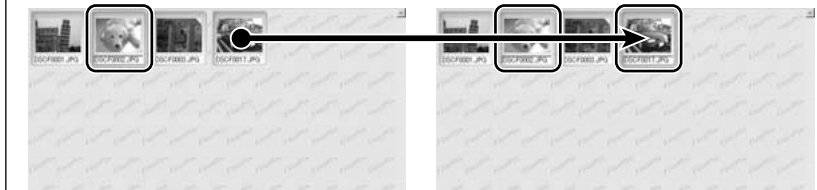
Before

After

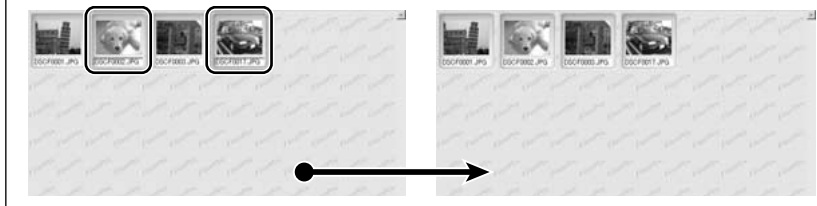
1. Click (to select 1 image only).



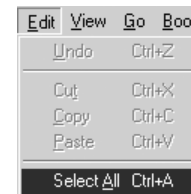
2. Click while holding down the [Ctrl] key (Windows) or [shift] key (Macintosh) (to select another image).



3. Click in the background (to deselect all the selected images).

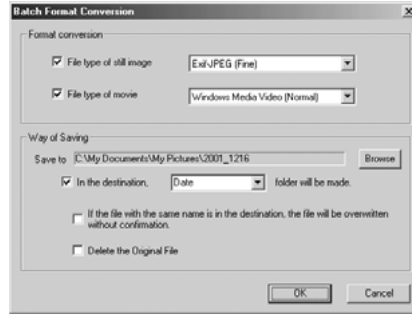


4. Click "Select All" in the "Edit" menu (to select all the images).



Batch Format Conversion

This function allows you to convert the formats of multiple files at once. You can use this, for example, when you want to make the file sizes smaller. Select the thumbnails with the formats you want to convert and specify the settings.



Format Conversion

Select the file type you want to convert.

| Still Image File Type | Features/Typical Uses | Quality |
|-----------------------|---|---------------------------|
| Exif-JPEG | Smaller file sizes/On the Internet | Lowered during saving |
| Exif-TIFF | Saved with its Exif data/To retain image quality and information | Not lowered during saving |
| BMP (Windows only) | Standard Windows image file format/For viewing on other Windows PCs | |
| PICT (Macintosh only) | Standard Macintosh image file format/For viewing on other Macintoshes | |

Windows

| Movie File Types | Features |
|----------------------------------|--|
| Windows Media video (Normal) | Saves files in a standard Windows file format. Has lower image quality and smaller file sizes. |
| Windows Media video (for E-mail) | |

Macintosh

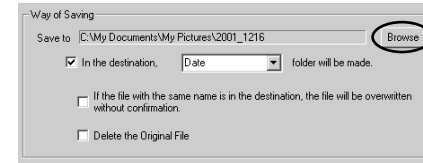
| Movie File Types | Features |
|------------------------------|--|
| QuickTime movie (Normal) | Saves files in a standard Macintosh file format. Has lower image quality and smaller file sizes. |
| QuickTime movie (for E-mail) | |

NOTE

Only AVI (Motion JPEG) movies shot on a FUJIFILM camera can be converted and saved.

Way of Saving

Specify the save destination for the converted files. Once you specify the destination and click the [OK] button, the file format is converted. The same settings are used for subsequent file format conversions.



Click the [Browse] button to change the save destination.

In the destination, Date folder will be made.

If you tick this checkbox, a folder is created in which all the images are saved. If there is already a folder with that name, the images are saved in that folder.

Naming folders

| | |
|---------------|---|
| Date | The file's date is used as the folder name. |
| The Same Name | The name of the folder containing the original file is used as the folder name. |
| Arbitrary | Enter the name yourself. |

If the file with the same name is in the destination, the file will be overwritten without confirmation.

If you tick this checkbox and there is already a file with the same name, that file is overwritten without any warning being displayed. You are advised to leave this checkbox blank unless you have a particular reason.

Instructions that can be selected in the overwrite warning screen

| | |
|-----------|--|
| Overwrite | Deletes the file in the save destination and saves the data as a new file. |
| Cancel | Cancels batch processing. |
| Skip | Leaves the file in the save destination and proceeds to the next step. |
| Rename | Allows you to rename the file. |

Example where "Overwrite" applies only to file A and the other files are skipped.

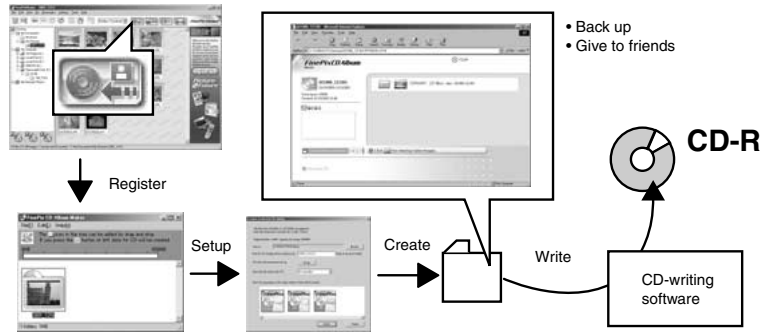


Delete the Original File

If you tick this checkbox, all the original files are deleted. You are advised to leave this checkbox blank unless you have a reason.

Making a FinePix CD Album

FinePix CD Album Maker is a tool that helps you to process images and record them on CD-R disks. This function is useful when you want to back up your images or show them to a friend who does not have FinePixViewer.



To write a CD-R disk, you need a CD-R drive and CD writing software. If you use the Windows XP or Mac OS CD writing functions, your disks may be unreadable when you give them to other people. Still images in formats other than JPEG (such as TIFF files) cannot be viewed in the Internet browser. You should use batch format conversion to save your images in JPEG format before creating a FinePix CD Album.

■ CD writing software for which operation has been verified

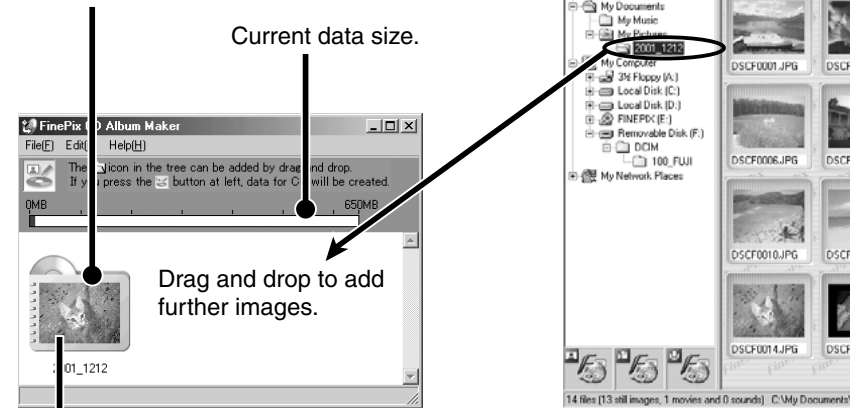
| Windows | Macintosh |
|-------------------------|---------------|
| roxio Easy CD Creator 5 | roxio Toast 5 |

1. Launch FinePixViewer.
2. Click the folder containing the images you want to write to the CD and then click the [Create data for CD writing] button.



3. The "FinePix CD Album Maker" window opens and the folders selected in step 2 are registered.

Images are displayed showing the folder contents.

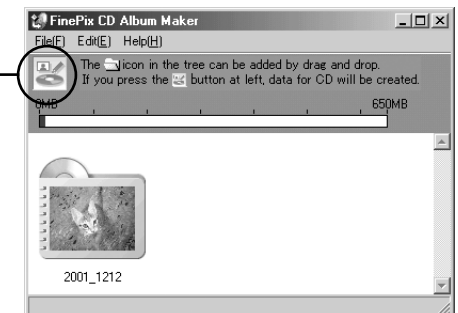


When you select a folder and click "Remove Registration" in the "File" menu, that folder is deregistered.

TIP

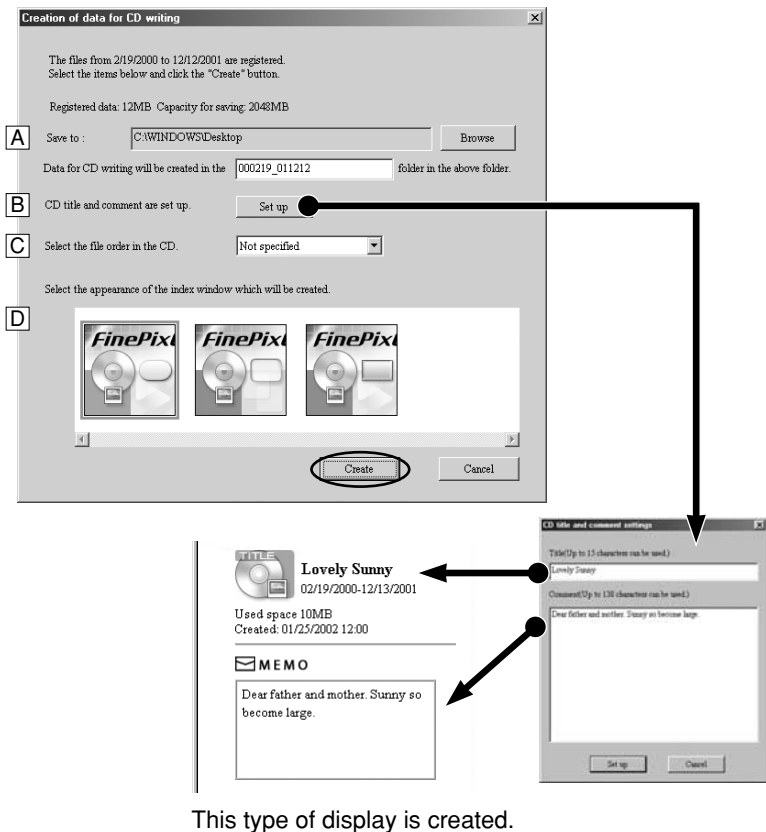
- A warning message appears if the amount of registered data exceeds 650 MB.
 - You cannot register thumbnails displayed in FinePixViewer. Move the thumbnails to a new folder and then register the new folder.
4. Because CDs written using this function cannot be rewritten, check that all the data you intended to register is in fact registered.
 5. When you have registered all your images, click the [Create data for CD writing] button.

[Create data for CD writing] button



6. When you have completed the settings, click the [Create] button.

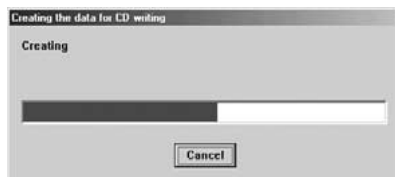
| | |
|---|--|
| A | Specify the folder used for creating the CD writing data (up to 15 alphanumeric characters (including quotation marks)). |
| B | Sets the title and comment for the created HTML file (web page data). |
| C | Select the order in which files are arranged on the CD. |
| D | Decide the styles used in the created HTML file (web page data). |



This type of display is created.

7. Wait a few moments until data creation is completed.

TIP
Times vary depending on your computer's performance, but writing takes about 15 minutes for around 600 MB of data (approx. 600 files).



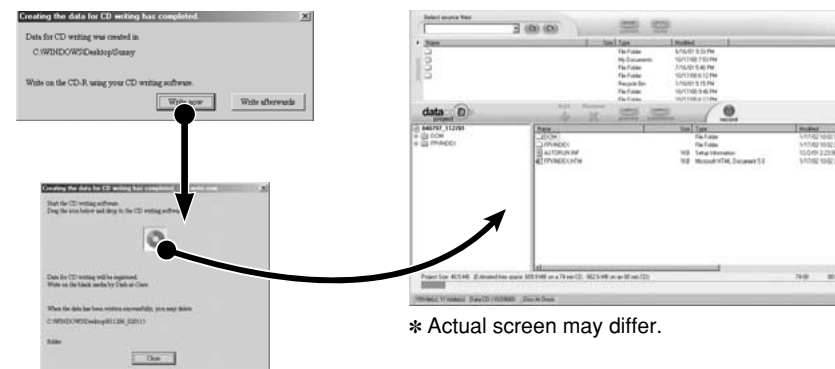
**8. Use the formats below to record images onto the CD.
Recording mode: DiscAtOnce
Format: ISO 9660 level 1**

TIP

About DiscAtOnce

- DiscAtOnce is a method for writing data to a CD-R disk in which all the data is written in a single operation. This method does not allow further data to be written to the disk, but it provides good compatibility and disks recorded using this method can be read even on older CD-ROM drives.
- DiscAtOnce is sometimes abbreviated as DAO.

If "Write now" is selected

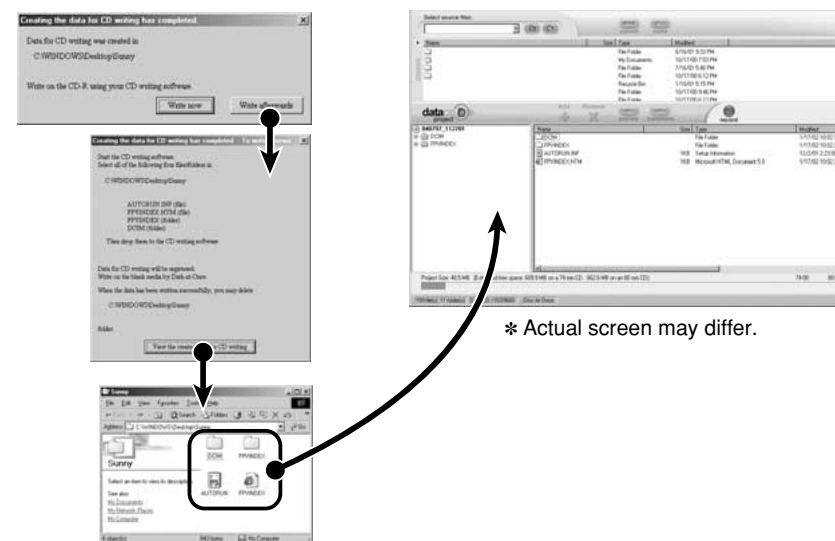


* Actual screen may differ.

NOTE

Do not drag and drop the CD icon to a location outside the CD writing software.

If "Write afterwards" is selected



* Actual screen may differ.

Attaching Images to E-mail Messages in FinePixViewer

FinePixViewer provides a simple procedure for attaching images to an e-mail message.

■ Supported E-mail Software

The e-mail software programs listed below can only be used if they are selected as your default e-mail software.

Windows

Outlook Express, Outlook 2000 or Outlook 2002

Mac OS 8.6–9.2

Outlook Express

Mac OS X

Mail

NOTE

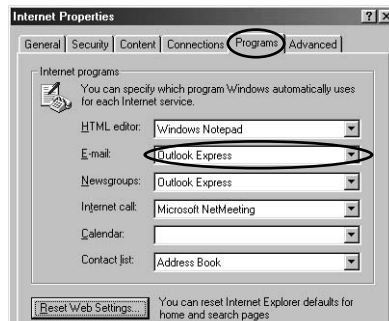
Contact your ISP (Internet Service Provider) for information on setting up your e-mail software.

■ Check the following:

Check that your e-mail software is registered correctly.

Windows

- 1 In the “Start” menu, click “Settings” → “Control Panel” → “Internet Properties” and then click the “Programs” tab.
- 2 Check that Outlook Express or Outlook is shown in the “E-mail” field.



When Using Outlook Express 4 on Windows 98

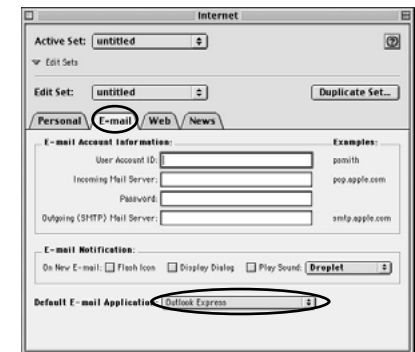
Follow the procedure below to set up Outlook Express to attach images to e-mail messages in FinePixViewer*. To check the Outlook Express version, click “About Microsoft Outlook Express” in the Outlook Express “Help” menu.

*This feature can be used only when Outlook Express is selected as your default e-mail application.

- ① Quit any e-mail applications other than Outlook Express that are currently running.
- ② Click “Options” in the “Tools” menu to open the “Options” window.
- ③ Click the “General” tab and click the “Make Outlook Express my default e-mail program” checkbox so that it is ticked.
- ④ Click the “Make Outlook Express my default Simple MAPI client” checkbox so that it is ticked. When the confirmation message for the changed settings appears, click the [Yes] button.
- ⑤ Click the [OK] button to close the “Options” window and click the [OK] button again when the following message appears:
“The Simple MAPI client has been changed. You may need to restart your machine for this change to take effect.”
- ⑥ Exit Outlook Express and restart your computer.

Mac OS 8.6–9.2

1. Click “Control Panels” → “Internet” and then click the “E-mail” tab.
2. Check that “Outlook Express” is shown in “Default E-mail Application”.



Mac OS X

1. Click “System Preferences...” in the Apple menu.
2. Click “Internet” and then click “Mail”.
3. Check that “Mail” is selected as the “Default e-mail software”.

■ Attaching Images

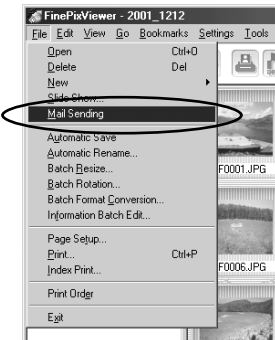
1. **Launch FinePixViewer.**
In the “Start” menu, select “Programs” → “FinePixViewer” → “FinePixViewer”.
2. **Click the folder containing the images you want to attach.**



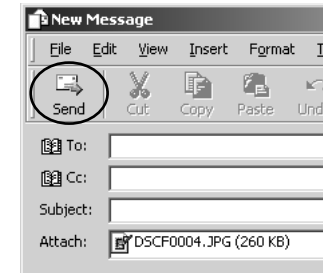
3. **Click the thumbnails for the images to select them.**
 - * Up to 10 images can be sent with one e-mail message.
4. **With the images selected, click “Mail Sending” in the “File” menu.**
 - * You can send a total of up to 1 MB of image data at one time.
If the total exceeds 1 MB, a warning message appears when you click “Mail Sending”. If this occurs, reduce the number or size of the images until the message no longer appears.

TIP

Use the Batch Format Conversion function (→ P.56) to convert the file format for movies.



5. **The Outlook Express or Outlook mail transmission window opens and the images are automatically attached to your e-mail message. Type in the address, title and your message and then send the message in the usual way.**



NOTE

Do not exit FinePixViewer until mail transmission is complete, as this will prevent the e-mail with the images attached from being sent.

■ Setting the file size for attached images

When FinePixViewer attaches an image file to an e-mail message, it adjusts the size of the image file in accordance with the “Mail Transmission Settings”.
* When an image is resized, the original image is not affected.

1. **Click “Mail Transmission Settings” in the “Settings” menu.**
2. **Place a tick in the “Resize” checkbox and specify the number of pixels (height and width) for resized images.**



TIP

If you do not want to resize the image, deselect the “Resize” checkbox.

Using the FinePix Internet Service

NOTE

Mac OS X users should refer to P.72.

Using FinePixViewer also allows you to access the FinePix Internet Service via the Internet.

* A working Internet connection is required.

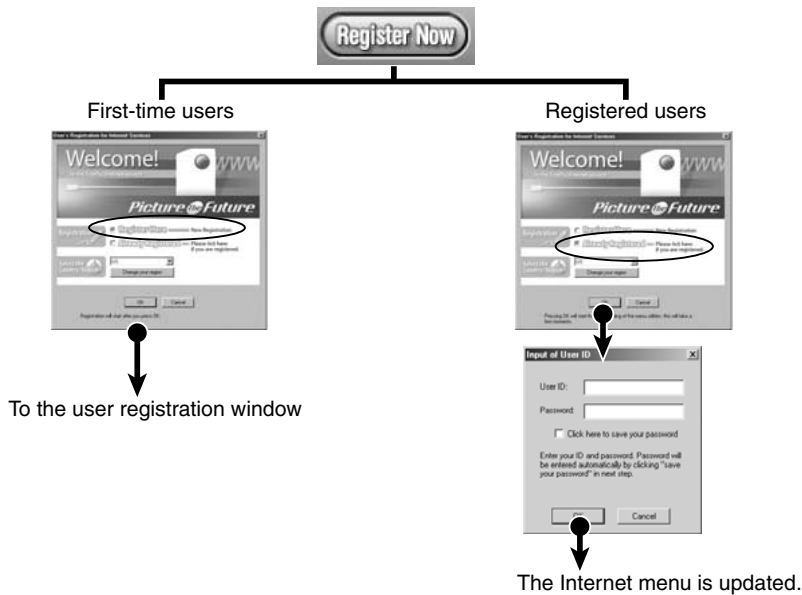
* A FinePix Internet Service fees do not include your Internet service provider (ISP) connection fees or any phone charges incurred in dialing your ISP's access point.

The figure below gives a general overview of the procedure.

① User Registration

NOTE

Your user ID and password are very important. Make sure you do not forget them.



② Using the Services

You can also use the “Videoconferencing” (Windows only) and “Online Update” services.



Obtain the latest service information.



You can use videoconferencing.

User Registration

To use the FinePix Internet services, users must first register.

* Follow the steps below to register. Users can be registered for free.

1. Launch FinePixViewer.
2. Click the [Register Now] button.



3. The “User’s Registration for Internet Services” dialog box opens. As shown below, select [Register Here], then select the country or region where you are living and click the [OK] button.

☞ If you are not already connected to the Internet, connect now. (A dial-up dialog box may be displayed.)

* If you have completed the user registration, select “Already Registered” (E.g. When you want to re-install FinePixViewer after completing user registration).

* If the country or area where you are living does not appear in the pull-down list, select “OTHERS”.



- When the browser starts up, proceed as directed by the on-screen instructions.
- Enter the required information in the user registration page.

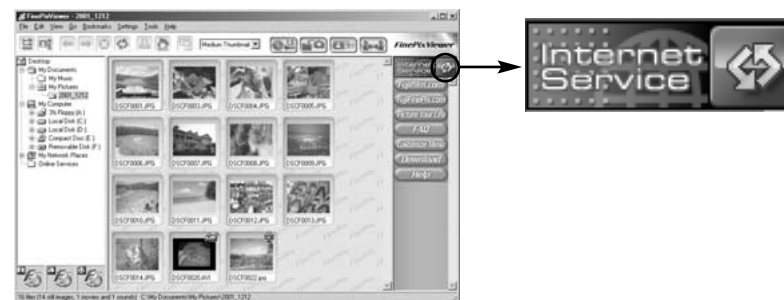
- Enter the name of your choice (nickname, etc.).
- Enter a password of your choice using letters and/or numbers. Then enter the password again for confirmation.
- Enter your name.
- Enter your e-mail address.
- Enter the remaining required information.
 - * After you register, a confirmation e-mail message is sent to you. Be sure to enter a valid e-mail address at which you can receive the message.
 - * The actual user registration page may differ slightly in appearance from the sample shown here.

- When you have entered all the required information, click the [Registration] button at the bottom of the page.

Once you complete the registration, a confirmation e-mail is sent. Wait a few moments until the message is sent.

Using the Services

- Click the [Update menu] button in FinePixViewer.



- The "Input of User ID" dialog box appears. Enter the user ID and password set during user registration and then click the [OK] button to update the Internet menu.

- If you are not already connected to the Internet, the software automatically attempts to connect (for dial-up connections).

TIP

- If you tick the "Click here to save your password" checkbox, you will not need to enter your password next time. You may need your user ID and password. Make sure you do not forget them.
- As well as the Internet menu being updated, related information pages may also be opened. Because these pages may contain good news or useful information, you should update the Internet menu frequently.

- Click the menu button for the service you want to use.

- If you are not already connected to the Internet, the software automatically attempts to connect (for dial-up connections).
- Operation after you click the menu button differs depending on the button you click. For instance, you may jump to your service provider's web site or an upload dialog box may open.
- * The actual Internet menu may differ slightly in appearance from the sample shown here.

TIP

Move the mouse cursor over an Internet menu button to view information about the service.

- When you have finished using the Internet services, disconnect from the Internet (for dial-up connections).

NOTE

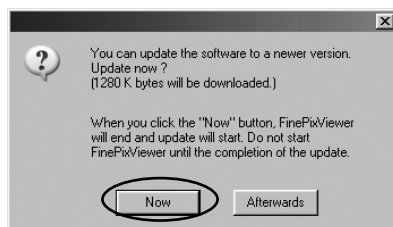
The connection speed will vary significantly depending on the quality of your phone line and the amount of traffic on the server to which you are connected.

Obtaining the Latest Version of FinePixViewer

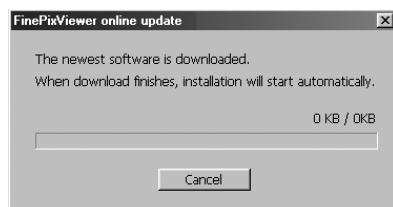
By registering as a FinePix Internet Service user, you can download the latest version of FinePixViewer and install it on your computer.

When you update your software, your user ID and password for the FinePix Internet Service are deleted from your computer. Ensure that you do not forget your registered user ID and password.

1. When you click "Software Update" in the "Help" menu, FinePixViewer connects to the Internet and looks for a new version of FinePixViewer.
2. If a new version is found, the dialog box shown below appears.



3. Click the [Now] button and then wait until downloading is completed.



4. Updating begins automatically.



5. Restart your computer.

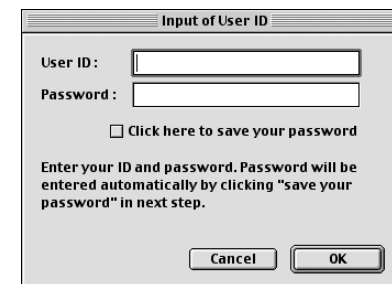
6. After your computer restarts, download the Internet menu again. Launch FinePixViewer and click the [Register Now] button.



7. Select "Already Registered" and then click the [OK] button.



8. Enter your user ID and password.



The update is completed when the Internet menu appears.

Using the FinePix Internet Service (Mac OS X)

If you use the FinePixViewer, you can also access the FinePix Internet Service via the Internet. When you register, you will be able to use the various services provided in the country where you are registered.

- The services provided vary depending on the country.
- The services are frequently updated, so we recommend that you access them regularly.
- In order to access the service you need to have an internet connection, provided by an ISP (Internet Service Provider.)
- * You must have the hardware and software required environment for connecting to the Internet.
- * The FinePix Internet Service does not include any connection fees charged by your service provider or the normal telephone charges for dialing your service provider's access number.

User Registration

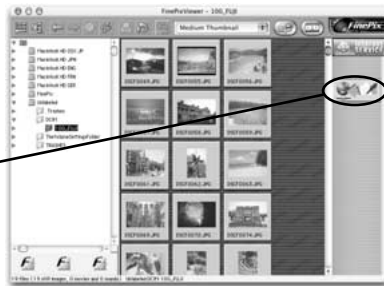
To use the FinePix Internet services, users must first register.

* Follow the steps below to register. Users can be registered for free.

1. Double-click the “FinePixViewer” icon in the installed folder.

2. Click the [User's Registration] button. The “Operation Selection” dialog box appears.

<User's Registration button>



3. Select “User's registration” and click the [OK] button.

* If you are not already connected to the Internet, connect now. (A dial-up dialog box may be displayed.)

* Only select menu acquisition if you have already completed the user registration process and you have re-installed “FinePixViewer”, etc.



4. The User's Registration dialog box opens. Select the country or area where you are living and click the [OK] button.



- * The actual user registration page may differ slightly in appearance from the sample shown here.
- * If the country or area where you are living does not appear in the pull-down list, select “OTHERS”.

5. When the browser starts up, proceed as directed by the on-screen instructions.

6. Enter the required information in the user registration page.

- 1 Enter the name of your choice (nickname, etc.).
 - 2 Enter a password of your choice using letters and/or numbers. Then enter the password again for confirmation.
 - 3 Enter your name.
 - 4 Enter your e-mail address.
 - 5 Enter the remaining required information.
- * After you register, a confirmation e-mail message is sent to you. Be sure to enter a valid e-mail address at which you can receive the message.
 - * The actual user registration page may differ slightly in appearance from the sample shown here.

7. When you have entered all the required information, click the [Register] button at the bottom of the page.

Once you complete the registration, a confirmation e-mail is sent. Wait a few moments until the message is sent.

Using the Services

Once user registration is completed, you can use the FinePix Internet services.

■ Selecting services

1. Click the menu button for the service you want to use.

- ☞ If you are not already connected to the Internet, the software automatically attempts to connect (for dial-up connections).
- ☞ Operation after you click the menu button differs depending on the button you click. For instance, you may jump to your service provider's web site or an upload dialog box may open.
- * The actual Internet menu may differ slightly in appearance from the sample shown here.

TIP

Move the mouse cursor over an Internet menu button to view information about the service.

2. When you have finished using the Internet services, disconnect from the Internet (for dial-up connections).

NOTE

The connection speed will vary significantly depending on the quality of your phone line and the amount of traffic on the server to which you are connected.

■ Updating the Menu

1. Select "Menu Update" from the "View" menu.
2. The "Enter Network Password" dialog box appears. Enter the user ID and password set during user registration and then click the [OK] button to update the Internet menu.



- ☞ If you are not already connected to the Internet, the software automatically attempts to connect (for dial-up connections).

TIP

As well as the Internet menu being updated, related information pages may also be opened. Because these pages may contain good news or useful information, you should update the Internet menu frequently.

Videoconferencing with PictureHello

■ What is videoconferencing?

Videoconferencing is a form of communication in which you can see a live image of the person you are calling as you converse in realtime. This explanation describes the use of the FinePixViewer PictureHello software, in which specific PCs communicate with each other (one-to-one communication) via the Internet.

The main steps in the procedure are as follows:

1 Check your computer's hardware and software.

Ensure that your computer hardware and software meet the system requirements.

2 Register your e-mail address.

3 Set the camera to "PC CAMERA" mode and connect it to your computer.

Refer to the Owner's Manual for your camera for information on selecting "PC Camera" mode.

4 Log in.

5 Begin the videoconferencing session.

6 To end the call, click the [End call] button.

7 To end the videoconferencing session, log out.

■ Hardware and software required for videoconferencing

● A FUJIFILM camera equipped with the “PC Camera” function

● A PC with an Internet connection

- ☆ 56kbps modem connection or better or an ISDN connection
- ☆ An established service contract with an Internet service provider (ISP)
- * Depending on your type of Internet connection and/or your modem connection speed, video quality may deteriorate and some frames may be lost.
- ☆ A sound card installed and speakers and a microphone connected to your PC
- * PCs that do not have a sound card installed and speakers and a microphone connected can only be used to transmit images.
- * For the best results, use headphones with an attached microphone.
- ☆ If your Internet connection is via a router or via a LAN (connecting machines on the LAN to the Internet), you cannot use videoconferencing.
- ☆ If you are using Windows XP and you tick the “Protect my computer and network by limiting or preventing access to this computer from the Internet” checkbox in the Internet connection firewall settings, videoconferencing cannot be used. See “Troubleshooting” (→ P.100) for information on setting up firewalls.
- ☆ If your PC and the other party's PC are connected to the same LAN and you are connected to the Internet via a router, PictureHello can be used between the 2 PCs. However, if there is a firewall between the LAN and external lines, the status of parties in the Address Book may be “Unknown” depending on the firewall settings, making calls to those parties impossible.

● FinePixViewer and NetMeeting 3.01 installed

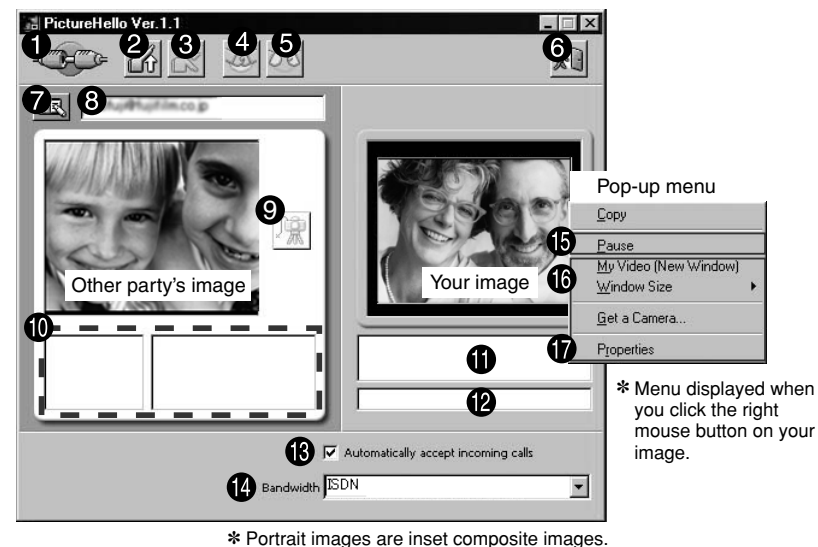
● A completed FinePix Internet Service user registration

- * When the [Register Now] (Register Now) button is displayed on the right side of the FinePixViewer window, you must complete the user registration procedure (→ P.66).

Important Notes on E-mail Addresses for Videoconferencing

Take care when using your own e-mail address. Disclosing your e-mail address to people other than those you wish to call could result in unintentional and unnecessary videoconferencing calls from third parties.

■ Picture Descriptions



| Name | Explanation |
|---------------------------------------|---|
| ① Connection icon | Indicates whether you are logged in to the server. |
| ② Login button | Logs in to the server. |
| ③ Logout button | Logs out from the server. |
| ④ Start Call button | Notifies the other party that the call has begun. |
| ⑤ End Call button | Ends a call. |
| ⑥ Close button | Exits PictureHello. |
| ⑦ Address Book button | Opens the address book. |
| ⑧ Address input field | Used for specifying the party to be called. You can use this field to directly type in the other party's e-mail address. |
| ⑨ Capture button | Pauses the video image of the other party and saves the paused frame as a still image. |
| ⑩ Remote party information | Reflects the information in the address book. |
| ⑪ Own information | E-mail address used at user registration. |
| ⑫ Message to other party | Message entered during login. |
| ⑬ Answer automatically checkbox | Tick this checkbox to begin videoconferencing automatically. |
| ⑭ Bandwidth (network speed) | Select the network connection speed used for calls from this list. If you change the bandwidth, you must then restart FinePixViewer. |
| ⑮ “Pause” | If you uncheck this item, the live image on your screen begins to move. When you want to check whether the live image is displayed correctly, uncheck this item. (“Pause” is unchecked automatically during calls.) |
| ⑯ Items other than “Pause” and “Copy” | PictureHello automatically selects the optimum setting. Ordinarily, these settings can be ignored. |
| ⑰ Properties | To rotate the input screen, click the following in order: [Properties] → (Optional screen display) [Video] tab → [Source] button → (USB PC Camera display screen) [Camera Controls]. Then specify the rotation angle in [Roll]. |

■ Preparations for videoconferencing (to be followed by both parties)

1. Obtain the e-mail addresses of both parties. (These must be the e-mail addresses given during FinePix Internet Service user registration.)
2. Switch the camera on and select “PC CAM” as the USB setting.
3. Use the special USB cable to connect the camera to your PC.
4. Check that FinePixViewer has started up and the PictureHello window has opened automatically.

See “Connection” in the camera Owner’s Manual.

To open the PictureHello window manually, click “Videoconferencing” in the FinePixViewer “Tools” menu.

* You cannot use PictureHello and NetMeeting at the same time. Do not attempt to launch NetMeeting when you are using PictureHello.

NOTE

- Do not switch off the camera or disconnect the USB cable during live image display as this may cause your PC to hang.
- If the “PictureHello” window does not open, refer to “Troubleshooting” (→ P.94).
- If no live image is displayed, right-click in the live image display area and uncheck “Pause” in the menu (→ P.77).

5. Open the “Address book” and store the e-mail address of the other party. (→ P.81)

6. Log in.

If your system is set up to automatically connect to the Internet


Click the  [Login] button.

If your system is set up for manual connection to the Internet

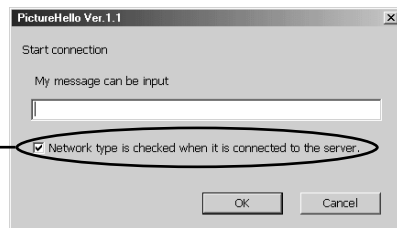
Connect to the Internet and then click the  [Login] button.



7. A message input dialog box opens. Type in a message to the other party and click the [OK] button.

When you are successfully logged in, the  connection icon changes to indicate a call in progress.

* If your network setup is checked and there is a possibility that you cannot use videoconferencing, the “Information” dialog box opens. If you clear the checkbox, the “Information” dialog box does not appear.



NOTE

- Messages are sent without being encoded. Take care not to send important information such as telephone or credit card numbers.
- To change the message, you must log out and then log in again.

■ Starting the call

1. Click the  [Address Book] button to open the Address Book.



2. Click the [Update Status] button in the Address Book to check the status of the party you are calling.

If the other party is available

Click the information column for the other party to select him or her and then click the  [Start Call] button.

The call begins when the other party replies.

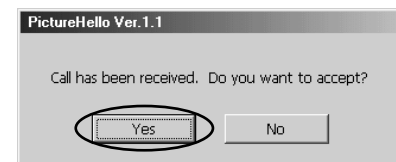
If the other party is unavailable

- ① Stay logged on and wait a few minutes.
- ② Click the [Update Status] button in the Address Book to check the status of the other party.
- ③ Repeat steps ① and ② until the other party becomes available. If you decide not to call, see “Ending the Videoconference” on P.80.

■ When a call comes in

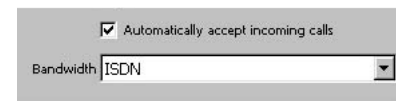
A confirmation dialog box appears. Click the [Yes] button to begin the call.

If you click the [No] button, the call does not begin. The caller sees a message stating, “The other party cannot receive calls.”



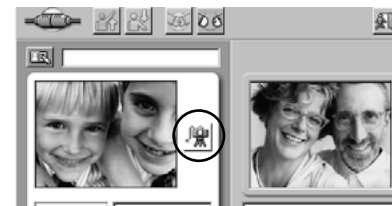
TIP

If you tick the “Automatically accept incoming calls” checkbox, no confirmation message is displayed and the call begins automatically.



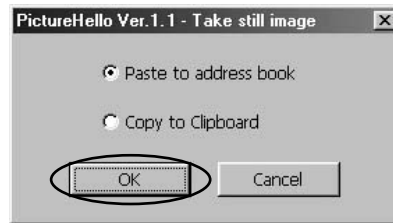
■ Saving a Caller’s Image

1. When you click the  [Capture] button during a call, the “Remote party information” image is updated.



2. A dialog box to confirm the save destination appears. When you select “Paste to address book” and click the [OK] button, the image in the address book is updated.

* If you accept a call, you can only select “Copy to Clipboard” during the call.



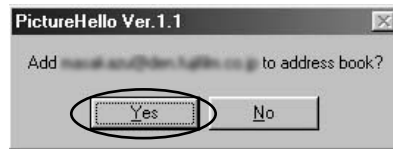
Ending a Call

Click the [End Call] button.



TIP

If you call someone who is not already listed in the Address Book, a dialog box appears when the call ends asking you whether you would like to store the other party's details in the Address Book. Click the [Yes] button to store the information in the Address Book.



Ending the Videoconference

1. When you click the [Logout] button, the connection to the server is ended.



2. To exit PictureHello, click the [Close] button.



NOTE

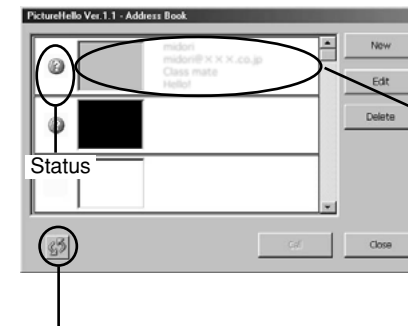
If you are using a dial-up connection, logging out does not disconnect you from the Internet. If you have finished using the Internet, disconnect manually.

Using the Address Book

You can use the address book to check the status of other parties and to store addresses. To view the address book, click the [Address Book] button.

Checking the status

Click the [Update Status] button to check the latest status details.



Click the [Capture] button to store or update.



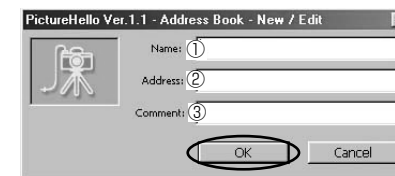
- ① Other party's name
- ② Other party's e-mail address
- ③ Comment (not seen by the other party)
- ④ Message written when the other party logged in

[Update Status] button

| Icon | Can be called? | Status of other party |
|------|----------------|--|
| | No | Not logged in. |
| | Yes | Logged in. |
| | No | Logged in but busy with another call. |
| | Unclear | Unclear. Click the [Update Status] button. |

Registering E-mail Addresses

To add a new address or edit an existing address, click the [New] or [Edit] button. Enter or modify each item and then click the [OK] button.



- ① Other party's name
- ② Other party's e-mail address
- ③ Comment (not seen by the other party)

Mastering FinePixViewer – Using Online Help –

For more information on FinePixViewer functions not fully explained in this manual, refer to “How to Use FinePixViewer” in the Help menu.

■ To read “How to Use FinePixViewer”...

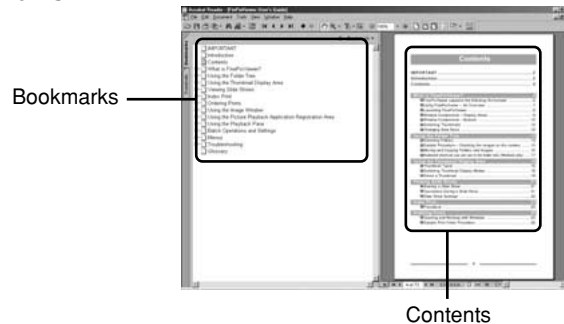
You must install Adobe Systems' Acrobat Reader. See P.25 (Windows) or P.34 (Macintosh) for information on installing Acrobat Reader.

■ What is explained in “How to Use FinePixViewer”...

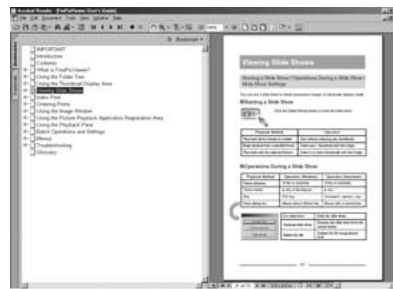
“How to Use FinePixViewer” covers a range of topics, including batch processing and ordering prints.

■ Example: Looking up slide shows

1. Click “How to Use FinePixViewer” in the FinePixViewer Help menu.
2. Search for relevant articles by clicking the corresponding items in the Help “Bookmarks” or “Contents”. Here, click “Viewing Slide Shows”.



3. The “Viewing Slide Shows” information is displayed. Press the “←” key to view the previous page or the “→” key to view the next page.



* For more information on using Acrobat Reader, refer to the Acrobat Reader “Help” menu.

Lights, Camera, Action! Using VideoImpression

You can use VideoImpression to make your own movies.

For more information on VideoImpression, refer to the contact information provided on the back cover of this manual.

Main Functions

- Allows you to create and save movies that include both still and moving images and sound.
- Allows you to edit your movies so you can cut unwanted scenes or add captions.
- Provides effective ways of switching from one scene to another (transitions)
- Connects in PC Camera mode to download live images.
 - * More information on these functions and how to use them is available as follows:
 - Open the “English.pdf” file on the enclosed CD-ROM.
Windows: Open “English.pdf” in the “Manual” folder inside “Vimpress” on the CD-ROM.
Macintosh: Go to “FinePix for Mac OS 8.6-9.x” → “VideoImpression” → “MANUAL” on the CD-ROM and read the “English.pdf” file.
 - Check on the Internet by clicking the link in the bottom right corner of the screen.
 - Use the contact details printed on the back cover.

The main steps in the procedure are as follows:

- 1 Launch VideoImpression.
- 2 Store your movie in an album.
- 3 Add a storyboard.
- 4 Edit the movie.
- 5 Play back and check the edited movie.
- 6 Save the edited movie.

Making Your Own Movies

■ Store the movie in an album

To work with still images, video and sound, you first have to import them into the album window.

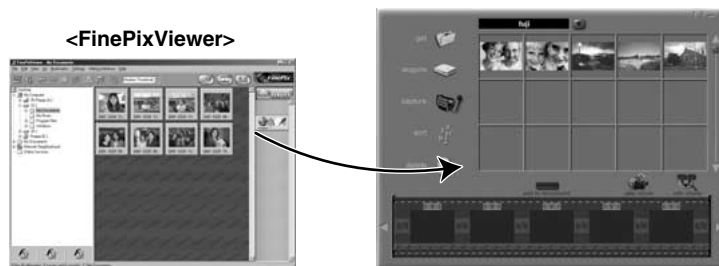
1. Launch VideoImpression.

| | |
|-------------------|--|
| Windows | In the "Start" menu, click "Programs" → "ArcSoft VideoImpression" → "ArcSoft VideoImpression 1.6FP". |
| Mac OS 8.6 to 9.2 | Double-click the "VideoImpression 1.6FP" icon in the folder where the software was installed. |

2. Click the [new] button to open an album window.



3. Drag the thumbnails from FinePixViewer and drop them into the album window.



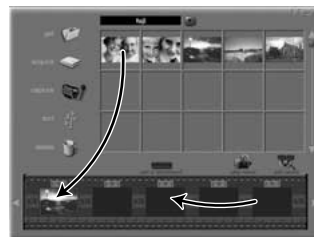
■ Add a storyboard

In the storyboard, you select the files to be used in the movie and set the order in which the files are played.



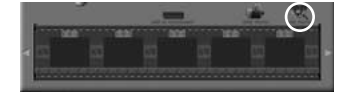
1. Add files to the movie by dragging them from the album window and dropping them onto the storyboard.

2. If necessary, you can drag items around in the storyboard to change the playback sequence.




■ Add text

1. Click the [edit movie] button to switch to the editing window.



2. Click the [text] button and enter the text.

 You can use the drag handle to adjust the position.



3. Use the buttons below the image to specify settings such as the typeface and the time for which the text appears.

■ Play back and save the movie

1. Click the [play movie] button to switch to the playback window.



2. Click the [Play] button and check the movie.



3. When you click the [save] button, the Save dialog box appears. Specify the save location, file name, etc. and save the movie file.

TIP

- If you leave the mouse pointer positioned over a button or image for a few seconds, information about that button or image is displayed.
- In any window, you can access the online help by clicking "?".
- In addition to "MPEG", you can choose from a wide range of formats for saved files.

The procedure for capturing live images differs depending on the operating system you are using.

Windows → P.86

Mac OS 8.6 to 9.2 → P.88

Capturing Live Images (Windows)

If your camera has a PC Camera function, you can download live images to your PC.

1. **Connect the camera to your PC in “PC Camera” mode.**

See “Connection” in the camera Owner’s Manual.

NOTE

- Always use the correct procedure when disconnecting the camera from your PC or switching the camera off.
- Do not perform any of the following when the camera is connected to a PC as this may cause the PC to hang:
Disconnect the USB cable or AC power adapter / Touch the camera controls (power switch, control buttons, lens cover or slot cover)

2. **If FinePixViewer starts up, quit FinePixViewer.**
3. **In the “Start” menu, select “Programs” → “ArcSoft VideoImpression” → “ArcSoft VideoImpression 1.6FP”.**
4. **When the startup screen appears, click the [new] button.**

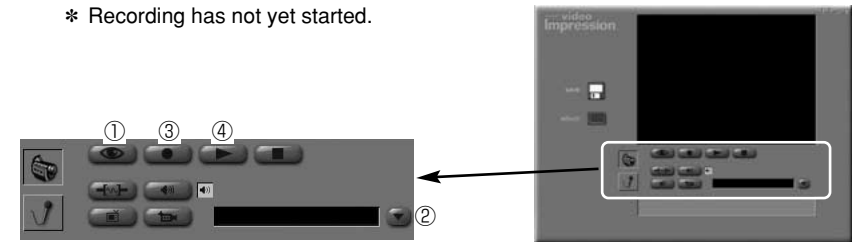


5. **When the album window opens, click the [capture] button.**



6. **Display switches to the capture window and the live image is displayed. If the live image does not appear, click the [Live] button ①.**

* Recording has not yet started.



7. **Use the [Drives] button ② to select “USB PC Camera”.**

TIP

To rotate a live image, click the “Source” button and specify a rotation angle in the “Roll” setting in the “Camera Controls” tab sheet.

8. **Click the [Record] button ③ to start recording.**
9. **Click the [Record] button ③ again to end recording.**

* The recorded images are not saved to a file.

■ To check the images

Click the [Play] button ④.

■ To save the images to a file and return to the Album window

1. **When you click the [album] button, the Save dialog box opens. Specify the save destination and click the [OK] button.**
2. **When the album storage confirmation dialog box appears, click the [OK] button.**

Capturing Live Images (Mac OS 8.6 to 9.2)

If your camera has a PC Camera function, you can download live images to your Macintosh.

1. Switch the camera on and select “PC CAM” as the USB setting.

See “Connection” in the camera Owner’s Manual.

2. Connect the camera to your Macintosh.

NOTE

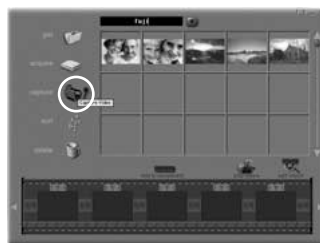
- Always use the correct procedure when disconnecting the camera from your Macintosh or switching the camera off.
- Do not perform any of the following when the camera is connected to a Macintosh as this may cause the Macintosh to freeze:
Disconnect the USB cable or AC power adapter / Touch the camera controls (power switch, control buttons, lens cover or slot cover)

3. Double-click the “VideoImpression 1.6FP” icon in the installation folder.

4. When the startup screen appears, click the [new] button.



5. When the album window opens, click the [capture] button.



6. The Capture window appears and the live image is displayed.

* Recording has not yet started.

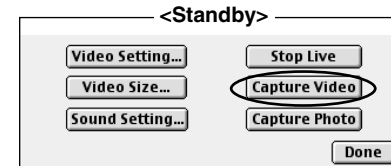
TIP

To rotate a live image, click the “Source” button and specify a rotation angle in the “Roll” setting in the “Camera Controls” tab sheet.



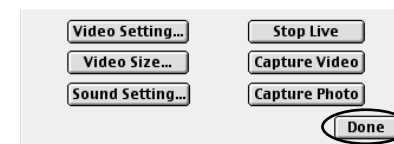
7. Click the [Capture Video] button to begin recording the movie.

The name of the button changes to [Stop Capture]. During recording, only the [Stop Capture] button can be pressed.



8. Click the [Stop Capture] button to stop recording. The movie data will be automatically saved to a file and imported to the Album.

9. Click the [Done] button to return to the Album window.



NOTE

- You must have a sound card installed and speakers and a microphone connected to your Macintosh to input and output sound.
- The time required for playing and saving images varies depending on the performance of your Macintosh.
- Do not perform any of the following while live camera images are being displayed as this could cause your Macintosh to freeze:
Switch off the camera/Touch any of the control buttons on the camera/ Disconnect the USB cable/Remove the SmartMedia/Open the SmartMedia cover/ Remove the camera battery/Put your Macintosh to sleep.

■ Disconnecting the Camera from your Macintosh

1. Exit “VideoImpression”. If you are using any other applications that display live images, exit those applications also.

2. Switch the camera off.

See “Connection” in the camera Owner’s Manual.

Uninstalling the Software

Only perform this operation when you no longer require the installed software.

Windows

1. Switch on your PC.
2. Disconnect the camera.
3. Quit all currently running applications.
4. Close all files.
5. Open the “My Computer” window and double-click “Add/Remove Programs” in the Control Panel.

See “Connection” in the camera Owner’s Manual.



6. The “Add/Remove Programs Properties” window appears. Select the software to be uninstalled (FinePixViewer or the driver) and then click the [Add/Remove] button.

<To remove FinePixViewer>

FinePixViewer Ver.3.1

<To remove the driver software>

FUJIFILM USB Driver



7. When the confirmation message appears, click the [OK] button. Check your selection carefully since the process cannot be cancelled once you click [OK].



8. Automatic uninstallation begins. When uninstallation ends, click the [OK] button.

NOTE

Only perform this operation when you no longer require the installed software or when the software was not installed correctly.

Uninstalling Mass Storage Driver and PC Camera Driver

1. Check that the camera is not connected to your Macintosh.
2. Drag all the files that begin with “USB04CB...” to the Trash.
3. Restart your Macintosh.
4. Select “Empty Trash” in the “Special” menu.

Uninstalling Exif Launcher, FinePixViewer and DP Editor

1. After you have quit Exif Launcher in “Exif Launcher Settings” in the FinePixViewer “Settings” menu, move the Exif Launcher file from the “Startup Items” folder in the System folder to the Trash. Then select “Empty Trash” in the “Special” menu.
2. After you have exited FinePixViewer and DP Editor and then drag the installed FinePixViewer folder to the Trash. Then click “Empty Trash” in the “Special” menu.

Uninstalling FinePixViewer

Quit FinePixViewer and DP Editor. Then drag the installed FinePixViewer folder to the Trash and select “Empty Trash” from the “Special” menu.

When you have a problem

My computer doesn't recognize the camera.

- I can't see the files on the SmartMedia.
- I can't see the removable disk icon.
- I can't shoot live images.

Was installation completed normally?

| | |
|--------------------------------|------|
| Reinstall the software. | |
| Windows..... | P.11 |
| Mac OS 8.6 to 9.2 | P.27 |
| Mac OS X..... | P.35 |

- Is the camera switched on?
- Are the batteries dead?
- Are the cables connected securely?
- Is there a SmartMedia loaded in the camera?

Read the Owner's Manual for the camera and load the SmartMedia correctly.

When I disconnect the camera from the computer...

- A warning appears on the computer.
- My computer doesn't operate normally.

Did you follow the correct procedures before disconnecting the camera?

| | |
|--|------|
| Carry out the correct procedures for the operating system running on your computer before disconnecting the camera. | |
| Windows..... | P.20 |
| Mac OS 8.6 to 9.2 | P.33 |
| Mac OS X..... | P.40 |

Have you resolved the problem?

If not, go to “Troubleshooting”.

| | |
|-----------------|-------|
| Windows | P.94 |
| Macintosh | P.103 |

Troubleshooting (Windows)

If the software does not operate correctly but the problem does not match any of those listed below, check that you are using the correct hardware and software (→ P.12).

If the problem persists even though you are using the correct hardware and software, refer to the table below and then see the reference page listed for your problem.

| Problem with | Problem | Page |
|--|---|--|
| Connection | I was asked for the disk labeled "Windows" the first time I connected the camera to my PC. | 95 |
| | When I connect the camera to my PC, the "Add New Hardware Wizard" appears. | |
| | When I double-click the removable disk icon, "The device is not ready" error message appears. | |
| | A warning message appeared when I disconnected the camera from my PC. | |
| | My PC doesn't recognize the camera (I can't use the camera from my PC). | 96 |
| | A "Device eject warning" appeared. | |
| | FinePixViewer automatic startup is slow. | 97 |
| | When I disconnect the special USB cable and double-click the removable disk icon, a message appears and the window does not open. | |
| | The PC hangs when I access the SmartMedia. | |
| | Videoconferencing | The PictureHello (videoconferencing) window does not open. |
| PictureHello (videoconferencing) does not show video of me. | | |
| The live image of the other party in videoconferencing is very jerky. | | 99 |
| I clicked the [Login] button in PictureHello (videoconferencing), but I can't log in. | | |
| There is no live image of the other party during videoconferencing. | | |
| Videoconferencing call notifications are not displayed. | | |
| I can't hear the other party in the videoconference/The other party can't hear me. | | |
| I can make calls but I cannot use videoconferencing. | | 100 |
| I want to disable the Internet connection firewall so that I can use videoconferencing (Windows XP). | | |
| Other | Live images do not appear in the VideoImpression Capture window. | 101 |
| | I can't log in to the "FinePix Internet Service". | 102 |
| | I can't sign on as a "FinePix Internet Service" user. | |
| | My PC does not shut down correctly. | |
| | My camera will no longer play back image files. | |
| | I can't play AVI files on Windows Media Player. | |
| I can't update the Internet menu properly. (The buttons do not line up correctly.) | | |

Troubleshooting Connection Problems

■ I was asked for the disk labeled "Windows" the first time I connected the camera to my PC.

| Solution |
|---|
| ① Load the Windows CD-ROM into the CD-ROM drive. |
| ② Click the [Browse] button in the "Copy files" dialog box. |
| ③ In the dialog box that then appears, select the CD-ROM icon in the drive display area, refer to the information in the table below and specify the appropriate folder and then click the [OK] button. |
| ④ In the "Copy files" dialog box, click the [OK] button to install the driver. Then click the [Finish] button. |

| OS Type | Name of Folder | * When using CD-ROM Drive D |
|---------------------------|----------------|-----------------------------|
| Windows 98 | D:\win98 | |
| Windows Me | D:\win9x | |
| Windows 2000 Professional | D:\i386 | |
| Windows XP | D:\i386 | |

NOTE

If no Windows CD-ROM was supplied with your PC, contact your PC manufacturer.

■ When I connect the camera to my PC, the "Add New Hardware Wizard" appears.

| Possible cause | Solution |
|-----------------------------|--|
| Is FinePixViewer installed? | Use the enclosed CD-ROM to install FinePixViewer (→ P.11). |

■ When I double-click the removable disk icon, "The device is not ready" error message appears.

| Possible cause | Solution |
|---|---|
| Is the SmartMedia loaded in the camera? | Load a SmartMedia into the camera. For more information, refer to the Owner's Manual for your camera. |

■ A warning message appeared when I disconnected the camera from my PC.

| Possible cause | Solution |
|---|--|
| Did you disconnect the camera while the camera and PC were communicating? | Disconnecting the camera while it is still mounted can corrupt the data on the SmartMedia or damage the SmartMedia itself. Always check that all the files on the camera (on the removable disk) are closed and that the camera and PC are no longer communicating before you disconnect the camera. |

■ My PC doesn't recognize the camera (I can't use the camera from my PC).

| Possible cause | Solution |
|---|---|
| Is the camera switched on? | Switch the camera on. See "Connection" in the camera's Owner's Manual for details. |
| Is the special USB cable connected to the camera and to the computer? | Check that one end of the special USB cable is connected to the camera and the other end is connected to the computer. |
| Did you select the correct connection mode for what you want to do? | <ul style="list-style-type: none"> To check the images on the SmartMedia, use "DSC" connection mode. For videoconferencing or to download live images, use "PC Camera" connection mode. |
| Are you using a compatible operating system? | Run the software on Windows 98, 98 SE, Me, 2000 Professional or XP. |
| Are "PC Camera Driver" and "Mass Storage Driver" not listed under "Other Devices" in the Device Manager? | The drivers are not installed correctly. Uninstall (→ P.91) and then re-install drivers. |
| Are the USB functions active? Double-click "System" in the Control Panel, select "Device Manager" and check "Universal Serial Bus controllers". | <ul style="list-style-type: none"> If "Universal Serial Bus controllers" is not displayed, the USB functions is disabled. Refer to the User's Manuals supplied with your PC for details of how to enable the USB functions. USB functions are disabled when the item is marked with a yellow exclamation mark "!" or red cross "x". Refer to the User's Manuals supplied with your PC for details of how to enable the USB functions. |

■ A "Device eject warning" appeared.

| Possible cause | Solution |
|---|---|
| Are you using Windows 2000 Professional, Windows XP or Windows Me? | <ol style="list-style-type: none"> Click the "Unplug or Eject Hardware" icon in the taskbar and eject "USB Mass Storage" or "USB Disk". Switch the camera off and then disconnect it. |
| Did you right-click the removable disk icon and then click "Eject"? | <p>On Windows 2000 Professional, windows XP or Windows Me, use the following procedure when removing the camera:</p> <ol style="list-style-type: none"> Click the "Unplug or Eject Hardware" icon in the taskbar and eject "USB Mass Storage" or "USB Disk". Switch the camera off and then disconnect it. |

■ FinePixViewer automatic startup is slow.

| Possible cause | Solution |
|---|---|
| Are you running too many background applications? | Click the [Start] button and select "Programs" → "Startup" from the Start menu. Click the right mouse button on any shortcuts for infrequently used applications from the "Startup" window. Click "Delete" from the pop-up menu and then restart your PC. |

■ When I disconnect the special USB cable and double-click the removable disk icon, a message appears and the window does not open.

| Possible cause | Solution |
|---|---|
| Is another USB removable drive connected? | Some USB removable drives do not operate correctly if other USB removable drives are being used at the same time. Disconnect all the connected USB removable drives and then connect the camera. However, with some USB storage devices, computer operation may become unstable when the Exit Launcher is resident. See "Changing the Automatic Launch Settings" (→ P.48, 49) and try removing the Exit Launcher. |

■ The PC hangs when I access the SmartMedia.

| Possible cause | Solution |
|---|---|
| When opening the "Device Manager", there is a yellow "!" mark next to the driver in "Universal Serial Bus controllers". | You are using a driver or camera that prevents the driver for the Universal Serial Bus controllers from operating. Refer to the User's Manual for your PC and check your hardware and software setup. |
| When opening the "Device Manager", there is a yellow "!" mark next to "USB Mass Storage". | You are using a driver or camera that prevents the Mass Storage Driver from operating. Re-install FinePixViewer from the CD-ROM provided. |

Troubleshooting Videoconferencing Problems

■ The PictureHello (videoconferencing) window does not open.

| Possible cause | Solution |
|---|--|
| Is FinePixViewer installed? | Install FinePixViewer and NetMeeting 3.01 from the enclosed CD-ROM (→ P.11). |
| Is FinePixViewer running? | In the "Start" menu, select "Programs" → "FinePixViewer" and click "FinePixViewer". |
| Is the camera switched on? | Switch the camera on. For more information on "Connection", refer to the camera's Owner's Manual. |
| Is "PC CAM" selected as the USB setting on the camera? | Disconnect the camera briefly and change the USB setting to "PC CAM". For more information on "Connection", refer to the camera's Owner's Manual. |
| Is the special USB cable connected to the camera and to the computer? | Check that one end of the special USB cable is connected to the camera and the other end is connected to the computer. |
| Are you using a compatible operating system? | Use Windows 98, Windows 98 SE, Windows Me, Windows 2000 Professional or Windows XP. |
| Is the PC Camera Driver running? | Double-click "System" in the Control Panel, select the Device Manager and check "USB PC Camera" in "Imaging" or "Other Devices". If "USB PC Camera" is marked with a yellow exclamation mark "!" or a red cross "x", it is not running. Re-install FinePixViewer from the CD-ROM provided. |

■ PictureHello (videoconferencing) does not show video of me.

| Possible cause | Solution |
|--|---|
| Is another video input device connected to your PC? | Disconnect all other video input devices. |
| Is another application displaying the live images from the camera? | Quit any other application that is displaying live images. |
| Did you disconnect the special USB cable or switch off the camera during live image display? | ① Exit PictureHello and restart your PC. ② Select "PC CAM" as the USB setting on the camera. ③ Connect the camera to your PC correctly using the special USB cable. |

■ The live image of the other party in videoconferencing is very jerky.

| Solution |
|---|
| Use a high-speed line with a connection speed of 56 kbps or better. |

■ I clicked the [Login] button in PictureHello (videoconferencing), but I can't log in.

| Possible cause | Solution |
|---|--|
| Are you able to connect to the Internet? | Check your PC hardware and software setup. |
| Is the FinePix Internet Service undergoing maintenance? | Log in after the maintenance is completed. |
| Have you completed the user registration process? | Click the FinePixViewer [Register Now] button and sign on as a "FinePix Internet Service" user (→ P.66). |

■ There is no live image of the other party during videoconferencing.

| Possible cause | Solution |
|---|--|
| Are you or the other party trying to call outside from an in-house LAN? | Calls cannot be made in either direction between a LAN and an external line. Use a dial-up connection. |
| Are you or the other party trying to call outside from a home-office LAN? | Calls cannot be made in either direction between a LAN and an external line. Use a dial-up connection. |

■ Videoconferencing call notifications are not displayed.

| Possible cause | Solution |
|---|---|
| Is the "Automatically accept incoming calls" checkbox ticked? | Uncheck the "Automatically accept incoming calls" checkbox. |
| Are you logged in to the server? | Log in to the server. |

■ I can't hear the other party in the videoconference/The other party can't hear me.

| Possible cause | Solution |
|--|---|
| Are the speakers set to playback mode? | You and the other party should use the following procedure to check the speaker setup: ① Check that the speakers are connected correctly to your PC. ② In the "Start" menu, select "Programs" → "Accessories" → "Entertainment" and click "Volume Control". Then adjust the volume. |
| Is the microphone operating normally? | You and the other party should use the following procedure to check the microphone setup: ① Check that the microphone is connected correctly to your PC. ② In the "Start" menu, select "Programs" → "Accessories" → "Entertainment" and click "Sound Recorder". Then adjust the microphone input level. |

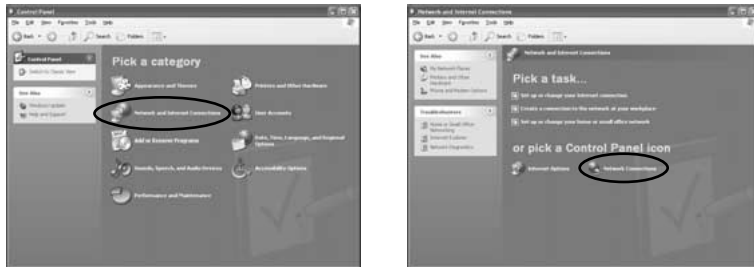
■ I can make calls but I cannot use videoconferencing.

| Possible cause | Solution |
|---|---|
| Is the other party able to make or accept calls? | Open the address book and click the [Update Status] button. If the other party cannot accept calls, try again later (→ P.81). |
| Are you or the other party trying to call outside from an in-house LAN? | Calls cannot be made in either direction between a LAN and an external line. Use a dial-up connection. |
| Are you or the other party trying to call outside from a home-office LAN? | Calls cannot be made in either direction between a LAN and an external line. Use a dial-up connection. |

■ I want to disable the Internet connection firewall so that I can use videoconferencing (Windows XP).

Solution

- Click [Start] button → “Control Panel” → “Network & Internet Connections” → “Network Connections”.
* The details shown on the screen differ depending on your PC settings. In the example shown below, the default values are used for all settings.



- Right-click the desired connection and then click “Properties”.



- Clear the “Protect my computer and network by limiting or preventing access to this computer from the Internet” checkbox in the “Advanced” tab and then click the [OK] button.

* Once you clear this checkbox, the computer and network are no longer protected against external access. When you are not using videoconferencing, you should restore the original setting.



Troubleshooting Other Problems

■ Live images do not appear in the VideoImpression Capture window.

| Possible cause | Solution |
|--|--|
| Do you have Windows Media Player installed? | Install Windows Media Player from the enclosed CD-ROM (→ P.11). |
| Is “PC CAM” selected as the USB setting on the camera? | Disconnect the camera briefly and change the USB setting to “PC CAM”. For more information on “Connection”, refer to the camera’s Owner’s Manual. |
| Is the special USB cable connected to the camera and your PC? | Check that one end of the special USB cable is connected to the camera and the other end is connected to your PC. |
| Are you using a compatible operating system? | Use Windows 98, Windows 98 SE, Windows Me, Windows 2000 Professional or Windows XP. |
| Is the PC Camera Driver running? | Double-click “System” in the Control Panel, select the Device Manager and check “USB PC Camera” in “Imaging” or “Other Devices”. If “USB PC Camera” is marked with a yellow exclamation mark “!” or a red cross “x”, it is not running. Re-install FinePixViewer from the CD-ROM provided. |
| Is another video input device selected? | Select “USB PC Camera”. Refer to the VideoImpression User’s Guide for information on how to select the video input device. |
| Is another application displaying the live images? | Quit any other application that is displaying live images. |
| Did you disconnect the special USB cable or switch off the camera during live image display? | <ol style="list-style-type: none"> Exit VideoImpression and restart your PC. Select “PC CAM” as the USB setting on the camera. Connect the camera to your PC correctly using the special USB cable. |

■ I can't log in to the "FinePix Internet Service".

| Possible cause | Solution |
|---|--|
| Are you able to connect to the Internet? | Check your PC hardware and software setup. |
| Is the FinePix Internet Service undergoing maintenance? | Log in after the maintenance is completed. |
| Have you completed the user registration process? | Click the FinePixViewer [Register Now] button and sign on as a "FinePix Internet Service" user (→ P.66). |

■ I can't sign on as a "FinePix Internet Service" user.

| Possible cause | Solution |
|---|---|
| Have you already signed on under the same e-mail address? | You cannot sign on twice with the same user ID or e-mail address. |

■ My PC does not shut down correctly.

| Solution |
|---|
| Disconnect the PC and the camera using the correct procedure and then exit Windows. |

☞ Some types of PC may not shut down correctly while the camera is still connected.

■ My camera will no longer play back image files.

| Possible cause | Solution |
|---|--|
| Did you rename any files or folders inside the "DCIM" folder? | Change the file or folder names in the "DCIM" folder back to the original names. |
| Did you replace an image file inside the "DCIM" folder? | Do not replace image files in the "DCIM" folder. |

■ I can't play AVI files on Windows Media Player.

| Solution |
|---|
| If you want to use Windows Media Player, you must install DirectX 8.0. Refer to the Microsoft homepage or industry-related magazines for details of how to acquire DirectX 8.0. |

■ I can't update the Internet menu properly. (The buttons do not line up correctly.)

| Solution |
|--|
| The menu data is corrupted. Use the procedure below to update the menu: ① Quit FinePixViewer. ② From the "Start" menu, select "FinePixViewer" in "Programs". Then right-click on the "FinePixViewer" icon and select "Properties". ③ Click the [Find link destination] button to display the folder in which FinePixViewer was installed. ④ Delete the "FinePixInternetFiles" folder in the FinePixViewer installation folder. ⑤ Launch FinePixViewer and click "Menu Update" in the "View" menu. |

Troubleshooting (Macintosh)

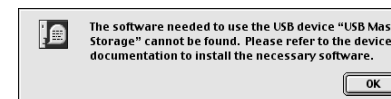
If the software does not operate correctly but the problem does not match any of those listed below, check that you are using the correct hardware and software (→ P.28, 36).

If the problem persists even though you are using the correct hardware and software, refer to the table below and then see the reference page listed for your problem.

| Problem with | Problem | Page |
|----------------------------|---|------|
| Connection • Image Viewing | When I connected the camera to my Macintosh, the "Required software not found" message or "Required driver cannot be used" message appears. | 103 |
| | When I connected the USB cable, Mac OS displayed the "Initialize disk?" message. | 104 |
| | The Macintosh hangs when I access the SmartMedia. | |
| | The camera and Macintosh are connected but no removable disk icon is displayed. | |
| Internet | A warning message appears when I disconnect the USB cable from the camera. | 105 |
| | I can't log in to the "FinePix Internet Service". | |
| | I can't sign on as a "FinePix Internet Service" user. | |
| Other | I can't update the Internet menu properly. (The buttons do not line up correctly.) | 106 |
| | The "The tool could not be executed" message appears. | |
| | Thumbnails are not displayed in CD Album (they appear as "?"). | |
| | Live images do not appear in the VideoImpression Capture window. | |
| | My camera will no longer play back image files. | |
| | I want to stop the FinePixViewer from launching automatically. | 107 |

Troubleshooting Connection and Image Viewing Problems

■ When I connected the camera to my Macintosh, the "Required software not found" message or "Required driver cannot be used" message appears.



| Possible cause | Solution |
|----------------------------|---|
| Is the software installed? | Install the software on your Macintosh. |

■ When I connected the USB cable, Mac OS displayed the “Initialize disk?” message.

| Possible cause | Solution |
|---|---|
| Is the SmartMedia formatted? | Disconnect the USB cable from the camera, insert the SmartMedia into the camera and format the SmartMedia. For more information, refer to the Owner’s Manual for your camera. |
| Mac OS 8.6–9.2 only Is File Exchange enabled? | Enable File Exchange (→ P.29). |

■ The Macintosh hangs when I access the SmartMedia.

| Possible cause | Solution |
|----------------------------|---|
| Is the software installed? | Install the software on your Macintosh. |

■ The camera and Macintosh are connected but no removable disk icon is displayed.

| Possible cause | Solution |
|---|--|
| Is the camera switched on? | Switch the camera on. For more information on “Connection”, refer to the camera’s Owner’s Manual. |
| Is the SmartMedia loaded in the camera? | Load a SmartMedia into the camera. For more information, refer to the Owner’s Manual for your camera. |
| Is “DSC” selected as the USB setting on the camera? | Disconnect the camera briefly and change the USB setting to “DSC”. For more information on “Connection”, refer to the camera’s Owner’s Manual. |
| Is the special USB cable connected to the camera and to the computer? | Check that one end of the special USB cable is connected to the camera and the other end is connected to the Macintosh. |
| Are you using a compatible operating system? | Use Mac OS 8.6 to 9.2 or Mac OS X (version 10.1.3). Note that the driver software does not run correctly in the Mac OS X Classic environment. |
| Mac OS 8.6–9.2 only Is the Mass Storage Driver active? | Enable all the files that begin with “USB04CB” in the Extensions Manager and then restart your Macintosh. |

■ A warning message appears when I disconnect the USB cable from the camera.

| Possible cause | Solution |
|---|---|
| Did you remove the camera while the camera was still mounted as a disk drive? | Disconnecting the camera while it is still mounted can corrupt the data on the SmartMedia or damage the SmartMedia itself. Drag the drive icon to the Trash before you disconnected the camera. |

Troubleshooting Internet Problems

■ I can’t log in to the “FinePix Internet Service”.

| Possible cause | Solution |
|---|--|
| Are you able to connect to the Internet? | Check your Macintosh hardware and software setup. |
| Is the FinePix Internet Service undergoing maintenance? | Log in after the maintenance is completed. |
| Have you completed the user registration process? | Click the FinePixViewer [Register Now] (Mac OS 8.6–9.2) / [user’s registration] (Mac OS X) button and sign on as a “FinePix Internet Service” user (→ P.66, 72). |

■ I can’t sign on as a “FinePix Internet Service” user.

| Possible cause | Solution |
|---|---|
| Have you already signed on under the same e-mail address? | You cannot sign on twice with the same user ID or e-mail address. |

■ I can’t update the Internet menu properly. (The buttons do not line up correctly.)

| Solution |
|--|
| <p>The menu data is corrupted. Use the procedure below to update the menu:</p> <ol style="list-style-type: none"> ① Quit FinePixViewer. ② Delete the menu data in the following locations: <ul style="list-style-type: none"> Mac OS 8.6–9.2 The “FinePixInternetFiles” folder inside “Preferences” in the System Folder. Mac OS X “FinePixInternetFile” folder in “Users” → “(user name)” → “Library” → “Preferences”. ③ Launch FinePixViewer and click “Menu Update” in the “View” menu. |

Troubleshooting Other Problems

■ The “The tool could not be executed” message appears.

Mac OS 8.6–9.2

| Possible cause | Solution |
|--|---|
| Do you have enough system memory installed? | <ol style="list-style-type: none"> ① Quit any other applications that are running. ② Open the [Control Panels] → [Memory] and increase the amount of virtual memory allocated. Then restart your Macintosh. |

■ Thumbnails are not displayed in CD Album (they appear as “?”).

Mac OS 8.6–9.2

| Solution | |
|--|-------------------------|
| <ol style="list-style-type: none"> ① Click images without thumbnails from FinePixViewer. ② Check the number of pixels in the information display at the bottom of the window. ③ Double-click “HELPERS” in “EXTENSIONS” in the FinePixViewer installation folder to open the “HELPERS” folder and then select the “FPVCDBK” file. ④ Click “Get Info” in the “File” menu to view the “FPVCDBK Info”. ⑤ Select “Memory” in the “Show” pop-up menu. ⑥ In “Minimum Size:” in “Memory Requirements”, allocate the memory size shown in the table below for the number of pixels shown in step 2. | |
| No. of image pixels | Required minimum memory |
| 3040 × 2016 pixels or less | 20480 |
| 4256 × 2848 pixels or less | 40960 |

■ Live images do not appear in the VideoImpression Capture window.

| Possible cause | Solution |
|---|--|
| Is the camera switched on? | Switch the camera on. See “Connection” in the camera’s Owner’s Manual for details. |
| Is “PC CAM” selected as the USB setting on the camera? | Disconnect the camera briefly and change the USB setting to “PC CAM”. See “Connection” in the camera’s Owner’s Manual for details. |
| Is the special USB cable connected to the camera and your Macintosh? | Check that one end of the special USB cable is connected to the camera and the other end is connected to your Macintosh. |
| Are you using a compatible operating system? | The USB Driver should be used with Mac OS 8.6 to 9.2. (It is not compatible with Mac OS X.) |
| Is PC Camera Driver enabled? | Enable “USB04CB_VcShim” and “USB04CB_VcDriver” in the Extensions Manager and restart your Macintosh. |

| Possible cause | Solution |
|---|--|
| Is another video input device selected? | Select “USB PC Camera”. Refer to the VideoImpression User’s Guide for information on how to select the video input device. |
| Is another application displaying the live images from the camera? | Quit any other application that is displaying live images. |
| Did you disconnect the special USB cable or switch off the camera during live image display? | <ol style="list-style-type: none"> ① Exit VideoImpression and restart your Macintosh. ② Select “PC CAM” as the USB setting on the camera. ③ Connect the camera to your Macintosh correctly using the special USB cable. |

■ My camera will no longer play back image files.

| Possible cause | Solution |
|--|--|
| Did you rename any files or folders inside the “DCIM” folder? | Change the file or folder names in the “DCIM” folder back to the original names. |
| Did you replace an image file inside the “DCIM” folder? | Do not replace image files in the “DCIM” folder. |

■ I want to stop the FinePixViewer from launching automatically.

| Solution |
|---|
| <p>You can use either of the two methods below to prevent FinePixViewer from launching automatically.</p> <ul style="list-style-type: none"> • Change the Exif Launcher settings <ol style="list-style-type: none"> ① Select “Exif Launcher Settings” in the FinePixViewer “Settings” menu and click “Do not run Exif Launcher at restart.” ② Restart your computer. <p>* To restore the original setting, use the same procedure and tick the “Run Exif Launcher at restart.” option.</p> • Remove Exif Launcher <ol style="list-style-type: none"> ① Select “Exif Launcher Settings” in the FinePixViewer “Settings” menu and tick “Quit Exif Launcher immediately”. ② Move “Exif Launcher” from the “Startup Items” folder in the System folder to the Trash. ③ Select “Empty Trash” in the “Special” menu. <p>* To restore Exif Launcher, re-install the software.</p> |

For inquiries regarding VideoImpression™

Technical Support Information

The following is a list of ArcSoft regional offices around the world. If you have any questions regarding our products, or need technical support, please contact the office that is closest to you.

[Area]

North America and others

46601 Fremont Blvd.
Fremont, CA 94538
Tel: 1-510-440-9901
Fax: 1-510-440-1270
Web: www.arcsoft.com
E-Mail: support@arcsoft.com

Europe

Unit 14, Shannon Industrial Estate
Shannon, Co. Clare, Ireland
Tel: +353 (0) 61-702087
Fax: +353 (0) 61-702001
E-Mail: europe@arcsoft.com

China

ArcSoft Beijing Representative Office
No 6 South Capital Gym Rd.
Beijing New Century Hotel, #1910
Beijing 100044, P.R. China
Tel: +86-10-6849-1368
Fax: +86-10-6849-1367
E-Mail: China@arcsoft.com

Taiwan

ArcSoft Taiwan Representative Office
1, 5th Floor
164 North Fu Shin Road
Taipei, Taiwan
Tel: 886-2-2719-0225
Fax: 886-2-2719-0256

Australia

Marketing Results Prop Ltd.
P.O. Box 6246 BHBC
Baulkham Hills,
New South Wales 2153
Australia
Tel: +61 (2) 9899-5888
Fax: +61 (2) 9899-5728
E-Mail: david@mresults.ba.aust.com
Web site: www.marketingresults.com.au



FUJI PHOTO FILM CO., LTD.

26-30, Nishiazabu 2-chome, Minato-ku, Tokyo 106-8620, Japan

Printed on recycled paper.

Printed in Japan

FGS-204104-FG

Download from Www.Somanuals.com. All Manuals Search And Download.

Free Manuals Download Website

<http://myh66.com>

<http://usermanuals.us>

<http://www.somanuals.com>

<http://www.4manuals.cc>

<http://www.manual-lib.com>

<http://www.404manual.com>

<http://www.luxmanual.com>

<http://aubethermostatmanual.com>

Golf course search by state

<http://golfingnear.com>

Email search by domain

<http://emailbydomain.com>

Auto manuals search

<http://auto.somanuals.com>

TV manuals search

<http://tv.somanuals.com>