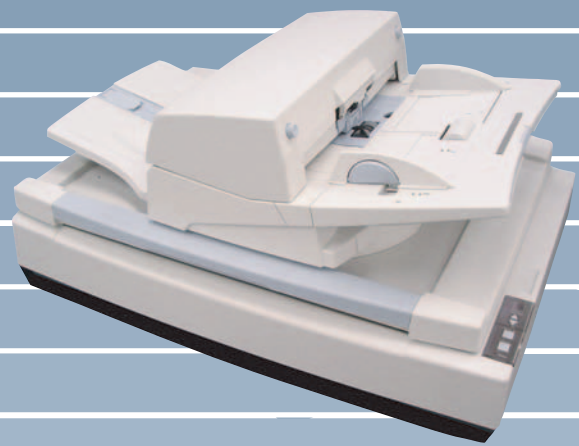




P3PC-E737-02EN

fi-5750C Image Scanner

Getting Started



FUJITSU

■ Introduction

Thank you for purchasing the fi-5750C Duplex Color Scanner product.

This document describes how to handle fi-5750C Duplex Color scanner and basic operation methods. Before you start using fi-5750C Duplex Color scanner, be sure to thoroughly read this manual to ensure correct use.

The “Operator’s Guide” is guide is stored on the User Manual CD-ROM. The guide provides useful and detailed information on operation, daily care, replacement of consumables and trouble shooting, etc. Please also read the Operator’s Guide for your reference.

■ Regulatory Information

FCC declaration

This equipment has been tested and found to comply with the limits for a Class B digital device, pursuant to Part 15 of the FCC Rules. These limits are designed to provide reasonable protection against harmful interference in a residential installation. This equipment generates, uses, and can radiate radio frequency energy and, if not installed and used in accordance with the instruction manual, may cause harmful interference to radio communications. However, there is no guarantee that interference will not occur in a particular installation. If this equipment does cause harmful interference to radio or television reception, which can be determined by turning the equipment off and on, the user is encouraged to try to correct the interference by one or more of the following measures:

- Reorient or relocate the receiving antenna.
- Increase the separation between the equipment and receiver.

- Connect the equipment into an outlet on a circuit different from that to which the receiver is located.
- Consult your dealer or an experienced radio/TV technician.

FCC warning: Changes or modifications not expressly approved by the party responsible for compliance could void the user’s authority to operate the equipment.



- The use of a shielded interface cable is required to comply with the Class B limits of Part 15 of FCC rules.
 - The length of the AC cable must be 3 meters (10 feet) or less.
-

Canadian DOC Regulations

This digital apparatus does not exceed the Class B limit for radio noise emissions from digital apparatus set out in the Radio interference Regulations of the Canadian Department of Communications.

This Class B digital apparatus complies with Canadian ICES-003.

Le présent appareil numérique n’émet pas de parasites radioélectriques dépassant les limites applicables aux appareils numériques de la classe B et prescrites dans le Règlement sur le brouillage radioélectrique dictées par le Ministère des Communications du Canada.

Cet appareil numérique de la classe B est conforme à la norme NMB-003 du Canada.

Bescheinigung des Herstellers / Importeurs

Für den fi-5750C wird folgendes bescheinigt:

- In Übereinstimmung mit den Bestimmungen der EN45014(CE) funkentstört .

-
- Maschinenlärminformationsverordnung 3. GPSGV: Der höchste Schalldruckpegel beträgt 70 dB (A) oder weniger, gemäß EN ISO 7779.

International ENERGY STAR® Program

As an ENERGY STAR® Partner, PFU LIMITED has determined that this product meets the ENERGY STAR® guidelines for energy efficiency.



The International ENERGY STAR® Office Equipment Program is an international program that promotes energy saving through the penetration of energy efficient computers and other office equipment. The program backs the development and dissemination of products with functions that effectively reduce energy consumption. It is an open system in which business proprietors can participate voluntarily. The targeted products are office equipment such as computers, monitors, printers, facsimiles, copiers, scanners, and multifunction devices. Their standards and logos are uniform among participating nations.

Use in High-safety Applications

This product has been designed and manufactured on the assumption that it will be used in office, personal, domestic, regular industrial, and general-purpose applications. It has not been designed and manufactured for use in applications (simply called "high-safety applications" from here on) that directly involve danger to life and health when a high degree of safety is required, for example, in the control of nuclear reactions at nuclear power facilities, automatic flight control of aircraft, air traffic control, operation control in mass-

transport systems, medical equipment for sustaining life, and missile firing control in weapons systems, and when provisionally the safety in question is not ensured. The user should use this product with adopting measures for ensuring safety in such high-safety applications. PFU LIMITED assumes no liability whatsoever for damages arising from use of this product by the user in high-safety applications, and for any claims or compensation for damages by the user or a third party.

About the use of mercury

The scanner lamp contains mercury.

To avoid unexpected injury, read the following carefully.

Doing the following actions may result in serious personal injuries:

- Do not put the substance in the lamp in your mouth as it contains mercury.
- Do not incinerate, crush, or shred the scanner.
- Do not breathe the chemical liquid contained in the scanner parts.

Disposing of the scanner should be conducted as required by local ordinances or regulations.

Trademarks

Microsoft, Windows, and Windows NT are registered trademarks of Microsoft Corporation in the United States and/or other countries. Adobe, the Adobe logo, and Acrobat are either registered trademarks of Adobe Systems Incorporated in the United States and/or other countries.

ISIS and QuickScan are trademarks or registered trademarks of EMC Corporation in the United States.

Other product names are the trademarks or registered trademarks of the respective companies.

How Trademarks Are Indicated In This Manual

References to operating systems (OS) are indicated as follows:

- Windows 95: Microsoft® Windows® 95 operating system.
- Windows 98: Microsoft® Windows® 98 operating system.
- Windows Me: Microsoft® Windows® Millennium Edition operating system.
- Windows 2000: Microsoft® Windows® 2000 Professional operating system.
- Windows XP: Microsoft® Windows® XP Professional operating system,
Microsoft® Windows® XP Home Edition operating system.
- Windows NT: Microsoft® Windows NT® Server operating system Version 4.0,
Microsoft® Windows NT® Workstation operating system Version 4.0.

Where there is no distinction between the different versions of the above operating system, the general term "Windows " is used.

Manufacturer

PFU LIMITED

International Sales Dept., Imaging Business Division, Products Group

Solid Square East Tower, 580 Horikawa-cho, Saiwai-ku, Kawasaki-shi Kanagawa 212-8563, Japan

Phone : (81-44) 540-4538

All Rights Reserved, Copyright© PFU LIMITED 2006.

■ Note, Liability

READ ALL OF THIS MANUAL CAREFULLY BEFORE USING THIS PRODUCT. IF THIS PRODUCT IS NOT USED CORRECTLY, UNEXPECTED INJURY MAY BE CAUSED TO USERS OR BYSTANDERS.

While all efforts have been made to ensure the accuracy of all information in this manual, PFU assumes no liability to any party for any damage caused by errors or omissions or by statements of any kind in this manual, its updates or supplements, whether such errors are omissions or statements resulting from negligence, accidents, or any other cause. PFU further assumes no liability arising from the application or use of any product or system described herein; nor any liability for incidental or consequential damages arising from the use of this manual. PFU disclaims all warranties regarding the information contained herein, whether expressed, implied, or statutory.

■ Preface

Safety Precautions

This manual describes important details for ensuring the safe and correct use of this product. Thoroughly read this manual before you start to use this product. In particular, be sure to read and fully understand the Safety Precautions described in this manual before you use this product.

Also, store this manual in a safe place so that it can be easily referred to during use of this product.

Warning Indications Used In This Manual

This manual uses the following indications to ensure safe and correct use of this product, and to prevent possible danger and injury to the operator and other persons.



This indication alerts operators to an operation that, if not strictly observed, may result in severe injury or death.



This indication alerts operators to an operation that, if not strictly observed, may result in safety hazards to personnel or damage to equipment.

Symbols Used In This Manual

This manual uses the following symbols in explanations in addition to warning indications.



This symbol alerts operators to particularly important information. Be sure to read this information.



This symbol alerts operators to helpful advice regarding operation.



A TRIANGLE symbol indicates that special care and attention is required.

The drawing inside the triangle shows the specific caution.



A CIRCLE with a diagonal line inside shows action which users may not perform.

The drawing inside or under the circle shows the specific action that is not allowed.



Outline characters on a colored background show instructions users should follow.

It may also include the drawing that shows the specific instruction.

Screen Examples In This Manual

The screen examples in this manual are subject to change without notice in the interest of product improvement.

If the actual displayed screen differs from the screen examples in this manual, operate by following the actual displayed screen while referring to the User's Manual of the scanner application you are using.

Furthermore, the screenshots in this manual are for FUJITSU TWAIN 32 scanner driver,

ScandAll 21 Image Capturing Utility Software, FUJITSU ISIS scanner driver, QuickScan™ image capturing software and Adobe Acrobat.

About Maintenance

The user must not perform repairs on this scanner.

Contact the store where you purchased the scanner or an authorized FUJITSU Image Scanner service provider to make repairs to this product.

■ Safety Precautions



The following describes important warnings described in this manual.

Do not touch the AC cable with wet hands.



Do not touch the power plug with wet hands. Doing so might cause electric shock.

Do not damage the AC cable.



A damaged AC cable may cause fire or electric shock.

Do not place heavy objects on AC cables, or pull, bend, twist, heat, damage or modify AC cables.

Also, do not use damaged AC cables or power plugs, and AC cables or power plugs when the wall socket is loose.

Use only specified AC cables and connector cables



Use only specified AC cables and connector cables. Failure to use the correct cables might cause electric shock and equipment failure.

Use this scanner only at the indicated power voltage. Do not connect to multiple-power strips.



Use this scanner only at the indicated power voltage and current. Improper power voltage and current might cause fire or electric shock.

Also, do not connect to multiple-power strips.

Wipe any dust from the power plug.



Wipe off any dust from metal parts on the power plug or metal fittings with a soft, dry cloth. Accumulated dust might cause fire or electric shock.

Do not install in locations subject to oil smoke, steam, humidity, and dust.



Do not install the scanner in locations subject to oil smoke, steam, humidity, and dust. Doing so might cause a fire or electric shock.

Do not use the scanner if you smell strange odor.



If you detect heat coming from the device or detect other problems such as smoke, strange smells or noises, immediately turn off the scanner and then disconnect its power plug.

Make sure that the smoking has stopped, and then contact the store where you bought the scanner or an authorized FUJITSU scanner service provider.

Turn the scanner OFF if it is damaged.



If the scanner is damaged for any reason, turn off the scanner and unplug the power cable before contacting the store where you purchased the scanner.

Do not put liquids inside the scanner.



Do not insert or drop metal objects into the scanner.
Do not scan wet documents or documents with paper clips or staples.
Do not splash or allow the scanner to get wet.



If foreign objects (water, small metal objects, liquids, etc.) get inside the scanner, immediately turn off the scanner and disconnect the power plug from the power outlet, then contact the store where you bought the scanner or the Maintenance Service Center.



Pay particular attention to this warning in households where there are small children.

Do not touch the inside of the scanner unless necessary.



Do not take apart or modify the scanner. The inside of the scanner contains high-voltage components. Touching these components might cause fire or electric shock.



The following describes important cautions described in this manual.

Do not install the scanner on unstable surfaces.



Install the scanner on a desk so that none of its parts protrude outside of the desktop. Also, make sure that the scanner is installed on a flat, level surface.



Do not install the scanner on unstable surfaces. Install the scanner on a level surface that is free of vibration to prevent it from falling.

Install the scanner on a strong surface that will support the weight of the scanner and other devices.

Firmly insert the power plug.



Firmly insert the power plug into the power outlet as far it can go.

Do not block the ventilation ports.



Do not block the ventilation ports. Blocking the ventilation ports generates heat inside of scanner, which may result in fire or scanner failure.

Do not place heavy objects or climb on top of the scanner.



Do not place heavy objects on the scanner or use the scanner's top surface for performing other work. Improper installation might cause injuries.

Before moving the scanner, disconnect the power plug from the power outlet.



Do not move the scanner with the power and interface cables connected as this might damage the cables, causing fire, electric shock or injuries.

Before moving the scanner, be sure to disconnect the power plug from the power outlet, and disconnect data cables. Also, make sure that the floor is free of obstructions.

Do not use the scanner immediately after moving it from a cold place into a warm room.



Do not use the device immediately after moving it from a cold place into a warm room. This may cause condensation, which might lead to scanning errors. Let the device dry about one or two hours before you use it.

Protect the scanner from static electricity.



Install the scanner away from strong magnetic fields and other sources of electronic noise. Also, protect the scanner from static electricity as this might cause the scanner to malfunction.

Do not use aerosol sprays near the scanner.



Do not use aerosol sprays to clean the scanner. Aerosol sprays cause dirt and dust to enter the scanner, resulting scanner failure and malfunction.

Avoid any contact when scanner is in use.



Avoid touching any scanner mechanism when scanning as this may cause injuries.

Disconnect the power plug from the power outlet when the scanner is not used for a long period of time.



When the scanner is not used for a long period of time, be sure to disconnect the power plug from the power outlet for safety.

Do not install the scanner in the direct sunlight.



Do not install the scanner in the direct sunlight or near heating apparatus. Doing so might cause excessive heat to build up inside the scanner, causing fire or scanner trouble. Install the scanner in a well-ventilated location.

Do not try to move or lift the scanner alone.



This scanner is heavy (77.2lbs/ 35kg). When you carry the scanner, ensure that additional personnel are used.

Before moving the scanner, make sure the shipping lock and the ADF lock screws are locked.



When moving the scanner, be sure to lock the shipping lock and the ADF lock screws in order to prevent damages to the scanner.



Contents

Introduction.....	i
Regulatory Information	i
Note, Liability	iii
Preface	iv
Safety Precautions	v

Chapter1 PREPARING THE SCANNER..... 1-1

1.1	Checking the contents of scanner package.....	1-2
1.2	Names and function of parts.....	1-2
1.3	Functions of the operator panel.....	1-3

Chapter 2 INSTALLATION OF THE SCANNER ... 2-1

2.1	Installing the scanner.....	2-2
2.2	Connecting the scanner to your PC.....	2-2
2.3	Installing the Scanner Application	2-4

Appendix AP-1

Appendix 1	Troubleshooting	AP-2
Appendix 2	Daily Care	AP-6
Appendix 3	Replacing Consumables	AP-8
Appendix 4	Setting the position of the ADF	AP-9

Chapter1 PREPARING THE SCANNER

1.1 Checking the contents of scanner package	1-2
1.2 Names and function of parts	1-2
1.3 Functions of the operator panel	1-3

1.1 Checking the contents of scanner package

When you unpack the scanner package, make sure that the package contains all the parts on the list included in the package.

If any parts are missing or defective, contact your sales representative. Handle the scanner and accessories with care.

1.2 Names and function of parts

This section describes the names of parts and their functions.

- Front (Flat Bed unit opened view)

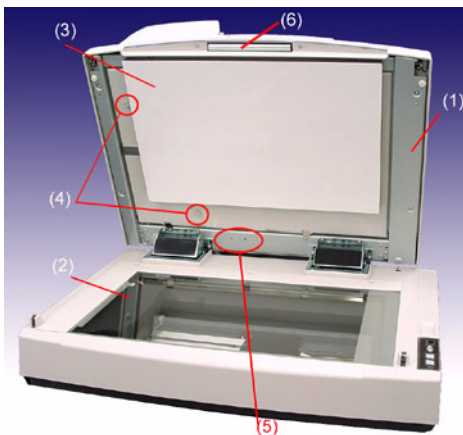


TABLE 1.

No.	Name	Function
1	Document Cover	When closed, this cover fixes the document set on the reading position.
2	Document Bed	For scanning documents with the Flat bed, place the document here.
3	Document Holding Pad	It fixes the document by pressing it onto the document bed.
4	ADF Lock Screws	Used to fix the ADF. They are securing the ADF during transportation.

TABLE 1.

No.	Name	Function
5	Screw Storage Holes	Holes in where the ADF Lock Screws are placed after unlocking the ADF.
6	Handle	Used to open/close the Document Cover.

- Front

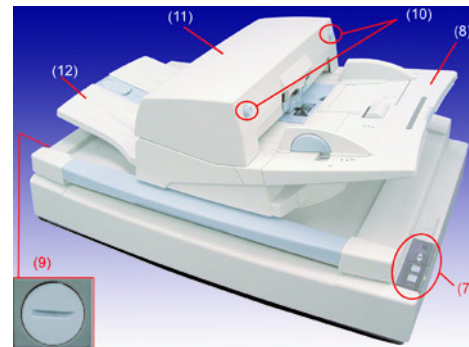
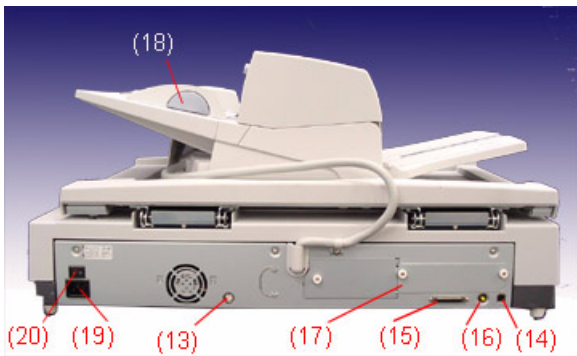


TABLE 2.

No.	Name	Function
7	Operator Panel	This panel consists of a Function No. display, four buttons and a LED.
8	ADF Paper Chute	For scanning documents with the ADF scanning, place the document here adjusting the side guides to the document width.
9	Shipping Lock	Used to fix the Flatbed's carrier unit in order to prevent damages during transportation.
10	ADF Button	Press this button to open the ADF.
11	ADF (Automatic Document Feeder)	It transports a document to the reading position automatically. According to need, this unit can be set in three directions by turning and sliding it.
12	Stacker	Scanned documents are ejected from the ADF onto this tray. It is possible to change the height.

- Rear



- ADF

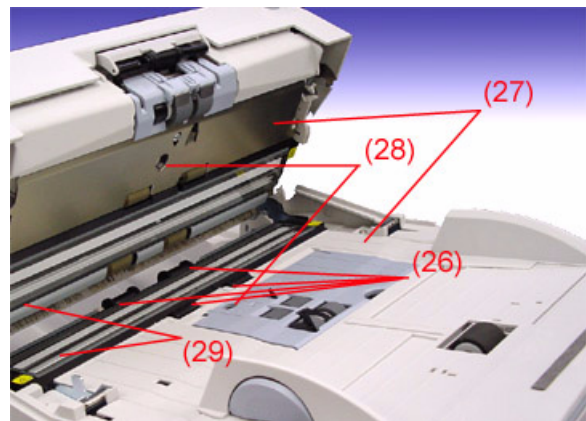
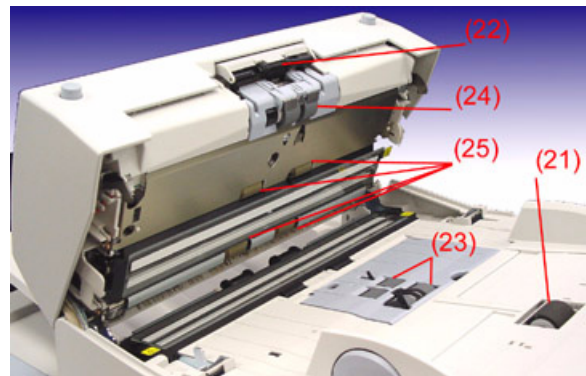


TABLE 3.

No.	Name	Function
13	EXT connector	Connector port for optional units.
14	USB Interface Connector	Used for connecting a USB interface cable from a PC.
15	SCSI Interface Connector	Used for connecting a SCSI interface cable from a PC.
16	SCSI ID Switch	Used for setting SCSI ID (The setting at the factory shipment is ID=5).
17	Third Party Slot (Optional Slot)	The slot for an option board.
18	Side Guide Button	Used for adjusting the side guides.
19	Power Inlet	Used for connecting a power cable from the power outlet.
20	Power Switch	Used for turning ON/OFF the scanner.

TABLE 4.

No.	Name
21	Chute Roller
22	Pick Arm
23	Pick Roller Set
24	Brake Roller
25	Feed Roller
26	Plastic Roller
27	Sheet Guide
28	Ultra Sonic Sensor (Multi feed detection)
29	Glass

1.3 Functions of the operator panel

The Operator Panel is located at the right side of the scanner. This panel consists of a function number display, buttons and a LED.

You can change the overlay on the operator panel according to your language.

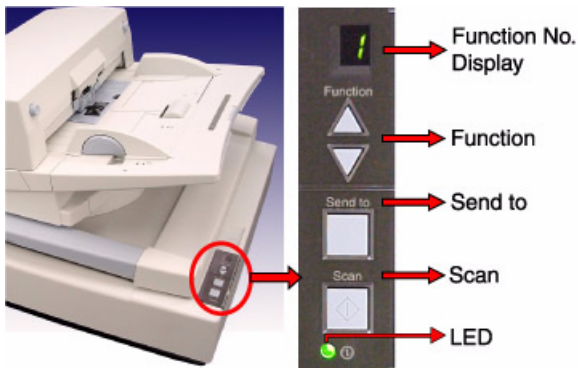


TABLE 5.

Name		Function
Function No. display		Indicates the function No. and error status.
Buttons	Function	Changes the Function activated by the Send to button .
	Send to	Launches the linked application software
	Scan	
LED	Power	Lights when the scanner is turned ON.

For details, refer to the "FUJITSU TWAIN32 Scanner Driver User's Guide", provided in the User Manual CD-ROM, and the "fi-5750C Operator's guide", provided in the Setup CD-ROM.

Indications on the Function No. display

The following shows the indications on the Function No. display.

- 8
Blinks only one time upon turning on the scanner.
- P
Indicates that the scanner has been turned ON and is being initialized.
- 0
Indicates that initialization will soon be completed.
- 1
Indicates that initialization has been completed successfully.
This status is called "Ready Status".
- U
Indicates that a temporary error (that users can solve) has occurred during the initialization or scanning of documents.
"U" and an error number (0, 1, 2, 4) are displayed alternately. To return the scanner to the ready status ("1"), press the "Scan" or "Send to" button while the error is indicated.
- E
Indicates that a device alarm (that users cannot solve) has occurred during the initialization or scanning of documents.
"E" and an "alarm code" (a number or letter) are indicated alternately. To return the scanner to the ready status ("1"), press "Scan" or "Send to" button while the alarm is indicated.
If this alarm occurs, turn the power off and then on again. If the alarm is indicated after turning on the power again, contact an authorized FUJITSU scanner service provider.

Chapter 2 INSTALLATION OF THE SCANNER

2.1 Installing the scanner	2-2
2.2 Connecting the scanner to your PC	2-2
2.3 Installing the Scanner Application	2-4

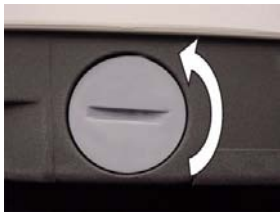
2.1 Installing the scanner

1. Place the scanner at its installation site.

For details on the scanner's dimensions and required installation space, refer to "10 SCANNER SPECIFICATION" in the "fi-5750C Operator's guide".

2. Unlock the Shipping Lock.

After placing the scanner to the installation site, switch the Shipping Lock into the opened (unlocked) position.



Horizontal position: Lock
Vertical position: Unlock

3. Remove the ADF Lock Screws.

After placing the scanner to the installation site, remove the ADF Lock Screws and place them into the Storage Holes. For more details about positioning of the ADF refer to "Appendix 4 Setting the position of the ADF" on page 9.

4. Setting the ADF Paper Chute.

Hold the ADF paper chute and insert its tabs into the holes on the rear side of the ADF as shown in the figure below so that the side guides facing upwards.



5. Setting the Stacker

Mount the Stacker onto the scanner aligning the protrusions to the holes on the scanner.

You can fix the stacker at two positions: the upper position or the lower position.



6. Connecting the Power cable.



ATTENTION



Use only the AC cable included the scanner package.

7. Connect the Power cable to a power outlet.

2.2 Connecting the scanner to your PC

When running Windows 95 and/or Windows NT 4.0, connect the scanner to your PC with the SCSI interface cable. When running Windows 98, Windows Me, Windows 2000 and/or

Windows XP, connect the scanner to your PC with either the USB or the SCSI interface cable.



Do not connect both the USB interface cable and the SCSI cable at the same time. It is not possible to use the USB interface with Windows 95 and/or WindowsNT 4.0.

Connecting the USB Cable

1. Please connect a USB cable to the Scanner.

Connect the USB interface cable to the USB interface connector of the scanner.



2. Please connect the other end of the cable to your PC.

3. Turn ON the scanner.

4. Turn ON your PC.



Use the USB interface cable provided as an accessory for the scanner. Operation with a commercially available USB cable is not guaranteed. When connecting to a USB hub, be sure to connect to the hub nearest your computer (first stage). If you connect it to a USB hub from the second stage onwards the scanner may not operate correctly.

Connecting the SCSI interface cable

When using the scanner with the SCSI interface, you need to purchase a commercially available SCSI cable and a SCSI card.

- SCSI cable

The SCSI has to fit to a 50 Pin half pitch connector and the SCSI card connector of your PC.

- SCSI card

Use the recommended SCSI card noted on the following website:

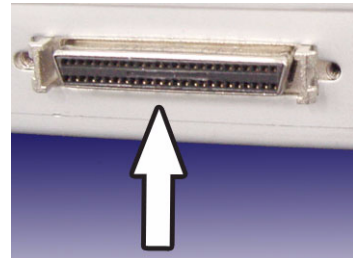
<http://imagescanner.fujitsu.com/>



When connecting the SCSI interface cable, be sure to first connect the SCSI interface cable then turn on the scanner and your PC. Connect the scanner so that it is the terminated device on the SCSI daisy chain.

1. Connect the SCSI cable to the scanner.

Connect the SCSI cable to the SCSI interface connector and make sure it is firmly connected.



2. Connect the other end of the cable to your PC.



For setting the SCSI ID of the scanner, please refer to the following section.

Setting the SCSI ID

The factory default setting for SCSI ID is "ID 5". If the SCSI ID of another device has already been set to the same ID, change either the scanner's SCSI ID or that of

the other device. To change the SCSI ID see the following procedure.

1. Turn the scanner OFF.

2. Set the SCSI ID.

Set the device address by using the SCSI ID switch on the rear of the scanner.

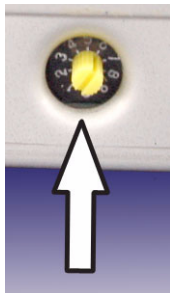


TABLE 1.

No.	Description:
0 - 7	Can be set as the ID.
8, 9	Used for the factory default value (SCSI ID=5).

3. Turn ON the Scanner.

When the scanner is turned ON, the SCSI ID set at step 2 is enabled.

4. Turn ON your PC.

2.3 Installing the Scanner Application

For scanning documents with this scanner, the scanner driver as well as an image capturing application software (called "application" hereafter) must be installed on your PC.

Scanner driver:
FUJITSU TWAIN 32 Scanner Driver
FUJITSU ISIS Scanner Driver

Application:
ScandAll 21 (for TWAIN)
QuickScan Pro (for ISIS)

2.3.1 For Fujitsu Twain 32 Scanner Driver

Preparation

Before installing the application, please confirm the following items:

- Keep the Setup CD-ROM at hand.
- Confirm if the scanner is connected to your PC correctly.
- If an older version of the FUJITSU TWAIN 32 Driver has already been installed, please uninstall it before installing the new one.
- There are two types of FUJITSU TWAIN 32 Drivers. Depending on the operating system (OS) of the computer, the most appropriate driver will be installed automatically.
 - For Windows 98, Windows Me, Windows 2000, Windows XP: FUJITSU TWAIN32 V9
 - For Windows 95 and Windows NT 4.0: FUJITSU TWAIN32 V8
- When using Windows 95 or Windows NT 4.0: ASPI Manager 4.01 or later is required (generally comes with SCSI board products).



For details on connecting the scanner, refer to "2.1 Installing the scanner" on page 2 in this manual.



Uninstall [Scanner Utility for Microsoft Windows] in [Add/Remove Programs] of the control panel.

Installing the FUJITSU TWAIN32 Scanner Driver



Windows XP screenshots are used in this section. The windows and operations may slightly vary depending on your OS.

1. Turn the scanner ON.

2. Turn on your PC and log on to Windows.



When using Windows NT 4.0, Windows 2000 or Windows XP, log on as a user with "Administrator" privileges (privileges of the administrator of your PC)



The scanner may be detected automatically. If so, [Found New Hardware Wizard] (or [Add/Remove Hardware Wizard]) dialog box will appear. Click [Cancel] to close the Wizard window.



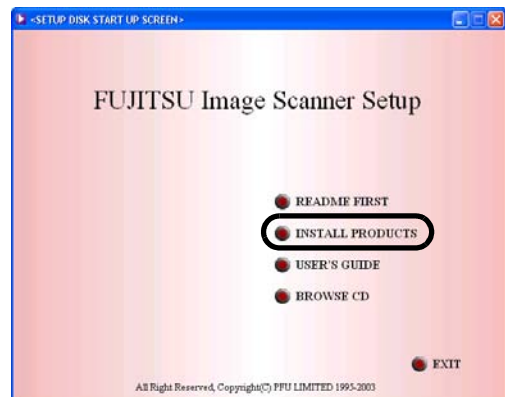
3. Insert the Setup CD-ROM into the CD drive.

The <SETUP DISK START UP SCREEN> will be displayed.



This screen may not appear when the "Autoplay" setting of your PC is OFF. In this case, run "Install.exe" in this CD-ROM directly by the "Explorer" or "My Computer".

4. Click [Install Products].



5. Click [TWAIN Driver] on the window below.



6. Error Recovery Guide Installation window appears.

Error Recovery Guide is a software that displays troubleshooting information on screen if any scanner error occurred. Although you do not install this software, the performance of the scanner would not be affected. However it is recommendable to install this software.



When you select [Yes] for installing Error Recovery Guide, [Choose Setup Language] window appears. Select a language and follow the instructions on the window. Error Recovery Guide will automatically start on finishing its installation. Please wait until the installation of TWAIN driver automatically starts.

7. **Select a language used for installation on [Choose Setup Language] window and click [OK].**



8. **Install the application following the instructions on the window.**

9. **When the [InstallShield Wizard Complete] window appears, click [Finish].**



10. **Your computer is restarted and the scanner will be detected.**

Do not remove the Setup CD-ROM from the CD drive until your PC will be completely restarted.



Depending on the OS, the following operations may be necessary.

For Windows 98:
When a request for inserting the CD-ROM of Windows 98 appears, insert it into the CD drive and click the [OK] button.

For Windows 2000:
When [Digital Signature not Found] appears, click [Yes].

For Windows XP

1. When [Found New Hardware Wizard] appears, confirm that the Setup CD-ROM is set in the CD drive, then click the [Next] button.

2. When any alarm is displayed on [Hardware Installation] window, click the [Continue Anyway] button.
3. Click the [Finish] button.

Now the installation of the scanner driver is completed.



For confirming if the installation was successful, perform a scanning operation by using an application that complies with the TWAIN standard such as ScandAll 21.

Installing ScandAll 21

ScandAll 21 is an imaging software, conforming with the TWAIN standards. With the FUJITSU TWAIN 32 scanner driver you can capture scanned image data from the scanner.

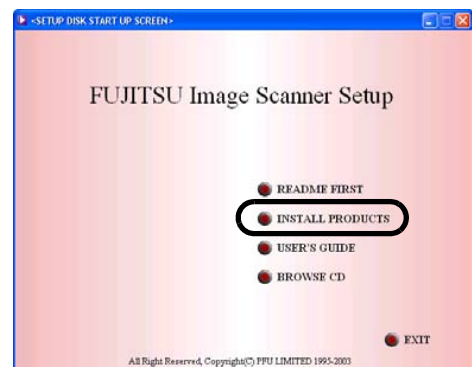


When using Windows NT 4.0, Windows 2000 and/or Windows XP, please login as a user with "Administrator" privileges (privileges of the administrator of your PC).

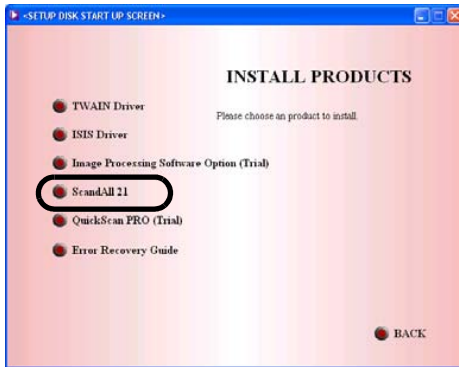
1. **Insert the Setup CD-ROM in your CD-drive**

The, <SETUP DISK STARTUP SCREEN> will be displayed.

2. **Click [Install Products].**



3. Click [ScandAll 21].



4. Select an appropriate language from the <Choose Setup Language> menu and click [OK].



5. Install the application following the instructions on the screen.

6. When [InstallShield Wizard Complete] screen is displayed, click [Finish].



For finishing the installation, it may be necessary to restart your computer. Follow the instructions on the window.

Confirming the installation

1. Set your documents into the ADF Paper Chute.

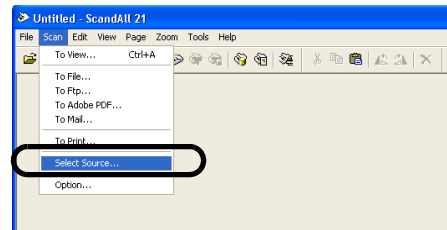
For the loading of documents, please refer to 2.4 "Scanning documents" of the "fi-5750C Operator's Guide".

2. Start ScandAll 21

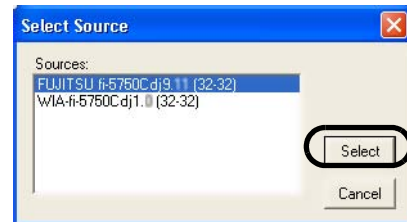
From the [Start] Menu, select [Program]-[Scanner Utility for Microsoft Windows]-[ScandAll 21].

3. Specify the scanner to be used

Select [Select Source] from the [Scan] menu.



4. In the displayed dialog box, please select [FUJITSU fi-5750Cdj] or [FUJITSU TWAIN32], then click the [Select] button.



- For Windows 98, Windows Me, Windows 2000, Windows XP select:
[FUJITSU fi-5750Cdj]
- For Windows 95, Windows NT 4.0:
[FUJITSU TWAIN32]

5. Select [To View] from the [scan] menu.

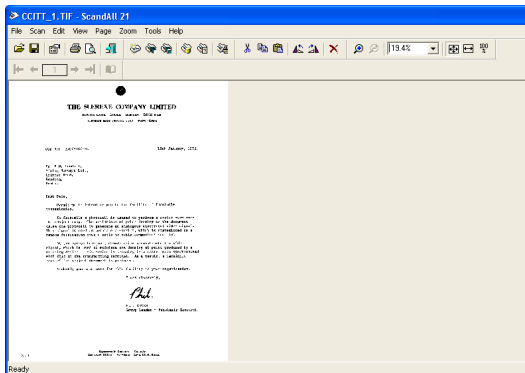
- Set the scanning resolution, document size etc. on the [TWAIN driver] window (for setting details of the scanning) and click the [Scan] button.



For details about [TWAIN driver], refer to the "FUJITSU TWAIN32 Scanner Driver User Guide" provided on the Setup CD-ROM

- The document is scanned and it's image will be displayed on the ScandAll 21 screen.

If the scanning is performed successfully, the installation has been finished.



For details about various types of scanning, refer to the "fi-5750C Operator's Guide", provided on the User Manual CD-ROM.

2.3.2 For Fujitsu ISIS Scanner Driver

Preparation

Please confirm the following items before installing the ISIS driver:

- Setup CD-ROM
- Confirm if the scanner is connected correctly to your PC.



About connecting your scanner to the PC, please refer to "2.1 Installing the scanner" on page 2" of this manual.

Installing FUJITSU ISIS scanner driver

- Turn on the scanner.
- Turn your PC on an log on to Windows.



When using Windows NT 4.0, Windows 2000 and/or Windows XP, please login as a user with "Administrator" privileges (privileges of the administrator of your PC).



In this manual, Windows XP screens are used. The screens and operations might differ slightly depending on your OS. The scanner is automatically detected and "A detection wizard of the new hardware " or "An addition wizard of new hardware " may be displayed. Please click the [cancel] button and close the wizard screen. (* The screen might differ slightly depending on your OS)



- Insert the Setup CD-ROM into the CD Drive.

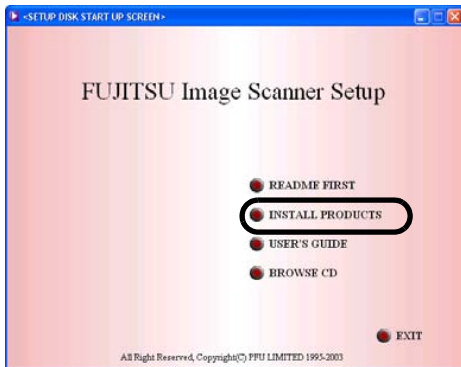
The <SETUP DISK STARTUP SCREEN> will be displayed.

ATTENTION



This screen may not be displayed when the "Autoplay" setting of your PC is turned off. In this case, please run "Install.exe" on the CD-ROM directly from explorer or "My Computer".

4. Click [Install Products].



5. Click [ISIS Driver].



6. The Error Recovery Guide Installation window appears.

Error Recovery Guide is a software providing you with troubleshooting information displayed on the screen when a scanner error occurs. Not installing this software will not have an effect on the performance of the scanner. However it is recommended to install this software.

ATTENTION



When you select [Yes] for installing Error Recovery Guide, [Choose Setup Language] window appears. Select a language and follow the instructions on the window. Error Recovery Guide will automatically start on finishing its installation. Please wait until the installation of ISIS driver automatically starts.

7. Select an appropriate language used for the installation from the <Choose Setup Language> window and click [OK].



8. Install the application following the instructions on the window.

9. When the [InstallShield Wizard Completed] appears, click on [Finish].

10. The system is restarted and the scanner will be detected.

Do not remove the Setup CD-ROM until the PC is restarted completely.

ATTENTION



Depending on the OS, the following operations may be necessary.

For Windows 98:

When a request for inserting the CD-ROM of Windows 98 appears, insert it into the CD drive and click the [OK] button.

For Windows 2000:

When [Digital Signature not Found] appears, click [Yes].

For Windows XP:

1. When [Found New Hardware Wizard] appears, confirm that the Setup CD-ROM is set in the CD drive, then click the [Next] button.
2. When any alarm is displayed on [Hardware Installation] window, click the [Continue Anyway] button.
3. Click the [Finish] button.

Now the installation of the scanner driver is completed.

Installing QuickScan Pro(Trial)

"QuickScan Pro" is an imaging software that complies with the ISIS standards. With the FUJITSU ISIS scanner driver you can capture scanned image data read with the scanner.

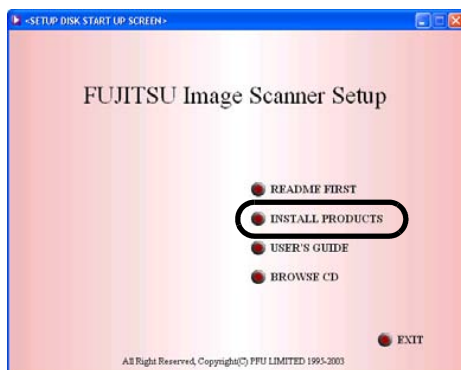


When using Windows NT 4.0, Windows 2000 and/or Windows XP, please login as a user with "Administrator" privileges (privileges of the administrator of your PC).

1. Insert the Setup CD-ROM into the CD drive.

The <SETUP DISK STARTUP SCREEN> will be displayed.

2. Click [Install Products].



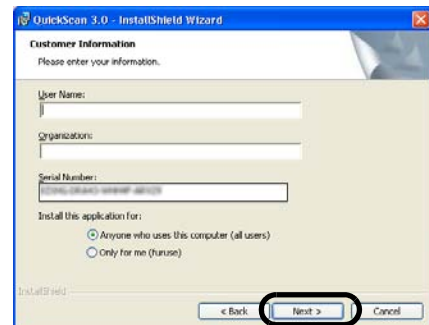
3. Click the [QuickScan PRO (trial)] button in the following screen.



4. Install the application following the instructions on the window.



5. Input the requested information and click on the [Next] button.



QuickScan Pro, attached to the Setup CD-ROM is a trial version. Therefore, there is a limitation of 30 program starts. Purchasing this software is necessary if you intend to use this software unlimited. (when installing and using the trial version, please use the displayed serial number. For the operations of QuickScan, please refer to the "Overview of QuickScan" or the "QuickScan Help". Please click [Start], [Program], and then [QuickScan] in turn, and select then the file to refer.

6. Install the application following the instructions on the window.

Confirming the installation

Please confirm if the scanner operates correctly with the following procedure.

1. Load the documents on the scanner.

For loading documents, please refer to Chapter 2 "BASIC SCANNER OPERATIONS" of the "fi-5750C Operator's Guide".

2. Start QuickScan Pro.

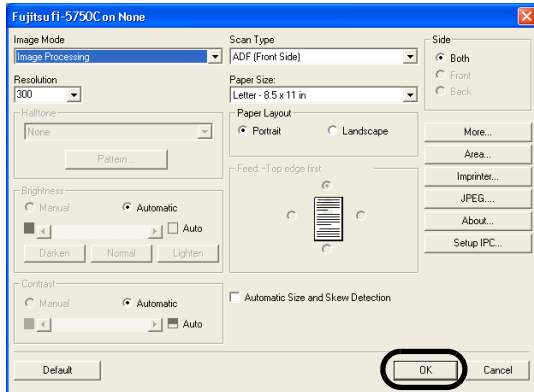
Please select [Start], [Programs], [QuickScan] in turn, then click on [QuickScan].

3. Select [Scan], and [Select Scanner...] from the menu bar.

Select Fujitsu fi-5750C, then click the [OK] button.

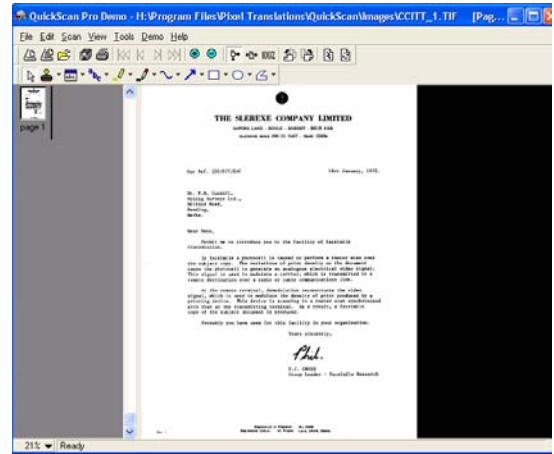


4. Select [Preview Setting...] from the [Scan] menu. Set the reading resolution and document size, then click [OK].



5. Select [Preview Scan] from the [Scan] menu to start the scanning-

If the scanning is completed without any troubles, the installation was performed successfully.



Refer to "QuickScan Overview" or "QuickScan Help" for information about QuickScan™ functions and operations. On the [Start] menu, point to [Programs] - [QuickScan] and click the file.

2.3.3 Installing other application programs

Installing Error Recovery Guide

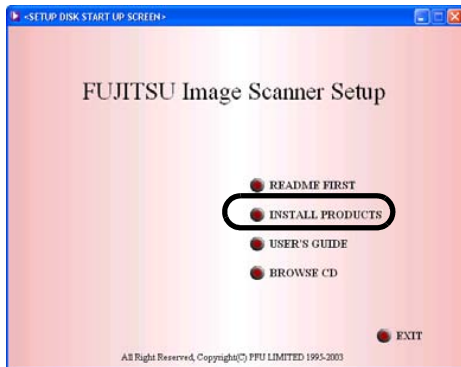
If you did not install the Error recovery guide together with the driver, please follow the below given procedure for installing it separately.

When Error Recovery Guide is installed on your PC, it displays troubleshooting information on screen if any scanner error occurred.

1. Insert the Setup CD-ROM in your CD drive.

The <SETUP DISK STARTUP SCREEN> will be displayed.

2. Click [Install Products].



3. Click [Error Recovery Guide] in the following screen.

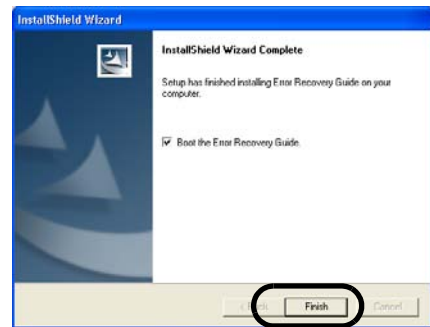


4. Select a language to use for the installation in the <Choose Setup Language> window and click [OK].



5. Install the application following the instructions on the window.

6. When the [InstallShield Wizard Complete] screen is displayed, click [Finish].



Installing the Image processing software option (trial version)

For the installation of the image processing software option (trial version), please refer to the "Image Processing Software Option User's Guide".

Installing Adobe Acrobat

Install Adobe Acrobat from the "Adobe Acrobat 6.0 CD-ROM" provided with this scanner.



Adobe Acrobat 6.0 Standard is not supported by Microsoft Windows 95, Microsoft Windows NT4.0, Microsoft Windows 98, Microsoft Windows Me. (Except for Microsoft Windows 98 Second Edition.)

To use Acrobat 6.0 with FUJITSU scanners, FUJITSU TWAIN32 Scanner Driver Version 8.11.32 or later, or Version 9.11.32 or later is required.



Adobe Acrobat is required for displaying the manuals stored on the CD-ROM.
* The installation of Adobe Acrobat 6.0 is not necessary if it is already installed on your PC.

1. Insert the Adobe Acrobat 6.0 CD-ROM into your CD-ROM drive.

The CD-ROM is automatically recognized and the "Adobe Acrobat6.0 AutoPlay" screen will be displayed.



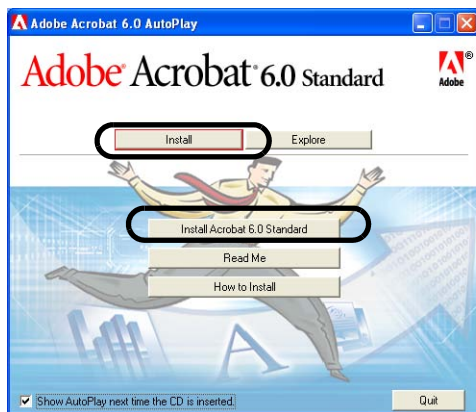
The <Adobe Acrobat 6.0 AutoPlay> screen may not appear when the "Autoplay" setting of your PC is turned off. In this case, run "AutoPlay.exe" on the CD-ROM directly from the explorer or "My Computer".



Support and User registration for Adobe products

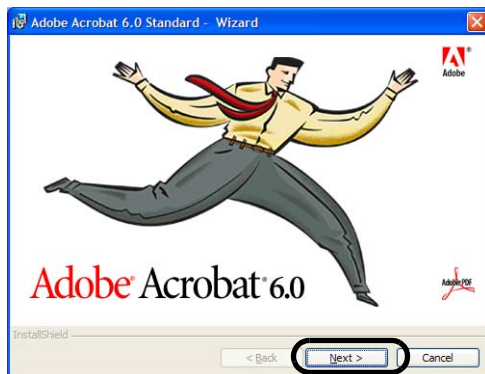
For details, refer to the technical support information stored in the [Customer Support] folder on Adobe Acrobat 6.0 Standard CD-ROM. (Note that free person-to-person support is not available for this is bundled product.)

2. Click the [Install] button when the following screen is displayed. Then click the [Install Acrobat 6.0 Standard] button.



3. Click the [Next] button when the following screen is displayed.

The installation is started and its setup screen is displayed.



4. After the setup screen is displayed, follow the instructions on the screen to perform the installing.



For more detailed information about the Adobe Acrobat 6.0 installation, please read "Read me" displayed at the screen of operation 2. For the operations of Adobe Acrobat 6.0, please refer to the "Adobe Acrobat 6.0 help".



Appendix

Appendix 1 Troubleshooting	AP-2
Appendix 2 Daily Care	AP-6
Appendix 3 Replacing Consumables	AP-8
Appendix 4 Setting the position of the ADF ...	AP-9

Appendix 1 Troubleshooting

Before you ask for repair service, check the following items. If the problem persists even after implementing remedies below, contact the dealer where you purchased the or an authorized FUJITSU service provider.

Troubleshooting checklist

TABLE 1.

Symptom	Check this Item	Remedy
Scanner cannot be tuned ON.	Did you push the power switch?	Push the power switch.
	Is AC cable connected correctly?	Correctly connect the AC cable.
		Disconnect the AC cable from the scanner, then connect it again. If this does not restore the power supply, contact the dealer where you purchased the scanner or an authorized FUJITSU scanner service provider.
	Is Windows normally started up?	Push the power switch again after completely starting up Windows.
Is the shipping lock unlocked?	Unlock the shipping lock.	
Scanning does not start.	Are the documents loaded correctly on the ADF paper chute?	Load the document correctly on ADF paper chute.
	Is the ADF closed completely?	Close the ADF completely.
	Is USB or SCSI cable connected correctly?	Correctly connect the cable. (When a USB hub is used, check the hub's power supply.)
	Is the SCSI ID set correctly? (When using SCSI interface)	Set the SCSI ID correctly using SCSI ID switch on the rear of the scanner.
	Does the Function No. display indicates an alarm or an error?	When the Function No. display indicates an alarm or an error, refer to "6 TROUBLE SHOOTING" in the "fi-5750C Operator's Guide".
	Does the alarm state remain displayed even after the scanner has been turned OFF and back ON again?	Turn OFF and ON the scanner. If this does not eliminate the alarm state, contact the dealer where you purchased the scanner or an authorized FUJITSU service provider.
Vertical lines appear in the printed images.	(When using the Flatbed) Are the glass and document holding pad dirty?	Clean the glass and document holding pad following the instructions in "4.3 Cleaning Flatbed" of the "fi-5750C Operator's Guide".
	(When using the ADF) Is the glass inside the ADF dirty?	Clean the glass following the instruction in "4.2 Cleaning ADF" of the "fi-5750C Operator's Guide".
The printed scanned image shifts or is distorted.	(When using the Flatbed) Are the glass and document holding pad dirty?	Clean the glass and document holding pad following the instructions in "4.3 Cleaning Flatbed" of the "fi-5750C Operator's Guide".
	(When using the Flatbed) Is the document holding pad dirty?	Install the document holding pad correctly.
	(When using the ADF) Is the ADF cover pressed down or heavy object placed on the ADF during scanning?	Do not press down the ADF nor place heavy objects on the ADF during scanning.
	(When using the ADF) Is something causing the scanner to vibrate during scanning?	Do not allow anything to cause the scanner to vibrate while scanning.

TABLE 1.

Symptom	Check this Item	Remedy
The printed scanned image shifts or is distorted.	Are the documents loaded correctly?	Load the documents correctly.
Quality of scanned images is unsatisfactory.	(When using the Flatbed) Is the document holding pad dirty?	Install the document holding pad correctly.
	(When using the ADF) Is the glass inside the ADF dirty?	Clean the glass following the instruction in "4.2 Cleaning ADF" of the "fi-5750C Operator's Guide".
Double feeds occur frequently.	Do the documents qualify the "Document Quality" and "Double-feed Detection Condition" in "8 DOCUMENT SPECIFICATON FOR THE ADF" of the "fi-5750C Operator's Guide" fi-5750C?	Use the documents that qualify the "Document Quality" and "Double-feed Detection Condition" in "8 DOCUMENT SPECIFICATON FOR THE ADF" of the "fi-5750C Operator's Guide".
	Are the documents set properly on the ADF paper chute?	Fan the documents before scanning. Correctly align the document stack and load them on the ADF paper chute. For details, refer to "2 BASIC SCANNER OPERATIONS" of the "fi-5750C Operator's Guide".
	Is the document stack thicker than: 20mm? (for A4 size paper) 10mm? (for A3 size paper)	Reduce the number of sheets in the document stack to 20mm (for A4 size paper) or 10mm (for A3 size paper) thickness or less.
	Is the Brake roller dirty?	Clean the Brake roller. For details, refer to "4 DAILY CARE OF THE EQUIPMENT" of the "fi-5750C Operator's Guide"
	Is the Brake roller worn out?	Replace the Brake roller. For details, refer to "5 REPLACING CONSUMABLES" of the "fi-5750C Operator's Guide"
Documents are not fed into the ADF (pick error occurs frequently or the document stops midway).	Do the documents qualify the "Document Quality" and "Double-feed Detection Condition" in "8 DOCUMENT SPECIFICATON FOR THE ADF" of the "fi-5750C Operator's Guide"?	Use the documents that qualify the "Document Quality" and "Double-feed Detection Condition" in "8 DOCUMENT SPECIFICATON FOR THE ADF" of the "fi-5750C Operator's Guide".
	Is the Pick roller set dirty?	Clean the Pick roller set. For details, refer to 4.2 "Cleaning the ADF" of the "fi-5750C Operator's Guide".
	Is the Pick roller set worn?	Replace the Pick roller set. For details, refer to 5.3 "Replacing the pick roller set" of the "fi-5750C Operator's Guide".
	Is there any debris on the document feed path?	Remove any debris from the document feed path.
The scanned images are elongated.	Are the Feed rollers dirty?	Clean the Feed rollers. For details, refer to the "fi-5750C Operator's Guide".
	Did you adjust the scan scale?	For Windows 98, Windows Me, Windows 2000 and Windows XP, please select [Scanner and Camera] in the [Control Panel], then click [Device Set] tab to adjust the scan scale. For Windows 95 and Windows NT 4.0, right-click Scanner Control Center icon in task tray, select [Option] and adjust the scan scale. Please refer to "7 Online Setup" of the "fi-5750 Operator's Guide" and adjust the offset from the Software Operation Panel (online settings).

TABLE 1.

Symptom	Check this Item	Remedy
There is a shadow on the leading edge of the scanned images.	Are the Feed rollers dirty?	Clean the Feed roller. For details, refer to "4 DAILY CARE OF THE EQUIPMENT" of the "fi-5750C Operator's Guide"
	Adjust the offset.	For Windows 98, Windows Me, Windows 2000 and Windows XP, adjust the [Sub-scan Setting\ on] Scanners and Cameras\ in the [Control Panel]. For Windows 95 and Windows NT 4.0, right-click the Scanner Control Center icon, select [Options] - [Sub-scan Setting] and adjust the offset. Please refer to Chapter 7 "Online Setup" of the "fi-5750 Operator's Guide" and adjust the offset from the Software Operation Panel (online settings).

Temporary Error

TABLE 2.

Indication	Meaning
U0	Confirm that the shipping lock is released.
U1	A paper feed error occurred.
U2	A double feed error occurred.
U4	The ADF cover is opened.

The following shows the procedure for resolving of each temporary error.

- "U0" error
Release the shipping lock.
For releasing the shipping lock, refer to 2.1 "Installing the Scanner" in this manual.
- "U1" error
Remove jammed documents.
Confirm that the documents meet the paper conditions for scanning.
Refer to Chapter 6 "TROUBLE SHOOTING" in the "fi-5750C Operator's Guide".
- "U2" error
Remove jammed documents
Confirm that the documents meet the paper conditions for scanning.
Refer to "8 DOCUMENT SPECIFICATION OF ADF" of the "fi-5750C Operator's Guide".
- "U4" error
Close the ADF cover completely.
For details, refer to "6 TROUBLESHOOTING" in the "fi-5750C Operator's Guide".

Device alarm (Permanent error)

When you encounter any alarm, turn OFF and ON the scanner. If the alarm is still displayed on the Function No. display, contact the dealer where you purchased the scanner or an authorized FUJITSU scanner service provider.

TABLE 3.

Indication	Meaning
E0	Flatbed motor malfunction.
E1	Optical error (Flatbed).
E2	Optical error (ADF front).
E3	Optical error (ADF back).
E4	Motor fuse malfunction.
E5	Lamp fuse malfunction.
E6	Operator panel malfunction.
E7	EEPROM malfunction.
E8	SCSI interface fuse malfunction.
E9	Image memory malfunction.
Ec	Memory malfunction.
Ed	Malfunction at SCSI interface controller.
EF	Background switching malfunction.
E10	ROM malfunction.
E11	Fan malfunction.
E12	Heater malfunction.
E15	Malfunction in the additional memory option.
E16	Option board malfunction.
E18	Sensor malfunction.
E19	LSI malfunction.
E1A	Internal communication malfunction.



About Error Recovery Guide

When this software is installed on your PC, the icon appears in the task tray when Windows is started up. If any device alarm or temporary error occurred, the Error Recovery Guide window appears and displays information such as error names and error codes regarding the alarm. Record the information and click [Details...] to know more detailed information for trouble shooting.

Appendix 2 Daily Care



The glass of the inside of the ADF becomes hot during operation.

When you clean the inside of the scanner, turn OFF the power and unplug the AC cable from the outlet and wait for at least three minutes.



Do not turn OFF the scanner when you clean the Feed rollers and Plastic Rollers.



Cleaning Materials

TABLE 4.

Cleaning Materials	Parts No.	Remarks
Cleaner F1	CA99501-0013	1 bottle. Moisten a cloth with this fluid and wipe the respective areas. *1
Cleaner F2	CA99501-0014	1 bottle. Moisten a cotton swab with this fluid and clean the respective areas. *1
Cleaning Paper	CA99501-0012	10 sheets / package. Moisten a Cleaning Paper with Cleaner F1 and insert it into the ADF. *1
Lint-free dry cloth	Commercially available one.	

*1) For details on the cleaning materials, contact the FUJITSU scanner dealer where you purchased the scanner.



Do not clean the rubber rollers with Cleaner F2.

Locations and Cycle for Cleaning

TABLE 5.

	Part to Clean	Standard Cleaning Cycle using Cleaner F1	Standard Cleaning Cycle using Cleaning Paper with Cleaner F1	Standard Cleaning Cycle using Cleaner F2
		Clean these parts after every 10,000 scans.	Clean these parts after every 10,000 scans.	Clean these parts when dirty.
Flat Bed	Document Holding Pad	✓		
	Document Bed	✓		
ADF	Chute Roller	✓		
	Pick Arm	✓		
	Pick Roller Set	✓	✓	
	Brake Roller	✓	✓	
	Feed Rollers	✓	✓	
	Plastic Rollers	✓	✓	✓
	Sheet Guide	✓	✓	
	Glass	✓		
	Ultra Sonic Sensor	Clean this part with a dry lint-free dry cloth.		

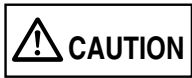
For details on the cleaning the ADF, refer to Chapter 4 "DAILY CARE OF THE EQUIPMENT" of the "fi-5750C Operator Guide".



The scanner must be cleaned more frequently if you scan any of the following type of documents.

- Documents of coated paper.
- Documents that are almost completely covered with printed text or graphics.
- Chemically treated documents such as carbonless paper
- Documents containing a large amount of calcium carbonate
- Handwritten documents

Appendix 3 Replacing Consumables



The glass of the inside of the ADF becomes hot during operation.



When you clean the inside of the scanner, turn OFF the power and unplug the AC cable from the outlet and wait for at least three minutes.



Consumables and Replacement Cycle

The following table shows the specifications of consumables and guidelines for the replacement cycle.

TABLE 6.

Description	Part No.	Standard Replacement Cycle
Brake Roller	PA03338-K010	After 250,000 scans or one year.
Pick Roller*	PA03338-K011	After 250,000 scans or one year.

* A set of two rollers.

For purchase of consumables, contact the store where you purchased the scanner or an authorized FUJITSU scanner service provider.

The replacement cycles above are rough guidelines for the case of using A4/Letter woodfree or wood containing paper 64 g/m² (17 lb). This cycle varies according to the type

of the used paper and how frequently the scanner is used and cleaned.

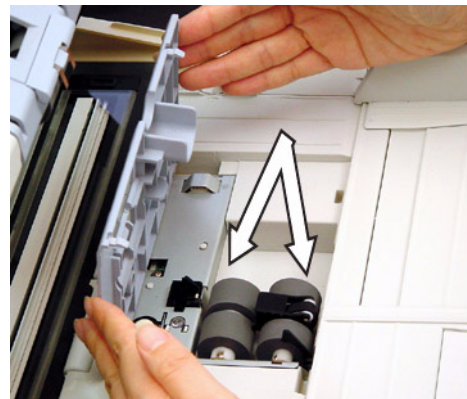


Use only the specified consumables.

Do not use other consumables.

The following pictures show the locations of the parts to be replaced. Refer to "Chapter 4 Replacing Consumables" fi-5750C Operator's Guide on User Manual CD-ROM.

Pick Roller Set



Brake Roller



Appendix 4 Setting the position of the ADF

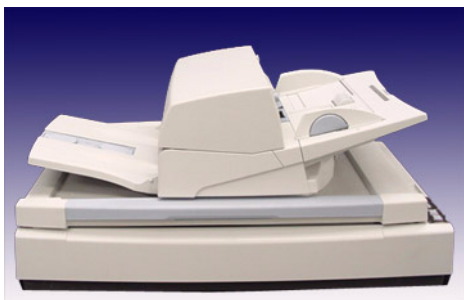
As the factory default, ADF of fi-5750C is fixed with ADF lock screws. Be sure to remove the screws before changing the position of the ADF.

ADF can be set to the following three positions:

- Type 1: Traditional
 - Traditional style of previous FUJITSU scanner products
 - For operators accustomed to previous FUJITSU scanners



- Type 2: Standard
 - Small foot print
 - For right-handed operators



- Type 3: Reversed
 - Small foot print

- For left-handed operators



Type 2 and 3 are available only when the ADF is set to the center position. Before changing the ADF position to Type 2 or 3, slide the ADF to the center position. When the ADF is in Type 2 position, you can change the position to Type 3 by rotating the ADF in 180 degrees and vice versa.

For details on setting the ADF, refer to 2.2 “Setting the ADF” of “fi-5750C Operator’s Guide” on Manual CD-ROM.



Take care not to pinch your fingers when rotating the ADF.



- Please rotate the ADF after you set the stacker upright.
 - When you change the position of the ADF, do not rotate it over 180 degrees, other wise the ADF may be damaged.
-

fi-5750C Image Scanner Getting Started

P3PC-E737-02EN

Date of issuance: June, 2006

Issuance responsibility: PFU LIMITED

Printed in Singapore

- Copying of the contents of this manual in whole or in part and copying of the scanner application is forbidden under the copyright law.
- The contents of this manual are subject to change without notice.
- PFU LIMITED is not liable whatsoever for any damages resulting from use of this scanner and procedures described in this manual, profit loss due to defects, and any claims by a third party.

Free Manuals Download Website

<http://myh66.com>

<http://usermanuals.us>

<http://www.somanuals.com>

<http://www.4manuals.cc>

<http://www.manual-lib.com>

<http://www.404manual.com>

<http://www.luxmanual.com>

<http://aubethermostatmanual.com>

Golf course search by state

<http://golfingnear.com>

Email search by domain

<http://emailbydomain.com>

Auto manuals search

<http://auto.somanuals.com>

TV manuals search

<http://tv.somanuals.com>