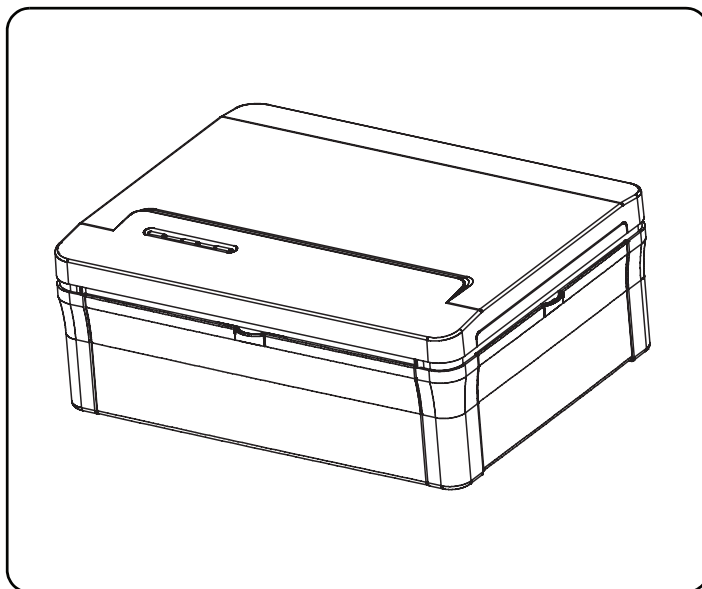


# Photo Printer

## FDP-100

### User's Guide



Introduction

Prepare

Printing from the  
camera

Printing from the  
computer

appendix



We would like to take this opportunity to thank you for purchasing this Photo Printer. Please read this User's guide carefully and keep it for future reference.

# Contents

## Introduction

<b>IMPORTANT SAFEGUARDS</b> .....	<b>4</b>
Connection to Power (For UK).....	8
<b>Introduction</b> .....	<b>9</b>
Standard Accessories .....	9
Notice.....	9
Copyrights .....	10
Trademarks .....	10
Others .....	10
<b>Features</b> .....	<b>11</b>
<b>Flow of the Printer Operation</b> .....	<b>12</b>
<b>Quick Guide</b> .....	<b>13</b>
<b>Safety Precautions</b> .....	<b>15</b>
WARNINGS .....	15
CAUTIONS .....	16
<b>Usage/Handling Note</b> .....	<b>17</b>
Location Notes .....	17
Handling/Maintenance Notes.....	17
Notes in Printing.....	18
Paper/Paper Tray Notes .....	18
Prints Notes .....	19
Ink Cartridge Notes .....	19
Condensation Notes .....	19
<b>Controls and Components</b> .....	<b>20</b>
<b>Paper/Ink cartridge</b> .....	<b>22</b>

## Prepare

<b>Set the Ink Cartridge in the Printer</b> .....	<b>23</b>
How to Eject the Ink Cartridge .....	24
<b>Set the Paper in the Paper Tray</b> .....	<b>25</b>
<b>Set the Paper Tray in the Printer</b> .....	<b>26</b>
<b>Turning on the Power (Connecting)</b> .....	<b>27</b>

## Printing from the Camera

<b>Printing from the Camera (PictBridge Printing).....</b>	<b>28</b>
Connecting to the Camera.....	28
Printing from the Camera.....	29

## Printing from the Computer



<b>System Requirements .....</b>	<b>30</b>
Windows .....	30
Macintosh.....	30
<b>Installing the Printer Driver.....</b>	<b>31</b>
Windows .....	31
Macintosh.....	32
<b>Connecting the Printer to a Computer.....</b>	<b>33</b>
<b>Printing from the Computer.....</b>	<b>34</b>
<b>Uninstalling the Printer Driver.....</b>	<b>35</b>
Windows .....	35
Macintosh.....	35

## Appendix

<b>If Errors have Occurred.....</b>	<b>36</b>
Error Messages.....	36
[ERROR] Lamp .....	37
<b>Before Requesting Services .....</b>	<b>38</b>
Troubleshooting .....	38
If Paper Jam has Occurred.....	40
Using the Cleaner .....	41
<b>Specifications .....</b>	<b>42</b>
Main Specifications .....	42
<b>FUNAI SOFTWARE LICENSE AGREEMENT.....</b>	<b>43</b>
FUNAI SOFTWARE LICENSE AGREEMENT.....	43

## IMPORTANT SAFEGUARDS

**WARNING:** TO REDUCE THE RISK OF FIRE OR ELECTRIC SHOCK, DO NOT EXPOSE THIS APPLIANCE TO RAIN OR MOISTURE.

	<b>CAUTION</b> <b>RISK OF ELECTRIC SHOCK</b> <b>DO NOT OPEN</b>	
<b>CAUTION:</b> TO REDUCE THE RISK OF ELECTRIC SHOCK, DO NOT REMOVE COVER (OR BACK). NO USER SERVICEABLE PARTS INSIDE. REFER SERVICING TO QUALIFIED SERVICE PERSONNEL.		



The lightning flash with arrowhead symbol, within an equilateral triangle, is intended to alert the user to the presence of uninsulated "dangerous voltage" within the unit's enclosure that may be of sufficient magnitude to constitute a risk of electric shock to persons.



The exclamation point within an equilateral triangle is intended to alert the user to the presence of important operating and maintenance (servicing) instructions in the literature accompanying the appliance.

# IMPORTANT SAFEGUARDS

- 1) Read Instructions - All the safety and operating instructions should be read before the appliance is operated.
- 2) Retain Instructions - The safety and operating instructions should be retained for future reference.
- 3) Heed Warnings - All warnings on the appliance and in the operating instructions should be adhered to.
- 4) Follow Instructions - All operating and use instructions should be followed.
- 5) Cleaning - Unplug this unit from the wall outlet before cleaning. Do not use liquid cleaners or aerosol cleaners. Use a damp cloth for cleaning.
- 6) Attachments - Do not use attachments not recommended by the product manufacturer as they may cause hazards.
- 7) Water and Moisture - Do not use this unit near water, for example, near a bath tub, wash bowl, kitchen sink or laundry tub, in a wet basement, or near a swimming pool, and the like.
- 8) Accessories - Do not place this unit on an unstable cart, stand, tripod, bracket, or table. The unit may fall, causing serious injury to a child or adult, and serious damage to the appliance. Use only with a cart, stand, tripod, bracket, or table recommended by the manufacturer, or sold with the unit. Any mounting of the appliance should follow the manufacturer's instructions and should use a mounting accessory recommended by the manufacturer.
- 9) Cart - An appliance and cart combination should be moved with care. Quick stops, excessive force, and uneven surfaces may cause the appliance and cart combination to overturn.



- 10) Ventilation - Slots and openings in the cabinet are provided for ventilation. To ensure reliable operation of the unit and to protect it from overheating, these openings must not be blocked or covered. The openings should never be blocked by placing the unit on a bed, sofa, rug, or other similar surface. This unit should not be placed in a built-in installation such as a bookcase or rack unless proper ventilation is provided or the manufacturer's instructions have been adhered to.
- 11) Power Sources - This unit should be operated only from the type of power source indicated on the marking label. If you are not sure of the type of power supply to your home, consult your product dealer or local power company.
- 12) Power supply cords - Do not use power supply cords other than the power cord and the AC adapter supplied with this unit.
- 13) Power Cord Protection - Power supply cords should be routed so that they are not likely to be walked on or pinched by items placed upon or against them, paying particular attention to cords at plugs, convenience receptacles, and the point where they exit from the appliance.
- 14) Overloading - Do not overload wall outlets and extension cords as this can result in a risk of fire or electric shock.
- 15) Object and Liquid Entry - Never push objects of any kind into this unit through any openings as they may touch dangerous voltage points or short-out parts that could result in a fire or electric shock. Never spill liquid of any kind on the unit.
- 16) Servicing - Do not attempt to service this unit yourself as opening or removing covers may expose you to dangerous voltage or other hazards. Refer all servicing to qualified service personnel.
- 17) Damage Requiring Service - Unplug this unit from the wall outlet and refer servicing to qualified service personnel under the following conditions:
  - a) When the power-supply cord or plug is damaged.
  - b) If liquid has been spilled, or objects have fallen into the unit.
  - c) If the unit has been exposed to rain or water.
  - d) If the unit does not operate normally by following the operating instructions. Adjust only those controls that are covered by the operating instructions as an improper adjustment of other controls may result in damage and will often require extensive work by a qualified technician to restore the unit to its normal operation.
  - e) If the unit has been dropped or damaged in any way.
  - f) When the unit exhibits a distinct change in performance, this indicates a need for service.
- 18) Replacement Parts - When replacement parts are required, be sure the service technician has used replacement parts specified by the manufacturer or that have the same characteristics as the original part. Unauthorized substitutions may result in fire, electric shock or other hazards.
- 19) Safety Check - Upon completion of any service or repairs to this unit, ask the service technician to perform safety checks to determine that the unit is in proper operating condition.
- 20) Heat - This unit should be situated away from heat sources such as radiators, heat registers, stoves, or other products (including amplifiers) that produce heat.

## Installation Location

For safety and optimum performance of this unit:

- Do not install the unit vertically. Install the unit in a horizontal and stable position.
- Do not place anything directly on top of the unit.
- Shield the unit from direct sunlight and keep the unit away from sources of intense heat.
- Avoid dusty or humid places.
- Use the unit at temperatures of 10°C - 35°C.
- Avoid places with insufficient ventilation for proper heat dissipation.
- Do not block the ventilation holes on the back of the unit.
- Avoid locations subject to strong vibration or strong magnetic fields.

## Avoid the Hazards of Electrical Shock and Fire

- Do not handle the power cord with wet hands.
- Do not pull the power cord when disconnecting it from AC wall outlet. Grasp it by the plug.
- If, by accident, liquid is spilled on this unit, unplug the power cord immediately and take the unit to our Authorized Service Center for servicing.
- Do not put your fingers or objects into the unit other than those specified in the operating instructions.

**FCC WARNING-**This equipment may generate or use radio frequency energy. Changes or modifications to this equipment may cause harmful interference unless the modifications are expressly approved in the instruction manual. The user could lose the authority to operate this equipment if an unauthorized change or modification is made.

This equipment has been tested and found to comply with the limits for a Class B digital device, pursuant to Part 15 of the FCC Rules. These limits are designed to provide reasonable protection against harmful interference in a residential installation. This equipment generates, uses, and can radiate radio frequency energy and, if not installed or used in accordance with the instructions, may cause harmful interference to radio communications.

However, there is no guarantee that interference will not occur in a particular installation. If this equipment does cause harmful interference to radio or television reception, which can be determined by turning the equipment off and on, the user is encouraged to try to correct the interference by one or more of the following measures:

- 1) Reorient or relocate the receiving antenna.
- 2) Increase the separation between the equipment and receiver.
- 3) Connect the equipment to an outlet on a circuit different from that to which the receiver is connected.
- 4) Consult the dealer or an experienced radio/TV technician for help.

### Canadian DOC statement

**DOC Class B Compliance** - This Class B digital apparatus complies with Canadian ICES-003.

## Before Use

- Please read this User's guide carefully before using your photo printer, and keep it for future reference.
- This unit is intended for household use only.

For Customer Use:

Read carefully the information located at the back of this unit and enter the Numbers below. Retain this information for future reference.

Model No. \_\_\_\_\_

Serial No. \_\_\_\_\_

## Declaration of Conformity

We declare under our sole responsibility that this product, to which this declaration relates, is in conformity with the following standards:

EN60950-1, EN55022, EN55024, EN61000-3-2 and EN61000-3-3. Following the provisions of 73/23/EEC, 89/336/EEC and 93/68/EEC Directive.



## About Recycling

- This product and the accessories packed together are the applicable product to the WEEE directive.
- This product's packaging materials are recyclable and can be reused.
- Please dispose of any materials in accordance with your local recycling regulations. When discarding the unit, comply with your local rules or regulations.



## Connection to Power (For UK)

Before Switching on make sure that the voltage of your electricity supply is the same as that indicated on the rating plate.

### ◆ Mains Cord

This appliance may be fitted with a non-rewireable plug. If it is necessary to change the fuse in a nonrewireable plug the fuse cover must be refitted. If the fuse cover is lost or damaged, the plug must not be used until a replacement available from the appliance manufacturer is obtained.

It is important that the colour of the replacement fuse cover corresponds with the rating marking on the base of the plug.

If the plug has to be changed because it is not suitable for your socket, or becomes damaged, it should be cut off and an appropriate plug fitted following the wiring instructions below. The plug removed must be disposed of safely as insertion into a 13A socket is likely to cause an electrical hazard. For your own safety read the following instructions carefully before attempting to connect this unit to mains.

The wires in this mains lead are coloured in accordance with the following code:

BLUE=NEUTRAL, BROWN=LIVE

### ◆ Important

As the colours of the wires in the mains lead of this appliance may not correspond with the coloured markings identifying the terminals in your plug, proceed as follows:

The wire which is coloured blue must be connected to the terminal which is marked with the letter N or coloured black.

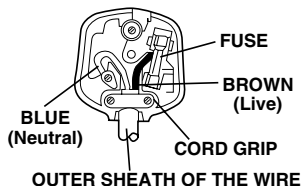
The wire which is coloured brown must be connected to the terminal which is marked with the letter L or coloured red.

No connection is to be made to the earth terminal of the plug.

If a 13 Amp (BS 1363) Plug is used, a 3 Amp Fuse must be fitted, or if any other type of Plug is used a 3 or 5 Amp Fuse must be fitted, either in the Plug or Adaptor, or on the Distribution Board.

Mains Supply: 220 - 240 V  $\sim$  50 Hz - AC only

Do not make any connection to the larger pin marked with the letter "E" or by the symbol  $\perp$  or coloured green or green and yellow.





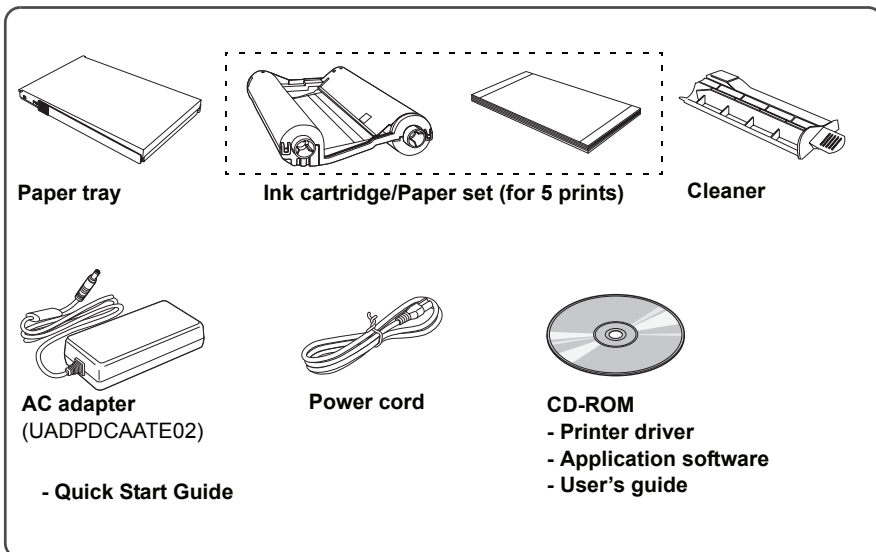
# Introduction

- Please read the FUNAI SOFTWARE LICENSE AGREEMENT described on page 43 in this User's guide carefully.

## Introduction

### Standard Accessories

Please check and make sure that you have all items listed below:



- Refer to optional accessories (Paper/Ink cartridge) on page 22.

### Notice

- In this User's guide, "camera" refers to digital devices such as digital cameras or digital video cameras which are compatible with PictBridge-standard.
- No person shall duplicate, photocopy, or reproduce any part of the User's guide.
- All information included herein is subject to change without notice.
- We shall not be responsible for any loss, damages, direct or indirect, arising from or related to improper use of this product.

## Copyrights

- Whatever you have printed can be used for your personal entertainment only. Under copyright laws, other materials cannot be used without obtaining permission from the holders of the copyrights.

## Trademarks

- Microsoft® and Windows® are registered trademarks of Microsoft Corporation in the United States and/or other countries.
- Macintosh and Mac OS are either registered trademarks or trademarks of Apple Computer Inc. in the United States and/or other countries.
- Adobe® is registered trademark or trademark of Adobe Systems Incorporated in the United States and/or other countries.
- Adobe® Reader® and Adobe® Photoshop® Album Starter Edition are free version of Adobe products.
- Other names and products mentioned in this User's guide may be registered trademarks or trademarks of their respective companies.

## Others



:This mark denotes precautions or issues that may affect the operation or maintenance of the printer.



:This mark denotes supplementary information or tips in use.

# Features

## ◆ Direct print

Images in the camera which is compatible with PictBridge-standard can be printed easily by connecting with the printer.

## ◆ Printing from your computer

Images can be printed from your computer.  
(Windows/Macintosh)

## ◆ Multiple image print (2/4/9/16 split)

Same images can be printed on one sheet of paper.

## ◆ Index print\*

Images in the camera are printed as view format.  
42 images can be printed on one sheet of paper.

## ◆ Image correction

Brightness, contrast, and color saturation of the images can be adjusted to print from the computer.

## ◆ DPOF print\*

Only the images specified with DPOF settings on the camera can be printed automatically.

## ◆ Date print\*

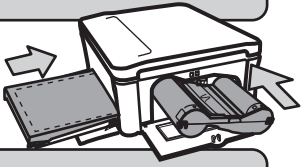
Images can be printed with shooting date.

\*Some functions cannot be used depending on the type of camera.

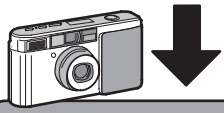
# Flow of the Printer Operation

You can print in the following order. For actual operating, refer to the page indicated below.

**Insert the Ink cartridge.→ p.23**



**Set the paper.→ p.25, 26**



## Camera printing

**Plug the power cord→ p.27**



**Connect the camera with the printer.→ p.28**



**Print images from the camera. → p.29**



## Computer printing

**Install the printer driver.  
→ p.31**



**Plug the power cord.  
→ p.27**



**Connect the computer with the printer. → p.33**



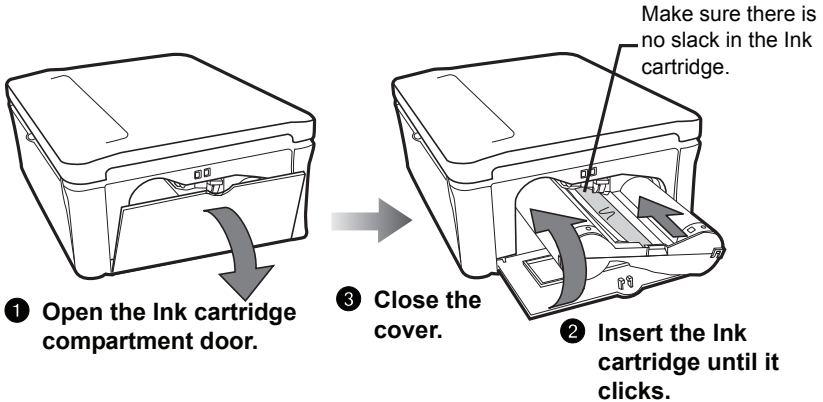
**Print images from the computer.→ p.34**

## Quick Guide

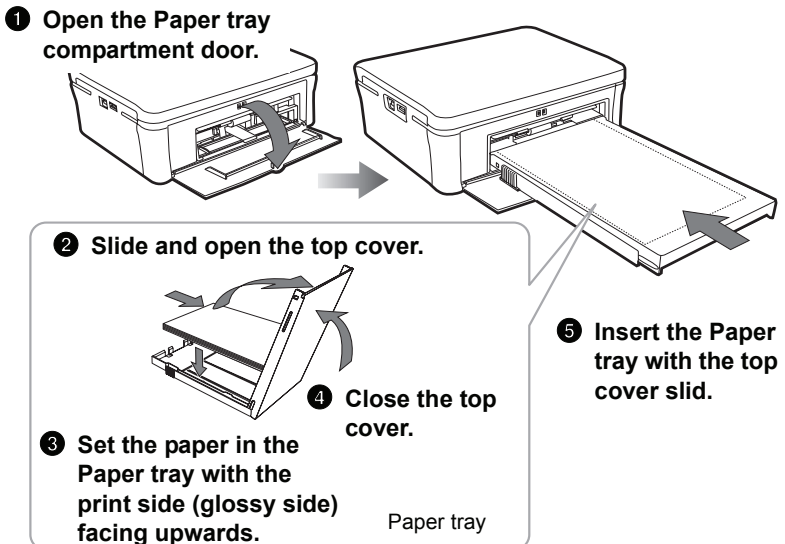
Let's try to print images by connecting the printer with the camera.

- Refer to the pages below for the details.

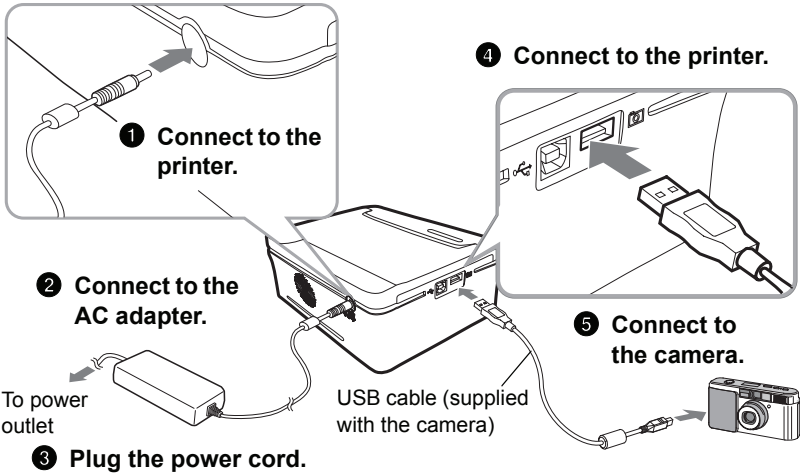
### 1 Inserting the Ink cartridge. → p.23



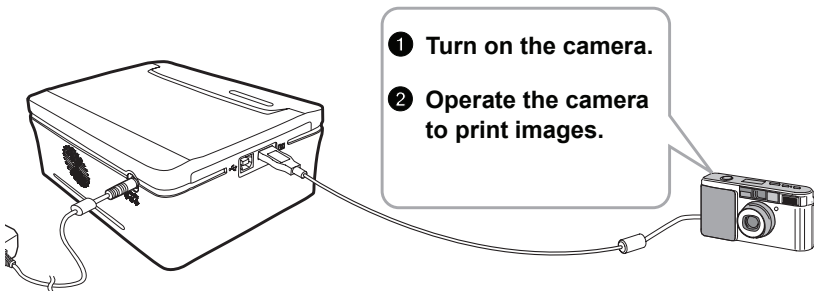
### 2 Setting the paper. → p.25, 26



### 3 Connecting → p.28



### 4 Printing → p.29



- Printing method varies depending on the camera models. Refer to the user's guide of the camera.

## Safety Precautions

Before using the printer, read the safety precautions and follow them, or there may be fire, electric shock, injuries or malfunction.

### WARNINGS

- **Do not disassemble or remodel the printer.**
- **Do not use the printer if the printer is dropped or the casing becomes damaged.**
- **Unplug the power cord immediately if the printer emits smoke or abnormal odor, or shows other signs of significant malfunction.**
- **Do not place liquid containers such as glasses, vases or flowerpots on the printer for preventing water or foreign objects from getting into the printer.**
- **Do not drop or insert foreign objects such as metallic or flammable objects.**
- **Do not touch the power plug during thunderstorms to avoid electric shock.**
- **Do not damage the power cord.**  
**Unplug the power cord immediately if it becomes damaged, and consult your dealer.**  
Do not handle the power cord in the following manner.
  - Pulls the power cord forcibly.
  - Binds up the power cord.
  - Converts the power cord.
  - Bends or twists the power cord excessively.
  - Heats the power cord.
  - Rests heavy objects on the power cord.
- **Do not operate the printer outside of the specified voltage rating.**
- **Do not handle the power cord with the wet hands.**
- **Do not use the AC adapter or the power cord other than those specified.**
- **Do not use the AC adapter or the power cord supplied with the printer for other products.**
- **Do not install the printer on an unstable or tilted table.**
- **Do not let the printer get wet.**
- **Do not plug too many leads into a single socket.**

## CAUTIONS

- **Do not install the printer in the following places.**
  - Smoky or dusty places
  - Places subject to direct sunlight
  - Steamy places
  - Places close to heating equipment
  - Places subject to high temperature such as sun-heated cars
- **Do not place heavy objects on the printer.**
- **Do not get on top of the printer.**
- **Unplug the power cord of the printer when the printer is not in use.**
- **Do not move the printer while being plugged in.**
- **Remove dust or other foreign matters adhering to the power plug periodically.**
- **Confirm that the power cord is plugged into the power outlet firmly.**
- **Do not plug/unplug the power cord with the wet hands.**
- **Do not block the air vents on the printer.**
- **Do not reach into internal parts of the printer other than those specified in the User's guide.**
- **Do not install the printer in narrow or ill-ventilated places.**
  - Do not install the printer on the bookshelves or into the closet.
  - Do not install the printer on the carpet or mattress.
  - Do not cover the printer with table cloth and like that.
- **Unplug the power cord before cleaning or maintenance.**
- **Do not remove the Paper tray during printing.**
- **Do not use the printer near open flames.**



## Usage/Handling Note

### Location Notes

- **Do not install the printer in humid or dusty places.**
- **Leave approx. 20 cm of clearance at the front/back side of the printer.**  
Make sure to leave clearance around the paper-handling slot so that paper has room enough to jut out from the slot during printing.  
Do not let the cables get tangled around the paper-handling slot.
- **Do not install the printer near strong magnets or devices that produce strong electromagnetic fields.**  
Electromagnetic radiation from devices such as TVs, mobile-phones and speakers may cause distortion in printed images.
- **Do not install the printer vertically.**

### Handling/Maintenance Notes

- **Unplug the power cord from the power outlet when the printer is not in use.**  
Note that you should plug in and operate the printer at least once every 6 months to ensure the printer remains functional.
- **When the printer is not in use for extended period, eject the Ink cartridge and the Paper tray from the printer.**  
Paper may deteriorate due to dust or damp. Remove the unused paper from the Paper tray, put it into the original bag, and store the bag horizontally.  
Use the supplied cleaner before printing if the printer has not been used for extended period. → p.41
- **When using insecticides or other volatile solvents in the vicinity of the printer, keep the printer off these solvents.**  
**Do not allow rubber or vinyl materials to remain touched with the printer for a long time.**  
These materials may cause deformation of the printer's casing.
- **To clean the printer, wipe up any dust with a soft and dry cloth. If the printer is heavily dirty, soak the cloth in mild kitchen detergent diluted with water and wipe off the dust with the cloth and wipe again with dry cloth.**  
Do not use solvents such as benzene and paint thinner to wipe the printer. It may result in coming off the surface of the printer or deformation of the printer's casing.
- **Before transporting the printer, remove the Paper tray and the Ink cartridge, close the compartment doors, and put the printer into the original package or wrap it with soft cloth.**

## Notes in Printing

- **Do not remove the Ink cartridge or Paper tray forcibly during printing.**  
It may cause malfunction.
- **Do not add any oscillation or shock to the printer.**  
It may cause malfunction.
- **Do not allow more than 10 sheets of printed paper to accumulate on the print output receptacle (on the top cover of the Paper tray).**  
It may cause paper jam.
- **Do not touch the paper during printing.**  
It may cause malfunction.
- **Do not turn on and off the printer needlessly to avoid waste of the Ink cartridge. The allotted number of sheets of paper may not be printed.**
- **The printer may temporarily stop operating due to ambient temperature or internal temperature of the printer. It is not caused by malfunction.**  
The printer will resume normal printing when it cools down. Halting a printing process temporarily is most likely to occur in the following cases:
  - ① When printing continuously
  - ② When ambient temperature is excessively high
  - ③ When the air vents on the backside of the printer are blocked or ventilation is inadequate

## Paper/Paper Tray Notes

- **Use the specified types of paper for the printer.**
- **Set the paper in the Paper tray with the print side (the glossy side ) facing upwards.**  
Fan a stack of paper to remove static cling and set the paper not to stick out of the Paper tray.
- **Do not touch the print side of the paper with your fingers.**  
Keep the paper surface free from fingerprints, flaws, dust, and oil spots, etc., or clear images may not be printed.
- **Do not tear or bend the paper's perforated line before printing.**  
Such paper cannot be used.
- **Do not bend or fold the paper.**
- **Up to 20 sheets of paper can be set in the Paper tray.**  
Do not set more than 20 sheets of the paper for preventing paper jam.
- **Do not write characters and like that on the paper before printing.**  
It may cause malfunction.
- **Do not reuse the paper that has already been printed.**  
It may cause malfunction.

## Prints Notes

- **Do not touch the printed surface with adhesive tape, rubber goods or plastic, etc., and do not leave the printed surface in contact with other objects.**  
It may cause color loss, change of color or color transfer.
- **Select albums with nylon-based sleeves, polypropylene sleeves or cellophane sleeves for storing prints.**  
Other type of sleeves may cause color loss or change of color.
- **To avoid print quality deterioration, do not store prints under the following conditions:**
  - Locations exposed to direct sunlight
  - High temperatures (above 40 °C)
  - High humidity
  - Dust-laden environment
- **Even if prints are stored avoiding the conditions above, change of color or print quality deterioration may occur.**

## Ink Cartridge Notes

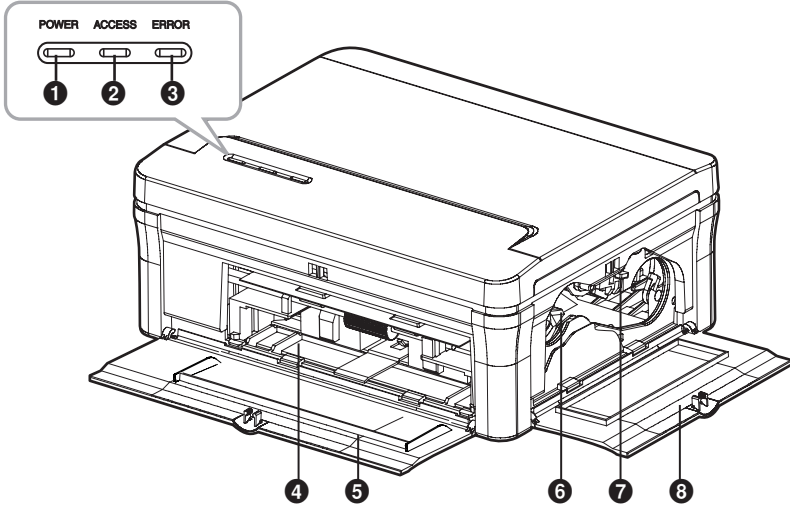
- **Use the specified Ink cartridge for the printer.**
- **Do not touch the Ink ribbon or pull it out from the Ink cartridge.**  
The allotted number of sheets of paper may not be printed.
- **Rotate the screw hole of the Ink cartridge in the direction of the arrow with the screw hole pressed to remove slack of the Ink ribbon and then insert the Ink cartridge.**
- **Confirm the direction of the Ink cartridge and insert all the way into the Ink cartridge slot.**
- **Do not reuse the Ink cartridge that has already been consumed.**

## Condensation Notes

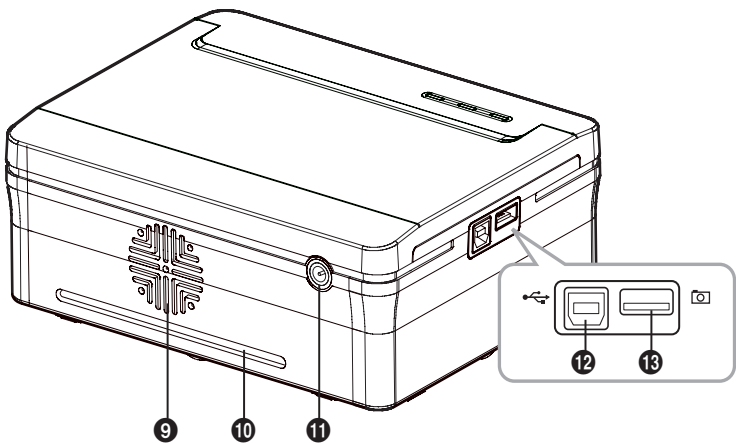
- **If condensation forms inside the printer, stop using the printer and leave it at ordinary temperatures until the water droplets have evaporated completely.**  
Water droplets will form on the windows of the warm room. These droplets are called condensation. They can form on the printer, the Ink cartridge, the Paper tray, and the paper when transporting these items from cold place to warm place.
- **If condensation forms on the Ink cartridge, the Paper tray or the paper, wipe off the water droplets and allow to reach to room temperature before use.**
- **When transporting the printer, including the Ink cartridge, the Paper tray, and the paper from cold place to warm place, seal them into a plastic bag to avoid condensation. Then allow to reach to ambient temperature before use.**

# Controls and Components

## ◆ Printer (Front view)



## ◆ Printer (Back view)



- 1 [POWER] Lamp**  
Lights up when the printer is plugged to the power outlet. Connect the printer to the AC adapter (supplied), and connect the AC adapter to the power outlet.
- 2 [ACCESS] Lamp**  
Lights up when the printer is connected to the computer/camera.
- 3 [ERROR] Lamp**  
Lights up if an error (such as paper out) has been detected.
- 4 Paper Tray Slot**  
Inserts the Paper tray into this slot.
- 5 Paper Tray Compartment Door**  
Opens this door when inserting the Paper tray. Close it when the printer is not in use.
- 6 Ink Cartridge Slot**  
Inserts the Ink cartridge into this slot.
- 7 Ink Cartridge Eject Lever**  
Presses up the lever to remove the Ink cartridge.
- 8 Ink Cartridge Compartment Door**  
Opens this door to insert/remove the Ink cartridge. Close it when using the printer.
- 9 Air Vent**  
Prevents the printer from rising its internal temperature excessively.
- 10 Paper-handling Slot**  
Protrudes the paper from this slot during printing. Do not touch the protruding paper.
- 11 DC IN Terminal**  
Connects the AC adapter to supply the power.
- 12 USB Port**  
Connects the USB cable (sold separately) to this port for using the printer with a computer.
- 13 PictBridge Port**  
Connects the USB cable (supplied with the camera) to this port for using the printer with a PictBridge-compliant camera.

## Paper/Ink cartridge

Use the following paper. (Use the Ink cartridge included in the print set.)

### ◆ Postcard size paper (100 x 148 mm)

Print set :FCP-40P

Postcard size paper (40 sheets)/Ink cartridge (for 40 prints).



- Do not disassemble the Ink cartridge.
- Do not open the print set (paper/Ink cartridge) until you use it.

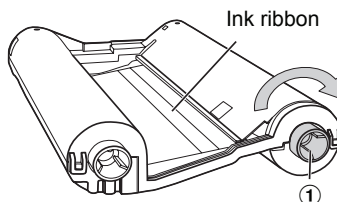
# Prepare

Please use the specified paper and Ink cartridge.

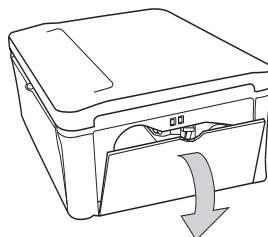
## Set the Ink Cartridge in the Printer

### 1 Confirm that there is no slack in the Ink cartridge.

- If the Ink ribbon is slack, turn ① to the direction of the arrow pressing ① in until the Ink ribbon is strained. (You cannot print allotted sheets of paper in the print set if you turn around ① too much.)

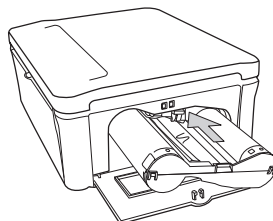


### 2 Open the Ink cartridge compartment door.

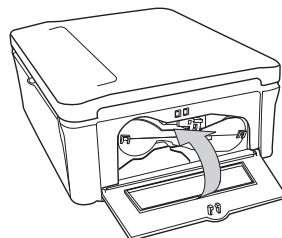


### 3 Insert the Ink cartridge all the way into the Ink cartridge slot until it clicks.

- Confirm that the direction of the Ink cartridge is correct before inserting it.

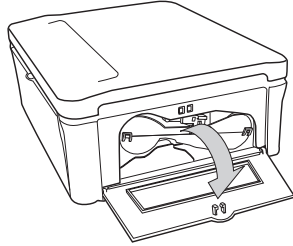


### 4 Close the Ink cartridge compartment door.



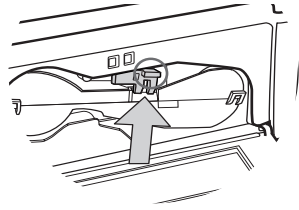
## How to Eject the Ink Cartridge

- 1 **Open the Ink cartridge compartment door.**

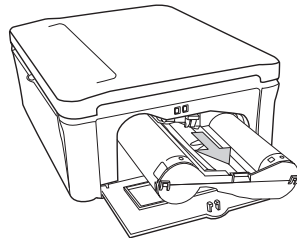


- 2 **Press up the Ink cartridge eject lever.**

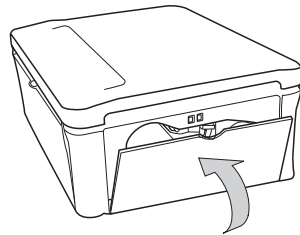
- The Ink cartridge is flipped out of the Ink cartridge slot.



- 3 **Pull out the Ink cartridge horizontally.**



- 4 **Close the Ink cartridge compartment door.**



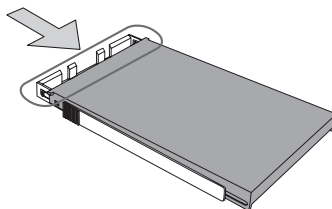
- Never reuse the Ink cartridge that has been already consumed. It may cause malfunction.
- Do not touch the Ink ribbon or pull it out of the Ink cartridge.
- Exchange a new Ink cartridge if it has worn out.



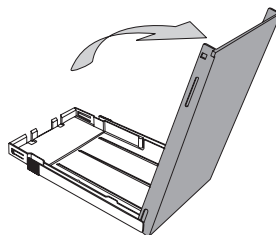
## Set the Paper in the Paper Tray

Do not use the paper other than the specified paper.

- 1 Slide the top cover of the Paper tray to the direction of the arrow.

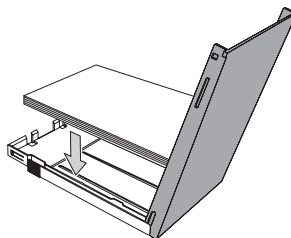


- 2 Open the top cover.

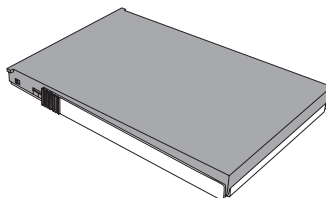


- 3 Set the paper in the Paper tray with the print side (glossy side) facing upwards.

- Do not set more than 20 sheets of the paper in the Paper tray.
- Do not have the paper stuck out of the Paper tray.
- Do not touch the print side of the paper.  
→ p. 18
- Do not tear or bend the paper's perforated line before printing. → p. 18

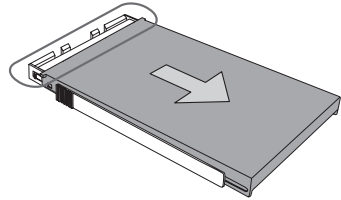


- 4 Close the top cover.

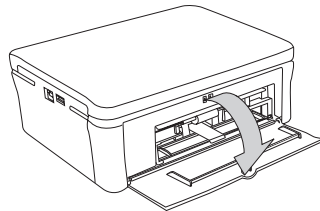


## Set the Paper Tray in the Printer

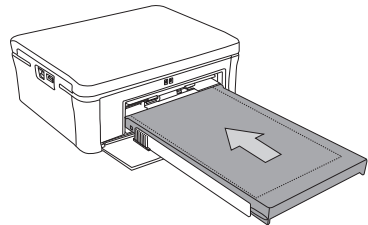
- 1 Slide the top cover of the Paper tray to the direction of the arrow.



- 2 Open the Paper tray compartment door.



- 3 Insert the Paper tray horizontally into the Paper tray slot.



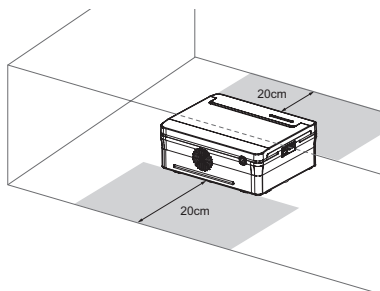
### ◆ How to reject the Paper Tray

Pull the Paper Tray out horizontally and close the Paper tray compartment door.

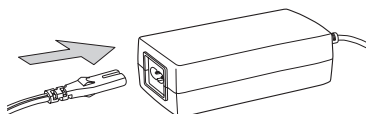
## Turning on the Power (Connecting)

### 1 Place the printer on a flat area.

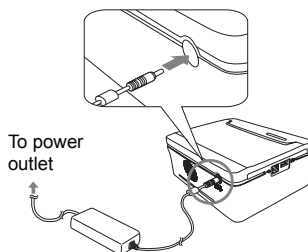
- Do not place any obstacles within 20 cm of the front/back side of the printer. Paper moves in and out to/from the slot during printing.



### 2 Connect the power cord to the AC adapter.



### 3 Connect the AC adapter to the DC IN terminal of the printer.



### 4 Plug the power cord (connected to the AC adapter) into a power outlet.

- The printer turns on, and the [POWER] lamp lights.

#### ◆ How to turn off the power

Disconnect the power cord from the power outlet, so the [POWER] lamp goes out and turn off the power.

# Printing from the Camera

## Printing from the Camera (PictBridge Printing)

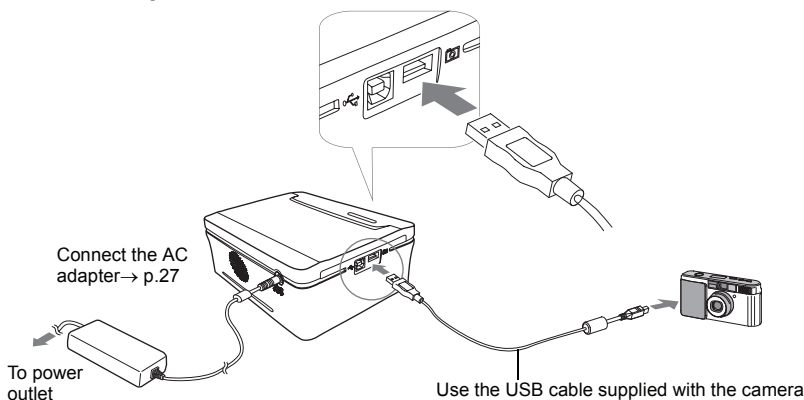
Connecting the camera with the printer, you can print images directly by the operation of the camera.

- Images can be printed directly with the camera which is compatible with “PictBridge” standard.
- It may be necessary to switch the camera to the “PictBridge” mode before connecting to the printer. Configure the setting of the camera according to the user’s guide of the camera.

## Connecting to the Camera

Set the paper and the Ink cartridge. → p.23-26



### 1 Connect the printer to the camera.



### 2 Turn the camera's power on.

- The [ACCESS] lamp lights.
- Images can be printed by operating the camera.



- For the details, refer to the user's guide of the camera.
- Some camera models automatically turn the power on when the cable is connected to the printer.
-  is written in the manual of cameras compatible with PictBridge-standards, and  is displayed on the LCD monitor of some camera models when connecting to the printer.
- When disconnecting the cable, follow the user's guide of the camera.

## Printing from the Camera

1

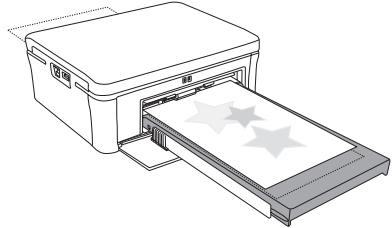
### Perform the printing operation from the camera.

- Printing operation is performed viewing the LCD monitor of the camera.
- The operation method varies depending on the camera specification. Refer to the user's guide of the camera.

2

### The printer starts printing.

- The paper is moved forward and backward several times and the printed paper exits on the top cover of the Paper tray. That is the end of printing process.
- Do not disconnect the cable while printing.



#### ◆ About print settings:

- Some items cannot be selected depending on the camera models. In that case, images are printed as follows. (the default settings of the printer)
  - ① **Paper size**  
Images are printed in accordance with the size of paper set in the Paper tray.
  - ② **Layout specification**  
Images are printed with [Borderless].
  - ③ **Date**  
Date is not printed. (Date is printed if it is set to "ON" in the camera.)



- When the error occurs while printing, the error message is displayed on the LCD monitor of the camera. → p.36
- "Standard Setting" or "Follow the Printer Setting" may be selectable in some camera models. When selecting them, images are printed with the default settings above.
- When printing from the camera, you are recommended to use a domestic power supply as the power source of the camera.

# Printing from the Computer

## System Requirements

Please install the printer driver on a computer meeting the following minimum requirements.

### Windows

<b>OS</b>	Windows XP (Including Service Pack 1 and Service Pack 2) Windows 2000 Service Pack 4
<b>Computer Model</b>	The above OS should be pre-installed on computers with a built-in USB port.
<b>CPU</b>	Pentium 500 MHz or higher processor
<b>RAM</b>	256 MB or more
<b>Interface</b>	USB
<b>Free Hard Disk Space</b>	500 MB or more
<b>Display</b>	1,024×768 pixels/High color (16bit) or better

### Macintosh

<b>OS</b>	Mac OS X (v10.2 - v10.3)
<b>Computer Model</b>	The above OS should be pre-installed on computers with a built-in USB port.
<b>CPU</b>	PowerPC G3/G4/G5
<b>RAM</b>	256 MB or more
<b>Interface</b>	USB
<b>Free Hard Disk Space</b>	500 MB or more
<b>Display</b>	1,024×768 pixels/32,000 colors or better

- A CD-ROM drive is required to install the printer driver.
- It is not necessarily guaranteed that the printer driver functions in all the computer which meets the system requirements.

## Installing the Printer Driver

The CD-ROM contains the printer driver required for printing from your computer. Install the printer driver according to the following steps.

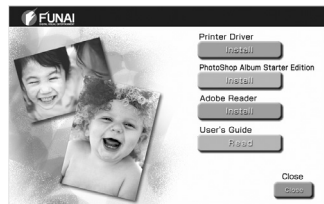
### Windows

- Be sure to install the printer driver before connecting the printer with the computer. (During the installation, if the message says that the printer should be connected to the computer, follow the message.)
- Be sure to log on with administrator privileges (computer system administrator) when installing the printer driver.

#### 1 Close any programs that are running.

#### 2 Place the CD-ROM disc in the CD-ROM drive.

- The pop-up menu appears automatically. If the pop-up menu does not automatically appear, display the pop-up menu in the following steps:
  - For Windows XP, click the [start] button and select [My computer], then double-click the CD-ROM icon in the next windows.
  - For Windows 2000, double-click the [My computer] icon on the desktop screen, and double-click the CD-ROM icon in the next window.



#### 3 Click "Install" of the Printer Driver.

- The install starts.

#### 4 Follow the screen messages to proceed.

## Macintosh

- When installing on Mac OS X 10.2, be sure to connect the printer with the computer by the USB cable (commercial item) and turn on the printer before installing the printer driver.
- When installing on Mac OS X 10.3, install the printer driver and then connect the printer with the computer by the USB cable (commercial item) and turn on the printer.
- Be sure to log on with administrator privileges when installing the printer driver. And enter password if it is required.

---

**1** Close any programs that are running.

---

**2** Place the CD-ROM disc in the CD-ROM drive.

---

**3** Select “Mac” folder in the CD-ROM disc and double-click “FunaiFDP100.dmg”.

---

**4** Double-click “FunaiFDP100.pkg”.

---

**5** Follow the screen messages to proceed.



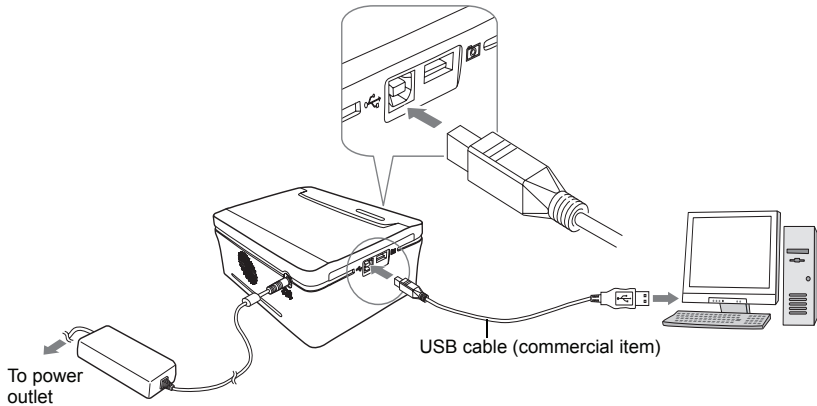
- When printing on MacOS X 10.2, additional packages may be required to install depending on the application used for printing. For details refer to “Mac” folder in the CD-ROM.



## Connecting the Printer to a Computer

- Connects the printer to the computer by the USB cable (A-B type / commercial item).
- Confirm that a camera is not connected with the printer before connecting it to the computer.

- 1 **Connect one end of the USB cable (commercial item) to the USB port on the printer and the other end to a USB port on your computer.**



- When connecting the printer to your computer, make sure that the connectors on the ends of the USB cable match the ports on the printer and on your computer. For the location and the terminal form of the USB port on your computer, refer to the user's guide of your computer.

- 2 **Confirm that the [ACCESS] lamp lights.**



- Connect the printer directly to the USB port of your computer with the USB cable. (Do not connect to the USB port on the USB keyboard.)
- When connecting the printer, do not use other USB devices (with the exception of a USB mouse or USB keyboard). The printer may not function properly.

# Printing from the Computer

**1 Display/Select an image to be printed on your application.**

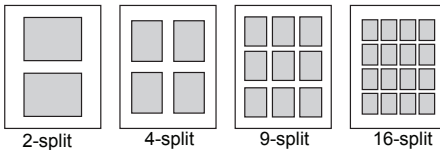
**2 Display the print screen and set the printer name to “FUNAI FDP-100” (“FDP-100” (Mac OS)).**

- Printing and printer selection methods varies depending on the application. Refer to the user's guide of your application.

**3 Display the details screen.**

**4 Set “Print direction”, “Layout specification” and “No. of copies”.**

- The same images are printed on one sheet of paper by the specified number of splits.
- Split specification cannot be selected when selecting “Borderless”.
- Selectable split number is as follows.



**5 Click “Image processing setting”, and drag the “ ” to manipulate an image.**

<b>Brightness</b>	Adjust brightness.
<b>Contrast</b>	When sliding it to the strong side, the image becomes distinct, and when sliding it to the weak side, a middle tone increases and the image lacks depth in color.
<b>Saturation</b>	When sliding it to the increase side, the dull image becomes vivid.

**6 Click “OK”.**

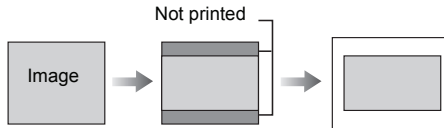
- The print screen is displayed.

## 7 Start printing.

- The status monitor is displayed while printing and the information such as file name and printing status are displayed on the status monitor.



- Refer to "Error Messages" if error messages are displayed. → p.36
- Depending on dimensions of an image, the whole image may not be printed.



## Uninstalling the Printer Driver

### Windows

- 1 Place the CD-ROM disc in the CD-ROM drive.
- 2 Click "Uninstall" of the Printer Driver.
- 3 Follow the screen messages to proceed.

### Macintosh

- 1 Click "Applications" ▶ "Utilities" folder, and double-click "Printer Setup Utility" ("Printer Center") icon.
- 2 Select "FDP-100" and click "Delete".

# Appendix

## If Errors have Occurred...

### Error Messages

#### ◆ When connecting with a camera:

If an error (such as print error) has been detected when connecting with a camera, the error message is displayed on the LCD monitor of the camera.

- The following is an example of error messages.
- Error messages vary in some measure by the camera models.
- Some cameras may have no error messages displayed on the LCD monitor.

#### ◆ When connecting with a computer:

If an error (such as print error) has been detected when connecting with a computer, the error message is displayed on the computer monitor.

Monitor Display Examples	Status of the Printer/Solution	Page
No paper	● The printer has no paper in the Paper tray. Set paper in the Paper tray.	25
Wrong paper/ribbon	● Specified paper or Ink ribbon is not set. Check that the specified paper and Ink cartridge are set.	22,26
The ribbon cartridge is depleted	● The Ink ribbon in the Ink cartridge has been consumed. Insert a new Ink cartridge.	23
Mismatch between printed data and loaded paper	● Paper in the Paper tray or the Ink cartridge does not match the printing data. Use the specified paper or Ink cartridge for the printing data.	22
No ribbon cartridge	● The printer has no Ink cartridge. Insert the Ink cartridge all the way in the Ink cartridge slot until it clicks.	23
No paper cartridge	● The printer has no Paper tray. Insert the Paper tray into the printer firmly.	26
Paper stack	● Paper jam has occurred. Turn off the printer and turn on again, so the paper is discharged from the printer.	40
Wrong paper tray/paper	● Specified paper is not set. Set the specified paper into the Paper tray.	22
Marker detect error	● Remove the Ink cartridge and take up the slack. Then insert it again.	23

Monitor Display Examples	Status of the Printer/Solution	Page
<b>Other paper errors</b>	<ul style="list-style-type: none"> <li>• More than 2 sheets of paper are sent inside of the printer at a time as the paper sticks together and like that. Turn off the printer and turn on again, so the paper is discharged from the printer.</li> <li>• Paper jam has occurred. Turn off the printer and turn on again, so the paper is discharged from the printer.</li> </ul>	40
<b>File error</b>	<ul style="list-style-type: none"> <li>• The printer failed to get DPOF setting information. Check if the DPOF settings are correctly configured.</li> <li>• An image that is not supported by the printer is tried to be printed.</li> </ul>	-

## [ERROR] Lamp

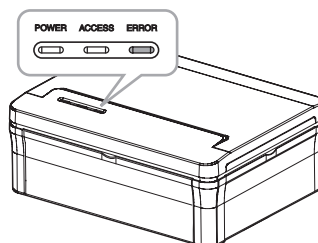
The [ERROR] lamp lighting indicates the following probable causes.

### ◆ About the paper:

- Paper jam has occurred.
- The Paper tray is not set.
- There is no paper in the Paper tray.
- Specified paper is not set in the Paper tray. (Set the paper supplied with the Ink cartridge.)

### ◆ About the Ink cartridge:

- The Ink cartridge is not set.
- The Ink ribbon in the Ink cartridge has been consumed.(The [ERROR] lamp flashes.)



## Before Requesting Services

### Troubleshooting

If the printer is not responding properly, check the following items before requesting services.

#### ◆ General printer problems

Symptom	Possible cause	page
<b>The [POWER] lamp does not light on.</b>	<ul style="list-style-type: none"> <li>The power cord or the AC adapter is not connected correctly.</li> </ul>	27
<b>Print fails.</b>	<ul style="list-style-type: none"> <li>The Ink cartridge is not inserted with the correct orientation into the Ink cartridge slot firmly.</li> </ul>	23
	<ul style="list-style-type: none"> <li>The Ink ribbon is slack.</li> </ul>	23
	<ul style="list-style-type: none"> <li>The paper is not set.</li> </ul>	25, 26
	<ul style="list-style-type: none"> <li>Specified paper is not set.</li> </ul>	22
	<ul style="list-style-type: none"> <li>The paper is set inside out.</li> </ul>	25
	<ul style="list-style-type: none"> <li>The Ink ribbon in the Ink cartridge has been consumed.</li> </ul>	23, 24
	<ul style="list-style-type: none"> <li>Images which are not supported by the printer are tried to be printed. Exif-JPEG images are supported by the printer.</li> </ul>	-
<b>It takes long time to print images.</b>	<ul style="list-style-type: none"> <li>Condensation forms inside the printer. Leave it for a while. (approx. 1-2 hours)</li> </ul>	19
	<ul style="list-style-type: none"> <li>High resolution images are tried to be printed. It takes long time to read such images.</li> </ul>	-
<b>Images cannot be printed clearly.</b>	<ul style="list-style-type: none"> <li>The internal temperature of the printer is too high. Wait for a while. (The printer will resume printing.)</li> </ul>	-
	<ul style="list-style-type: none"> <li>Specified paper is not set.</li> </ul>	22
	<ul style="list-style-type: none"> <li>The paper is not set correctly.</li> </ul>	25
	<ul style="list-style-type: none"> <li>The Ink ribbon or paper is dirty. Insert the clean Ink cartridge or paper.</li> </ul>	23, 25
<b>The printed images are distorted.</b>	<ul style="list-style-type: none"> <li>Internal part of the printer gets dusty. Clean it with the supplied cleaner.</li> </ul>	41
	<ul style="list-style-type: none"> <li>The printer is installed near a TV, a video game or other devices that radiate electromagnetic waves. Keep the printer off these devices while printing.</li> </ul>	-
	<ul style="list-style-type: none"> <li>The printer is installed near a stereo speaker, large monitor or other devices that generate a strong magnetic field. Keep the printer off these devices while printing.</li> </ul>	-

Symptom	Possible cause	page
<b>Paper jams occur frequently.</b>	<ul style="list-style-type: none"> <li>More than 20 sheets of paper are set in the Paper tray. Up to 20 sheets of paper can be set.</li> </ul>	25
	<ul style="list-style-type: none"> <li>The paper creases or warps. Use the flat paper.</li> </ul>	-
	<ul style="list-style-type: none"> <li>Too many sheets of paper are accumulated on the print output receptacle (on top of the Paper tray). Do not allow more than 10 sheets of printed paper to be accumulated.</li> </ul>	-
<b>The full picture is printed with upper/lower parts of the image cutting off.</b>	<ul style="list-style-type: none"> <li>Depending on dimensions of an image, the whole image may not be printed.</li> </ul>	35
<b>The allotted number of sheets in the print set cannot be printed.</b>	<ul style="list-style-type: none"> <li>Turning on and off needlessly may cause the printer to miss printing the allotted number of sheets. (When turning on the printer, the Ink ribbon is wound a bit for initialization.)</li> </ul>	-
	<ul style="list-style-type: none"> <li>Pulling the Ink ribbon out may cause the printer to miss printing the allotted number of sheets.</li> </ul>	-
	<ul style="list-style-type: none"> <li>If the paper's perforated line is torn or bent, that paper cannot be used for printing.</li> </ul>	-

◆ **Problems in printing from the camera:**

Symptom	Possible cause	page
<b>Print fails.</b>	<ul style="list-style-type: none"> <li>The printer is not connected with the camera correctly. (Use the USB cable supplied with the camera)</li> </ul>	28
	<ul style="list-style-type: none"> <li>Your camera does not support PictBridge printing.</li> </ul>	28
	<ul style="list-style-type: none"> <li>It may be necessary to switch the camera to the "PictBridge" mode before connecting to the printer.</li> </ul>	28
	<ul style="list-style-type: none"> <li>Printing operation is required from the camera. Refer to the user's guide of the camera.</li> </ul>	29
<b>How to stop printing in progress?</b>	<ul style="list-style-type: none"> <li>Stop printing by operation of the camera.</li> </ul>	-
<b>Index print or multiple image print function cannot be used.</b>	<ul style="list-style-type: none"> <li>If the camera does not have such functions as Index print or multiple image print, these functions cannot be used on the printer.</li> </ul>	-
<b>Some images are not printed in the index-prints.</b>	<ul style="list-style-type: none"> <li>Images not supported by the printer are not printed. (Parts of these images remains blank.)</li> </ul>	-

Symptom	Possible cause	page
<b>More than 2 sheets of paper are printed.</b>	● If the DPOF settings are configured on the camera, all of the DPOF setting images are printed.	-
	● The number of paper specified on the camera is printed.	-
<b>Prints has no shooting date.</b>	● Shooting date (time) can be printed only if the date print function of the camera is activated.	29

#### ◆ Problems in printing from the computer

Symptom	Possible cause	page
<b>Print fails.</b>	● The printer is not connected with the computer correctly. (Use the USB cable for the computer)	33
	● The printer driver is not installed on the computer. Install the printer driver in the supplied CD-ROM, and then connect the printer with the computer.	31, 32
	● Another printer is selected for printing on the computer. Select this printer and then print images.	-
	● Set the specified paper.	22
	● Both a camera and a computer are connected to the printer. Images cannot be printed from the computer if a camera is connected to the printer. Disconnect the camera from the printer.	-
<b>How to stop printing in progress?</b>	● Clicking [Print cancel] on the computer can stop printing images.	-

### If Paper Jam has Occurred...

Remove the paper in the following steps when the paper jam has occurred.

1

**Unplug the power cord from the power outlet.**

2

**Plug the power cord after approx. 10 seconds.**

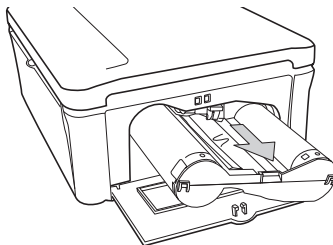
- The paper is discharged from the printer automatically.
- Do not remove the paper from the printer forcibly. It may cause malfunction.



## Using the Cleaner

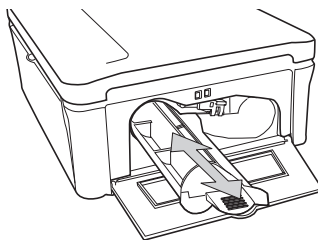
Faint stripes or spots may be printed on the image if internal part of the printer gets dusty. Clear the printer out of dust or dirt in the following steps.

- 1 Press up the Ink cartridge eject lever and remove the Ink cartridge.**  
→ p.24



- 2 Insert the supplied cleaner as indicated, and move the cleaner in and out.**

- Even if images cannot be printed clearly after cleaning internal part of the printer, consult your dealer.



## Specifications

### Main Specifications

#### ◆ Photo printer

Power source:	24 V $\overline{\text{---}}$ , 2.5 A
Power consumption:	approx. 60 W
Operating temperature:	10°C- 35°C
Operating humidity:	20-80 %
Dimensions:	183.5 (W) × 71.0 (H) × 144.5 (D) mm (including protruding parts)
Weight:	approx. 965 g (not including Ink cartridge/Paper tray)
Printing system:	Dye-sublimation thermal transfer (with overcoating)
Maximum number of printing pixels:	300 × 300 dpi
Gradation:	256 gradations/color
Image format:	DPOF compatible, Exif Ver.2.1/2.2, JPEG 4:4:4/2:2/4:2:0
Paper:	Postcard size 100 × 148 mm (100 × 177 mm, before cutting out)
Ink:	Dedicated Ink cartridge (Y/M/C+overcoating)
Print size:	Postcard size: 100 × 148 mm (without borders) 91.4 × 121.3 mm (with borders)
Print speed:	Postcard size: approx. 78 sec.
Print mode:	Full image print (with/without borders), Multiple image print, Index print
Signal transfer method:	PictBridge (with camera)
Connection method:	USB (full speed)

#### ◆ AC adapter (UADPDCAATE02)

Input Voltage:	100-240 V $\sim$ , 1.5 A, 47-63 Hz
Rated Output:	24 V $\overline{\text{---}}$ , 2.5 A
Power consumption:	120-165 VA
Operating temperature:	10°C- 35°C
Operating humidity:	20-80 %
Dimensions:	120 (W) × 38 (H) × 60 (D) mm
Weight:	approx. 350 g

## FUNAI SOFTWARE LICENSE AGREEMENT

PLEASE READ THE TERMS AND CONDITIONS OF THIS LICENSE CAREFULLY BEFORE USING THE SOFTWARE STORED IN THE CD-ROM IN THIS BOX! This document is a legal agreement ("Agreement") between you and FUNAI ELECTRIC CO., LTD. ("FUNAI") and governing your use of the software stored in the CD-ROM and the user manual in this box (including without limitation, sound data and image data, collectively, the "Software"). BY USING THE SOFTWARE, YOU ARE DEEMED TO HAVE AGREED TO THE TERMS OF THIS AGREEMENT. IF YOU DO NOT AGREE TO THE TERMS OF THIS AGREEMENT, DO NOT USE THE SOFTWARE AND RETURN IT TO FUNAI FOR A REFUND

## FUNAI SOFTWARE LICENSE AGREEMENT

### 1. GRANT OF LICENSE:

FUNAI grants you a personal, nonexclusive, limited license to install and use the Software. You may also make copies of the Software as necessary for backup and archival purposes. The term Software shall include the software components, media, all copies made by you and any upgrades, modified versions, updates, additions and copies of the Software licensed to you by FUNAI or its subsidiaries.

### 2. OWNERSHIP:

In all respects the title, ownership and intellectual property rights in and to the Software shall remain FUNAI and/or its subsidiaries. You own only the CD-ROM media in which the Software is stored. Except as expressly provided herein, no license or right, express or implied, is hereby conveyed or granted by FUNAI to you for any intellectual property of FUNAI.

### 3. RESTRICTIONS:

- (1) You may not modify, remove or delete any and all copyright notices (i) which are contained in the Software, including any copy thereof, and (ii) which are on the original CD-ROM and on the medium of a back-up copy made pursuant to Section 1 above, if any.
- (2) You shall not use, copy or transfer the Software except as expressly granted or permitted herein, and shall not assign, sublicense, sell, rent, lease, loan or convey to any third party the Software, and you also shall not have any third party to do so.
- (3) You shall not alter, translate, modify, convert to other programming languages, disassemble, decompile or otherwise attempt to discover the source code of the Software and you also shall not have any third party to do so.

### 4. LIMITED WARRANTY AND DISCLAIMER OF INDEMNITY:

You acknowledge and agree that the use of the Software is at your own risk. THE SOFTWARE IS PROVIDED "AS IS" AND WITHOUT ANY WARRANTY OF ANY KIND. FUNAI, FUNAI'S SUBSIDIARIES AND AFFILIATES, THEIR DISTRIBUTORS AND DEALERS DO NOT AND CANNOT WARRANT THE PERFORMANCE OR RESULTS YOU MAY OBTAIN BY USING THE SOFTWARE. FUNAI, FUNAI'S SUBSIDIARIES AND AFFILIATES, THEIR DISTRIBUTORS AND DEALERS MAKE NO WARRANTIES, EXPRESS OR IMPLIED, AS TO NON INFRINGEMENT, MERCHANTABILITY OR FITNESS FOR ANY PARTICULAR PURPOSE.

FUNAI, FUNAI's subsidiaries and affiliates, their distributors and dealers do not warrant that the functions contained in the Software will meet your requirements or that the operation of the

Software will be uninterrupted or error free. However, FUNAI or FUNAI's subsidiary warrants a medium on which the CD-ROM on which the Software is stored to be free of material or manufacturing defects under normal use and operating conditions for a period of ninety (90) days from the date of you obtained the same as evidenced by a receipt or otherwise. CUSTOMER REMEDIES. FUNAI, FUNAI's subsidiaries and affiliates, their distributors and dealers' entire liability and your exclusive remedy shall be the replacement of the medium not meeting the LIMITED WARRANTY. The LIMITED WARRANTY does not apply if failure of the medium has resulted from accident, abuse or misapplication of the Software and shall not extend to anyone other than the original user of the Software.

#### **5. NO LIABILITY FOR DAMAGES.**

IN NO EVENT SHALL FUNAI, FUNAI'S SUBSIDIARIES AND AFFILIATES, THEIR DISTRIBUTORS AND DEALERS BE LIABLE FOR ANY DAMAGES WHATSOEVER (INCLUDING WITHOUT LIMITATION, LOSS OF BUSINESS PROFITS, LOSS OF DATA, LOSS OF BUSINESS INFORMATION, LOSS OF BUSINESS INTERRUPTION OR OTHER COMPENSATORY, INCIDENTAL OR CONSEQUENTIAL DAMAGES) ARISING OUT OF THE SOFTWARE, USE THEREOF OR INABILITY TO USE THE SOFTWARE EVEN IF FUNAI, FUNAI'S SUBSIDIARIES OR AFFILIATES, THEIR DISTRIBUTORS OR DEALERS HAVE BEEN ADVISED OF THE POSSIBILITY OF SUCH DAMAGES. SOME STATES OR LEGAL JURISDICTIONS DO NOT ALLOW THE LIMITATION OR EXCLUSION OF LIABILITY FOR INCIDENTAL OR CONSEQUENTIAL DAMAGES, OR PERSONAL INJURY OR DEATH RESULTING FROM NEGLIGENCE ON THE PART OF SELLER, SO THE ABOVE LIMITATION OR EXCLUSION MAY NOT APPLY TO YOU.

DISCLAIMER OF INDEMNITY. FUNAI, FUNAI'S SUBSIDIARIES AND AFFILIATES, THEIR DISTRIBUTORS AND DEALERS SHALL ASSUME NO OBLIGATION TO INDEMNIFY YOU AGAINST ANY CLAIM OR SUIT BROUGHT BY A THIRD PARTY ALLEGING THAT THE SOFTWARE OR USE THEREOF INFRINGES ANY INTELLECTUAL PROPERTY OF SUCH THIRD PARTY.

#### **6. EXPORT RESTRICTIONS:**

You agree to comply with all export laws and restrictions and regulations of the country involved, and not to export or re-export, directly or indirectly, the Software in violation of any such laws and restrictions and regulations, or without all necessary approvals.

#### **7. US GOVERNMENT RESTRICTED RIGHTS:**

This Software and the documentation are provided with "RESTRICTED RIGHTS" applicable to private and public licenses alike. Without limiting the foregoing, use, duplication, or disclosure by the U.S. Government is subject to restrictions as set forth in this EULA and as provided in DFARS 227.7202-1(a) and 227.7202-3(a) (1995), DFARS 252.227-7013 (c)(1)(ii)(OCT 1988), FAR 12.212(a)(1995), FAR 52.227-19, or FAR 52.227-14, as applicable.

#### **8. TERM:**

This Agreement is effective upon your acceptance hereof by using the Software and remains in effect until terminated. "Use" shall mean when the Software is loaded on a temporary memory of your PC such as RAM or installed in a fixed memory (hard disc and other memory devices). You may terminate this Agreement with a 30 days prior written notice or by destroying the Software including any and all copies thereof. This Agreement shall also terminate if you fail to comply with any terms of this Agreement. In the event that this Agreement terminates for your failure to comply with this Agreement, in addition to FUNAI enforcing its respective legal rights, you must promptly destroy the Software including any and all copies thereof. Notwithstanding the foregoing, Sections 2, 4, 5, 6, 7, 8, 9 and 10 shall survive any termination of this Agreement.

**9. SEVERABILITY:**

In the event that any of the provisions of this Agreement proves to be invalid or illegal, that will not in no way affect, impair or invalidate any other provision, and all other provisions of this Agreement will be in full force and effect.

**10. GOVERNING LAW:**

The terms and conditions of this Agreement are governed by the laws of Japan. Any litigation arising from the interpretation or execution of this license shall be submitted to Osaka District Court.

## Free Manuals Download Website

<http://myh66.com>

<http://usermanuals.us>

<http://www.somanuals.com>

<http://www.4manuals.cc>

<http://www.manual-lib.com>

<http://www.404manual.com>

<http://www.luxmanual.com>

<http://aubethermostatmanual.com>

Golf course search by state

<http://golfingnear.com>

Email search by domain

<http://emailbydomain.com>

Auto manuals search

<http://auto.somanuals.com>

TV manuals search

<http://tv.somanuals.com>