

# Harsh Environment Case User's Guide

FPCCC27/FPCCC27P

## I N S T R U C T I O N S

These instructions provide details on using the FPCCC27/FPCCC27P Harsh Environment Case (HEC). The FPCCC27 HEC is designed for use with your Stylistic ST4000 Tablet PC (with active digitizer); the FPCCC27P HEC is designed for use with your Stylistic ST4000P Tablet PC (with passive digitizer). The HEC provides maximum protection against water, dust, and other hazards when transporting, using, or storing the Tablet PC.

We strongly recommend that you read these instructions prior to using the HEC with your computer.

*Note the following when using the HEC:*

- To avoid overheating, suspend the Tablet PC when charging the battery pack while the system is in the case and not in use.
- To prevent scratches, a screen protector should be installed on the display window of the HEC. Two screen protectors are provided with the HEC. Additional screen protectors can be obtained from your reseller, or from the Fujitsu Web site at: [us.fujitsu.com/computers](http://us.fujitsu.com/computers).

- If you use the Tablet PC both with and without the HEC, a screen protector can be left in place on the system. If the system will be used only in the HEC, remove the screen protector on the system for better viewing.
- If you use a pen tether, attach it to one of the D-rings on the back of the case.

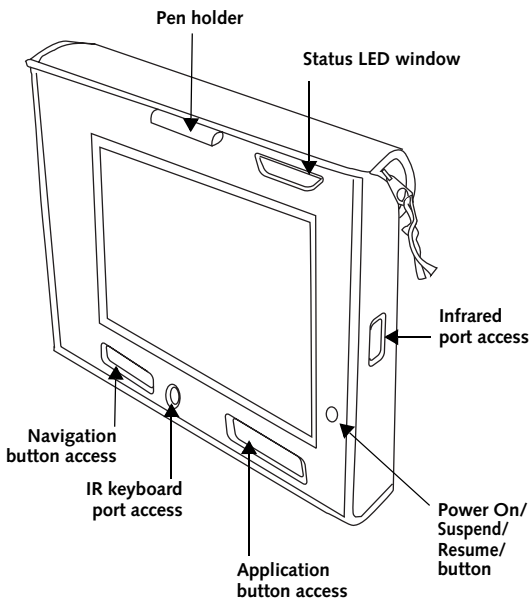


Figure 1. Tablet PC HEC - Front

## Installing the Tablet PC in the HEC

To install your Tablet PC into the HEC, position the case face down as shown in Figure 2. Open the top flap. The top flap is secured by a long strip of Velcro® that is attached to the back of the HEC. Unzip the two side flaps.

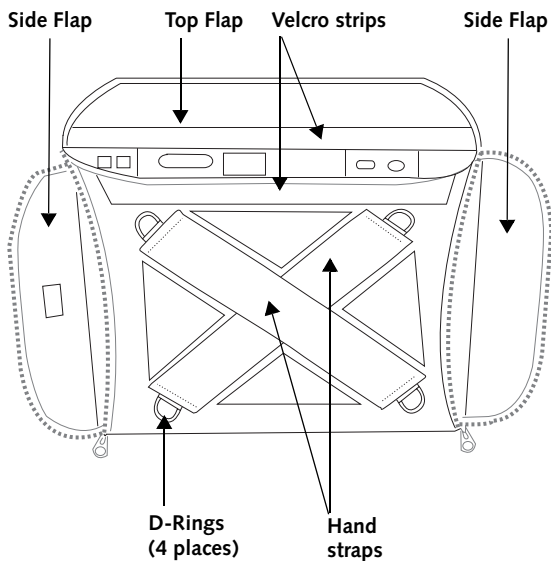
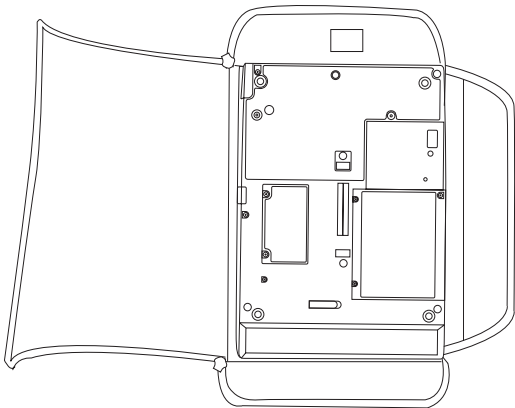


Figure 2. Tablet PC HEC - Rear

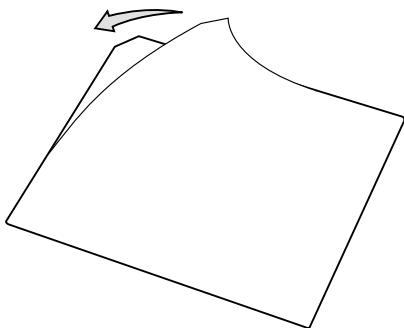
Lay the system face down into the case, with the screen facing the open window. (See Figure 3). Zip up the side flaps and close the top flap



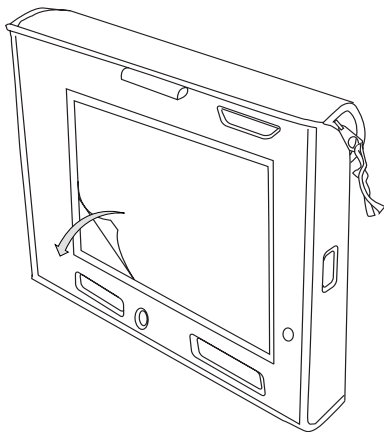
**Figure 3. Inserting Tablet PC into HEC**

## **Installing a Screen Protector**

1. To ensure good adhesion, clean the exterior surface of the HEC window with a soft cotton cloth dampened with isopropyl alcohol before installing the screen protector. If streaking occurs, gently buff the surface with a clean, soft cloth.
2. Peel the protective film from the adhesive side of the screen protector as shown in Figure 4.
3. Apply the screen protector with the adhesive side down and the notch in the lower left corner as shown in Figure 5. Apply pressure along the edges of the screen protector with your finger. Avoid lifting the screen protector from the display window after it is installed. The adhesive requires 48 hours to cure completely.

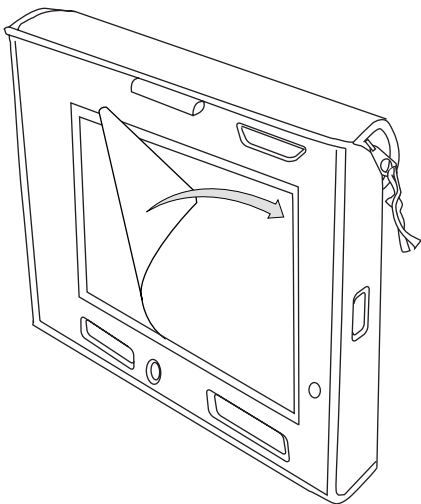


**Figure 4. Removing Adhesive Backing**



**Figure 5. Applying the Screen Protector**

5. Remove the protective film from the top surface of the screen protector as shown in Figure 6.



**Figure 6. Peeling the Protective Film**

Wipe the exposed surface of the screen protector with a clean dry cloth to remove any tacky residue left behind by the protective film. If necessary, clean the surface of the HEC window with a soft cotton cloth dampened with isopropyl alcohol to remove the residue.

## Additional HEC Information

The ends of the elasticized handstraps have D-rings to which you can attach the shoulder strap. To secure the shoulder strap, attach the strap clips to two of the D-rings. The HEC can be carried vertically or horizontally, depending on how you orient the clips.

You can also use one of the D-rings to attach a pen tether.

Once the system is installed in the HEC, the pen can be stored in the pen holder at the top of the HEC, as shown in Figure 7.

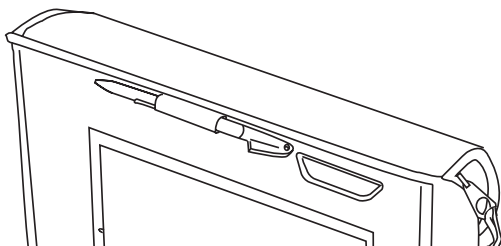


Figure 7. Pen in pen holder

## Caring for the HEC

The HEC is made of rugged materials, and is designed to withstand daily use. Treat the case as you would a briefcase or purse.

Occasionally, the HEC may become dirty. To clean it, use a clean cloth and warm soapy water to wash the soiled area.



**Fujitsu Computer Systems Corporation**

1250 E. Arques Avenue (M/S 122),  
Sunnyvale, California 94085

For more information, call  
**1-877-372-3473** or visit our Web site at:  
**[us.fujitsu.com/computers](http://us.fujitsu.com/computers)**

For technical support call: **1-800-8Fujitsu (1-800-838-5487)**  
or e-mail us at: **[8fujitsu@us.fujitsu.com](mailto:8fujitsu@us.fujitsu.com)**

Fujitsu and the Fujitsu logo are registered trademarks of Fujitsu, Ltd.  
Microsoft and Windows are registered trademarks of the Microsoft Corporation. All other trademarks mentioned herein are the property of their respective owners. We cannot guarantee the accuracy of the contents of this document. We disclaim liability for errors, omissions or future changes.

© 2003 Fujitsu PC Corporation. All rights reserved.

FPC58-0720-02



## Free Manuals Download Website

<http://myh66.com>

<http://usermanuals.us>

<http://www.somanuals.com>

<http://www.4manuals.cc>

<http://www.manual-lib.com>

<http://www.404manual.com>

<http://www.luxmanual.com>

<http://aubethermostatmanual.com>

Golf course search by state

<http://golfingnear.com>

Email search by domain

<http://emailbydomain.com>

Auto manuals search

<http://auto.somanuals.com>

TV manuals search

<http://tv.somanuals.com>