

Installing Your EPSON® FX-880 Printer Driver Using the EPSON USB Adapter Cable

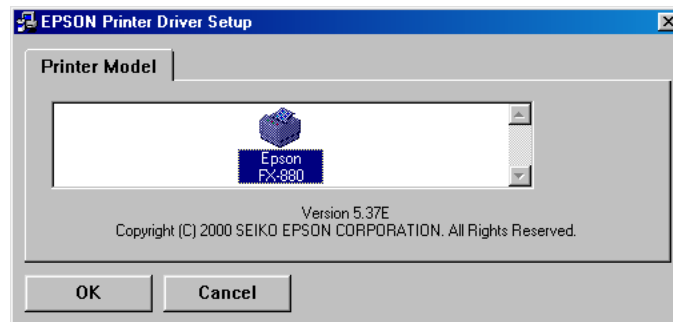
Before You Begin:

- Read through these instructions and, if possible, print a copy so you have it with you as you install the software.
- Close any applications and windows before you begin the installation.
- Make sure your printer is turned off and disconnected from the computer.

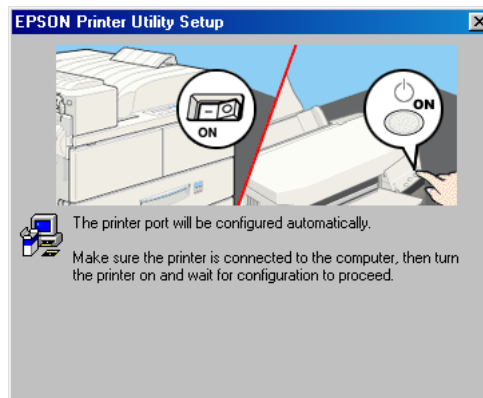
Follow the instructions below for your system.

Installation Instructions for Windows 98

1. Turn off your printer (if it's on) and disconnect it from your computer. (If you see the Add New Hardware Wizard, click Cancel.)
2. Download the FX-880 printer driver that includes USB adapter cable support from <http://support.epson.com>. The driver downloads as a single self-extracting file onto your hard drive (fx880usb.exe).
3. Double-click the self-extracting file to expand the driver files onto your hard drive.
4. After the files finish expanding, you should see the following screen (if you don't see this screen, double-click setup.exe in the main folder where the files installed):

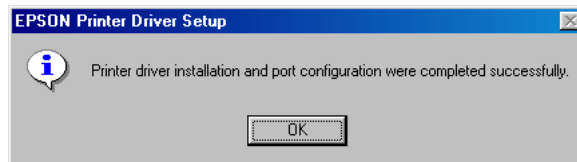


5. Click OK. The printer driver begins installing to your system.
6. You see the EPSON Printer Utility Setup screen:



7. Connect your printer to the computer using the EPSON USB adapter cable.

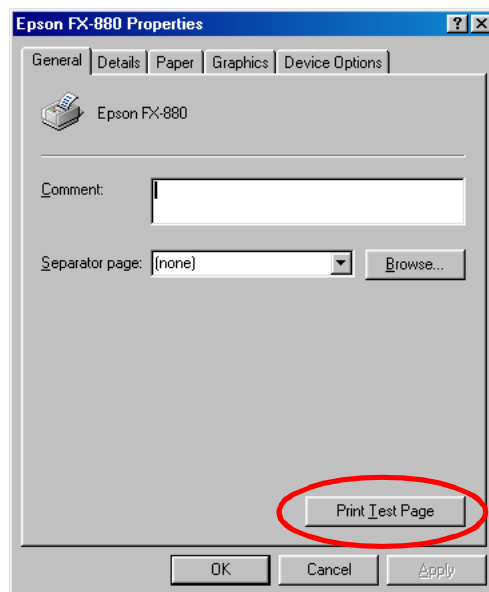
8. Turn the printer on.
9. Your system completes the installation.



Printing a Test Page

If you want, you can print a test page to verify that your printer is working correctly:

1. Click **Start**, point to **Settings**, then **Printers**.
2. Right-click the EPSON FX-880 printer icon, then select **Properties**. You see this screen:



3. Click **Print Test Page**. (If you see a screen prompting you to insert paper, make sure paper is loaded and then click **OK**.)

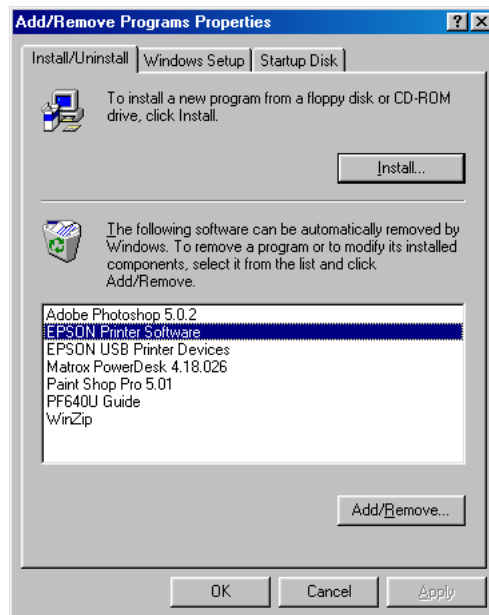
If the test page doesn't print correctly, uninstall your printer driver and USB device driver software as described in the next section. Then reinstall it as described above. If you still have any problems, contact your EPSON dealer or EPSON technical support as described in the Where to Get Help section of your printer documentation.

Uninstalling Your Printer Driver

If you need to uninstall your printer driver and USB device driver software, follow these steps:

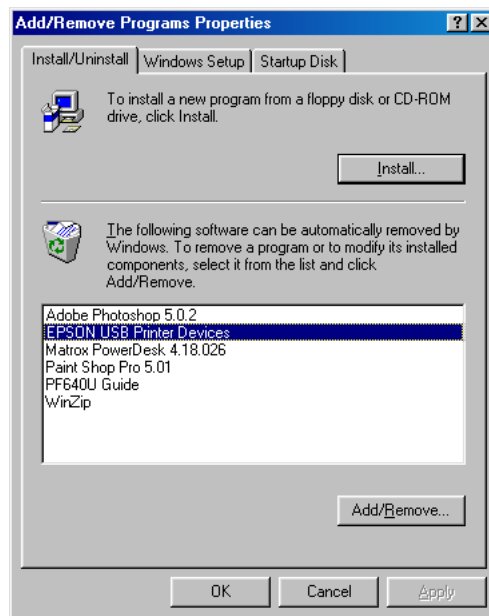
1. Turn off your printer and disconnect it from your computer.
2. Click **Start**, point to **Settings**, then **Control Panel**.

3. Double-click Add/Remove Programs. You see this screen:



4. Select EPSON Printer Software in the list, then click Add/Remove. Follow the on-screen prompts to finish removing your Epson FX-880 software.

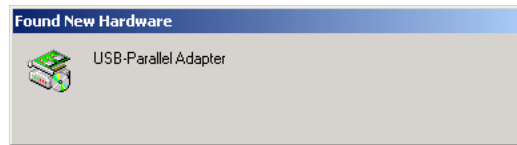
When done, the Add/Remove Programs dialog box returns:



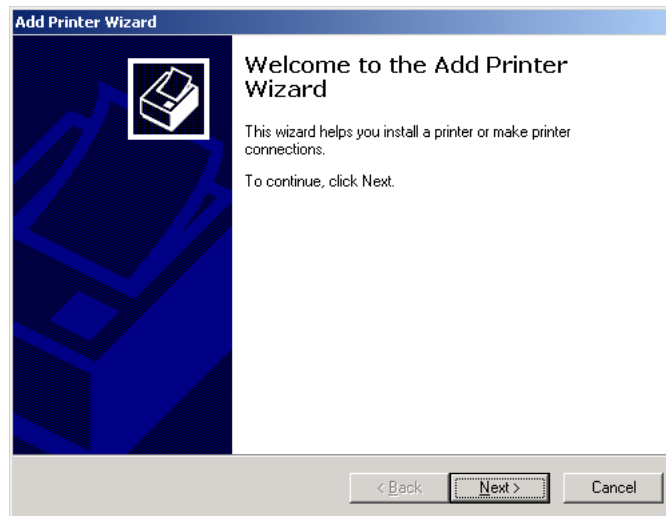
5. Select EPSON USB Printer Devices, then click Add/Remove. Follow the on-screen prompts to finish removing the software.
6. When done, reboot your computer.

Installation Instructions for Windows 2000

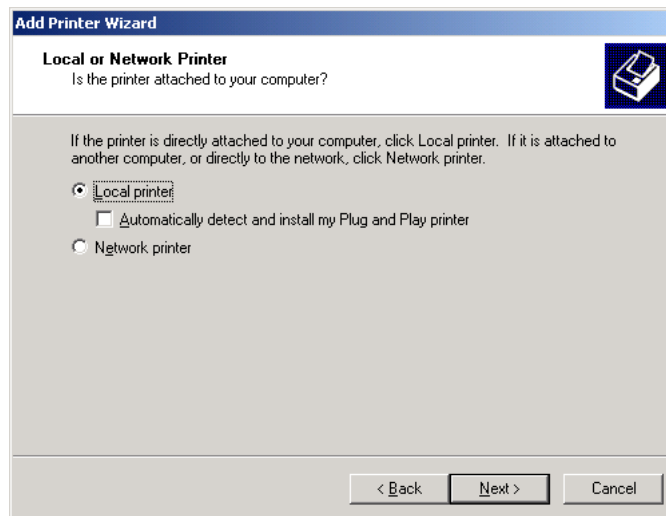
1. Make sure your printer is turned off. Then disconnect it from your computer.
2. Turn on your computer and make sure Windows 2000 is running.
3. Connect your printer to the computer using the EPSON USB adapter cable. You may see the Found New Hardware screen, which appears briefly as the computer configures the USB port:



4. Click **Start**, point to **Settings**, then **Printers**.
5. Double-click the **Add Printer** icon. You see the **Add Printer Wizard**:

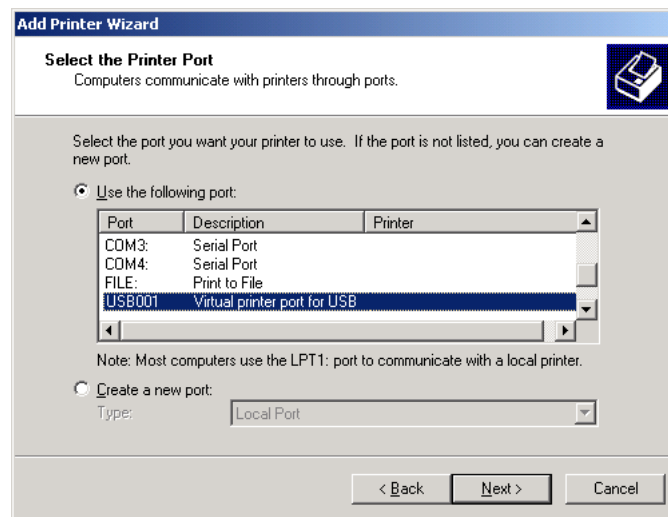


6. Click **Next**. You see this screen:



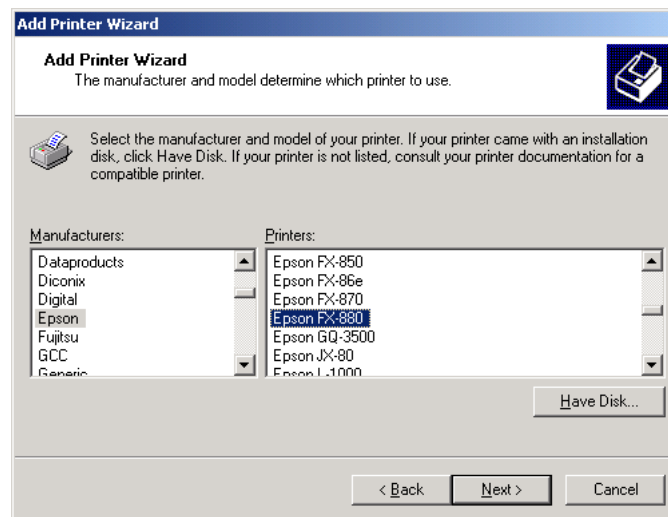
7. Select **Local printer** as shown, and make sure the **Plug and Play** option is turned off. Then click **Next**.

You see this screen:



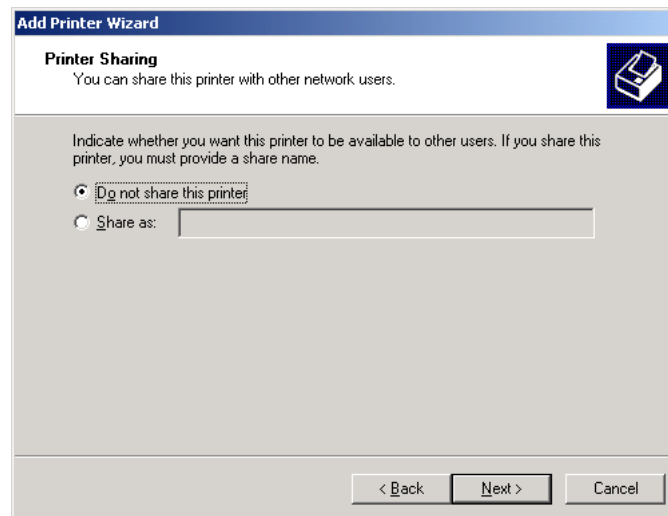
8. Select **Virtual printer port for USB**, as shown above. (If more than one such listing is shown, select the one without a printer name beside it.)

Click **Next**. You see this screen:



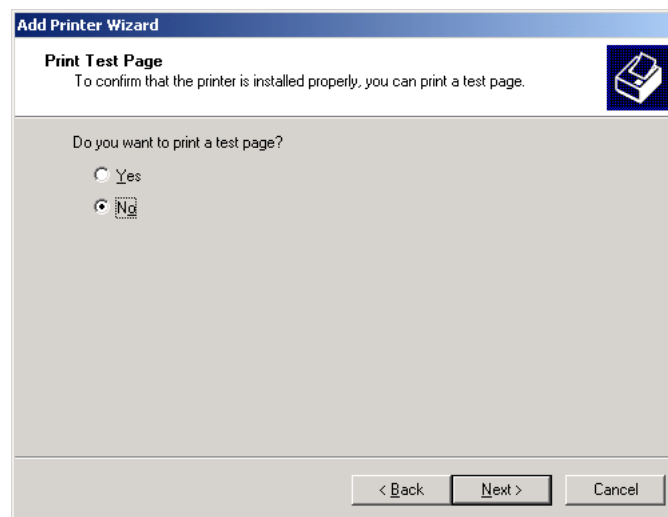
9. In the **Manufacturers** list, select **Epson**. Then, in the **Printers** list, select **Epson FX-880**. Then click **Next**.
10. You see a screen that says "Name Your Printer" near the top. Click **Next**.

You see this screen:



11. Make sure Do not share this printer is selected, then click Next.

You see this screen:



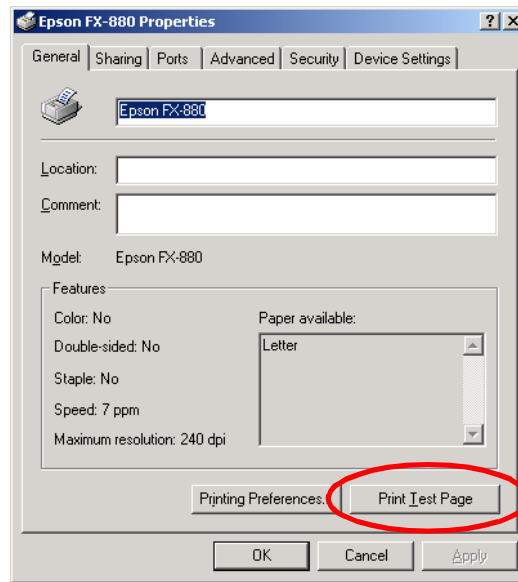
12. Select **NO** for printing a test page. (Important: You must select **NO**, or the installation won't be completed properly. See below when done for printing a test page.)
13. Click **Next**, then click **Finish**. Your system completes the installation.

Printing a Test Page

If you want, you can print a test page to verify that your printer is working correctly:

1. Turn on your printer and make sure paper is loaded.
2. Click **Start**, point to **Settings**, then **Printers**.

3. Right-click the Epson FX-880 printer icon, then select **Properties**. You see this screen:



4. Click **Print Test Page**.

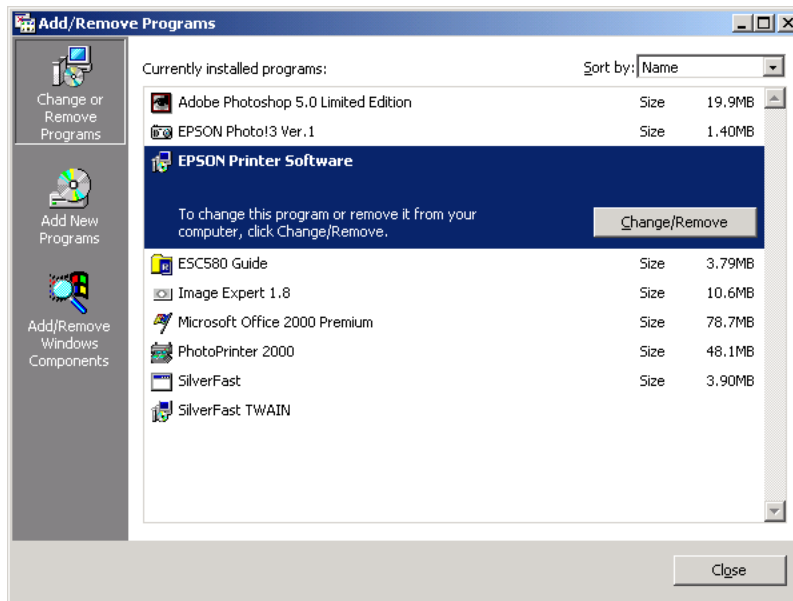
If the test page doesn't print correctly, uninstall your printer driver and USB device driver software as described in the next section. Then reinstall it as described above. If you still have any problems, contact your EPSON dealer or EPSON technical support as described in the Where to Get Help section of your printer documentation.

Uninstalling Your Printer Driver

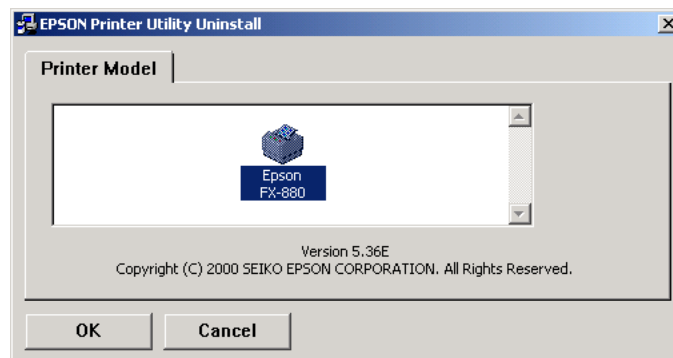
If you need to uninstall your printer driver and USB device driver software, follow these steps:

1. Leave your printer connected to the computer during the uninstall.
2. Click **Start**, point to **Settings**, then **Control Panel**.
3. Double-click **Add/Remove Programs**.

You see this screen:



4. Select EPSON Printer Software. Then click Change/Remove. You see this screen:



5. If more than one printer is shown, make sure the Epson FX-880 icon is selected. Then click OK and follow the on-screen instructions to finish removing the printer driver software.

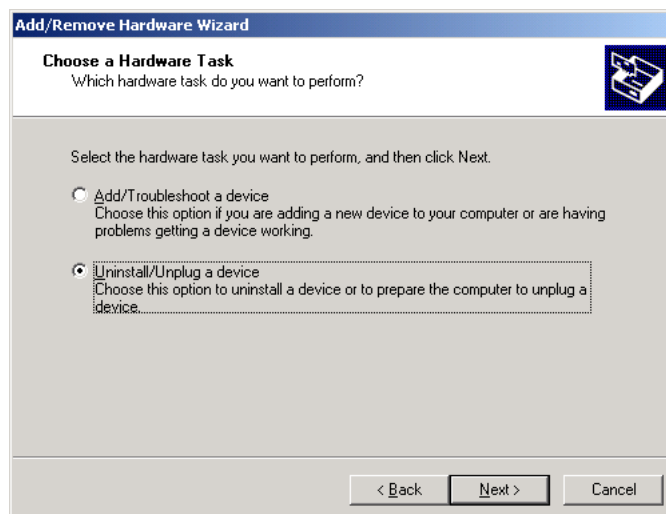
When done, close the Add/Remove Programs dialog box. Then continue with the following steps to remove the USB device driver software.

6. In the Windows Control Panel, double-click Add/Remove Hardware.

You see this screen:

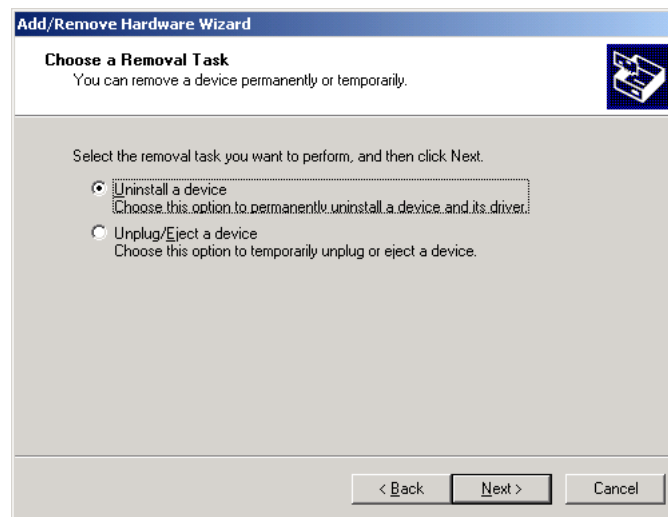


Click Next. You see this screen:

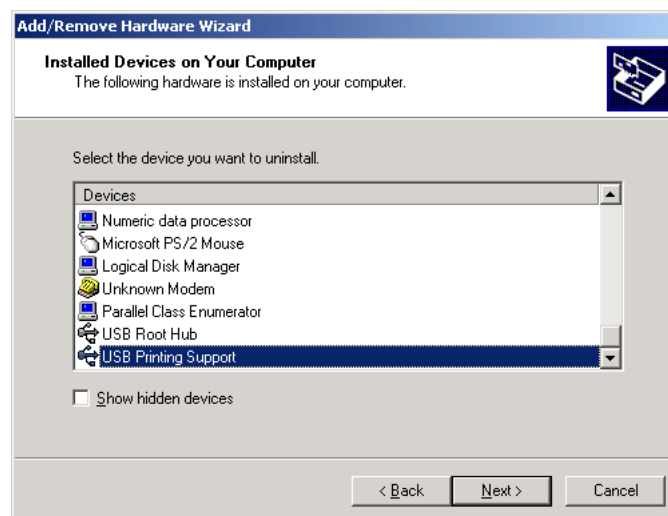


7. Select Uninstall/Unplug a device, then click Next.

You see this screen:



8. Select **Uninstall a device**, then click **Next**. You see this screen:



9. Select **USB Printing Support**. (You may have to scroll down in the list to see it.) Then click **Next** and follow the on-screen instruction to finish uninstalling the software.
10. When done, unplug the USB adapter cable from your computer.

FX is a trademark of Epson America, Inc., and EPSON is a registered trademark of SEIKO EPSON CORPORATION.

General Notice: Other product names used herein are for identification purposes only and may be trademarks of their respective owners. EPSON disclaims any and all rights in those marks.

Copyright © 2000 by Epson America, Inc.

Free Manuals Download Website

<http://myh66.com>

<http://usermanuals.us>

<http://www.somanuals.com>

<http://www.4manuals.cc>

<http://www.manual-lib.com>

<http://www.404manual.com>

<http://www.luxmanual.com>

<http://aubethermostatmanual.com>

Golf course search by state

<http://golfingnear.com>

Email search by domain

<http://emailbydomain.com>

Auto manuals search

<http://auto.somanuals.com>

TV manuals search

<http://tv.somanuals.com>