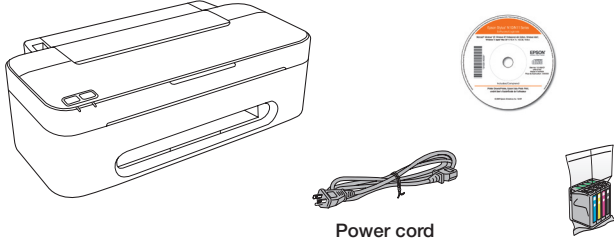


Epson Stylus® N10/N11 Series Start Here

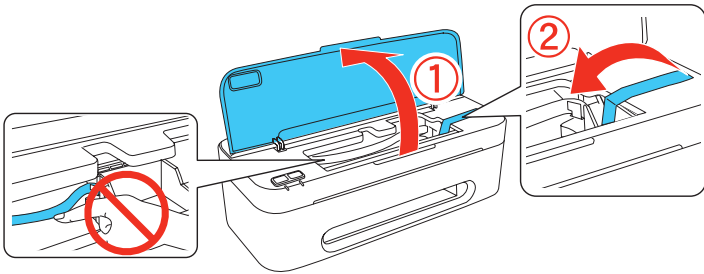
Read these instructions before using your printer.

1 Unpack



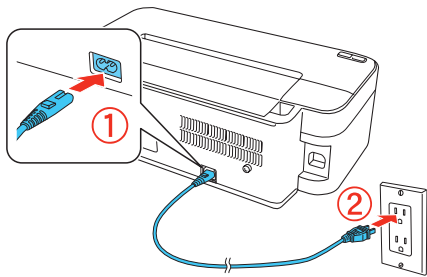
Caution: Do not open the ink cartridge package until you are ready to install the ink. Cartridges are vacuum packed to maintain reliability.

Remove all protective materials.



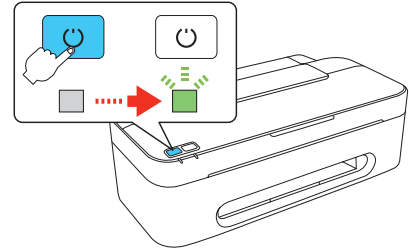
2 Turn on

1 Connect the power cable.



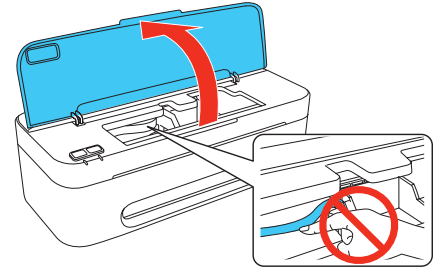
Caution: Do not connect to your computer yet.

2 Press the power button.



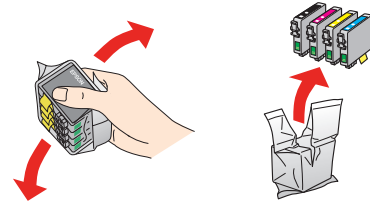
3 Install ink cartridges

1 Open the printer cover.

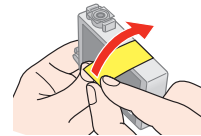


Caution: Do not touch the white cable inside the printer.

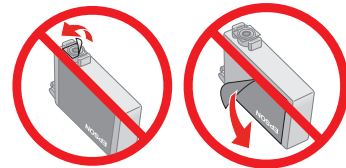
2 Shake the ink cartridges, then unpack them.



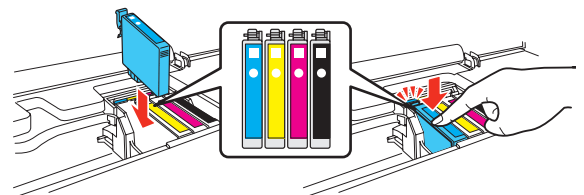
3 Remove only the yellow tape from each cartridge.



Caution: Don't remove any other seals from the cartridges.



4 Insert the cartridges in the holder for each color, and press each cartridge down until it clicks.

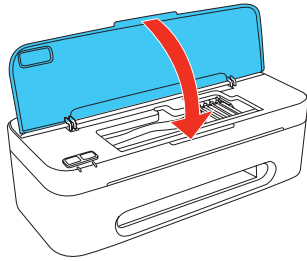



411842900

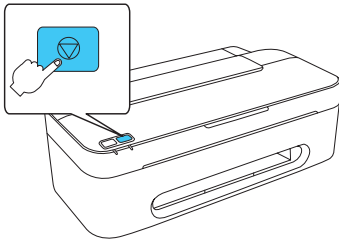
EPSON®
EXCEED YOUR VISION

Download from www.Somanuals.com. All Manuals Search And Download.

5 Close the printer cover.



6 Press the  stop button to charge the ink. Charging takes about 2 minutes.

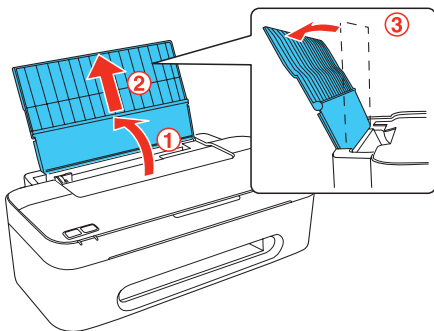


Note: Your printer ships with full cartridges and part of the ink from the first cartridges is used for priming the printer.

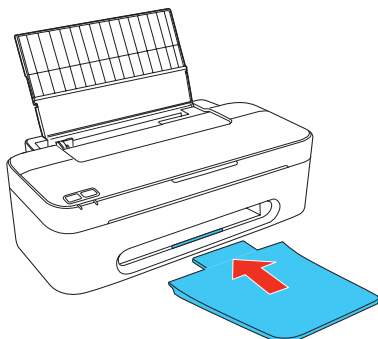
Caution: Don't turn off the printer while it is charging or you'll waste ink.

4 Load paper

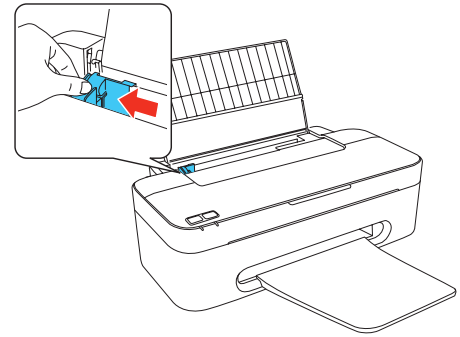
1 Open the paper support, then pull up the extension and tilt it back slightly.



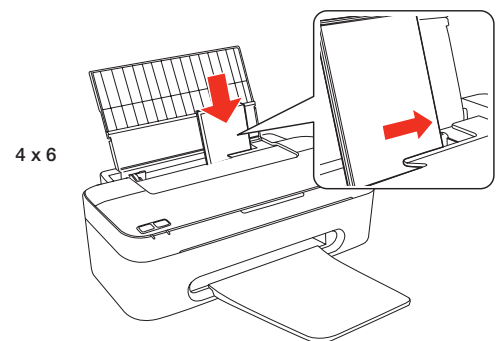
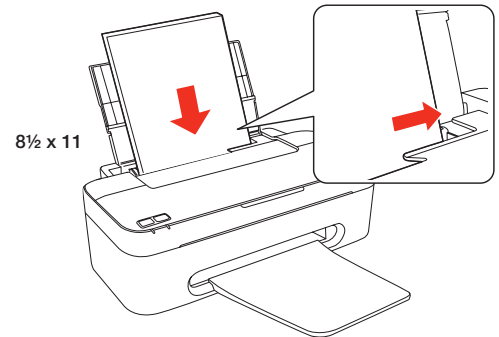
2 Insert the output tray.



3 Squeeze the edge guide and slide it to the left.



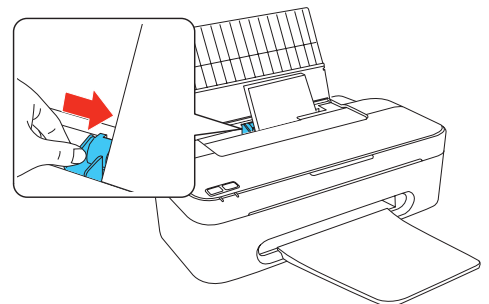
4 Load paper against the right edge guide and behind the tab, with the printable side face up.



Note: Don't load the paper sideways; always load it short edge first.

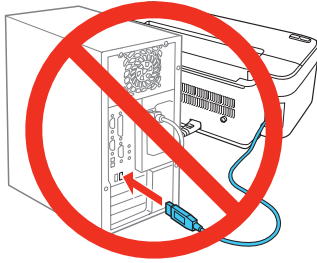


5 Slide the edge guide over, against the left edge of the paper.

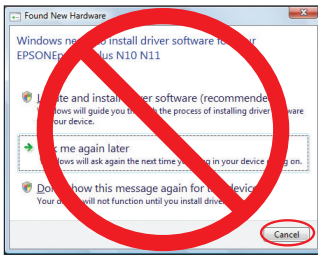


5 Install software

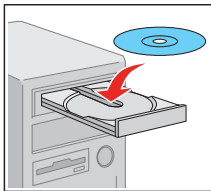
- 1 Make sure the printer is **NOT CONNECTED** to your computer.



Windows®: If you see a Found New Hardware screen, click **Cancel** and disconnect the USB cable. You can't install your software that way.



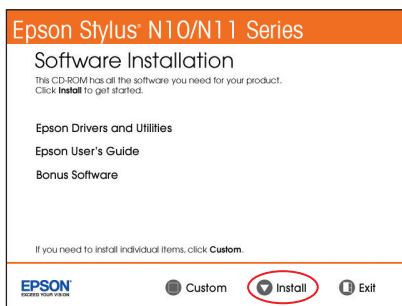
- 2 Insert the Epson Stylus N10/N11 Series software CD.



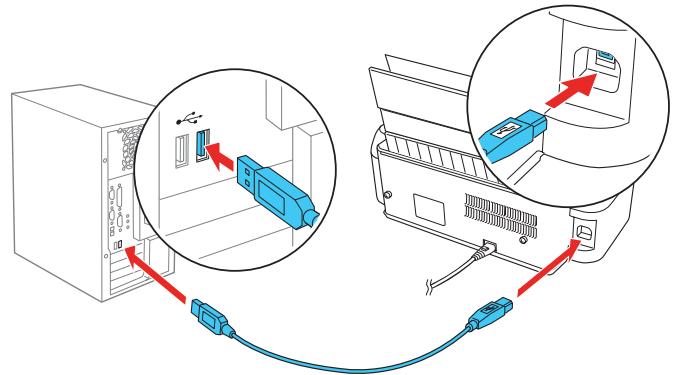
Windows: If you see the AutoPlay window, click **Run SETUP.EXE**. If you see a User Account Control screen, click **Continue** or **Yes**.

- 3 **Macintosh®:** Double-click the  **Epson** icon.

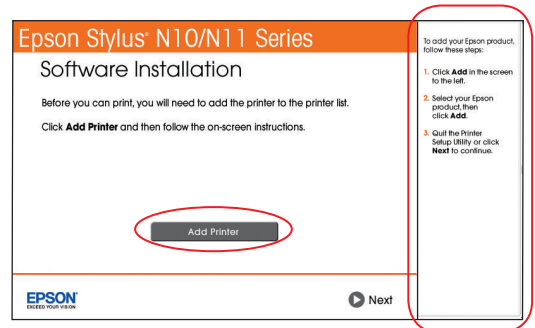
- 4 Click **Install** and follow the on-screen instructions.



- 5 When prompted, connect the USB cable. Use any open USB port on your computer. Make sure the printer is turned on.



- 6 **Mac OS® X 10.4 only:** When you see this screen, click **Add Printer**. Follow the steps on the right side of the screen to add your printer. Click **Next** to continue, if necessary.



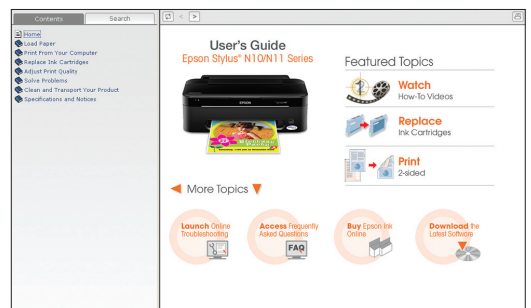
- 7 Follow the on-screen instructions to install the rest of the software and register your printer.

- 8 When you're done, remove the CD.

Any questions?

User's Guide

Click the desktop shortcut to access the online User's Guide, how-to videos, software downloads, Epson Supplies CentralSM, and more (requires an Internet connection).



Epson Technical Support

Visit epson.com/support to download drivers, view manuals, get FAQs, or e-mail Epson.

You may also speak with a support specialist by calling (562) 276-7525 (US), 6 AM to 8 PM, Pacific Time, Monday through Friday and 7 AM to 4 PM, Saturday, or (905) 709-2567 (Canada), 6 AM to 6 PM, Pacific Time, Monday through Friday.

Need paper and ink?



Use Epson premium papers with DURABrite® Ultra Ink for professional results. You can purchase them from Epson Supplies Central at www.epson.com/ink3 (U.S. sales) or www.epson.ca (Canadian sales). You can also purchase supplies from an Epson authorized reseller. To find the nearest one, call 800-GO-EPSON (800-463-7766).

Genuine Epson Paper

Epson offers a wide variety of papers to meet your needs; visit Epson Supplies Central for more information.



Try Premium Presentation Paper Matte, an ultra smooth, non-glare, heavy-weight paper for long-lasting photos and professional looking brochures.

Genuine Epson Ink



Look for the numbers below to find your cartridges. It's that easy!

Color	Standard capacity	Moderate use
● Black	69	88
● Cyan	69	88
● Magenta	69	88
● Yellow	69	88

Epson and Epson Stylus are registered trademarks, Epson Exceed Your Vision is a registered logomark, and Supplies Central is a service mark of Seiko Epson Corporation. DuraBrite is a registered trademark of Epson America, Inc.

General Notice: Other product names used herein are for identification purposes only and may be trademarks of their respective owners. Epson disclaims any and all rights in those marks.

This information is subject to change without notice.

© 2009 Epson America, Inc. 12/09

CPD-27766

Printed in XXXXXX

Free Manuals Download Website

<http://myh66.com>

<http://usermanuals.us>

<http://www.somanuals.com>

<http://www.4manuals.cc>

<http://www.manual-lib.com>

<http://www.404manual.com>

<http://www.luxmanual.com>

<http://aubethermostatmanual.com>

Golf course search by state

<http://golfingnear.com>

Email search by domain

<http://emailbydomain.com>

Auto manuals search

<http://auto.somanuals.com>

TV manuals search

<http://tv.somanuals.com>