

# Quick Setup

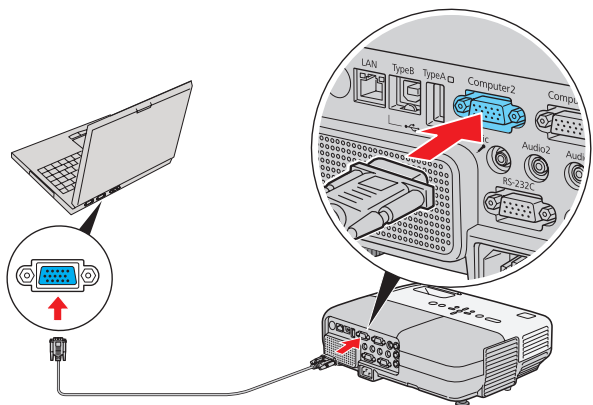
Before using the projector, make sure you read the safety instructions in the *User's Guide* on your projector CD.

## Connect the projector

Choose from the following connections:

### Computer Monitor Port

Connect a computer using the VGA cable that came with the projector.

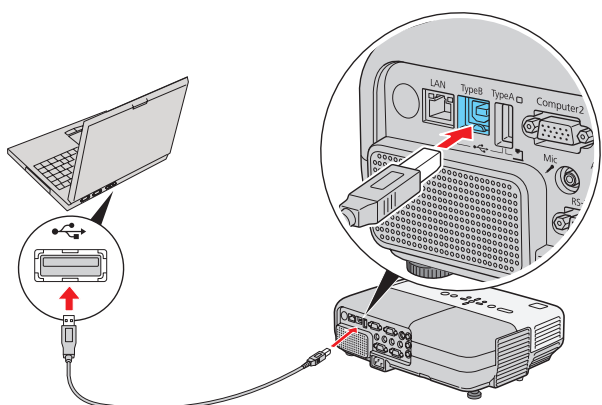


Connect one end to the projector's **Computer1** or **Computer2** port, and the other end to your computer's monitor port. If you are using a notebook, switch it to external display. You can also connect an audio cable to the **Audio1** or **Audio2** port.

### Computer USB Port

Connect a computer (Windows® 2000 SP4 or later or Mac OS® X 10.5.1-10.6) using the USB cable that came with the projector.

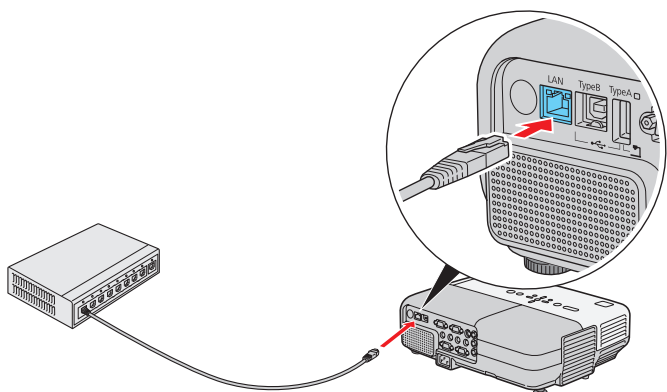
Connect the square end of the USB cable to the projector's **TypeB** (square) USB port. Connect the flat end of the cable to any USB port on your computer. Then turn on your projector (see "Turn on your equipment"). You can also connect an audio cable to the **Audio2** port.



Follow the on-screen instructions to install the Epson USB Display software (with Mac OS X, first double-click the **USB Display Installer** icon that appears on your computer screen). Then press the **USB** button on the remote control. (You need to install the software only the first time you connect.)

### Network (LAN)

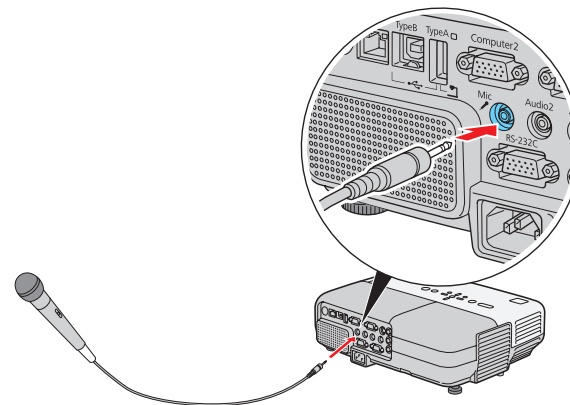
Connect the projector to your network using an Ethernet® cable. See "Project Over the Network" on the back of this sheet for more information.



### Microphone

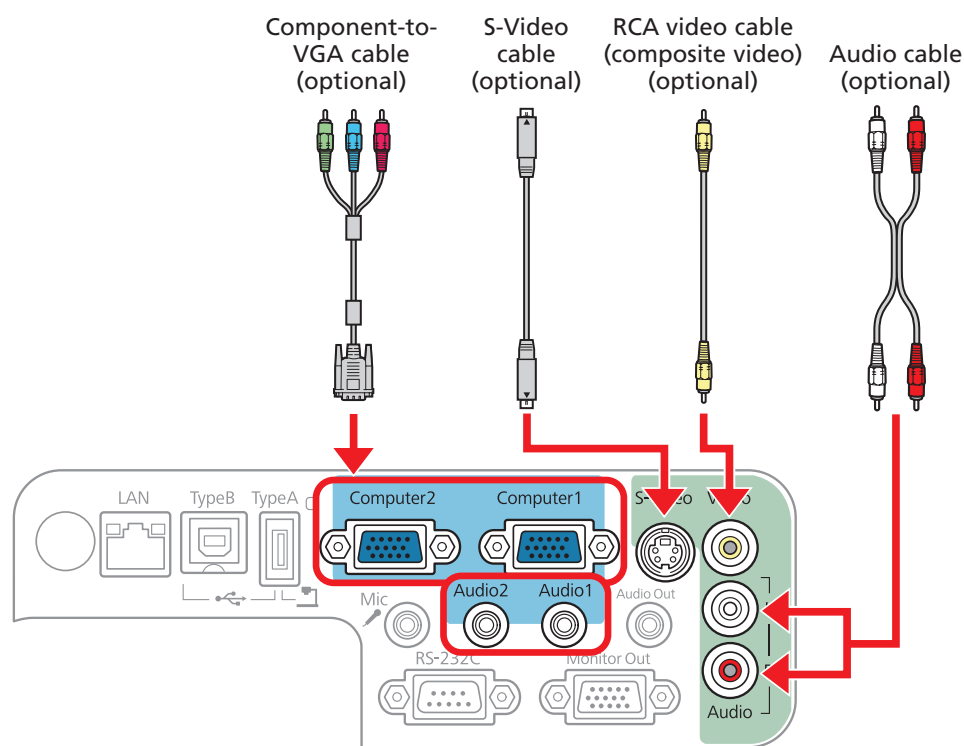
Connect a dynamic or condenser microphone to the **Mic** port, using a 3.5 mm mini-jack cable.

**NOTE:** If you're using a condenser microphone, set the **Plug-in Power** setting to **On**. See the *User's Guide* on your projector CD for more information.



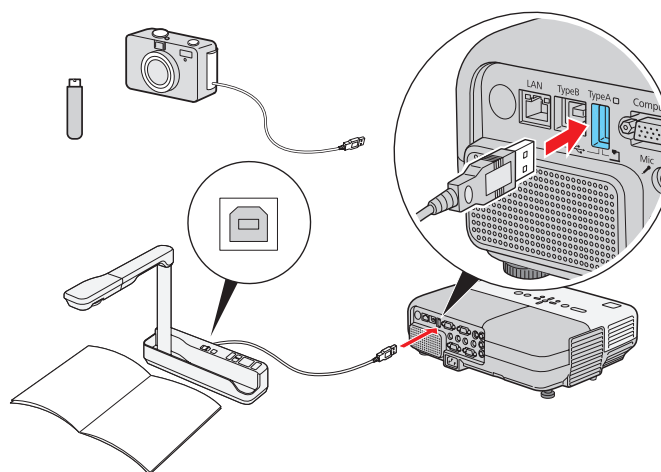
### Video Player

Connect up to 4 video devices and use the remote control to switch between them.



### Camera or USB Device

Connect a digital camera, document camera (Epson DC-06 document camera), or other USB device to the projector's **TypeA** (flat) USB port.



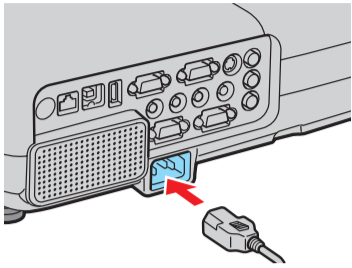
If you connect a digital camera or USB storage device, you can use the projector's Slideshow feature to present JPEG images. See the *User's Guide* on your projector CD.

For information on playing sound through the projector or connecting an external monitor, see the *User's Guide* on your projector CD.

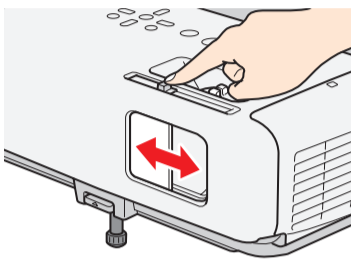


# Turn on your equipment

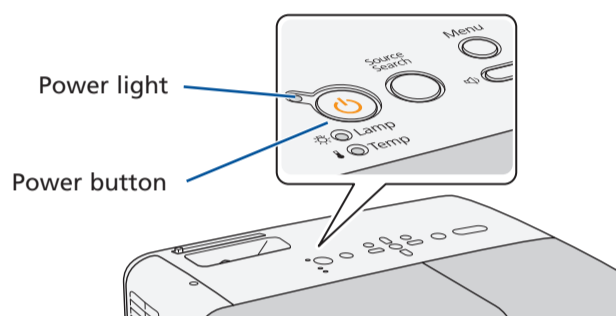
- 1 Turn on your computer or video source.
- 2 Plug in the projector.



- 3 Open the **A/V Mute** slide all the way.



- 4 Press the power button on the projector or remote control.



The power light flashes green, then stays on.

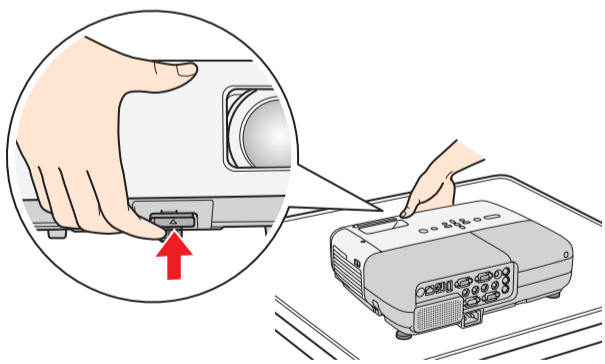
**NOTE:** To shut down the projector, press the power button twice, wait for the two confirmation beeps, then unplug it. You don't have to wait for the projector to cool down.

# Adjust the image

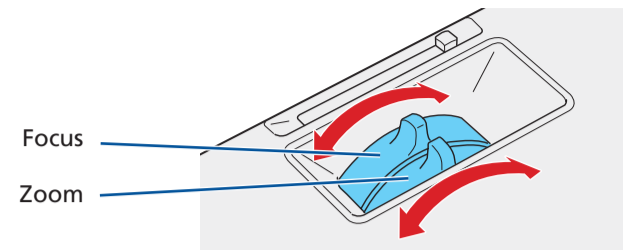
- 1 If you don't see an image, press the **Source Search** button on the projector or remote control to select the image source.

**NOTE:** If you still see a blank screen or have other display problems, see the troubleshooting tips on the back of this sheet.

- 2 To raise the image, press the foot release button and lift the front of the projector. Release the button to lock the foot in position.



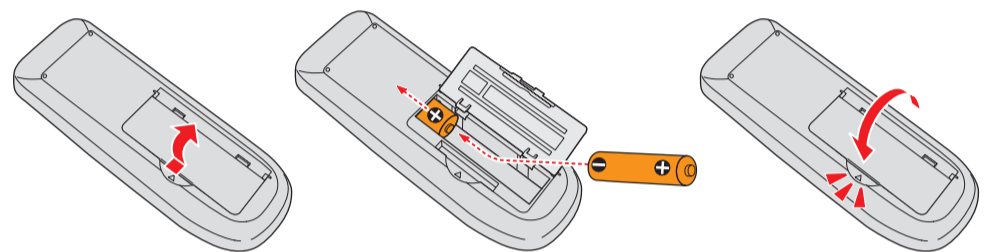
- 3 Turn the focus ring to sharpen the image.  
Turn the zoom ring to reduce or enlarge the image.



- 4 If your image looks like or , you've placed the projector off to one side of the screen at an angle. Place it directly in front of the center of the screen, facing the screen squarely.
- 5 If your image looks like or , press the or buttons on the projector to correct it.

# Using the remote control

Make sure the batteries are installed as shown (two AA batteries).



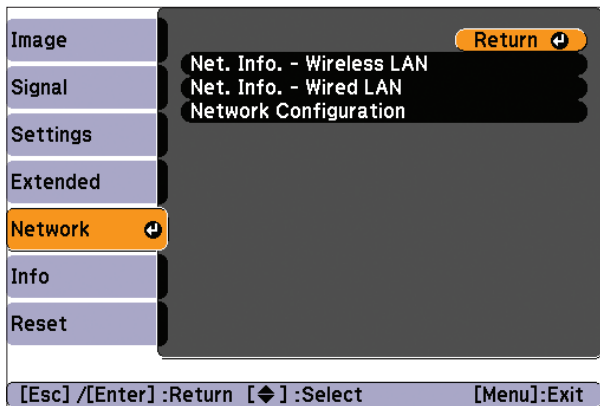
You can use the remote control to operate the projector. With the USB cable, you can use the remote as a wireless mouse. For more information on using the remote control, see the *User's Guide* on your projector CD.

# Network configuration

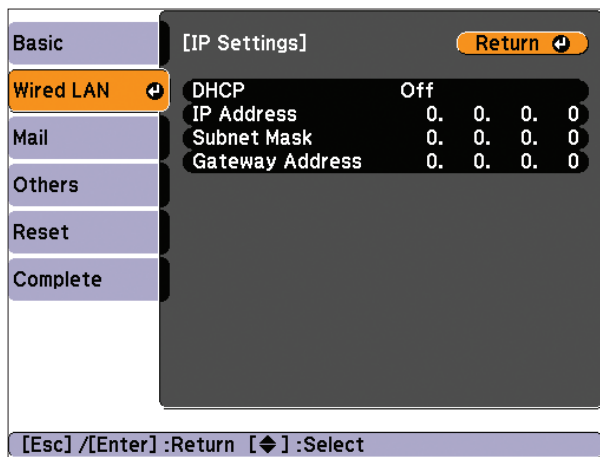
If you need to configure the projector for your network, you can use the projector's menu system.

**NOTE:** If you're using the optional Wireless 802.11a/b/g Module, see the User's Guide on your projector CD for configuration instructions.

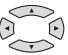
- 1 Press the **Menu** button on the remote control, select the **Network** menu, then press **Enter**.



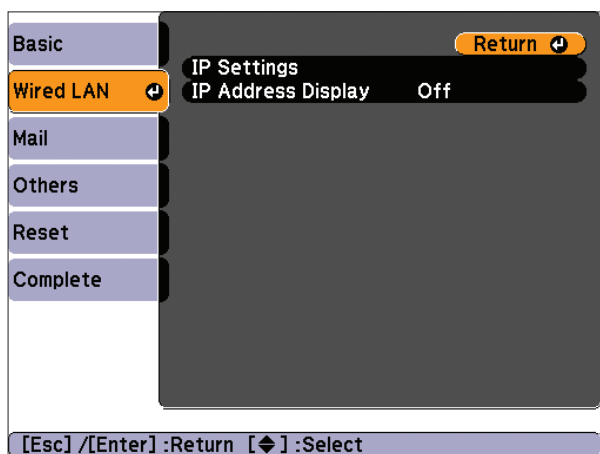
- 2 Choose **Network Configuration** and press **Enter**.
- 3 Select the **Wired LAN** menu and press **Enter**.
- 4 Choose **IP Settings** and press **Enter**. You see a screen like the following:



- 5 Do one of the following:
  - If your network assigns addresses automatically, turn on the **DHCP** setting.
  - If your network does not assign addresses automatically, turn off **DHCP** and enter the projector's **IP Address**, **Subnet Mask**, and **Gateway Address**, as needed.

To enter numbers, use the  buttons on the remote control to highlight the number you want to input, then press the **Enter** button. When you're finished entering an address in the network menu, press the **Esc** button to return to the previous menu.

- 6 To prevent the IP address from appearing on the standby screen, set the **IP Address Display** setting to **Off**.

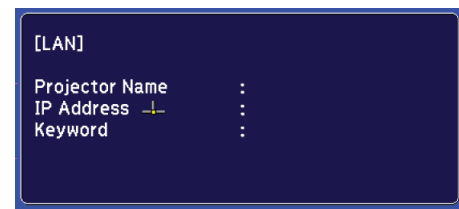


- 7 When you're done making all necessary changes, press the **Esc** button to return to the previous menu, select **Complete**, and press the **Enter** button to save your settings. Then press **Enter** again to confirm.
- 8 Press the **Menu** button to exit the menu system.

# Project over the network

Install EasyMP® Network Projection and EasyMP Monitor (Windows only) on each computer that will project over the network. Use the CD labeled **Epson Projector Software for Meeting & Monitoring** to install the software. If you need to configure the projector for your network, see "Network Configuration."

- 1 Press the **LAN** button on the remote control.

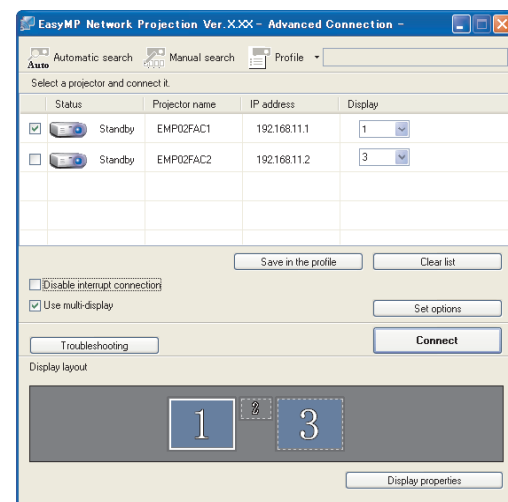


- 2 Start EasyMP Network Projection on your computer.

Windows: Select  or **Start > Programs** or **All Programs > EPSON Projector > EasyMP Network Projection > EasyMP Network Projection V2.XX**.

Mac OS X: Double-click the **EasyMP Network Projection** icon in your Applications folder.

- 3 Select **Advanced Connection Mode** and click **OK**.

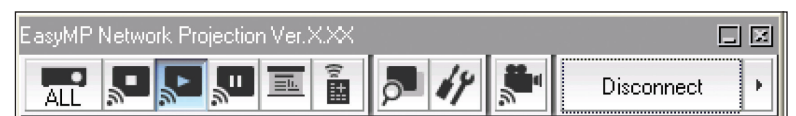


- 4 Select the projector you want to connect to, then click **Connect**.

If you don't see the projector you want, click the **Automatic search** button. If you still don't see the projector, click the **Manual Search** button and enter the projector's IP address.

- 5 If you see a message asking for a keyword, enter the four digits that appear on the LAN standby screen and click **OK**.

Your computer image is projected, with a floating toolbar:




When you're done presenting, click **Disconnect** on the toolbar.

**NOTE:** Using the optional Wireless 802.11a/b/g Module, you can project wirelessly. To purchase the Wireless 802.11a/b/g Module or other accessories, see "Optional Accessories." For more information about using the projector on a network, see your User's Guide and EasyMP Network Projection Operation Guide on your projector CD.

# Troubleshooting


## If you see a blank screen...

If you see a blank screen or the **No signal** message after turning on your computer, check the following:

- Make sure the power light on the projector is green and not flashing, and the **A/V Mute** slide is open.
- Press the **Source Search** button on the projector or remote control to select the computer as the image source.
- If you're using a Windows notebook, press the function key on your keyboard that lets you display on an external monitor (allow a few seconds for the projector to sync up after you press the key). It may be labelled **CRT/LCD** or have an icon such as . You may have to hold down the **Fn** key while pressing it.

## If the projector and notebook don't display the same image...

### Windows

Try using the CRT/LCD or  key as described above. On most systems, this key lets you toggle between the LCD screen and the projector, or display on both at the same time.

If that doesn't work, check your monitor settings to make sure both the LCD screen and the external monitor port are enabled.

- 1** From the Windows Control Panel, open the **Display** utility and select **Settings** or **Change display settings**. In Windows Vista®, right-click on the desktop and select **Personalize**, then select **Display Settings**.
- 2** Select **Advanced** or **Advanced Settings**.
- 3** The method for adjusting the setting varies; you may have to click a **Monitor** tab, then make sure the external monitor port is set as your primary display and/or enabled.

### Mac OS X

- 1** From the Apple® menu, select **System Preferences**, then select **Display** or **Displays**.
- 2** Click **Detect Displays**.
- 3** Make sure the **VGA Display** or **Color LCD** dialog box is selected.
- 4** Click **Arrangement** or **Arrange**, then make sure **Mirror Displays** is selected.

# Where to get help

## Manuals

For more information about using the projector, install the manuals from your projector CD.

## Telephone Support Services

To use the Epson PrivateLine® Support service, call (800) 637-7661 and enter the PIN on the Epson PrivateLine Support card included with your projector. This service is available 6 AM to 6 PM, Pacific Time, Monday through Friday, for the duration of your warranty period. You may also speak with a projector support specialist by dialing:

(562) 276-4394 (U.S.) or (905) 709-3839 (Canada), 6 AM to 6 PM, Pacific Time, Monday through Friday

Days and hours of support are subject to change without notice. Toll or long distance charges may apply.

## Internet Support

Visit [epson.com/support](http://epson.com/support) for solutions to common problems. You can download utilities and documentation, get FAQs and troubleshooting advice, or e-mail Epson with your questions.

## Registration

Register today to get product updates, special promotions, and customer-only offers. You can use the CD included with your projector or register online at [www.epson.com/webreg](http://www.epson.com/webreg).

# Optional accessories

For a list of optional accessories, see the *User's Guide* on your projector CD.

You can purchase screens, carrying cases, or other accessories from an Epson authorized reseller. To find the nearest reseller, call 800-GO-EPSON (800-463-7766). Or you can purchase online at [www.epsonstore.com](http://www.epsonstore.com) (U.S. sales) or [www.epson.ca](http://www.epson.ca) (Canadian sales).

**EPSON®**  
EXCEED YOUR VISION



Epson is a registered trademark and Epson Exceed Your Vision is a registered logomark of Seiko Epson Corporation. PowerLite and PrivateLine are registered trademarks of Epson America, Inc.

General Notice: Other product names used herein are for identification purposes only and may be trademarks of their respective owners. Epson disclaims any and all rights in those marks.

This information is subject to change without notice.

© 2009 Epson America, Inc. 12/09  
Printed in XXXXXX

CPD-2777

## Free Manuals Download Website

<http://myh66.com>

<http://usermanuals.us>

<http://www.somanuals.com>

<http://www.4manuals.cc>

<http://www.manual-lib.com>

<http://www.404manual.com>

<http://www.luxmanual.com>

<http://aubethermostatmanual.com>

Golf course search by state

<http://golfingnear.com>

Email search by domain

<http://emailbydomain.com>

Auto manuals search

<http://auto.somanuals.com>

TV manuals search

<http://tv.somanuals.com>