



GE MULTILIN™

PMCS 6.15

Read-This-Book-First

**Installation Guide
DEH-211**

GE Power Management Control System

Notice

The information contained in this document is subject to change without notice. GE makes no warranty of any kind with regard to this material, including, but not limited to, the implied warranties of merchantability and fitness for a particular purpose. GE shall not be liable for errors contained herein or incidental consequential damages in connection with the furnishing, performance, or use of this material.

This document contains proprietary information, which is protected by copyright. All rights are reserved. No part of this document may be photocopied or otherwise reproduced without consent of GE.

Copyright ©2000 - 2006 by GE. Published in a limited copyright sense, and all rights, including trade secrets, are reserved.

Document Edition -	First	4/98
	Second	5/99
	Third	8/99
	Fourth	11/99
	Fifth	03/00
	Sixth	10/00
	Seventh	02/01
	Eighth	06/01
	Ninth	07/01
	Tenth	09/01
	Eleventh	01/02
	Twelfth	03/02
	Thirteenth	12/03
	Fourteenth	05/05
	Fifteenth	10/06

The following are products of General Electric Company:

POWER LEADER™ Meter	239 Motor Protection Relay	GE Fanuc Series 90/30 PLC
POWER LEADER Modbus Monitor	269 Plus Motor Management Relay	GE Fanuc Series 90/70 PLC
POWER LEADER Electronic Power Meter	369 Motor Management Relay	Power Quality Meter (PQM)
Spectra MicroVersaTrip	SR469 Motor Management Relay	EPM 7300 Electronic Power Meter
EPM 7600 Electronic Power Meter	EPM 7500 Electronic Power Meter	EPM 7330 Electronic Power Meter
Enhanced MicroVersaTrip-C	SR489 Generator Management Relay	EPM 7700 Electronic Power Meter
Enhanced MicroVersaTrip-D	565 Feeder Management Relay	EPM 3710 Electronic Power Meter
MDP Overcurrent Relay	735 Feeder Relay	EPM 3720 Electronic Power Meter
SR750/SR760 Feeder Management Relay	SR745 Transformer Management Relay	Spectra Electronic Control Module
Universal Relay	EPM7430D/EPM7450D (Futura)	Motor Manager II (MMII)
GE-Zenith MX200 (Microprocessor Controller)	GE-Zenith Generator PLC (Series 90-70)	EPM5300P/EPM5200P
EPM5350P (DMMS350)	EPM5000P (DMWH300)	EPM9450Q (Nexus1250)
EPM9650Q (Nexus1252)	EPM8000 (PQMII)	F650 Bay Controller
Remote RTD	Motor Manager III (MMIII)	737 Feeder Relay
Entellisys Low Voltage Switchgear	MIFII Feeder Management Relay	EPM 2000 Digital Power Meter
EPM 1000 Sub-Meter	EPM 4000 Sub-Meter	EPM 6000 Multifunction Electricity Meter
GE-Zenith MX250	GE-Zenith MX150	SMR2
UPS	FIRETRACER	VERSAMAX
MPRO		



GE MULTILIN™

PMCS 6.15

Read-This-Book-First

Microsoft, Microsoft Excel and Microsoft PowerPoint are registered trademarks, and Windows 2000 is a trademark of Microsoft Corporation.

Multilin 269+ Motor Management Relay® are registered trademarks of Multilin Inc., and Multilin SR489 Generator Management Relay™ and Multilin SR745 Transformer Management Relay™ are trademarks of Multilin Inc.

US Pat Nos 5,768,148; 5,764,155; 5,862,391

(This Page is Left Blank Intentionally)

Back to Main Page

Contents

Introduction	6
Welcome	6
How to Use this Book.....	6
About CIMPLICITY PMCS Version 6.15	7
Performance.....	7
Features	7
Supported Devices.....	8
Getting Started	10
First Steps	10
Understanding Terminology.....	10
System Requirements	13
PMCS 6.15 Envelope definition.....	14
Where to Get Help.....	15
What's next?.....	15
Installing the Software	17
Computer Preparation	17
When Installing On Windows 2003 Server.....	18
Installing CIMPLICITY	19
Installing Additional Software.....	20
Installing the EPM Software Components	23
Installing the PMCS software	23
eLicensing PMCS software	23
Host PC Installation.....	25
Viewer Workstation Installation.....	25
PMCS Installation Steps.....	25
After PMCS IIS – Setting up PMCS Server.....	44
Un-licensing PMCS	44
Uninstalling PMCS.....	45
Reinstallation Steps	47
Upgrading from previous versions to PMCS 6.15	48
Working with Cimplicity Viewer Node	50
How to view the screens on a viewer node.....	50
Configuring the Software	52

Organize Your Information	52
Configuration Procedure	54
EPM Device-Special Considerations	57
Introduction	57
EPM Software Components	58
Network Builder: Building the Network Configuration File.....	58
ION Designer: Programming Devices and Software Nodes	58
Communications Server: System Communications	58
ION_LINK DDE Server: Communication with Windows Applications	58
Workstation Configuration Guidelines.....	59
Configuring the EPM Device Network	60
Running Network Builder	60
Building the Power-Monitoring Network in NetBuilder.....	61
Adding Devices (Meters)	65
Saving and Exiting	65
Index	67

(This page left blank intentionally)

Introduction

Welcome

Hello and welcome to the POWER LEADER Power Management Control System for CIMPLICITY® HMI. You are about to begin using your computer in an exciting new way—as a tool to help you increase productivity while reducing downtime and energy costs.

This book is for anyone getting started with CIMPLICITY PMCS. It contains the information you need to install and begin using PMCS effectively.

- *Chapter 2, Getting Started*, explains the terminology of power-management systems, describes each of your PMCS items, outlines the minimum system requirements, and lists methods of getting GE Technical Support.
- *Chapter 3, Installing the Software*, explains how to prepare your system and install all of the PMCS software. Any special installation steps are outlined for each software module.
- *Chapter 4, Configuring the Software*, describes how to efficiently configure PMCS to get up and running in the shortest time.
- *Chapter 5, EPM Device Special Considerations*, details the additional configuration required to use EPM 7700, EPM 7600 and EPM 7500 meters in a PMCS network.

How to Use this Book

You will find this book easy to use if you look for these simple conventions:

- **Boldface** type indicates the name of an item you need to select.
- `Monospace` type indicates an example or text that is displayed on the screen.
- UPPERCASE type indicates a file name, command name, or acronym.

About CIMPLICITY PMCS Version 6.15

CIMPLICITY PMCS Version 6.15 is the latest Power Management Control System in the robust line of POWER LEADER power-management products from GE Multilin. CIMPLICITY PMCS seamlessly integrates the comprehensive line of POWER LEADER devices, as well as many new Modbus RTU devices and systems. PMCS comes with built-in Ethernet compatibility and is optimized for the Windows 2000 and Windows XP operating system. All of this adds up to the most flexible, high-performance, open-architecture power-management system available. PMCS software is the backbone of your new power management system, with state-of-the-art graphics and features designed to maximize productivity and minimize downtime and energy costs.

Performance

With built-in Modbus RTU and Ethernet compatibility, PMCS delivers critical power-management information faster than ever. PMCS supports baud rates of up to 38.4 kbps on a Modbus RTU network and 10 Mbps on an Ethernet TCP/IP network. This results in near “real-time” screen refresh rates and immediate access to critical event and alarm data.

Features

PMCS comes with the following features that make the system more powerful and easy to use:

- Compatible with industry-standard third-party SCADA platforms.
- Built-in Modbus RTU network compatibility for an open network architecture and high-speed communications.
- Built-in Ethernet TCP/IP network compatibility for very high-speed communications and reduced wiring costs.
- Built-in support for the comprehensive line of POWER LEADER power-management devices, as well as additional GE meters and relays, Fanuc 90/30 and 90/70 programmable logic controllers, plus support for third-party meters and relays.
- 3D virtual-device interaction with accurately reproduced device look and feel.
- Improved waveform capture, including extensive analysis tools.
- Comprehensive alarm and event reporting for immediate diagnosis of electrical system problems.
- Single Viewer Workstation support for seamless access and sharing of power-management data across your existing LAN.
- Configurable password protection and user-activity logging for improved security and restriction of setup or control operations.

PMCS option modules are available to further increase productivity and reduce energy costs. Your system may include one or more of the following modules:

- CIMPPLICITY PMCS Interface Toolkit with tools to quickly create accurate, intelligent floor plans, one-line diagrams, and elevation views.
- System Test Simulator to design and test PMCS systems without connection to real networks or devices.

Supported Devices

CIMPPLICITY PMCS 6.15 supports the following devices. Firmware revisions other than those listed may not be compatible with PMCS. Contact your GE Sales Representative or the GE Resolution Center, at 1-888-GE-RESOLV for more information.

IED Product	Versions Supported	IED Product	Versions Supported
239	2.3x to 2.7x	Spectra MicroVersa Trip	5.1x
269+	6.0x	Enhanced MicroVersa Trip C	4.1x
369	1.6x to 2.3x	Enhanced MicroVersa Trip D	4.1x
469	2.5x to 5.0x	EPM1000	3.8x
489	1.3x to 4.0x	EPM2000	1.0
735/737	1.5x	EPM4000	3.8x
745	2.4x to 5.0x	EPM5000P	2.4x
750/760	3.6x to 7.0x	EPM5200P	2.4x
F650	1.6x to 2.20	EPM5300P	2.4x
MMII	4.0x to 5.1x	EPM5350P	2.4x
MMIII	1.0x to 1.2x	EPM6000	1.0
MIF2	1.0	EPM9450Q	2.1x
PQM	3.3x to 3.6x	EPM9650Q	2.1x
PQMII	1.0x to 2.2x	PLEPM	1.0x
RRTD	1.4x, 1.5x	MX150	5.4x, 6.0x
SPM	2.0x, 2.1x	MX250	5.4x, 6.0x
		SMR2	1.0
B30	2.6x to 5.0x	MPRO	1.0
C30	2.6x to 5.0x	FIRETRACER	1.0
C60	2.6x to 5.0x	UPSLP	1.0
D30	3.0x to 5.0x	UPSSG	1.0
D60	2.6x to 5.0x	VERSAMAX	1.0
F35	2.6x to 5.0x		
F60	2.6x to 5.0x		
G30	4.4x to 5.0x		
G60	2.6x to 5.0x		
L60	2.6x to 5.0x		
L90	2.6x to 5.0x		
M60	2.6x to 5.0x		
N60	3.4x to 5.0x		
T35	2.6x to 5.0x		
T60	2.6x to 5.0x		

Note:

UR has been categorized into three different Device Types.

-
- UR** - supports 2.6x to 4.6x
 - UR480 - supports 4.8x
 - UR490 - supports 4.9x and 5.0x

(This page left blank intentionally)

Getting Started

First Steps

If you are already familiar with PMCS, simply review the system requirements and skip ahead to **Chapter 3**.

Getting started with PMCS is easy. This chapter explains power management and leads you through the steps to take prior to installing your PMCS software. If you need help with your PMCS system, the GE Technical Support telephone number is given at the end of this chapter.

Understanding Terminology

Power-management system terminology can be intimidating to new PMCS users. The list below defines many of the important terms and acronyms used in this guide and other PMCS manuals. Refer back to this list as new terms are presented later.

Baud rate: A measurement of a communication channel's signaling rate or information-carrying capacity. Communicating devices typically have configurable baud rates to provide compatibility with various speed communication networks. Higher baud rates generally provide faster data-refresh times.

CIMPLICITY HMI: An industry-standard SCADA software package providing flexible, accurate, and easy-to-use graphics. CIMPLICITY HMI is based on client-server architecture, consisting of Servers and Viewer Workstations. Servers are responsible for the collection and distribution of data. Viewer Workstations connect into Servers and have full access to the collected data for viewing and control actions. Servers and Viewer Workstations can be easily networked together to seamlessly share data without the need to replicate your point database from node to node.

CIMPLICITY HMI Server Development: CIMPLICITY HMI Server Development allows you to create new projects and can also function as a runtime system.

CIMPLICITY HMI Server Runtime: CIMPLICITY HMI Server Runtime systems do not support project configuration. They may be used as runtime systems only.

CIMPLICITY HMI Viewer Runtime: CIMPLICITY HMI Viewer Runtime connects to Servers for viewing data and controlling actions.

Commnet: A GE Industrial Systems standard for device communications that specifies the communication protocol and the communication network.

Communication network: A physical standard for wiring and interconnection of communicating devices. A communication network standard usually includes specifications of voltages, maximum cable-run lengths, shielding, termination, and cable requirements. RS485 and Ethernet are examples of communication-network standards.

Communication protocol: A language or convention used for reliable transmission and reception of binary data. A communication protocol is often independent of the physical method or network used for transmission. Modbus RTU and TCP/IP are examples of communication protocol standards.

DDE Server: A software application that typically runs in the background, gathering information from the network and providing the information in DDE format for use by one or more applications. The PMCS DDE Server is included in the PMCS Network & Device Configurator and comes in versions optimized for Ethernet TCP/IP or RS485 Modbus RTU networks.

DDE: Dynamic Data Exchange. A Microsoft Windows standard for efficient sharing of data between applications on the same PC. See also **NetDDE**.

Ethernet Gateway: A POWER LEADER device used to connect four RS485 Modbus RTU networks to an Ethernet TCP/IP network. The Gateway increases performance of a PMCS system through multiple Modbus networks and reduces overall wiring costs through reuse of existing Ethernet LAN wiring.

Ethernet: An industry-standard communication network commonly used for local-area networks (LANs) of PCs. Ethernet PMCS systems provide very high-speed, reliable communications at 10 megabits per second.

Event Logger: A standard PMCS application that efficiently analyzes, sorts, and logs unusual system behavior such as circuit breaker trips, undervoltages, and overcurrents. Extensive data-logging capabilities make it a useful tool for analyzing and predicting system maintenance patterns.

Host PC: The PC running the PMCS DDE Server is referred to as the Host PC. All other PCs running PMCS client programs are referred to as Viewer Workstations or networked PCs.

Interface Toolkit: An optional PMCS tool used to quickly generate accurate and friendly graphical user interfaces. The Interface Toolkit provides dozens of wizards to efficiently create intelligent one-line diagrams, equipment elevation views, floor plans, 3D virtual-faceplate views, and tabular displays.

Modbus Concentrator: A POWER LEADER device used to connect eight commnet networks to an RS485 Modbus RTU network. The Concentrator provides full compatibility between the PMCS software and the extensive line of POWER LEADER devices with commnet communications, as well as simple expansion of a RS485 Modbus RTU network to up to 247 devices.

Modbus RTU: An industry-standard, nonproprietary communications protocol typically used in medium-speed networks (up to 38.4 kbps) on RS485.

Multinet: Multinet is an Ethernet communications module that allows connection for up to 32 ModBus devices, providing ModBus TCP/IP communications for these devices over Ethernet. This allows connection to Fiber Optic LAN and WAN systems for remote access to data

NetBEUI: A network protocol usually used in small, department-size local-area networks of 1 to 200 clients.

NetDDE: A version of Dynamic Data Exchange (DDE) that allows communications between applications running on different PCs over network connections.

NT Service: A designated piece of software which runs in the background of Windows NT and can be set to automatically start when the machine is booted up. For example, the PMCS DDE Server can be set to operate as a Windows NT Service, rather than a manually launched application. Another advantage of NT Services is that they are persistent across multiple user logins and logouts; that is, PMCS DDE Server when operating as a Windows NT Service will not shut down when a user logs off.

ODBC: Open Database Connectivity. An inter-application communication protocol required for certain PMCS client applications to share data. Automatically installed and configured as part of the PMCS installation routine.

PMCS: Power Management Control System. GE's high-performance power-management system for Windows 2000, including open network protocols, waveform capture and analysis, event logging, and several optional modules.

POWER LEADER: The family of GE power-management devices, including meters, relays, trip units, and software.

RS485: An industry-standard communication network supporting up to 32-networked devices. RS485 provides medium-speed, reliable communication transport through shielding, balanced transmission voltages, and termination.

SCADA: Supervisory Control and Data Acquisition. A category of systems that primarily acquires data for logging and analysis, as well as providing supervisory control in applications without time-critical requirements. Power-management systems are a direct application of SCADA technology.

TCP/IP: Transmission Control Protocol / Internet Protocol. An industry-standard protocol typically used on Ethernet or Token-Ring local-area networks (LANs).

Waveform Capture: A standard PMCS application that provides a window into power-quality data in an electrical system. Waveform Capture is used to view snapshots of voltage and current waveforms from various points in an electrical system to analyze harmonics and unusual system behavior.

System Requirements

The following table shows the minimum and recommended PC system configuration for running PMCS Version 6.15. Note that regardless of configuration, the PC system must be Windows NT-certified according to the *Windows 2000 with Service Pack 4 or Windows XP with Service Pack 2 Hardware Compatibility List*, available from Microsoft (www.microsoft.com). In addition to the requirements described below, setting up PMCS and EPM 7700 workstations will require Windows NT Administrator-level authority privileges.

Recommended
1GHz or greater single processor Dell OptiPlex
Windows 2000 SP4 Professional
Windows XP SP2 Professional
Cimplicity HMI Version 6.1 SP5
512MB or greater RAM
512K cache
30GB or greater AT-100 hard drive
10/10/32 CDRW (not operating burning CDs while application is running)
2 10-BaseT Ethernet Cards (static IP addresses only- no DHCP support)
1 parallel port printer
1 analog phone modem (no Winmodems)
.Net Framework 1.1.4322(if not installed PMCS setup will install this component)
Internet Services Manager (IIS)

Additional hard disk space is recommended for increased storage of log and trend data. Also recommended are an uninterruptible power supply (UPS), 17" or larger monitor, tape drive or other backup mechanism, and (if Remote Access technical support is desired) a 28.8 Kbps or faster modem.

The version of CIMPLICITY installed must be 6.1 with Service Pack 5. Also, the "Advanced DDE Communications" option must be installed.

Microsoft Internet Explorer 3.02 or later is required to run the EPM 7700 component help system. To take advantage of all available HTML help features, Internet Explorer version 4.0 or higher must be installed. (The latest version of Internet Explorer is available at www.microsoft.com.)

Please note that the host PC requirements are directly tied to the complexity of your PMCS system. The minimum requirements will suffice for a simple PMCS system. However, as the number and complexity of your power management device grows, and you add more complex software requirements such as custom interfaces designed with third-party HMI tools, your PC requirements increase as well. A faster processor and more memory provide better performance for your PMCS system.

PMCS 6.15 Envelope definition

1) Physical System Size

- 75 power management devices (IEDs) (100 max),
- 150 I/O points (through IEDs or PLCs)
- 64 ethernet serial communications ports,
- 2 Modbus Monitors (maximum) using standard Modbus Monitor Proxy

2) HMI Application Size -

- 20,000 points/tags in HMI database (30K Max)
- 600 HMI alarms configured max
- 600 trended points (8 max per device)
- HMI I/O rates, alarm rates, and logging rates not to exceed 750 pts/sec
- 13 HMI screens in CIMPLICITY utilizing Power Builder -10 device type and 50 user screens
- 150 HMI screens in InTouch
- 5 DDE ports in CIMPLICITY with no more than 10 devices configured per port
- 10% of tags connected to enterprise solution
- Web-enabled only via CIMPLICITY WebView - no waveform or event viewers
- Maximum of one Viewer node

3) Special Application Issues

- No redundancy
- Components to be run as NT services by default

4) Performance

Response times:

- 1 second or less to open an HMI screen
- **1 seconds update time to populate a screen per device per serial port*(Except for UR Device)**
- 4 to 7 second time delay to display event in PMCS Event Viewer
- 1 second response time to make device change (settings/ command coil) not including device feedback
- 1000 device events/ sec burst support

Configuration:

- Maximum 15 devices per serial port
- Device baud rates set to maximum
- CIMPLICITY HMI points set for on-demand
- Devices supporting 125 register block reads
- Average CPU utilization <35%
- 99% system uptime

Where to Get Help

The GE Industrial Systems Resolution Center is available at 1-888-GE-RESOLV to answer your questions about installing or using PMCS. Please have your product serial number(s) ready when calling.

Also, technical notes are available on the Internet at:
<http://www.ge.com/industrialsystems/pmsys/Technote/noteidx.htm>

What's next?

The following chapters discuss the details of installing and getting quick results from your new PMCS software. Set aside at least an hour and be sure to follow the procedures carefully to guarantee correct installation of your PMCS software.

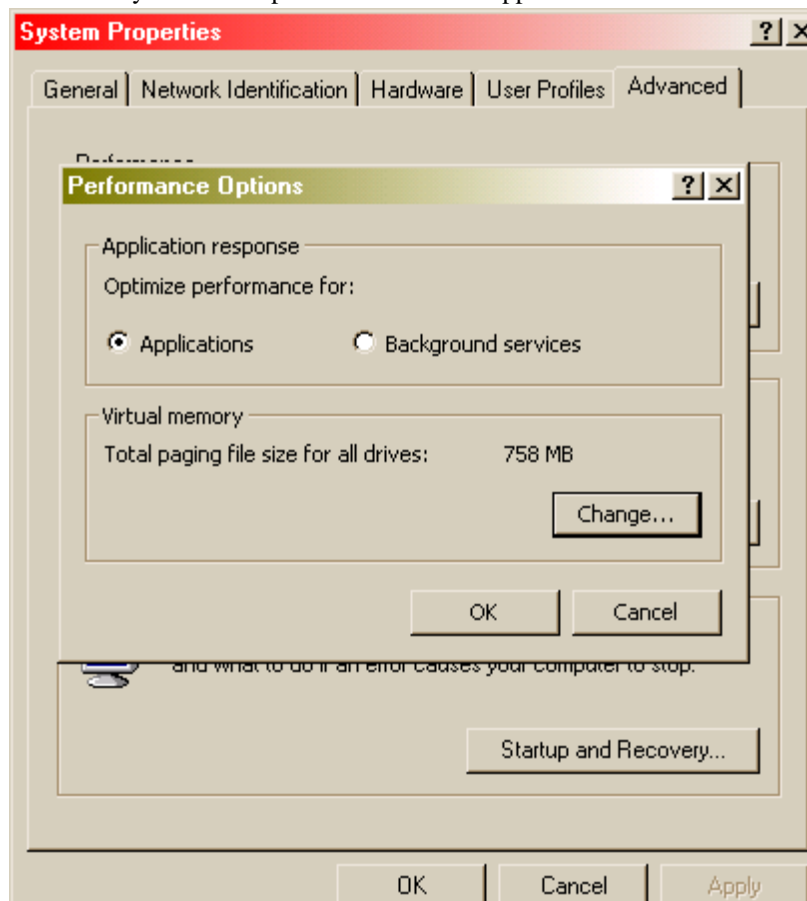
(This page left blank intentionally)

Installing the Software

Computer Preparation

PMCS must be installed on a PC running Windows 2000 SP4. This host PC must be dedicated to the PMCS system. Performance and data integrity cannot be predicted unless the PC is configured solely for the purpose of running PMCS.

The Windows 2000 SP4 **System** control panel offers a **Performance** tab that allows you to boost performance for the applications as shown below:



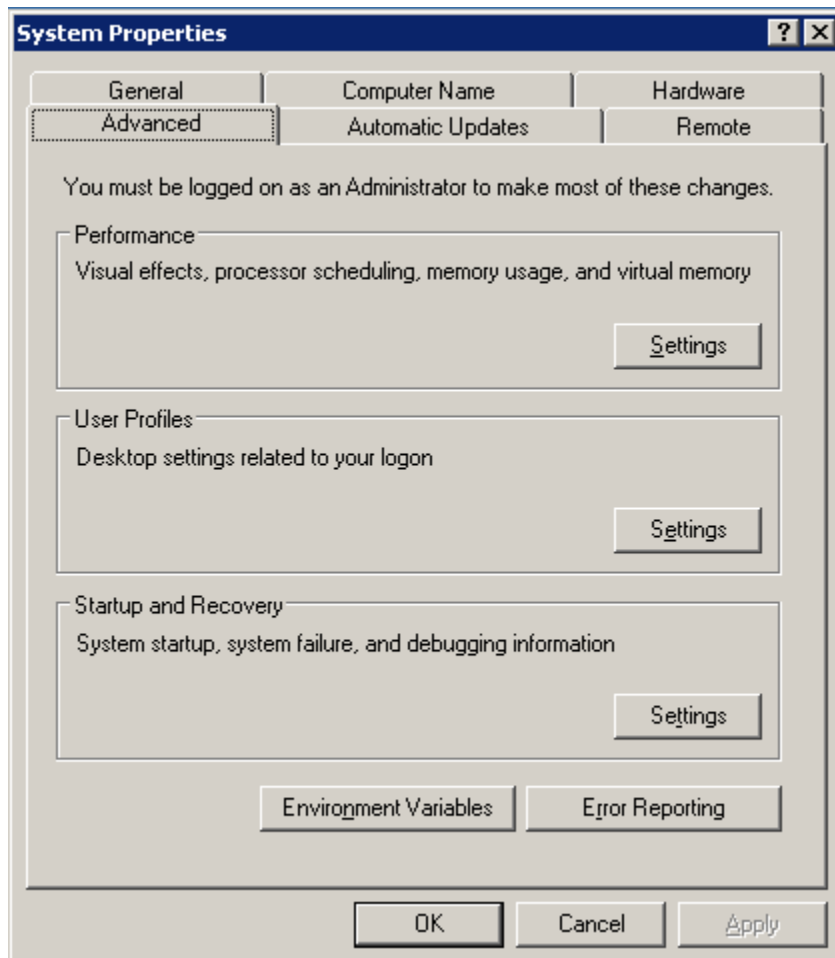
The **Virtual Memory** setting may be left at the Windows 2000 SP4 defaults.

Make sure your system meets these requirements before proceeding with the remaining installation steps. PMCS will not run correctly unless these requirements are satisfied.

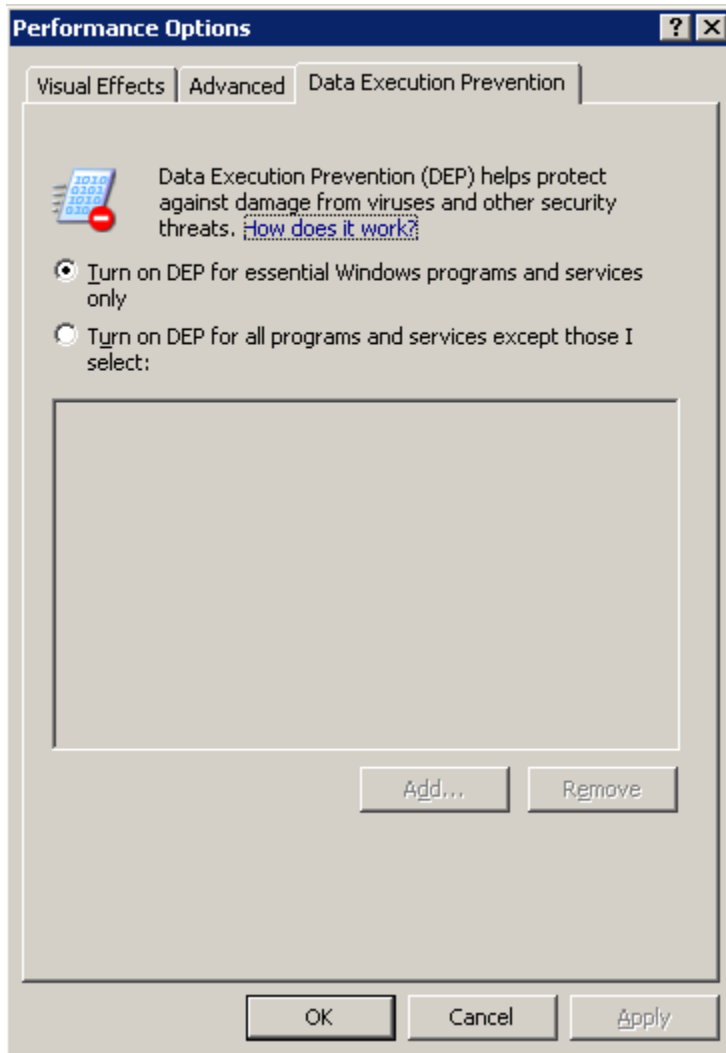
When Installing On Windows 2003 Server

The Following steps to be executed before starting the PMCS installation. This applies for all the licenses of PMCS application. This is basically to avoid the problem caused by e-license wrapped PMCS applications to open after installation. If the below steps are not done before PMCS installation, the applications will give error message when we open them.

1. Right Click on “My Computer”. Select “Properties”. Select “Advanced”. Below dialog is seen.



2. Click on “Settings” button under Performance heading. Below dialog opens. By default the second one “Turn on DEP for all programs and services except those I select”. Instead of this select the first option as shown in the below dialog. It says “Turn on DEP for essential programs and services only”.



Click on Apply and then click on Ok button. After this restart the PC and then start the PMCS installation process as mentioned in this document.

Installing CIMPLICITY

If CIMPLICITY HMI was provided with your PMCS software, you must install it before proceeding. If your computer already has CIMPLICITY HMI installed, make sure the following requirements are met.

- CIMPLICITY HMI for Windows 2000 SP4 (Intel) Version 6.1 SP5 is required. Other versions of CIMPLICITY may not be compatible with PMCS.

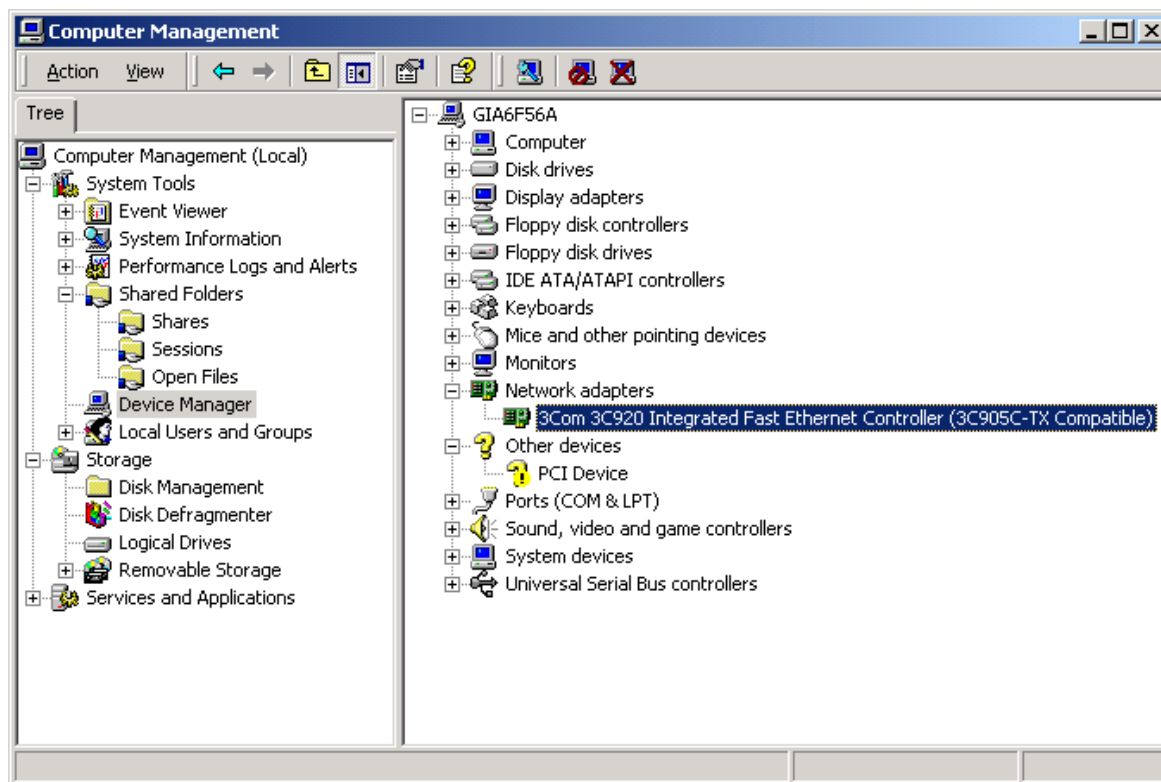
If you are installing CIMPLICITY HMI, follow the directions provided with the software (inside the CD jewel case). Choose **CIMPLICITY HMI** as the product to install, and then select either the **HMI Server** or **Viewer** as the product option to install, and **C:\CIMPLICITY\HMI** as the installation directory. If you install the Server option, also install **Server Option - Communications - Advanced DDE/DDE Client**.

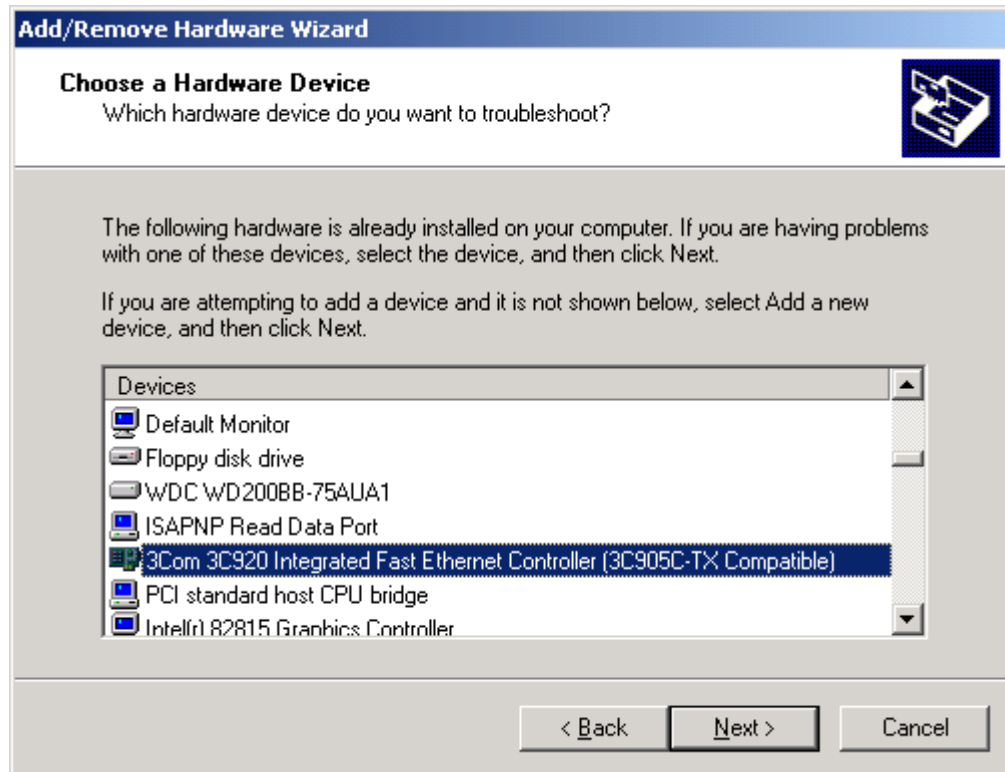
Installing Additional Software

Install any additional software, such as Microsoft Excel, at this point in the procedure. Follow the instruction procedures provided by the manufacturer.

RS485 PMCS Network Interfaces

If you are using an RS485 interface card to connect to the PMCS network, install the card following the manufacturer's installation instructions. Be sure to install any Windows NT drivers provided by the interface-card vendor. Typically, drivers are installed at **Control Panel>Administrative Tools >Computer Management>System Information> Components>Network>Adapter** by following the instructions. You may be prompted to insert the manufacturer's disk into the A: drive.





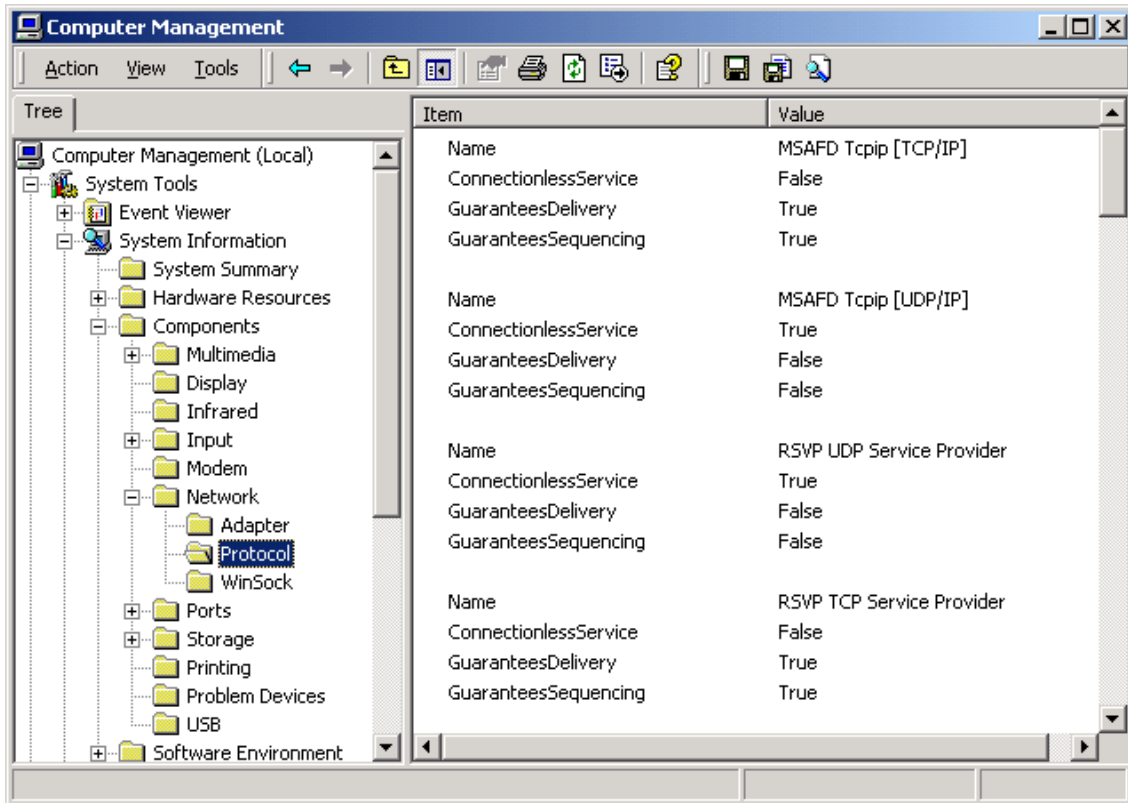
Select the appropriate network adapter from the list and click **Have Disk...**. Follow the instructions provided on the screen to complete the network card installation.

For PMCS systems using one or more GE Multilin RS232 to RS485 converters (or equivalent), no additional drivers are required.

Ethernet PMCS Network Interfaces

If you are using an Ethernet interface card to connect to the PMCS network through one or more Ethernet Gateways or directly to a network of Universal Relays, EPM 9650 / 9450s (Modbus TCP/IP), follow the manufacturer's installation instructions and be sure to install the provided Windows NT drivers using **Control Panel>Administrative Tools >Computer Management>System Information> Components>Network>Adapter**. Refer to the screen shots above for an example, though the selections will differ based on the hardware you are installing.

Ethernet requires the TCP/IP protocol for compatibility with the Ethernet Gateway. TCP/IP should have been installed with Windows 2000 SP4; you can check this using **Control Panel>Administrative Tools >Computer Management>System Information> Components>Network>Protocol**. The screen shot below shows a system with TCP/IP installed. If TCP/IP is not installed on your system, refer to the Windows 2000 SP4 documentation for installation instructions.



Local Area Network (LAN) Interfaces

PMCS supports multiple View Nodes through NetDDE links over a local area network. Thus, in addition to the PMCS network interface, the Host PC may also have a LAN interface.

A Host PC with an Ethernet PMCS network interface may use either the same Ethernet card as the LAN interface or a separate LAN interface card. A Host PC with an RS485 PMCS network interface requires an additional LAN interface card to support View Nodes.

Typical LAN interface cards include Ethernet and Token Ring. Any LAN interface card should be installed according to the manufacturer's instructions.

Installing Additional Software

Install any additional software, such as Microsoft Excel or COMTRADE file browsers for analyzing waveform files, at this point in the procedure. Follow the instruction procedures provided by the manufacturer.

Installing the EPM Software Components

The EPM 7700, EPM 7600 and EPM 7500 Meters require additional software to operate with PMCS client software such as the Event Logger, Waveform Capture Module, or CIMPPLICITY Wizards. This is because the EPM 7700, EPM 7600 and EPM 7500 are not compatible with the standard PMCS DDE Server. Instead, a separate DDE Server called the 7700 Gateway Server must be installed, along with a pair of 'helper' applications, the Communications Server and the ION_Link Server. The Communications Server processes all communications between the Gateway Server and/or the ION_Link and the Ethernet-based EPM 7700, EPM 7600 and EPM 7500 meters.

The EPM 7700 software may be selected during the standard PMCS installation routine. If you are not using any EPM devices in your PMCS setup, you do not need to install the EPM options during PMCS installation.

The EPM software components do require some special configuration beyond that required for other PMCS components. Refer to the section titled EPM Device Special Considerations for details after running the installation routine described in this section.

Installing the PMCS software

Once you have set up Windows NT and any third-party software (if appropriate) you are ready to install the PMCS software. PMCS should be installed last, after all other software installations are completed. Your PMCS software is provided on a CD-ROM.

The diagram below depicts the relationship of the Host PC and any optional Viewer Workstations in your system. Follow the specific instructions below for software installation on Host PCs and Viewer Workstations.

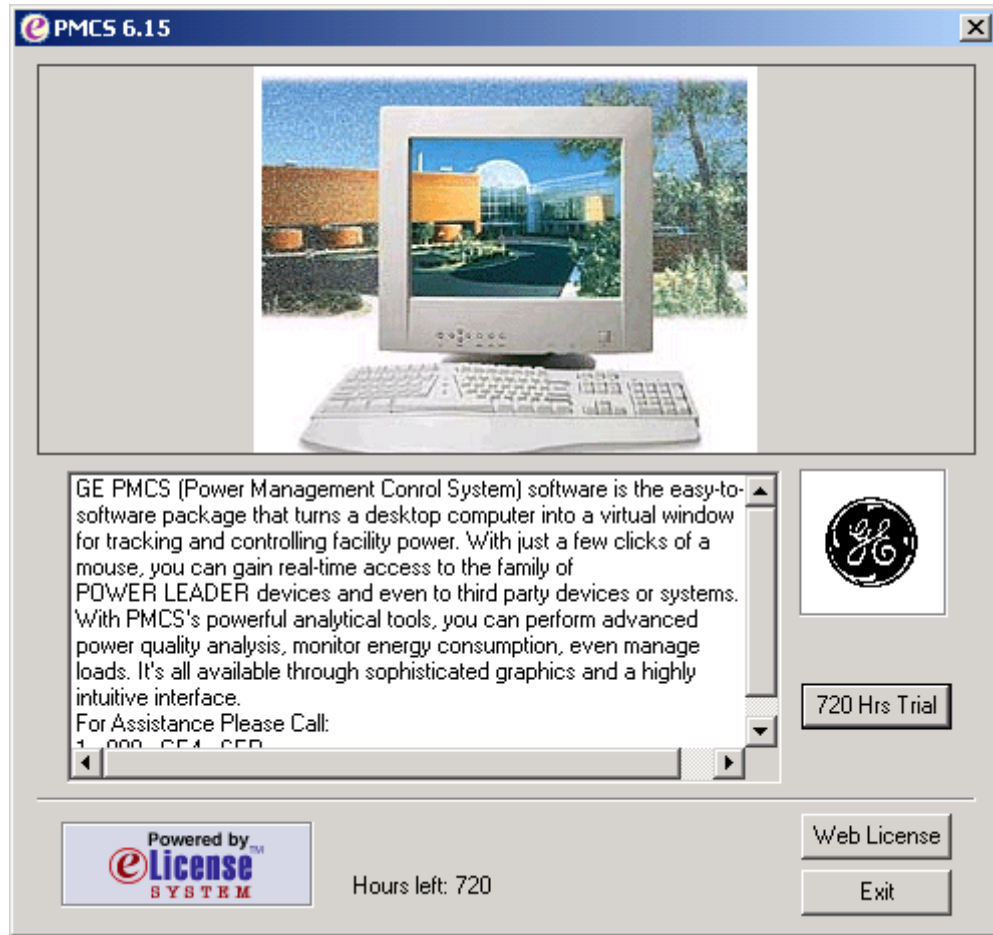


eLicensing PMCS software

General Electric Industrial Systems has added security technology that requires your PMCS software to be licensed in order to run. A separate license is required for each computer that will receive PMCS. Each **eLicense Order ID** that is sent with your order corresponds to one license.

You license your software as part of the automated PMCS installation process. When you launch the installation process the first screen that will appear will be

your eLicense Option screen (see below). This screen allows you to either trial or fully license your PMCS software.



720 Hours (30-Day) Trial

You have the option to Trial PMCS for 720 Hours (30 days) through the **720 Hours Trial** selection on this screen. All functionality of PMCS is available to trial users and all configurations made for the software will be maintained from one use to the next. A single trial is registered to each PC and may not be uninstalled and re-installed for another trial.

Licensing via the Web

Choose the **Web License** option if you have a working Internet connection on your PMCS computer. This option will automatically connect you to General Electric Industrial Systems' eLicense distribution system. Once connected, an automated process will retrieve your unique PMCS **eLicense key**.

Selecting the **Web License** option from the License Option brings you to the Web License Screen. This screen requires you to enter your **eLicense Order ID**. This information is contained on the Order Confirmation Sheet that accompanied your PMCS software or it can be obtained from your Purchase Confirmation e-mail Enter the **Order ID** and click on **Get License** to initiate the Web connection to General Electric Industrial Systems' eLicense distribution system.

Similar to the trial, each eLicense is registered to the computer in which case, the **eLicense Order ID** can only be used for one computer The software must be unlicensed to be re-licensed with the same **eLicense Order ID** on another computer Select **Launch** from your License Installation Success Screen to continue installing PMCS.

Host PC Installation

Every PMCS system requires one Host PC that is directly connected to the PMCS network and communicates with the power-management devices. The Host PC is also typically used to view and analyze data.

If you are installing multiple PMCS catalog numbers on the Host PC, you will need the CD and serial number from each package. Follow the Installation Steps section below. If the Host PC will be providing data to View Nodes, be sure to refer to GEH-6510, *Network and Device Configurator*, to configure NetDDE for operation with the View Node PCs.

Viewer Workstation Installation

PMCS supports optional Viewer Workstations, which interact with the power-management network through NetDDE links to the Host PC. Viewer Workstations are not directly connected to the PMCS network but are connected via LAN to the Host PC. Viewer Workstations are not mandatory in a PMCS system because the data is available for display and analysis at the Host PC. When installing PMCS View Nodes, be sure to use only an appropriate catalog number for the installation. Do not install any other PMCS software on a PMCS Viewer Workstation.

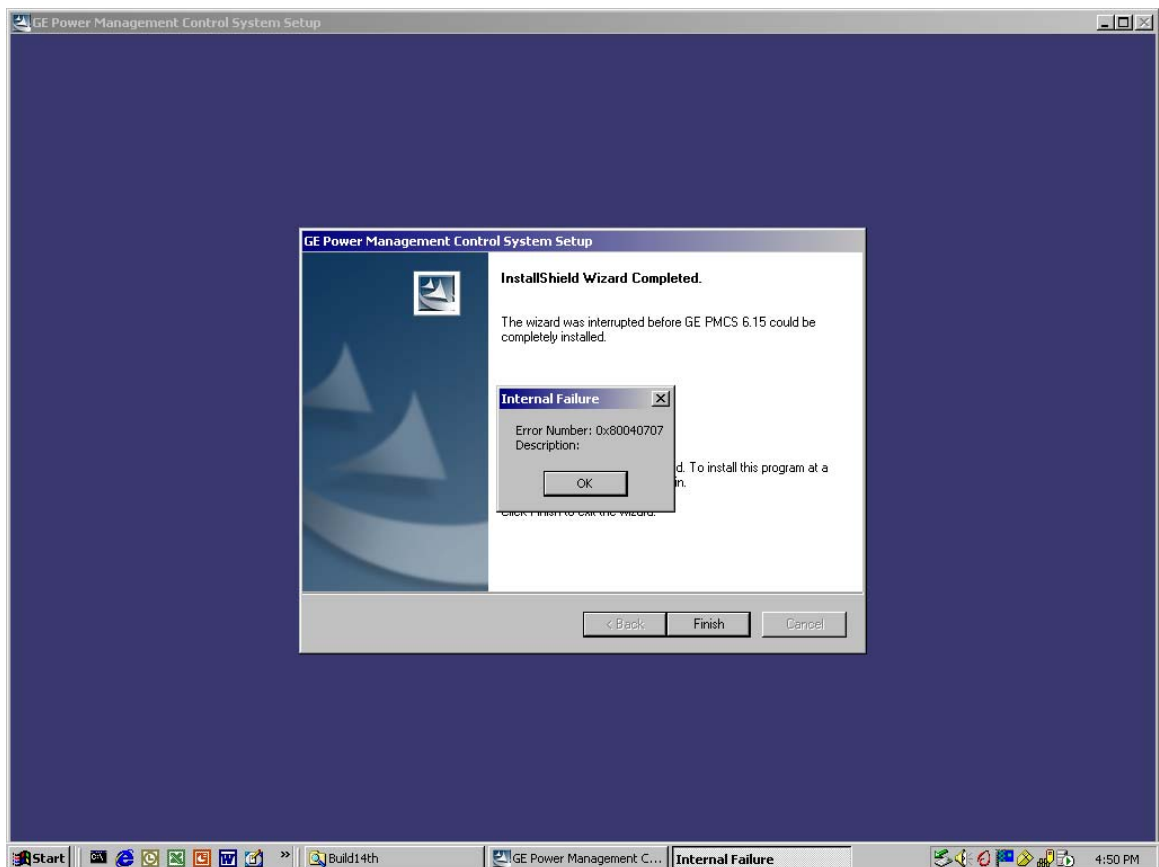
NOTE: The EPM software differs from the standard PMCS usage of Viewer Workstations. Refer to the section titled *EPM Device - Special Considerations* for more details on EPM Workstations and View Nodes.

PMCS Installation Steps

Note:

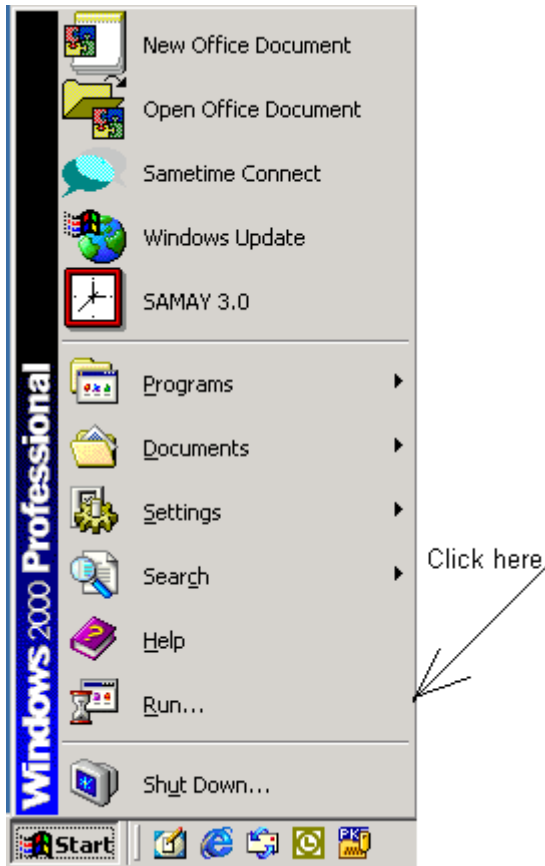
1. **When the system on which PMCS is being installed is not having any database server installed on it. The PMCS 6.15 installation will go ahead by installing MSDE 2000 for PMCS databases. This is applicable for all licenses where database installation takes place.**

2. When the system on which PMCS is being installed is not having any .Net Framework installed on it. The PMCS 6.15 installation will go ahead by installing .Net Framework 1.1.4322. This is applicable for all licenses.
3. When the on which PMCS is being installed is not having IIS installed. The PMCS setup gives option to cancel installation, install IIS and start PMCS setup again or continue with the installation. If continued with installation without IIS installation then the installed PMCS system cannot be used by Remote Viewer Installation to connect as a PMCS Server setup. On Windows 2003 Server machine, after IIS is installed run the steps mentioned in “Application Note 120 – Adding ASP.net component in W2K3 Server. PDF” either after PMCS installation or after PMCS installation.
4. During the steps of installation, if cancel button is clicked then finish dialog pops up. When Finish is clicked a message box titled “Internal Error” pops up. Please click ok and it will cancel the installation. AT any point of time you can again start with the PMCS installation without any problem.



Follow the procedure below to install each PMCS catalog number. Be sure the catalog numbers you are installing are appropriate for the destination PC (Host PC or View Node). Close any open applications before installation.

1. Insert the PMCS Installation CD into the CD-ROM drive.
2. Click the **Start** button from the Windows 2000 SP4 Task Bar and select **Run**.



3. In the **Run** dialog box, enter X:\setup (where X is the appropriate CD-ROM drive designation).



4. The below screen is observed when .Net is not installed on the machine where PMCS is being installed.

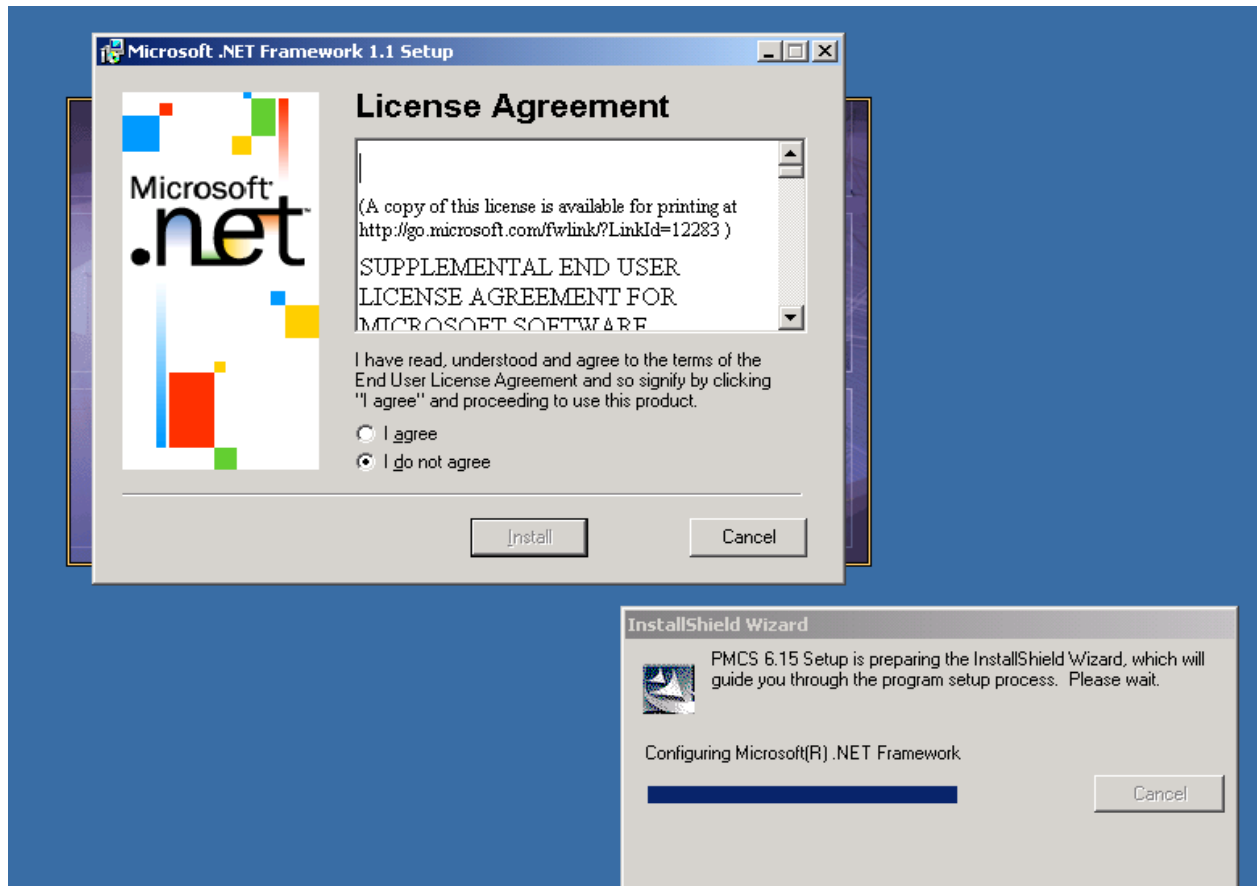


InstallShield Wizard

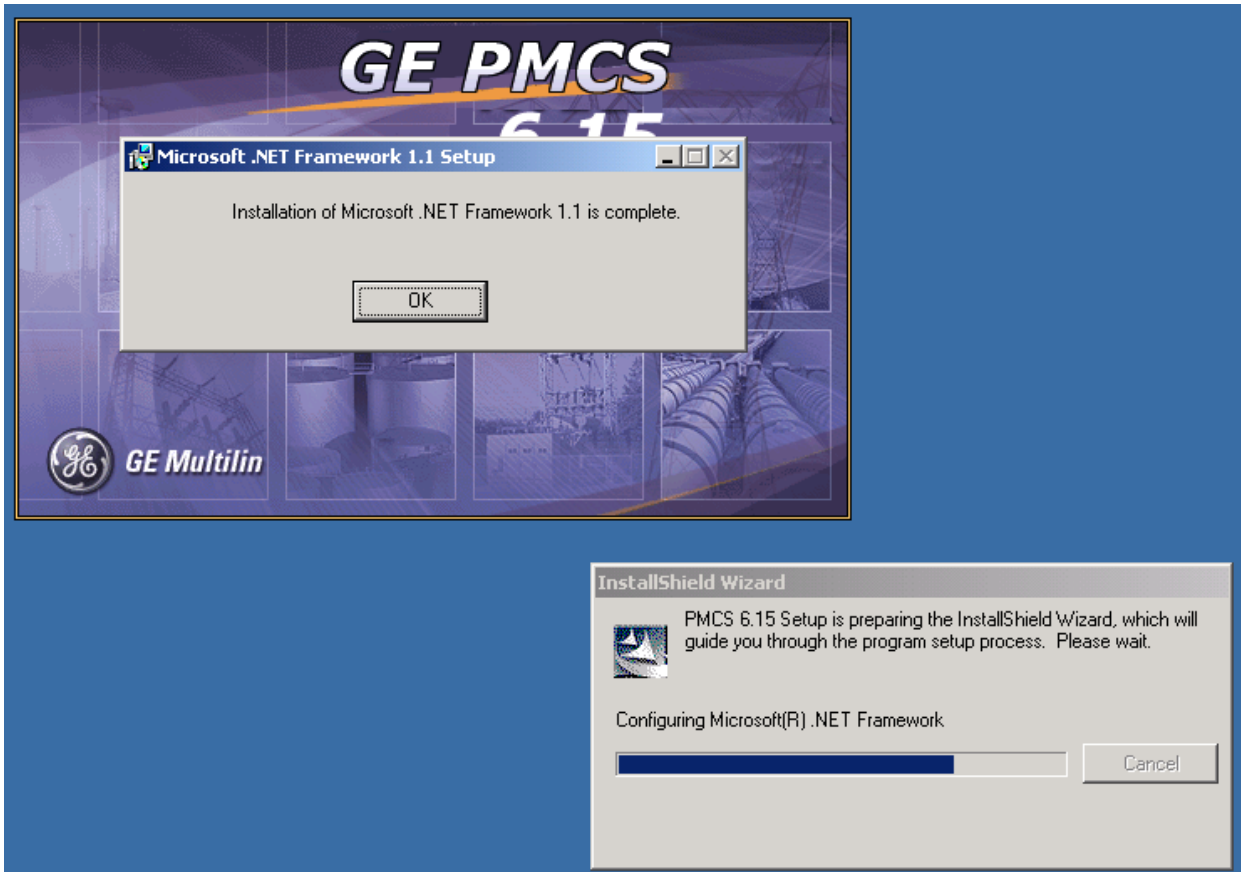
PMCS 6.15 Setup is preparing the InstallShield Wizard, which will guide you through the program setup process. Please wait.

Configuring Microsoft(R) .NET Framework

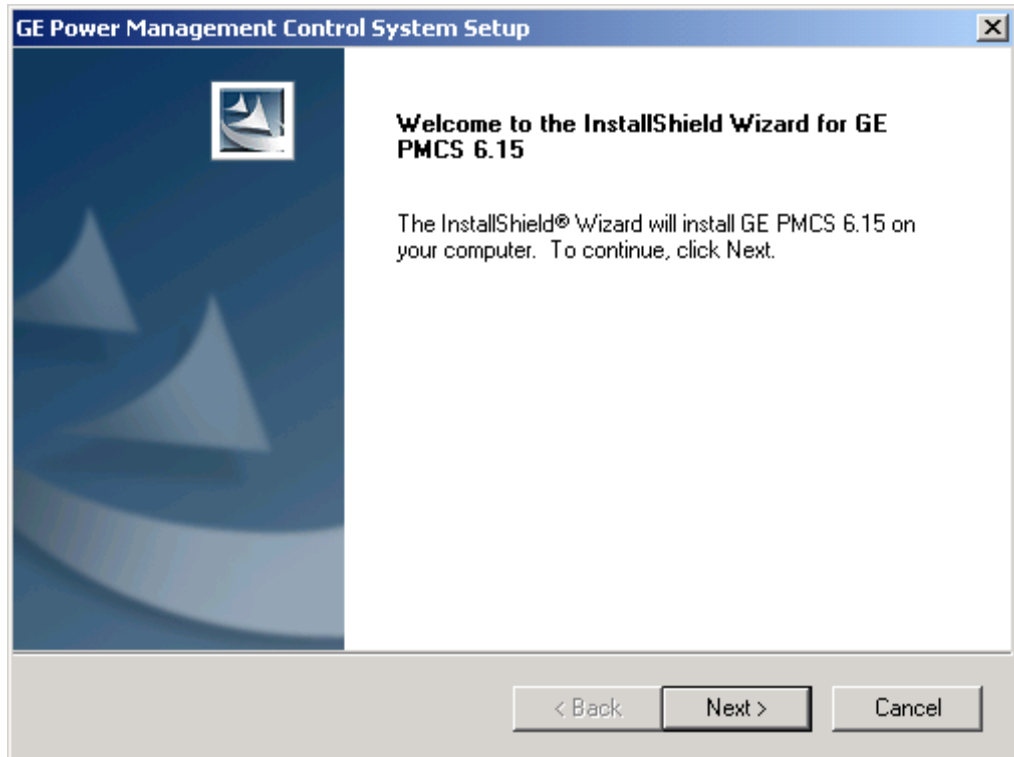
Cancel



5. Click on **I agree** and click on **Install** button. It will now install .Net Framework on the machine where PMCS installation is started. After the .Net installation is completed below message box is displayed. Click **OK** to continue.



6. GE PMCS 6.15 welcome screen appears. When you select the **Next** button in the Welcome screen, the PMCS license agreement screen is shown. Please take a moment to read over the license agreement, and then click **Yes**.



7. At the **User Information** screen shown below, enter your name, your company name, and the serial number for the PMCS component you are installing. Serial numbers for PMCS components are located on the PMCS CD-ROM jewel case. If you make an error in the serial number, the installation routine will prompt you for a correct PMCS serial number. When you have completed the registration information, click **Next**.

GE Power Management Control System Setup

Customer Information

Please enter your information.

Please enter your name, the name of the company for which you work and the product serial number.

User Name:

Company Name:

Serial Number:

InstallShield

< Back Next > Cancel

When you select the **Next** button in the User Information screen, a registration confirmation screen prompts you to verify your entries. Ensure that you have made no mistakes in the User Information fields, and then continue.

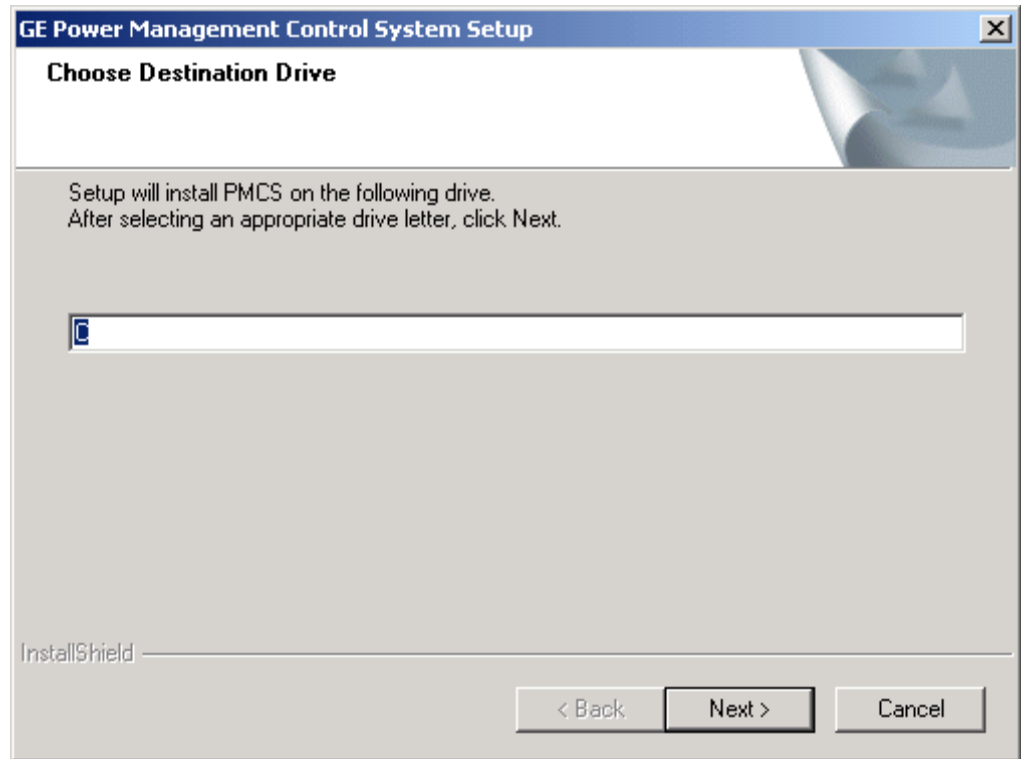
8. If IIS is not installed in the Machine for the licenses it is required. Below message pops up. Click ok to continue without IIS or click cancel to abort PMCS installation, install IIS and start PMCS setup again.

PMCS 6.15 IIS Information

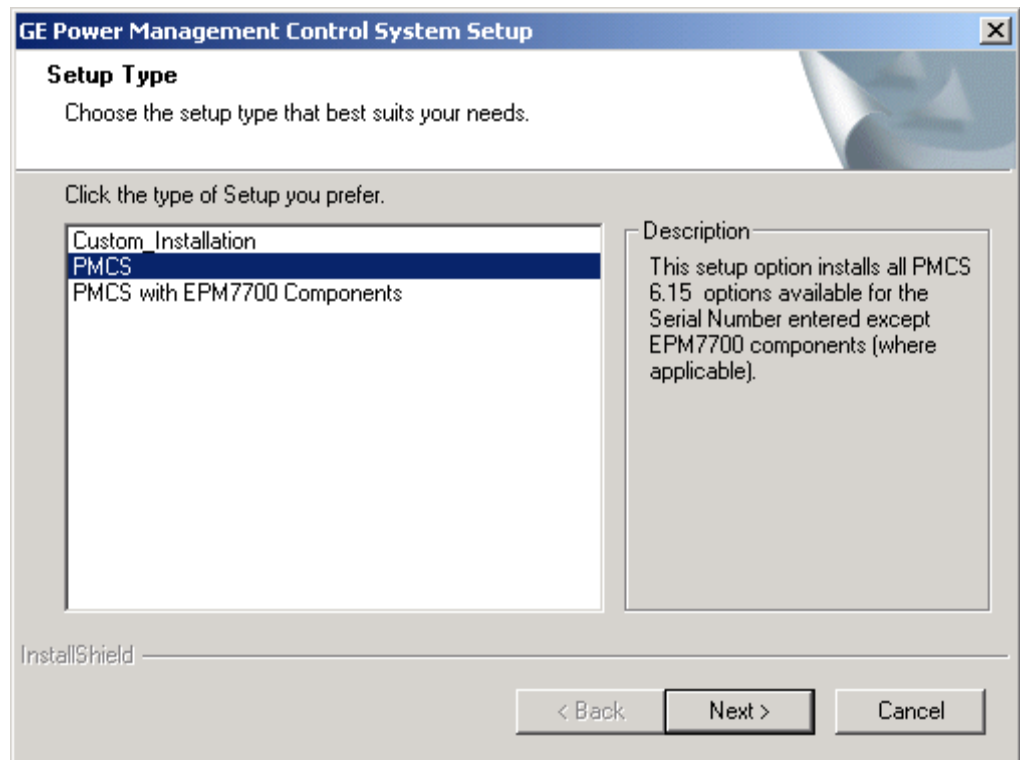
This installation of PMCS needs IIS to be present on this machine for any PMCS Remote Viewer Operation. IIS is not Installed in this machine now. Click cancel, install IIS and start PMCS installation again to enable Remote Viewer Operation. Click ok to continue with the installation.

OK Cancel

At the Choose Destination Location dialog, specify a drive on which to install PMCS. Default is "C". Click **Next** to continue.



- At the **Setup Type** screen, select Custom installation, standard PMCS installation, or PMCS with EPM 7700 Components. PMCS installation is recommended and will install all components for the PMCS catalog number you entered in the User Information screen. Select PMCS with EPM 7700 Components if you will be installing EPM 7700, EPM 7600 or EPM 7500 devices in your network. Select Custom if you wish to select specific PMCS software components to install. Choose the type desired and Click **Next** to continue.

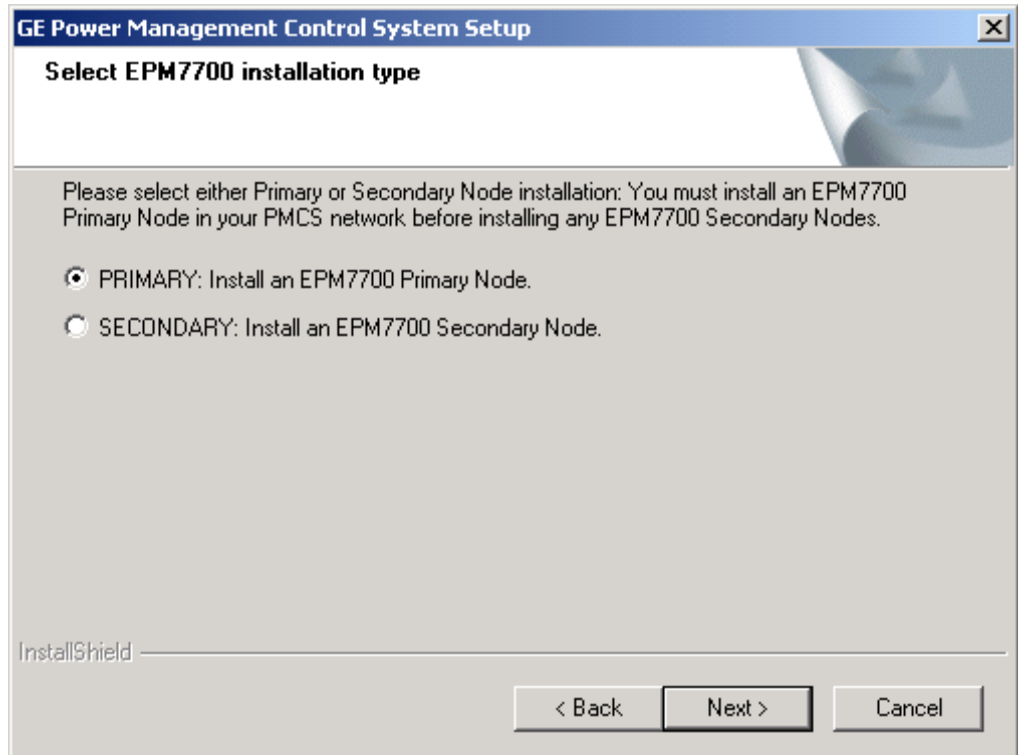


NOTE: This dialog does not appear for certain license keys of PMCS, they are - PMCS View node license where Remote Viewer gets installed, for low cost server catalog, for SCADA catalog, for Only Serves catalog. After step 8 the step 13 follows. Otherwise the below steps are followed.

If you select PMCS with EPM 7700 Components, you may also be required to view an additional license agreement for MS Data Access components. This software is required by the EPM 7700 software. Take a moment to read the license agreement information, then continue.

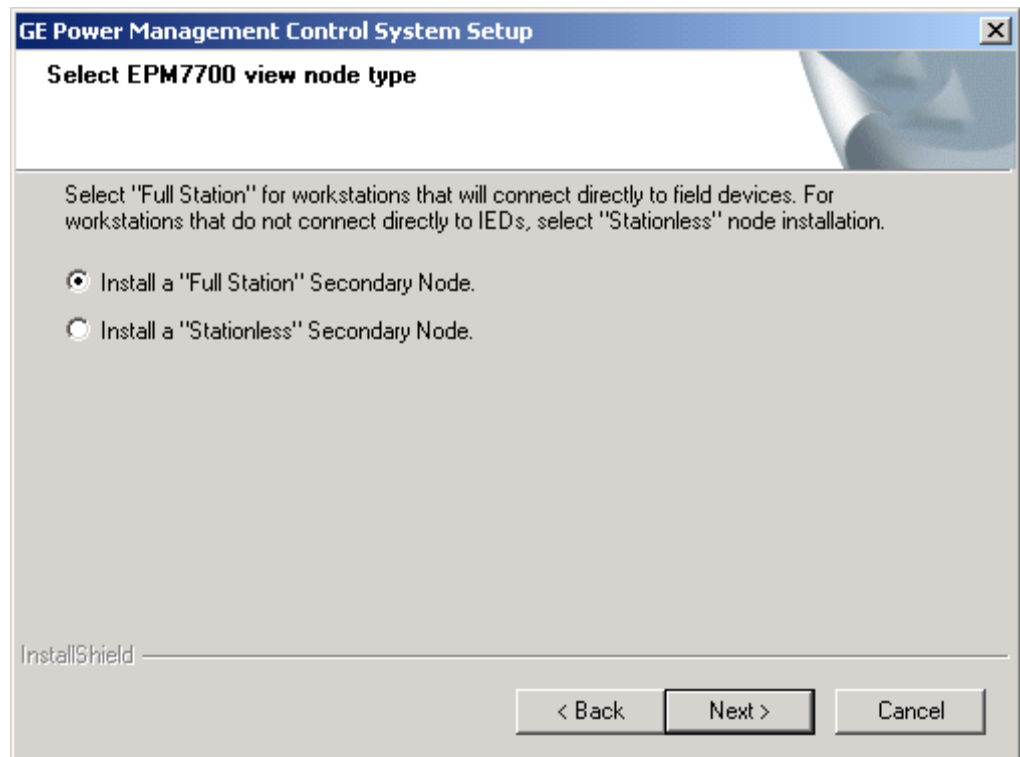
10. If you did not select “PMCS with EPM 7700 Components” in the Setup Type dialog box (Step 9), skip this step and proceed to Step 13.

If you are installing the EPM 7700 Components, select whether this is to be a Primary node installation or Secondary node installation. You must install at least one Primary node on your PMCS network; it is recommended that you install the Primary node at the same machine as the PMCS DDE Server for convenience in configuration. Secondary nodes are akin to PMCS view nodes and may be installed on remote machines to access EPM 7700 data from the Primary node. (For additional details on Primary and Secondary nodes, see the section on configuring EPM 7700 components later in this chapter.)



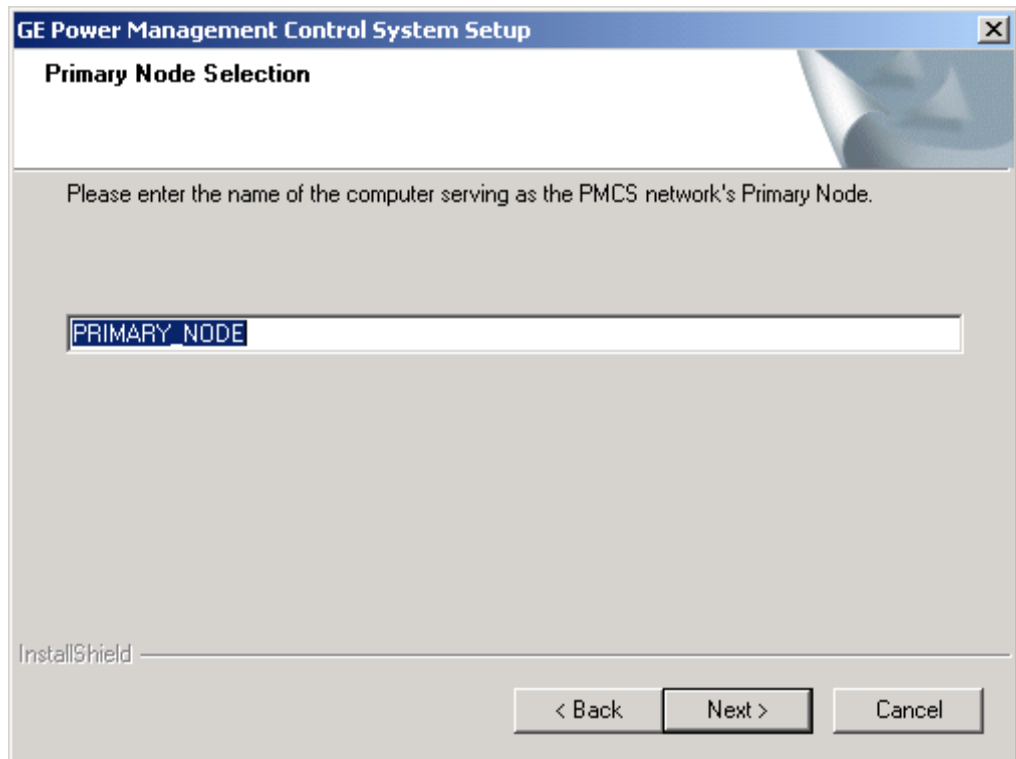
11. If you did not select "PMCS with EPM 7700 Components" in the Setup Type dialog box (Step 9) or if you selected "Primary Node Installation" in Step 10, skip this step and proceed to Step 13.

If you selected Secondary Node installation in Step 10, the following dialog box appears prompting you to select either "Full Station" or "Stationless" node installation. If you are installing software on a computer that will service EPM 7700, EPM 7600 or EPM 7500 IEDs directly, choose "Full Station". If you are installing software on a computer that will not be connected to IEDs but will be used to access data from other network workstations, choose "Stationless". For more details on EPM 7700 network configuration, refer to the *EPM Device Special Considerations* section later in this manual, or to DEH-40035, the *GE 7700 Gateway User's Guide*.

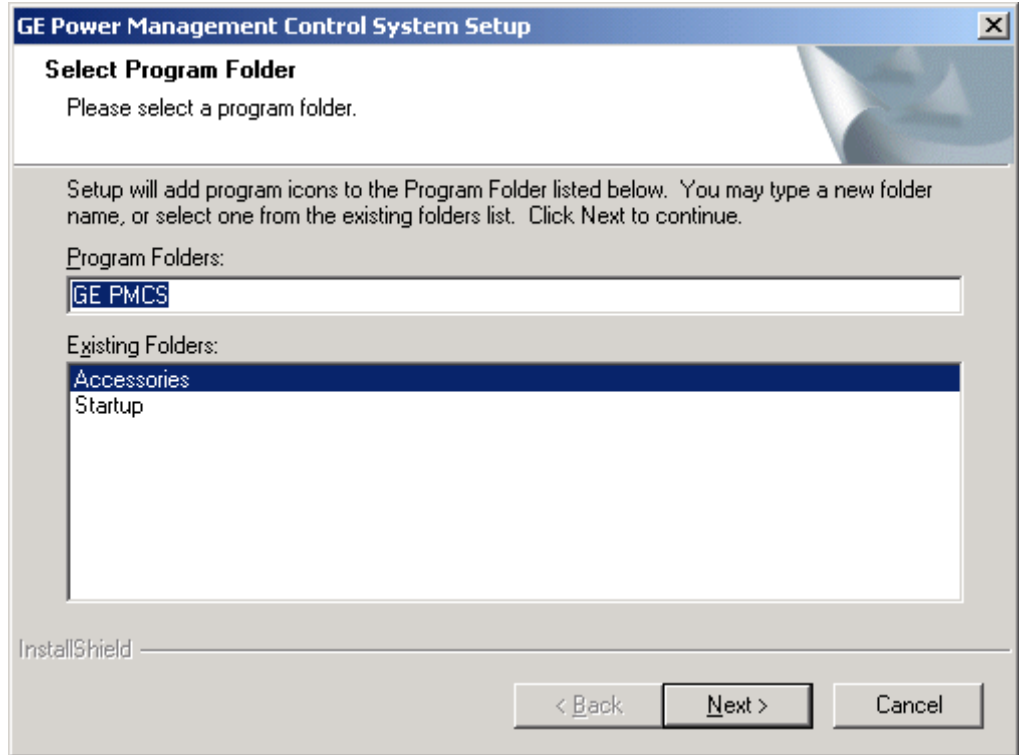


12. If you did not select “PMCS with EPM 7700 Components” in the Setup Type dialog box (Step 9), or if you selected “Primary Node Installation” in Step 10, skip this step and proceed to Step 13.

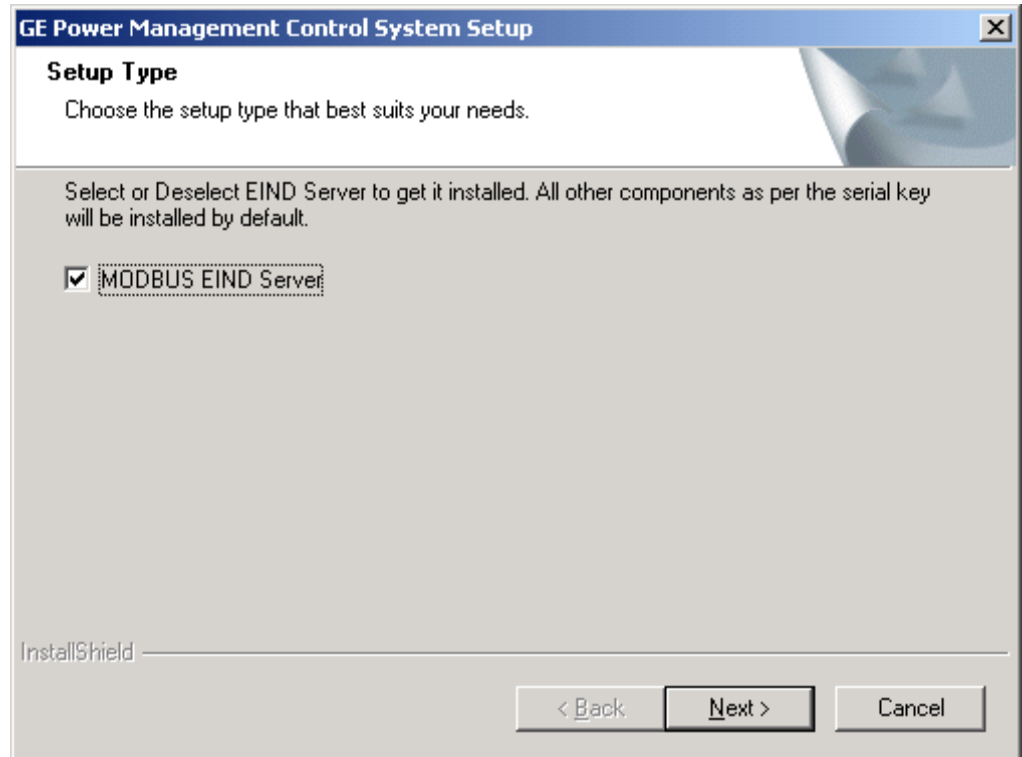
If you selected Secondary Node installation in Step 9, the following dialog box appears prompting you for the name of the computer on which the Primary Node is installed.



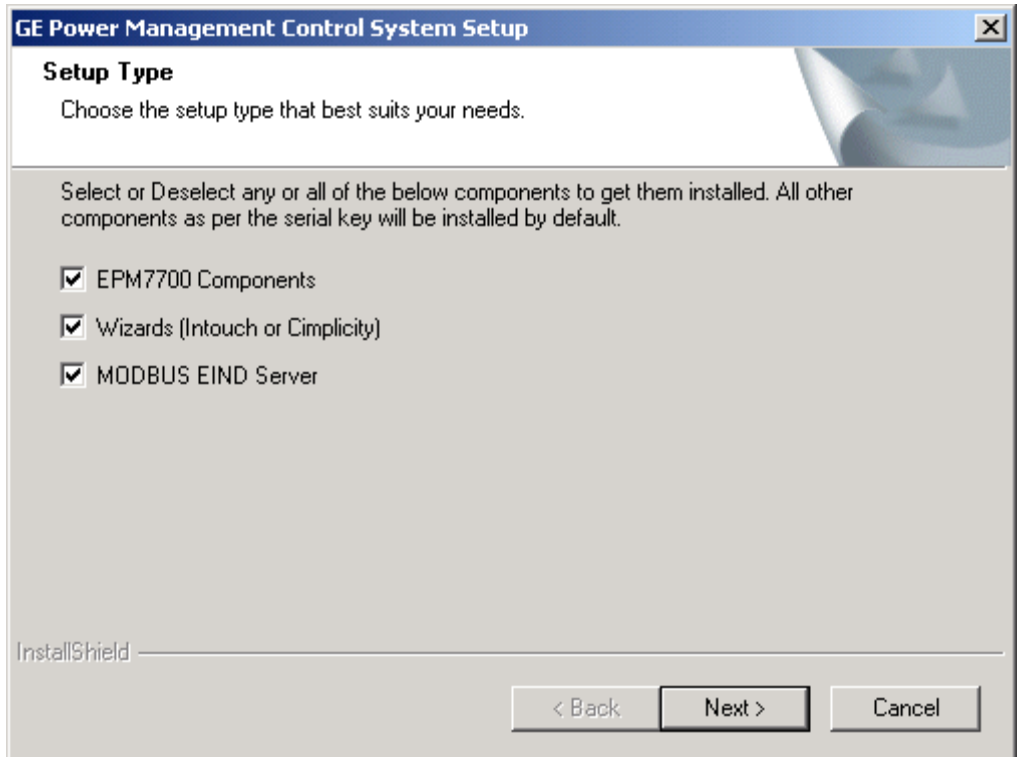
13. Select the Program Folder for PMCS installation. It is recommended that the default Program Folder be chosen. Click **Next** to continue.



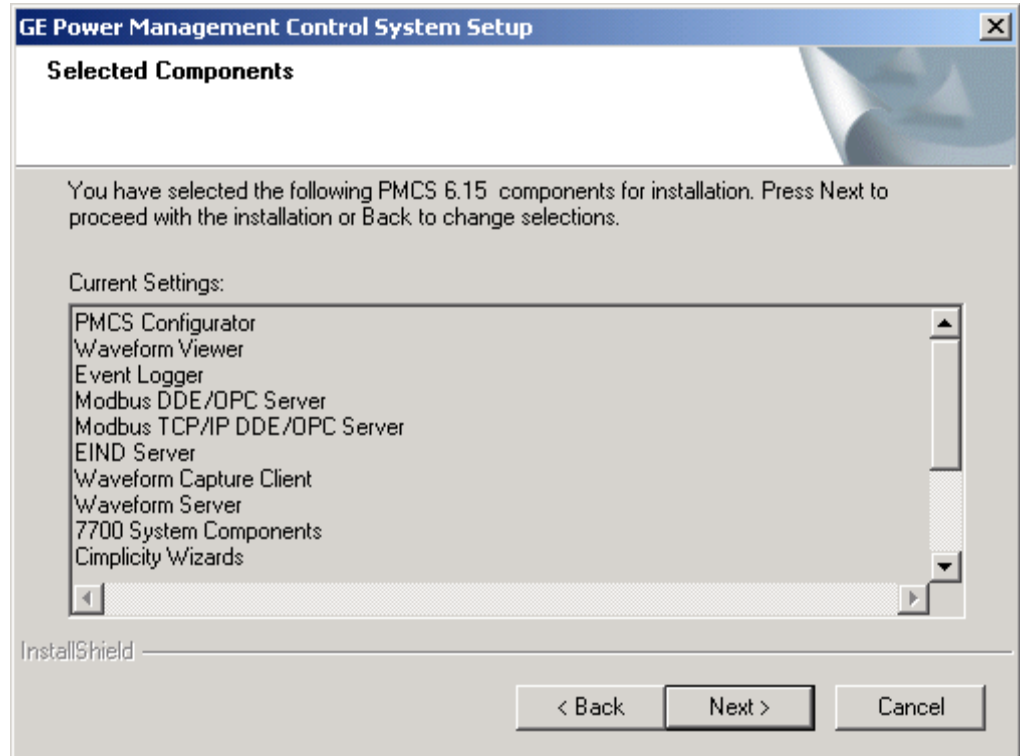
14. If you chose the “PMCS” installation, you may be presented with one DDE Server selections depending upon the PMCS catalog number you entered in the **User Information** screen. Select this DDE communication server if you wish to use it on your system. By default it is selected you can deselect it if intend to not to use it.



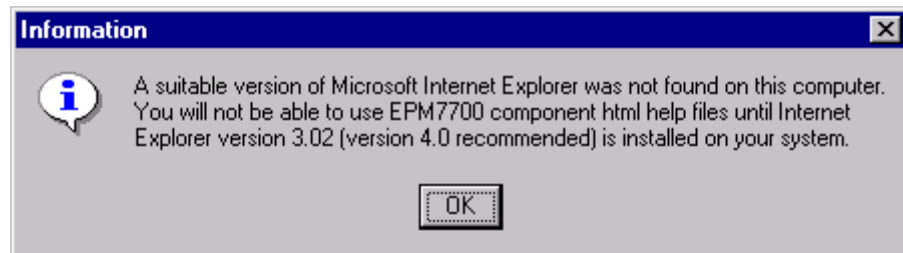
15. If you chose the “Custom Installation” then you will be presented with the dialog which gives option to select one DDE Server which is EIND, option to select or deselect the wizards installation and option to select or deselect EPM7700 components. the dialog shown looks as mentioned below.



16. The **Selected Components** screen offers you the opportunity to verify the installation settings before any files are copied to your hard drive. Confirm that the installation settings are correct, then click **Next**. The installation program copies the appropriate files to your hard drive.



If you have selected the EPM 7700 System Components (either manually when performing a Custom install or automatically when PMCS with EPM 7700 Components install is selected), the installer will check your system for a copy of Microsoft Internet Explorer, version 3.02 or higher. This is because the EPM 7700 software components use .html-format help files which require Internet Explorer to view. If Internet Explorer is not found, the following dialog box appears:

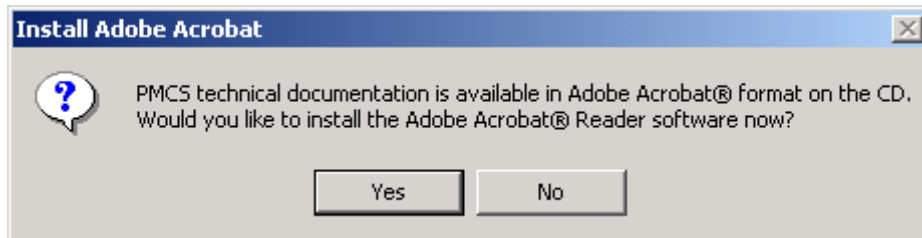


If you wish to view the EPM 7700 software help files, you should separately install Microsoft Internet Explorer, version 3.02 or higher. (To take advantage of all available help system features, Internet Explorer version 4.0 or higher is required.) Internet Explorer is not included as part of PMCS. You may obtain the latest version of Internet Explorer by downloading it from www.microsoft.com.

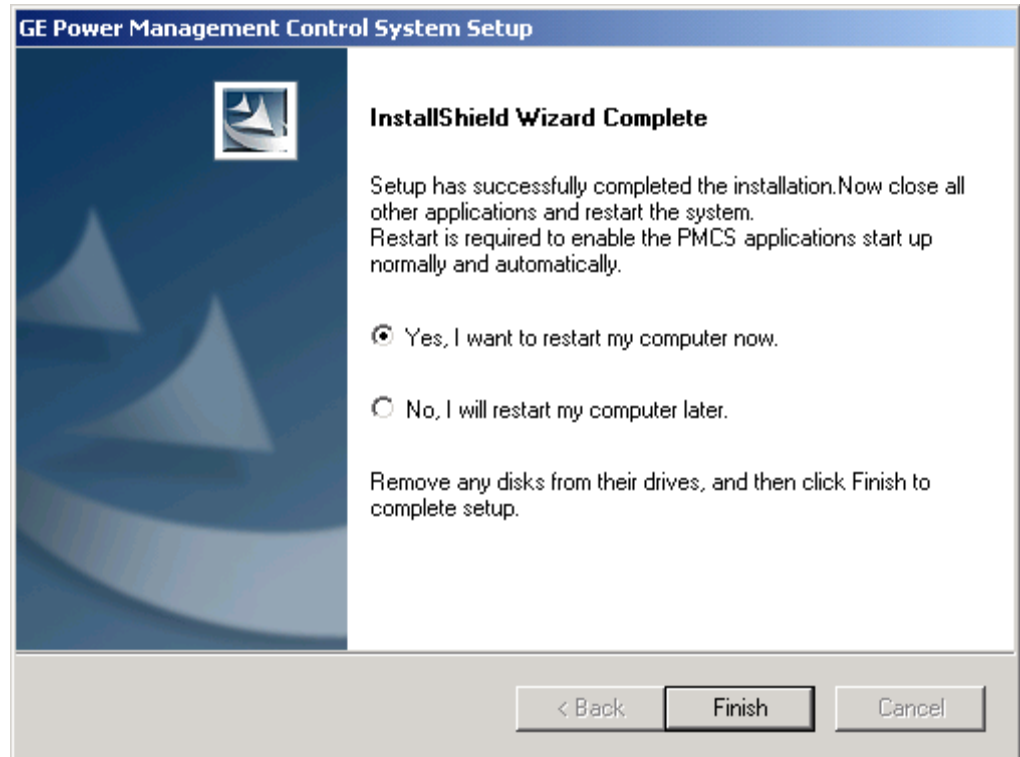
17. After completing the selected PMCS installation, the installation program checks the host PC for an older version of the POWER LEADER Modbus Monitor Proxy software. If the installer locates the Proxy software, it prompts you to update the Proxy to the PCMS 6.xx-compatible version before finishing the PMCS installation routine. (If your system does not use POWER LEADER Modbus Monitor devices or does not have the Monitor Proxy software installed, the PMCS installer will skip this step.)



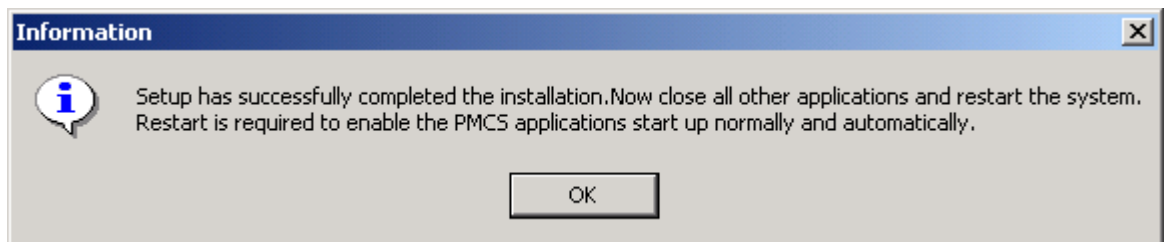
18. At this point, the installation program copies the appropriate files to your hard drive.
19. After the Setup program finishes installing the PMCS components you have selected, you will be prompted to install the Adobe Acrobat Reader software. If you do not have Acrobat Reader 5.0 or later installed on your PC, you may wish to install Acrobat Reader at this time. The PMCS CD-ROM includes a full complement of technical documentation in Acrobat PDF format which may be viewed with the Acrobat Reader program. The documentation is located in the TechDocs directory of the CD-ROM.



20. When all the installations are complete, the **Setup Complete** dialog box, shown below, prompts you to restart your computer.



If **No** is selected and clicked on finish it will prompt the below message box and will again redirect to the above dialog asking to restart. So select **Yes** to restart at this dialog.



After restarting your computer, be sure to view the ReadMe file to check any late-breaking information useful to the configuration or operation of your PMCS system.

NOTE: Your computer **MUST** be restarted after installing PMCS software. This step is **critical** to proper operation of the software, as it enables the following to happen:

- The operating system will register the new software components.
- The MMS Server (if installed) will update its alias table.
- Initial network configurations for EPM7700, EPM 7600 and EPM 7500 devices will be created.
- It will startup the main Application of the PMCS system which is EnerVista Status Tool which enables the use of all the other PMCS components.

After PMCS IIS – Setting up PMCS Server

For any PMCS remote viewer system to connect to the PMCS server, the prerequisite is to have IIS installed on the PC first then .Net Framework installed on the same PC and after that installation of PMCS. But if PMCS is installed before IIS is installed on any PC then please follow the steps mentioned in the below:

For Windows 2000 SP4 / Windows XP SP2 OS

1. Install PMCS with server licences
2. Install IIS
3. In the PMCS CD – there is dependencies folder .
 - 3a. **Double click** on the dependencies folder.
 - 3b. **Double click** on the **PMCS_FS_Web folder**
 - 3c. **Double click** on **PMCS_FS_WEB.bat** file
 - 3d. Double click on PMCS_FS_WEB.msi file.
 - 3e. It will prompt with the startup dialog click on **Next** will install the required components to make it to work for PMCS Remote Viewer Connectivity.
 - 3f. Installation successful window is popped. Click **Close** to complete the setup.

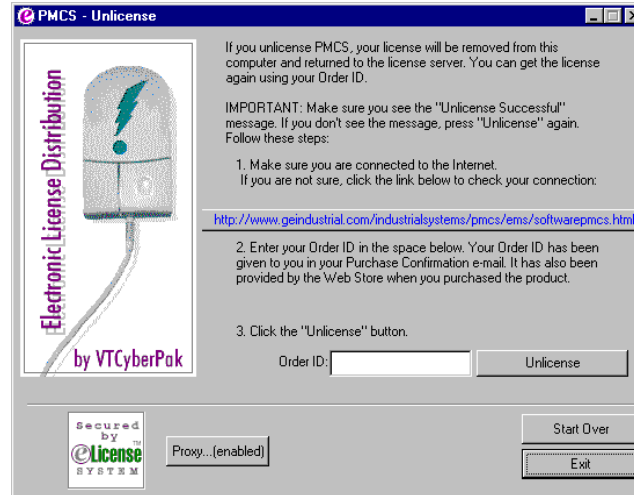
For Windows 2003 Server machine follow the below steps:

1. First Install PMCS
2. Install IIS
3. Follow the steps mentioned in “*Application Note 120 – Adding ASP.net component in W2K3 Server. PDF*” kept in PMCS installation CD\Tech_Doc\GE_CD\Application Notes. **This step can be executed either after PMCS is installed or before PMCS is installed but after IIS is installed.**
4. In the PMCS CD – there is dependencies folder.
 - 3a. **Double click** on the dependencies folder.
 - 3b. **Double click** on the **PMCS_FS_Web folder**
 - 3c. **Double click** on **PMCS_FS_WEB.bat** file
 - 3d. Double click on PMCS_FS_WEB.msi file.
 - 3e. It will prompt with the startup dialog click on **Next** will install the required components to make it to work for PMCS Remote Viewer Connectivity.
 - 3f. Installation successful window is popped. Click **Close** to complete the setup.

This will make the setup complete for setting up the PMCS server if IIS is installed after PMCS.

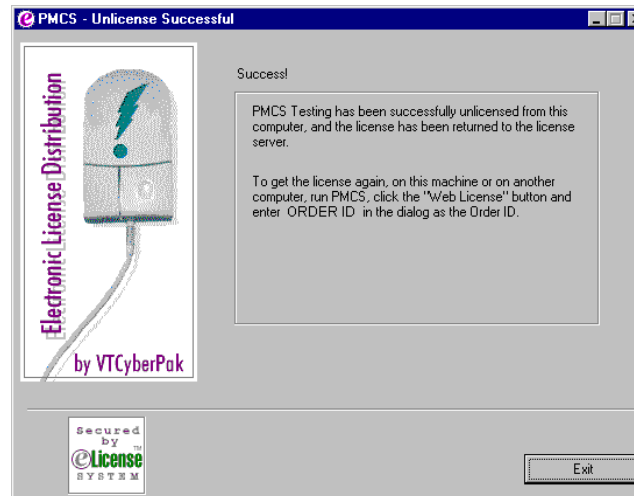
Un-licensing PMCS

In order to unlicense your software to use your eLicense Order ID for another computer – you must have an internet connection. To retrieve your license for use on another PMCS installation, simply right click on any PMCS executable on your desktop and select unlicense.



The screen will request the eLicense Order ID to be entered.

A screen will appear to indicate that you have successfully un-eLicensed and you may now take the eLicense Order ID for use on another PMCS installation.



Please note that you can not retrieve an eLicense for re-use through the unlicense process past 3 years of initial Licensing.

Uninstalling PMCS

All PMCS software is provided with an uninstall utility to fully remove PMCS components from your system. Uninstalling PMCS will permanently delete any configuration information.

NOTE: The Uninstaller may not delete some files such as error logs, system logs, and configuration records, which are created after the PMCS installation is complete. Since these files are not part of the initial installation, they will not be removed by the Uninstaller, and must be deleted manually.

If you are uninstalling EPM 7700 components, be aware that the Pegasys System Log Service does not properly unregister itself as an NT Service. The following procedure will allow you to manually uninstall this component: the remaining PMCS software can then be uninstalled in the usual manner.

Uninstalling the Pegasys System Log Service:

1. Open a Command Prompt window.
2. Make the C drive the current directory (assuming your Windows system files reside on the C drive).
3. Type “slservice -e” EXACTLY as shown and hit enter.
4. If the Pegasys System Log Service was installed and running you will receive the message “Pegasys System Log Service stopped”. If you do not receive this message, the Log Service was not installed on your system. Exit the command prompt and continue uninstalling PMCS.
5. If you received the correct message in step 4, uninstall the service. Type “slservice -u” EXACTLY as shown and hit enter. A message appears indicating “Pegasys System Log Service uninstalled”. Exit the command prompt and continue uninstalling PMCS.

Reinstallation Steps

Follow the procedure below to reinstall your PMCS software.

1. If your system includes the PMCS Interface Toolkit, uninstall the CIMPPLICITY Wizards from any third-party HMI tools.
2. Close any open applications.
3. Insert the **PMCS Version 6.15** CD into the CD-ROM drive.
4. From **Start** menu, select **Run** and enter X:\setup (where X is the appropriate CD-ROM drive designation).
5. Read the general information and disclaimers shown on the screen and click **Next**.
6. Enter your name, your company name, and the serial number located on the PMCS CD jewel case, then click **Next**. If you make an error in the serial number, the installation routine will prompt you for a correct PMCS serial number.
7. Choose the installation type; either **PMCS**, **PMCS with EPM 7700 Components**, or **Custom** installation. **PMCS** or **PMCS with EPM 7700 Components** installation will reinstall all components of the appropriate PMCS catalog number. Select **Custom** if you wish to reinstall only selected PMCS software components.

Upgrading from previous versions to PMCS 6.15

PMCS 6.15 provides an easy-to-use, automatic upgrade path from previous versions of PMCS. The software installer examines your hard drive and, if it locates any previous version of PMCS, it makes decisions on upgrading each component.

Follow the procedure below to upgrade your currently installed PMCS version (such as 5.0, 5.1, or 6.xx) to PMCS version 6.15. This procedure assumes you have an existing PMCS installation with configured ports, topics and (optionally) generic topics, and that CIMPLICITY Wizards are installed in the generic HMI application.

WARNING: *PMCS 5.1 and PMCS 5.1b Modbus DDE Server users only:* Upgrading from PMCS 5.1 to PMCS 6.15 may cause the Modbus version of the DDE Server to lose its port configuration. You may need to reconfigure your communications ports from the PMCS DDE Server after upgrading. The Ethernet version of the DDE Server is not affected.

PMCS 5.0 users: Port configuration is lost when a PMCS 5.0 configuration file is converted to a PMCS 5.1b configuration file. You will need to reconfigure your communications ports from the PMCS DDE Server. Refer to GEH-6510 for instructions. Also, any generic topics you may have configured at the PMCS DDE Server will be lost, and you will need to re-configure these generic topics.

Note: While upgrading the previous versions to PMCS 6.15, a message appears saying that EPM 7330 device is configured as a generic device and in PMCS 6.15 this device is a tightly integrated device. Ignore this message and proceed further.

1. Close any open applications, and insert the PMCS 6.15 CD into the CD-ROM drive.
2. From Start menu, select Run and enter X:\setup (where X is the appropriate CD-ROM drive designation).
3. Read the general information and disclaimers shown, then click Next.
4. Enter your name, your company name, and the serial number located on the PMCS CD jewel case, then click Next. If you make an error in the serial number, the installation routine prompts you for a correct PMCS serial number.
5. Choose either PMCS, PMCS with EPM 7700 Components or Custom installation. PMCS or PMCS with EPM 7700 Components installation will reinstall all components of the appropriate PMCS catalog number. Select Custom if you wish to reinstall only selected PMCS software components.
6. After upgrading, existing HMI applications that use PMCS wizards will continue to work. If you upgrade device firmware you will need to replace the old wizard screens with new screens to maintain compatibility between your application and the device. The old PMCS wizards will remain on your system unless you uninstall the previous version of PMCS. It is highly recommended that all new applications use PMCS 6.15 Advanced wizards exclusively.
7. After upgrading, launch the PMCS DDE Server. The Server will convert your previous PMCS configuration to a PMCS 6.15 configuration.

WARNING: *Event Logger users only:* Upgrading your EventServer or Eventlogger application will result in the loss of all device configurations and annunciator panel items. Make a list of these items so that they may be reconstructed in the new application.

Copy the existing PMCS EventLogger database files before starting the installation as they will be overwritten by the 6.15 installation. To view databases created with earlier editions of PMCS, use Microsoft Access to open the .mdb files.

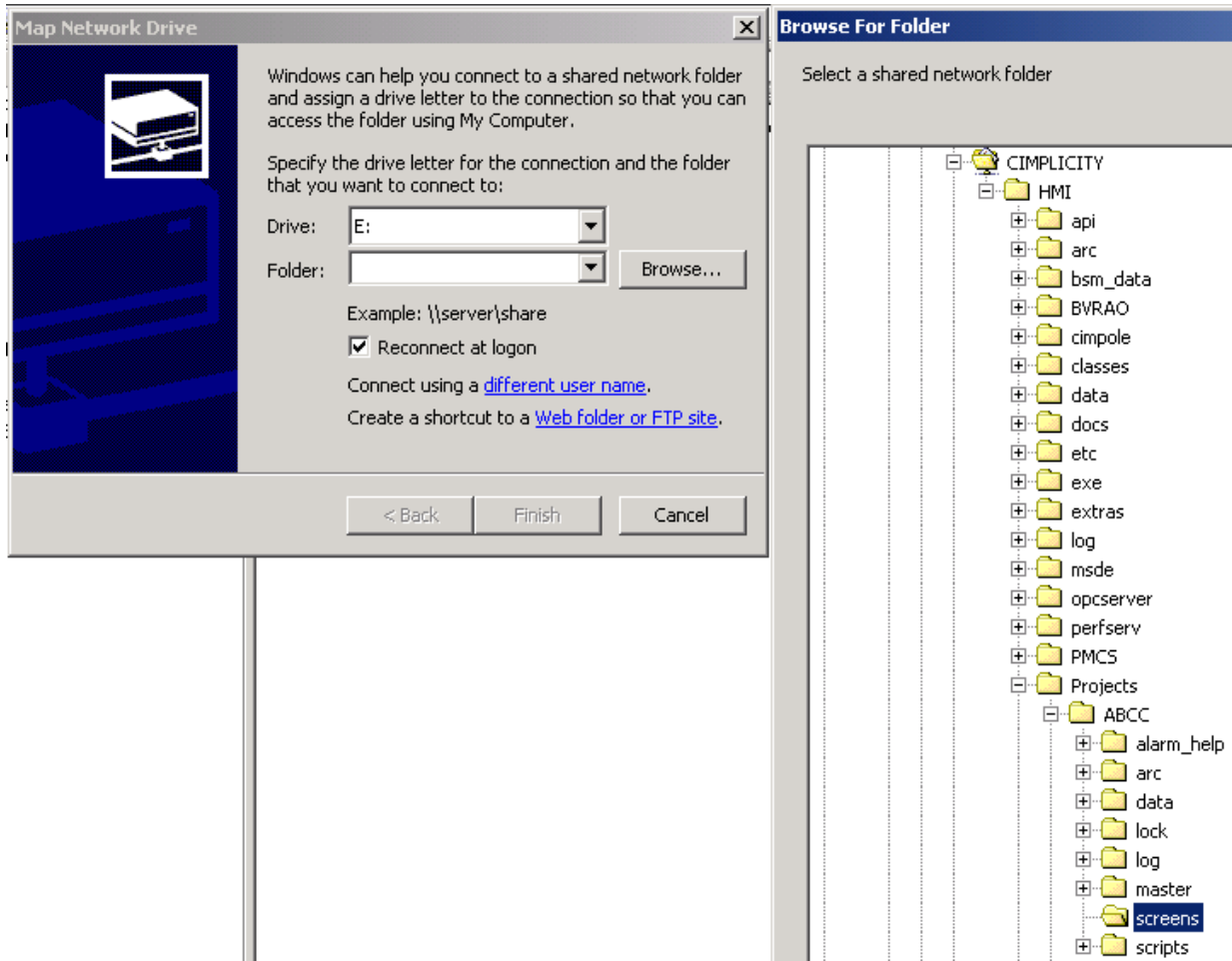
WARNING: *Generic Device users only:* On upgrading earlier versions of PMCS with PMCS 6.15, take the backup of Generic device by following this. Export the device registry groups information and device mnemonic information before starting the installation and import them back after PMCS 6.15 installation is completed.

Working with Cimplicity Viewer Node

How to view the screens on a viewer node

To configure the project on a Cimplicity viewer node, running on a HMI server, follow the directions below.

- 1) Install Cimplicity HMI 6.1 SP5 on one machine with HMI Server option on a Windows 2000 SP4 machine.
- 2) Install PMCS 6.15 on the same machine with the serial numbers given.
- 3) Install Cimplicity HMI 6.1 SP5 on another machine with Viewer Runtime option on a Windows 2000 SP4 machine.
- 4) Install PMCS 6.15 on the same machine with the serial numbers given for a viewer node, which installs Runtime wizards and WC and EV only.
- 5) Now create a project in HMI Server node, with Enable project Broadcast option. Drop the wizards which contains LFP and also tab selection mode wizards.
- 6) On the viewer node now map the drive (preferably Cimplicity Directory) of HMI server node.
- 7) **Important Note:** On the viewer node neither you copy the project nor screens.
- 8) Now after mapping the drive, open the MainMenu.cim file, which is on HMI server node from the Viewer node. Or On the viewer node, Go to Start\Programs\Cimplicity\HMI\Cimview-> Common dialog box appears, select\point the Mainmenu.cim file (obviously on the HMI server node's file). See the following figure.
- 9) Open the small faceplate wizard files to get the configured screens.



Configuring the Software

To get the most out of your new PMCS system, follow the directions below to configure your system.

Organize Your Information

Host PC

You need the following information to properly configure the PMCS software for the Host PC. This information is used throughout the configuration process and you should archive it for any future maintenance of your system.

For RS485 PMCS network interfaces, you need to list all devices in the power-management network (including Modbus Concentrators) with associated device types, Modbus RTU addresses, and COM ports. Assign names of less than 20 characters (no spaces) to these devices.

For example, in a simple system with four devices (and one Modbus Concentrator), you may have a table similar to the following:

COM port	Modbus RTU Address	Device Type	Device (Topic) Name
1	2	MODCONC	MCI
1	12	E3720	Main_Meter
1	33	PLEPM	Mfg_Meter
1	61	MVT	Mfg_Breaker
2	210	ML269	Mill_Relay

For an Ethernet PMCS network interface (Ethernet Gateway), you must list all devices in the power-management network, including the device types and Modbus RTU addresses. You need to know the appropriate Ethernet Gateway IP address and COM port (1–4) to which each device is connected. Assign names of less than 20 characters (no spaces) to these devices.

For example, in a simple system with 10 devices, you may have a table similar to the following (this system uses one Ethernet Gateway and other devices).

Ethernet Gateway IP Address	COM port	Modbus RTU Address	Device Type	Device (Topic) Name
10.47.28.201	1	2	EPM 9650Q	E9650Q
10.47.28.201	1	12	E3720	Main_Meter
10.47.28.201	1	33	PLEPM	Mfg_Meter
10.47.28.201	1	61	PLEPM	Plating_Meter
10.47.28.201	2	12	UR L90	UR
10.47.28.201	2	66	PLEPM	Office1_Meter
10.47.28.201	2	80	PLM	Office2_Meter
10.47.28.201	2	90	MDP	Feeder1_Relay
10.47.28.201	2	100	MVT	Mfg_Breaker
10.47.28.201	3	200	ML269	Mill_Relay
10.47.28.201	4	21	EPM5350P	E5350P
10.47.28.201	4	201	MVT	Plating_Breaker
10.47.28.201	4	210	MVT	Office_Breaker

View Node

You should configure View Nodes after you have configured and tested the Host PC to ensure all functions are operating. View Nodes require a copy of the network architecture list used above. Refer to GEH-6510, *Network and Device Configurator*, for complete configuration instructions.

Configuration Procedure

Follow the procedure below to efficiently configure your system and minimize your time to startup.

Host PC Configuration

1. *Configure the DDE Server.* Your Host PC will likely have several versions of the DDE Server installed (RS485-Modbus, TCP/IP Modbus, TCP/IP Encapsulated Modbus and Ethernet-TCP/IP). Configure only the server appropriate for your PMCS network interface (GE32MODB, GE32MTCB, GE32GTWY or GE32ENET). See GEH-6510, *Network and Device Configurator*, for complete details.
2. **EPM 7700, EPM 7600 and EPM 7500 users only (all others proceed to step 3):** *Configure the Communications Server and GE 7700 Gateway Server.* If you installed the EPM software options and you are going to use EPM 7700, EPM 7600 or EPM 7500 devices in your PMCS network, you will need to configure both the Communications Server and the GE 7700 Gateway Server. For Comm Server configuration instructions, refer to *EPM Software Components Configuration* later in this guide. For GE 7700 Gateway Server configuration instructions, refer to DEH-40035, the *GE 7700 Gateway Server User's Guide*.
3. *Configure the user interface.* If your system was provided with a generic HMI software application, either load or create the custom HMI (using the Interface Toolkit wizards, if appropriate; see DEH-210, *CIMPLICITY PMCS Interface Toolkit* or refer to the HMI software's documentation.
4. *Configure the applications.* As appropriate, configure the following application modules, referring to the instruction manuals provided.
 - *Event Logger*, GEH-6512
 - *Waveform Capture*, GEH-6511
5. *Test the applications.* Test the functioning of all applications to ensure proper Host PC operation. Do not proceed to step 5 until you are sure the Host PC operates as expected.
6. *Set up NetDDE.* If your system has one or more View Nodes, set up NetDDE shares and trusts in the Host PC, following the procedures in GEH-6510, *Network & Device Configurator* and the CIMPLICITY HMI documentation.
7. *Set up NetDDE.* If your system uses the PMCS Waveform Capture client, and you intend to access waveform data from View Nodes, set up NetDDE shares and trusts for the PMCS Waveform Server following the procedures in GEH-6511, *PMCS Waveform Capture Module*.

Viewer Workstation Configuration

1. *Configure the user interface.* Load the custom HMI. Refer to the CIMPLICITY HMI documentation as appropriate.
2. *Configure the applications.* As appropriate, configure the application modules, referring to the instruction manuals provided. See step 3 of the Host PC Configuration for the appropriate instruction manual numbers.

EPM Software Components Configuration

The EPM 7700, EPM 7600 and EPM 7500 requires several separate software components which are installed during the PMCS setup. This section provides a brief overview of the steps required to configure these components; the following section describes the EPM software components in greater detail.

For details of using the NetBuilder software, refer to the *Configuring the EPM 7700 Device Network* section of this manual, and to DEH-440035, the *GE 7700 Gateway User's Guide*.

1. *Launch the NetBuilder application.* From the Start menu, select Programs>Power Management Ltd>Utilities>Network Builder.
2. *Insert a workstation(s).* Normally all the workstations in a PMCS network are automatically configured during the installation of the software – these instructions are provided in case you need to enter the information manually. Select the Items menu from NetBuilder, and choose Workstation to insert a workstation. Name the workstation (up to 15 alphanumeric characters, the first character must be alphabetic), and choose OK. Repeat this step for each workstation (computer) in your network.
3. *Insert Ethernet Sites.* Select Items>Insert>Ethernet Site to insert an Ethernet site. Set the proper time synchronization options, then choose OK. Repeat this step to add additional sites to the workstation if necessary.
4. *Insert devices to the site.* Select Items>Insert>Device, and complete the dialog box with the proper device type, Group, Ethernet address and name for an Ethernet device (EPM 7700, EPM 7600 or EPM 7500). The device name may be no more than eight alphanumeric characters, and the first character must be alphabetic. The IP service port field must be "7700" for any device connected to the Ethernet, and "7800" for any additional device connected through an EPM 7700's RS485 port. Choose OK to close the Insert Device dialog box. Repeat this step as necessary to add additional devices to the site.
5. *Save and exit.* When all workstations, sites, and devices have been added, select the save icon and then exit.

(This page left blank intentionally)

EPM Device- Special Considerations

Introduction

The GE EPM 7700, EPM 7600 and EPM 7500 devices add new level of power management capabilities to PMCS. These EPM devices also require some special configuration which is not necessary for other PMCS-compatible devices. This section describes the additional requirements and configuration steps necessary to use the EPM 7700, EPM 7600 and EPM 7500 in conjunction with PMCS.

NOTE: If you are not using the EPM 7700, EPM 7600 or EPM 7500 meters in your PMCS network, it is not necessary to read this section of the manual.

Although the EPM 7700, EPM 7600 and EPM 7500 meters are compatible with PMCS and its client applications (Waveform Capture, custom wizards, etc.), and EPM 7700, EPM 7600 and EPM 7500 meters may co-exist on the same Ethernet as other PMCS network segments, the EPM 7700, EPM 7600 and EPM 7500 use a slightly different metaphor than a straight PMCS network. An EPM device power-monitoring network is comprised of a number of *nodes* that are connected to the PMCS workstation through Ethernet links. Nodes in the power-monitoring network are IEDs such as the EPM 7700 meter (power meters are also referred to 'meters' or 'devices'). IEDs may be distributed across one or more networks as required to service the particular application.

EPM Software Components

There are four major components of the EPM software. The Network Builder, ION Designer, Communications Server, and ION_LINK DDE Server each interact to support the EPM 7700, EPM 7600 and EPM 7500 Meters. When you selected the “PMCS with EPM 7700 Components” selection during the PMCS installation routine, these software components were installed automatically. The four components and their functions are described below.

Network Builder: Building the Network Configuration File

The **Network Builder** presents a graphical view of the EPM 7700, EPM 7600 and EPM 7500 devices in your network, allowing you to easily add, remove or configure sites, services and meters. Network Builder creates a central network configuration file that holds information for the workstation, the network connections, and every connected device. You may want to restrict access to Network Builder or the network configuration file, since if the file is tampered with, EPM 7700, EPM 7600 and EPM 7500 components may be rendered inoperable.

ION Designer: Programming Devices and Software Nodes

The **ION Designer** component allows you to customize the operation of an ION-compliant node, such as 7000-series meters and 3000-series meters. Be aware that misuse of ION Designer can adversely affect the operation of your meters.

IMPORTANT: For purposes of PMCS network compatibility, it is CRITICAL that any EPM 7700, EPM 7600 and EPM 7500 meters be configured with the GE PMCS standard configuration. Using ION Designer to customize EPM 7700, EPM 7600 or EPM 7500 functionality can compromise compatibility with the PMCS client applications attempting to access the device.

Communications Server: System Communications

The **Communications Server** is the core communications component for EPM 7700, EPM 7600 and EPM 7500 meters. The Communications Server manages all communications between the meters connected to your network and the GE77GTWY and ION_Link DDE Server software applications.

ION_LINK DDE Server: Communication with Windows Applications

The **ION_LINK DDE Server** uses Dynamic Data Exchange to share information with applications such as Microsoft Excel or the CIMPLICITY Wizards.

Workstation Configuration Guidelines

If you are using the EPM 7700, EPM 7600 or EPM 7500 Meters in your PMCS network, the following guidelines in this section must be adhered to before continuing with the EPM configuration.

NOTE: If you are adding a PMCS installation to an existing network, please refer your network administrator to GEH-6502, the *PMCS Network Architecture Guide*, for integration details.

- Each computer in the network must be assigned a Windows 2000 SP4 computer name. The name must be one to fifteen alphanumeric characters in length. Spaces may not be used, and the first character of the computer name may not be numeric.
- The System Control Panel should have the Performance Boost for Foreground Application value set to None, and a paging file should be created on the C: drive with the Initial and Maximum sizes set to twice the workstation's installed RAM.
- The Network Control Panel's Adapter tab should have the MS Loopback adapter installed if a physical network adapter is not installed in the workstation. Under the Protocols tab, TCP/IP or NetBEUI should be installed; if TCP/IP is installed, use IP address 192.168.100.xxx and subnet mask 255.255.255.0 unless your network administrator has assigned you an IP address. Under the Services tab, install Remote Access Server (RAS) and configure it by enabling NetBEUI (if using NetBEUI or, if TCP/IP is used, assign two or more IP addresses, starting at xxx.xxx.xxx.254 and working down. Set RAS to start automatically and set access to "entire network" (if available).

Configuring the EPM Device Network

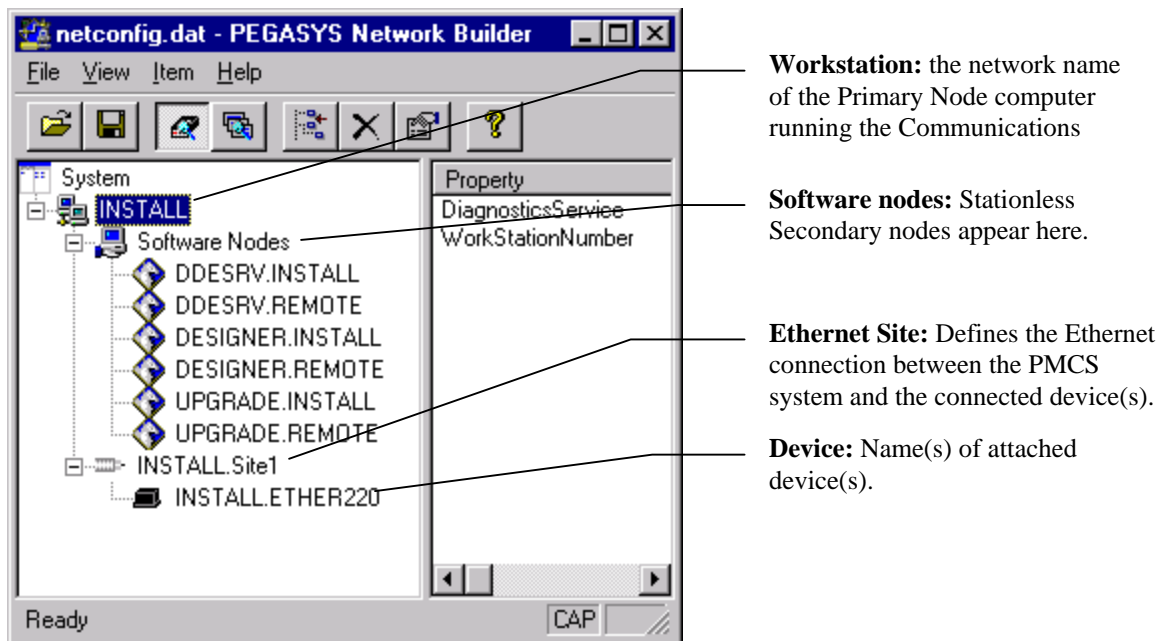
The PMCS installation routine described earlier in this manual creates initial workstation and software node entries in the EPM 7700 network configuration file. After EPM 7700 software components are installed, the next step is to add Ethernet sites and devices to the PMCS power-monitoring network using Network Builder software.

Running Network Builder

Network Builder software presents your EPM power-monitoring network graphically, showing the installed components in a hierarchical tree. Network Builder allows you to edit the Network Configuration file—the file that identifies every node in the EPM power-monitoring network.

The first step is to run Network Builder from the Start Menu: (Programs > Power Measurement Ltd > Utilities > Network Builder.)

The following figure shows how Network Builder displays a system comprised of the basic EPM software components, a single EPM 7700 meter, a Primary Node and a Stationless Secondary node (also called a 'view node').



Building the Power-Monitoring Network in NetBuilder

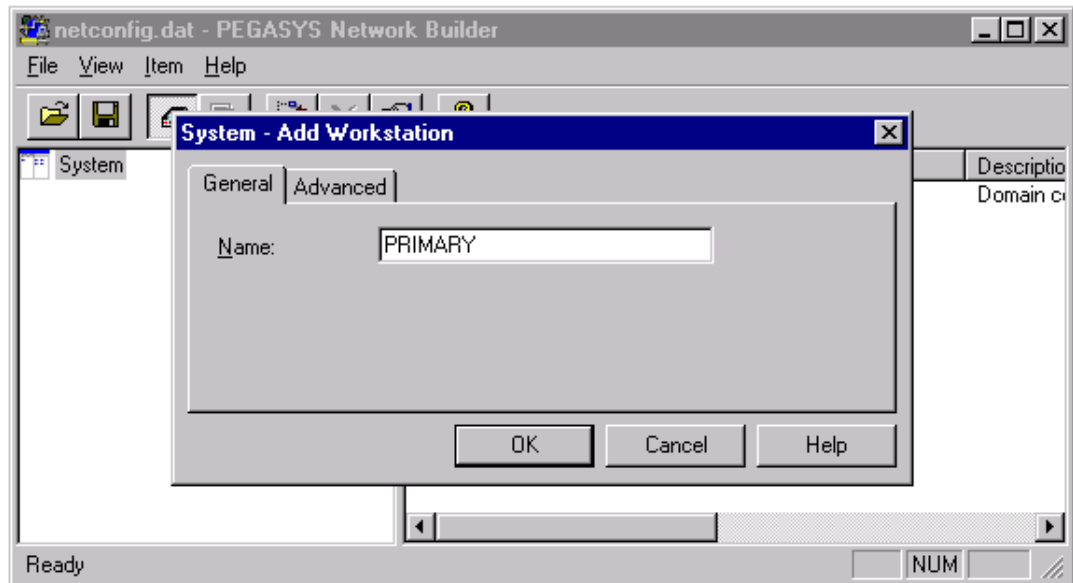
When Network Builder is running, you can begin configuring your EPM system by adding a site to the workstation, then adding devices to the site. For larger systems multiple sites are added; one for each network of devices monitored.

NOTE: The PMCS installation wizard creates initial entries for the workstation and software nodes. If you do not need to make changes to the information provided during installation, skip this section and begin with the section title "Adding an Ethernet Site".

Adding a Workstation

When you use the PMCS installation wizard to install a Primary node or Full Station Secondary node, it creates a Workstation in the Network Configuration for you. Stationless Secondary nodes do not appear in the network configuration as workstations, but as software nodes under the Primary workstation. See the section on software nodes for more information.

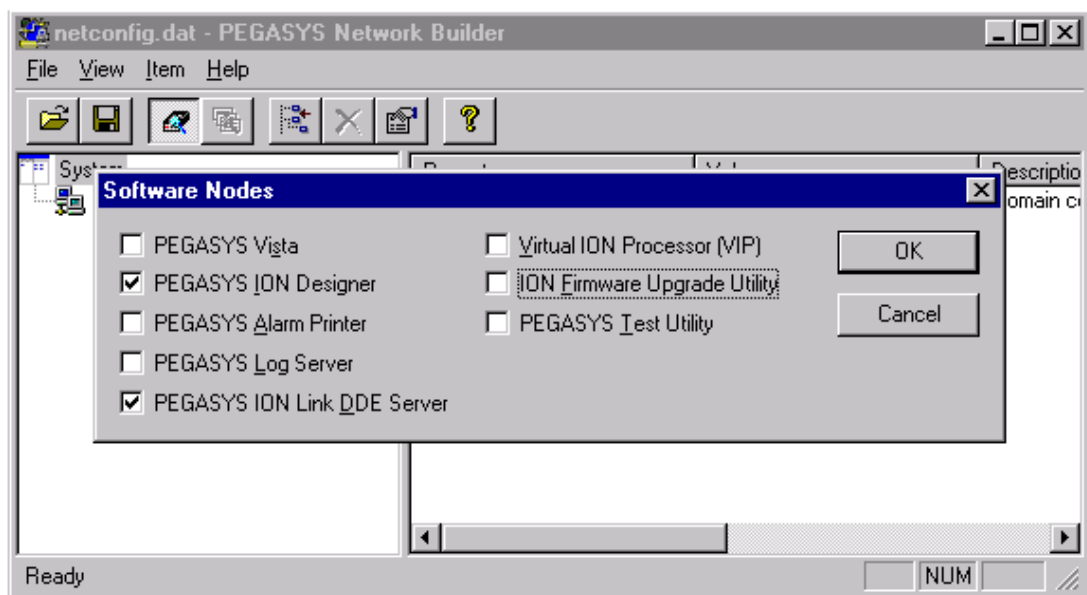
To add a new workstation, right click "System" and choose "Insert Workstation" from the pop-up menu. The "System – Add Workstation" dialog box appears as shown below. Type the network name of the computer in the "Name" field. (Use the default settings on the "Advanced" tab.) Click "OK", then proceed to "Adding Software Nodes" below.



Adding Software Nodes

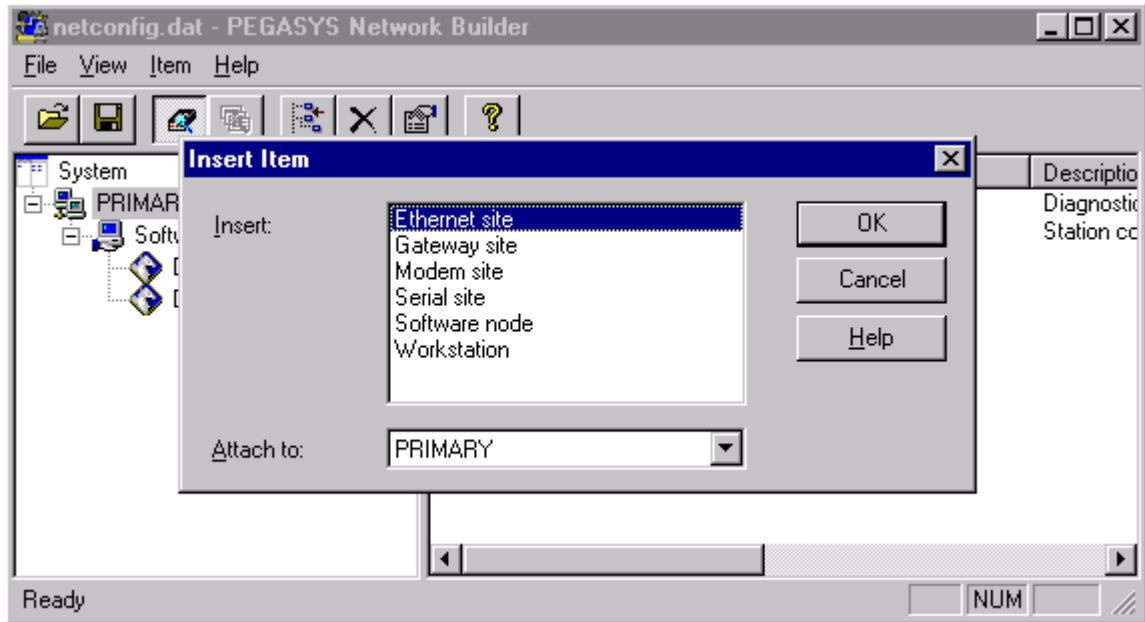
Software nodes identify the various software components in the network. Stationless Secondary nodes, although they are physically separate computers, do not run a Communications Server and are therefore not considered Workstations by Network Builder. Instead, Stationless Secondary nodes appear in the network diagram as software nodes under the Primary Workstation. Full Station Secondary nodes appear as Workstations because they do run an instance of the Communications Server.

Acknowledging the Add Workstation dialog brings up a message box asking if you want to set up the default software nodes – choose Yes to display the software nodes dialog (shown below). Select *only* ION Designer and Pegasys ION_Link DDE Server as shown, then click OK to proceed. The other options are not supported in PMCS 6.15.

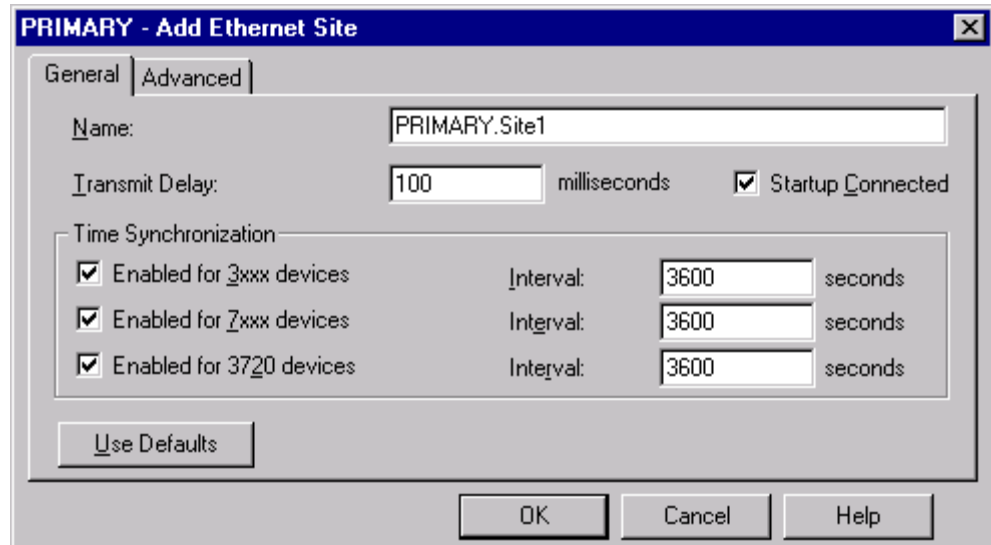


Adding an Ethernet Site

An Ethernet site defines the network connection between the devices and the Workstation(s). You add Ethernet sites to Workstations, then add devices to the sites. To add a new Ethernet site, right-click a Workstation name and choose “Insert: Ethernet site” from the pop-up menu – attach it to the current Workstation. Click OK to continue.



An Add Ethernet Site dialog box (shown below) appears.



Set the following communications parameters for the site.

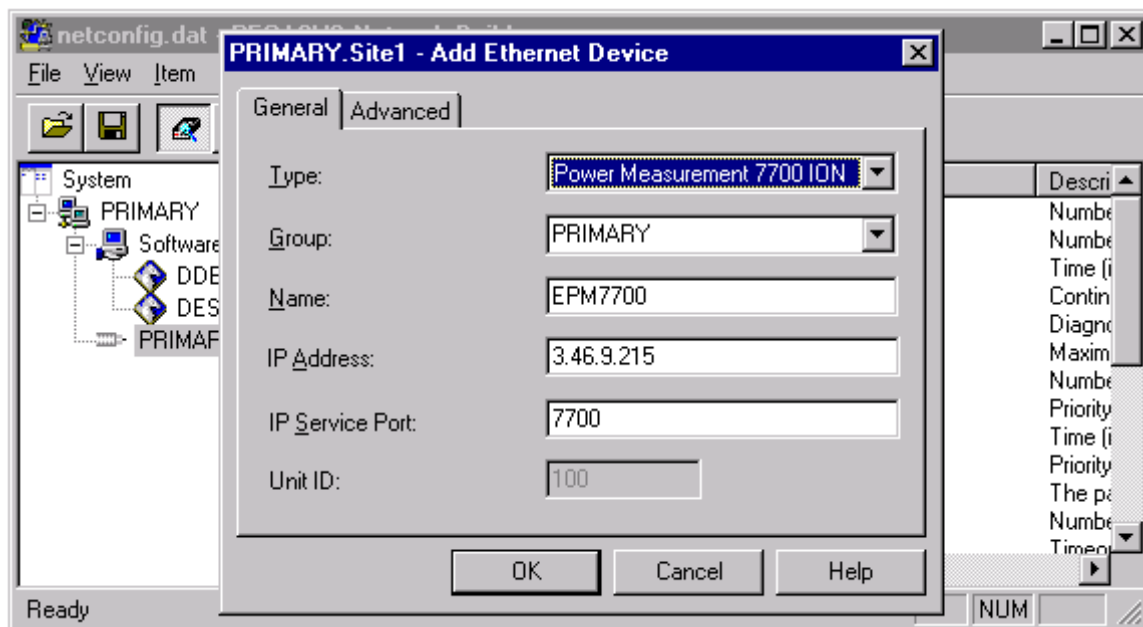
- Enter the Transmit delay setting (in milliseconds). This setting determines the level of traffic on the network. If the PMCS system is the sole user of the network, set this value to 5 (or less) to maximize performance. Increase the transmit delay in situations where the network is shared with other users, such as on a corporate LAN. Refer to the PMCS Network Architecture Guide for guidelines on setting this parameter for best system performance.
- Change the RX timeout delay from 10000 to 30000 on the Advanced tab. (See the following figure for Advanced tab.)

All other parameters may be left at their default values for most applications. When you click OK in the Add Site dialog box, Network Builder will inform you if there is additional information you must enter.

The screenshot shows the 'PRIMARY - Add Ethernet Site' dialog box with the 'Advanced' tab selected. The 'Receive Timeout' field is highlighted in blue and contains the value '30000'. Other fields include 'Site Station Number' (2), 'Pad Byte' (0), 'Pad Number' (2), 'Online Priority' (0), 'Offline Priority' (128), 'Connect Attempts' (INFINITE), 'Continuous Attempts' (checked), 'Use Acknaks' (checked), 'Offline Timeout Period' (30 seconds), 'Max Attempts Multiple' (3), 'Attempt Increment' (3), 'Offling Attempt Number' (1), and 'Connect Timeout' (60 seconds). The 'Diagnostics Service' field contains 'PRIMARY.Site1'. Buttons for 'Use Defaults', 'OK', 'Cancel', and 'Help' are visible at the bottom.

Adding Devices (Meters)

To add a meter, right-click on the Ethernet site you want to add the meter to, and select Insert Device... from the pop-up menu. The Add Ethernet Device dialog box appears (shown below).



Enter the following information:

- Choose the meter type from the Type list (Power Measurement 7700 ION).
- Type a name in the Group box, or choose a Group from the list (by default the Group will be the name of the workstation).
- Enter a name for the meter (or accept the default). The meter name must begin with a letter.
- Enter the IP address for the meter.
- Enter the IP Service Port number (socket) for the meter. For a 7700, 7600 and 7500 ION this number is 7700, for a 3720 ACM, 3721.

Saving and Exiting

Once you have added all of your sites and devices to the network tree, click the Save button (or choose Save from the File menu), and exit Network Builder. You have now configured your EPM 7700, EPM 7600 and EPM 7500 meters to operate with the PMCS, and you should be able to access EPM 7700, EPM 7600 and EPM 7700 metering data from PMCS client applications.

(This page left blank intentionally)

Index

- A**
alarm, 4
- D**
DDE Server, 54
- E**
Ethernet, 4, 8, 18, 19, 48, 50
event, 4
- F**
Fanuc, 4
First Steps, 7
- I**
Interface Toolkit, 5, 8, 43, 50
- M**
minimum system requirements, 3
Modbus Monitor Proxy, 39
Modbus RTU, 4, 8, 48
- N**
NetBuilder, 51
Network Builder, 51
- O**
option modules, 4
- P**
PEGASYS
nodes, 53
Performance, 4
- S**
servers
DDE, 54
- T**
TCP/IP, 4, 8, 9, 18, 50
Technical Support, 3, 7, 12
Terminology, 7
- W**
waveform capture, 4
Windows NT, 9, 18, 21



GE MULTILIN

General Electric Company
215 Anderson Avenue, Markham ON, L6E 1B3,
CANADA USA & Canada: 1-800-547-8629 Global: (905) 294-6222 Fax: (905) 201-2098
Email: multilin.tech@indsys.ge.com <<mailto:multilin.tech@indsys.ge.com>>

DEH-211 R12 03/02

© 2000 – 2006 General Electric Company

Free Manuals Download Website

<http://myh66.com>

<http://usermanuals.us>

<http://www.somanuals.com>

<http://www.4manuals.cc>

<http://www.manual-lib.com>

<http://www.404manual.com>

<http://www.luxmanual.com>

<http://aubethermostatmanual.com>

Golf course search by state

<http://golfingnear.com>

Email search by domain

<http://emailbydomain.com>

Auto manuals search

<http://auto.somanuals.com>

TV manuals search

<http://tv.somanuals.com>