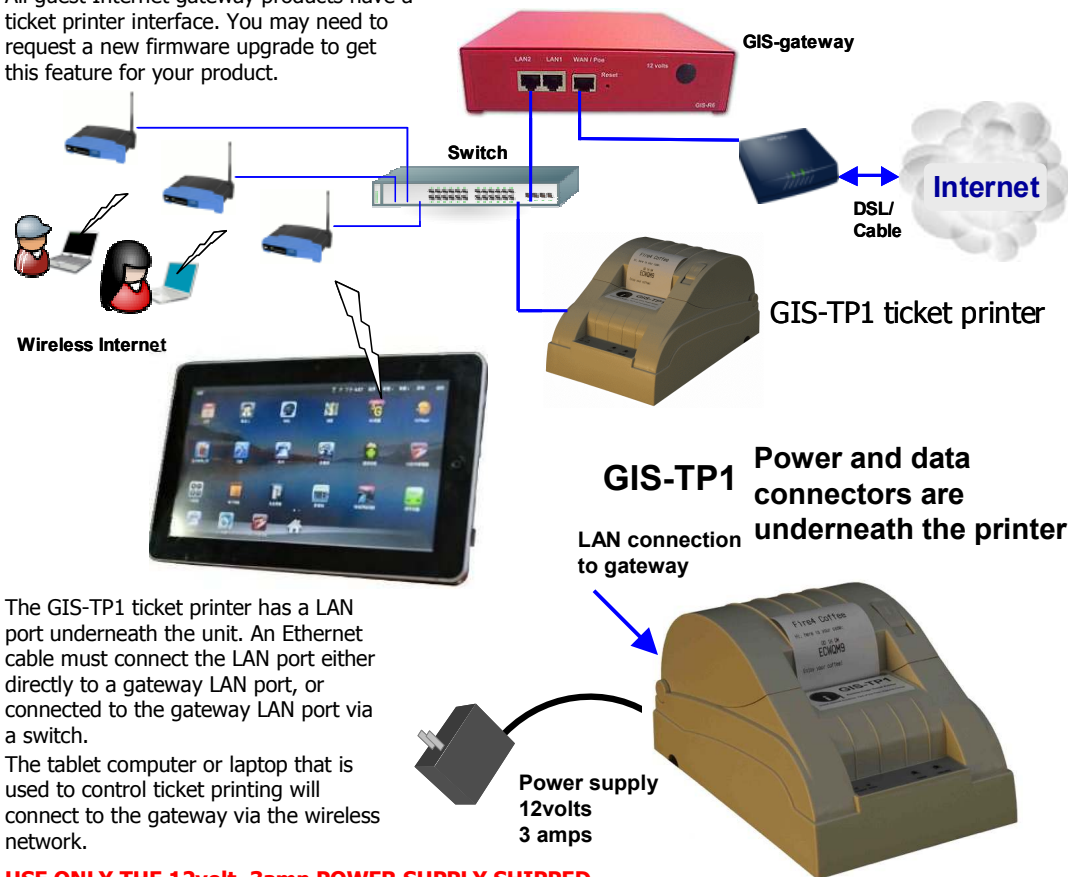


The Guest Internet GIS-TP1 is an access code ticket printer that prints pre-programmed tickets on demand. A tablet computer or laptop is required to initiate ticket printing, by touching buttons on the screen, exactly like a point of sale terminal. The buttons are preset using the ticket printer administration page on the gateway.

All guest Internet gateway products have a ticket printer interface. You may need to request a new firmware upgrade to get this feature for your product.



The GIS-TP1 ticket printer has a LAN port underneath the unit. An Ethernet cable must connect the LAN port either directly to a gateway LAN port, or connected to the gateway LAN port via a switch.

The tablet computer or laptop that is used to control ticket printing will connect to the gateway via the wireless network.

USE ONLY THE 12volt, 3amp POWER SUPPLY SHIPPED WITH THE GIS-TP1 UNIT TO PREVENT DAMAGE

LOGIN AS ADMIN: Connect your computer to a LAN port via an Ethernet cable. Open your browser and type in the URL to login to the Admin pages of your gateway: <http://aplogin.com/admin>

The username is **admin**, and the password is the one that you entered with the wizard. When the page opens select the advanced settings > printer menu page. See the manual for more information

GIS-TP1

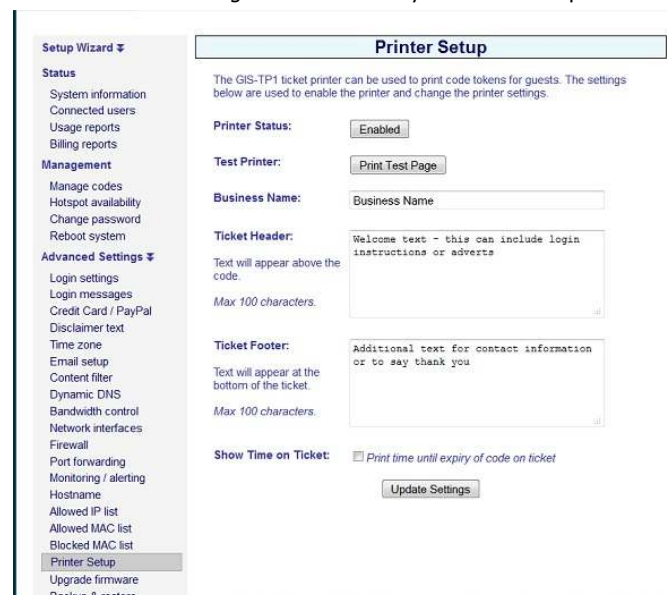
Printer Configuration

Connect your GIS-TP1 ticket printer to the gateway via a LAN port as shown in the diagram. A switch will be necessary to connect wireless access points and the printer. Connect your laptop computer to one of the LAN ports of the gateway.

Open your computer browser and login as ADMIN (see below). First you must create a CODES login password as this is the login used by the print control computer (a tablet or laptop).



Next go to advanced settings > printer setup, in the ADMIN menu. Ensure that printer status is enabled and then fill in the three fields of data that will be printed together with the code. Check the box to print expiry time if required. Click the update settings button. Return to the printer setup page and click the Print Test Page button and verify that a ticket is printed.



Step 1: Login with your Tablet or Laptop



Access code ticket printing requires a tablet or laptop computer to select and print the required ticket using buttons on the display. A tablet will permit touch button printing. This type of input is exactly like a point of sale terminal screen.

Connect your tablet wirelessly to the gateway and then open a browser. Type the login:

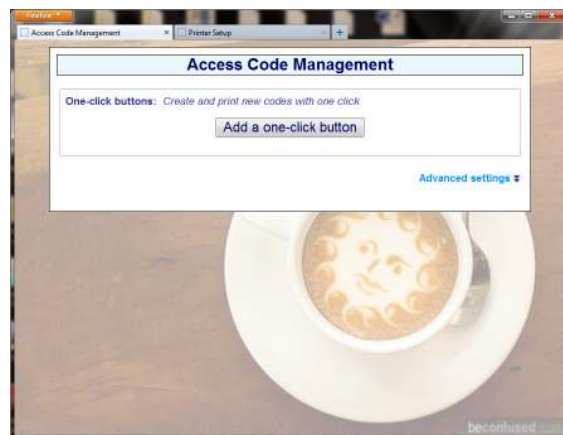
<http://aplogin.com/codes>

A box will open for the username (codes) and the password that you entered previously.

The login page picture will be shown as a background to the one-click buttons printer control page.

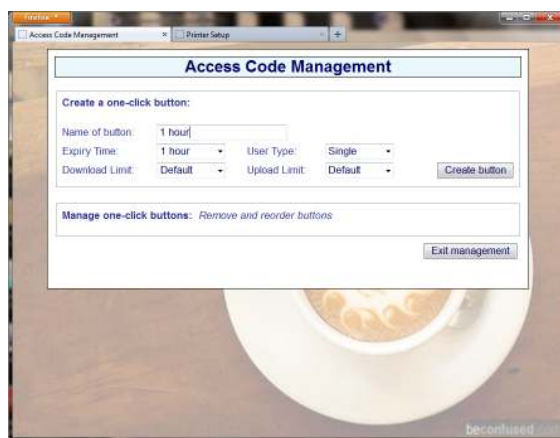
Step 2: add a one-click button

The one-click button is displayed on the screen and is used to print an access code ticket. Click 'add a one-click button' to proceed



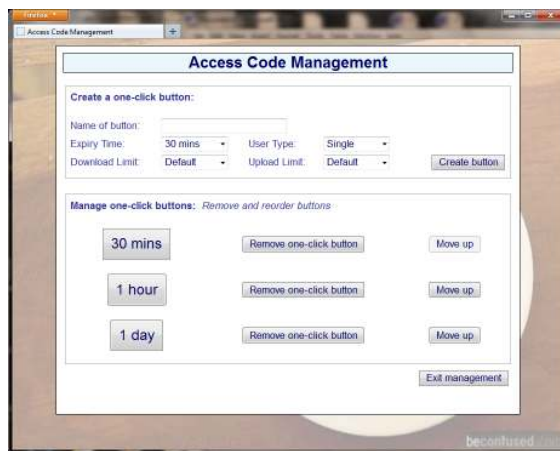
Step 3: configure the one-click button

Type the button name which will appear in the button, then select the access code characteristics that will be used to generate the access code. Finally click 'create button'.



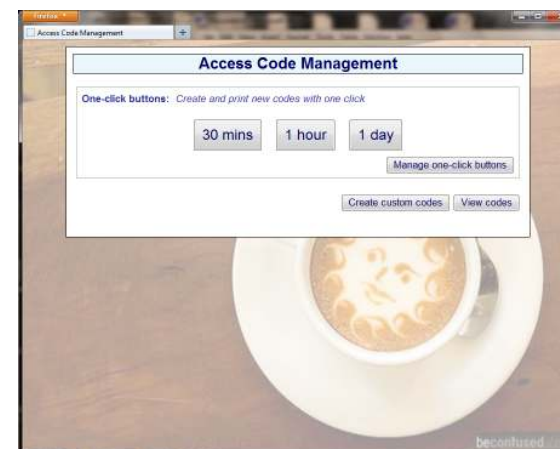
Step 4: add more buttons or delete buttons

After adding a button, more buttons can be added. Buttons can also be deleted. When all buttons have been generated click the 'exit management' button.



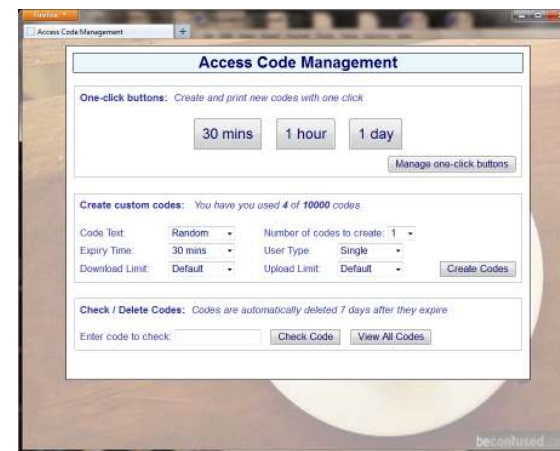
Step 5: start printing tickets

The display with buttons is used to initiate printing of access code tickets. Using a tablet computer, touch the button to print the ticket. With a laptop click the mouse.



Step 6, manage one-click buttons

Click 'manage one-code buttons' to make any changes to the buttons. Click 'create custom codes' and 'view codes' for additional features.



Free Manuals Download Website

<http://myh66.com>

<http://usermanuals.us>

<http://www.somanuals.com>

<http://www.4manuals.cc>

<http://www.manual-lib.com>

<http://www.404manual.com>

<http://www.luxmanual.com>

<http://aubethermostatmanual.com>

Golf course search by state

<http://golfingnear.com>

Email search by domain

<http://emailbydomain.com>

Auto manuals search

<http://auto.somanuals.com>

TV manuals search

<http://tv.somanuals.com>