

THE G.E. AK-2A-50 RETROFIT KIT WILL FIT THE AK-1-50-9 (FRAMELESS) BREAKER WITH THE ADDITION OF SUPPLEMENTAL PARTS STYLE NO. 8258A11G01. FOLLOW THE AK-2A-50 INSTRUCTION BOOK IL 33-856-2 WITH THE FOLLOWING EXCEPTIONS.

SUPPLEMENTAL PARTS 8258A11G01 CONTAIN:

TRIP UNIT MOUNTING BRACKET	QUANTITY 1
SUPPORT CLIP	QUANTITY 1
PT MODULE WARNING NAMEPLATE	QUANTITY 1
.250-20 X 1.0 HEX BOLT	QUANTITY 3
.250 WASHER STD STL	QUANTITY 6
.250 LOCKWASHER STD STL	QUANTITY 3
.250-20 HEX NUT	QUANTITY 3

STEP 3A (PAGE 1): INSTALL THE SENSOR MOUNTING ANGLE ON THE TOP REAR OF THE BREAKER WITH THE HARDWARE PROVIDED AS SHOWN. EXCEPTION: USE THE ROUND HOLES IN THE MOUNTING ANGLE INSTEAD OF THE SLOTS.

STEP 4B (PAGE 2): ON "DRILLING PLAN A", THE 4.00 INCH DIMENSION LOCATING THE THREE .312 DIA HOLES UP FROM THE BOTTOM OF THE BREAKER SHOULD BE 1.25.

STEP 7A (PAGE 4): DO NOT USE "DRILLING PLAN B" OR STEP 7A FROM THE BOOK.
7A. LOCATE AND DRILL TWO .312 DIA HOLES IN THE TOP FLANGE OF THE BOTTOM RIGHT BREAKER CHANNEL. SEE DRILLING PLAN "B" BELOW.
7B. MOUNT THE TRIP UNIT MOUNTING BRACKET ON TOP OF THE BREAKER CHANNEL WITH THE HARDWARE PROVIDED.

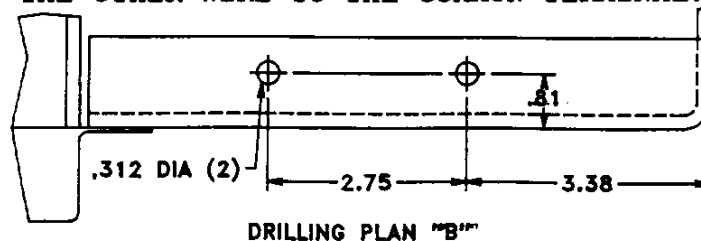
STEP 8B (PAGE 4): EXCEPTION: THE MICROSWITCH MUST BE ASSEMBLED TO THE MOUNTING WITH THE ACTUATOR ON TOP NEAREST THE LARGE HOLE AND FACING THE SAME DIRECTION. (IT IS SHOWN IN THE PICTURE WITH THE ACTUATOR ON THE BOTTOM.)

STEP 8C (PAGE 5): DO NOT USE STEP 8C FROM THE BOOK.
REMOVE THE WARNING NAMEPLATE FROM THE PT MODULE AND REPLACE IT WITH THE WARNING NAMEPLATE PROVIDED WITH THE SUPPLEMENTAL PARTS KIT.

STEP 8G (PAGE 5): DO NOT USE STEP 8G FROM THE BOOK.
8G. MOUNT THE TRIP UNIT ASSEMBLY TO THE MOUNTING BRACKET USING THE HARDWARE PROVIDED IN THE TOP AND BOTTOM HOLES. MOUNT THE SUPPORT CLIP TO THE BREAKER USING THE TOP RIGHT SCREW THAT HOLDS THE FACE PLATE ON. ATTACH THE OTHER END OF THE SUPPORT CLIP TO THE TRIP UNIT MOUNTING WITH THE HARDWARE PROVIDED.

STEP 8H (PAGE 5): SKIP THIS STEP COMPLETELY.

STEP 9E (PAGE 6): EXCEPTION: CONNECT ONE WIRE TO THE NORMALLY CLOSED TERMINAL AND THE OTHER WIRE TO THE COMMON TERMINAL.



Free Manuals Download Website

<http://myh66.com>

<http://usermanuals.us>

<http://www.somanuals.com>

<http://www.4manuals.cc>

<http://www.manual-lib.com>

<http://www.404manual.com>

<http://www.luxmanual.com>

<http://aubethermostatmanual.com>

Golf course search by state

<http://golfingnear.com>

Email search by domain

<http://emailbydomain.com>

Auto manuals search

<http://auto.somanuals.com>

TV manuals search

<http://tv.somanuals.com>