



**GE Interlogix**

---



# Kalatel CBR-PB3-WD ProBridge Receipt Printer Interface Product Overview & Installation Manual

## Warning!

To prevent fire and electronic shock, do not expose this product to rain or moisture.



The lightning flash with the arrowhead symbol, within an equilateral triangle, is intended to alert the user to the presence of uninsulated "dangerous voltage" within the product's enclosure that may be of sufficient magnitude to constitute a risk of electric shock to persons.

The exclamation point, within an equilateral triangle, is intended to alert the user to the presence of important operating and maintenance (servicing) instructions in the literature accompanying the product.



## Caution!

To prevent electric shock, do not remove cover. No user serviceable components inside. Refer servicing to qualified service personnel.



## Caution! Electrostatic-Sensitive Device!

Use proper CMOS and MOSFET handling precautions, including approved grounded wrists straps, etc., to avoid damage to this unit or its internal components, from electric discharge.

## Warning!

This equipment generates, uses and can radiate radio frequency energy, and if not installed and used in accordance with the instructions in this manual, may cause interference to radio communications. It has been tested and found to comply with the limits for a Class A computing device pursuant to subpart J of part 15 of FCC rules which are designed to provide reasonable protection against such interference when operated in a commercial environment. This equipment has also been tested and found to comply with the requirements for a CE Class A device and TUV safety standards.

Operation of this equipment in a residential area may cause interference, in which case the user is required to take all measures that are necessary, at the user's expense, to correct the interference.

## Copyright Information

Software and/or firmware is furnished to the purchaser under a license for use on a single system. Software and/or firmware included with this equipment are the sole proprietary property of, confidential to, and copyrighted by Kalatel, Corvallis, Oregon, USA. The software/firmware are not to be copied or disclosed in any manner without the express written consent of Kalatel.

All information and specifications furnished by Kalatel are believed to be accurate and reliable. No responsibility is assumed by Kalatel for neither its use nor any infringements of rights of third parties that may result from its use. No license is granted by implication or otherwise under any patent or patent rights of Kalatel.

The **KALATEL™** brand name and product model numbers are the property of Kalatel.

©COPYRIGHT, 2003: The contents of this manual may not be copied or reproduced in any manner or form without the prior written consent of Kalatel.

# Table of Contents

<b>1</b>	<b>CBR-PB3-WD ProBridge.....</b>	<b>5</b>
1.1	Kalatel CBR-PB3-WD Description.....	5
1.2	Additional Equipment Provided by the Installer.....	5
1.3	Compatibility.....	5
1.4	Disclaimer.....	5
<b>2</b>	<b>Before You Begin.....</b>	<b>6</b>
2.1	Installation Summary.....	6
2.2	How to Use this Manual.....	6
2.3	Kalatel Components:.....	6
2.4	Installation Environment.....	7
2.5	Power.....	7
<b>3</b>	<b>ProBridge Diagram.....</b>	<b>9</b>
<b>4</b>	<b>Connection Diagram.....</b>	<b>11</b>
<b>5</b>	<b>Detailed Installation Steps.....</b>	<b>13</b>
5.1	PB3 Physical Installation.....	13
5.2	Configuring the PB3 for POS Interface.....	14
<b>6</b>	<b>Special Functions.....</b>	<b>16</b>
6.1	Display Memory.....	16
6.2	Demo (Simulated Message) Mode.....	16
6.3	Reset – Clear Memory.....	17
<b>7</b>	<b>Troubleshooting.....</b>	<b>19</b>
<b>8</b>	<b>Text to Camera Address.....</b>	<b>21</b>
<b>9</b>	<b>Manual Switch Config.....</b>	<b>23</b>
9.1	Manual Dipswitch Settings Available.....	23
9.1.1	Baud Rate.....	23
9.1.2	Protocol.....	24
<b>10</b>	<b>HyperTerminal Setup.....</b>	<b>26</b>
10.1	Equipment Required.....	26
10.2	Setting up the ProBridge for HyperTerminal Operation.....	27
10.3	Manual HyperTerminal Configuration.....	28
<b>11</b>	<b>PB3-POS with DVMRe-CD/CS Units.....</b>	<b>31</b>
11.1	DVMRe-CS/CD Setup.....	31

**12 Cable Specifications..... 33**

**13 Specifications ..... 35**

**14 Warranty and Service ..... 36**

14.1 Factory Service..... 36

14.2 Warranty..... 36

# 1 CBR-PB3-WD ProBridge

---

---

## 1.1 Kalatel CBR-PB3-WD Description

The Kalatel CBR-PB3-WD is a specific ProBridge unit for interfacing the DVMRe family of digital video multiplex/recorders Wayne Plus Receipt Printers (WP/RJ).

One CBR-PB3-WD is required per cash register. Where multiple cash registers are connected to a single DVMRe unit, the individual CBR-PB3-WD's are interconnected via the PB3's built-in RS-485 network.

## 1.2 Additional Equipment Provided by the Installer

Installations requiring multiple CBR-PB3-WD units are interconnected via the unit's built-in RS-485 network, the installer will need to provide suitable length RS-485 cable terminated with RJ-45 connectors.

## 1.3 Compatibility

The CBR-PB3-WD is compatible with the following DVMRe products:

DVMRe Type	Software Version	PPC Version
DVMRe-CD/CS	V 3.07 (and above)	V 3.07 (and above)
DVMRe-eZ	V 3.20 (and above)	V 3.14 (and above)
DVMRe-CT (Triplex)	V 4.0 (and above)	N/A
DVMRe-eZT (Triplex)	V 4.03 (and above)	N/A
StoreSafe Advanced	V 4.06 (and above)	N/A

To verify the software version in your unit, either note the display which identifies the version when the unit boots-up, or view the version information by clicking the **About** box in the unit's menu system.

## 1.4 Disclaimer

The Kalatel ProBridge components identified within this document provide means of capturing transaction text/data for use by the DVMRe family of digital video recording/transmission products. The ProBridge components translate the data into a usable format by the DVMRe and permits associating transaction data with specific cameras. Kalatel assumes no responsibility for the amount and type of information available, the operation, non-operation or erroneous operation of the customer provided equipment the ProBridge connects to.

# 2 Before You Begin

---

---

## 2.1 Installation Summary

The basic steps to install the CBR-PB3-WD unit are:

1. Connect the PB3 to the Receipt Printer using the supplied cable. (If more than two PB3 units are used, verify that proper termination is set on each individual PB3 unit.
2. Connect the PB3 to the DVMRe-CT/eZT/StoreSafe unit using the supplied cable (RJ45-to-RJ45). (If your unit is a DVMRe-CD/CS, the required interconnect cable is also provided (RJ45-to-DB9 - see Section 11 for the specific requirements for the DVMRe-CD/CS).
3. On each PB3, set the Camera ID switches for each PB3 that is to be associated with a specific camera.
4. Program the DVMRe unit to record in the way desired to meet your specific sites.

## 2.2 How to Use this Manual

We recommend that at least the following pages be reviewed before attempting an installation.

- ❑ ProBridge 3 Diagram on **page 9**.
- ❑ Connection Diagram on **page 11**.
- ❑ Installation & Configuration on **pages 13-15**.

## 2.3 Kalatel Components:

(1) CBR-PB3-WD ProBridge includes:

- (1) CBR-PB3-WD ProBridge unit.
- (1) P/N 4310-0034B: RJ45 to RJ45 cable. Connects the ProBridge to RS-485 Network. This cable is 6' in length.
- (1) P/N 4310-0047B: RJ45 to DB9F cable. Connects the ProBridge to the DVMRe. This cable is 6' in length.
- (1) P/N 4310-0078A: DB9F to DB9M to DB9F 'Y' cable. Connects the ProBridge to the Electronic Cash Register (ECR) and the Receipt Printer This cable is 6' in length.
- (1) P/N 4010-0007: 12VDC 120VAC Power Supply or  
(1) P/N 4010-0008: 12VDC 220VAC Power Supply.
- (1) P/N 0150-0261A: Product Overview and Installation Manual.

## 2.4 Installation Environment

**Power:** Ensure that the installation site's AC power is stable and within the rated voltage of the external power supply. If the site's AC power is likely to have spikes or dips, use power line conditioning or an Uninterruptible Power Supply.

**Temperature:** Observe the unit's ambient temperature specifications when choosing a location for the unit. Extremes of heat or cold beyond the specified operating temperature limits may cause the unit to fail. Do not install this unit on top of other hot equipment.

**Moisture:** Do not expose the unit to rain or moisture. Moisture can damage internal components. Do not install this unit near sources of water.

**RS-232 Limitations:** Cable length between the POS device and the ProBridge is limited to 50'. Cable length between the ProBridge unit and the DVMRe is also limited to 50'. If the supplied cables are replaced by custom made cables to address distances between components, ensure the cable is manufactured to ANSI standards for RS-232 communication.

**RS485 Limitations:** If multiple PB3 units are connected to a single DVMRe unit, the distance between the first and last ProBridge unit is limited to 3,000 feet (RS-485 communications).

## 2.5 Power

The ProBridge is furnished with a power supply (110 or 240 VAC). Do not use any other power supply with this product. The manufacturer accepts no responsibility for damage caused by the use of any other power supply.

Make sure installation is complete and all connections are made before applying power to the unit.

### 4310-0007 120VAC Power Supply

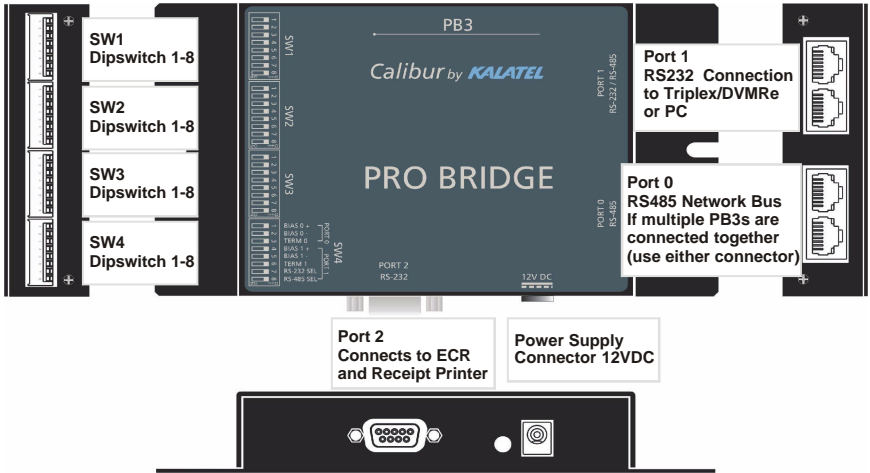
Power Supply Input
<b>Voltage:</b> 120 Volt AC
<b>Tolerance:</b> ±10%
<b>Frequency:</b> 60 Hz
Power Supply Output
<b>Voltage:</b> 12 Volt DC
<b>Current:</b> 110mA
<b>Power:</b> 1.3 Watts
<b>Connector:</b> 2.1mm female barrel. Center Positive

## 4310-0008 220VAC Power Supply

<b>Power Supply Input</b>
<b>Voltage:</b> 220 Volt AC <b>Tolerance:</b> $\pm 10\%$ <b>Frequency:</b> 50 Hz
<b>Power Supply Output</b>
<b>Voltage:</b> 12 Volt DC <b>Current:</b> 110mA <b>Power:</b> 1.3 Watts <b>Connector:</b> 2.1mm female barrel. Center Positive



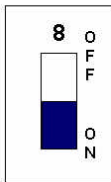
# 3 ProBridge Diagram



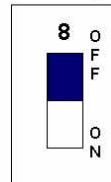
Port 0 and Port 1 each have identical looping RJ45 connectors.

## Dipswitch Position Legend

ON = Down



OFF = Up



## Default (Factory) Dipswitch Settings

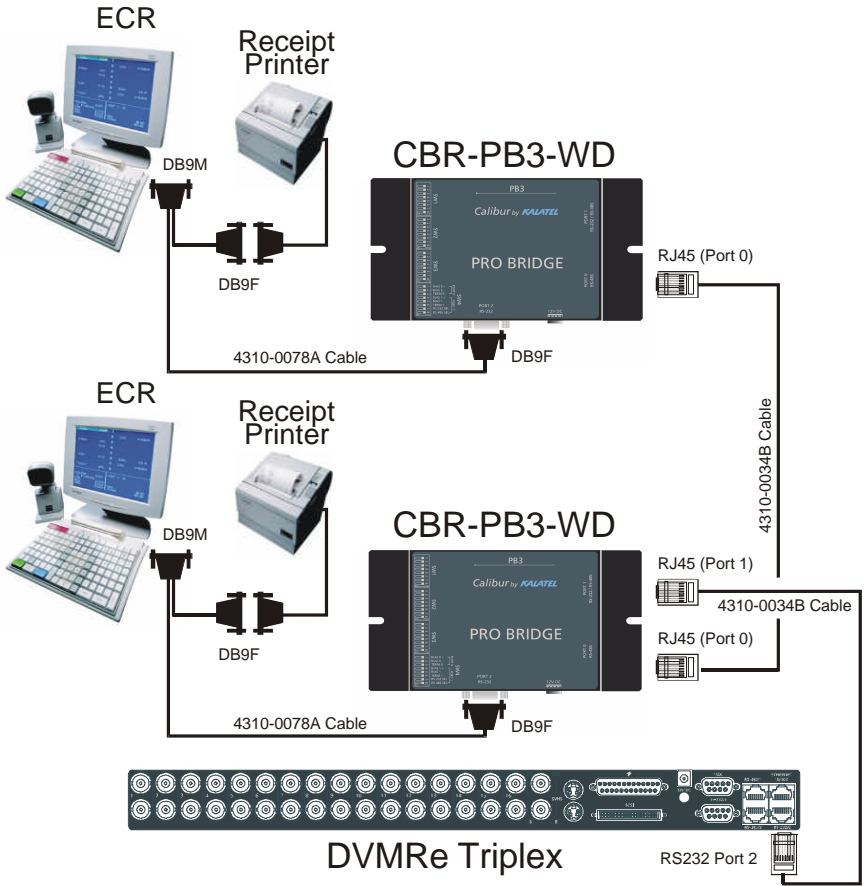
SW1		SW2		SW3		SW4	
1	Up	1	Down	1	Down	1	Up
2	Up	2	Down	2	Down	2	Up
3	Up	3	Down	3	Down	3	Down
4	Down	4	Down	4	Down	4	Up
5	Up	5	Down	5	Down	5	Up
6	Up	6	Down	6	Down	6	Up
7	Up	7	Down	7	Down	7	Down
8	Up	8	Down	8	Down	8	Up

The default camera assignment is for the PB3's transaction information to be associated with Camera 1.

### Important Switch Assignments

<b>SW1</b>	Dipswitch 1-4	Special Functions (see Section 6)
	Dipswitch 5-8	Camera Assignment
<b>SW2</b>	Dipswitch 1	Reserved
	Dipswitch 2-4	Baud Rate
	Dipswitch 5-8	Protocol
<b>SW3</b>	Dipswitch 1-8	Receipt Printer Device Select
<b>SW4</b>	Dipswitch 3	ProBridge Termination

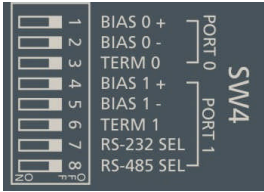
# 4 Connection Diagram



If the distance between the nearest register PB3 is greater than 50' (RS-232 distance limitation), an additional PB3 can be added near the DVMRe allowing RS-485 communication between the PB3 units. If there are more than (2) two PB3's required per installation, please verify proper termination.

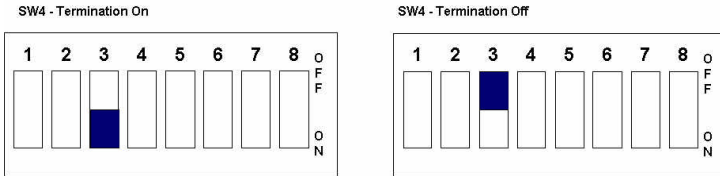
# Termination Switch

Termination is set on **SW4** for PORT 0 (**Dipswitch #3**)

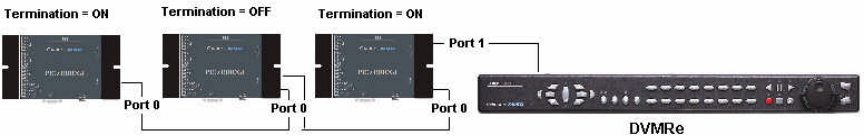
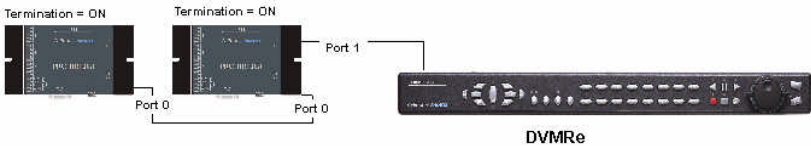


Termination is important whenever multiple PB3 units are interconnected via the unit's built-in RS-485 network. The default termination setting on the ProBridge 3 unit is with termination set to **ON**.

Whenever there are more than two PB3's, termination on some of the PB3 units will change. The first PB3 and the last PB3 on the RS-485 network will have termination set to **ON (Down)**, all others between these two units will have their termination set to **OFF (Up)**.



## Sample Systems Termination:



# 5 Detailed Installation Steps

---

---

## 5.1 PB3 Physical Installation

1. Disconnect the existing Receipt Printer cable from the back of the POS system and install the ECR Interconnect Cable (4310-0078A) to the Receipt Printer as shown on page 11.
2. Reconnect the Receipt Printer Cable to one of the D9F connectors on the ECR Interconnect Cable as shown on page 11.
3. Connect the other end (DB9F) to the DB9M connector on the PB3 unit.
4. Connect the PB3 Power Supply to the unit.

*If only one (1) PB3 unit (one cash register) is to be connected, skip to **Step 8** below.*

5. If more than one cash register interface is to be installed repeat steps 1-4 above for each additional cash register.
6. Connect each PB3 unit together by using an RS-485 cable with RJ-45 connectors on each end. Connect to either receptacle on Port 0 to interconnect the PB3 units using an "in" and "out" method. (For details on the RS-485 cable, review the cable specifications in Section 13).  
**Note: This cable shall be provided by the installer.**
7. Confirm that each PB3 has the proper termination setting per the instructions on page 12.
8. Connect all ECR cameras to their associated inputs on the DVMRe unit (ECR#1 = Camera 1 Input, ECR#2 = Camera 2 Input...)
9. Connect the PB3 closest to the DVMRe using the supplied cable (4310-0043B) from Port 1 (RJ45 outer receptacle) of the PB3 to the RS232/2 port on the DVMRe unit.

## 5.2 Configuring the PB3 for POS Interface

### 1. Associating ECR data to a specific camera.



Dipswitches **5-8** on **SW1** are used for assigning an ECR's transaction text to a specific camera.

Please refer to **Section 8** for the specific dipswitch camera assignments. The default setting is for switches 5-8 to be all OFF (All switches Up = Camera 1).

2. **Program the DVMRe for the desired recording** functions based upon the presence of transaction text. In addition make sure the RS-232 port on the DVMRe is configured correctly set via the DVMRe Setup Menu:
  - a. **COMMUNICATIONS>RS-232>PORT (1 OR 2)>19200**
    - i. Port 2 is used if DVMRe-CT/eZT/StoreSafe
    - ii. Port 1 is used if DVMRe-CS/CD/eZ



Transaction text is captured with video regardless of the recording mode (Time-Lapse, Time-Lapse + Event, or Event Only). If Time-Lapse + Event or Event Only recording modes must have at least one (1) second set for the pre-event duration.

### 3. Process several POS transactions at the Cash Register.

- a. To verify proper operation with a DVMRe-CT/eZT/StoreSafe unit:
  - i. Select full-screen on the Main Monitor (A) the camera associated with a PB3 unit. Press the camera button until the text box window appears in the display.
  - ii. The text box will display any transaction data as it is passed to the PB3 unit from the POS device. Be aware that some POS devices only send transaction data until the end of the transaction (when the receipt is printed).

- iii. If the unit fails to display transaction text, please go to the troubleshooting section of this manual.
- b. To verify proper operation using a DVMRe–CS/CD/eZ, please refer to **Section 11**.

# 6 Special Functions

---

---



If these settings are used, they must be turned off before normal transaction processing will resume.

## 6.1 Display Memory

This setting displays all internal memory settings through Port 1 on the text box window of the selected camera on a DVMRe Triplex. This allows you to quickly check what settings are in your unit.

To access this mode:

SW1	
1	Down
2	Down
3	Up
4	Up

To exit this mode, return the dipswitches to the following position:

SW1	
1	Up
2	Up
3	Up
4	Up

## 6.2 Demo (Simulated Message) Mode

This setting permits the PB3 to send a simulated ATM transaction message to the DVMRe/Triplex. This is useful for either for troubleshooting or for demonstrating PB3 functionality without having an ATM connected.



As a troubleshooting tool, this element allows you to verify that the PB3 is able to send messages and have the DVMRe correctly capture data coming from the PB3. In this mode, if text can be received and displayed, yet when attempting to process ECR data fails, then some other problem exists with respect to the ECR connection (cabling) or interface setup.

To access this mode:

SW1	
1	Down
2	Down
3	Up
4	Down

To exit this mode return the dipswitches to the following position:

SW1	
1	Up
2	Up
3	Up
4	Up

## 6.3 Reset – Clear Memory

This is primarily a troubleshooting tool that allows the user to clear the non-volatile memory of all settings. This will restore all factory defaults as a first step to reconfiguring the unit.

To access this mode:

SW1	
1	Down
2	Down
3	Down
4	Down

To exit this mode return the dipswitches to the following position:

SW1	
1	Up
2	Up
3	Up
4	Up



Power must be cycled OFF and then ON to the ProBridge unit before the reset command will take effect.

# 7 Troubleshooting

---

---

If you are unable to verify capture of transaction text, do the following:

1. Check that each device is properly powered.
2. Check that the ECR to Camera address is correctly programmed **SW1**.
3. Check that all cables and cable connections are correct
4. If data is being displayed but is not intelligible, the likelihood is that the baud rate is different than the default value for the selected register. Check with the baud rate settings for the Receipt Printer on your POS system.

To change the Baud Rate, the available settings are controlled via the dipswitch settings on **SW2** (dipswitches 2-4).

**Legend:**    **Up (Off) = U**                      **Down (On) = D**

<b>Baud Rate Port 2</b>	<b>SW2 Switch Setting</b>		
	<b>2</b>	<b>3</b>	<b>4</b>
1200	<b>U</b>	<b>U</b>	<b>U</b>
2400	<b>U</b>	<b>U</b>	<b>D</b>
4800	<b>U</b>	<b>D</b>	<b>U</b>
9600	<b>U</b>	<b>D</b>	<b>D</b>
14.4k	<b>D</b>	<b>U</b>	<b>U</b>
19.2k	<b>D</b>	<b>U</b>	<b>D</b>
38.4k	<b>D</b>	<b>D</b>	<b>U</b>

5. If the DVMRe is not receiving data at all, you can use a built-in demonstration text message to verify that the PB3 is passing data to the DVMRe (see Section 6.2 for demo mode).
  - a. Remember to return the dipswitches to the normal mode (Demo mode off).
6. If you are still unable to get the Interface to work, please contact Kalatel Technical Support.

7. Section 4 contains all of the default Jumper Settings, if it is necessary for you to manually configure the interface.

## Troubleshooting Guide

Problem	Solution
Red LED is not illuminated	Check to make sure the power transformer is plugged in properly.
	Replace power transformer.
Cannot display demo text	Make sure the Triplex is showing the text box on Monitor A.
	Dip switch setting should be SW1: ON ON OFF ON
	Check that the serial cable is plugged into Port RS232/2 on the Triplex and Port 1 of the PB3 with the RJ45 to RJ45 cable (4310-0034B).
	Ensure the baud rate for Port 2 (RS232) on the Triplex is set to 19200 bps.
	Ensure camera addresses are set correctly.
Cannot connect with HyperTerminal	Check cable connection.
	Ensure the computers com port is enabled in the system bios and Windows control panel.
	Verify HyperTerminal's communication settings are 19200, 8, N, 1, no flow control.

# 8 Text to Camera Address

---

---

**This section contains dipswitch settings for associating a specific Cash Register's transaction text with a specific camera on the DVMRe unit.**

## SW1 - Dipswitches 5-8

Dipswitches 5 thru 8 on **SW1** assigns transaction text for that cash register's PB3 unit to a specific camera on the DVMRe.

<b>Legend:</b> Off = (Up)        On = (Down)
--

	<b>SW1 Dipswitch 5- 8 Camera Assignment Dipswitch Numbers</b>			
Camera #	5	6	7	8
1	UP	UP	UP	UP
2	UP	UP	UP	DOWN
3	UP	UP	DOWN	UP
4	UP	UP	DOWN	DOWN
5	UP	DOWN	UP	UP
6	UP	DOWN	UP	DOWN
7	UP	DOWN	DOWN	UP
8	UP	DOWN	DOWN	DOWN
9	DOWN	UP	UP	UP
10	DOWN	UP	UP	DOWN
11	DOWN	UP	DOWN	UP

	<b>SW1 Dipswitch 5- 8 Camera Assignment Dipswitch Numbers</b>			
Camera #	5	6	7	8
12	DOWN	UP	DOWN	DOWN
13	DOWN	DOWN	UP	UP
14	DOWN	DOWN	UP	DOWN
15	DOWN	DOWN	DOWN	UP
16	DOWN	DOWN	DOWN	DOWN

# 9 Manual Switch Config

---

---

Manual configuration should only be used if the “POS Device Selection” does not conform to your specific device because baud rates or protocols are slightly different than the default values for the selected device.

## 9.1 Manual Dipswitch Settings Available

- Camera Address (SW1 – Dipswitches 5-8)  
– see Section 8
- Baud Rate (SW2 – Dipswitches 2-4)
- Protocol (SW2 – Dipswitches 5-8)

### 9.1.1 Baud Rate

Legend:    Up (Off) = U                      Down (On) = D

Baud Rate Port 2	SW2 Switch Setting		
	2	3	4
1200	U	U	U
2400	U	U	D
4800	U	D	U
9600	U	D	D
14.4k	D	U	U
19.2k	D	U	D
38.4k	D	D	U

## 9.1.2 Protocol

Legend: Up (Off) = U

Down (On) = D

	SW2 Switch Setting			
	5	6	7	8
<input type="checkbox"/> Protocol: Asynchronous <input type="checkbox"/> Parity: Even <input type="checkbox"/> Code: 8-Bit ASCII <input type="checkbox"/> Mode: 1 Stop Bit	U	D	U	D
<input type="checkbox"/> Protocol: Asynchronous <input type="checkbox"/> Parity: Odd <input type="checkbox"/> Code: 8-Bit ASCII <input type="checkbox"/> Mode: 1 Stop Bit	U	D	U	U
<input type="checkbox"/> Protocol: Asynchronous <input type="checkbox"/> Parity: None <input type="checkbox"/> Code: 8-Bit ASCII <input type="checkbox"/> Mode: 1 Stop Bit	U	U	D	D
<input type="checkbox"/> Protocol: Asynchronous <input type="checkbox"/> Parity: Even <input type="checkbox"/> Code: 7-Bit ASCII <input type="checkbox"/> Mode: 1 Stop Bit	U	U	D	U
<input type="checkbox"/> Protocol: Asynchronous <input type="checkbox"/> Parity: Odd <input type="checkbox"/> Code: 7-Bit ASCII <input type="checkbox"/> Mode: 1 Stop Bit	U	U	U	D
<input type="checkbox"/> Protocol: Asynchronous <input type="checkbox"/> Parity: None <input type="checkbox"/> Code: 7-Bit ASCII <input type="checkbox"/> Mode: 1 Stop Bit	U	U	U	U



	SW2 Switch Setting			
	5	6	7	8
<input type="checkbox"/> <b>Protocol: Asynchronous</b> <input type="checkbox"/> <b>Parity: Even</b> <input type="checkbox"/> <b>Code: 8-Bit ASCII</b> <input type="checkbox"/> Mode: 2 Stop Bit	D	U	D	D
<input type="checkbox"/> <b>Protocol: Asynchronous</b> <input type="checkbox"/> <b>Parity: Odd</b> <input type="checkbox"/> <b>Code: 8-Bit ASCII</b> <input type="checkbox"/> Mode: 2 Stop Bit	D	U	D	U
<input type="checkbox"/> <b>Protocol: Asynchronous</b> <input type="checkbox"/> <b>Parity: None</b> <input type="checkbox"/> <b>Code: 8-Bit ASCII</b> <input type="checkbox"/> Mode: 2 Stop Bit	D	U	U	D
<input type="checkbox"/> <b>Protocol: Asynchronous</b> <input type="checkbox"/> <b>Parity: Even</b> <input type="checkbox"/> <b>Code: 7-Bit ASCII</b> <input type="checkbox"/> Mode: 2 Stop Bit	D	U	U	U
<input type="checkbox"/> <b>Protocol: Asynchronous</b> <input type="checkbox"/> <b>Parity: Odd</b> <input type="checkbox"/> <b>Code: 7-Bit ASCII</b> <input type="checkbox"/> Mode: 2 Stop Bit	U	D	D	D
<input type="checkbox"/> <b>Protocol: Asynchronous</b> <input type="checkbox"/> <b>Parity: None</b> <input type="checkbox"/> <b>Code: 7-Bit ASCII</b> <input type="checkbox"/> Mode: 2 Stop Bit	U	D	D	U

# 10 HyperTerminal Setup

---

---

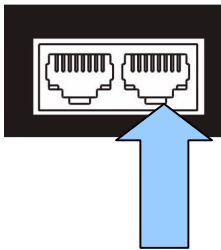
Manual configuration can also be completed using Windows HyperTerminal in lieu of the dipswitches. Manual configuration should only be used if the "POS Device Selection" does not conform to your specific device because baud rates or protocols are slightly different than the default values for the selected device.

## 10.1 Equipment Required

- ❑ (1) Windows 98/NT/2000/XP Desktop or Laptop PC.
- ❑ (1) DB9F to RJ45 cable (included with your unit).



Configuration using Windows HyperTerminal uses the supplied RJ45-to-DB9 cable provided with your unit. Disconnect the PB3 unit from the DVMRe and hook-up the cable as follows:



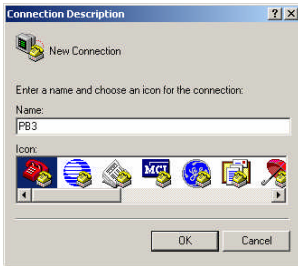
The RJ45 end connects to the outside receptacle of Port 1 of the PB3 unit and the DB9 end connects to your PC's COM Port (typically COM1).



***IMPORTANT: If you program the ProBridg via HyperTerminal you must BACKUP (Save) the program information via the BACKUP option so that everytime the unit is powered up, the settings you configured will be used.***

# 10.2 Setting up the ProBridge for HyperTerminal Operation

1. Start HyperTerminal and open a new Connection (FILE>NEW):



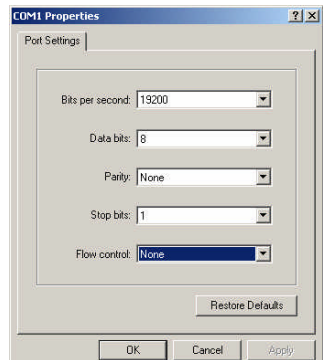
Give the connection a name and select an Icon.

Click **OK**.

2. Under “Connect Using” option select “COM1”.



3. The Com1 Properties menu will appear. Select the following settings to complete the setup:
  - a. Bits per Second = 19200
  - b. Data Bits = 8
  - c. Parity = None
  - d. Stop Bits = 1
  - e. Flow Control = None



4. Power up the ProBridge unit by plugging in the power supply.

# 10.3 Manual HyperTerminal Configuration

- The configurable settings are:
  - Protocol
  - Baud Rate
  - Parity
  - # of Stop Bits
  - Character Set
  - POS Device Type

1. The following screen (or similar) will confirm that you are in HyperTerminal programming mode.

```
Initializing from DIP
Switches
Kalatel ProBridge III POS
Ver: 2.10
Camera: 16
```

2. Once HyperTerminal mode is set up, press the “Enter” key twice. The following menu will appear:

```
Main Menu
1. Exit
2. Port #2
3. Backup
```

To make a menu selection, enter the number of the element and press “Enter”.

For example:


Input the following      **2**      **ENTER**      (Port #2)

3. **Setup Option 2 (Port #2)**

Port #2 is an RS-232 port that connects the PB3 unit to the Receipt Printer Interconnect Cable. The settings will vary based upon the type of Receipt Printer in use.

Once you have selected this option, there will be multiple selections available for each element. Entering the number for the element will switch to the next option for that element. Continue to enter the same element number until the desired entry appears.

The menu options are presented similar to the following screen:



```
RS-232 Options
1. Main Menu
2. Protocol: Async
3. Baud Rate: 9600
4. Parity: None
5. Mode: 1-stop
6. Code: 8-Bit ASCII
7. Device: Wayne Dresler
```



To return to the Main Menu at any time press “1” and hit “Enter”

a. **Menu Selection 2 – Protocol Options**

- Asynchronous

- b. **Menu Selection 3 – Baud Rate**  
Baud Rate is only used if Protocol option selected is Asynchronous.
- 1200
  - 2400
  - 4800
  - 9600
  - 14.4K
  - 19.2K
  - 38.4K
- c. **Menu Selection 4 – Parity**
- None
  - Odd
  - Even
- d. **Menu Selection 5 – Mode**  
The available selections are:
- 1-Stop (bit)
  - 2-Stop (bit)
- e. **Menu Selection 6 – Code (Character)**  
The available selections are:
- 7-Bit ASCII
  - 8-Bit ASCII
- f. **Menu Selection 7 – Device Type**
- Generic Receipt Printer
  - Epson Printer
  - Citizen Printer
  - ...other printers may be included



***IMPORTANT: You must BACKUP (Save) the program information via the BACKUP option so that everytime the unit is powered up, the settings you configured will be used. Go back to the Main Menu and select element #3 BACKUP and select the option to Save the settings.***

# 11 PB3-POS with DVMRe -CD/CS Units

If the unit to be connected to the PB3 is a DVMRe-CD (Duplex) or a DVMRe-CS (Simplex) unit, please note the following changes to the normal installation and configuration process below.



Kalatel recommends using a DVMRe-CT (Triplex) unit to initially connect the PB3 unit to. The on-screen text display will make it easy to confirm successful capture of POS transactions. Once you have confirmed proper operation, disconnect the Triplex unit and hook-up the Duplex (or Simplex) unit as indicated below. Alternatively, you can confirm configuration using a Laptop/PC running Windows HyperTerminal.

## 11.1 DVMRe-CS/CD Setup

Follow the installation steps in Section 5.1 through step number 8:

Connecting the PB3 to a DVMRe-CS/CD:

The PB3 connects to either RS-232/1 or RS-232/2 port of the DVMRe-CD/CS depending on if a modem is installed on RS-232/1 port.

a. NO MODEM

- i. ProBridge Port #1 (RJ45) connects to RS-232/1 Port of the DVMRe-CD/CS using the supplied RJ45 to DB9F cable.
- ii. The DVMRe communications port needs to be programmed as follows:

**Communications>RS-232>Port 1 > ATM Activate**

b. MODEM (Connected to RS-232/1 Port of DVMRe-CD/CS)

- i. ProBridge Port #1 (RJ45) connects to RS-232/2 Port of the DVMRe-CD/CS using a RJ45 to DB9M cable. The provided RJ45 to DB9F cable can be used provided a

gender changer is added to match the DB9M connector needed for the port on the DVMRe-CD/CS.

- ii. Modem must be configured for Port 1. The menu setup is: Communications>RS-232>Port 1> POTS.
- iii. The unit will have to be opened and a specific jumper setting set to allow text insertion on RS-232/2 Port. Contact Kalatel Tech Support for instructions on configuring the PORT 2 for text insertion.



Transaction text is captured with video regardless of recording mode (Time-Lapse, Time-Lapse+Event or Event only). If Time-Lapse+Event or Event only recording modes must have at least one second set for the pre-event duration.

## Final Testing

After hooking up the Duplex or Simplex unit, have some POS transactions generated. Allow sufficient time (2-3 minutes) before stopping recording and performing a text search from the DVMRe-CD/CS unit. Search for events based upon text and place a "\*" in the text field and then select "Start Search". All captured Cash Register transactions will be displayed in the list.



# 12 Cable Specifications

## ProBridge to Triplex (DVMRe-CT)

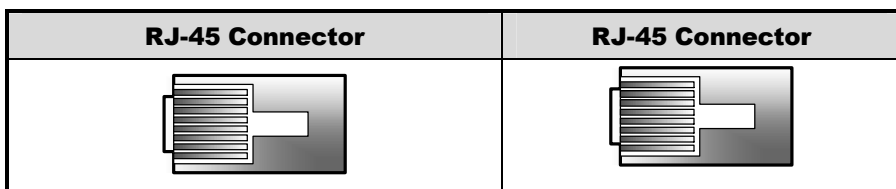
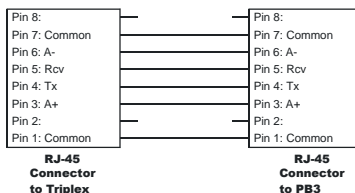
Part Number : 4310-0034B

Communication Type: RS232

Connector Type: RJ-45, RJ-45

Cable Required: 5 Foot RJ-45 to RJ-45

Triplex RS232 Cable (Supplied).  
Connects ProBridge to DVMRe-CT.



## ProBridge to DVMRe (DVMRe-CD/S)

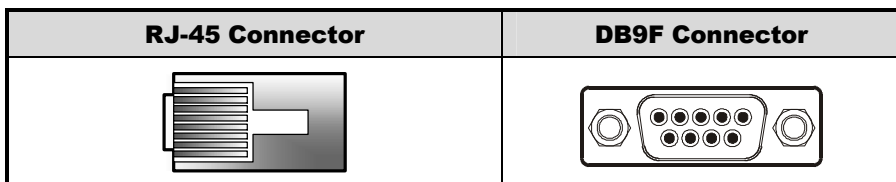
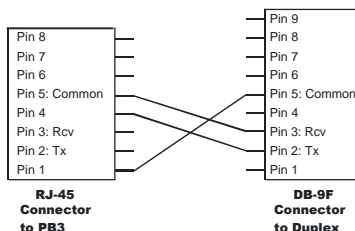
Part Number : 4310-0047B

Communication Type: RS232

Connector Type: RJ-45 ,DB9F

Cable Required: 6 Foot RJ-45 to DB9F  
RS232 Cable (Supplied). Connects  
ProBridge to DVMRe-CD/CS.

NOTE: This cable also used for  
Programming ProBridge via Windows  
HyperTerminal



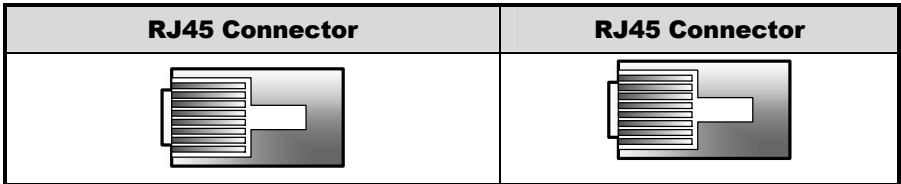
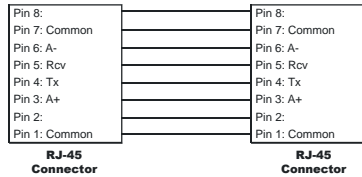
# ProBridge to ProBridge Cable

Part Number : Installer Provided

Communication Type: RS-485

Connector Type: RJ45, RJ45

Cable Required: RS-485 Interconnect Cable (up to 3,000'). Interconnects multiple PB3's in a RS485 network.



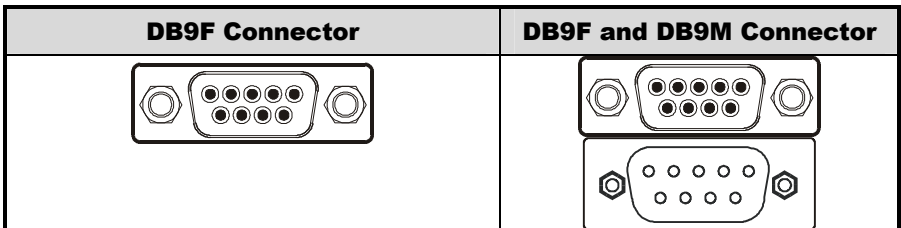
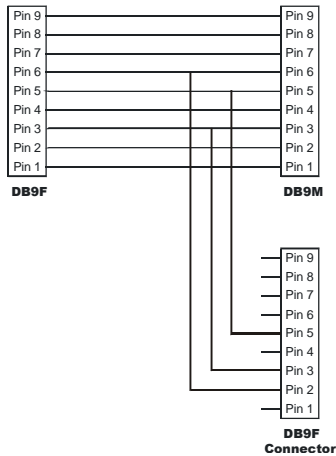
# ProBridge to ECR and Receipt Printer

Part Number : 4310-0078A

Communication Type: RS232

Connector Type: DB9F to DB9M to DB9F.

Cable Required: 6 Foot RS232 Cable (Supplied). Connects PB3 to the ECR and the Receipt Printer.



# 13 Specifications

---

---

Physical	
<b>Housing</b>	Metal enclosure.
<b>Dimensions (W x L x H)</b>	4.0" x 7.0" x 1.0". (100mm x 175mm x 25 mm)
<b>Nominal Weight</b>	4.8 oz (136 g)
<b>Shipping Weight</b>	1 lb (453 g) packaged, including the external AC power supply and manual.
<b>Color</b>	Black.

Environmental	
<b>Temperature</b>	0 to 40 °C, operating.
<b>Relative Humidity</b>	90%, non-condensing.

Electrical	
<b>AC Power</b>	External AC power supply included.
<b>Voltage Range:</b>	110 to 240 VAC $\pm$ 10%
<b>Current:</b>	200 mA
<b>DC Power</b>	DC jack, positive center.
<b>Power Supply Voltage:</b>	12 VDC
<b>Current:</b>	110 mA
<b>Power:</b>	1.5 W



All specifications are subject to change without notice. Kalatel believes that all specifications are correct, however no liability is assumed for omissions or errors.

# 14 Warranty and Service

---

---

## 14.1 Factory Service

If the unit requires factory service, contact the dealer who supplied the unit to you for the correct procedures on returning the unit to the factory or the nearest factory service center.

If the dealer is not available, contact the manufacturer of the unit as detailed below and request a Return Material Authorization number (RMA). The unit's serial number must be provided before an RMA number can be issued. Units returned to the factory for service must have freight and insurance prepaid, and must show the RMA number clearly on all shipping documents. The failure symptoms must be clearly described by the operator and enclosed with the unit together with a copy of the original supplier's invoice. Failure to comply with these instructions will delay service of the unit, and may result in the unit not being accepted by the Repair Center.

### Factory Address

Kalatel

Attention: Repair Center

3197-C Airport Loop Drive

Costa Mesa, CA 92626

United States of America

Telephone: 800-343-3358 (7:00 AM to 4:30 PM, Pacific Time)

In Oregon: 541-754-9133

Fax: 541-754-7162 (24 hours a day)

For warranty information, see the following page.

## 14.2 Warranty

Kalatel warrants all of its equipment for three years from the date of purchase. This warranty covers any defects in materials and workmanship. Equipment failures that are due to improper installation, modification, abuse, or acts of nature will not be covered by this warranty. The repair department will evaluate all equipment returned for repair to determine warranty coverage. The Tech Support Manager will resolve any questions that may arise during evaluation to make a final determination.

**Note:** The three-year warranty does not apply to the following products:

MobileView<sup>®</sup> and the monitor CRT, which carry a 12-month warranty from the date of purchase.

The warranty specifically covers any defects in material and workmanship and does not cover equipment that has been abused, damaged, or modified.

**For all warranty repairs**, Kalatel will cover all costs, including parts, labor, and shipping. Repaired equipment will be returned via the same method of shipment in which it was received. If a customer requests a faster return shipment, the difference will be charged.

**For all non-warranty repairs**, the customer will be billed for parts, labor, and shipping. Labor will be billed in half-hour increments.

**Note:** Customers requesting an estimate prior to repair will be notified by phone. If they cannot be reached, they will be notified by fax. If we are unable to reach the contact person for repair authorization after one phone attempt and two fax attempts, the equipment will be returned without being repaired. We will hold equipment no longer than two weeks.

## **Advance Replacement Policy**

When an advance replacement is required, we will send the customer replacement equipment from our stock and receive the returned product in exchange. The received equipment will be evaluated and the repair department will determine whether it is a warranty replacement. If it is non-warranty, see our repair policy above for details. The following guidelines will be used for all advance replacements:

- Fewer than 45 days from purchase, Kalatel will replace the product with new equipment.
- From 45 days to 1 year from purchase, Kalatel will replace the product with refurbished equipment.
- From 1 year to 3 years from purchase, the product must be sent in for repair. Advance replacements will be sent for a fee of \$100.

If you have questions about this policy, please contact Kalatel's RMA Department at 800-469-1676.

## Free Manuals Download Website

<http://myh66.com>

<http://usermanuals.us>

<http://www.somanuals.com>

<http://www.4manuals.cc>

<http://www.manual-lib.com>

<http://www.404manual.com>

<http://www.luxmanual.com>

<http://aubethermostatmanual.com>

Golf course search by state

<http://golfingnear.com>

Email search by domain

<http://emailbydomain.com>

Auto manuals search

<http://auto.somanuals.com>

TV manuals search

<http://tv.somanuals.com>