



# Refrigerators

*Safety Information* . . . . . 2–4

*Operating Instructions*

Care and Cleaning . . . . . 7–9

Control Settings . . . . . 5

Refrigerator Features . . . . . 6

Replacing the Light Bulb . . . . . 7

*Installation Instructions* . . 10–12

Troubleshooting Tips . . . 13, 14

*Consumer Support*

Consumer Support . . . Back Cover

Warranty . . . . . 15

**Owner's Manual  
& Installation  
Instructions**

3ft 2 Door Model

## **ATTENTION:**

*Defrosting—Do not use sharp, pointed objects to remove frost or ice from surfaces of the refrigerator and/or freezer compartment. Doing so could puncture the cooling coil, causing the unit to lose its ability to maintain cold temperatures and voiding the warranty. See the Care and Cleaning section for instructions on defrosting the refrigerator and/or freezer compartment.*

Write the model and serial numbers here:

Model # \_\_\_\_\_

Serial # \_\_\_\_\_

Find these numbers on a label inside the refrigerator on the side wall.



## **IMPORTANT SAFETY INFORMATION. READ ALL INSTRUCTIONS BEFORE USING.**

### **⚠ WARNING!**

Use this appliance only for its intended purpose as described in this Owner's Manual.



### **SAFETY PRECAUTIONS**

When using electrical appliances, basic safety precautions should be followed, including the following:

- This refrigerator must be properly installed and located in accordance with the Installation Instructions before it is used.
- Do not allow children to climb, stand or hang on the shelves in the refrigerator. They could damage the refrigerator and seriously injure themselves.
- Do not store or use gasoline or other flammable vapors and liquids in the vicinity of this or any other appliance.
- **Before replacing a burned-out light bulb, the refrigerator should be unplugged** in order to avoid contact with a live wire filament. (A burned-out light bulb may break when being replaced.)
- Keep fingers out of the "pinch point" areas; clearances between the doors and cabinet are necessarily small. Be careful closing doors when children are in the area.
- Unplug the refrigerator before cleaning and making repairs.
- GE does not support any servicing of the refrigerator.
- Turning the temperature control dial to the **0** position stops cooling but does not shut off power to the refrigerator.

## **⚠ DANGER! RISK OF CHILD ENTRAPMENT PROPER DISPOSAL OF THE REFRIGERATOR**



Child entrapment and suffocation are not problems of the past. Junked or abandoned refrigerators are still dangerous... even if they will sit for "just a few days." If you are getting rid of your old refrigerator, please follow the instructions below to help prevent accidents.

### **Before You Throw Away Your Old Refrigerator or Freezer:**

- Take off the doors.

- Leave the shelves in place so that children may not easily climb inside.

### **Refrigerants**

All refrigeration products contain refrigerants, which under federal law must be removed prior to product disposal. If you are getting rid of an old refrigeration product, check with the company handling the disposal about what to do.



## USE OF EXTENSION CORDS

Because of potential safety hazards under certain conditions, we strongly recommend against the use of an extension cord.

However, if you must use an extension cord, it is absolutely necessary that it be a UL-listed, 3-wire grounding type appliance extension cord having a grounding type plug and outlet and that the electrical rating of the cord be 15 amperes (minimum) and 120 volts.



## HOW TO CONNECT ELECTRICITY

Do not, under any circumstances, cut or remove the third (ground) prong from the power cord. For personal safety, this appliance must be properly grounded.

The power cord of this appliance is equipped with a 3-prong (grounding) plug which mates with a standard 3-prong (grounding) wall outlet to minimize the possibility of electric shock hazard from this appliance.

Have the wall outlet and circuit checked by a qualified electrician to make sure the outlet is properly grounded.

If you have only a standard 2-prong wall outlet, it is your personal responsibility and obligation to have it replaced with a properly grounded 3-prong wall outlet.

The refrigerator should always be plugged into its own individual electrical outlet which has a voltage rating that matches the rating plate.

This provides the best performance and also prevents overloading house wiring circuits which could cause a fire hazard from overheated wires.

Never unplug your refrigerator by pulling on the power cord. Always grip plug firmly and pull straight out from the outlet.

Repair or replace immediately all power cords that have become frayed or otherwise damaged.

Do not use a cord that shows cracks or abrasion damage along its length or at either end.

When moving the refrigerator away from the wall, be careful not to roll over or damage the power cord.

## ***IMPORTANT SAFETY INFORMATION. READ ALL INSTRUCTIONS BEFORE USING.***

### **⚠ WARNING!**



### **USE OF ADAPTER PLUGS**

Because of potential safety hazards under certain conditions, we strongly recommend against the use of an adapter plug.

However, if you must use an adapter, where local codes permit, a **temporary connection** may be made to a properly grounded 2-prong wall outlet

by use of a UL-listed adapter available at most local hardware stores.

The larger slot in the adapter must be aligned with the larger slot in the wall outlet to provide proper polarity in the connection of the power cord.

When disconnecting the power cord from the adapter, always hold the adapter in place with one hand while pulling the power cord plug with the other hand. If this is not done, the adapter ground terminal is very likely to break with repeated use.

If the adapter ground terminal breaks, **DO NOT USE** the refrigerator until a proper ground has been established.

Attaching the adapter ground terminal to a wall outlet cover screw does not ground the appliance unless the cover screw is metal, and not insulated, and the wall outlet is grounded through the house wiring. You should have the circuit checked by a qualified electrician to make sure the outlet is properly grounded.

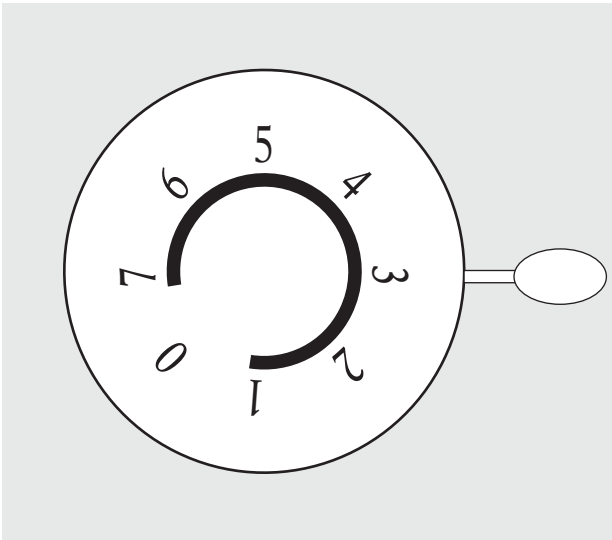


## **READ AND FOLLOW THIS SAFETY INFORMATION CAREFULLY.**

### ***SAVE THESE INSTRUCTIONS***

## About the control on the refrigerator.

www.GEAppliances.com



The control will look like the one above.  
The arrow indicates the setting selected.



### Control Settings

The temperature control maintains the temperature in the refrigerator. **1** is the warmest setting; higher numbers are colder settings with **7** being the coldest setting. The typical setting is **3**.

Allow 24 hours for the refrigerator to reach the desired temperature. If you want a colder or warmer temperature, move the dial one setting at a time. Moving the control to **0** stops cooling but does not turn off the power to the refrigerator. Setting the control too high may cause freezing in the refrigerator depending on the room temperature.

#### **How To Test Temperatures**

Use the milk test. Place a container of milk on a shelf and check it a day later. If the milk is too warm or too cold, adjust the temperature control.

After changing the control, allow 24 hours for the refrigerator to reach the temperature you have set.

## About the refrigerator features.

### Shelves

To remove a shelf, lift up the back slightly and pull forward.

### Freezer Compartment

This compartment is designed for production of ice cubes and short-term storage of some commercially frozen foods.

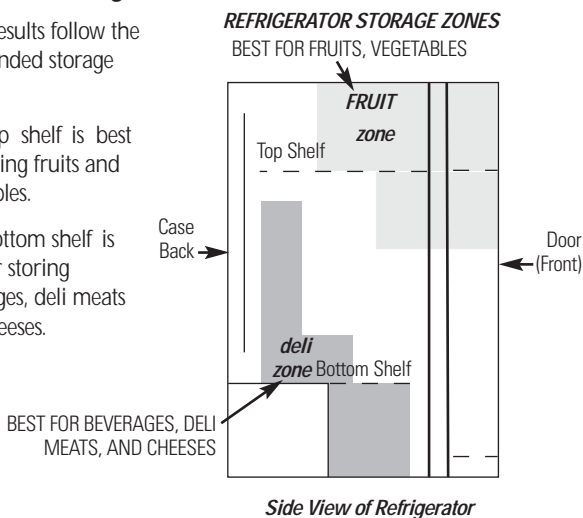
### Door Shelves

Shelves on the door provide convenient storage for frequently used items. The fresh food doors are capable of storing large bottles for your convenience.

### Fresh Food Storage Zones

For best results follow the recommended storage zones:

- The top shelf is best for storing fruits and vegetables.
- The bottom shelf is best for storing beverages, deli meats and cheeses.



# Care and cleaning of the refrigerator.

www.GEAppliances.com

Safety Instructions

Operating Instructions

Installation Instructions

Troubleshooting Tips

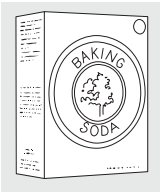
Consumer Support

## Cleaning the Outside

**Keep the outside clean.** Wipe with a clean cloth lightly dampened with kitchen appliance wax or mild liquid dish detergent. Dry and polish with a clean, soft cloth.

Do not wipe the refrigerator with a soiled dish cloth or wet towel. These may leave a residue that can erode the paint. Do not use scouring pads, powdered cleaners, bleach or cleaners containing bleach because these products can scratch and weaken the paint finish.

**Protect the paint finish.** The finish on the outside of the refrigerator is a high quality, baked-on paint finish. With proper care, it will stay new-looking and rust-free for years. Apply a coat of kitchen/appliance wax when the refrigerator is new, and then at least twice a year.



## Cleaning the Inside

**To help prevent odors,** leave an open box of baking soda in the refrigerator.

**Unplug the refrigerator before cleaning.** If this is not practical, wring excess moisture out of sponge or cloth when cleaning around the control.

Use warm water and baking soda solution—about a tablespoon (15 ml) of baking soda to a quart (1 liter) of water. This both cleans and neutralizes odors. Rinse and wipe dry.

Other parts of the refrigerator—including door gaskets, fruit and vegetable drawers, and all plastic parts—can be cleaned the same way.

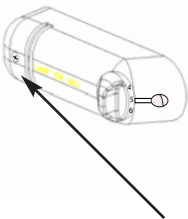
Do not wash any plastic refrigerator parts in the dishwasher.

## Replacing the Light Bulb

Unplug the refrigerator before replacing a burned-out bulb. Setting the controls to **0** does not remove power to the light circuit.

The light bulb is located behind the temperature control housing and is visible through the clear lens.

Using a Philips screwdriver, unscrew the lens and pull horizontally until the lens is removed. Gently unscrew the light bulb and replace with a bulb of 15 watts or less.



## Care and cleaning of the refrigerator.

---

### Defrosting

Defrost whenever frost on the wall of the Freezer compartment becomes 1/4" thick. **Never use a sharp or metallic instrument to remove frost as it may damage the cooling coils.** (A punctured cooling coil will cause serious problems and void the warranty.) We recommend using a plastic scraper. Do not use any electrical device in defrosting your refrigerator.

#### To defrost:

- Remove foods from the Freezer and Fresh Food compartments.
- Set the temperature control dial to **0**.
- Place a towel in the Freezer Compartment to soak up water.

Defrosting usually takes a few hours. To defrost faster, keep the door open. Also using a hair dryer on the **low** setting may speed defrosting.

**Warning: using excessive heat may damage the plastic liner !**

**Do not pour water into the Freezer or Fresh Food compartments.**

#### After defrosting:

- Empty water from the drip tray. Wash the tray with warm water.
- Wipe the Freezer and Fresh Food compartments with a damp cloth.
- Turn the temperature control to the desired setting and return food to the refrigerator.

**NOTE:** If ice buildup is very thick, it may keep the ice tray compartment door from opening or closing completely. Don't try to force it open; after defrosting, the door will open and close easily.



# Care and cleaning of the refrigerator.

[www.GEAppliances.com](http://www.GEAppliances.com)

---

## *Preparing for Vacation*

For long vacations or absences, remove food and unplug the refrigerator. Move the control to the **0** position, and clean the interior with a baking soda solution of one tablespoon (15 ml) of baking soda to one quart (1 liter) of water. Leave the door open.

---

## *Preparing to Move*

Secure all loose items such as shelves and ice trays by taping them securely in place to prevent damage.

Be sure the refrigerator stays in an upright position during moving.

Safety Instructions

Operating Instructions

Installation Instructions

Troubleshooting Tips

Consumer Support

## Preparing to install the refrigerator.

*Read these instructions completely and carefully.*

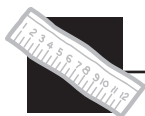


### Refrigerator Location

- Do not install the refrigerator where the temperature will go below 50°F (10°C) because it will not run often enough to maintain proper temperatures.
- Install it on a floor strong enough to support it fully loaded.
- Do not install it closer than 5" (13 cm) next to a range.

*The following applies only to the 2, 3 and 4 Cubic Foot Models:*

- Do not install it in a recessed area.
- Do not build in the refrigerator.



### Clearances

Allow the following clearances for ease of installation and proper air circulation.

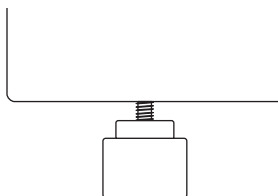
<b>Sides</b>	1/2" (13 mm)
<b>Top</b>	2" (51 mm)
<b>Back</b>	2" (51 mm)*

\* From the rear cabinet surface to the wall

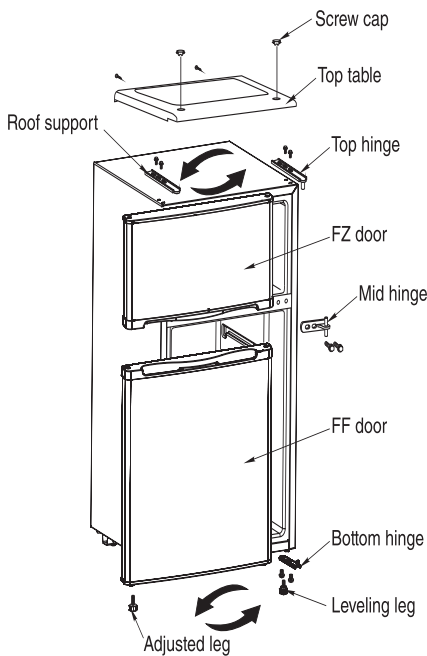
### **Leveling Legs** (on some models)

**Adjustable legs** at the front corners of the refrigerator should be set so the refrigerator is firmly positioned on the floor and the front is raised just enough that the door closes easily when opened about halfway.

**To adjust the leveling legs**, turn the legs *counterclockwise to lower* the refrigerator, *clockwise to raise* it.



## Preparing to install the refrigerator.



### Door Reversal

1. Remove the two screws from under the screw caps located on the top cover.
2. Remove the two screws from the back of the top cover and remove top cover.
3. Remove the top hinge by removing the two screws, as shown.
4. Remove the freezer door by lifting off of the middle hinge.
5. Remove the J-shaped hinge support on the bottom of the freezer door.
6. Install new J-shaped hinge support on the opposite side of the freezer door bottom. The new J-shaped hinge support and mounting screw are located in a zip lock bag that is shipped with the refrigerator.
7. Remove the fresh food door by lifting off the bottom hinge.
8. Remove both adjustable legs.
9. Remove the bottom hinge and re-install on the opposite side of the refrigerator.
10. Re-install the adjustable legs. Insure that the smaller leg is on the same side as the bottom hinge.
11. Place the fresh food door on the bottom hinge.
12. Place the bottom peg of the middle hinge in the fresh food door. Re-install middle hinge. Make sure the fresh food door is aligned with the refrigerator cabinet before tightening screws.
13. Place the freezer door on the top peg of the middle hinge. Place the top hinge peg into the freezer door. Re-install top hinge. Make sure the freezer door is aligned with the refrigerator cabinet before tightening screws..
14. Re-install the top cover with four screws..
15. Replace the screw caps.

# Troubleshooting tips.

www.GEAppliances.com



Save time and money!

<b>Problem</b>	<b>Possible Causes</b>	<b>What To Do</b>
<b>Refrigerator does not operate</b>	Control in <b>0</b> position.	<ul style="list-style-type: none"> <li>• Move the control to a temperature setting.</li> </ul>
	Refrigerator is unplugged.	<ul style="list-style-type: none"> <li>• Push the plug completely into the outlet.</li> </ul>
	The fuse is blown/circuit breaker is tripped.	<ul style="list-style-type: none"> <li>• Replace fuse or reset the breaker.</li> </ul>
<b>Vibration or rattling (slight vibration is normal)</b>	Front leveling legs (on some models) need adjusting.	<ul style="list-style-type: none"> <li>• See Leveling Legs.</li> </ul>
	Refrigerator is on an uneven surface.	<ul style="list-style-type: none"> <li>• Use shims to level the refrigerator.</li> </ul>
<b>Motor operates for long periods or cycles</b>	Normal when refrigerator is first plugged in.	<ul style="list-style-type: none"> <li>• Wait 24 hours for the refrigerator to completely cool down.</li> </ul>
	Often occurs when large amounts of food are placed in refrigerator.	<ul style="list-style-type: none"> <li>• This is normal.</li> </ul>
	Door left open.	<ul style="list-style-type: none"> <li>• Check to see if package is holding door open.</li> </ul>
	Hot weather or frequent door openings.	<ul style="list-style-type: none"> <li>• This is normal.</li> </ul>
	Temperature control set at the coldest setting.	<ul style="list-style-type: none"> <li>• See About the control.</li> </ul>
	Not enough clearance from the wall.	<ul style="list-style-type: none"> <li>• See Clearances in Preparing to install the refrigerator.</li> </ul>

## Troubleshooting tips.



Save time and money!

<i>Problem</i>	<i>Possible Causes</i>	<i>What To Do</i>
<i>Fresh Food/Freezer too warm</i>	Temperature control not set cold enough.	<ul style="list-style-type: none"> <li>• See About the control.</li> </ul> <b>Note: Changing the temperature control will change the temperatures of both the Fresh food and Freezer compartments.</b>
	Warm weather or frequent door openings.	<ul style="list-style-type: none"> <li>• Set the temperature control one step colder. See About the control.</li> </ul>
	Door left open.	<ul style="list-style-type: none"> <li>• Check to see if package is holding door open.</li> </ul>
	Cabinet sides are warm	<ul style="list-style-type: none"> <li>• This is normal for a hot wall type condenser.</li> </ul>
<i>Refrigerator has odor</i>	Ice/Frost build up	<ul style="list-style-type: none"> <li>• See Care and Cleaning</li> </ul>
	Foods transmitting odor to refrigerator.	<ul style="list-style-type: none"> <li>• Foods with strong odors should be tightly wrapped.</li> <li>• Keep an open box of baking soda in the refrigerator; replace every three months.</li> </ul>
	Interior needs cleaning.	<ul style="list-style-type: none"> <li>• See Care and cleaning.</li> </ul>
<i>Moisture forms on outside of refrigerator</i>	Not unusual during periods of high humidity.	<ul style="list-style-type: none"> <li>• Wipe surface dry.</li> </ul>
<i>Moisture collects inside (in humid weather, air carries moisture into refrigerator when door is opened)</i>	Too frequent or too long door openings.	
<i>Fresh Food/Freezer too cold</i>	Temperature control set too cold.	<ul style="list-style-type: none"> <li>• See About the control.</li> </ul> <b>Note: Changing the temperature control will change the temperatures of both the Fresh food and Freezer compartments.</b>

# GE Refrigerator

## One-Year Limited Warranty.



Staple your receipt here.

Proof of the original purchase date is needed to make a warranty claim.

### For The Period Of:

#### One Year

From the date of the original purchase

### What GE Will Provide:

**Replacement unit** for any product which fails due to a defect in materials or workmanship. The exchange unit is warranted for the remainder of your product's original one-year warranty period.

### In Order to Make a Warranty Claim:

- Properly pack your unit. We recommend using the original carton and packing materials.
- Return the product to the retail location where it was purchased.
- Include in the package a copy of the sales receipt or other evidence of date of original purchase. Also print your name and address and a description of the defect.

### What GE Will Not Cover:

- Customer instruction. This owner's manual provides information regarding operating instructions and user controls.
- Service trips to your home to teach you how to use the product.
- Improper installation, delivery or maintenance.
- Failure of the product if it is abused, misused, or used for other than the intended purpose or used commercially.
- Loss of food due to spoilage.
- Replacement of house fuses or resetting of circuit breakers.
- Replacement of the light bulbs.
- Damage caused after delivery.
- Damage to the product caused by accident, fire, floods or acts of God.
- Incidental or consequential damage caused by possible defects with this appliance.

This warranty is extended to the original purchaser and any succeeding owner for products purchased for home use within the USA.

Some states do not allow the exclusion or limitation of incidental or consequential damages. This warranty gives you specific legal rights, and you may also have other rights which vary from state to state. To know what your legal rights are, consult your local or state consumer affairs office or your state's Attorney General.

**Exclusion of implied warranties:** Except where prohibited or restricted by law, there are no warranties, whether express, oral or statutory which extend beyond the description on the face hereof, including specifically the implied warranties of merchantability or fitness for a particular purpose.

Warrantor: General Electric Company, Louisville, KY 40225

14

*Notes.*

---

# Consumer Support.

---



## GE Appliances Website

[www.GEAppliances.com](http://www.GEAppliances.com)

Have a question or need assistance with your appliance? Try the GE Appliances Website 24 hours a day, any day of the year! For greater convenience and faster service, you can now download Owner's Manuals, order parts or order catalogs on-line. You can also "Ask Our Team of Experts™" your questions, and so much more...



## Real Life Design Studio

[www.GEAppliances.com](http://www.GEAppliances.com)

GE supports the Universal Design concept—products, services and environments that can be used by people of all ages, sizes and capabilities. We recognize the need to design for a wide range of physical and mental abilities and impairments. For details of GE's Universal Design applications, including kitchen design ideas for people with disabilities, check out our Website today. For the hearing impaired, please call 800.TDD.GEAC (800.833.4322).



## Parts and Accessories

[www.GEAppliances.com](http://www.GEAppliances.com)

Individuals qualified to service their own appliances can have parts or accessories sent directly to their homes (VISA, MasterCard and Discover cards are accepted). Order on-line today, 24 hours every day or by phone at 800.626.2002 during normal business hours.

***Instructions contained in this manual cover procedures to be performed by any user. GE does not support any servicing of the refrigerator.***



## Contact Us

[www.GEAppliances.com](http://www.GEAppliances.com)

If you are not satisfied with the service you receive on your GE product, contact us on our Website with all the details including your phone number, or write to:  
General Manager, Customer Relations  
GE Appliances, Appliance Park  
Louisville, KY 40225



## Free Manuals Download Website

<http://myh66.com>

<http://usermanuals.us>

<http://www.somanuals.com>

<http://www.4manuals.cc>

<http://www.manual-lib.com>

<http://www.404manual.com>

<http://www.luxmanual.com>

<http://aubethermostatmanual.com>

Golf course search by state

<http://golfingnear.com>

Email search by domain

<http://emailbydomain.com>

Auto manuals search

<http://auto.somanuals.com>

TV manuals search

<http://tv.somanuals.com>