

Xtreme Mix™

Plural-Component Sprayers



Built for the demanding protective coatings market

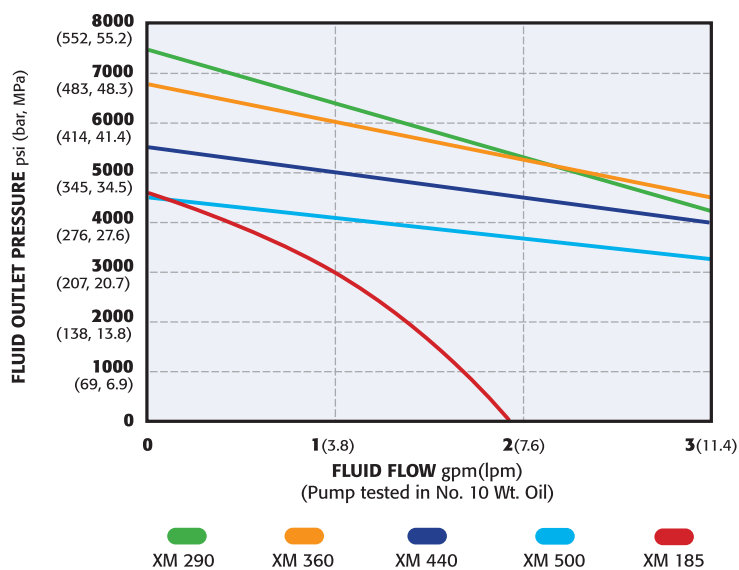
- Sprays tough, 100% solids coatings
- Easily sprays materials with short pot lives
- Remote manifold keeps materials separated until needed at the gun
- Manifold reduces waste and improves productivity
- Portable and simple-to-use
- Durable, dependable and built to last

Outperforms All Other Sprayers on the Market.

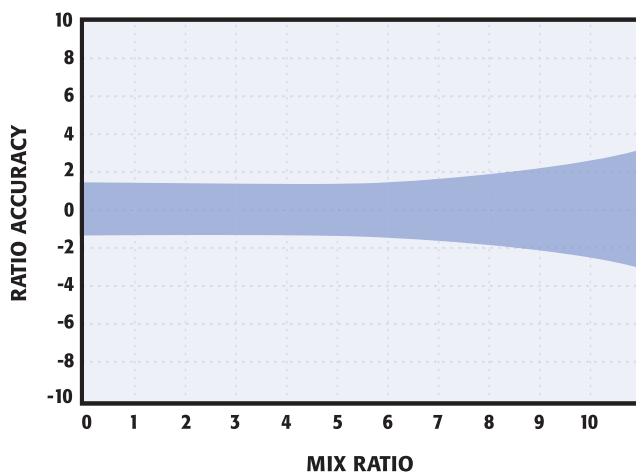
Xtreme Mix Selection Guide

Model	Maximum Working Pressure	Flow Rate @ 1:1 Ratio and 40 cpm	Flow Rate @ 4:1 Ratio and 40 cpm	Flow Rate @ 10:1 Ratio and 40 cpm	Flow Rates per cycle
Xtreme Mix 185	4700 psi (324 bar, 32.4 MPa)	1.0 gpm (4.0 lpm)	0.625 gpm (2.37 lpm)	0.55 gpm (2.08 lpm)	185 cc
Xtreme Mix 290	7250 psi (500 bar, 50.0 MPa)	3.1 gpm (11.7 lpm)	1.9 gpm (7.2 lpm)	1.7 gpm (6.4 lpm)	290 cc
Xtreme Mix 360	6800 psi (469 bar, 46.9 MPa)	3.9 gpm (14.8 lpm)	2.4 gpm (9.1 lpm)	2.1 gpm (7.9 lpm)	360 cc
Xtreme Mix 440	5600 psi (386 bar, 38.6 MPa)	4.5 gpm (17.0 lpm)	2.8 gpm (10.6 lpm)	2.5 gpm (9.5 lpm)	440 cc
Xtreme Mix 500	4500 psi (310 bar, 31.0 MPa)	5.3 gpm (20.1 lpm)	3.3 gpm (12.5 lpm)	2.9 gpm (11.0 lpm)	500 cc

Performance Chart



Xtreme Mix Ratio Accuracy*



* Tested with hydraulic oil in laboratory conditions

Selecting Your Xtreme Mix Sprayer

The Xtreme Mix provides precise and reliable electronic proportioning for all spray technologies. Use the pressure flow curves at the left to determine which Xtreme Mix sprayer is right for you.

HOW TO USE THIS CHART:

- Step 1:** Locate the required fluid flow along the bottom axis of the chart.
- Step 2:** Follow vertical line until it intersects with the solid curve.
- Step 3:** Follow curve to left axis to determine fluid outlet pressure.

On-Ratio Performance

Automatically maintain the mixing ratio within predefined tolerance limits, down to $\pm 1\%$. If accuracy exceeds $\pm 5\%$, the system will stop production, preventing any off-ratio material from reaching your project, virtually eliminating expensive re-work, saving both time and materials.

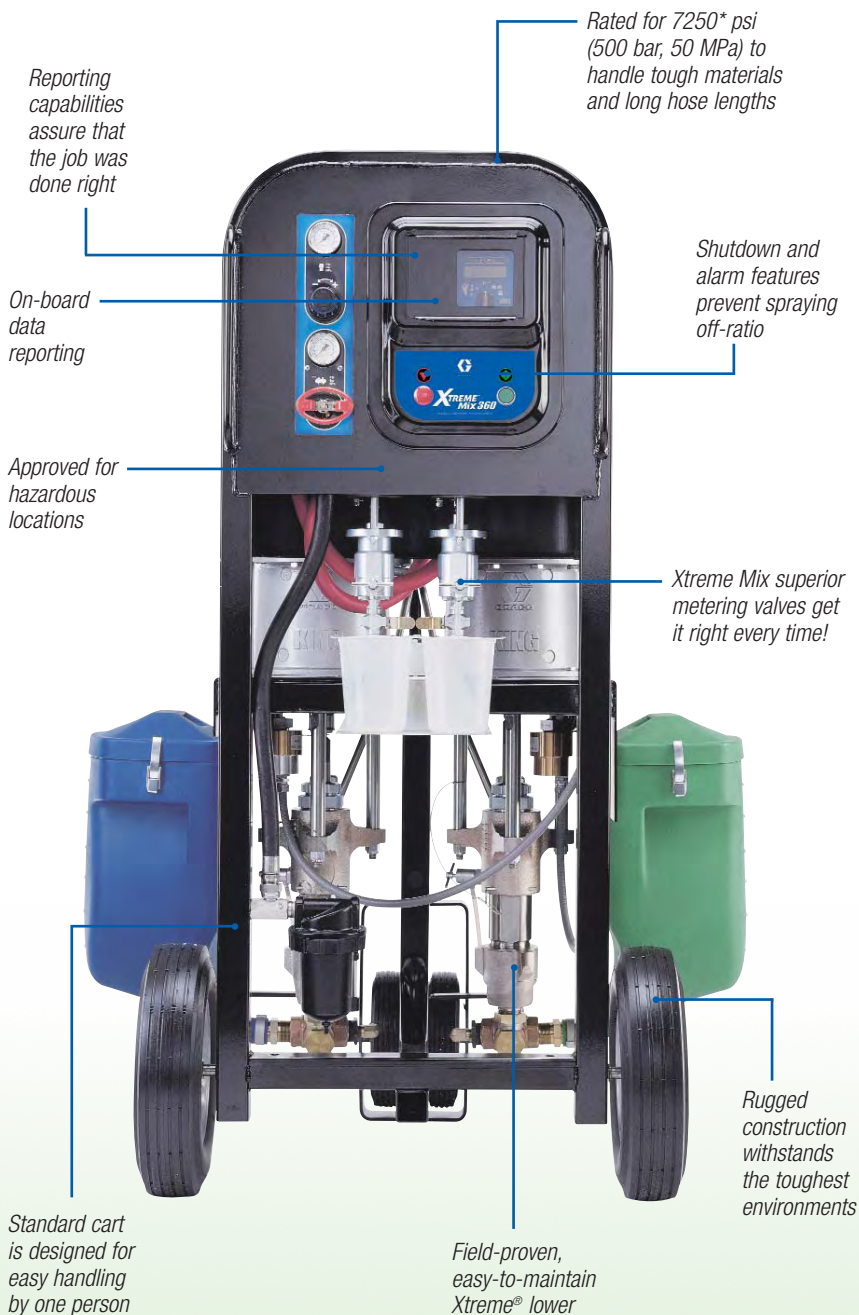
Data Reporting

Get the information you need to make sure each job is up to high quality standards. Xtreme Mix's Data Reporting capability records material usage, confirms on-ratio performance and includes date and time stamps for easy job tracking.

Get the Job Done Right...Every Time.

Packed With Features You Can Depend On!

The combination of our SmartPump™ metering system, on-board diagnostics and auto shutdown helps prevent off-ratio spraying. Xtreme Mix offers even more with jobsite portability, on-demand mixing, and built-in data reporting. With superior technology and advanced features, Graco's Xtreme Mix airless sprayers outperform all other plural-component sprayers on the market.

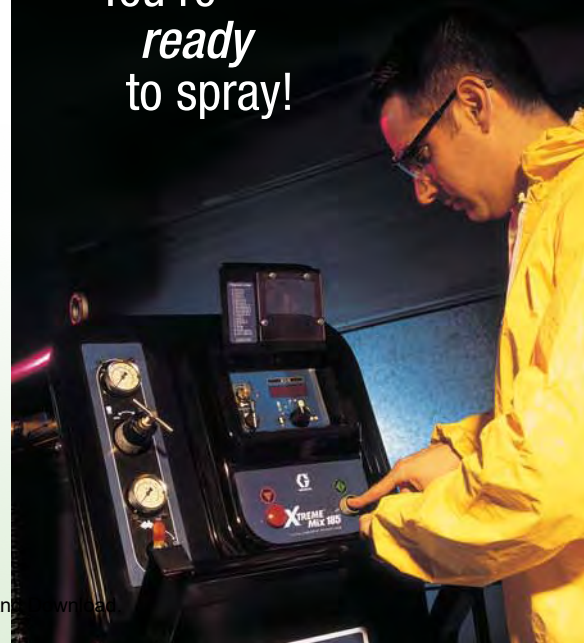


5 SIMPLE STEPS to Set up and Spray



- 1 Turn on air supply
- 2 Turn selector to PRIME to load each pump
- 3 Turn selector to SPRAY
- 4 Set desired ratio
- 5 Press the green start button

You're ready to spray!



Technical Specifications

Mix ratio range	0.1-1 to 10:1 (in 0.1 increments)
Air supply pressure range*	50 to 110 psi (3.5 to 7.6 bar, 0.35 to 0.76 MPa)
Fluid filtration	60 mesh (238 micron standard)
Temperature range	
Operating	32 to 130°F (0 to 54°C)
Storage	30 to 160°F (-1 to 71°C)
Sound pressure	98 dBA at 100 psi (7 bar, 0.7 MPa)
Wetted parts	
Pumps	Carbon steel, alloy steel, 303, 440 and 17-4ph grades stainless steel, zinc and nickel plating, ductile iron, tungsten carbide, PTFE, leather
Metering valves	Carbon steel, zinc plating, carbide, polyethylene, leather
Manifold	Stainless steel (302, 303, 416), tungsten carbide with nickel binder, zinc plated carbon steel, nylon 6/6, PTFE, 440 SS, copper, polyethylene
Mixer	Stainless steel
Spray gun	17-4ph stainless steel, 4140 alloy steel, aluminum
Fluid viscosity range	200-20,000 cps (heavier viscosities can be mixed with use of optional heaters, heated hoses and hardware)
Maximum air consumption at 100 psi (7 bar, 0.7 MPa)	
Xtreme Mix 500 (45:1)	110 scfm (3.1 m3/min)
Xtreme Mix 440 (56:1)	125 scfm (3.5 m3/min)
Xtreme Mix 360 (68:1)	155 scfm (4.4 m3/min)
Xtreme Mix 290 (80:1)	180 scfm (5.1 m3/min)
Xtreme Mix 185 (45:1)	57 scfm (1.6 m3/min)
Communications	
PC	RS-232
Communication protocol	9600 baud, 8 bits, no parity

Dimensions - cart models without hoppers

Xtreme Mix 290, 360, 440, 500	44 L x 33 H x 64 W in (113 x 84 x 164 cm)
Xtreme Mix 185	44 L x 60 H x 30 W in (112 x 152 x 76 cm)

Weight

Xtreme Mix 290, 360, 440, 500	
Cart unit without hose and gun	625 lb (283.5 kg)
Xtreme Mix 185	
Cart unit with heaters	475 lb (215 kg)
Cart unit without heaters	350 lb (159 kg)

Instruction Manuals - Operation**

Xtreme Mix 290, 360, 440, 500	
309535	English
309545	Spanish
309536	French
Xtreme Mix 185	
310665	English

Instruction Manuals - Repair

Xtreme Mix 290, 360, 440, 500	
309518	English
309566	Spanish
309564	French
Xtreme Mix 185	
310666	English

* Recommended that you optimize static mixer when low air pressure range is used.

** Other languages are available, see www.graco.com for more information.

Ordering Information

Xtreme Mix Package Configurations



All units include hoppers, 50 ft (15.3 m) hose, 6 ft (1.8 m) whip hose and XTR spray gun. All gallons per minute displayed at 40 cpm @ 1:1 ratio.

Hazardous Location Proportioners

233855	Xtreme Mix 500, standard motor, 45:1, 5.3 gpm (20.1 lpm)
233859	Xtreme Mix 500, quiet motor, 45:1, 5.3 gpm (20.1 lpm)
233856	Xtreme Mix 440, standard motor, 56:1, 4.5 gpm (17 lpm)
233860	Xtreme Mix 440, quiet motor, 56:1, 4.5 gpm (17 lpm)
233857	Xtreme Mix 360, standard motor, 68:1, 3.9 gpm (14.8 lpm)
233861	Xtreme Mix 360, quiet motor, 68:1, 3.9 gpm (14.8 lpm)
233858	Xtreme Mix 290, standard motor, 80:1, 3.1 gpm (11.7 lpm)
233862	Xtreme Mix 290, quiet motor, 80:1, 3.1 gpm (11.7 lpm)
234616	Xtreme Mix 185, 47:1, 1 gpm (4 lpm)
234838	Xtreme Mix 185, with (2) VISCON HP (240V) heaters, 47:1, 1 gpm (4 lpm)
234840	Xtreme Mix 185 with (2) VISCON HP (480V) heaters, 47:1, 1 gpm (4 lpm)



Non-Hazardous Location Proportioners

233863	Xtreme Mix 500, standard motor, 45:1, 5.3 gpm (20.1 lpm)
233867	Xtreme Mix 500, quiet motor, 45:1, 5.3 gpm (20.1 lpm)
233864	Xtreme Mix 440, standard motor, 56:1, 4.5 gpm (17 lpm)
233868	Xtreme Mix 440, quiet motor, 56:1, 4.5 gpm (17 lpm)
233865	Xtreme Mix 360, standard motor, 68:1, 3.9 gpm (14.8 lpm)
233869	Xtreme Mix 360, quiet motor, 68:1, 3.9 gpm (14.8 lpm)
233866	Xtreme Mix 290, standard motor, 80:1, 3.1 gpm (11.7 lpm)
233870	Xtreme Mix 290, quiet motor, 80:1, 3.1 gpm (11.7 lpm)
234617	Xtreme Mix 185, 47:1, 1 gpm (4 lpm)
234839	Xtreme Mix 185 with (2) VISCON HP (240V) heaters, 47:1, 1 gpm (4 lpm)
234841	Xtreme Mix 185 with (2) VISCON HP (480V) heaters, 47:1, 1 gpm (4 lpm)

Xtreme Mix Proportioners Set-Up for Pressure Feeding

No hoppers, hose or gun; requires mixing manifold

248842	Xtreme Mix 360, standard motor, 68:1, 3.9 gpm (14.8 lpm)
--------	--

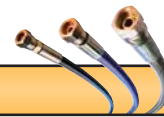
Wall mount units, no hoppers

234614	Xtreme Mix 185, hazardous locations, 47:1, 1 gpm (4.0 lpm)
234615	Xtreme Mix 185, non-hazardous locations, 47:1, 1 gpm (4.0 lpm)

Xtreme Mix Without Built-in Filters for Hazardous Locations

248831	Xtreme Mix 290, standard motor, 80:1, 3.1 gpm (11.7 lpm)
248832	Xtreme Mix 360, standard motor, 68:1, 3.9 gpm (14.8 lpm)
248833	Xtreme Mix 440, standard motor, 56:1, 4.5 gpm (17 lpm)
248834	Xtreme Mix 500, standard motor, 45:1, 5.3 gpm (20.1 lpm)

Accessories



Data Reporting Kits

Kits include cable and software

- 246322 Data reporting kit, Xtreme Mix 290, 360, 440, 500
- 248404 Data reporting kit, Xtreme Mix 185

Guns and Gun Accessories

Maximum working pressure: 7250 psi (500 bar, 50.0 MPa)

- 246294 10 in (254 mm) gun extension
- 246295 15 in (380 mm) gun extension
- 246296 18 in (457 mm) gun extension
- 246297 180° spray nozzle

XTR™-5 Airless Spray Gun

Maximum working pressure: 5000 psi (345 bar, 34.5 MPa)

- XTR500 1" round handle, four-finger trigger, no tip
- XTR501 1" round handle, four-finger trigger, flat tip
- XTR502 Oval insulated handle, four-finger trigger, XHD RAC tip
- XTR503 Oval insulated handle, two-finger trigger, XHD RAC tip
- XTR504 1" round handle, four-finger trigger, XHD RAC tip
- XTR505 1" round handle, two-finger trigger, XHD RAC tip

XTR-7 Airless Spray Gun

Maximum working pressure: 7250 psi (500 bar, 50.0 MPa)

- XTR700 Round handle, four-finger trigger, no tip
- XTR701 Round handle, four-finger trigger, flat tip
- XTR702 Oval insulated handle, four-finger trigger, XHD RAC tip
- XTR703 Oval insulated handle, two-finger trigger, XHD RAC tip
- XTR704 Round handle, four-finger trigger, XHD RAC tip
- XTR705 Round handle, two-finger trigger, XHD RAC tip

Heated Hose Controller - for non-hazardous locations

- 248921 Low voltage controller, requires FTS; includes p/n 15C517
- 248926 Fluid temperature sensor (FTS) (other ratios)

Heated Hose - 5000 psi (345 bar, 34.5 MPa), 50 ft (15 m)

For non-hazardous locations

- 15E750 Hose A, ID 1/4 (6.3 mm)
- 15E751 Hose A, ID 3/8 (9.5 mm)
- 15E752 Hose B, ID 3/8 (9.5 mm)
- 248907 Hose Set, ID 1/4(A) x 3/8(B) (6.3 x 9.5 mm)
- 248908 Hose Set, ID 3/8(A) x 3/8(B) (9.5 x 9.5 mm)

Fittings

- 15B729 Coupling, 7250 psi (500 bar, 50.0 MPa) 3/8 npt(f) x 3/8 npsm(m)
- 150287 Coupling, 7250 psi (500 bar, 50.0 MPa) 3/8 npt(f) x 1/4 npt(m)
- 214925 Swivel, 5000 psi (345 bar, 34.5 MPa), 3/8 npt(f) x 1/4 npsm(f)
- 236987 Swivel, 7250 psi (500 bar, 50.0 MPa), 1/4 npsm(m) x 1/4 npsm(f)
- 189018 Swivel, 5800 psi (399 bar, 39.9 MPa), 1/4 npsm(m) x 1/4 npsm(f)
- 156971 Nipple, 7250 psi (500 bar, 50.0 MPa), 1/4 npt x 1/4 npt(mbe)
- 165198 Nipple, 7250 psi (500 bar, 50.0 MPa), 1/4 npt x 3/8 npt(mbe)
- 162449 Nipple, 7250 psi (500 bar, 50.0 MPa), 1/4 npt x 1/2 npt(mbe)
- 159239 Nipple, 7250 psi (500 bar, 50.0 MPa), 3/8 npt x 1/2 npt(mbe)
- 158491 Nipple, 7250 psi (500 bar, 50.0 MPa), 1/2 npt x 1/2 npt(mbe)

Viscon® HP Fluid Heaters

- 245848 Hazardous location, 120 VAC, 2300 watts, 19.2 amps
- 245862 Hazardous location, 200 VAC, 4000 watts, 20 amps
- 245863 Hazardous location, 240 VAC, 4000 watts, 16.7 amps
- 246254 Hazardous location, 380 VAC, 4000 watts, 10.5 amps
- 245864 Hazardous location, 480 VAC, 4000 watts, 8.3 amps
- 245867 Non-hazardous location, 120 VAC, 2300 watts, 19.2 amps
- 245868 Non-hazardous location, 200 VAC, 4000 watts, 20.0 amps
- 245869 Non-hazardous location, 240 VAC, 4000 watts, 16.7 amps
- 246276 Non-hazardous location, 380 VAC, 4000 watts, 10.5 amps
- 245870 Non-hazardous location, 480 VAC, 4000 watts, 8.3 amps

Manifold Accessories

- 234026 Two spray gun manifold with independent solvent flush
- 248874 Manifold, remote mix, no restrictor, bare
- 248923 Manifold, remote mix, with restrictors, skid-mount
- 15E725 Manifold, flow-through non-mixing for use with remote mix manifold

Filter Screens

- 238435 30 mesh (595 micron), 3 pack
- 238437 60 mesh (290 micron), 3 pack
- 238439 100 mesh (149 micron), 3 pack

Kits and Accessories

- 246304 Heater bracket kit for Xtreme Mix 290-500
- 248428 Xtreme Mix 185 heater kit with re-circulation (heater sold separately); includes components needed to add one heater and one re-circulation kit
- 248652 Xtreme Mix 185 re-circulation kit; includes solenoid, dispense valve and hoses needed for one re-circulation setup
- 248440 Xtreme Mix 185 repair kit

Tuff-Stack™ Seal Repair Kits (order two kits per Xtreme Mix)

- 248442 Xtreme Mix 185
- 244900 Xtreme Mix 290
- 244901 Xtreme Mix 360
- 244902 Xtreme Mix 440
- 244903 Xtreme Mix 500

Supply Accessories

- 234017 7.5 gal (28 l) blue fluid tank
- 234097 7.5 gal (28 l) green fluid tank
- 248224 2.5 gal (9.5 l) ISO supply kit
- 248225 5 gal (19 l) ISO supply kit

Other Accessories

- 511352 Static mixer
- 246078 Scuff guard, 50 ft (15.2 m) braided polyethylene mesh
- 246456 Scuff guard, 50 ft (15.2 m) polyethylene bag
- 206995 Graco throat seal liquid (TSL), 1 qt (0.9 l)
- 206996 Graco throat seal liquid (TSL), 1 gal (3.8 l)

Xtreme-Duty 4500 psi (310 bar) High Pressure Hose

Part #	Length	Hose Diameter	Female NPSM
H42503	3 ft (0.9 m)	1/4 in (6.4 mm)	1/4 in
H42506	6 ft (1.8 m)	1/4 in (6.4 mm)	1/4 in
H42510	10 ft (3.0 m)	1/4 in (6.4 mm)	1/4 in
H42525	25 ft (7.6 m)	1/4 in (6.4 mm)	1/4 in
H42550	50 ft (15.2 m)	1/4 in (6.4 mm)	1/4 in
H4251X	100 ft (30.5 m)	1/4 in (6.4 mm)	1/4 in
H43803	3 ft (0.9 m)	3/8 in (9.5 mm)	3/8 in
H43806	6 ft (1.8 m)	3/8 in (9.5 mm)	3/8 in
H43810	10 ft (3.0 m)	3/8 in (9.5 mm)	3/8 in
H43825	25 ft (7.6 m)	3/8 in (9.5 mm)	3/8 in
H43850	50 ft (15.2 m)	3/8 in (9.5 mm)	3/8 in
H4381X	100 ft (30.5 m)	3/8 in (9.5 mm)	3/8 in
H45010	10 ft (3.0 m)	1/2 in (12.7 mm)	1/2 in
H45025	25 ft (7.6 m)	1/2 in (12.7 mm)	1/2 in
H45050	50 ft (15.2 m)	1/2 in (12.7 mm)	1/2 in
H4501X	100 ft (30.5 m)	1/2 in (12.7 mm)	1/2 in

Xtreme-Duty 5600 psi (386 bar) High Pressure Hose

Part #	Length	Hose Diameter	Female NPSM
H52503	3 ft (0.9 m)	1/4 in (6.4 mm)	1/4 in
H52506	6 ft (1.8 m)	1/4 in (6.4 mm)	1/4 in
H52510	10 ft (3.0 m)	1/4 in (6.4 mm)	1/4 in
H52525	25 ft (7.6 m)	1/4 in (6.4 mm)	1/4 in
H52550	50 ft (15.2 m)	1/4 in (6.4 mm)	1/4 in
H5251X	100 ft (30.5 m)	1/4 in (6.4 mm)	1/4 in
H53803	3 ft (0.9 m)	3/8 in (9.5 mm)	3/8 in
H53806	6 ft (1.8 m)	3/8 in (9.5 mm)	3/8 in
H53810	10 ft (3.0 m)	3/8 in (9.5 mm)	3/8 in
H53825	25 ft (7.6 m)	3/8 in (9.5 mm)	3/8 in
H53850	50 ft (15.2 m)	3/8 in (9.5 mm)	3/8 in
H5381X	100 ft (30.5 m)	3/8 in (9.5 mm)	3/8 in
H55010	10 ft (3.0 m)	1/2 in (12.7 mm)	1/2 in
H55025	25 ft (7.6 m)	1/2 in (12.7 mm)	1/2 in
H55050	50 ft (15.2 m)	1/2 in (12.7 mm)	1/2 in
H5501X	100 ft (30.5 m)	1/2 in (12.7 mm)	1/2 in

Xtreme-Duty 7250 psi (500 bar) High Pressure Hose

Part #	Length	Hose Diameter	Female NPSM
H72503	3 ft (0.9 m)	1/4 in (6.4 mm)	1/4 in
H72506	6 ft (1.8 m)	1/4 in (6.4 mm)	1/4 in
H72510	10 ft (3.0 m)	1/4 in (6.4 mm)	1/4 in
H72525	25 ft (7.6 m)	1/4 in (6.4 mm)	1/4 in
H72550	50 ft (15.2 m)	1/4 in (6.4 mm)	1/4 in
H7251X	100 ft (30.5 m)	1/4 in (6.4 mm)	1/4 in
H73803	3 ft (0.9 m)	3/8 in (9.5 mm)	3/8 in
H73806	6 ft (1.8 m)	3/8 in (9.5 mm)	3/8 in
H73810	10 ft (3.0 m)	3/8 in (9.5 mm)	3/8 in
H73825	25 ft (7.6 m)	3/8 in (9.5 mm)	3/8 in
H73850	50 ft (15.2 m)	3/8 in (9.5 mm)	3/8 in
H7381X	100 ft (30.5 m)	3/8 in (9.5 mm)	3/8 in
H75010	10 ft (3.0 m)	1/2 in (12.7 mm)	1/2 in
H75025	25 ft (7.6 m)	1/2 in (12.7 mm)	1/2 in
H75050	50 ft (15.2 m)	1/2 in (12.7 mm)	1/2 in
H7501X	100 ft (30.5 m)	1/2 in (12.7 mm)	1/2 in



ABOUT GRACO

PROVEN QUALITY. LEADING TECHNOLOGY.

Founded in 1926, Graco is a world leader in fluid handling systems and components. Graco products move, measure, control, dispense and apply a wide range of fluids and viscous materials used in vehicle lubrication, commercial and industrial settings.

The company's success is based on its unwavering commitment to technical excellence, world-class manufacturing and unparalleled customer service. Working closely with qualified distributors, Graco offers systems, products and technology that set the quality standard in a wide range of fluid handling solutions. Graco provides equipment for spray finishing, protective coating, paint circulation, lubrication, and dispensing sealants and adhesives, along with power application equipment for the contractor industry. Graco's ongoing investment in fluid management and control will continue to provide innovative solutions to a diverse global market.

GRACO LOCATIONS

MAILING ADDRESS

P.O. Box 1441
Minneapolis, MN 55440-1441
Tel: 612-623-6000
Fax: 612-623-6777

AMERICAS

MINNESOTA

Worldwide Headquarters
Graco Inc.
88-11th Avenue N.E.
Minneapolis, MN 55413

EUROPE

BELGIUM

European Headquarters
Graco N.V.
Industrieterrein-Oude Bunders
Slakweidestraat 31
3630 Maasmechelen,
Belgium
Tel: 32 89 770 700
Fax: 32 89 770 777

ASIA PACIFIC

AUSTRALIA

Graco Australia Pty Ltd
Suite 17, 2 Enterprise Drive
Bundoora, Victoria 3083
Australia
Tel: 61 3 9467 8558
Fax: 61 3 9467 8559

CHINA

Graco Hong Kong Ltd.
Shanghai Representative Office
Room 118 1st Floor
No.2 Xin Yuan Building
No.509 Cao Bao Road
Shanghai, 200233
The People's Republic of China
Tel: 86 21 649 50088
Fax: 86 21 649 50077

INDIA

Graco Hong Kong Ltd.
India Liaison Office
Room 432, Augusta Point
Regus Business Centre 53
Gold Course Road
Gurgaon, Haryana
India 122001
Tel: 91 124 435 4208
Fax: 91 124 435 4001

JAPAN

Graco K.K.
1-27-12 Hayabuchi
Tsuzuki-ku
Yokohama City, Japan 2240025
Tel: 81 45 593 7300
Fax: 81 45 593 7301

KOREA

Graco Korea Inc.
Shinhan Bank Building
4th Floor #1599
Gwanyang-Dong, Dongan-Ku,
Anyang-si Korea 431-060
Tel: 82 31 476 9400
Fax: 82 31 476 9801

SALES/DISTRIBUTION/SERVICE

Call today for product information or to request a demonstration.

877-84GRACO (1-877-844-7226) or visit us at www.graco.com.

Graco Inc. is registered to I.S. EN ISO 9001

North America
Customer Service
800-328-0211
FAX 877-340-6427

©2008, 2009 Graco Inc. Form No. 300612 Rev. G 4/09 All written and visual data contained in this document are based on the latest product information available at the time of publication. Graco reserves the right to make changes at any time without notice. All other brand names or marks are used for identification purposes and are trademarks of their respective owners.

Free Manuals Download Website

<http://myh66.com>

<http://usermanuals.us>

<http://www.somanuals.com>

<http://www.4manuals.cc>

<http://www.manual-lib.com>

<http://www.404manual.com>

<http://www.luxmanual.com>

<http://aubethermostatmanual.com>

Golf course search by state

<http://golfingnear.com>

Email search by domain

<http://emailbydomain.com>

Auto manuals search

<http://auto.somanuals.com>

TV manuals search

<http://tv.somanuals.com>