



IBR2807DPBLU

### Features

- Apple Certified Dock for iPod charges and plays your iPod, iPod nano, iPod mini, iPod photo, and iPod with video
- AM/FM Radio with Digital Display
- Audio/Video Output

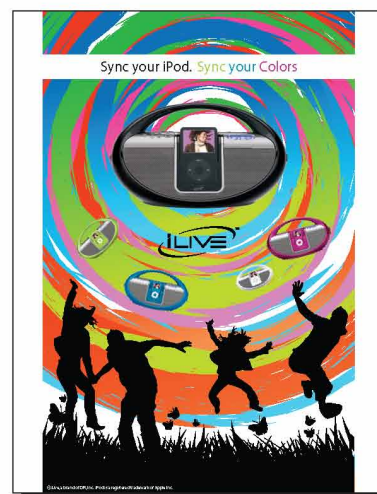
### Benefits

The IBR2807DP is a great product for convenience. It has everything you need to play your iPod. You can easily move this player to any room of the house to entertain you while you work or play.

### Packaging



### Marketing Materials





## IBR2807DPBLU

### Specifications

#### \* Docking Station for iPod®

- Certified iPod Connector installed for iPod docking
- Recharge Circuit for iPod/Mini/Nano/Photo/Video
- Includes docking brackets to fit iPod players
- Controls connected iPod players

#### \* AM/FM Radio

- Digital Readout

#### \* Blue Backlit LCD Display

#### \* Digital Clock

#### \* Dual Speakers built in

#### \* Jacks

- Video-Out Jack for iPod Photo & Video versions, RCA type
- Aux-In Jack, 3.5mm type
- Aux-Out Jack, 3.5mm type

#### \* AC/DC Dual Power

- AC: Detachable AC Line Cord
- DC: Uses 8-"C" size Batteries, (not included)

#### \* Includes

- Detachable AC Cord
- Brackets for iPod Players

#### \* For USA: ETL Listed

#### \* For Canada: CETL Listed

### PORTABLE MUSIC SYSTEM WITH DOCKING & RECHARGING FOR IPOD

#### ACTUAL

<b>Master Carton:</b>	Dim:13.5Lx7.25Wx15.75H in	Qty: 2
	Weight: 8.9lbs.	MC UCC-14 code: 50-047323-238067
	CuFt: 0.8921	
<b>Inner Carton:</b>		Qty: -
		Inner UCC-14 code: -
<b>Gift Box:</b>	Dim: 13Lx6.5Wx7.5H in	Gift Box
	Weight: 4lbs.	UPC: 047323-238062
<b>Item:</b>	Dim: 11.89Lx5.5Wx7.2H in	Weight: 2.86lbs.
<b>General:</b>	Color: BLUE	Duty/HTS: 0% / 8527.13.6080
	FOB:HONG KONG	Pack: Gift Pack
	MOQ/CFS: 3000 / \$0.39	
<b>Contents:</b>	Electric:25%	Plastic: 70%
	Wood: -%	Glass: -%
	Metal: 5%	
<b>Warehouse:</b>	Ctn/Layer: 15	Layers/Skid: 5
	Ctns/Skid: 75	Units/Skid: 150
	Skids/Truck(48Ft): 28	Skids/Truck(53Ft): 30
	Units/Truck(48Ft): 4200	Units/Truck(53Ft): 4500
	Skid Size(L/W): 48/40in.	Skid UCC-14 code: -
<b>Container:</b>	20' Cont Qty:2138	40' Std. Qty:4500
	40' HQ Qty:5372	

All dimensions in inches; all weight in pounds unless otherwise noted. All dimensions/weights approximate only. Specifications and information is subject to change without prior notice. Pictures are for reference only - color representation of unit can change. Home Music System and Home Theater - Total Power output is the calculation of the Amplifier Power and the speaker rating. The information contained in this document sheet is confidential and cannot be reproduced, transmitted, copied or distributed without written permission from DPI, INC. CFS Charges applies to all models where MOQ is smaller than a full 40' Ct. Qty. Lead Time needs to be confirmed by DPI prior to order placement.

\*Disclaimers: \*This Set-up Sheet is an advertisement of products available for sale by DPI as of the date of this publication. It does not constitute an offer to sell any product or products. \*DPI specifically reserves the right to limit or allocate quantities of all items identified in this Set-up sheet as it determines in its sole discretion. Certain items listed may not be available for purchase at all times. The description and other information contained in this Set-up sheet are, to the best of DPI's knowledge, accurate as of the date of publishing. DPI is not responsible for any differences or discrepancies contained in this Set-up sheet. All photographic, clerical, typographical, and printing errors are subject to correction. \*DPI assumes no liability associated with product usage. The buyer is liable and responsible for any loss, damage, or expense of any kind, arising from the use or misuse of the products contained in this Set-up sheet. \*DPI respects your privacy, and does not sell or exchange customer list or mailing lists to anyone outside DPI

## Free Manuals Download Website

<http://myh66.com>

<http://usermanuals.us>

<http://www.somanuals.com>

<http://www.4manuals.cc>

<http://www.manual-lib.com>

<http://www.404manual.com>

<http://www.luxmanual.com>

<http://aubethermostatmanual.com>

Golf course search by state

<http://golfingnear.com>

Email search by domain

<http://emailbydomain.com>

Auto manuals search

<http://auto.somanuals.com>

TV manuals search

<http://tv.somanuals.com>