



MODEL H6186 3/8" IMPACT WRENCH INSTRUCTION SHEET

⚠ WARNING

	EYE/EAR INJURY HAZARD! Wear safety glasses and hearing protection when using this tool!
	INJURY HAZARD! Always disconnect tool from air to prevent unexpected operation during service!
	DO NOT EXCEED 120 PSI! Personal injury could occur.
	SHATTERING HAZARD! Use sockets rated for impact wrench use only.



Figure 1. Model H6186

The impact wrench **MUST** be regularly lubricated with 3-4 drops of air tool oil directly into the air fitting before each use. For best results, we recommend using an in line filter, lubricator, and regulator, as shown in **Figure 2**.

Specifications

Drive Size	3/8"
No-Load Speed	9,500 RPM
Maximum Torque	190 ft/lb
Air Inlet Size	1/4" NPT
Air Consumption.....	3.8 CFM
Operating Pressure	90 PSI
Maximum Operating Pressure.....	120 PSI
Weight	3.3 lbs

Operation

Install any 3/8" drive socket into your air impact wrench. To change direction, push the valve knob, shown in **Figure 1**, in or out. To adjust the torque setting, turn the valve knob from 0 to 5. Connect to air line regulated at 90 PSI.

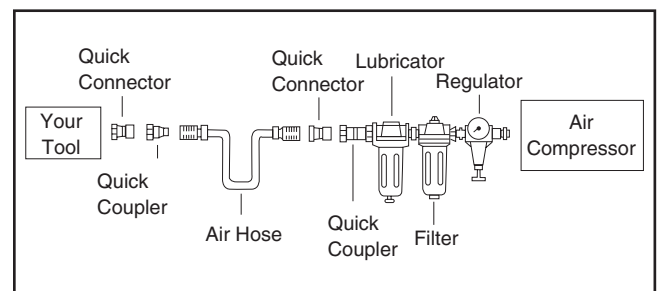


Figure 2. Installing your tool.

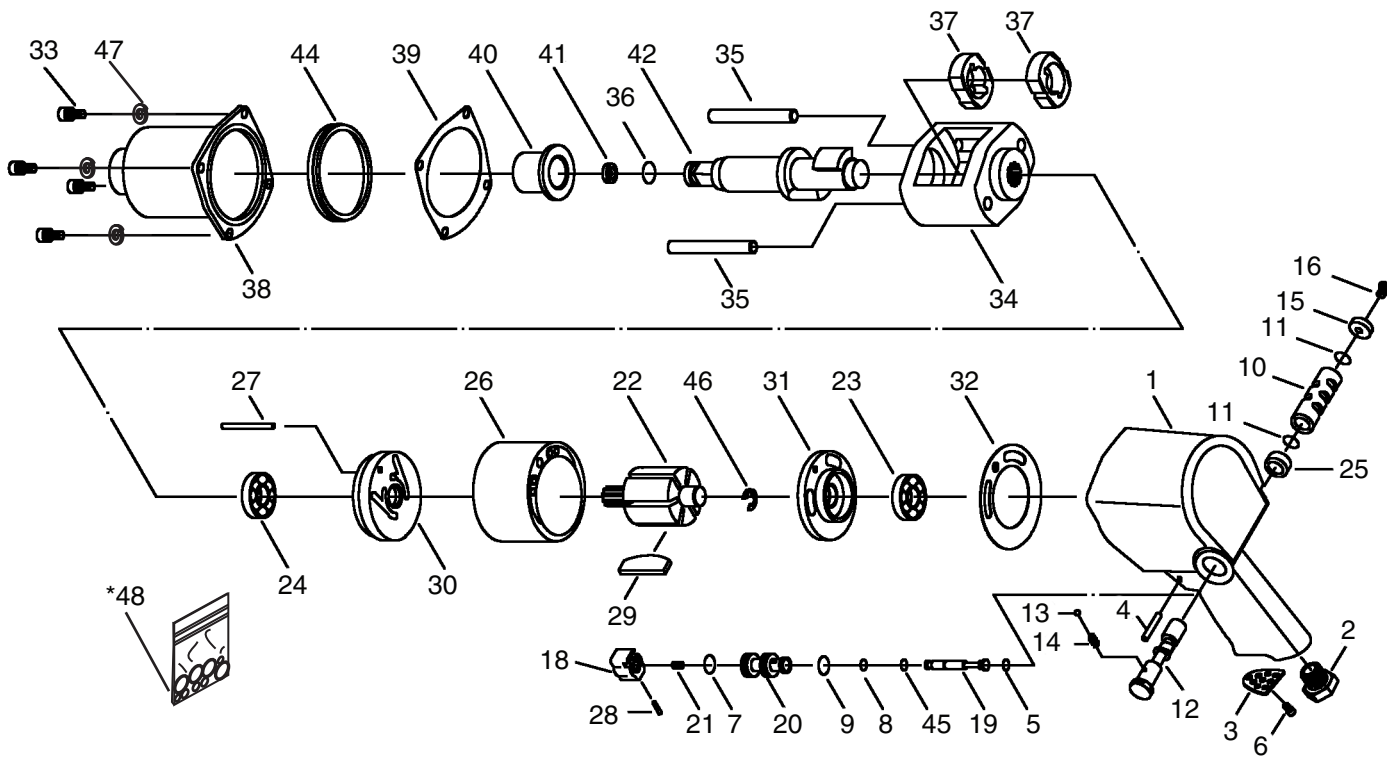
If you need help with your new pneumatic tool, call our Tech Support at: (570) 546-9663.

COPYRIGHT © MAY, 2008 BY GRIZZLY INDUSTRIAL, INC.

WARNING: NO PORTION OF THIS MANUAL MAY BE REPRODUCED IN ANY SHAPE OR FORM WITHOUT THE WRITTEN APPROVAL OF GRIZZLY INDUSTRIAL, INC.

#JM10713 PRINTED IN TAIWAN

H6186 Parts Breakdown and List



REF	PART #	DESCRIPTION
1	PH6186001	GUN BODY
2	PH6186002	AIR INLET
3	PH6186003	EXHAUST DEFLECTOR
4	PH6186004	ROLL PIN
5	PH6186005	O-RING
6	PH6186006	SCREW
7	PH6186007	O-RING
8	PH6186008	O-RING
9	PH6186009	O-RING
10	PH6186010	VALVE BUSHING
11	PH6186011	O-RING
12	PH6186012	VALVE KNOB
13	PH6186013	STEEL BALL
14	PH6186014	COMPRESSION SPRING
15	PH6186015	REGULATOR KNOB
16	PH6186016	SCREW
18	PH6186018	TRIGGER
19	PH6186019	VALVE STEM
20	PH6186020	TRIGGER VALVE BUSHING
21	PH6186021	VALVE SPRING
22	PH6186022	ROTOR
23	PH6186023	BALL BEARING
24	PH6186024	BALL BEARING

REF	PART #	DESCRIPTION
25	PH6186025	REGULATOR BUSHING
26	PH6186026	CYLINDER
27	PH6186027	ROLL PIN
28	PH6186028	SET SCREW
29	PH6186029	ROTOR BLADE
30	PH6186030	FRONT END PLATE
31	PH6186031	REAR END PLATE
32	PH6186032	REAR GASKET
33	PH6186033	CAP SCREW
34	PH6186034	HAMMER CAGE
35	PH6186035	HAMMER PIN
36	PH6186036	O-RING
37	PH6186037	HAMMER
38	PH6186038	HOUSING COVER
39	PH6186039	FRONT GASKET
40	PH6186040	BUSHING
41	PH6186041	SOCKET SET RING
42	PH6186042	ANVIL
44	PH6186044	HOUSING COVER PILOT
45	PH6186045	O-RING
46	PH6186046	RETAINING RING
47	PH6186047	LOCK WASHER
*48	PH6186048	O-RING KIT

* Not Included; for aftermarket purchase only

Free Manuals Download Website

<http://myh66.com>

<http://usermanuals.us>

<http://www.somanuals.com>

<http://www.4manuals.cc>

<http://www.manual-lib.com>

<http://www.404manual.com>

<http://www.luxmanual.com>

<http://aubethermostatmanual.com>

Golf course search by state

<http://golfingnear.com>

Email search by domain

<http://emailbydomain.com>

Auto manuals search

<http://auto.somanuals.com>

TV manuals search

<http://tv.somanuals.com>