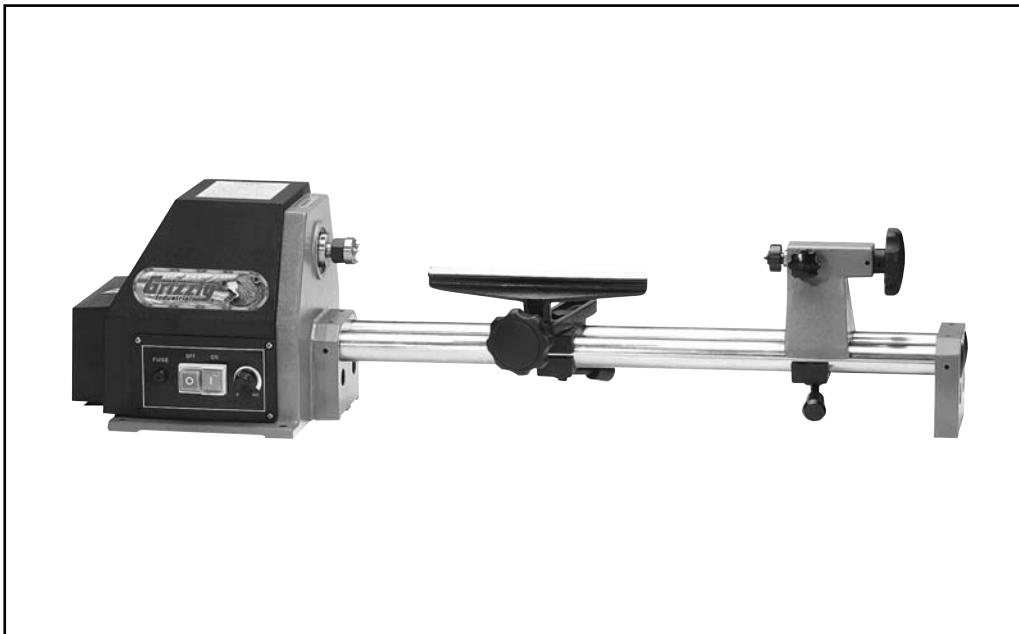




VARIABLE SPEED WOOD LATHE

MODEL G8690

INSTRUCTION MANUAL



COPYRIGHT © 1999 BY GRIZZLY INDUSTRIAL, INC.
**WARNING: NO PORTION OF THIS MANUAL MAY BE REPRODUCED IN ANY SHAPE
OR FORM WITHOUT THE WRITTEN APPROVAL OF GRIZZLY INDUSTRIAL, INC.**
REPRINTED JUNE, 2001 PRINTED IN TAIWAN.



WARNING!

Some dust created by power sanding, sawing, grinding, drilling, and other construction activities contains chemicals known to the State of California to cause cancer, birth defects or other reproductive harm. Some examples of these chemical are:

- **Lead from lead-based paints.**
- **Crystalline silica from bricks, cement and other masonry products.**
- **Arsenic and chromium from chemically-treated lumber.**

Your risk from these exposures varies, depending on how often you do this type of work. To reduce your exposure to these chemicals: Work in a well ventilated area, and work with approved safety equipment, such as those dust masks that are specially designed to filter out microscopic particles.

Table Of Contents

	PAGE
1. SAFETY	
SAFETY RULES FOR ALL TOOLS	2-3
ADDITIONAL SAFETY INSTRUCTIONS FOR G8690	4
2. CIRCUIT REQUIREMENTS	
110V OPERATION	5
GROUNDING	5
EXTENSION CORDS	5
3. INTRODUCTION	
COMMENTARY	6
UNPACKING	7
PIECE INVENTORY	7
CLEAN UP	8
SITE CONSIDERATIONS	8
4. ASSEMBLY	
BEGINNING ASSEMBLY	9
GUIDE RAILS	9
TOOL REST	10
TAILSTOCK.....	10
LIVE CENTER	10
SPUR CENTER.....	11
FACEPLATE	11
5. OPERATIONS	
TEST RUN.....	12
SPINDLE TURNING.....	12-13
SPEED SELECTOR	13
TOOL REST	14
6. MAINTENANCE	
GENERAL	15
LUBRICATION.....	15
7. CLOSURE	16
MACHINE DATA	17
PARTS BREAKDOWN AND PARTS LISTS	18-19
WARRANTY AND RETURNS	20

SECTION 1: SAFETY

WARNING

For Your Own Safety Read Instruction Manual Before Operating This Equipment

The purpose of safety symbols is to attract your attention to possible hazardous conditions. This manual uses a series of symbols and signal words which are intended to convey the level of importance of the safety messages. The progression of symbols is described below. Remember that safety messages by themselves do not eliminate danger and are not a substitute for proper accident prevention measures.



Indicates an imminently hazardous situation which, if not avoided, **WILL** result in death or serious injury.



Indicates a potentially hazardous situation which, if not avoided, **COULD** result in death or serious injury.



Indicates a potentially hazardous situation which, if not avoided, **MAY** result in minor or moderate injury. It may also be used to alert against unsafe practices.

NOTICE

This symbol is used to alert the user to useful information about proper operation of the equipment.

WARNING

Safety Instructions For Power Tools

- KEEP GUARDS IN PLACE** and in working order.
- REMOVE ADJUSTING KEYS AND WRENCHES.** Form habit of checking to see that keys and adjusting wrenches are removed from tool before turning on.
- KEEP WORK AREA CLEAN.** Cluttered areas and benches invite accidents.
- DO NOT USE IN DANGEROUS ENVIRONMENT.** Don't use power tools in damp or wet locations, or where any flammable or noxious fumes may exist. Keep work area well lighted.
- KEEP CHILDREN AND VISITORS AWAY.** All children and visitors should be kept a safe distance from work area.
- MAKE WORKSHOP CHILD PROOF** with padlocks, master switches, or by removing starter keys.
- DO NOT FORCE TOOL.** It will do the job better and safer at the rate for which it was designed.
- USE RIGHT TOOL.** Do not force tool or attachment to do a job for which it was not designed.

WARNING

Safety Instructions For Power Tools

- 9. USE PROPER EXTENSION CORD.** Make sure your extension cord is in good condition. Conductor size should be in accordance with the chart below. The amperage rating should be listed on the motor or tool nameplate. An undersized cord will cause a drop in line voltage resulting in loss of power and overheating. Your extension cord must also contain a ground wire and plug pin. Always repair or replace extension cords if they become damaged.

Minimum Gauge for Extension Cords

AMP RATING	LENGTH		
	25ft	50ft	100ft
0-6	18	16	16
7-10	18	16	14
11-12	16	16	14
13-16	14	12	12
17-20	12	12	10
21-30	10	10	No

- 10. WEAR PROPER APPAREL.** Do not wear loose clothing, gloves, neckties, rings, bracelets, or other jewelry which may get caught in moving parts. Non-slip footwear is recommended. Wear protective hair covering to contain long hair.
- 11. ALWAYS USE SAFETY GLASSES.** Also use face or dust mask if cutting operation is dusty. Everyday eyeglasses only have impact resistant lenses, they are NOT safety glasses.
- 12. SECURE WORK.** Use clamps or a vise to hold work when practical. It's safer than using your hand and frees both hands to operate tool.
- 13. DO NOT OVERREACH.** Keep proper footing and balance at all times.
- 14. MAINTAIN TOOLS WITH CARE.** Keep tools sharp and clean for best and safest performance. Follow instructions for lubricating and changing accessories.
- 15. USE RECOMMENDED ACCESSORIES.** Consult the owner's manual for recommended accessories. The use of improper accessories may cause risk of injury.

- 16. REDUCE THE RISK OF UNINTENTIONAL STARTING.** On machines with magnetic contact starting switches there is a risk of starting if the machine is bumped or jarred. Always disconnect from power source before adjusting or servicing. Make sure switch is in OFF position before reconnecting.

- 17. MANY WOODWORKING TOOLS CAN "KICKBACK" THE WORKPIECE** toward the operator if not handled properly. Know what conditions can create "kickback" and know how to avoid them. Read the manual accompanying the machine thoroughly.

- 18. CHECK DAMAGED PARTS.** Before further use of the tool, a guard or other part that is damaged should be carefully checked to determine that it will operate properly and perform its intended function. Check for alignment of moving parts, binding of moving parts, breakage of parts, mounting, and any other conditions that may affect its operation. A guard or other part that is damaged should be properly repaired or replaced.

- 19. NEVER LEAVE TOOL RUNNING UNATTENDED. TURN POWER OFF.** Do not leave tool until it comes to a complete stop.

- 20. NEVER OPERATE A MACHINE WHEN TIRED, OR UNDER THE INFLUENCE OF DRUGS OR ALCOHOL.** Full mental alertness is required at all times when running a machine.

- 21. NEVER ALLOW UNSUPERVISED OR INEXPERIENCED PERSONEL TO OPERATE THE MACHINE.** Make sure any instructions you give in regards to machine operation are approved, correct, safe, and clearly understood.

- 22. IF AT ANY TIME YOU ARE EXPERIENCING DIFFICULTIES** performing the intended operation, stop using the machine! Then contact our service department or ask a qualified expert how the operation should be performed.

WARNING

Additional Safety Instructions For The Lathe

1. **MAKE SURE ALL GUARDS** are in place and that the Lathe sits on a flat, stable surface.
2. **ALWAYS WEAR EYE PROTECTION** or a face shield when operating the Lathe. Use a respirator to avoid inhaling dust. All safety equipment should be ANSI approved.
3. **BEFORE STARTING THE MACHINE** be certain the workpiece has been properly imbedded on the headstock and tailstock centers and that there is adequate clearance for the full rotation.
4. **ADJUST TOOL REST** to provide proper support for the turning tool you will be using. Test tool rest clearance by rotating workpiece by hand before turning lathe on.
5. **SELECT THE TURNING SPEED** which is appropriate for the type of work. Allow the lathe to gain its full speed before using the lathe.
6. **ALWAYS INSPECT THE CONDITION** of the materials you are turning. Pay particular attention to knots, splits and other potentially dangerous conditions.
7. **KEEP LATHE TOOLS PROPERLY SHARPENED** and hold firmly in the proper position when turning.
8. **NEVER OPERATE THE LATHE WITH DAMAGED OR WORN PARTS.** Maintain your lathe in proper working condition. Perform routine inspections and maintenance promptly when called for. Put away adjustment tools after use.
9. **MAKE SURE YOUR WOOD LATHE IS TURNED OFF**, disconnected from its power source and all moving parts have come to a complete stop before starting any inspection, adjustment, or maintenance procedure.
10. **DO NOT LEAVE LATHE RUNNING UNATTENDED** for any reason.
11. **DO NOT STOP LATHE USING YOUR HAND** against the workpiece.
12. **KEEP LOOSE CLOTHING ARTICLES** such as sleeves, belts or jewelry items away from the lathe spindle.
13. **WHEN FACE PLATE TURNING**, use lathe chisels on the downward spinning side of the workpiece only.
14. **REMOVE THE TOOL REST** when performing sanding or polishing operations on the rotating spindle.
15. **ATTEMPTING TO REMOVE** too much material at once may cause work material to fly out of the lathe.

CAUTION

No list of safety guidelines can be complete. Every shop environment is different. Always consider safety first, as it applies to your individual working conditions. Use this and other machinery with caution and respect. Failure to do so could result in serious personal injury, damage to equipment or poor work results.

SECTION 2: CIRCUIT REQUIREMENTS

110V Operation

The Model G8690 is wired for 110/120V, single-phase operation only. The 1/3 HP motor will safely draw 3.1 amps at 110V. If you operate this machine on any circuit that is already close to its capacity, it might blow a fuse or trip a circuit breaker. However, if an unusual load does not exist and a power failure still occurs, contact a qualified electrician or our service department.

The lathe comes equipped with its own fuse rated at 3.15 amps. Never replace the fuse with one rated higher than 3.5 amps.



Extension Cords

If you find it necessary to use an extension cord with the Model G8690, make sure the cord is rated Hard Service (grade S) or better. Refer to the chart in the standard safety instructions to determine the minimum gauge for the extension cord. The extension cord must also contain a ground wire and plug pin. Always repair or replace extension cords when they become worn or damaged.



Grounding

In the event of an electrical short, grounding reduces the risk of electric shock by providing a path of least resistance to disperse electric current. This tool is equipped with a power cord having an equipment-grounding conductor. See **Figure 1**. The outlet must be properly installed and grounded in accordance with all local codes and ordinances.

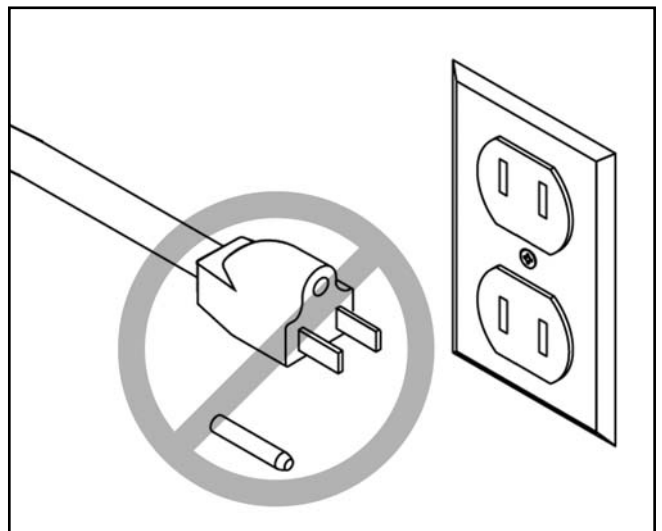
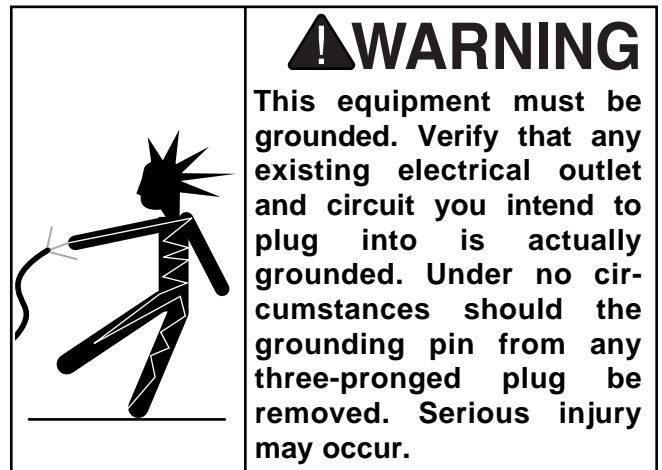


Figure 1A Do not remove grounding pin.

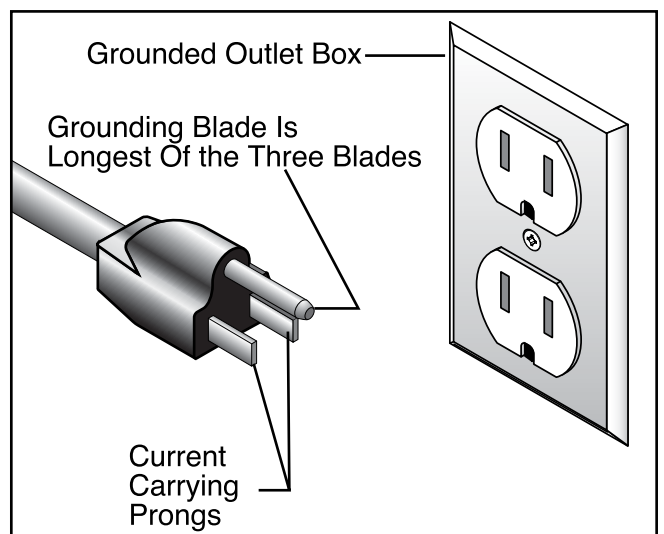


Figure 1. Typical 110V 3-prong plug and outlet.



SECTION 3: INTRODUCTION

Commentary

We are proud to offer the Grizzly Model G8690 Variable Speed Wood Lathe. The Model G8690 is part of a growing Grizzly family of fine woodworking machinery. When used according to the guidelines set forth in this manual, you can expect years of trouble-free, enjoyable operation and proof of Grizzly's commitment to customer satisfaction.

The Model G8690 is a wood turning lathe with a variable spindle speed range of zero to 3025 R.P.M. Capacity between the centers is adjustable up to 19" and the swing over the bed is 6". Shipping weight is approximately 40 lbs. This lathe combines all the convenience of a bench model with the features of a floor size model.

A number of chisels, chucks, spur centers and live centers for the Model G8690 are available through the Grizzly catalog.

We are also pleased to provide this manual with the Model G8690. It was written to guide you through assembly, review safety considerations, and cover general operating procedures. It represents our effort to produce the best documentation possible. If you have any comments regarding this manual, please write to us at the address below:

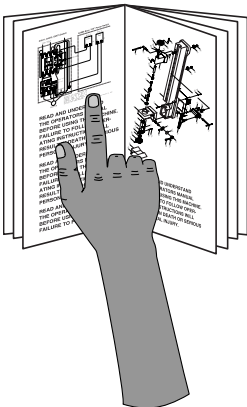
Grizzly Industrial, Inc.
c/o Technical Documentation
P.O. Box 2069
Bellingham, WA 98227-2069

Most importantly, we stand behind our machines. If you have any service questions or parts requests, please call or write us at the location listed below.

Grizzly Industrial, Inc.
2406 Reach Road
Williamsport, PA 17701
Phone: (570) 546-9663
Fax: (800) 438-5901
E-Mail: techsupport@grizzly.com
Web Site: <http://www.grizzly.com>

After fall 2001:
Grizzly Industrial, Inc.
1203 Lycoming Circle
Pennsdale, PA 17756

The specifications, drawings, and photographs illustrated in this manual represent the Model G8690 as supplied when the manual was prepared. However, owing to Grizzly's policy of continuous improvement, changes may be made at any time with no obligation on the part of Grizzly. Whenever possible, though, we send manual updates to all owners of a particular tool or machine. Should you receive one, we urge you to insert the new information with the old and keep it for reference.

	<p>!WARNING</p> <p>Read the manual before assembly and operation. Become familiar with the machine and it's operation before beginning any work. Serious personal injury may result if safety or operational information is not understood or followed.</p>
--	--



Unpacking

This wood lathe is shipped from the manufacturer in a carefully packed carton. If you discover the machine is damaged after you've signed for delivery, and the truck and driver are gone, you will need to file a freight claim with the carrier. Save the containers and all packing materials for possible inspection by the carrier or its agent. Without the packing materials, filing a freight claim can be difficult. If you need assistance determining whether you need to file a freight claim, or with the procedure to file one, please contact our Customer Service.

When you are completely satisfied with the condition of your shipment, you should inventory its parts.

NOTICE

Save all containers and packing materials until you are satisfied that your Model G8690 has arrived in good condition. Freight company adjusters will want to inspect those materials in the event that a freight claim must be made.



Piece Inventory

After all the parts have been removed from the carton, you should have:

- Lathe Assembly
- Stand Assembly
- Tool Rest
- Tailstock
- Live Center
- #1 M.T. Spur Center
- Hardware Accessories

In the event that any non-proprietary parts are missing (e.g. a nut or a washer), we would be glad to replace them, or, for the sake of expediency, replacements can be obtained at your local hardware store.


NOTICE

A full parts list and breakdown can be found toward the end of this manual. For easier assembly, or to identify specific parts, please refer to the detailed illustrations at the end of the manual.



Clean Up

The unpainted surfaces are coated with a waxy oil to protect them from corrosion during shipment. Remove this protective coating with a solvent cleaner or citrus-based degreaser such as Grizzly's G7895 Degreaser. Avoid chlorine-based solvents as they may damage painted surfaces should they come in contact. Always follow the usage instructions on the product you choose for clean up.

	<p>! WARNING Do not use gasoline or other petroleum-based solvents to clean with. They have low flash points which make them extremely flammable. A risk of explosion and burning exists if these products are used. Serious personal injury may occur.</p>
--	--

<p>! CAUTION Many of the solvents commonly used to clean machinery can be toxic when inhaled or ingested. Always work in well-ventilated areas far from potential ignition sources when dealing with solvents. Use care when disposing of waste rags and towels to be sure they do not create fire or environmental hazards. Keep children and animals safely away when cleaning and assembling this machine.</p>
--

	<p>! WARNING Do not smoke while using solvents. A risk of explosion or fire exists and may result in serious personal injury.</p>
---	--



Site Considerations

BENCH LOAD

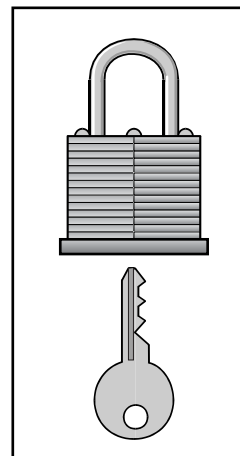
Your Model G8690 represents a moderately large weight load in a small footprint. Ensure that your workbench is sturdy enough to carry the weight of the Model G8690. If you question the strength of your workbench, you can opt to reinforce it.

WORKING CLEARANCES

Working clearances can be thought of as the distances between machines and obstacles that allow safe operation of every machine without limitation. Consider existing and anticipated machine needs, size of material to be processed through each machine, and space for auxiliary stands and/or work tables. Also consider the relative position of each machine to one another for efficient material handling. Be sure to allow yourself sufficient room to safely run your machines in any foreseeable operation.

LIGHTING AND OUTLETS

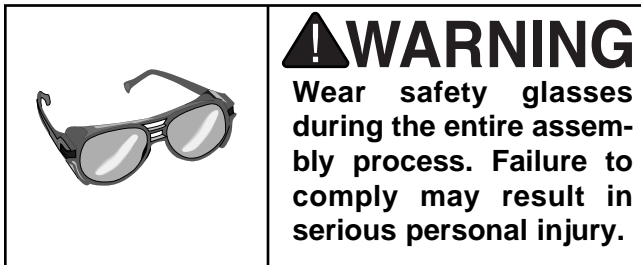
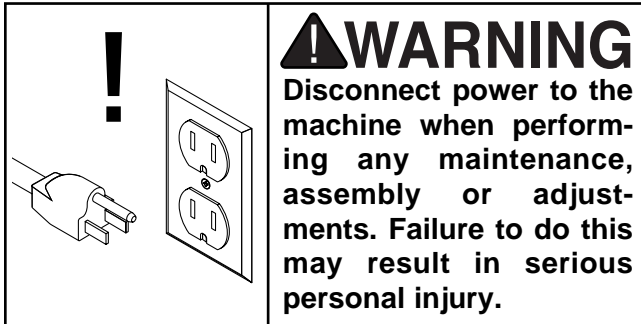
Lighting should be bright enough to eliminate shadow and prevent eye strain. Electrical circuits should be dedicated or large enough to handle combined motor amp loads. Outlets should be located near each machine so power or extension cords are not obstructing high-traffic areas. Be sure to observe local electrical codes for proper installation of new lighting, outlets, or circuits.

	<p>! CAUTION Make your shop "child safe." Ensure that your workplace is inaccessible to youngsters by closing and locking all entrances when you are away. Never allow visitors in your shop when assembling, adjusting or operating equipment.</p>
--	--



SECTION 4: ASSEMBLY

Beginning Assembly



Most of your Model G8690 has been assembled at the factory, but some parts must be assembled or installed after delivery. We have organized the assembly process into steps. Please follow along in the order presented here.

TOOLS REQUIRED: A metric socket set, 6" adjustable wrench, and Phillips® head screw driver.

Guide Rails

Install the two guide rails between the two foot assemblies and secure in place using the four setscrews (M6-1 x 10) as shown in **Figure 2**.



Figure 2. Guide rails installed.



Tool Rest

Install the tool rack brackets and the tool rack base onto the guide rails using the hex bolt (M12-1.75 x 65), washer and handle. See **Figure 3**.



Figure 3. Tool rack mounted to guide rails.

The tool rest fits into the tool rack shaft and is tightened in place with a setscrew (M6-1 x 8). The tool rack shaft drops into the tool rack base and is secured with the tightening knob as shown in **Figure 4**.



Figure 4. Tool rest mounted in bracket.



Tailstock

The tailstock rests on the guide rails and is held in place by the tailstock bracket using a double end screw (M12-1.75 x 65), washer and handle. The tailstock can be adjusted along the length of the guide rails to accommodate various lengths of wood stock. There are two ways to adjust the tailstock. The handle located under the lathe bed can be loosened, allowing the tailstock to slide up and down the length of the guide rails; or the hand wheel can be loosened, allowing the threaded spindle to move back and forth in the tailstock for fine adjustment. See **Figure 5**.

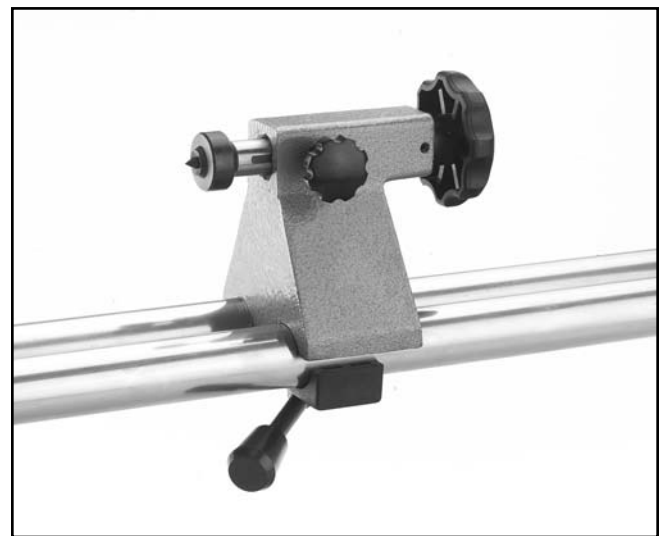


Figure 5. Tailstock mounted to guide rails.



Live Center

The live center is installed by inserting the end of the shaft into the tailstock assembly. While holding in place, turn the handwheel on the tailstock clockwise until snug.



Spur Center

The Model G8690 is supplied with a #1 Morse Taper spur center for use when spindle turning. The spur center is used in conjunction with the tailstock live center. Install the spur center by inserting it into the hole in the headstock spindle end. To remove the spur center from the headstock, insert a pin into the spindle hole and turn the hex nut counterclockwise with a wrench until the spur center is ejected. See **Figure 5A**.

!WARNING

We recommend cleaning the spur center taper with mineral spirits. Refer to the safety warnings on the container of the mineral spirits. Failure to clean the mating surfaces may result in separation, and an unsafe condition. Separation is usually a result of oil or grease on the taper.

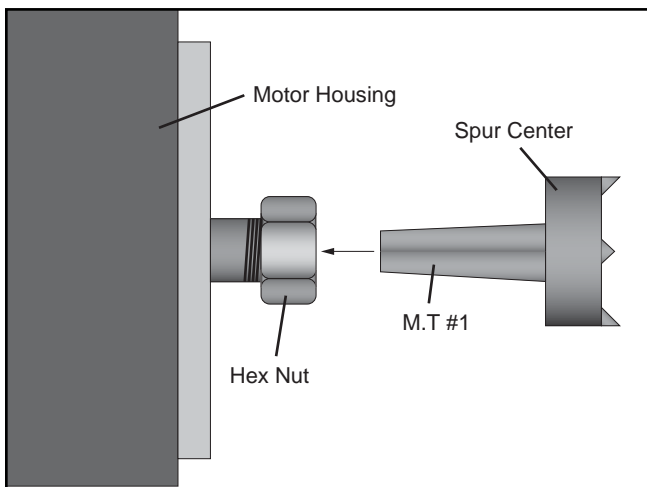


Figure 5A. Hex nut installed before inserting spur center.



Faceplate

The faceplate is used for turning plates and bowls. To install the faceplate, remove the spur center. Insert a pin in the spindle shaft to hold the spindle, and thread the faceplate onto the spindle threads as seen in **Figure 6**. Tighten securely with your fingers, and use the mounting holes on the faceplate to attach wood stock with wood screws.



Figure 6. Installing the faceplate.



SECTION 5: OPERATIONS

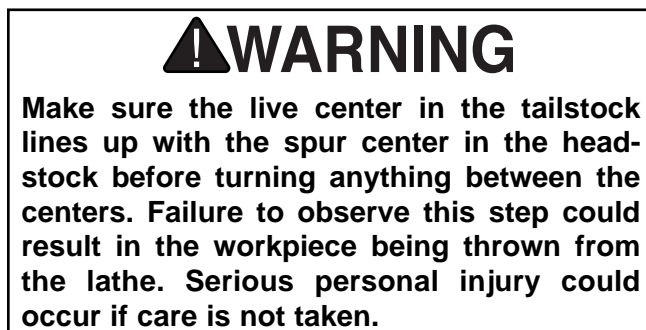
Test Run



Once assembly is complete and adjustments are done to your satisfaction, you are ready to test run the machine.

Press the START button. Make sure that your finger is poised on the STOP button, just in case there is a problem. The lathe should run smoothly, with little or no vibration or rubbing noises. Strange or unnatural noises should be investigated and corrected before operating the machine further.

If you cannot easily locate the source of an unusual noise or vibration, contact our service department for help.



Spindle Turning

To mount a workpiece between centers:

1. Locate the center point on both ends of the workpiece by carefully drawing diagonal lines from corner to corner. The point of intersection is the center of the work. Find the center of round wood stock by using a center finder instrument.
2. When turning stock with a diameter greater than 2", remove the corner length edges with a hand plane or similar operation as shown in **Figure 6A**.

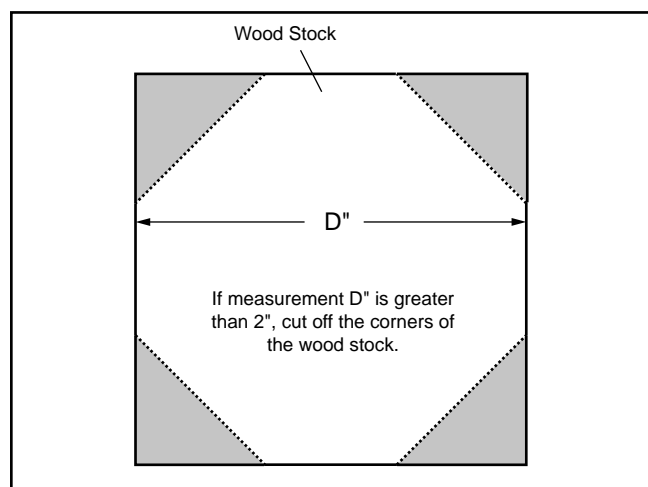


Figure 6A. Cross-section of turning stock.

3. Hold the spindle vertically and support it on a solid surface. Line up the spur center with the center of the workpiece. Drive the spur center into the stock about 1/4" using a dead blow hammer. Be careful not to split the workpiece. See **Figure 6B**. Wood with splits along the grain may fly off during the operation. With dense wood, drill a hole at the centers and score lines with a saw blade for the spur.

Speed Selector

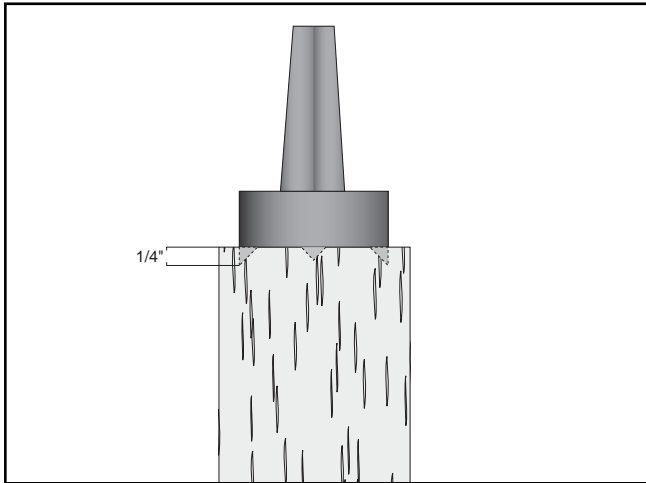


Figure 6B. Spur center set into wood stock.

4. Once the spur center is firmly attached to the workpiece, insert the spur center (with the attached workpiece) into the headstock spindle. Be certain the hex nut is threaded onto the spindle before tapping the spur center in.
5. While supporting the workpiece, slide the tailstock close to the end of the workpiece and lock it into place.
6. Line up the live center with the workpiece center. Turn the handwheel to press the point of the live center into the workpiece.
7. Lock the tailstock in place.

! WARNING

Do not press too firmly or the bearings will bind and overheat. Likewise, do not adjust too loosely or the workpiece will spin off the lathe. Use good judgement. Serious personal injury could result if care is not taken.



The variable speed selector allows the adjustment of the spindle R.P.M. Before turning the lathe on, make sure the speed selector knob is set at the lowest R.P.M. (turn counterclockwise). See **Figure 7**.

Once the lathe is turned on, slowly increase the R.P.M. of the lathe by turning the speed selector knob clockwise. Make sure that your finger is poised on the STOP button, just in case there's a problem. The lathe should run smoothly, with little or no vibration or rubbing noises. Strange or unnatural noises should be investigated and corrected before operating the machine further.

If you cannot easily locate the source of an unusual noise or vibration, contact our service department for help.

! CAUTION

Remember to choose the correct speed for your particular turning project. As a general rule, the larger the workpiece diameter, the slower the speed. Always start at the slowest speed.



Figure 7. Operating controls.



Tool Rest

Adjust the tool rest as close to the workpiece as possible without actually coming into contact with the workpiece. Test by hand-turning the workpiece before turning the lathe on. Ensure that the lathe chisel is fully supported by the tool rest. Support the lathe chisel on the tool rest with one hand, while the other hand controls the chisel. See **Figure 8**.



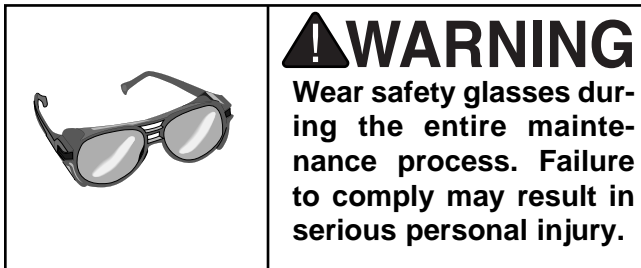
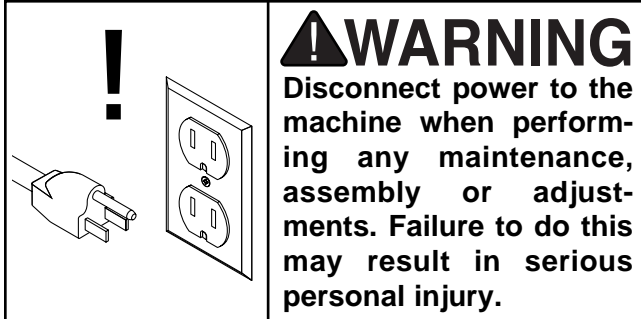
Figure 8. Correct hand placement for operation.

	<p>⚠ WARNING Wear a face shield during the test run and operation of this wood working lathe. Failure to do so could result in serious injury.</p>
---	---



SECTION 7: MAINTENANCE

General



Regular periodic maintenance on your Model G8690 will ensure its optimum performance. Make a habit of inspecting your lathe each time you use it. Check for the following conditions and repair or replace when necessary:

1. Loose mounting bolts.
2. Worn switch.
3. Worn or damaged cords and plugs.
4. Damaged cog tooth belt.

The non-painted surfaces on the Model G8690 should be protected against rust and pitting. Wiping the lathe clean after every use ensures that wood dust isn't allowed to trap moisture against bare metal surfaces.

G8690 Variable Speed Wood Lathe

Some woodworkers recommend using automotive paste wax on exposed steel and cast iron surfaces. The wax provides a layer of protection. Avoid waxes that contain silicone or other synthetic ingredients. These materials can find their way into lumber that's being worked, and can make staining and finishing difficult. If you use paste wax, make sure that it's 100% Carnauba wax.



Lubrication

Since all bearings are shielded and permanently lubricated, simply leave them alone until they need to be replaced. Do not lubricate them.



SECTION 8: CLOSURE

The following pages contain general machine data, parts diagrams/lists, troubleshooting guide and Warranty/Return information for your Model G8690.

If you need parts or help in assembling your machine, or if you need operational information, we encourage you to call our Service Department. Our trained service technicians will be glad to help you.

If you have comments dealing specifically with this manual, please write to our Bellingham, Washington location using the address in **Section 3 Introduction**.

We have included some important safety measures that are essential to this machine's operation. While most safety measures are generally universal, Grizzly reminds you that each workshop is different and safety rules should be considered as they apply to your specific situation.

WARNING

Operating this equipment creates the potential for flying debris to cause eye injury. Always wear safety glasses or goggles when operating equipment. Everyday glasses or reading glasses only have impact resistant lenses, they are not safety glasses. Be certain the safety glasses you wear meet the appropriate standards of the American National Standards Institute (ANSI).



We recommend you keep a copy of our current catalog for complete information regarding Grizzly's warranty and return policy. If you need additional technical information relating to this machine, or if you need general assistance or replacement parts, please contact the Service Department listed in **Section 3 Introduction**.

Additional information sources are necessary to realize the full potential of this machine. Trade journals, woodworking magazines, and your local library are good places to start.

WARNING

The Model G8690 was specifically designed for wood turning. **DO NOT MODIFY AND/OR USE THIS MACHINE FOR ANY OTHER PURPOSE.** Modifications or improper use of this tool will void the warranty. If you are confused about any aspect of this machine, **DO NOT** use it until you have answered all your questions. Serious personal injury may occur.

WARNING

Like all power tools, there is danger associated with the Model G8690. Accidents are frequently caused by lack of familiarity or failure to pay attention. Use this tool with respect and caution to lessen the possibility of operator injury. If normal safety precautions are overlooked or ignored, serious personal injury may occur.





MACHINE DATA SHEET

Customer Service #: (570) 546-9663 • To Order Call: (800) 523-4777 • Fax #: (800) 438-5901

MODEL G8690 VARIABLE SPEED WOOD LATHE

Design Type.....Bench Top Model

Overall Dimensions:

.....9¼" H x 9¾" W x 37¼" L
 Base to Center Height6⅝"
 Swing Over Bed.....6"
 Distance Between Centers19"
 Bed Tubing Diameter1.26"
 Shipping Weight 40 lbs.
 Weight in Place35 lbs.
 Box Size.....27½" L x 11" W x 10¾" H
 Footprint 9¼" x 37"

Construction:

BedPrecision Steel Tubing
 HeadstockCast Iron
 TailstockCast Iron
 SpindleShielded & Lubricated Ball Bearings

Specifications:

Spindle Size.....¾" x 10 TPI RH
 Spindle TaperMT #1
 Range of SpeedsVariable/ 0-3025 R.P.M.

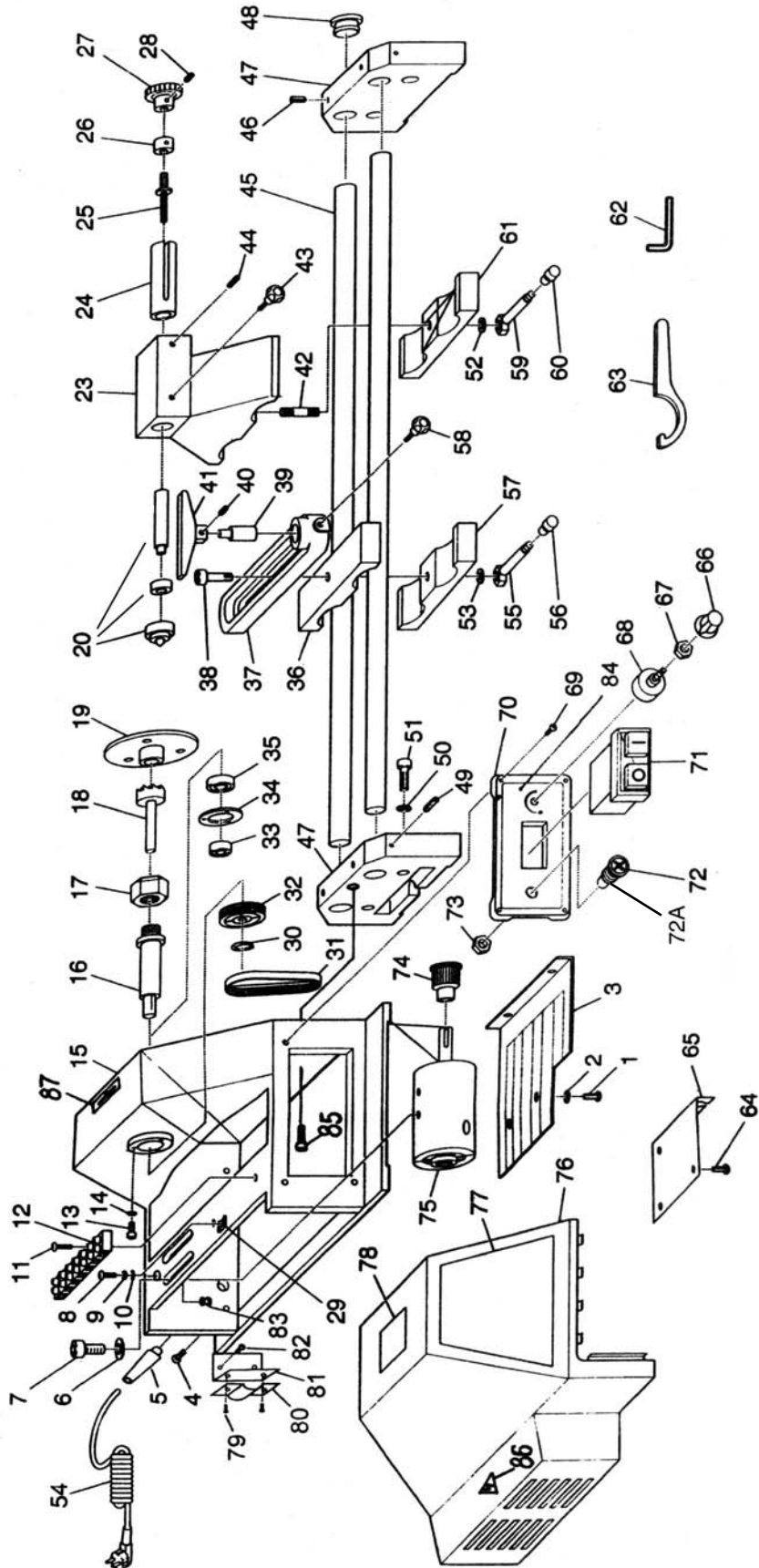
Motor:

TypeUniversal Fan-Cooled
 Horsepower ⅓ H.P.
 Phase / CycleSingle Phase/ 60 Hz
 Voltage110V
 Amps3.1
 R.P.M.Variable
 BearingsShielded & Lubricated Ball Bearings
 SwitchPush Button

Standard Features:

.....Tool Rest
Spur Center
Live Center
4" Face Plate

Specifications, while deemed accurate, are not guaranteed.



Ref#	Part#	Description
001	PS05M	PHLP HD SCR M5 X 8
002	PW02M	FLAT WASHER M5
003	P8690003	PROTECTING PLATE
004	PS08M	PHLP HD SCR M5 X 12
005	P8690005	RUBBER SHEATH
006	PW03M	FLAT WASHER M6
007	PSB01M	CAP SCREW M6 X 16
008	PS05M	PHLP HD SCR M5 X 8
009	PLW01M	LOCK WASHER M5
010	P8690010	STAR WASHER M5
011	PS34	PHLP HD SCR M3 X 25
012	P8690012	CONNECTING POST
013	PS11M	PHLP HD SCR M6 X 16
014	PW03M	FLAT WASHER M6
015	P8690015	HEADSTOCK
016	P8690016	SPINDLE
017	PN15M	HEX NUT M18 X 1.5
018	G2521	MT #1 SPUR CENTER
019	P8690019	FACEPLATE 4"
020	G1192	LIVE CENTER
023	P8690023	TAILSTOCK
024	P8690024	TAPER CASE
025	P8690025	GUIDE SCREW
026	P8690026	COLLAR
027	P8690027	HAND WHEEL
028	PSS03M	SETSCREW M6-1 X 8
029	P8690029	GROUND MARKER
030	P8690030	EXTERNAL RETAINING RING
031	P8690031	V-BELT
032	P8690032	SPINDLE PULLEY
033	P8690033	BALL BEARING 80202
034	P8690034	BEARING COVER
035	P8690035	BALL BEARING 80204
036	P8690036	TOOL REST BRACKET
037	P8690037	TOOL REST BASE
038	P8690038	CAP SCREW M12-1.75 X 65
039	P8690039	TOOL REST SHAFT
040	PSS03M	SETSCREW M6-1 X 8
041	P8690041	TOOL REST
042	P8690042	DBL END SCR M12-1.75-65
043	P8690043	KNOB
044	PSS02M	SETSCREW M 6-1 X 8
045	P8690045	GUIDE BAR

Ref#	Part#	Description
046	PSS01M	SETSCREW M6-1 X 10
047	P8690047	FOOT
048	P8690048	COVER
049	PSS01M	SETSCREW M6-1 X 10
050	PLW06M	LOCK WASHER M10
051	PSB64M	CAP SCREW M10 X 25
052	PW06M	FLAT WASHER M12
053	PW06M	FLAT WASHER M12
054	P8690054	LONG POWER CORD
055	P8690055	TOOL REST HANDLE
056	P8690056	HANDLE END
057	P8690057	TOOL REST BRACKET
058	P8690058	KNOB
059	P8690059	TAILSTOCK BRACKET
060	P8690060	HANDLE END
061	P8690061	TAILSTOCK BRACKET
062	PAW03M	ALLEN® WRENCH 3MM
063	P8690063	SPECIAL WRENCH
064	P8690064	SELF-TAPPING SCREW M3 X 8
065	P8690065	SPEED CONTROL BOARD
066	P8690066	SPEED KNOB
067	P8690067	SPECIAL NUT
068	P8690068	POTENTIAL RING
069	PS08M	PHLP HD SCR M5 X 12
070	P8690070	TOP PLATE
071	G8992	POWER SWITCH
072	P8690072	FUSE HOLDER
072A	P8690072A	3.15A FUSE
073	P8690073	SPECIAL NUT
074	P8690074	MOTOR PULLEY
075	P8690075	D.C. MOTOR
076	P8690076	COVER
077	P8690077	LOGO
078	P8690078	WARNING LABEL
079	PS02M	PHLP HD SCR M4 X 12
080	P8690080	PRESS PLATE
081	P8690081	SUPPORT
082	PS02M	PHLP HD SCR M4 X 12
083	P8690083	PROTECTING COVER
084	P8690084	SPEED CONTROL LABEL
085	PSB31M	CAP SCREW M8 X 25
086	P8690086	ELECTRICAL LABEL
087	P8690087	DIRECTIONAL LABEL

WARRANTY AND RETURNS

Grizzly Industrial, Inc. warrants every product it sells for a period of **1 year** to the original purchaser from the date of purchase. This warranty does not apply to defects due directly or indirectly to misuse, abuse, negligence, accidents, repairs or alterations or lack of maintenance. This is Grizzly's sole written warranty and any and all warranties that may be implied by law, including any merchantability or fitness, for any particular purpose, are hereby limited to the duration of this written warranty. We do not warrant or represent that the merchandise complies with the provisions of any law or acts unless the manufacturer so warrants. In no event shall Grizzly's liability under this warranty exceed the purchase price paid for the product and any legal actions brought against Grizzly shall be tried in the State of Washington, County of Whatcom.

We shall in no event be liable for death, injuries to persons or property or for incidental, contingent, special, or consequential damages arising from the use of our products.

To take advantage of this warranty, contact us by mail or phone and give us all the details. We will then issue you a "Return Number," which must be clearly posted on the outside as well as the inside of the carton. We will not accept any item back without this number. Proof of purchase must accompany the merchandise.

The manufacturers reserve the right to change specifications at any time because they constantly strive to achieve better quality equipment. We make every effort to ensure that our products meet high quality and durability standards and we hope you never need to use this warranty.

Please feel free to write or call us if you have any questions about the machine or the manual.

Thank you again for your business and continued support. We hope to serve you again soon.

WARRANTY CARD

Name _____
Street _____
City _____ State _____ Zip _____
Phone Number _____ E-Mail _____ FAX _____

MODEL # G8690 Variable Speed Wood Lathe Order _____

The following information is given on a voluntary basis. It will be used for marketing purposes to help us develop better products and services. Of course, all information is strictly confidential.

1. How did you learn about us?

Advertisement Friend
 Catalog Card Deck
 World Wide Web
 Other _____

2. Which of the following magazines do you subscribe to.

American Woodworker Practical Homeowner
 Cabinetmaker Shop Notes
 Family Handyman Today's Homeowner
 Fine Homebuilding WOOD
 Fine Woodworking Wooden Boat
 Home Handyman Woodshop News
 Journal of Light Construction Woodsmith
 Old House Journal Woodwork
 Popular Mechanics Woodworker
 Popular Science Woodworker's Journal
 Popular Woodworking Workbench
 Other _____

3. Which of the following woodworking/remodeling shows do you watch?

Backyard America The New Yankee Workshop
 Home Time This Old House
 The American Woodworker Woodwright's Shop
 Other _____

4. What is your annual household income?

\$20,000-\$29,999 \$60,000-\$69,999
 \$30,000-\$39,999 \$70,000-\$79,999
 \$40,000-\$49,999 \$80,000-\$89,999
 \$50,000-\$59,999 \$90,000 +

5. What is your age group?

20-29 50-59
 30-39 60-69
 40-49 70 +

6. How long have you been a woodworker?

0 - 2 Years 8 - 20 Years
 2 - 8 Years 20+ Years

7. How would you rank your woodworking skills?

Simple Advanced
 Intermediate Master Craftsman

8. What stationary woodworking tools do you own? Check all that apply.

Air Compressor Panel Saw
 Band Saw Planer
 Drill Press Power Feeder
 Drum Sander Radial Arm Saw
 Dust Collector Shaper
 Horizontal Boring Machine Spindle Sander
 Jointer Table Saw
 Lathe Vacuum Veneer Press
 Mortiser Wide Belt Sander
 Other _____

9. How many of your woodworking machines are Grizzly? _____

10. Which benchtop tools do you own? Check all that apply.

1" x 42" Belt Sander 6" - 8" Grinder
 5" - 8" Drill Press Mini Lathe
 8" Table Saw 10" - 12" Thickness Planer
 8" - 10" Bandsaw Scroll Saw
 Disc/Belt Sander Spindle/Belt Sander
 Mini Jointer
 Other _____

11. How many of the machines checked above are Grizzly? _____

12. Which portable/hand held power tools do you own? Check all that apply.

Belt Sander Orbital Sander
 Biscuit Joiner Palm Sander
 Circular Saw Portable Planer
 Detail Sander Saber Saw
 Drill/Driver Reciprocating Saw
 Miter Saw Router
 Other _____

13. What machines/supplies would you like Grizzly Industrial to carry?

12" Table Saw Radial Arm Saw
 12" Jointer Panel Saw
 Combination Planer/Jointer Brass Hardware
 Paint & Finishing Supplies Lumber
 Contractor's Supplies
 Other _____

14. What new accessories would you like Grizzly Industrial to carry?

Builders Hardware Hand Tools
 Fasteners Wood Components
 Other _____

15. What other companies do you purchase your tools and supplies from?

16. Do you think your purchase represents good value?

Yes No

17. Would you recommend Grizzly Industrial to a friend?

Yes No

18. Would you allow us to use your name as a reference for Grizzly customers in your area? **Note: We never use names more than three times.**

Yes No

19. Comments: _____

FOLD ALONG DOTTED LINE



Place
Stamp
Here



**GRIZZLY INDUSTRIAL, INC.
P.O. BOX 2069
BELLINGHAM, WA 98227-2069**



FOLD ALONG DOTTED LINE

Send a Grizzly Catalog to a friend:

Name _____
Street _____
City _____ State _____ Zip _____

TAPE ALONG EDGES--PLEASE DO NOT STAPLE

Free Manuals Download Website

<http://myh66.com>

<http://usermanuals.us>

<http://www.somanuals.com>

<http://www.4manuals.cc>

<http://www.manual-lib.com>

<http://www.404manual.com>

<http://www.luxmanual.com>

<http://aubethermostatmanual.com>

Golf course search by state

<http://golfingnear.com>

Email search by domain

<http://emailbydomain.com>

Auto manuals search

<http://auto.somanuals.com>

TV manuals search

<http://tv.somanuals.com>