

# *Grizzly* **Industrial, Inc.**®

## **MODEL H8172 CEMENT MIXER OWNER'S MANUAL**



COPYRIGHT © APRIL, 2007 BY GRIZZLY INDUSTRIAL, INC.  
**WARNING: NO PORTION OF THIS MANUAL MAY BE REPRODUCED IN ANY SHAPE  
OR FORM WITHOUT THE WRITTEN APPROVAL OF GRIZZLY INDUSTRIAL, INC.**  
#TR9030 PRINTED IN CHINA

 **WARNING!**

**This manual provides critical safety instructions on the proper setup, operation, maintenance and service of this machine/equipment.**

**Failure to read, understand and follow the instructions given in this manual may result in serious personal injury, including amputation, electrocution or death.**

**The owner of this machine/equipment is solely responsible for its safe use. This responsibility includes but is not limited to proper installation in a safe environment, personnel training and usage authorization, proper inspection and maintenance, manual availability and comprehension, application of safety devices, blade/cutter integrity, and the usage of personal protective equipment.**

**The manufacturer will not be held liable for injury or property damage from negligence, improper training, machine modifications or misuse.**

 **WARNING!**

**Some dust created by power sanding, sawing, grinding, drilling, and other construction activities contains chemicals known to the State of California to cause cancer, birth defects or other reproductive harm. Some examples of these chemicals are:**

- **Lead from lead-based paints.**
- **Crystalline silica from bricks, cement and other masonry products.**
- **Arsenic and chromium from chemically-treated lumber.**

**Your risk from these exposures varies, depending on how often you do this type of work. To reduce your exposure to these chemicals: Work in a well ventilated area, and work with approved safety equipment, such as those dust masks that are specially designed to filter out microscopic particles.**

# Table of Contents

<b>INTRODUCTION</b> .....	<b>2</b>
Foreword .....	2
Machine Data Sheet.....	2
Contact Info.....	2
<b>SECTION 1: SAFETY</b> .....	<b>3</b>
Safety Instructions for Machinery.....	3
Additional Safety for Cement Mixers.....	5
<b>SECTION 2: CIRCUIT REQUIREMENTS</b> .....	<b>6</b>
110V Operation .....	6
<b>SECTION 3: SETUP</b> .....	<b>7</b>
Setup Safety.....	7
Unpacking .....	7
Inventory.....	8
Assembly.....	9
Test Run.....	11
<b>SECTION 4: OPERATIONS</b> .....	<b>12</b>
Operation Safety .....	12
Operation Tips.....	12
<b>SECTION 5: MAINTENANCE</b> .....	<b>13</b>
Lubrication.....	13
Cleaning .....	13
Drive Belt.....	13
Wiring Diagram .....	14
Parts Breakdown .....	15
Parts Breakdown .....	16
Safety Labels Breakdown .....	17
<b>WARRANTY AND RETURNS</b> .....	<b>18</b>

# INTRODUCTION

## Foreword

We are proud to offer the Model H8172 Cement Mixer. This machine is part of a growing Grizzly family of fine machinery. When used according to the guidelines set forth in this manual, you can expect years of trouble-free, enjoyable operation and proof of Grizzly's commitment to customer satisfaction.

The specifications, drawings, and photographs illustrated in this manual represent the Model H8172 when the manual was prepared. However, owing to Grizzly's policy of continuous improvement, changes may be made at any time with no obligation on the part of Grizzly.

For your convenience, we always keep current Grizzly manuals available on our website at [www.grizzly.com](http://www.grizzly.com). Any updates to your machine will be reflected in these manuals as soon as they are complete. Visit our site often to check for the latest updates to this manual!

## Contact Info

If you have any comments regarding this manual, please write to us at the address below:

Grizzly Industrial, Inc.  
c/o Technical Documentation Manager  
P.O. Box 2069  
Bellingham, WA 98227-2069  
Email: [manuals@grizzly.com](mailto:manuals@grizzly.com)

We stand behind our machines. If you have any service questions or parts requests, please call or write us at the location listed below.

Grizzly Industrial, Inc.  
1203 Lycoming Mall Circle  
Muncy, PA 17756  
Phone: (570) 546-9663  
Fax: (800) 438-5901  
E-Mail: [techsupport@grizzly.com](mailto:techsupport@grizzly.com)  
Web Site: <http://www.grizzly.com>

**Grizzly**  
Industrial, Inc.®

## MACHINE DATA SHEET

Customer Service #: (570) 546-9663 • To Order Call: (800) 523-4777 • Fax #: (800) 438-5901

### MODEL H8172 CEMENT MIXER

#### Product Dimensions:

Weight ..... 157 lbs.  
Length/Width/Height ..... 50" x 33" x 54"

#### Motor:

Horsepower ..... 1 HP  
Voltage ..... 110V  
Amps ..... 8A  
Speed ..... 3450 RPM  
Cycle ..... 60 Hz

#### Main Specifications:

Drum Rotation Speed ..... 30 RPM  
Total Drum Capacity ..... 6.36 Cubic Feet or Approximately ¼ Cubic Yard  
Maximum Recommended Capacity ..... 3.2 Cubic Feet or ⅛ Cubic Yard (Six 60 lb. Bags or Four 90 lb. Bags)



# SECTION 1: SAFETY

## **WARNING**

### **For Your Own Safety, Read Instruction Manual Before Operating this Machine**

The purpose of safety symbols is to attract your attention to possible hazardous conditions. This manual uses a series of symbols and signal words intended to convey the level of importance of the safety messages. The progression of symbols is described below. Remember that safety messages by themselves do not eliminate danger and are not a substitute for proper accident prevention measures.



Indicates an imminently hazardous situation which, if not avoided, **WILL** result in death or serious injury.



Indicates a potentially hazardous situation which, if not avoided, **COULD** result in death or serious injury.



Indicates a potentially hazardous situation which, if not avoided, **MAY** result in minor or moderate injury. It may also be used to alert against unsafe practices.

***NOTICE***

This symbol is used to alert the user to useful information about proper operation of the machine.

## **WARNING**

### **Safety Instructions for Machinery**

- 1. READ THE ENTIRE MANUAL BEFORE STARTING MACHINERY.** Machinery presents serious injury hazards to untrained users.
- 2. ALWAYS USE ANSI APPROVED SAFETY GLASSES WHEN OPERATING MACHINERY.** Everyday eyeglasses only have impact resistant lenses—they are NOT safety glasses.
- 3. ALWAYS WEAR A NIOSH APPROVED RESPIRATOR WHEN OPERATING MACHINERY THAT PRODUCES DUST.** Wood dust can cause severe respiratory illnesses.
- 4. ALWAYS USE HEARING PROTECTION WHEN OPERATING MACHINERY.** Machinery noise can cause permanent hearing loss.
- 5. WEAR PROPER APPAREL. DO NOT** wear loose clothing, gloves, neckties, rings, or jewelry that can catch in moving parts. Wear protective hair covering to contain long hair and wear non-slip footwear.
- 6. NEVER OPERATE MACHINERY WHEN TIRED OR UNDER THE INFLUENCE OF DRUGS OR ALCOHOL.** Be mentally alert at all times when running machinery.



# WARNING

## Safety Instructions for Machinery

7. **ONLY ALLOW TRAINED AND PROPERLY SUPERVISED PERSONNEL TO OPERATE MACHINERY.** Make sure operation instructions are safe and clearly understood.
8. **KEEP CHILDREN AND VISITORS AWAY.** Keep all children and visitors a safe distance from the work area.
9. **MAKE WORKSHOP CHILDPROOF.** Use padlocks, master switches, and remove start switch keys.
10. **NEVER LEAVE WHEN MACHINE IS RUNNING.** Turn power **OFF** and allow all moving parts to come to a complete stop before leaving machine unattended.
11. **DO NOT USE IN DANGEROUS ENVIRONMENTS.** DO NOT use machinery in damp, wet locations, or where any flammable or noxious fumes may exist.
12. **KEEP WORK AREA CLEAN AND WELL LIGHTED.** Clutter and dark shadows may cause accidents.
13. **USE A GROUNDED EXTENSION CORD RATED FOR THE MACHINE AMPERAGE.** Grounded cords minimize shock hazards. Undersized cords create excessive heat. Always replace damaged extension cords.
14. **ALWAYS DISCONNECT FROM POWER SOURCE BEFORE SERVICING MACHINERY.** Make sure switch is in OFF position before reconnecting.
15. **MAINTAIN MACHINERY WITH CARE.** Keep blades sharp and clean for best and safest performance. Follow instructions for lubricating and changing accessories.
16. **MAKE SURE GUARDS ARE IN PLACE AND WORK CORRECTLY BEFORE USING MACHINERY.**
17. **REMOVE ADJUSTING KEYS AND WRENCHES.** Make a habit of checking for keys and adjusting wrenches before turning machinery **ON**.
18. **CHECK FOR DAMAGED PARTS BEFORE USING MACHINERY.** Check for binding or misaligned parts, broken parts, loose bolts, and any other conditions that may impair machine operation. Repair or replace damaged parts before operation.
19. **USE RECOMMENDED ACCESSORIES.** Refer to the instruction manual for recommended accessories. Improper accessories increase risk of injury.
20. **DO NOT FORCE MACHINERY.** Work at the speed for which the machine or accessory was designed.
21. **SECURE WORKPIECE.** Use clamps or a vise to hold the workpiece when practical. A secured workpiece protects your hands and frees both hands to operate the machine.
22. **DO NOT OVERREACH.** Maintain stability and balance at all times.
23. **MANY MACHINES CAN EJECT WORKPIECES TOWARD OPERATOR.** Know and avoid conditions that cause the workpiece to "kickback."
24. **ALWAYS LOCK MOBILE BASES (IF USED) BEFORE OPERATING MACHINERY.**
25. **CERTAIN DUST MAY BE HAZARDOUS** to the respiratory systems of people and animals, especially fine dust. Be aware of the type of dust you are exposed to and always wear a respirator designed to filter that type of dust.



## WARNING

# Additional Safety for Cement Mixers

- 1. HAZARDOUS DUST.** All cement, mortar, grout, and silicate dusts are hazardous to respiratory systems. Protect yourself and any bystanders by always wearing a respirator approved to guard against these kinds of dusts.
- 2. PINCH/CRUSHING HAZARD AREA.** The drum has a noticeable ring of gear teeth around the circumference. The area where these teeth meet the driving gear is a severe pinch hazard. Keep hands, fingers, and all body parts away from these gear teeth and the driving gear to avoid injury from this hazard. *DO NOT operate the mixer with the gear cover/guard removed!*
- 3. CHILDREN.** Never allow children to play on, in, or with the cement mixer.
- 4. STORAGE.** Store the cement mixer with the drum in the down position and disconnected from power to reduce the risk of children climbing inside and injuring themselves.
- 5. ENTANGLEMENT.** The spinning drum and engaging gears present an entanglement hazard. When using the cement mixer, tie back long hair, roll up long sleeves, and remove loose clothing or jewelry to reduce the risk of an entanglement injury.
- 6. SERVICE & ADJUSTMENTS.** Like all machines, this machine presents a risk of injury if it is serviced or adjusted while it is connected to power. Disconnect power before doing any service, maintenance, or adjustments to reduce the risk of accidental injury.
- 7. WATER VS. ELECTRIC COMPONENTS.** The electric components are designed to resist accidental exposure to water, but they are not waterproof. Avoid intentionally getting the motor and switch wet to reduce the risk of shock or equipment damage. If the internal parts of these components do get wet, immediately disconnect power and allow the parts to completely dry before reconnecting the mixer to the power supply.

## WARNING

Like all machinery there is potential danger when operating this machine. Accidents are frequently caused by lack of familiarity or failure to pay attention. Use this machine with respect and caution to lessen the possibility of operator injury. If normal safety precautions are overlooked or ignored, serious personal injury may occur.

## CAUTION

No list of safety guidelines can be complete. Every shop environment is different. Always consider safety first, as it applies to your individual working conditions. Use this and other machinery with caution and respect. Failure to do so could result in serious personal injury, damage to equipment, or poor work results.



# SECTION 2: CIRCUIT REQUIREMENTS

---

---

## 110V Operation

---

---

### **WARNING**

Serious personal injury could occur if you connect the machine to the power source before you have completed the set up process. **DO NOT** connect the machine to the power source until instructed to do so.

### Amperage Draw

The Model H8172 motor draws the following amps under maximum load:

Motor Draw ..... 8 Amps

### Circuit Recommendations

We recommend connecting your machine to a dedicated and circuit that is rated for the amperage given below. Never replace a circuit breaker on an existing circuit with one of higher amperage without consulting a qualified electrician to ensure compliance with wiring codes. **If you are unsure about the wiring codes in your area or you plan to connect your machine to a shared circuit, consult a qualified electrician.**

110V Circuit..... 15 Amp

### Extension Cords

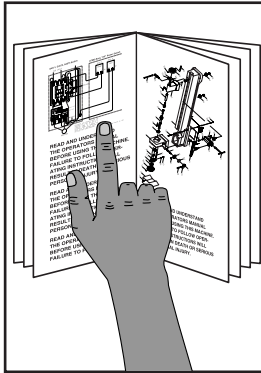
- Use at least a 14 gauge cord that does not exceed 100 feet in length!
- A qualified electrician **MUST** size cords over 50 feet long to prevent motor damage.





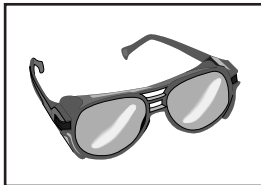
# SECTION 3: SETUP

## Setup Safety



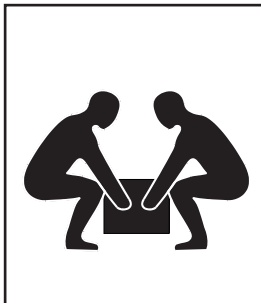
### **!WARNING**

This machine presents serious injury hazards to untrained users. Read through this entire manual to become familiar with the controls and operations before starting the machine!



### **!WARNING**

Wear safety glasses during the entire setup process!



### **!WARNING**

This machine and its components are very heavy. Get lifting help or use power lifting equipment such as a fork lift to move heavy items.

## Unpacking

Your machine was carefully packaged for safe transportation. Remove the packaging materials from around your machine and inspect it. If you discover the machine is damaged, *please immediately call Customer Service at (570) 546-9663 for advice.*

Save the containers and all packing materials for possible inspection by the carrier or its agent. *Otherwise, filing a freight claim can be difficult.*

When you are completely satisfied with the condition of your shipment, inventory the contents.

# Inventory

After all the parts have been removed from the carton, you should have:

Main Components (Figures 1 & 2)	Qty
A. Lower Drum.....	1
B. Motor Assembly.....	1
C. Tipping Wheel .....	1
D. Upper Drum.....	1
E. Support Leg.....	1
F. Frame .....	1
G. Axle Bracket.....	1
H. Mixing Blades.....	2
I. Wheels .....	2
J. Bearing Block .....	1
K. Upper Bracket .....	1
L. Gasket (not shown).....	1

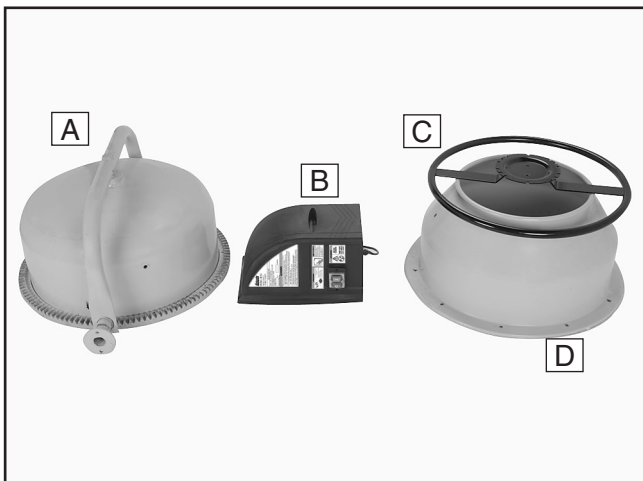


Figure 1. Inventory components picture 1.

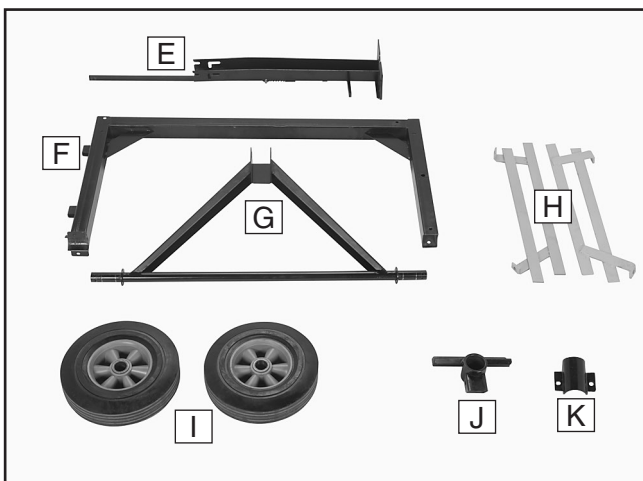


Figure 2. Inventory components picture 2.

Hardware	Qty
Hairpin Cotter Pin (Wheels) .....	2
Hex Bolts M8-1.25 x 65 (Leg to Frame).....	2
Flat Washers 8mm (Leg to Frame) .....	2
Lock Washers 8mm (Leg to Frame) .....	2
Hex Nuts M8-1.25 (Leg to Frame) .....	2
Hex Bolt M6-1 x 25 (Plunger Rods) .....	1
Lock Nut M6-1 (Plunger Rods).....	1
Cotter Pin (Plunger Rod).....	1
Hex Bolts M8-1.25 x 65 (Bracket to Frame) ....	2
Flat Washers 8mm (Bracket to Frame).....	2
Lock Washers 8mm (Bracket to Frame) .....	2
Hex Nuts M8-1.25 (Bracket to Frame) .....	2
Hex Bolts M8-1.25 x 60 (Bearing Block) .....	1
Flat Washers 8mm (Bearing Block) .....	1
Lock Washers 8mm (Bearing Block).....	1
Hex Nuts M8-1.25 (Bearing Block).....	1
Hex Bolts M8-1.25 x 20 (Upper Bracket) .....	2
Flat Washers 8mm (Upper Bracket).....	2
Lock Washers 8mm (Upper Bracket).....	2
Hex Nuts M8-1.25 (Upper Bracket).....	2
Phillips Screws M10-1.5 x 20 (Blade/Lower) ....	2
Plastic Washers 10mm (Blade/Lower) .....	2
Flat Washers 10mm (Blade/Lower).....	2
Lock Washers 10mm (Blade/Lower) .....	2
Hex Nuts M10-1.5 (Blade/Lower).....	2
Hex Bolts M8-1.25 x 20 (Drum Pieces).....	10
Flat Washers 8mm (Drum Pieces).....	10
Lock Washers 8mm (Drum Pieces) .....	10
Phillips Screws M10-1.5 x 20 (Blade/Upper) ....	2
Flat Washers 10mm (Blade/Upper).....	2
Lock Washers 10mm (Blade/Upper) .....	2
Hex Nuts M10-1.5 (Blade/Upper).....	2
Hex Bolt M8-1.25 x 65 (Motor Assembly) .....	1
Flat Washers 8mm (Motor Assembly).....	3
Lock Washers 8mm (Motor Assembly) .....	3
Hex Nuts M8-1.25 (Motor Assembly).....	3
Hex Bolts M8-1.25 x 20 (Tipping Wheel) .....	2
Flat Washers 8mm (Tipping Wheel).....	2
Lock Washers 8mm (Tipping Wheel).....	2
Hex Nuts M8-1.25 (Tipping Wheel).....	2

If any nonproprietary parts are missing (e.g. a nut or a washer), we will gladly replace them; or for the sake of expediency, replacements can be obtained at your local hardware store.

## NOTICE

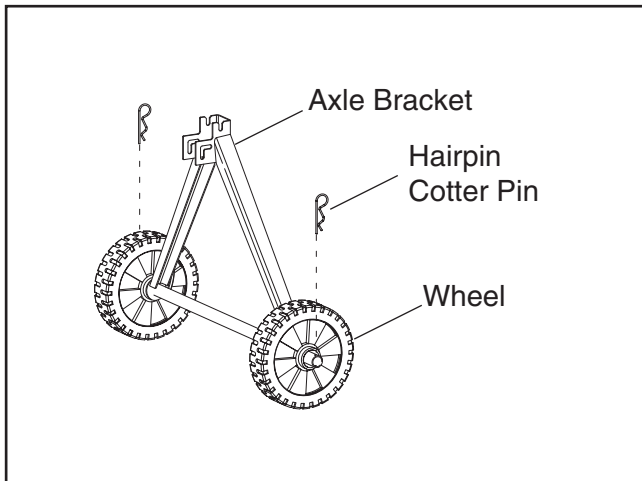
Some hardware/fasteners on the inventory list may arrive pre-installed. Check mounting locations before assuming that any items from the inventory list are missing.



# Assembly

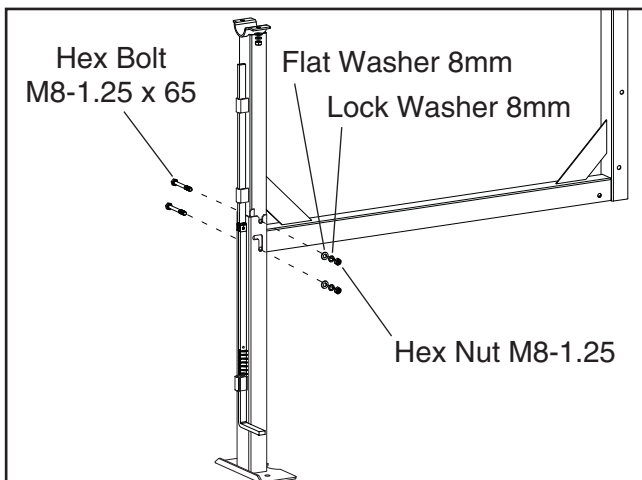
## To assemble the cement mixer:

1. Insert the wheels on the axles and secure them in place with the hairpin cotter pins, as shown in **Figure 3**.



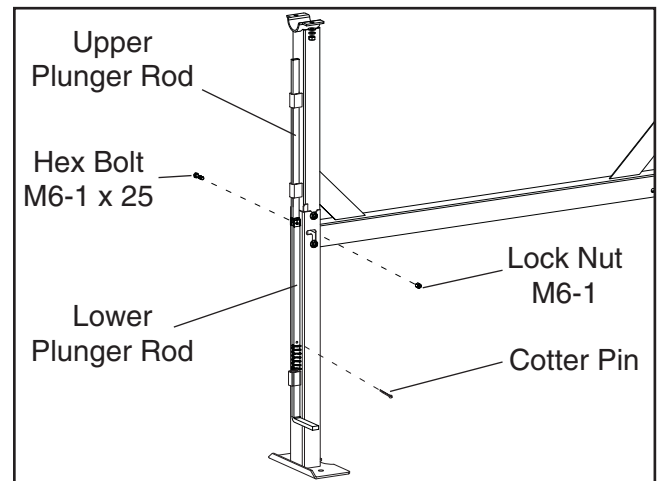
**Figure 3.** Wheels installed on axles.

2. Attach the support leg to the frame with two M8-1.25 x 65 hex bolts on one side and two 8mm flat washers, lock washers, and hex nuts on the other side (**Figure 4**).



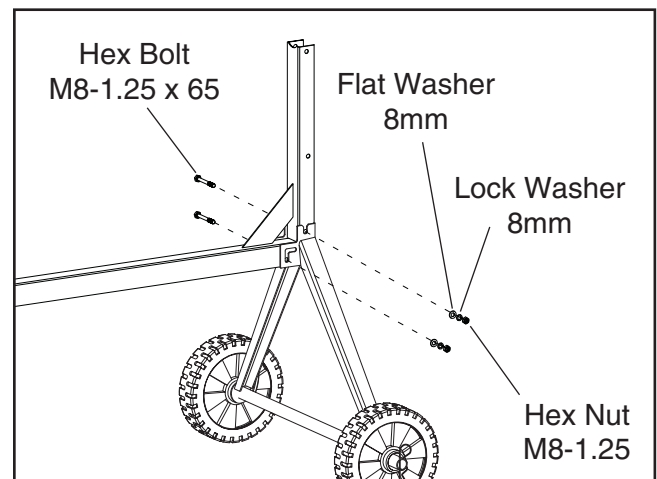
**Figure 4.** Support leg installation.

3. Connect the upper and lower plunger rods together with an M6-1 x 25 hex bolt and M6-1 lock nut, then insert the cotter pin where shown in **Figure 5**. Bend each leg of the cotter pin outward so it can't fall out.



**Figure 5.** Plunger rod installation.

4. Attach the axle bracket to the frame with two M8-1.25 x 65 hex bolts on one side and two 8mm flat washers, lock washers, and hex nuts on the other side (**Figure 6**).



**Figure 6.** Attaching axle bracket to frame.

5. With the help of another person, place the lower drum on the frame assembly, as shown in **Figure 7**. The gear guard **MUST** remain installed on the lower drum. If, for any reason, it is not installed in the location shown in **Figure 7**, then install it now.



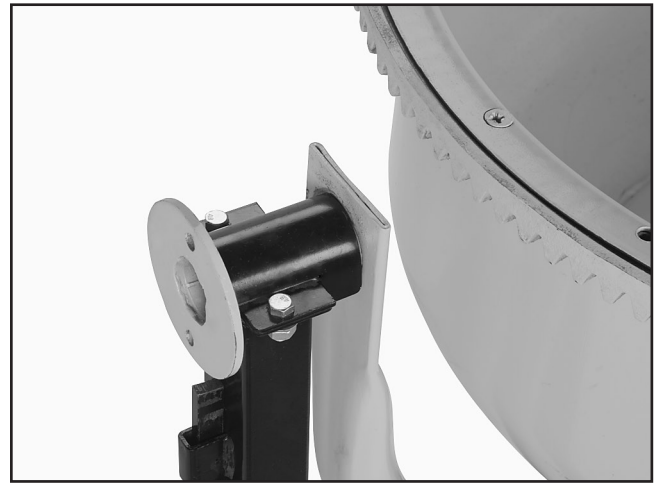
**Figure 7.** Lower drum on frame.

6. Attach the bearing block to the frame with one M8-1.25 x 60 hex bolt on one side and one 8mm flat washer, lock washer, and hex nut on the other side (**Figure 8**).



**Figure 8.** Bearing block installed over shaft and attached to frame.

7. Place the upper bracket over the pivot shaft, and attach the upper bracket to the frame with two M8-1.25 x 20 hex bolts on one side and two 8mm flat washers, lock washers, and hex nuts on the other side (**Figure 9**).



**Figure 9.** Upper bracket installed.

8. Attach the lower end of the mixing blades to the lower drum, placing a plastic washer between the mixing blade and the drum mounting holes (**Figure 10**). At each attachment, use an M10-1.5 x 20 Phillips head screw on one side and a 10mm flat washer, lock washer, and hex nut on the other side. *Leave the fasteners loose for now.*

**Note:** *Since these fasteners will be regularly exposed to water, we suggest coating them with anti-seize or bearing grease before assembly to prevent them from rusting together. Repeat this process on the fasteners used in **Steps 9–10**, as well.*



**Figure 10.** Lower end of mixing blades attached to lower drum.

9. Place the upper drum on the lower drum with the gasket between them. Align the arrows shown in **Figure 11**, and secure the upper and lower drum pieces together with ten M8-1.25 x 20 hex bolts, 8mm lock washers, and 8mm flat washers.

**Note:** Tighten these hex bolts progressively in a criss-cross pattern for even tension all the way around the drum.



**Figure 11.** Upper drum attached to lower drum.

10. Place a plastic washer between the mounting holes on the upper end of the mixing blades and the upper drum. Insert an M10-1.5 x 20 Phillips screw from the outside of the drum through each mixing blade. Secure each screw with a 10mm flat washer, lock washer, and hex nut from the inside (**Figure 12**). Completely tighten all the mixing blade fasteners now.



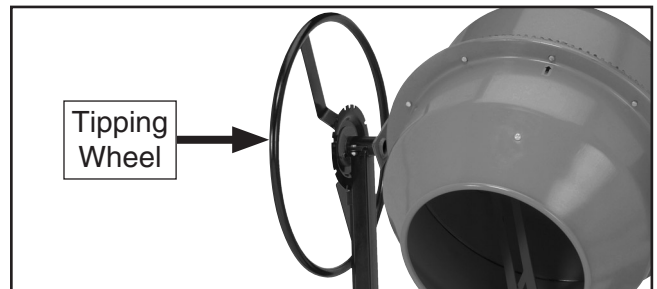
**Figure 12.** Upper part of mixing blades attached to upper drum.

11. Slide the motor assembly onto the bearing block shaft, then secure the motor assembly to the frame (**Figure 13**). Use two 8mm flat washers, lock washers, and hex nuts on the motor assembly studs. Slide the remaining M8-1.25 x 65 hex bolt through the motor assembly and frame, then secure on the other side with an 8mm flat washer, lock washer, and hex nut.



**Figure 13.** Motor assembly attached to frame.

12. Attach the tipping wheel to the lower drum pivot bar (**Figure 14**). Use two M8-1.25 x 20 hex bolts on one side and two 8mm flat washers, 8mm lock washers, and M8-1.25 hex nuts on the other side.



**Figure 14.** Tipping wheel attached.

## Test Run

Once the assembly is complete and you have read and understand this entire owner's manual, connect the machine to the power source, then test run the machine to make sure it runs properly.

If there is an unusual noise or vibration, stop using the machine immediately and inspect the machine for loose fasteners or improperly assembled pieces. If you still cannot remedy a problem, contact our Tech Support at (570) 546-9663 for assistance.



# SECTION 4: OPERATIONS

## Operation Safety

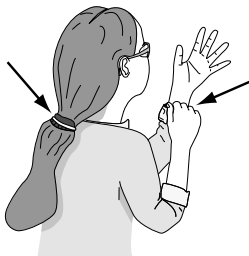
### **!WARNING**

Damage to your eyes and lungs could result from using this machine without proper protective gear. Always wear safety glasses and a respirator when operating this machine.



### **!WARNING**

Loose hair and clothing could get caught in machinery and cause serious personal injury. Keep loose clothing and long hair away from moving machinery.



### **NOTICE**

If you have never used this type of machine or equipment before, WE STRONGLY RECOMMEND that you read books, trade magazines, or get formal training before beginning any projects. Regardless of the content in this section, Grizzly Industrial will not be held liable for accidents caused by lack of training.

## Operation Tips

Follow the tips below when using the cement mixer:

- Before using your cement mixer, coat the inside of the mixing drum with a light layer of oil. Refer to **Lubrication** on **Page 13** for more details.
- Spray the inside surface of the cement mixer with a small amount of water before adding cement (in addition to the lubrication steps above). This will make it easier to clean after operation. *Avoid spraying water on the switch or motor cover!*
- The mixer works more effectively and quickly when batches are half the maximum recommended mixture load, or if mixture materials are added slowly (while mixing), rather than all at one time.
- The maximum recommended mixture load is 3.2 cubic feet. This equates to:
  - Six 60 lb. bags
  - Four 90 lb. bags

### **!CAUTION**

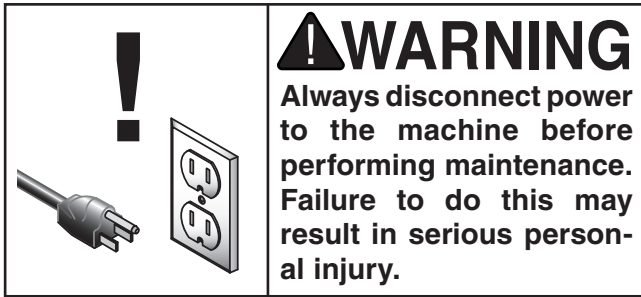
Do not put hands, shovels, or other tools into the mixing drum while it is turning, or injury or equipment damage may occur.

### **!CAUTION**

Children can hurt themselves if playing on this mixer. If this machine is not stored in a locked facility, always disconnect power when leaving it unattended.



# SECTION 5: MAINTENANCE



## Lubrication

Remove the gear cover/guard. Lubricate the driving gear with a high-quality multi-purpose grease. Re-install the gear cover/guard before reconnecting your machine to power.

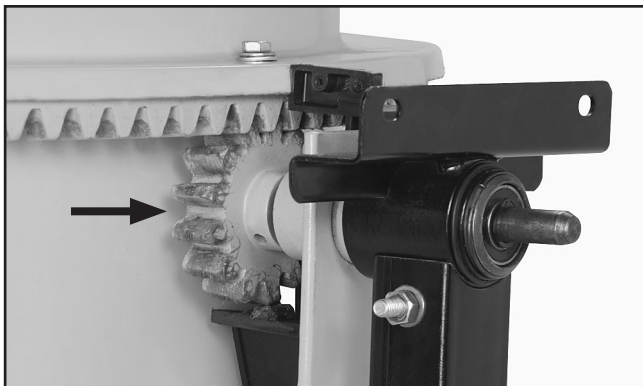


Figure 15. Driving gear.

Before every use, and while the mixing drum and blades are clean and dry, wipe down the inside of the mixing drum and blades with a light coat of motor, hydraulic, or vegetable oil. This will prevent most cement from sticking to these surfaces and will make cleaning very easy.

An alternative to coating the drum interior with oil is to spray the oil. Since most oils are too thick to spray, use a mixture of half oil and half diesel fuel. This is a common spray mixture used in commercial concrete construction to prevent sticking.

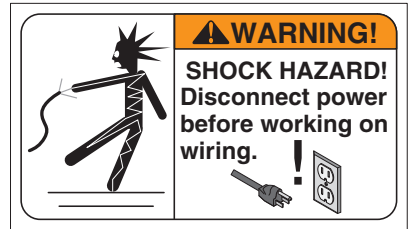
## Cleaning

- Always unplug the cement mixer before cleaning.
- Avoid getting water on the motor or switch while cleaning. If you do, allow the components to thoroughly dry before plugging in the motor.
- The easiest way to clean the drum is by hosing it out with water. (Cleaning is made much easier if you follow the **Lubrication** procedures in this section before using your cement mixer.)
- Always clean the mixing drum immediately after using it. As a general rule, the sooner you clean, the easier it will be.
- For tough to remove buildup, use a stiff bristle brush or a rag to make cleaning easier.
- Small, hardened cement splatters usually can be removed by rubbing with a dry rag.
- Hardened cement can be scraped, chiseled or pounded off with a hammer; however, these actions **WILL** damage the surface area of the drum, making it harder to clean in the future.

## Drive Belt

Avoid getting grease or oil on the drive belt or pulleys. Check the drive belt, as part of a monthly inspection for proper tension and belt condition. Cracking and glazing could result in belt failure. Replace the belt if such conditions appear.

# Wiring Diagram



COLOR KEY	
BLACK	
WHITE	
BLUE	

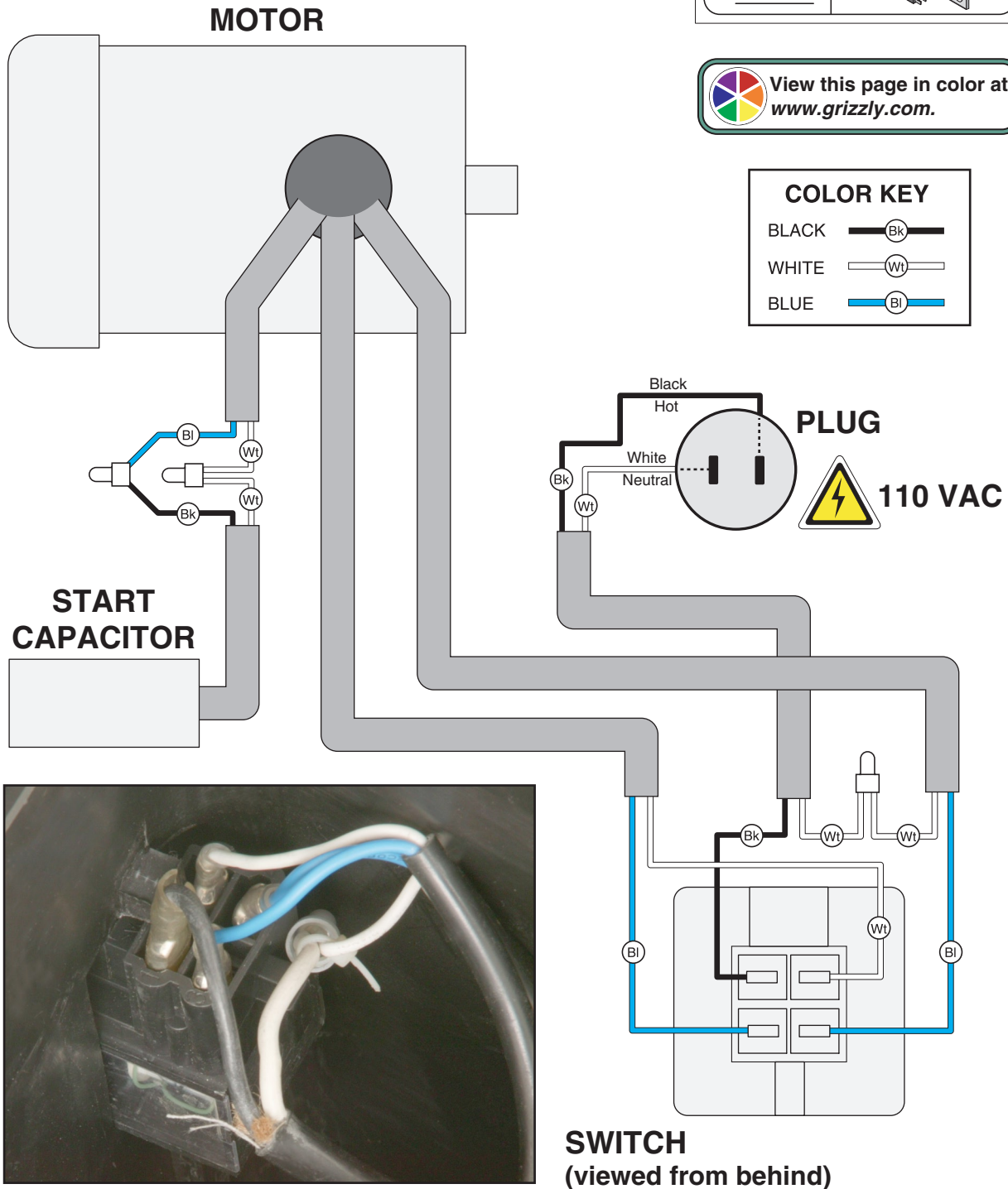
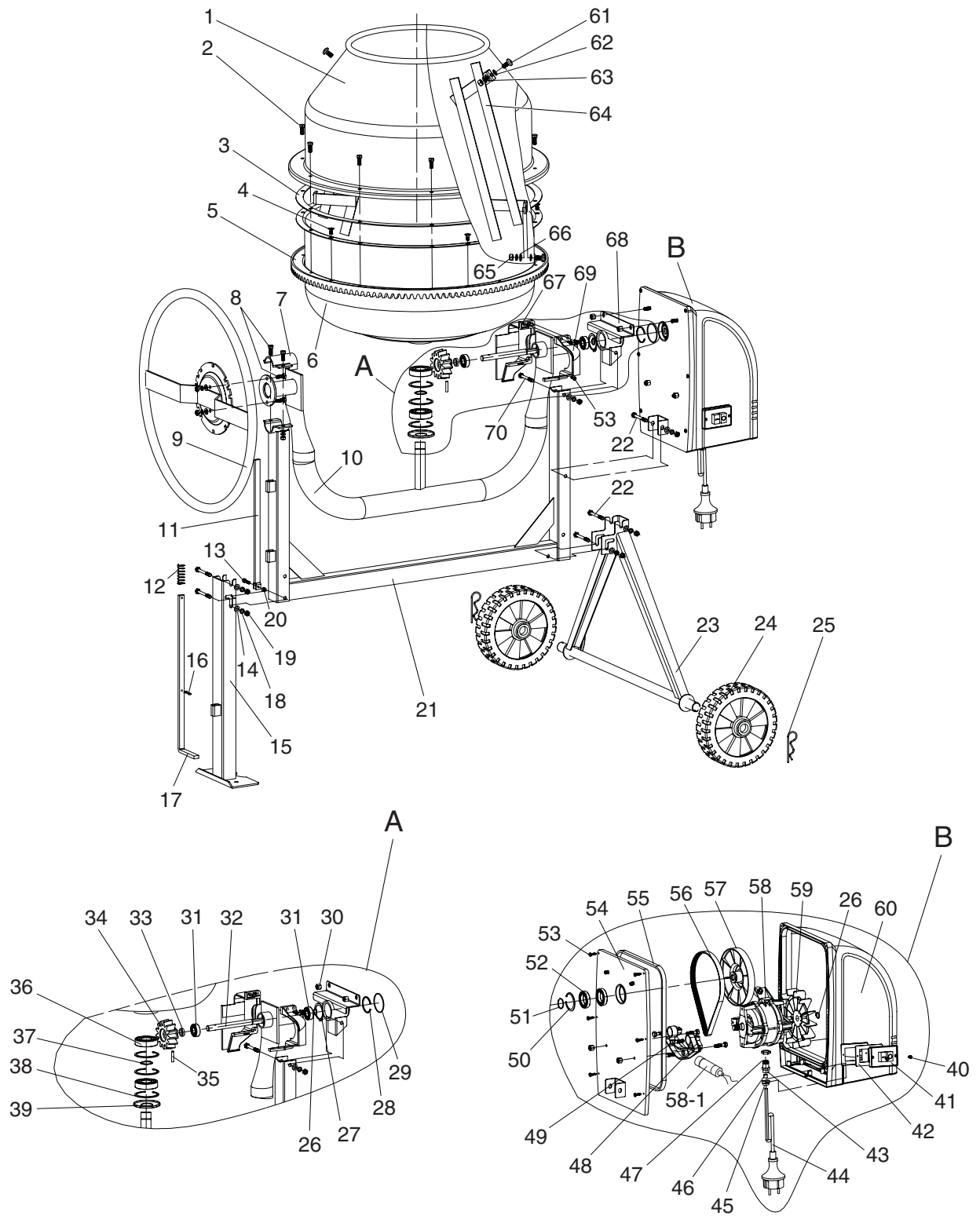


Figure 16. Switch wiring.





# Parts Breakdown



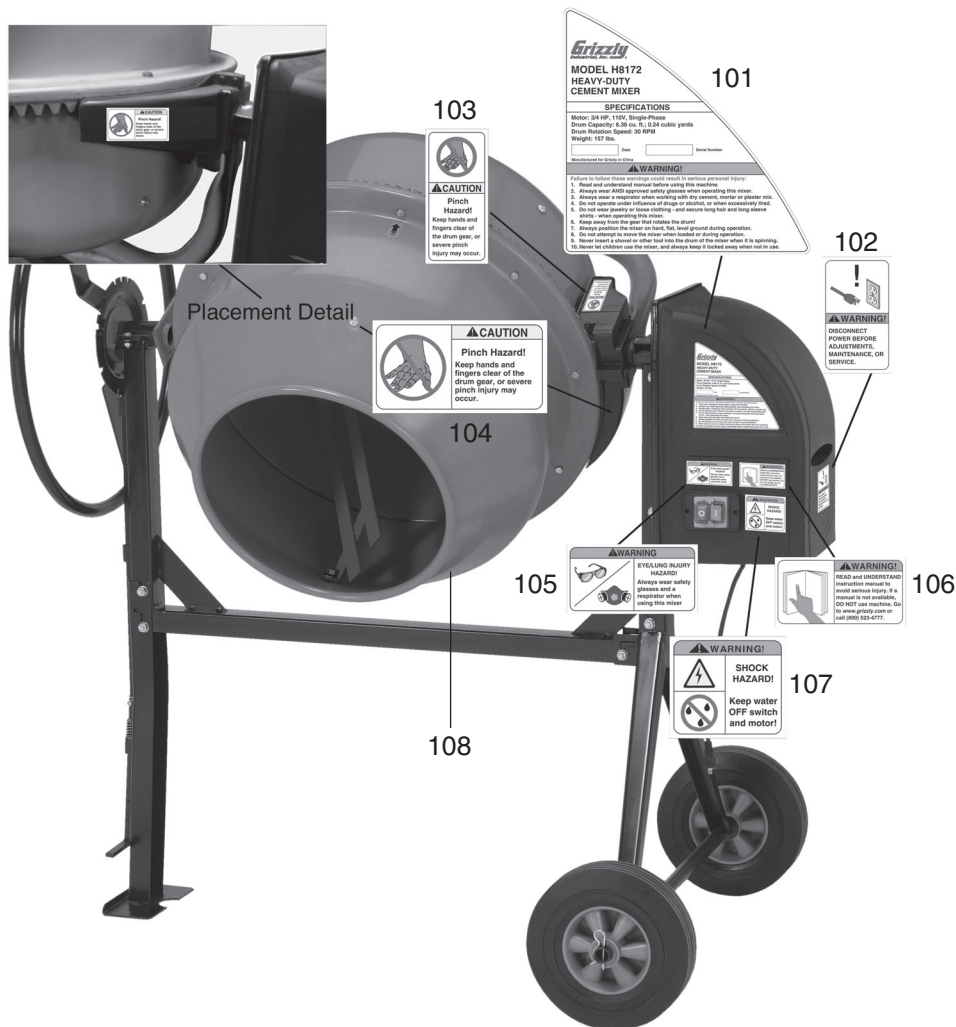
# Parts Breakdown

REF	PART #	DESCRIPTION
1	PH8172001	UPPER DRUM
2	PB03M	HEX BOLT M8-1.25 X 16
3	PH8172003	RUBBER GASKET
4	PFH28M	FLAT HD SCR M8-1.25 X 10
5	PH8172005	BIG COGWHEEL
6	PH8172006	LOWER DRUM
7	PH8172007	UPPER BRACKET
8	PB09M	HEX BOLT M8-1.25 X 20
9	PH8172009	TIPPING WHEEL
10	PH8172010	SUPPORT ARM
11	PH8172011	UPPER PLUNGER ROD
12	PH8172012	COMPRESSION SPRING
13	PB10M	HEX BOLT M6-1 X 25
14	PW01M	FLAT WASHER 8MM
15	PH8172015	SUPPORT LEG
16	PH8172016	COTTER PIN 4 X 20
17	PH8172017	LOWER PLUNGER ROD
18	PLW04M	LOCK WASHER 8MM
19	PN03M	HEX NUT M8-1.25
20	PLN03M	LOCK NUT M6-1
21	PH8172021	FRAME
22	PH8172022	HEX BOLT M8-1.25 X 70
23	PH8172023	AXLE BRACKET
24	PH8172024	WHEEL
25	PH8172025	HAIR PIN COTTER PIN 3MM
26	PR05M	EXT RETAINING RING 15MM
27	PR62M	EXT RETAINING RING 42MM
28	PH8172028	CIRCLIP 42MM
29	PH8172029	O-RING 42 X 2.65
30	PLN04M	LOCK NUT M8-1.25
31	P6202	BALL BEARING 6202ZZ
32	PH8172032	DRIVE SHAFT
33	PH8172033	SLEEVE
34	PH8172034	DRIVE PINION
35	PH8172035	LOCK PIN 6 X 30
36	P6206	BALL BEARING 6206ZZ

REF	PART #	DESCRIPTION
37	PR15M	EXT RETAINING RING 30MM
38	PR38M	INT RETAINING RING 62MM
39	PH8172039	DUSTPROOF COVER
40	PHTEK2M	TAP SCREW M3.5 X 16
41	PH8172041	SWITCH
42	PH8172042	GASKET
43	PH8172043	STRAIN RELIEF BOLT
44	PH8172044	POWER CORD
45	PH8172045	STRAIN RELIEF NUT
46	PH8172046	STRAIN RELIEF RUBBER
47	PH8172047	STRAIN RELIEF NUT
48	PH8172048	MOTOR MOUNT BRACKET
49	PB26M	HEX BOLT M8-1.25 X 30
50	PR25M	INT RETAINING RING 47MM
51	PH8172051	CIRCLIP 30MM
52	P6906	BALL BEARING 6906ZZ
53	PHTEK19M	TAP SCREW M5 X 16
54	PH8172054	END PLATE
55	PH8172055	GASKET
56	PH8172056	BELT
57	PH8172057	IDLE PULLEY
58	PH8172058	MOTOR 110V
58-1	PC030A	S CAPACITOR 30MFD 300VAC
59	PH8172059	MOTOR FAN
60	PH8172060	MOTOR COVER
61	PS35M	PHLP HD SCR M10-1.5 X 20
62	PH8172062	PVC WASHER 10MM
63	PLW06M	LOCK WASHER 10MM
64	PH8172064	MIXING BLADE
65	PN02M	HEX NUT M10-1.5
66	PW04M	FLAT WASHER 10MM
67	PH8172067	SHORT GEAR GUARD
68	PH8172068	BEARING BLOCK
69	PH8172069	GEAR GUARD
70	PB164M	HEX BOLT M8-1.25 X 70



# Safety Labels Breakdown



REF	PART #	DESCRIPTION
101	PH8172101	MACHINE ID LABEL
102	PH8172102	SMALL DISCONNECT PWR LABEL
103	PH8172103	SMALL DRUM PINCH LABEL
104	PH8172104	LARGE DRUM PINCH LABEL

REF	PART #	DESCRIPTION
105	PH8172105	SMALL EYE/LUNG LABEL
106	PH8172106	SMALL READ MANUAL LABEL
107	PH8172107	MOTOR/WATER SHOCK LABEL
108	PPAINT-1	GRIZZLY GREEN TOUCH-UP PAINT

## ⚠️ WARNING

Safety labels warn about machine hazards and ways to prevent injury. The owner of this machine **MUST** maintain the original location and readability of the labels on the machine. If any label is removed or becomes unreadable, **REPLACE** that label before using the machine again. Contact Grizzly at (800) 523-4777 or [www.grizzly.com](http://www.grizzly.com) to order new labels.



# WARRANTY AND RETURNS

---

Grizzly Industrial, Inc. warrants every product it sells for a period of **1 year** to the original purchaser from the date of purchase. This warranty does not apply to defects due directly or indirectly to misuse, abuse, negligence, accidents, repairs or alterations or lack of maintenance. This is Grizzly's sole written warranty and any and all warranties that may be implied by law, including any merchantability or fitness, for any particular purpose, are hereby limited to the duration of this written warranty. We do not warrant or represent that the merchandise complies with the provisions of any law or acts unless the manufacturer so warrants. In no event shall Grizzly's liability under this warranty exceed the purchase price paid for the product and any legal actions brought against Grizzly shall be tried in the State of Washington, County of Whatcom.

We shall in no event be liable for death, injuries to persons or property or for incidental, contingent, special, or consequential damages arising from the use of our products.

To take advantage of this warranty, contact us by mail or phone and give us all the details. We will then issue you a "Return Number," which must be clearly posted on the outside as well as the inside of the carton. We will not accept any item back without this number. Proof of purchase must accompany the merchandise.

The manufacturers reserve the right to change specifications at any time because they constantly strive to achieve better quality equipment. We make every effort to ensure that our products meet high quality and durability standards and we hope you never need to use this warranty.

Please feel free to write or call us if you have any questions about the machine or the manual.

Thank you again for your business and continued support. We hope to serve you again soon.



**Grizzly** **WARRANTY CARD**  
Industrial, Inc.

Name \_\_\_\_\_  
 Street \_\_\_\_\_  
 City \_\_\_\_\_ State \_\_\_\_\_ Zip \_\_\_\_\_  
 Phone # \_\_\_\_\_ Email \_\_\_\_\_ Invoice # \_\_\_\_\_  
 Model # \_\_\_\_\_ Order # \_\_\_\_\_ Serial # \_\_\_\_\_

*The following information is given on a voluntary basis. It will be used for marketing purposes to help us develop better products and services. **Of course, all information is strictly confidential.***

1. How did you learn about us?
 

<input type="checkbox"/> Advertisement	<input type="checkbox"/> Friend	<input type="checkbox"/> Catalog
<input type="checkbox"/> Card Deck	<input type="checkbox"/> Website	<input type="checkbox"/> Other:
  
2. Which of the following magazines do you subscribe to?
 

<input type="checkbox"/> Cabinet Maker	<input type="checkbox"/> Popular Mechanics	<input type="checkbox"/> Today's Homeowner
<input type="checkbox"/> Family Handyman	<input type="checkbox"/> Popular Science	<input type="checkbox"/> Wood
<input type="checkbox"/> Hand Loader	<input type="checkbox"/> Popular Woodworking	<input type="checkbox"/> Wooden Boat
<input type="checkbox"/> Handy	<input type="checkbox"/> Practical Homeowner	<input type="checkbox"/> Woodshop News
<input type="checkbox"/> Home Shop Machinist	<input type="checkbox"/> Precision Shooter	<input type="checkbox"/> Woodsmith
<input type="checkbox"/> Journal of Light Cont.	<input type="checkbox"/> Projects in Metal	<input type="checkbox"/> Woodwork
<input type="checkbox"/> Live Steam	<input type="checkbox"/> RC Modeler	<input type="checkbox"/> Woodworker West
<input type="checkbox"/> Model Airplane News	<input type="checkbox"/> Rifle	<input type="checkbox"/> Woodworker's Journal
<input type="checkbox"/> Modeltec	<input type="checkbox"/> Shop Notes	<input type="checkbox"/> Other:
<input type="checkbox"/> Old House Journal	<input type="checkbox"/> Shotgun News	
  
3. What is your annual household income?
 

<input type="checkbox"/> \$20,000-\$29,000	<input type="checkbox"/> \$30,000-\$39,000	<input type="checkbox"/> \$40,000-\$49,000
<input type="checkbox"/> \$50,000-\$59,000	<input type="checkbox"/> \$60,000-\$69,000	<input type="checkbox"/> \$70,000+
  
4. What is your age group?
 

<input type="checkbox"/> 20-29	<input type="checkbox"/> 30-39	<input type="checkbox"/> 40-49
<input type="checkbox"/> 50-59	<input type="checkbox"/> 60-69	<input type="checkbox"/> 70+
  
5. How long have you been a woodworker/metalworker?
 

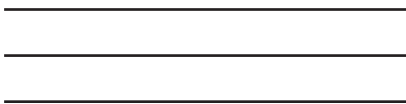
<input type="checkbox"/> 0-2 Years	<input type="checkbox"/> 2-8 Years	<input type="checkbox"/> 8-20 Years	<input type="checkbox"/> 20+ Years
------------------------------------	------------------------------------	-------------------------------------	------------------------------------
  
6. How many of your machines or tools are Grizzly?
 

<input type="checkbox"/> 0-2	<input type="checkbox"/> 3-5	<input type="checkbox"/> 6-9	<input type="checkbox"/> 10+
------------------------------	------------------------------	------------------------------	------------------------------
  
7. Do you think your machine represents a good value?     Yes                       No
  
8. Would you recommend Grizzly Industrial to a friend?     Yes                       No
  
9. Would you allow us to use your name as a reference for Grizzly customers in your area?  
**Note: We never use names more than 3 times.**                       Yes                       No

10. Comments: \_\_\_\_\_  
 \_\_\_\_\_  
 \_\_\_\_\_

CUT ALONG DOTTED LINE

FOLD ALONG DOTTED LINE



Place  
Stamp  
Here



**GRIZZLY INDUSTRIAL, INC.**  
**P.O. BOX 2069**  
**BELLINGHAM, WA 98227-2069**



FOLD ALONG DOTTED LINE

Send a Grizzly Catalog to a friend:

Name _____
Street _____
City _____ State _____ Zip _____

TAPE ALONG EDGES--PLEASE DO NOT STAPLE



# *grizzly.com*

**TOOL WEBSITE**

Buy Direct and Save with Grizzly® – Trusted, Proven and a Great Value!

*Visit Our Website Today And Discover  
Why Grizzly® Is The Industry Leader!*

- SECURE ORDERING
- ORDERS SHIPPED WITHIN 24 HOURS
- E-MAIL RESPONSE WITHIN ONE HOUR

-OR-

Call Today For A **FREE**  
Full Color Catalog

**1-800-523-4777**





## Free Manuals Download Website

<http://myh66.com>

<http://usermanuals.us>

<http://www.somanuals.com>

<http://www.4manuals.cc>

<http://www.manual-lib.com>

<http://www.404manual.com>

<http://www.luxmanual.com>

<http://aubethermostatmanual.com>

Golf course search by state

<http://golfingnear.com>

Email search by domain

<http://emailbydomain.com>

Auto manuals search

<http://auto.somanuals.com>

TV manuals search

<http://tv.somanuals.com>