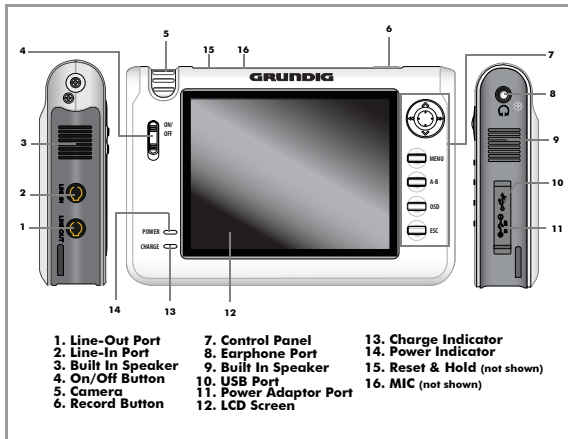


QUICK START GUIDE**VP 6200/30GB****Step 1. Location of controls**

Note: See the User Guide for full details of connections and features on your Personal Media Player.

Customer Helpline: 0870 920 1101

Download from [Www.Somanuals.com](http://www.Somanuals.com). All Manuals Search And Download.

QUICK START GUIDE

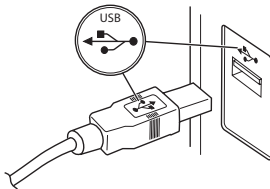
Step 2. Connecting to your PC

Note: If you are running a Windows version previous to Windows 2000, you will need to install the drivers from the supplied CD.

Connect USB extension lead to the Media Player



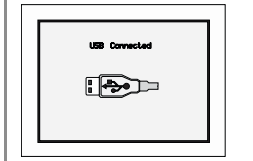
Plug the USB extension lead into your PC's USB port



When the Media Player is connected successfully, your PC will show:



When the Media Player is connected successfully the Media Player will show:



Customer Helpline: 0870 920 1101

Download from www.somanuals.com. All Manuals Search And Download.

QUICK START GUIDE

Step 3. Transferring media files

Open 'My Computer' on your PC.



My Computer

Your Media Player will appear as PMP Grundig Drive. Open the new drive.

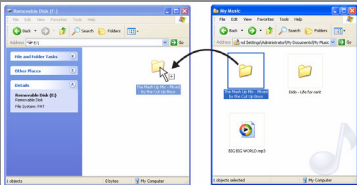


PMP Grundig (F:)

Note: the above drive letter (F:) is an example and may differ on your PC.



The new drive will consist of different media folders. Open the desired folder.



You can now 'drag and drop' files from your PC to the Media Player.

Note: the above is an example. Only 'drag and drop' the correct file to folder, for example MP3 files to Music folder or photos or images to the Image folder.

Customer Helpline: 0870 920 1101

Download from [Www.Somanuals.com](http://www.Somanuals.com). All Manuals Search And Download.

QUICK START GUIDE

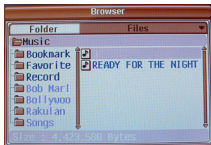
Step 4. Using your Media Player



Switch the Media Player ON. The 'GRUNDIG' logo will appear, followed by the MENU screen:



Use the 'Jog Stick' left or right to select the desired media. and press the 'Jog Stick' to enter. The following screen will appear:



Note: Audio media has been shown as an example.

Use the 'Jog Stick' to highlight the desired file and press the 'Jog Stick', the following screen will appear. (for audio files only).



Note: See the User Manual for full details and features on your Personal Media Player.

Customer Helpline: 0870 920 1101

Free Manuals Download Website

<http://myh66.com>

<http://usermanuals.us>

<http://www.somanuals.com>

<http://www.4manuals.cc>

<http://www.manual-lib.com>

<http://www.404manual.com>

<http://www.luxmanual.com>

<http://aubethermostatmanual.com>

Golf course search by state

<http://golfingnear.com>

Email search by domain

<http://emailbydomain.com>

Auto manuals search

<http://auto.somanuals.com>

TV manuals search

<http://tv.somanuals.com>