

HAAN

Garment Steamer

USER MANUAL

GS-30

PROFESSIONAL
GARMENT STEAMER



HAAN CORPORATION

IMPORTANT SAFETY INSTRUCTIONS

When using your appliance, basic precautions should always be followed, including the following:

1. Read all instructions.
2. Use appliance for its intended use only.
3. This appliance is not designed to be used by people (including children) with a physical, sensory or mental impairment, or people without knowledge or experience, unless they are supervised or given prior instructions concerning the use of the appliance by someone responsible for their safety.
4. Children must be supervised to ensure that they do not play with the appliance.
5. Do not leave any appliance unattended while plugged in or while it is still hot.
6. Do not operate any appliance with a damaged cord, plug or steam hose or after the appliance malfunctions, or is dropped or damaged in any manner.
7. To reduce the risk of electric shock, do not disassemble or attempt to repair the appliance. Return appliance to nearest authorized service center for examination, repair or adjustment.
8. To reduce the risk of contact with hot water emitting from steam vents, check appliance before each use by holding it away from body.
9. Steam only in an up and down vertical motion. Never use steam head in a horizontal position or tilt into a backward position, this may result in hot water discharge.
10. To reduce the risk of electric shock, do not immerse the appliance in water or other liquids.
11. Appliance should always be turned off before plugging or unplugging. Never yank the cord to disconnect from outlet, instead grasp plug and pull to disconnect.
12. Do not allow cord to touch hot surfaces. Let appliance cool completely before putting away.
13. Loop cord loosely under the appliance when storing.
14. Do not let power cord contact sharp edges or hot surfaces.
15. Do not try to fasten the nozzle hose guide during operation. Scalding may occur if the nozzle hose guide is removed while using the appliance.
16. Always disconnect appliance from electrical outlet when filling with water, emptying or when not in use.
17. Burns can occur from touching hot parts, hot water or steam. Always use care when you empty a steam appliance. There may be hot water in the reservoir.
18. Do not direct steam at people or animals, or steam clothes while they are being worn.
19. This is a floor appliance and should never be carried while in use.

SPECIAL INSTRUCTIONS

1. This is a 1200-watt appliance. To avoid a circuit overload, do not operate another high wattage appliance on the same circuit.
2. If an extension cord is absolutely necessary, the electrical rating should be at least as great as the electrical rating of the appliance. Cords rated for less currency may overheat. Care should be taken to arrange the cord so that it cannot be pulled or tripped over.
3. Do not cut or attempt to extend the steaming hose.
4. To reduce the risk of electric shock, this appliance has a polarized plug (One blade is wider than the other). This plug will fit in a polarized outlet only one way. If the plug does not fit fully in the outlet, reverse the plug. If it still does not fit, contact a qualified electrician to install the proper outlet. Do not change the plug in any way.

SAVE THESE INSTRUCTIONS

FOR HOUSEHOLD USE ONLY

Commercial use of this unit voids the manufacturer's warranty.

SETUP



Crease Making Tool



▶ Attach to the handle to use with shirt cuffs and collars and/or creating creases in pants.

Lint Removal Brush



▶ Attach to the handle to remove dust or lint attached to clothing.

Bristle Brush



▶ Attach to the handle to use when tidying clothing.

Crease Clip



▶ Use to make creases in dress shirts and/or pants.

Pressing Glove



▶ Make sure to put on the pressing glove when using this product.
(Exercise care as exposure in excess of one minute of the pressing glove to steam can result in burn injuries).



Align properly from the bottom and press firmly to hear a snapping sound as it fastens into place.

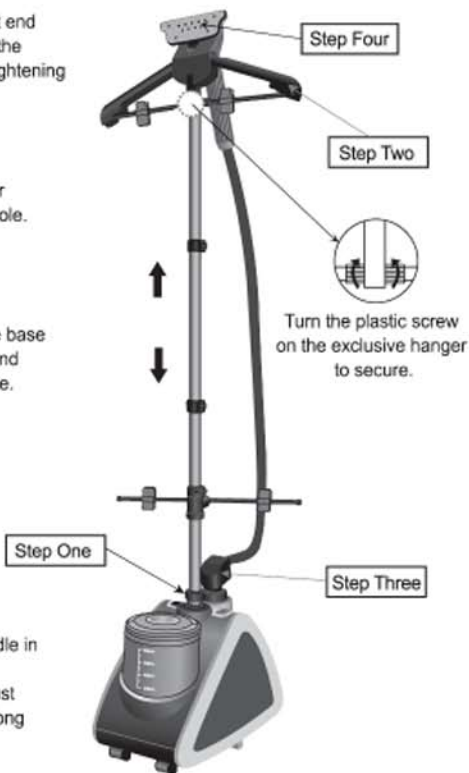
ASSEMBLY

- Step One - Insert the widest end of the telescoping pole into the main unit and secure it by tightening the nut.

- Step Two - Insert the hanger assembly to the top of the pole.

- Step Three - Insert the hose base into the main unit opening and turn it clockwise until in place.

- Step Four - Secure the handle in place between the prongs above the hanger, then adjust the height using the clips along the telescopic pole.



STEAM PRESS PRE-USE INSPECTION



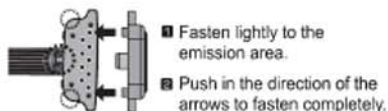
- 1 Check to see if any water is leaking from the excess water removal valve.
* Firmly shut the excess water removal valve.



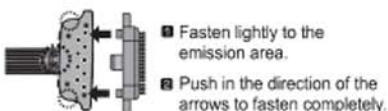
- 2 When inserting the water tank into the main unit, make sure the water has not overflowed.
* Make sure the power is off.
(Note: If water overflows, contact HAAN Customer Care).

BRUSH ASSEMBLY

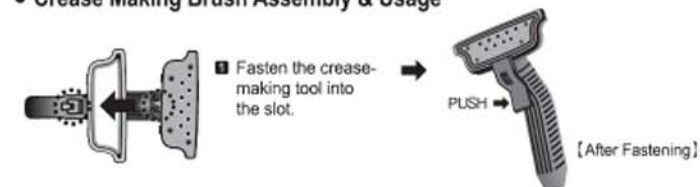
• Lint Removal Brush Assembly



• Bristle Brush Assembly



• Crease Making Brush Assembly & Usage



WATER DRAINING

1. Cool the garment steamer for at least 30 minutes after each use.
2. Open the excess water removal valve and empty any water remaining in the heater of the main unit.
3. Clean and remove water from the area between the main unit and the water tank to prevent buildup.



STEAM PRESS USAGE



- Turn and uncap the water refill valve on the removable water tank.



- Fill the water tank with cold water only.



- Fill the water tank to the level according to the desired usage time. A full water tank is capable of continuous steam release for 60 minutes.



- Align the water refill valve cap properly and screw securely shut.



- Hold the water tank by its handle and insert securely into the slot in the main unit.



- Steam can be released 40–50 seconds after pressing the power button. Pressing the power button again turns the power off. Refill the water tank with water when the water refill indicator light turns on.

Before use

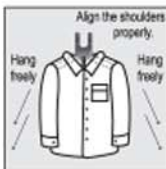
Please read the instructions for use and **Important Safety Instructions** carefully.

- Remove any packaging from the appliance.

-DO NOT PLUG IN OR TURN ON UNTIL ASSEMBLY IS COMPLETE.

- Press the hose guide in the direction of the arrow and turn clockwise until fastened.
- Steam can be released 40–50 seconds after pressing the power button; pressing the power button once more turns the power off.
- Place the handle on the exclusive hanger stand so that the hose is well extended. The normally stiff hose becomes highly flexible when steam is emitted, making it easier to use.

EFFICIENT GARMENT STEAMING



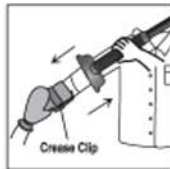
- Extend both sides of the hanger. Turn the grooved tubes on each side of the support to fasten, then hang the steam head between the prongs at the top.
- Align the shoulders of the garment on the hanger and allow it to hang freely.
- When pressing clothing, temperature, humidity and pressure are important. Because the steam released is of high temperature (212°F), temperature and humidity conditions for easy pressing are sufficient. Since clothing is hung from the support and hangs freely, the pressure on the garment may be weak. Thus, one hand should control the handle of the steam head and the other hand should be placed in the pressing glove, as shown in the image, to hold the garment steamer and allow for pressure to be applied. The hand holding the handle and hand holding the garment should move in unison to facilitate quick and easy pressing.

Practice by Repetition

As with regular ironing, the steam pressing process requires some getting used to. Practice by repeating the process a number of times can quickly facilitate easy steam pressing.



- When pressing clothing, move the handle lightly in upward and downward movements only.
(Note: Shaking the handle and/or moving it from side to side can result in water droplet creation on the steam release openings.)
- If the hose becomes bent during use (e.g. when pressing the lower portion of garments), a gargling noise may be heard and it could lead to the collection of water droplets in the steam release handle. If the hose is bent, the steam spray could be temporarily weakened.



- If the above occurs, hold the handle up for 2-3 seconds, after which it should be tapped lightly on the palm of one hand while in an upright position in order to loosen the collected water droplets. The water is sent back into the main unit, and water droplets are not formed during pressing.
- When pressing clothing, put on the pressing glove, and use the crease clip to easily create creases.

CLEANING MINERAL DEPOSITS

One common problem with a steamer is mineral deposits caused by a high mineral content in many municipal water supplies. Mineral residue inside of the internal pipes and heater can cause intermittent steaming or, in some cases, no steaming at all.

NOTE: To reduce or eliminate the occurrence of mineral deposits, we recommend the use of de-mineralized or distilled water in the unit. However, regular tap water can also be used.

STEAMER MAINTENANCE

Clean and rinse your steamer regularly:

All steamers need to be cleaned and rinsed on occasion to remove mineral deposits. If steam from the steamer becomes intermittent or stops altogether, please refer to the section on cleaning of mineral deposits.

Never use additives:

Additives such as salt, perfumes and dyes should never be added to the water tank. These substances will corrode or clog internal parts.

Steam in a vertical, upright position:

Do not use the steamer in a horizontal position like an iron. Steam in a vertical up and down motion. This will allow the condensation in the hose to flow back into the steamer.

Do not pull the steamer by the power cord:

Pulling the steamer by the power cord may cause the internal wiring to become loose.

Storing the steamer:

Before storing the steamer for an extended period (30 days or more), empty all water from the unit. Water becomes stale with time and may clog internal parts.

TROUBLESHOOTING

Issue / Question	Solution
Steam release has been decreased.	Since the water tank is likely empty, refill it and then turn the steam press back on.
The hose makes a gargling noise, and water droplets have collected in the handle.	If the hose is used for a substantial time in a bent state, a gargling noise is emitted, and water droplets collect in the handle. When this happens, extend the hose upward so it is not bent and hold for 2~3 seconds.
Water droplets appear on the steam head.	Hang hose at top of hanger for 30 seconds to clear passageway for the steam.
Should the water tank be filled with only cold water?	Yes, fill the water tank only with cold water.
Power light is not turned on and steam unit does not seem to be producing steam.	Check the outlet to see if power supply is normal. Connect another electric device to the outlet and check to see if power can be turned on. If still not power, phone HAAN Customer Care.

For all other issues and questions, please contact HAAN Customer Care.

1 877-HAAN-DIRECT

(1-877-422-6347)

One Year Limited Warranty

Your HAAN Garment Steamer is warranted to be free from defects in material and workmanship for a period of one (1) year from the date of purchase when utilized for normal household use by the original purchaser only. The included Warranty Registration Card must be filled out and returned within 10 days of purchase. This is essential for your warranty to be effective, should any problem arise with this product.

Should any defect covered by the terms of the limited warranty be discovered within one year, HAAN Corporation will repair or replace the defective part provided the unit is returned by the original purchaser to:

HAAN Corporation, 44 North Queen Street, Lancaster, PA 17603 USA

Proof of purchase date or prior warranty registration must be included.

The liability under this warranty is limited solely to the cost of the replacement parts or the complete unit at our option.

This warranty is extended to the original purchaser of the unit and excludes all other legal and/or conventional warranties. The responsibility of HAAN Corporation, if any, is limited to the specific obligations expressly assumed by it under the term of the limited warranty. In no event is HAAN Corporation liable for incidental or consequential damages of any nature whatsoever. Some states/provinces do not permit the exclusion or limitation of incidental or consequential damages, so the above may not apply to you. This warranty gives you specific legal rights which vary from state to state or province to province.

Important: Carefully pack item to avoid damage in shipping. Be sure to attach tag to item before packing with your name, complete address and phone number, and a note giving purchase information, model number and a description of the problem.

We recommend you insure the package (as damage in shipping is not covered by our warranty). Mark the outside of your package "ATTENTION: WARRANTY DEPT".

We are constantly striving to improve our products therefore the specifications contained herein are subject to change without notice.

OWNERSHIP REGISTRATION CARD

Please fill out and mail the product registration card within ten (10) days of purchase in order to validate the foregoing Limited Warranty. The registration will enable us to contact you in the unlikely event of a product safety notification. By returning this card you acknowledge you have read and understood the instructions for use and warnings set forth in the accompanying instructions.

Model : GS-30

DATE OF PURCHASE

STORE NAME

OWNER'S NAME

ADDRESS

CITY

STATE

ZIP CODE

Free Manuals Download Website

<http://myh66.com>

<http://usermanuals.us>

<http://www.somanuals.com>

<http://www.4manuals.cc>

<http://www.manual-lib.com>

<http://www.404manual.com>

<http://www.luxmanual.com>

<http://aubethermostatmanual.com>

Golf course search by state

<http://golfingnear.com>

Email search by domain

<http://emailbydomain.com>

Auto manuals search

<http://auto.somanuals.com>

TV manuals search

<http://tv.somanuals.com>