

# Haier

## **USER MANUAL**

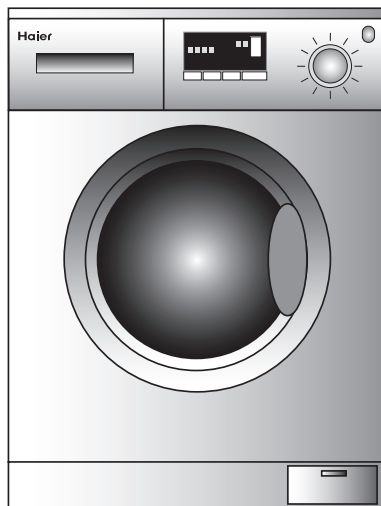
Automatic Drum  
Washing Machine

HWD-D1200TXVE

HWD-D1200TXVEME

HWD-D1000TXVE

HWD-D1000TXVEME



# Table of contents

*page no.*

## **Before use**

Parts .....	1
Safety instructions .....	2 - 4
Installation .....	5 - 6
Functions .....	7 - 8

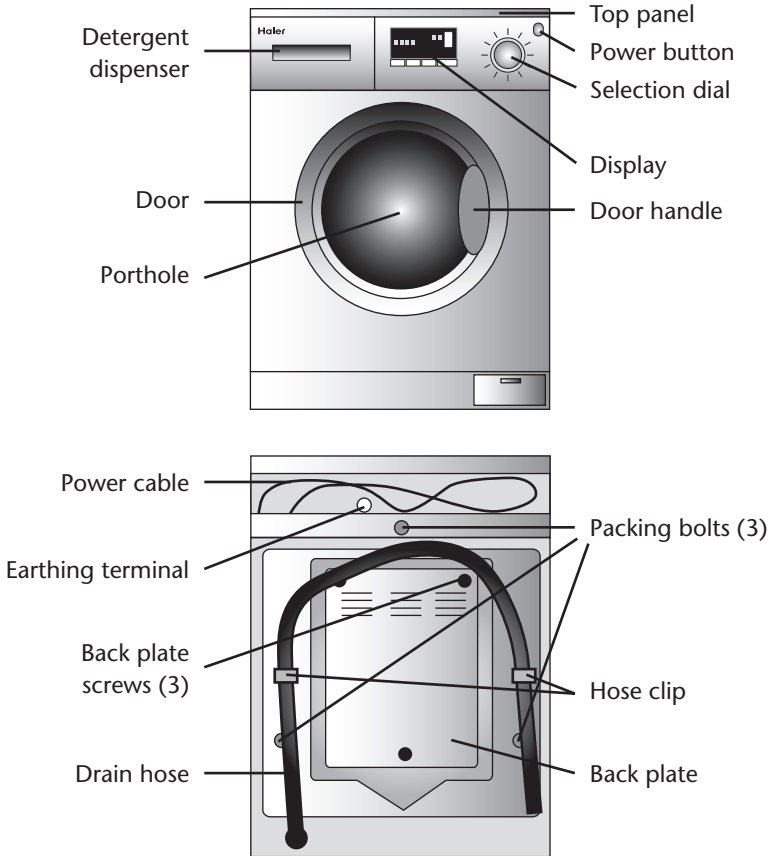
## **Using the appliance**

Programme selection .....	9
Preparation .....	10
Using your appliance .....	11 - 12
Other functions .....	13

## **Maintenance**

Maintenance .....	14 - 15
Trouble shooting .....	16
Technical specifications .....	17

# Parts



This diagram may vary slightly with the layout of the washing machine you have just purchased due to technical improvements.

## NOTICE

Please read these instructions carefully before using this appliance. The instructions contain important information which will help you get the best out of the appliance and ensure safe and proper installation, use and maintenance.

## KEEP THIS MANUAL

Keep this manual in a convenient location so you can refer to it to check safe and proper use of the appliance. If you sell or give the appliance to someone else, or leave it behind when you move house, make sure you also pass on this manual so that the new owner can become familiar with the appliance and safety warnings.

## Safety instructions

Using your appliance will be simple, but please make sure read the following to get the best out of it and to ensure your own safety.

### **BEFORE SWITCHING THE APPLIANCE ON FOR THE FIRST TIME:**

#### **DO**

- ✓ Ensure you connect the appliance directly to a domestic mains water supply.
- ✓ Ensure that the appliance is situated on a firm level base.
- ✓ Ensure that the electrical system meets the requirement laid out in the installation section of this document.
- ✓ Use a separate earthed socket for the power supply.
- ✓ Make sure that the plug is accessible.
- ✓ Make sure that the power cable is not caught under or in the appliance and avoid damage to the power cable.
- ✓ Check that hose joints and connections are firm and no water can leak. If joints are loose or there is leakage, turn off the tap and repair. Do not use the washing machine until the hoses are properly fixed.

#### **DO NOT**

- ✗ Connect the appliance to the power supply until installation is complete.
- ✗ Install the appliance outdoors or in a damp place. In the event of a water leak allow the machine to dry naturally.
- ✗ Expose the appliance to heat sources or direct sunlight to prevent plastic and rubber components from aging.
- ✗ Use an appliance with missing parts.

## DURING DAILY USE OF THE APPLIANCE

### **DO**

- ✓ Unplug the appliance before carrying out any maintenance or repair.
- ✓ Hold the plug and not the electric cable when unplugging the washing machine.
- ✓ Keep the door slightly open when not in use to prevent formation of odours.
- ✓ After each wash programme, turn off the machine and switch it off at the mains to save electricity and for safety. Wipe clean the lower part of the porthole.
- ✓ Pull up zips and fix loose threads to prevent the items from being entangled. If necessary, put small items into a net bag or pillow.

### **DO NOT**

- ✗ Touch or use the appliance when barefoot or with wet or damp hands or feet.
- ✗ Use flammable detergent or dry cleaning agent.
- ✗ Open the detergent drawer during the wash cycle.
- ✗ Use any flammable sprays in close vicinity to the appliance
- ✗ Remove or insert the plug in the presence of flammable gas
- ✗ Place heavy objects or sources of heat or damp on the top of the appliance.
- ✗ Obstruct the ventilation openings at the base of the appliance.
- ✗ Attempt to repair the appliance yourself. Contact the manufacturer or their approved service agent.
- ✗ Allow children or the infirm to play with the appliance or packing materials, without adult supervision.
- ✗ Touch the porthole during the washing process – it gets hot!
- ✗ Force the door open. The door is fitted with a self-lock device and will not open until 2-3 minutes after the washing machine stops.
- ✗ Open the door if the water level is visibly over the porthole.
- ✗ Use the appliance if the power cable is damaged. It must be replaced by the manufacturer, its approved service agent or similarly qualified persons in order to avoid a hazard.
- ✗ Wash foam rubber or sponge-like materials on a hot wash.
- ✗ Cover the appliance.

# Safety instructions

## Electrical connection (UK ONLY)

For your safety please read the following information

**Warning: This appliance must be earthed.**

The appliance must be connected to a 220 volt 240 cycle AC supply by means of a three pin socket, suitably earthed and should be protected by a 13 amp fuse.

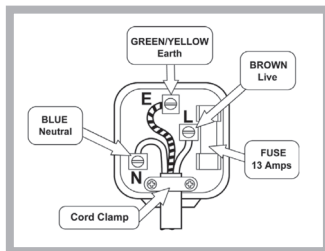
The appliance is supplied with a standard 3 pin mains plug fitted with a 13 amp fuse. Should the fuse require replacement, it must be replaced with a 13 amp fuse approved to BS1362.

The plug contains a removable fuse cover that must be refitted when the fuse is replaced. In the event of the fuse cover being lost or damaged, the plug must not be used until a replacement cover has been obtained.

When disposing of the appliance the plug should be cut off as close to the plug body as possible and the fuse should be removed to prevent an electrical hazard. Dispose of the plug safely.

The use of adapters, multiple connectors and/or extension cables is not recommended.

### How to wire a 13 amp plug.



### Important

The wires in the mains lead on this appliance are coloured in accordance with the following code:

Green and Yellow – Earth  
Blue - Neutral  
Brown - Live

As this may not correspond with your installation, proceed as follows:

The green and yellow wire must be connected to the terminal in the plug which is marked with the letter E or with the earth symbol ~ or coloured green and yellow,

The blue wire must be connected to the terminal marked N.

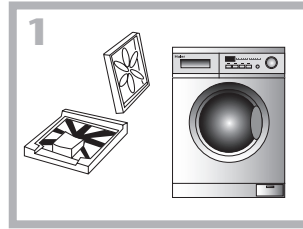
The brown wire must be connected to the terminal marked L.

# Installation

**Caution:** protective gloves should be worn

- Remove all the packing materials (including the foam base) to prevent vibration during use, as show in Fig. 1.

On opening, water drops may be visible on the appliance. This is a normal phenomenon.



- Check that the appliance is also supplied with the following:

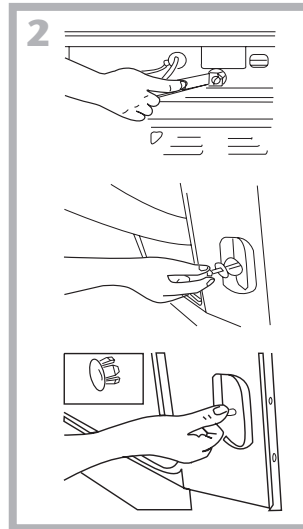
	User manual	Quality certificate	Water hose	Hose clip	Plastic plugs
Quantity	1	1	1	1	3

- Remove the packing bolts as shown in Fig. 2.  
The packing bolts are designed for support of internal components during transit.

Before use:

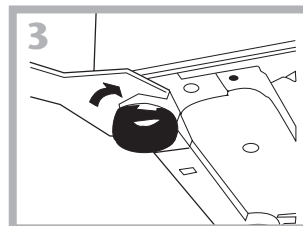
1. Remove the back plate.
2. Remove the three packing bolts on the back plate and take out the hose.
3. Replace the back plate.
4. Fill the holes left by the packing bolts with the plastic plugs provided.

*Attention:* The packing bolts and hose should be kept in a safe place for later use.



- Levelling the appliance

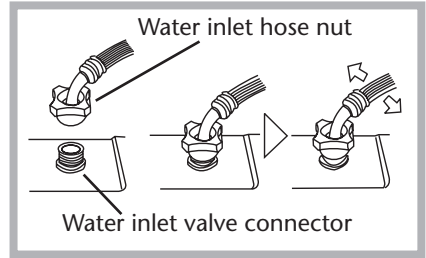
There are adjustable feet under the bottom of the appliance. Before use, the appliance should be adjusted, as show in Fig. 3, so that it is level. This will minimise vibrations and thus noise during use. It will also reduce wear and tear. We recommend using a spirit level to level the appliance.



# Installation

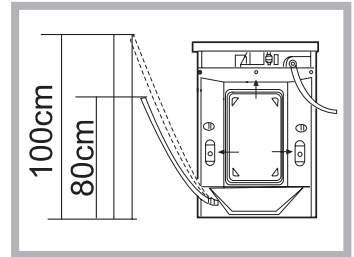
## Connecting the hose to the cold water supply

1. Connect the nut on the water inlet hose to the connector on the water valve. Ensure all seals are in place.
2. Tighten the nut to secure the hose.



## Drain hose

- The height of the drainage outlet must be between 80-100cm. To prevent the drain hose from dropping, attach it using the drain hose clip at the back of the washing machine.
- Use the hose clip to secure the end of the drain hose and to prevent the outflow of water. It is recommended that the length of the drain hose is not extended by way of a hose extension. In case of absolute need, we recommend that the extension has the same diameter as the existing hose and does not exceed 250cm in length.



*Note:* The drain hose should not be underwater and should be securely fixed and leak-free. When the drain hose is placed on the ground or the height of the pipe is less than 80cm, the washing machine will continuously drain while being filled (self-siphoning).

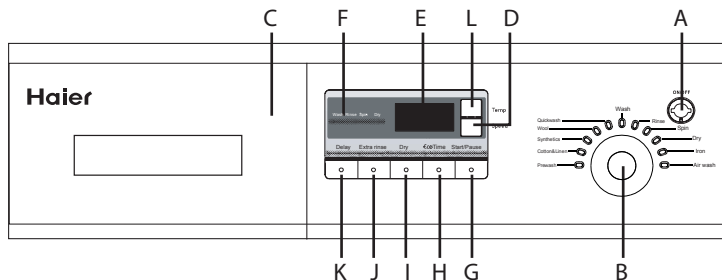
## Connection to the power supply

Before connecting to the power supply, make sure that:

- The socket is suitable or the maximum power of the washing machine (for safety, fuses in the power circuit should be rated for no less than 13A).
- The supply voltage should be within the values indicated on the specifications page.
- The power supply socket and the plug of the washing machine should be compatible. If they are not compatible, refer to a washing machine technician or Haier designated service engineer for power cable replacement.
- The washing machine should be earthed and in compliance with applicable law.
- Additional earthing cables should not be necessary if the socket and plug are earthed.
- If required, an additional earthing cable should be installed on the upper back of the washing machine and earthed.



# Control panel



- |                                  |                            |
|----------------------------------|----------------------------|
| A. Power button                  | G. Start/Pause button      |
| B. Programme selection dial      | H.  button                 |
| C. Detergent distribution drawer | I. Dry button              |
| D. Spin speed setting button     | J. Extra rinse button      |
| E. Display                       | K. Delay button            |
| F. Wash status indicator         | L. Wash temperature button |

## Functions

### A. Power button

Press this button to switch on the washing machine. Press it again to switch it off.

### B. Programme selection dial

Turn the dial clockwise or anti-clockwise to select the required programme. (Refer to Programme selection guide).

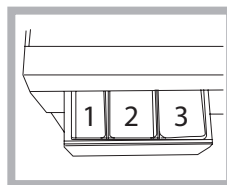
### C. Detergent distribution drawer

Programme descriptions are printed on the front of the detergent distributor, there are three detergent compartments numbered 1, 2, 3.

Box 1: Standard washing - extra-fast washing

Box 2: Softener

Box 3: Pre-washing detergent



### D. Spin speed setting button

Touch this button to select the desired speed. Refer to page 10 for guidance on spin speeds.

### E. Display

Information such as remaining wash time, temperature and speed setting and error messages are shown here.

### F. Wash status indicator

This light shows the stage of the cycle of the selected programme.

# Functions

## G. Start/Pause button

When the washing machine is connected to the power socket and a programme is selected, touch this button to start operation. Touch this button again during operation to pause the programme. The display screen will flash and the machine will be paused. Press the button again and the programme will continue.

## H. €cø button

Economy wash. This function automatically adjusts water consumption, wash time and heating time.

The wash load range is:

Prewash:	1 kg~6kg;
Cotton:	1 kg~6kg;
Synthetic:	1 kg~3kg;
Quick wash:	1 kg~3kg;
Wash:	1 kg~6kg;
Rinse:	1 kg~6kg;
Spin:	1 kg~6kg

## I. Dry button

Touch this button, the corresponding light will come on and the appliance will dry the laundry after the last spin cycle.

## J. Rinse hold button

Rinse hold helps reduce the creasing and odours that occur when you leave damp laundry in the appliance after the cycle has finished. The laundry stays in the water from the last rinse until you deselect the rinse hold button which will then start the spin programme to finish off the cycle.

## K. Delay button

Touch this button and the washing machine will start operation after the selected delay period. The corresponding indicator will go on. The delay range is 0.5-24 hours. Each touch of this button increases the delay by half an hour. After the delay is selected, press the Start/ Pause button to start countdown (the time is displayed on the screen until the programme ends). *Note:* The delay time must be longer than the programme time, otherwise the washing machine will start the wash programme immediately.

## L. Wash temperature button

Touch this button and the wash temperature will be displayed on the screen. Select a suitable temperature according to the type of laundry. The corresponding light will come on.

# Programme selection guide

Setting Laundry		Default Setting	Default Setting	Detergent		
				Comp 1	Comp 2	Comp 3
1	Prewash Heavy-soiling	* 30°C 40°C 50°C 60°C 90°C	1200rpm 40°C	★	O	★
2	Cotton & Linen Cotton fabric	* 30°C 40°C 50°C 60°C 90°C	1200rpm 40°C	★	O	X
3	Synthetics Synthetic fabrics	* 30°C 40°C 50°C 60°C	1200rpm 40°C	★	O	X
4	Wool Wool fabrics	* 30°C 40°C	*	★	O	X
5	Quick Wash Lightly-soiled cotton, linen and synthetic fabrics	* 30°C 40°C	1200rpm 40°C	★	O	X
6	Wash Cotton, linen and synthetic fabrics	* 30°C 40°C 50°C 60°C	40°C	★	O	X
7	Rinse Cotton, linen and synthetic fabrics	*	1200rpm 40°C	X	O	X
8	Spin Cotton, linen and synthetic fabrics	*	1200rpm *	X	X	X
9	Dry Cotton, linen and synthetic fabrics	The laundry is completely dry when the cycle is complete.				
10	Iron Cotton, linen and synthetic fabrics	The laundry is completely dry when the cycle is complete.				
11	Air wash Cotton, linen and synthetic fabrics	Air refresh wash for small items that need a quick refresh (e.g. school uniforms)				

NOTE: "O" indicates that softener can be added if need;

"★" indicates that detergent must be added;

"X" indicates that detergent must not added;

"\*" indicates cold water.

1) The wash temperature indicates the maximum temperature.

2) The wash temperature refers to the maximum temperature.

The wash cycle times are intended as a guide only. The actually used time may vary due to different water pressure, initial water temperature etc.

# Preparing for a cycle

## Detergent selection

Only special low foam detergent should be used in automatic drum washing machines. For blended or wool fabrics, special detergent should be used.

Dry cleaning solvent should not be used.

*Caution:* do not use too much detergent.

## Laundry treatment

- Sort out clothes according to type and extent of dirt. There are three types of clothes; cotton, synthetic and woollen (silk) fabrics.
- Separate white clothes from coloured clothes. If whites and coloureds are combined for one load, make sure the coloureds are colourfast.
  - Remove all objects from pockets that may cause damage to the machine, such as keys and coins.
  - Clothing with frayed edges or yarns should be put in a wash bag or equivalent before washing.
  - Repair damaged clothing, loose buttons or damaged zips and hooks before washing.
  - Bed sheets and tableware should be loosely loaded and not folded.
- This washing machine is for household use and designed for mechanically washable clothes. When washing, separate clothes according to their labels.

## Wash load

Type	Cotton	Synthetic	Delicate	Quick
Max load	6 kg	3 kg	2 kg	3 kg

## Spin speeds

Program	Default setting		Default setting	
	speed	Temperature	speed	Temperature
prewash	1000rpm	40°C	1200rpm	40°C
Cotton	1000rpm	40°C	1200rpm	40°C
Synthetic	800rpm	40°C	800rpm	40°C
Wool	800rpm	40°C	800rpm	40°C
Cashmere	400rpm	40°C	400rpm	40°C
Silk	400rpm	40°C	400rpm	40°C
Quick	1000rpm	40°C	1200rpm	40°C
Single Wash	/	/	/	/
Single Rinse	1000rpm	40°C	1200rpm	40°C
Single Spin	/	/	/	/
Single Drain	/	/	/	/

# Programme times

NO.	Program	Default time (minute)
1	Prewash	133
2	Cotton & Linen	116
3	Synthetic	72
4	Wool	60
5	QuickWash	12
6	Wash	61
7	Rinse	24
8	Spin	11
9	Dry	150
10	Iron	60
11	Air wash	30

## Using your appliance

### 1. Loading

Open the door, put in the laundry piece by piece and then tightly close the door.

*Notes:*

- 1) Before the first run of the appliance it is advisable to run the machine empty on a quick wash with no detergent to clean through the system.
- 2) Do not overload the washing machine.
  - Overalls (cotton approx. 950g)
  - Blended fabric clothes (approx. 800g)
  - Woollen blankets (approx. 3000g)
  - Socks (blended fabrics approx. 50g)
  - Jackets (cotton approx. 800g)
  - Single bed sheets (cotton approx. 800g)
  - T-shirt (approx. 300g)
  - Underwear (approx. 70g)
  - Jeans (approx. 800g)
  - Shirts (approx. 300g)
  - Pyjamas (approx. 200g)

### 2. Adding detergent

Slide out the detergent drawer and add the required detergent and softening agent into the correct places. Push back the drawer.

*Caution:*

- 1) Do not add liquid detergent to compartment 1 or 3.
- 2) On a prewash programme, detergent should be added to both compartments 1 and 3. For other programmes, do not add detergent to compartment 3.
- 3) Always refer to the clothing manufacturer's guidelines prior to washing.

## Using your appliance

### 3. Selecting washing programme

To get the best wash, an appropriate washing programme should be selected according to the type of laundry.

### 4. Washing temperature settings

Set the washing temperature as required, otherwise set at position \* when a cold wash is acceptable.

### 5. Function selection buttons

Select functions as required (refer to the "Functions" section). Otherwise keep all the buttons deselected.

### 6. Washing

Press the Start/Pause button and the washing machine will automatically commence the selected wash cycle.

### 7. Finish

The washing machine will stop operation automatically when a wash cycle ends and the "End" symbol will be displayed. Open the door and take out the laundry. Then switch the machine off at the mains to save electricity and for safety.

## Hints for saving energy

### During operation

1. Use a full wash load.
2. Do not overload the washing machine.
3. Prewash or soak heavily soiled clothes. Use a stain remover to remove the worst stains. These actions reduce the need to wash garments at a high temperature.
4. Reduce the amount of detergent or choose standard or delicate wash programmes for lightly soiled clothes.
5. Choose the correct washing temperature. Choose the lowest temperature setting appropriate for the load.
6. Do not use more detergent than required.

# Other functions

## 1. Control panel lock function:

To prevent children from accidentally changing the settings, the control panel can be locked by pressing the "Temperature" and "Delay" buttons at the same time. After the panel is locked, the sign "LOCK" and the remaining wash time will be displayed on the LED alternately. Now all the function keys except the power switch are locked. Press the key combination again to cancel this function.

## 2. Power-off memory function:

This machine has a power-off memory function. In the event of unintentional power failure or if the power has to be cut during a programme cycle, the present cycle will be saved and operation will resume when the power is switched on again.

## 3. Error display messages:

1:16 Remaining time 1 hour and 16 minutes.

0:01 Remaining time 1 minute.

60°C Wash temperature is 60°C.

--°C No heat (cold wash).

0 No Spin.

800 Spin speed 800r/min.

L--1 Manually selected code when laundry weight is less than 1kg.

L--A Manually selected code when drum is nearly full.

End Programme is finished.

Err1: Cause: Door is not shut properly.  
Solution: Shut the door properly.

Err2: Cause: Drainage error, water not emptied within 4 minutes.  
Solution: Clean the filter and check the drain hose for blockage. Take care on removing filter in case any water remains in the unit. If the error persists, please contact an approved service engineer.

Err3: Cause: Temperature sensor error.  
Solution: Contact an approved service engineer.

Err4: Cause: Heating element error or laundry overload that leads to a failure to reach the set temperature within the specified time (This message is displayed at the end of a programme).  
Solution: Reduce load and then start washing again or contact an approved service engineer.

Err5: Cause: Water level not met in 8 minutes.  
Solution: Make sure that tap is turned on and water pressure is normal. If problem still persists, please contact an approved service engineer.

Err6: Cause: dehumidification/ heating error.  
Solution: Please contact an approved service engineer.

Err7: Cause: Motor overheat error.  
Solution: Please contact an approved service engineer.

Err8: Cause: Water overflow  
Solution: Please contact an approved service engineer.

Err9: Cause: Dryer temperature sensor error.  
Solution: Please contact an approved service engineer.

Er10: Cause: Water level sensor error.  
Solution: Please contact an approved service engineer.

Er12: Cause: Dryer water level sensor error.  
Solution: Check whether clothes are dry or not and whether there is water still in the drum. If so allow excess humidity to escape from the appliance and try the drying cycle again. If the error persists please contact an approved service engineer.

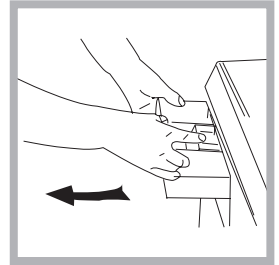
Er13: Cause: Dryer heater error.  
Solution: Please contact an approved service engineer.

Un6: Cause: Laundry is unevenly distributed.  
Solution: Redistribute laundry to balance the drum. If the problem persists, please contact an approved service engineer.

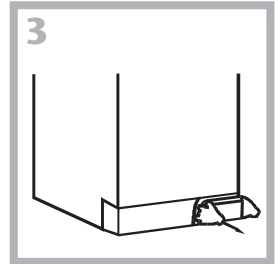
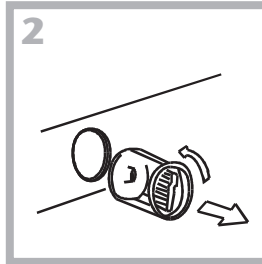
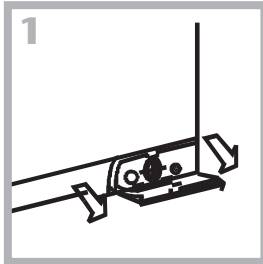
EUA: Cause: Communication error.  
Solution: Please contact an approved service engineer.

## Maintenance

1. Turn off the water tap and pull out electricity plug after each wash. Open the porthole to prevent formation of moisture and odours. If the washing machine is left idle for a long period, drain the water in the machine and replace the drain hose.
2. Unplug the machine during cleaning and maintenance. Use a soft cloth dampened with soap liquid to clean the machine case and rubber components. Do not use organic chemicals or corrosive solvents.
3. Clean the detergent distribution drawer regularly. Swing out the drawer, flush it clean with water and then replace it.



4. Clean the filter Cleaning methods (once a month)

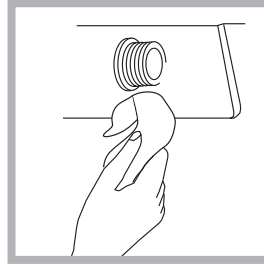


- 1) Push out the outer cover (Fig. 1);
- 2) Screw out filter by turning counter clockwise (Fig. 2);
- 3) Flush clean with running water;
- 4) Replace the filter by turning clockwise and remount the cover (Fig. 3);  
*Caution:* The filter must be in place, or it may lead to leakage.

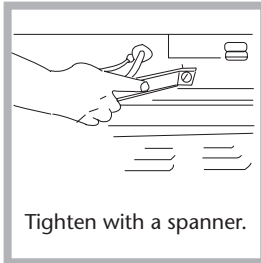
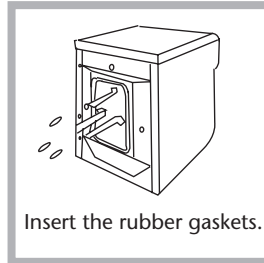
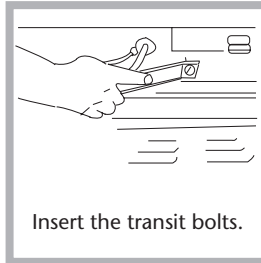
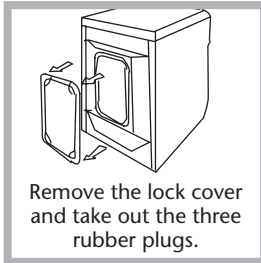


# Maintenance

5. To prevent blockage to the water supply by ingress of foreign substances, clean the water inlet and inlet filter regularly.



6. If the machine is to be moved to a distant place, replace the vibration absorbing locks (packing screws, rubber gaskets) removed before installation to prevent damage as shown below.



7. If the washing machine is left idle for a long period, pull out the electrical plug and turn off the water tap. Open the door to prevent formation of moisture and odours. Let the door open while not used.

# Trouble shooting

In the unlikely event of difficulties with your appliance please follow the trouble shooting guide below. If the problem persists, contact an approved service engineer. If an error code is displayed, please refer to the error code guide below.


Problem	Possible cause	How to correct the problem
The washing machine fails to operate	<ul style="list-style-type: none"> <li>• Incorrect connection to power supply</li> <li>• Power failure</li> <li>• Door is not properly closed</li> <li>• Machine has not been switched on</li> </ul>	<ul style="list-style-type: none"> <li>• Check power supply.</li> <li>• Check that door is properly closed.</li> <li>• Check that machine is on.</li> </ul>
Washing machine does not fill with water	<ul style="list-style-type: none"> <li>• Water tap is not turned on</li> <li>• Water pressure is too low</li> <li>• The inlet hose is kinked</li> <li>• Water supply failure</li> <li>• The programme selection dial is not properly set</li> <li>• The door is not properly closed</li> </ul>	<ul style="list-style-type: none"> <li>• Check water supply is to a domestic mains supply and that tap is fully open.</li> <li>• Check that hoses are not bent or crushed.</li> <li>• Turn dial to correct position.</li> <li>• Check that door is properly closed.</li> </ul>
The machine is continuously filling and draining	<ul style="list-style-type: none"> <li>• Drain hose is too low</li> </ul>	<ul style="list-style-type: none"> <li>• Check that the height of the drain hose is above 80cm</li> </ul>
Drainage failure	<ul style="list-style-type: none"> <li>• Drain hose is blocked</li> <li>• End of drain hose is over 100cm above the floor level</li> </ul>	<ul style="list-style-type: none"> <li>• Check drain hose</li> </ul>
Strong vibration during spin cycle	<ul style="list-style-type: none"> <li>• Some packing fixing bolts not removed</li> <li>• Washing machine on an uneven surface</li> <li>• Machine is overloaded</li> </ul>	<ul style="list-style-type: none"> <li>• Check packing bolts</li> <li>• Use a spirit level to ensure the appliance is level</li> <li>• Reduce amount of laundry in the appliance below the max level</li> </ul>
Operation stops before completion of the wash cycle	<ul style="list-style-type: none"> <li>• Water or electricity failure</li> <li>• Washing machine is in soaking cycle</li> </ul>	<ul style="list-style-type: none"> <li>• Check power and water supply</li> </ul>
Excessive foam in the drum	<ul style="list-style-type: none"> <li>• The detergent is not a low foam type</li> <li>• Excessive detergent has been used</li> </ul>	<ul style="list-style-type: none"> <li>• Check detergent type.</li> <li>• Use less detergent</li> </ul>
Operation stops for a period of time	<ul style="list-style-type: none"> <li>• Washing machine is in anti-crease soaking cycle</li> <li>• Washing machine gives an error message</li> </ul>	<ul style="list-style-type: none"> <li>• Wait until cycle is complete.</li> <li>• See error messages on previous pages.</li> </ul>

## Technical specification

Model / Item	HWD-D1000TXVE/ME	HWD-D1200TXVE/ME
Power Source	220-240 V/ 50Hz	220-240 V/ 50Hz
Working Current (Max) (A)	10	10
Tap Water Pressure (MPa)	$0.03 \leq P \leq 1$	$0.03 \leq P \leq 1$
Washing Power (W)	200	200
Spinning Power (W)	350	450
Max Load (kg)	6	6
Spinning Speed (Max) (r/min)	1000	1200
Washing Procedure	11	11
Water Heating Power (W)	1000	1000
Heating Power (W)	1000	1000
External Dimension (HxDxW) mm	850 x 590 x 595	850 x 590 x 595
Weight (kg)	82	82
Washing Noise	54.3	54.3
Spinning Noise	71.8	71.8

We apologise for any inconvenience caused by minor inconsistencies in these instructions, which may occur as a result of product improvement and development.



The symbol  on the product or on its packaging indicates that this product may not be treated as household waste. Instead it should be handed over to the applicable collection point for the recycling of electrical and electronic equipment. By ensuring this product is disposed of correctly, you will help prevent potential negative consequences for the environment and human health, which could otherwise be caused by inappropriate waste handling of this product. For more detailed information about recycling this product, please contact your local council office, your household waste disposal service or the shop where you purchased the product.

## Free Manuals Download Website

<http://myh66.com>

<http://usermanuals.us>

<http://www.somanuals.com>

<http://www.4manuals.cc>

<http://www.manual-lib.com>

<http://www.404manual.com>

<http://www.luxmanual.com>

<http://aubethermostatmanual.com>

Golf course search by state

<http://golfingnear.com>

Email search by domain

<http://emailbydomain.com>

Auto manuals search

<http://auto.somanuals.com>

TV manuals search

<http://tv.somanuals.com>