

CENTRAL PNEUMATIC®



1/2" AIR IMPACT WRENCH

Model 95310

Assembly and Operating Instructions

Due to continuing improvements, actual product may differ slightly from the product described herein.



**TO PREVENT SERIOUS INJURY,
READ AND UNDERSTAND ALL WARNINGS
AND INSTRUCTIONS BEFORE USE.**

3491 Mission Oaks Blvd., Camarillo, CA 93011

Copyright© 2006 by Harbor Freight Tools®. All rights reserved. No portion of this manual or any artwork contained herein may be reproduced in any shape or form without the express written consent of Harbor Freight Tools.

For technical questions and replacement parts, please call 1-800-444-3353.

Specifications

Maximum Torque: 250 ft. lbs.

Bolt Capacity: 5/8"

1/2" Square Drive

Reversible Drive

Air Requirements: 5 CFM @ 90 PSI

RPM: 7,000

1/4" NPT Air Inlet

3/8" Hose Size

Standard Anvil

Save This Manual

You will need the manual for the safety warnings and precautions, assembly instructions, operating and maintenance procedures, parts list and diagram. Keep your invoice with this manual. Write the invoice number on the inside of the front cover. Keep the manual and invoice in a safe and dry place for future reference.

Safety Warnings and Precautions

WARNING: When using tool, basic safety precautions should always be followed to reduce the risk of personal injury and damage to equipment.

Read all instructions before using this tool!

1. **Keep work area clean.** Cluttered areas invite injuries.
2. **Observe work area conditions.** Do not use machines or power tools in damp or wet locations. Don't expose to rain. Keep work area well lighted. Do not use electrically powered tools in the presence of flammable gases or liquids.
3. **Keep children away.** Children must never be allowed in the work area. Do not let them handle machines, tools, or extension cords.
4. **Store idle equipment.** When not in use, tools must be stored in a dry location to inhibit rust. Always lock up tools and keep out of reach of children.
5. **Do not force tool.** It will do the job better and more safely at the rate for which it was intended. Do not use inappropriate attachments in an attempt to exceed the tool capacity.

6. **Use the right tool for the job.** Do not attempt to force a small tool or attachment to do the work of a larger industrial tool. Do not use a tool for a purpose for which it was not intended.
7. **Dress properly.** Do not wear loose clothing or jewelry as they can be caught in moving parts. Protective, electrically non-conductive clothes and non-skid footwear are recommended when working. Wear restrictive hair covering to contain long hair.
8. **Use eye and ear protection.** Always wear ANSI approved impact safety goggles. Wear a full face shield if you are producing metal filings or wood chips. Wear an ANSI approved dust mask or respirator when working around metal, wood, and chemical dusts and mists.
9. **Do not overreach.** Keep proper footing and balance at all times. Do not reach over or across running machines.
10. **Maintain tools with care.** Keep tools sharp and clean for better and safer performance. Follow instructions for lubricating and changing accessories. Inspect air hose periodically and, if damaged, have them repaired by an authorized technician. The handles must be kept clean, dry, and free from oil and grease at all times.
11. **Disconnect air.** Unplug when not in use. Do not carry tools by the hose.
12. **Avoid unintentional starting.** Be sure the switch is in the Off position when not in use and before plugging in. Do not carry any tool with your finger on the trigger, whether it is plugged in or not.
13. **Stay alert.** Watch what you are doing, use common sense. Do not operate any tool when you are tired.
14. **Check for damaged parts.** Before using any tool, any part that appears damaged should be carefully checked to determine that it will operate properly and perform its intended function. Check for alignment and binding of moving parts; any broken parts or mounting fixtures; and any other condition that may affect proper operation. Any part that is damaged should be properly repaired or replaced by a qualified technician. Do not use the tool if any switch does not turn On and Off properly.
15. **Guard against electric shock.** Prevent body contact with grounded surfaces such as pipes, radiators, ranges and refrigerator enclosures.
16. **Replacement parts and accessories.** When servicing, use only identical replacement parts. Use of any other parts will void the warranty. Only use accessories intended for use with this tool. Approved accessories are available from Harbor Freight Tools.
17. **Do not operate tool if under the influence of alcohol or drugs.** Read warning labels on prescriptions to determine if your judgment or reflexes are impaired while taking drugs. If there is any doubt, do not operate the tool.

Unpacking

When unpacking, check the parts diagram and part number listing on page 6 to make sure all parts are included. If any parts are missing or damaged, please call Harbor Freight Tools at the telephone number on the cover of this manual as soon as possible.

Your Air Impact Wrench comes pre-assembled. To complete preparations for use, follow the steps shown on the following page. Part numbers shown below identify parts shown on the part number listing on page 6.

Air Connection

1. Remove the Screen from the Inlet (both included in part 42). You will need an air hose fitting (sold separately) before you can connect your Impact Wrench to an air compressor.
2. Attach the air hose fitting to the Inlet and tighten with a wrench.
3. Attach a quick-disconnect coupler (sold separately) to the air hose fitting if desired. This is a useful accessory as it allows quick-coupling action when using a variety of tools with the same air compressor.
4. The Impact Wrench is ready for use.

Operation

Frequent but not excessive, lubrication is required for best performance. Oil added through the airline connection will lubricate internal parts. An automatic airline oiler is recommended but oil may be added manually before every operation or after about 1 hour of continuous use. Only a few drops of oil at a time are necessary. Too much oil will collect inside the tool and be blown out during the exhaust cycle. **ONLY USE PNEUMATIC TOOL OIL.** Do not use detergent oil or additives as these lubricants will cause accelerated wear to the seals in the tool.

Dirt and water in the air supply are major causes of pneumatic tool wear. Use a filter/oiler for better performance and longer life. The filter must have adequate flow capacity for the specific application. Consult the manufacturer's instructions for proper maintenance of your filter.

The connector on the tool must not hold pressure when the air supply is disconnected. If the wrong fitting is used, the tool can remain charged with air after being disconnected.

Your Impact Wrench features an air Regulator (37), allowing you to vary the amount of torque exerted on the nut or bolt you are working on. Setting "1" is the lowest setting, and is recommended for smaller nuts and bolts. Setting "4" is the highest setting and provides the most torque and speed.

Loosening

1. Attach the correct size socket to the Anvil (8).
2. Set the compressor's pressure regulator to 90 PSI. Do not set the compressor's outlet regulator above 90 PSI.
3. Connect the Impact Wrench to the air compressor's hose. If leaking is detected, disconnect the air hose and repair before use.
4. Place the socket over the nut to loosen.
5. Grip the Impact Wrench firmly. Press the Reverse Valve (44) in from the area above the Trigger (29) so that the Reverse Valve protrudes out the back of the Housing. Press the Trigger to start the Impact Wrench.

Caution: **Make sure the nut or bolt can withstand the Impact Wrench's working torque.**

6. If the Impact Wrench cannot loosen the nut, **DO NOT** raise the outlet pressure of the air compressor.
7. If the Impact Wrench's Air Regulator is set on a low setting, you may raise the setting and try again. If the Impact Wrench's Air Regulator is already set on the "4" setting, do not continue attempts to loosen the nut with the Impact Wrench. Use other appropriate tools and methods to loosen the nut.
8. When the nut is removed, stop the Impact Wrench by releasing the Trigger and remove the Impact Wrench from the nut. Remove the nut from the socket if needed.

Tightening

The working torque of the Impact Wrench is 250 foot/lbs. Make sure the nut or bolt you are using the Impact Wrench to tighten can withstand the rated torque.

1. Tighten the nut on as far as you can by hand.
2. Place the socket on the nut. Press the Reverse Valve forward so it protrudes out the front of the Housing. Press the Trigger to start the Impact Wrench.
3. If the Impact Wrench stalls while tightening, **DO NOT** raise the outlet pressure of the air compressor above 90 PSI.
4. If the Impact Wrench's Air Regulator is set on a low setting, it may be raised before you try again. If the nut will not tighten at the maximum setting, do not continue attempts to tighten the nut. Use other appropriate tools and methods to tighten the nut.

5. When the nut has been tightened, remove the Impact Wrench and socket. Do not over-tighten.
6. If available, check the recommended torque specifications for the nut. You should use a torque wrench to torque the nut after using the Impact Wrench.

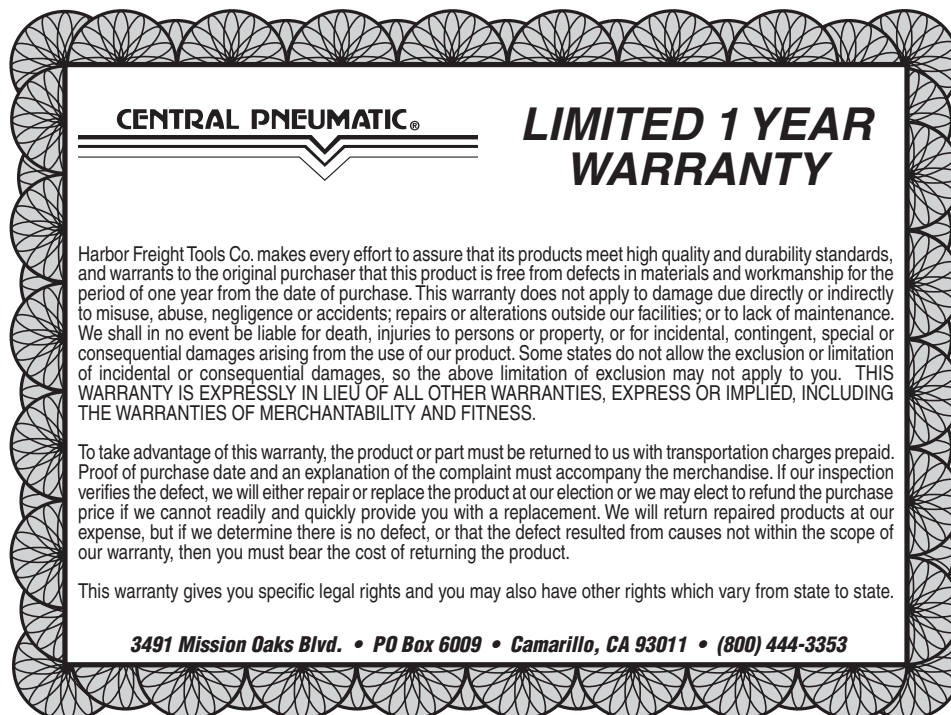
Maintenance

The Impact Wrench is best operated with an airline oiler. If you are using the Impact Wrench without an airline oiler, perform the following maintenance:

Disconnect the Impact Wrench from the air hose. Apply a few drops of pneumatic tool oil through the air line before each use, or every hour if used continuously. Apply a few drops of oil to the Trigger mechanism. Work the Trigger a few times to lubricate.

Note: Do not use detergent oil or additives as these lubricants will cause accelerated wear to the tool's seals.

WARRANTY



CENTRAL PNEUMATIC®

LIMITED 1 YEAR WARRANTY

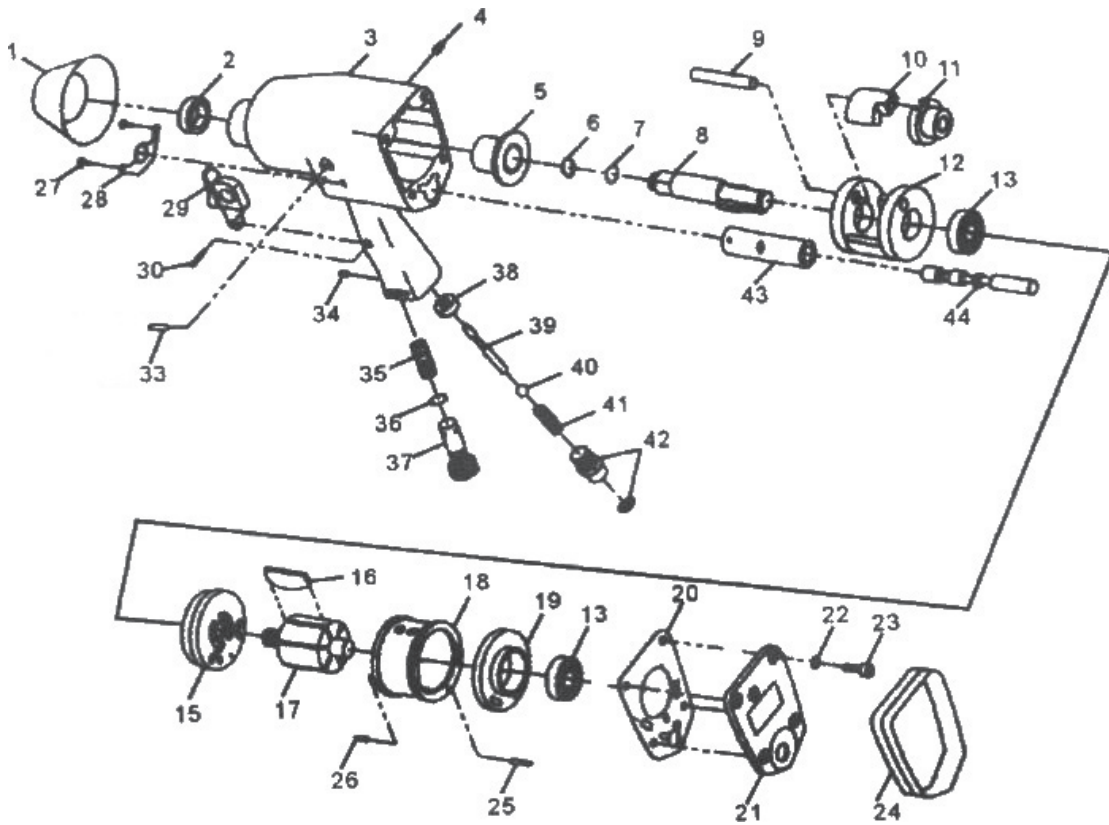
Harbor Freight Tools Co. makes every effort to assure that its products meet high quality and durability standards, and warrants to the original purchaser that this product is free from defects in materials and workmanship for the period of one year from the date of purchase. This warranty does not apply to damage due directly or indirectly to misuse, abuse, negligence or accidents; repairs or alterations outside our facilities; or to lack of maintenance. We shall in no event be liable for death, injuries to persons or property, or for incidental, contingent, special or consequential damages arising from the use of our product. Some states do not allow the exclusion or limitation of incidental or consequential damages, so the above limitation of exclusion may not apply to you. THIS WARRANTY IS EXPRESSLY IN LIEU OF ALL OTHER WARRANTIES, EXPRESS OR IMPLIED, INCLUDING THE WARRANTIES OF MERCHANTABILITY AND FITNESS.

To take advantage of this warranty, the product or part must be returned to us with transportation charges prepaid. Proof of purchase date and an explanation of the complaint must accompany the merchandise. If our inspection verifies the defect, we will either repair or replace the product at our election or we may elect to refund the purchase price if we cannot readily and quickly provide you with a replacement. We will return repaired products at our expense, but if we determine there is no defect, or that the defect resulted from causes not within the scope of our warranty, then you must bear the cost of returning the product.

This warranty gives you specific legal rights and you may also have other rights which vary from state to state.

3491 Mission Oaks Blvd. • PO Box 6009 • Camarillo, CA 93011 • (800) 444-3353

Parts Listing and Parts Diagram



Part	Description
1	PROTECTOR, RUBBER
2	OIL SEAL
3	HOUSING
4	SCREW
5	BUSHING
6	ANVIL COLLET
7	P7 O-RING
8	ANVIL
9	HAMMER PIN
10	HAMMER DOG
11	DRIVE CAM
12	HAMMER CAGE
13	6001 BEARING(2)
15	FRONT PLATE
16	ROTOR BLADE (6)
17	ROTOR
18	CYLINDER
19	END PLATE
20	GASKET
21	REAR COVER
22	M5 WASHER (4)
23	SCREW (4)
24	RUBBER COVER
25	PIN

Part	Description
26	PIN
27	SCREW (2)
28	MUFFLER COVER
29	TRIGGER
30	TRIGGER PIN

33	SCREW
34	SET SCREW
35	SPRING
36	P8 O-RING
37	REGULATOR
38	VALVE SEAT
39	THROTTLE VALVE PLUNGER
40	BALL
41	SPRING
42	INLET WITH SCREEN
43	VALVE SLEEVE
44	REVERSE VALVE

Free Manuals Download Website

<http://myh66.com>

<http://usermanuals.us>

<http://www.somanuals.com>

<http://www.4manuals.cc>

<http://www.manual-lib.com>

<http://www.404manual.com>

<http://www.luxmanual.com>

<http://aubethermostatmanual.com>

Golf course search by state

<http://golfingnear.com>

Email search by domain

<http://emailbydomain.com>

Auto manuals search

<http://auto.somanuals.com>

TV manuals search

<http://tv.somanuals.com>