



# HAND OPERATED WATER PUMP

**Model 01318**

## SET UP AND OPERATING INSTRUCTIONS



Visit our website at: <http://www.harborfreight.com>



**Read this material before using this product.  
Failure to do so can result in serious injury.  
SAVE THIS MANUAL.**

Copyright© 1999 by Harbor Freight Tools®. All rights reserved. No portion of this manual or any artwork contained herein may be reproduced in any shape or form without the express written consent of Harbor Freight Tools. Diagrams within this manual may not be drawn proportionally. Due to continuing improvements, actual product may differ slightly from the product described herein. Tools required for assembly and service may not be included.

**For technical questions or replacement parts, please call 1-800-444-3353.**

Manual Revised 10k

---

## SPECIFICATIONS

---

Handle	7"
Inlet Pipe Diameter	1-1/4" NPT
Maximum Lift	25 Feet
Maximum Volume	12 oz. Per Stroke
Assembled Dim.	17" H x 8" W
Spout to Handle	12-1/2"
Construction	Cast Iron Body, Base, and Handle Aluminum Internal Parts

**This product can be set up to pump water but never use this product to pump drinking (potable) water.**

---

## WARNING!

---

1. Wear ANSI-approved safety goggles during assembly.
2. Use for pumping water only.
3. **WARNING:** This product contains or, when used, produces a chemical known to the State of California to cause cancer and birth defects or other reproductive harm. (California Health & Safety Code § 25249.5, *et seq.*)

---

## ASSEMBLY

---

1. Place the **Base (13)** on a flat, smooth surface.
2. Set the **Valve Assembly (12)** in the circle groove of the **Base (13)**. It will only fit with the metal plate up.
3. Put the **Cylinder (9)** on the **Valve Assembly (12)**. Line up the **Cylinder (9)** so that the bolt holders on each side of sit over the two drilled openings on the **Base (13)**. The spout on the **Cylinder (9)** should rest over the flat side of the **Base (13)**.
4. Slip a **Bolt (10)** and a **Washer (11)** into the bolt holder on the **Cylinder (9)**. Put a **Nut (14)** under the **Base (13)** and screw it onto the **Bolt (10)**. Hand tighten. Repeat the procedure on the other side. Then, wrench tighten both **Bolts (10)**.
5. Set the **Piston Assembly (8)** with the screw eyelet up, down into the **Cylinder (9)**.
6. Put the **Cover (5)** onto the **Cylinder (9)** so the screw eyelet on the **Piston Assembly (8)** fits through the opening in the center of the **Cover**

(5). The large bolt hole on the **Cover (5)** should sit opposite the spout on the **Cylinder (9)**. The two recessed **Screw Bolts (4)** should straddle each side of the spout on the **Cylinder (9)**. Tighten the recessed **Screw Bolts (4)** with a small flat screwdriver. With a crescent wrench, tighten the large **Bolt (6)** on the **Cover (5)** opposite the spout.

7. Attach the **Handle (2)** to the **Piston Assembly (8)** using a **Bolt (3)** and **Nut (1)**. Make sure the hole on the **Handle (2)** that attaches to the **Cover (5)** rests between the bolt housing on the **Cover (5)**. If necessary, rotate the screw eyelet on the **Piston Assembly (8)** to find the best fit. Tighten the **Nut (1)**. Next, run the **Bolt (7)** through the bolt housing on the **Cover (5)** and the **Handle (2)** and tighten the **Nut (1)**.
8. Attach 1-1/4" NPT threaded water source pipe to the threaded inlet on the bottom of the pump.
9. Secure the pump by screwing the base to a stable surface.

---

## OPERATION

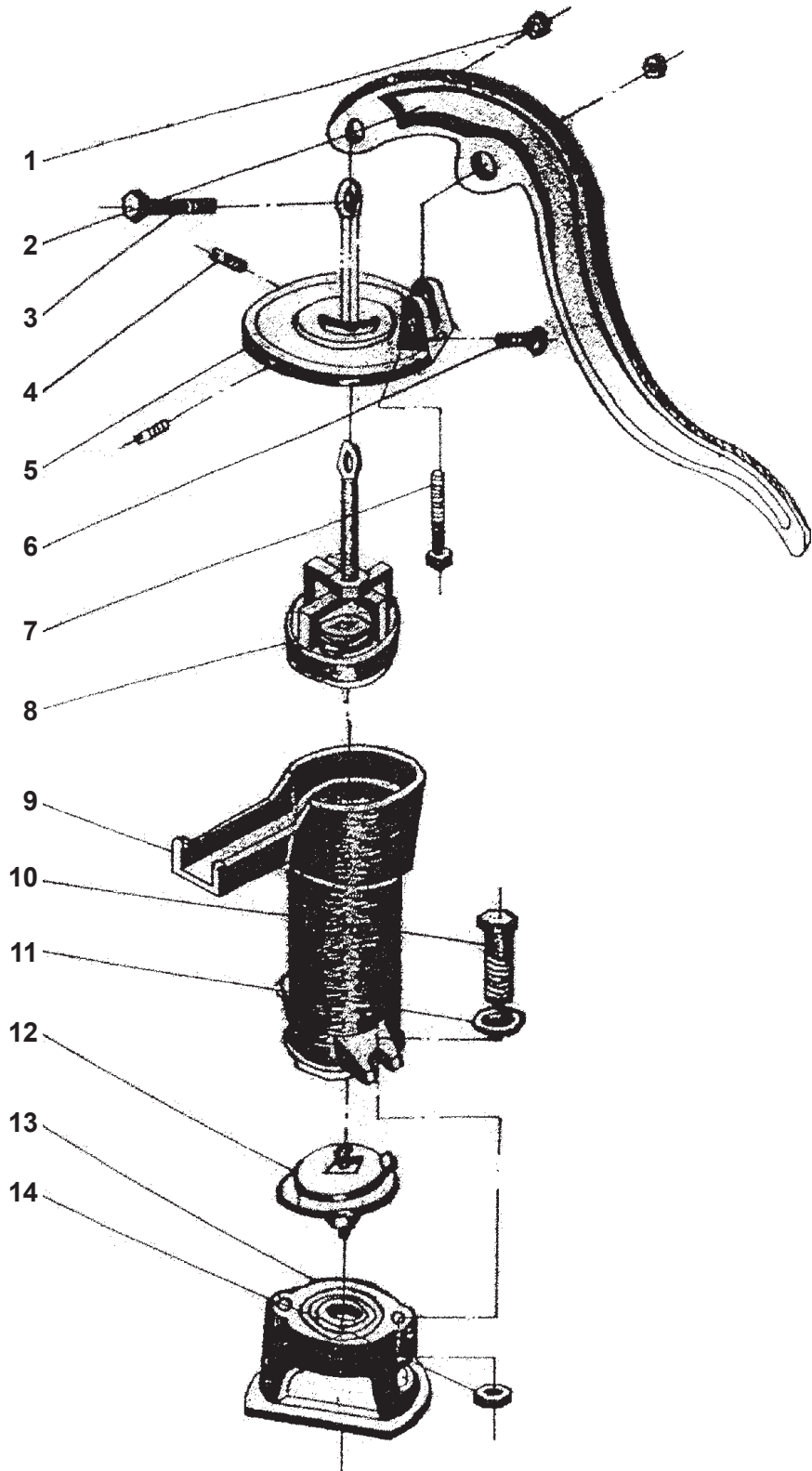
---

1. This pump needs to be primed before every use. Keep a pitcher (not included) of water near the pump for this purpose. Pump the handle up and down while pouring about a quart of water into the top of the pump to prime it and start the water flow.  
**Note: DO NOT STOP PUMPING THE HANDLE UNTIL FINISHED!** Stopping, even momentarily, will cause the pump to lose its prime and no longer work until primed again.
2. Refill the pitcher. Then, continue pumping as needed.

**Note: Do not pump drinking water from this pump.**

## PARTS LIST AND DIAGRAM

Part	Description	Qty
1	Nut M8	2
2	Handle	1
3	Bolt M8 x 30	1
4	Bolt M6 x 10	2
5	Cover	1
6	Bolt M8 x 40	1
7	Bolt M8 x 40	1
8	Piston Assembly	1
9	Cylinder	1
10	Bolt M10 x 40	2
11	Washer M10	2
12	Valve Assembly	1
13	Base	1
14	Nut M10	2



## **PLEASE READ THE FOLLOWING CAREFULLY**

THE MANUFACTURER AND/OR DISTRIBUTOR HAS PROVIDED THE PARTS LIST AND ASSEMBLY DIAGRAM IN THIS MANUAL AS A REFERENCE TOOL ONLY. NEITHER THE MANUFACTURER OR DISTRIBUTOR MAKES ANY REPRESENTATION OR WARRANTY OF ANY KIND TO THE BUYER THAT HE OR SHE IS QUALIFIED TO MAKE ANY REPAIRS TO THE PRODUCT, OR THAT HE OR SHE IS QUALIFIED TO REPLACE ANY PARTS OF THE PRODUCT. IN FACT, THE MANUFACTURER AND/OR DISTRIBUTOR EXPRESSLY STATES THAT ALL REPAIRS AND PARTS REPLACEMENTS SHOULD BE UNDERTAKEN BY CERTIFIED AND LICENSED TECHNICIANS, AND NOT BY THE BUYER. THE BUYER ASSUMES ALL RISK AND LIABILITY ARISING OUT OF HIS OR HER REPAIRS TO THE ORIGINAL PRODUCT OR REPLACEMENT PARTS THERETO, OR ARISING OUT OF HIS OR HER INSTALLATION OF REPLACEMENT PARTS THERETO.

## Free Manuals Download Website

<http://myh66.com>

<http://usermanuals.us>

<http://www.somanuals.com>

<http://www.4manuals.cc>

<http://www.manual-lib.com>

<http://www.404manual.com>

<http://www.luxmanual.com>

<http://aubethermostatmanual.com>

Golf course search by state

<http://golfingnear.com>

Email search by domain

<http://emailbydomain.com>

Auto manuals search

<http://auto.somanuals.com>

TV manuals search

<http://tv.somanuals.com>