



guide + play™

GPS-300WE

Quick-Start Guide

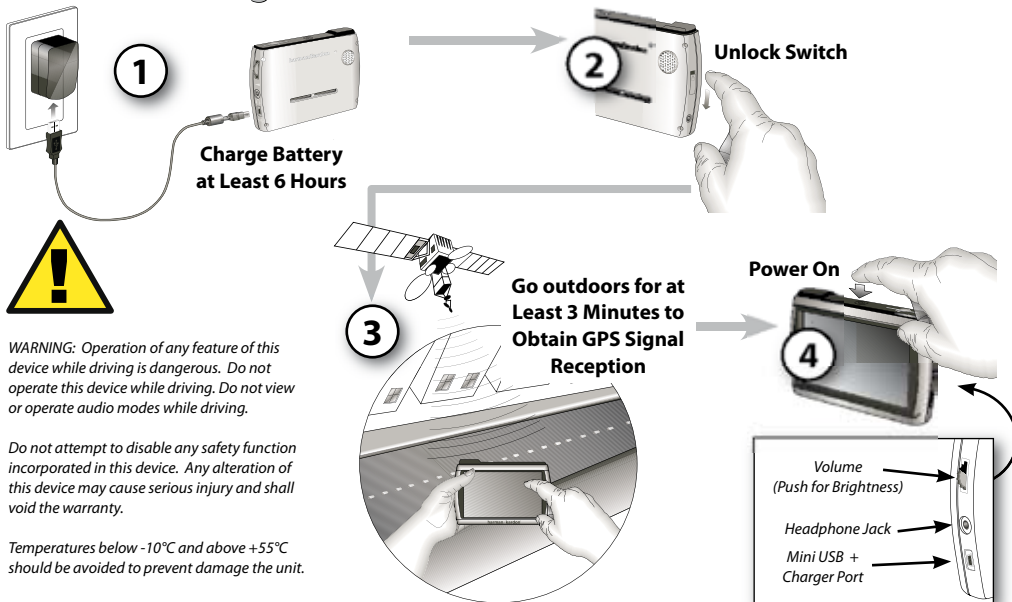
What's in the Box

GPS-300
Car Charger
Wall Charger
USB Cable
Fold-Flat Mounting Bracket
Plastic Disc for Dash-Mount

Alcohol Cleaning Pad
Quick-Start Guide
Carrying Case
TMC Antenna



Before You Begin



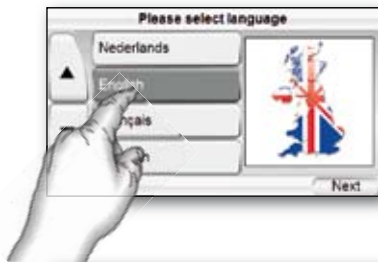
WARNING: Operation of any feature of this device while driving is dangerous. Do not operate this device while driving. Do not view or operate audio modes while driving.

Do not attempt to disable any safety function incorporated in this device. Any alteration of this device may cause serious injury and shall void the warranty.

Temperatures below -10°C and above $+55^{\circ}\text{C}$ should be avoided to prevent damage the unit.

Setup Wizard

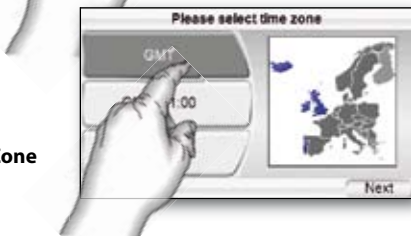
1
Select Language



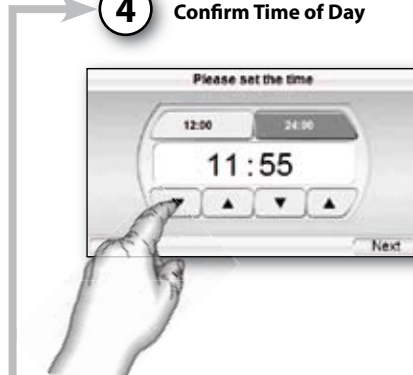
2
Select Units



3
Select Time Zone



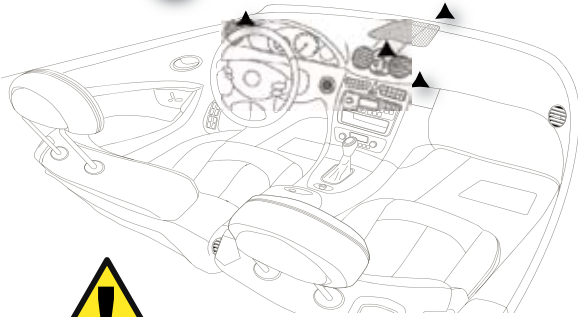
4 Confirm Time of Day



The geographic information provided by this device serves as a navigational aid only and does not include information pertaining to construction, road closures, speed restrictions, road or traffic conditions, or other circumstances relevant to public safety. The driver must always be aware of the actual road conditions and surroundings, and decide whether or not to follow the information provided by this device. Obey all traffic laws and observe safe driving practices. The manufacturer does not accept responsibility for any inaccurate or incomplete information provided by this device.

In-Vehicle Installation

1 Select Mounting Location



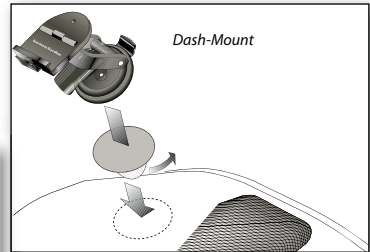
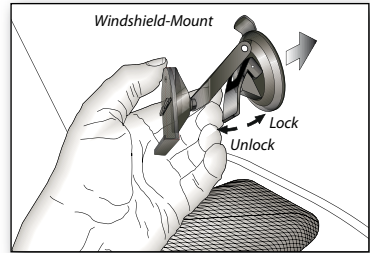
Do not install this device in any manner that impairs the safe operation of the vehicle. Do not install this device on any airbag panels or in the deployment field of any airbags. Do not place the device on the vehicle's dashboard unsecured. Failure to observe the installation or usage instructions may result in traffic accidents or personal injury.

The installation of this device on the windshield, between the driver and the windshield, or otherwise in any manner that obstructs the driver's clear view of the road or traffic conditions is dangerous and may be prohibited by law. In this case other mounting methods should be used. Check your local laws before mounting.

Some vehicles have a heat reflective shield embedded in the windshield. This may prevent the unit from getting proper GPS reception. In this case please use an external GPS antenna and connect it to the antenna plug on the back side of the unit.

2

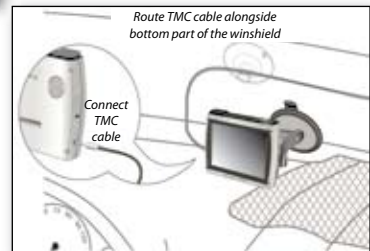
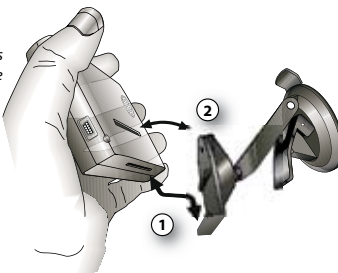
Install Mounting Base



Clean dash with supplied alcohol pad.

3

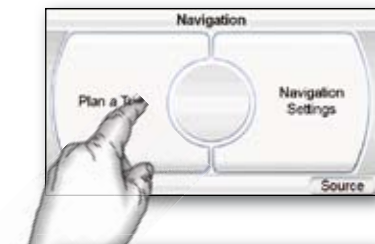
Install GPS-300 in Mounting Base



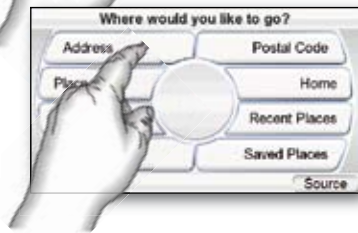
Installation of TMC antenna cable to receive traffic information

Plan Your First Trip

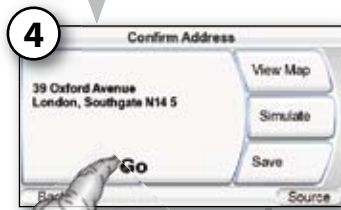
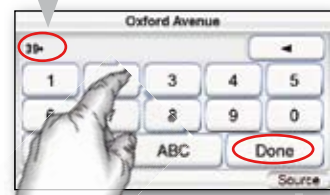
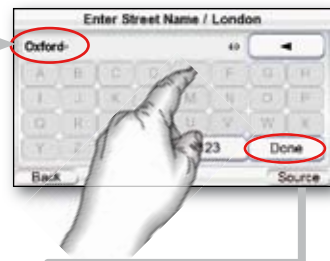
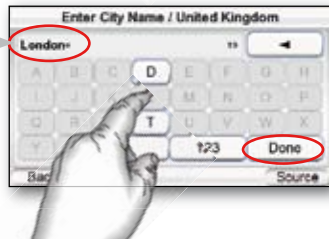
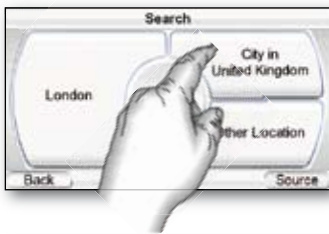
1
Choose
"Plan a Trip"



2
Choose
"Address"



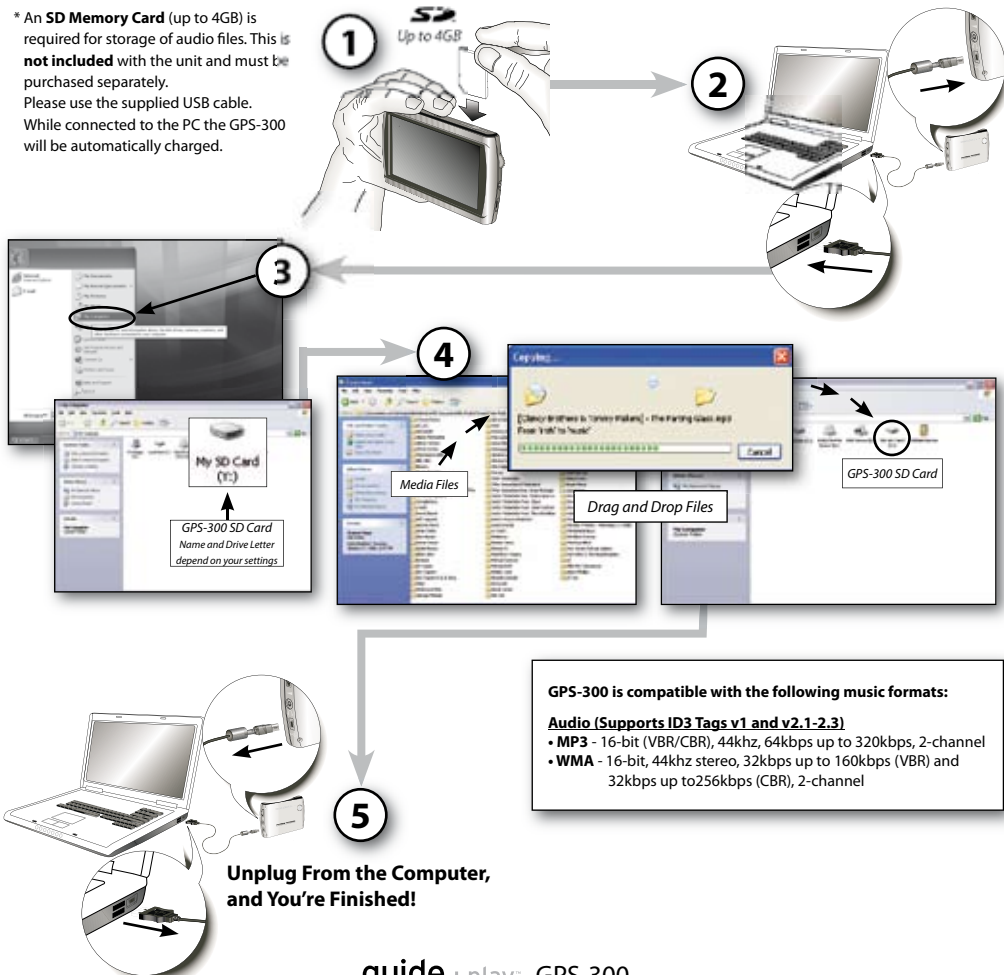
3
Enter
Destination



Choose "Go"
5
Follow the
On-Screen Prompts

Loading Media Files*

* An **SD Memory Card** (up to 4GB) is required for storage of audio files. This is **not included** with the unit and must be purchased separately. Please use the supplied USB cable. While connected to the PC the GPS-300 will be automatically charged.



Syncing Media Files

Requirements

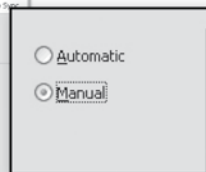
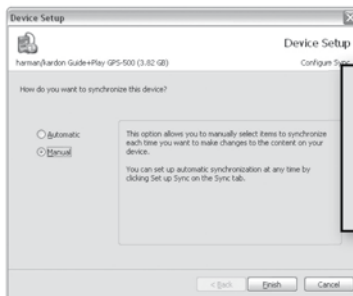
- PC running Windows XP service pack 2 or higher.
- Windows Media Player 10 or higher installed on PC.
- Software decoder to play media files with Windows Media Player.
- SD card (FAT32 format) with sufficient free space to hold media files to sync.

Prepare GPS-300 for Sync

- Insert the SD card into the GPS-300's SD card slot.
- Disconnect the USB cable from the GPS-300.
- Enter "Settings" menu, go to "USB" and select "MTP".
- Use supplied USB cable to connect the GPS-300 to a PC USB hub.

Prepare PC for Sync

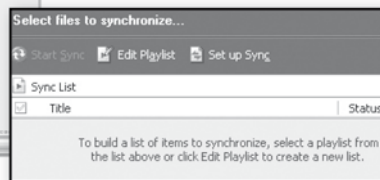
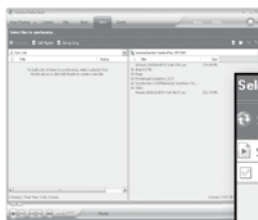
When plugging the cable in for the first time, you will see the following screen or similar:



Select "Manual" to manually select media files to sync to device.

Find Files on PC

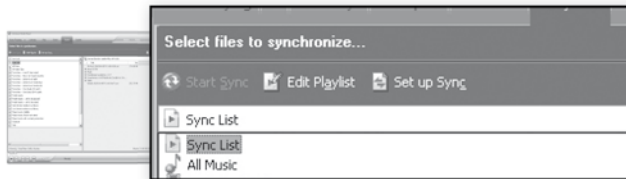
In the Windows Media Player go to "Sync" to define a "Sync List".



Syncing Media Files

4

Select Files

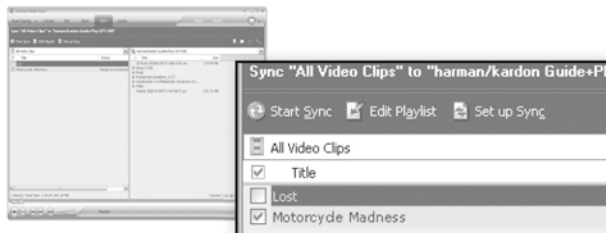


Select the files you wish to sync from the sync list. If necessary, Windows Media Player will automatically transcode audio files to the format supported by the GPS-300. In order to do this, the decoder required for the media format must be installed on the PC – this can be tested by playing the media file using Windows Media Player. If it plays, the decoder is installed. If it does not play, the decoder must be installed first.

5

Sync Files

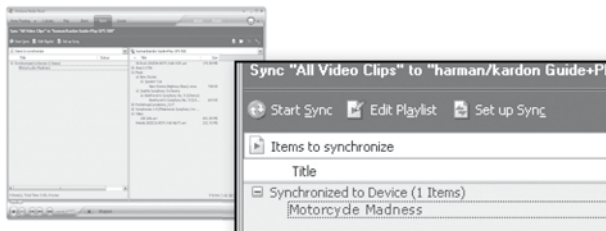
Once you've selected files to sync, press the "Start Sync" button. Wait for the sync operation to finish.



6

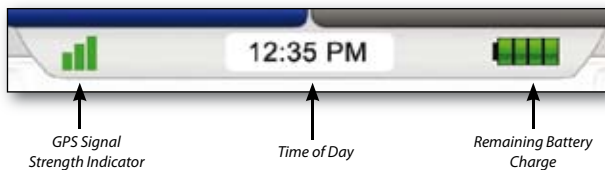
Finished

Once the sync is finished, the media file is on the SD card. Unplug the USB connection to play the media files on the GPS-300 from the "Music" menu.



Main Menu

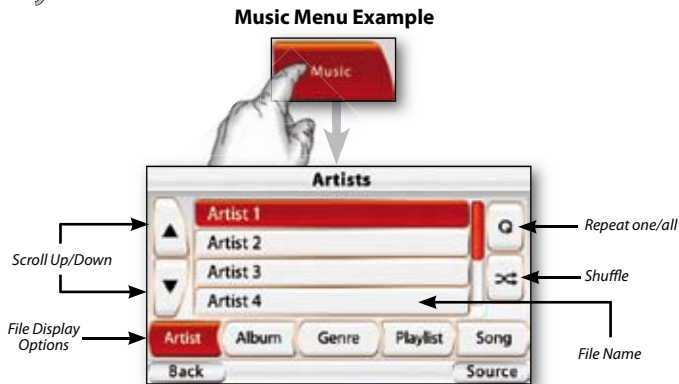
The colour coded menu screen gives you direct access to the main functionalities of the GPS-300. You can easily get back to the main menu by pushing the "Source" button on the bottom right corner of every screen.



Using the Audio Player

Choosing "Music" from the source menu brings up the "Artists" screen.

You can navigate music by Artist, Album, Genre, Playlist or Song, using the appropriate button. Please note that correct ID3 tag information is required for other than Song based browsing.



Listening to Audio (Car)

A separate audio cable is not included with the unit and has to be purchased separately if required. Please consult the manual of your vehicle's audio system to find out the correct cable type.

1

**Connect to Audio System
or
Use Built-In Speaker**

2

**Plug In for Charging
When Needed**



Listening to Audio (out of the car)

1

**Connect Headphones
or Ear Buds**

2

**Or Use the Built-In
Speaker**



The installation and use suggestions provided by the manufacturer may be subject to restrictions or limitations by federal, state or local laws. The user should determine whether the installation and use of this device is governed by any law prior to installation or use.

For more information, please consult the user's manual online at <http://www.harmanardon.com>

Troubleshooting

SYMPTOM	SOLUTION
Unit does not turn on at all	Charge battery, check UNLOCK switch
Unit does not have a good GPS signal	Make sure the unit has a clear and unobstructed view of the sky. If your vehicle has a heat reflective shield you might have to use an external GPS antenna.
Unit does not have any songs to play	Requires loading to SD card.
Computer sees unit as "MTP Device"	Change "USB" preferences in "Settings" menu.
Screen is too bright or too dim	Adjust in "Settings" menu or press rotary wheel on the right side.
Volume is too low for navigation prompts	Adjust volume using rotary wheel on the right side.
Suction cup mount is loose	Reposition with moderate force.
Screen is loose on mount	Make sure it is securely "clicked" into place on both the bottom and back.
Unit is unresponsive, won't power off	Using a paper clip, press the reset button on the right side of the bottom panel.
No audio playback	Be sure that the media file type is supported by the unit.
No TMC reception	Check if TMC antenna cable is correctly plugged-in.

For customer support and access to the complete

GPS-300 User's Manual please go to

<http://www.harmankardon.com>



Temperatures:

Standard operation: -10° C (+14° F) to +55° C (+131° F).

Short period storage: -20° C (-4° F) to +60° C (+140° F).

Long period storage: 0° C (+32° F) to +25° C (+77° F).

guide play GPS-300

Download from www.Softmanuals.com. All Manuals Search And Download.

harman/kardon®
guide + play™

250 Crossways Park Drive, Woodbury, New York 11797 www.harmankardon.com
2, route de Tours, 72500 Château du Loir, FRANCE
©2007 Harman International Industries, Incorporated. All rights reserved
Part No. 950-0209-001

H A Harman International® Company



Please Recycle



Declaration of Conformity



We, Harman Consumer Group, Inc.
2, route de Tours
72500 Château du Loir
FRANCE

declare in own responsibility that the product described
in this manual is in compliance with technical standards:

EN 60950-1:2001+A11

EN 55022:1998+A1:2000+A2:2003

EN 55024:1998+A1:2001+A2:2003

EN 61000-3-2:2000

EN 61000-3-3:1995+A1:2001

A handwritten signature in black ink, appearing to read 'Klaus Lebherz'.

Klaus Lebherz
Harman Consumer Group, Inc.
Chateau du Loir, France. 06/07

Free Manuals Download Website

<http://myh66.com>

<http://usermanuals.us>

<http://www.somanuals.com>

<http://www.4manuals.cc>

<http://www.manual-lib.com>

<http://www.404manual.com>

<http://www.luxmanual.com>

<http://aubethermostatmanual.com>

Golf course search by state

<http://golfingnear.com>

Email search by domain

<http://emailbydomain.com>

Auto manuals search

<http://auto.somanuals.com>

TV manuals search

<http://tv.somanuals.com>