

---

# OWNER'S MANUAL SUPPLEMENT

---

## **ELECTRIC CHAIN HOIST ED SERIES ED1050**

1050 Lb. Capacity

Code, Lot and Serial Number

### **⚠ WARNING**

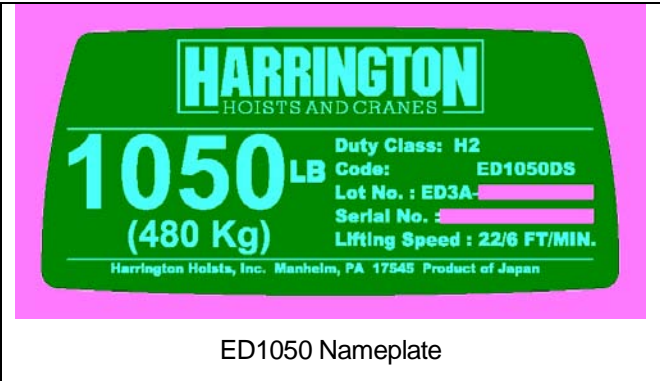
This equipment should not be installed, operated or maintained by any person who has not read and understood all the contents of this manual. Failure to read and comply with the contents of this manual can result in serious bodily injury or death, and/or property damage.

**HARRINGTON**  
HOISTS AND CRANES

## 9.0 Parts List

When ordering Parts, please provide the Hoist code number, lot number and serial number located on the Hoist nameplate (see fig. below).

Reminder: Per sections 1.1 and 3.9.4 to aid in ordering Parts and Product Support, record the Hoist code number, lot number and serial number in the space provided on the cover of this manual.



The parts list is arranged into the following sections:

| Section                          | Page |
|----------------------------------|------|
| 9.1 ED1050 Additional Parts..... | 14   |

A designator is used to distinguish parts that apply only to a particular model or option. Refer to Section 2 for hoist model numbers and additional descriptions. The designators are:

- S = Single Speed
- DS = Dual Speed

**This Page Intentionally Left Blank**

## 9.1 ED1050 ADDITIONAL PARTS

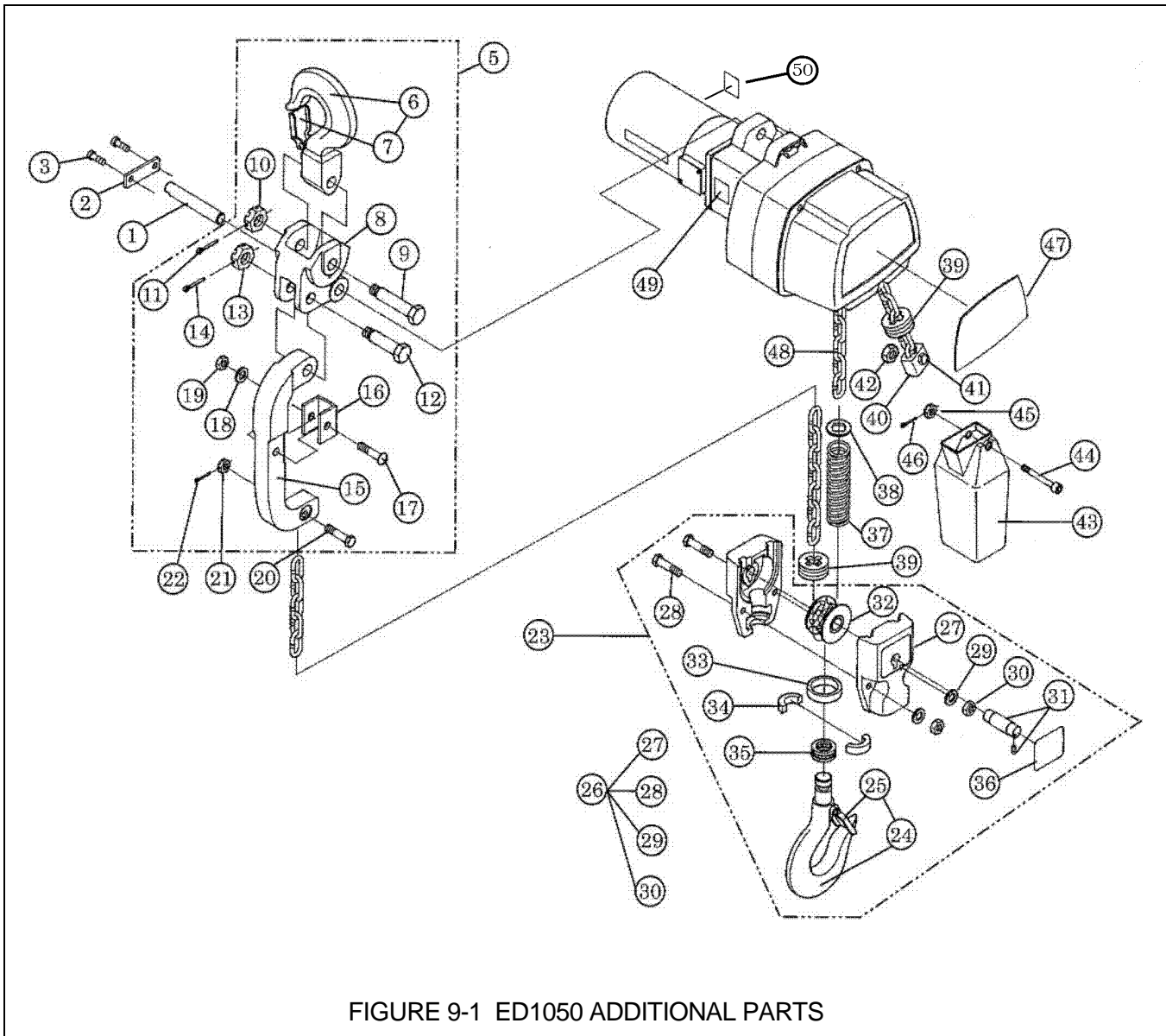


FIGURE 9-1 ED1050 ADDITIONAL PARTS

## 9.1 ED1050 ADDITIONAL PARTS

| Fig. No. | Part Number  | Part Name                    | Qty Per Hoist |
|----------|--------------|------------------------------|---------------|
| 5        | E3DBX48S1470 | Connection yoke complete set | 1             |
| 6        | E3DBX48S6460 | Top hook assembly            | 1             |
| 7        | CF071005     | Hook Latch assembly          | 1             |
| 8        | E3DBX48S9470 | Connection yoke              | 1             |
| 9        | ES006005L    | Top Pin, L                   | 1             |
| 10       | L3183008     | Slotted nut                  | 1             |
| 11       | 9009403      | Split pin                    | 1             |
| 15       | E3DBX48S9580 | Joint yoke                   | 1             |
| 16       | E3DBX48S9592 | Protection pad               | 1             |
| 17       | J1AG25003535 | Truss head machine screw     | 1             |
| 18       | 9012510      | Washer                       | 1             |
| 19       | 9098503      | U nut                        | 1             |
| 20       | E2D041125    | Chain pin                    | 1             |
| 21       | E2D049125    | Slotted nut                  | 1             |
| 22       | 9009402      | Split pin                    | 1             |
| 23       | E3DHX48S1480 | Bottom hook complete set     | 1             |
| 24       | E3DBX48S2480 | Bottom yoke assembly         | 1             |
| 25       | ER1BS9002    | Hook latch assembly          | 1             |
| 26       | E3DBX48S2485 | Bottom yoke assembly         | 1             |
| 27       | E3DBX48S9485 | Bottom yoke                  | 2             |
| 28       | 9093307      | Bolt                         | 2             |
| 29       | 9012709      | Spring lock washer           | 2             |
| 30       | 9093420      | Nut                          | 2             |
| 31       | E3DBX48S6489 | Bottom shaft assembly        | 1             |
| 32       | E3DBX48S6487 | Idle sheave assembly         | 1             |
| 33       | ES026003     | Thrust collar A              | 1             |
| 34       | ES027003     | Hook stopper                 | 2             |
| 35       | ES022003     | Thrust bearing               | 1             |
| 36       | E3DBX48S9597 | Name plate C                 | 1             |
| 37       | E3DBX48S9590 | Chain spring                 | 1             |
| 38       | E3DBX489591  | Washer                       | 1             |

## 9.1 ED1050 ADDITIONAL PARTS

| <b>Fig. No.</b> | <b>Part Number</b> | <b>Part Name</b>                   | <b>Qty Per Hoist</b> |   |
|-----------------|--------------------|------------------------------------|----------------------|---|
| 43              | E2D1835125         | Chain container                    | 1                    |   |
|                 | 44                 | E2D854125                          | Socket bolt BP       | 1 |
|                 | 45                 | E2D853125                          | U nut                | 1 |
|                 | 46                 | 9009402                            | Split pin            | 1 |
| 47              | E3DHX48S9801       | Name plate B, Single Speed         | 1                    |   |
|                 | E3DHX48R9801       | Name plate B, Dual Speed           | 1                    |   |
| 49              | E3DBX48S9599       | Warning Seal E (Finger protection) | 1                    |   |
| 50              | E3DHX48S9802       | Nameplate M (Motor Nameplate)      | 1                    |   |

**This Page Intentionally Left Blank**

**This Page Intentionally Left Blank**



**This Page Intentionally Left Blank**

## Free Manuals Download Website

<http://myh66.com>

<http://usermanuals.us>

<http://www.somanuals.com>

<http://www.4manuals.cc>

<http://www.manual-lib.com>

<http://www.404manual.com>

<http://www.luxmanual.com>

<http://aubethermostatmanual.com>

Golf course search by state

<http://golfingnear.com>

Email search by domain

<http://emailbydomain.com>

Auto manuals search

<http://auto.somanuals.com>

TV manuals search

<http://tv.somanuals.com>