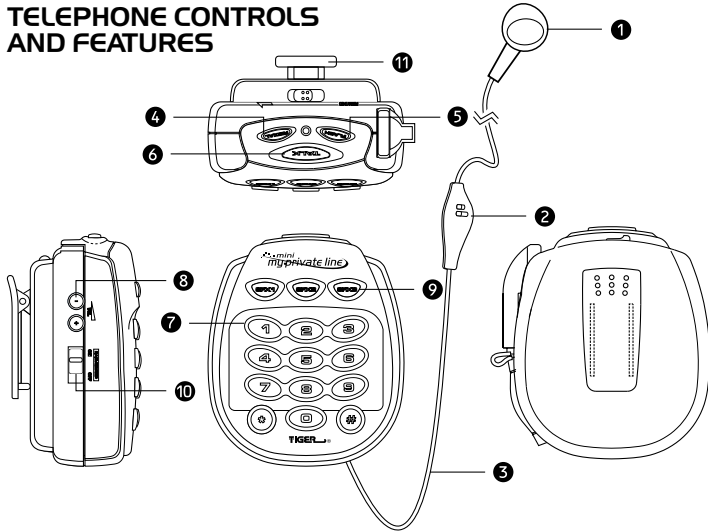


mini my.private line™

INSTRUCTIONS



TELEPHONE CONTROLS AND FEATURES

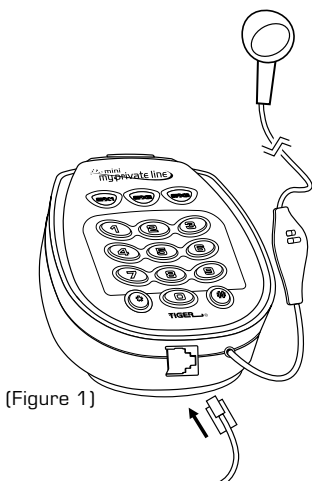


- 1 EAR PIECE/SPEAKER**
- 2 MICROPHONE**
- 3 HEADSET CORD**
- 4 REDIAL BUTTON**
- Redials the last number called
- 5 FLASH BUTTON**
- Lets you retrieve a dial tone after ending a call
- 6 TALK SWITCH**
- Turns the phone on and off
- 7 DIALING KEYS**
- 8 VOLUME CONTROL**
- Controls the reception volume
- 9 SOUND EFFECT BUTTONS**
- 10 EAVESDROPPER DETECTOR SWITCH**
- Turns the eavesdropper detector on and off. If someone picks up a phone on the same line, the eavesdropper detector will tell you "SOMEONE IS LISTENING". When it's safe to talk, My Private Line will announce "SAFE TO TALK!"
- 11 BELT CLIP**

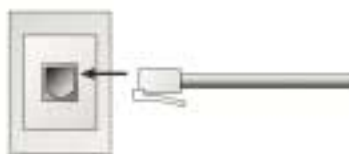
INSTALLATION

Line Cord Connection

With a modular telephone system, connect the 10 feet of straight telephone line cord included with the phone to the modular jack located on the bottom of the handset (Figure 1).

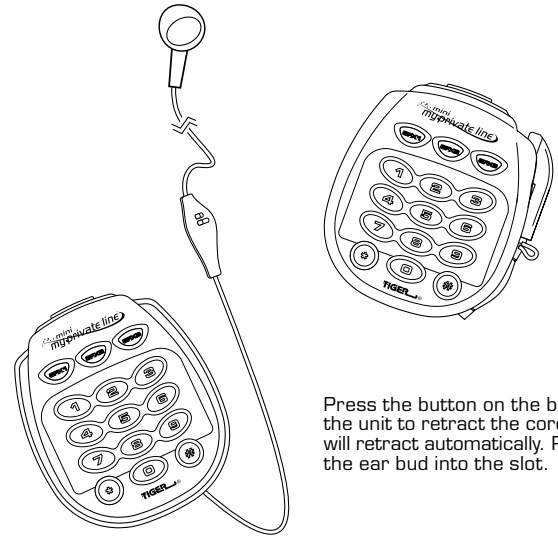


(Figure 1)



(Figure 2)

Insert the other end of the cord into a modular wall jack (Figure 2). Make sure all plugs snap firmly in place.



Press the button on the back of the unit to retract the cord. Cord will retract automatically. Replace the ear bud into the slot.

OPERATION

Receiving a Phone Call

When your phone rings, pull out the cable with the ear bud and place the ear bud comfortably in your ear and press the TALK switch. Make sure the microphone is positioned closer to your mouth. Clip the base unit to your belt.

Dialing a Call

Pull out the cable with the ear bud and place the ear bud comfortably in your ear. Press the TALK switch and wait for the dial tone. Press the dial buttons for the number you want.

To Hang up

Press the TALK switch again to hang up the line.

To Return the Cord to the Base Unit

Press the button on the back of the unit to retract the cord. Cord will retract automatically. Replace the ear bud into the slot.

Eavesdropper Detector

When the Eavesdropper Detector is turned on, a security alert is activated and you hear "SOMEONE IS LISTENING!" when an unwanted third party picks up an extension on the same line. When the unwanted party hangs up, the phone lets you know that it is "SAFE TO TALK!" The Eavesdropper Detector can be turned off so that other extensions on the same line can be used during a conversation.

Sound Effects

This phone includes three sound effects that you can choose to play during your telephone conversation. F/X 1= Door Bell, F/X 2= Scream, and F/X 3= Telephone Ring.

Redial

If the line is busy when you call someone, or you want to call back someone you just called, there is no need to dial the number again manually. When pressed, the REDIAL button automatically redials the most recently dialed number. Press the TALK switch to TALK. When you hear a dial tone press REDIAL instead of dialing the number.

Flash

The FLASH button is used to retrieve a new dial tone after ending a call without having to turn the phone on and off.

NOTE: The FLASH button is also a useful feature for special telephone services such as call waiting, if you subscribe to this service. Press FLASH briefly, release and perform the custom call procedure.

Volume Control

My Private Line transceiver features a dial control to regulate the volume of the reception. If you are having trouble hearing the person you are talking to, increase the volume until it is at a desirable level. If the reception is too loud, decrease the volume until it is at a desirable level.

TROUBLESHOOTING

No Dial Tone

- Check all modular plug connections to make sure they are securely connected.
- Problem with the wiring. Try another phone jack. If the phone works on another jack, you may have a problem with your wiring. Contact your local phone company.

Redial Function Does Not Operate

- Check if the last number you intended to call was really the last number you dialed.

Phone Does Not Ring

- Too many telephones may be installed on the same line. Contact your local telephone company to determine the maximum number of extensions for your calling area.

Sound Volume Is Too Low

check the VOLUME key to make sure it is turned down too low.

- Another extension may be off the hook. Hang up extension.

IMPORTANT SAFETY INSTRUCTIONS

When using your telephone equipment, basic safety precautions should always be followed to reduce the risk of fire, electric shock and injury to persons, including the following:

1. Read and understand all instructions.
2. Follow all warnings and instructions marked on the product.
3. Unplug this product from the wall outlet before cleaning. Do not use liquid cleaners or aerosol cleaners. Use a damp cloth for cleaning.
4. Do not use this product near water, for example, near a bathtub, bathroom sink, kitchen sink or laundry tub, in a wet basement, or near a swimming pool.
5. Do not place this product on an unstable cart, stand, or table. The product may fall causing serious damage to the product.
6. Slots and openings in the cabinet and the back or bottom are provided for ventilation, to protect from overheating. These openings must not be blocked or covered. The openings should never be blocked by placing the product on a bed, sofa, rug, or other similar surface. This product should never be placed near or over a radiator or heat register. This product should not be placed in a built-in installation unless proper ventilation is provided.
7. Never push objects of any kind into this product through cabinet parts as they may touch dangerous voltage points or short out parts that could result in a risk of fire or electric shock. Never spill liquid of any kind on the product.
8. To reduce the risk of electric shock, do not disassemble this product, but take it to a qualified service person when some service or repair work is required. Opening or removing covers may expose you to dangerous voltages or other risks. Incorrect reassembly can cause electric shock when the appliance is subsequently used.
9. Unplug this product from the wall outlet and refer servicing to qualified service personnel under the following conditions.
 - a. When the power supply cord is damaged or frayed.
 - b. If liquid has been spilled into the product.
 - c. If the product has been exposed to rain or water.
 - d. If the product does not operate normally by following the operating instructions. Adjust only those controls that are covered by the operating instructions because improper adjustment of other controls may result in damage and will often require extensive work by a qualified technician to restore the product to normal operation.
 - e. If the product has been dropped or the cabinet has been damaged.
 - f. If the product exhibits a distinct change in performance.
10. Avoid using a telephone (other than a cordless type) during an electrical storm. There may be risk of remote electric shock from lightning.
11. Do not use the telephone to report a gas leak in the vicinity of the leak.

SAVE THESE INSTRUCTIONS

FCC AND PHONE COMPANY INFORMATION

This equipment complies with Part 68 of the FCC Rules. On the base unit of this equipment is a label that contains, among other information, the FCC Registration Number and Ringer Equivalence Number (REN) for this equipment. If requested, this information must be given to the telephone company.

The REN is useful to determine the quantity of devices you may connect to your telephone line and still have all of those devices ring when your telephone number is called. In most, but not all areas, the sum of the REN's of all devices connected to one line should not exceed five (5.0). To be certain of the number of devices you may connect to your line, as determined by the REN, you should contact your local telephone company to determine the maximum REN for your calling area.

If your equipment causes harm to the telephone network, the telephone company may discontinue your service temporarily. If possible, they will notify you in advance. But if advance notice isn't practical, you will be notified as soon as possible. You will be informed of your right to file a complaint with the FCC. Your telephone company may make changes in its facilities, equipment, operations or procedures that could effect the proper functioning of your equipment. If they do, you will be notified in advance to give you an opportunity to maintain uninterrupted telephone service.

The telephone company may ask that you disconnect this equipment from the network until the problem has been corrected or until you are sure that the equipment is not malfunctioning.

If you experience trouble with this telephone equipment, please contact the following address and phone number for information on obtaining service or repairs.

Company : Tiger Repair Department
Address : 1000 N. Butterfield Road, Unit 1023
Vernon Hills, IL 60061, U.S.A.

Customer Service: 847-816-2130

This equipment may be used on coin service provided by the telephone company. Connection to party lines is subject to state tariffs.

This phone only works with tone phone systems.

The USOC jack RJ-11C is provided. The modular jack is a compatible one for Part 68 of FCC rules compliant.

90-DAY LIMITED WARRANTY

Tiger Electronics (Tiger) warrants to the original consumer purchaser of this product that the product will be free from defects in materials or workmanship for 90 days from the date of original purchase. This warranty does not cover damages resulting from accident, negligence, improper service or use or other causes not arising out of defects in materials or workmanship.

During this 90-day warranty period, the product will either be repaired or replaced (at Tiger's option) without charge to the purchaser, when returned with proof of the date of purchase to either the dealer or to Tiger.

Product returned to Tiger without proof of the date of purchase or after the 90-day warranty period has expired, but prior to one year from the original date of purchase, will be repaired or replaced (at Tiger's option) for a service fee of U.S.\$17.00. Payments must be by check or money order payable to Tiger Electronics.

The foregoing states the purchaser's sole and exclusive remedy for any breach of warranty with respect to the product.

All product returned must be shipped prepaid and insured for loss or damage to:

Tiger Repair Department
1000 N. Butterfield Road, Unit 1023
Vernon Hills, IL 60061, USA.

The product should be carefully packed in the original box or other packing materials sufficient to avoid damage during shipment. Include a complete written description of the defect, a check if product is beyond the 90-day warranty period, and your printed name, address and telephone number.

THIS WARRANTY IS IN LIEU OF ALL OTHER WARRANTIES AND NO OTHER REPRESENTATIONS OR CLAIMS OF ANY NATURE SHALL BE BINDING ON OR OBLIGATE TIGER IN ANY WAY. ANY IMPLIED WARRANTIES APPLICABLE TO THIS PRODUCT, INCLUDING WARRANTIES OF MERCHANTABILITY AND FITNESS FOR A PARTICULAR PURPOSE, ARE LIMITED TO THE NINETY (90) DAY PERIOD DESCRIBED ABOVE. IN NO EVENT WILL TIGER BE LIABLE FOR ANY SPECIAL, INCIDENTAL, OR CONSEQUENTIAL DAMAGES RESULTING FROM POSSESSION, USE, OR MALFUNCTION OF THIS TIGER PRODUCT.

Some states do not allow limitations as to how long an implied warranty lasts and/or exclusions or limitations of incidental or consequential damages, so the above limitations and/or exclusions of liability may not apply to you. This warranty gives you specific rights, and you may also have other rights which vary from state to state.

For more information about Tiger Electronics, our products and special promotions, please visit our web site at: www.tigertoys.com.

TIGER
ELECTRONICS

A division of Hasbro, Inc.
Where Technology Comes to Play!™

® , TM, & © 2001 Tiger Electronics
All rights reserved.
980 Woodlands Parkway,
Vernon Hills, IL 60061, USA

MADE AND PRINTED IN CHINA

Download from Www.Somanuals.com. All Manuals Search And Download.



200100630IWIT-02

Free Manuals Download Website

<http://myh66.com>

<http://usermanuals.us>

<http://www.somanuals.com>

<http://www.4manuals.cc>

<http://www.manual-lib.com>

<http://www.404manual.com>

<http://www.luxmanual.com>

<http://aubethermostatmanual.com>

Golf course search by state

<http://golfingnear.com>

Email search by domain

<http://emailbydomain.com>

Auto manuals search

<http://auto.somanuals.com>

TV manuals search

<http://tv.somanuals.com>