

Owner's Manual Havis Rugged Mobile Docking Station For Dell XFR & ATG Computers

DS-DELL-100 Series / DS-DELL-220 Series

DS-DELL-101
DS-DELL-101-3
DS-DELL-103

DS-DELL-221
DS-DELL-223



Havis is pleased to provide this Owner's Manual to aid in the proper installation and use of the DS-DELL-100 Series/220 Series Docking Station for the Dell XFR & ATG laptop computers.

For questions regarding the set-up of your DS-DELL-100 Series/220 Series Docking Station, please contact Havis at 1-800-524-9900 or visit www.havis.com for additional product support and information.

This Owner's Manual applies to the following Part Numbers:

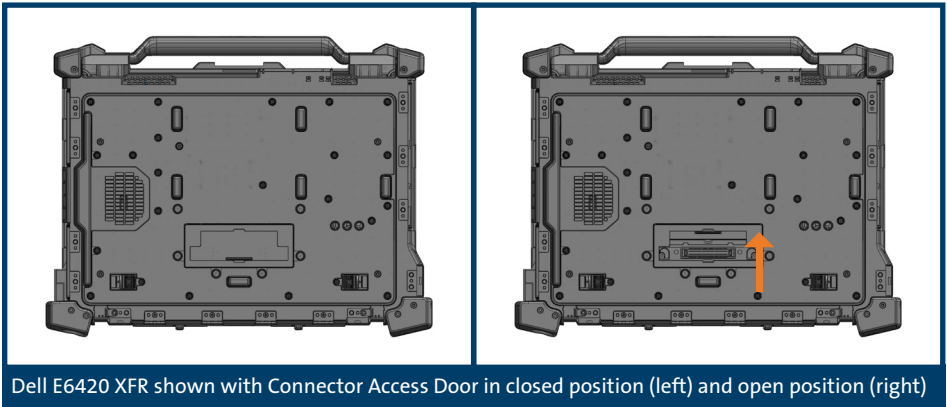
DS-DELL-101 DS-DELL-221
DS-DELL-101-3 DS-DELL-223
DS-DELL-103

⚠ WARNING

- NEVER STOW OR MOUNT THE DOCKING STATION DIRECTLY IN A VEHICLE AIRBAG DEPLOYMENT ZONE.
- DO NOT USE COMPUTER WHILE DRIVING.

⚠ CAUTION

- READ ALL INSTRUCTIONS THOROUGHLY BEFORE BEGINNING INSTALLATION.
- DO NOT MATE COMPUTER TO DOCKING STATION UNLESS COMPUTER'S DOCKING CONNECTOR ACCESS DOOR IS FULLY OPEN OR DAMAGE MAY RESULT. (SEE BELOW)



CAUTION

- **FOR SAFE & PROPER SYSTEM FUNCTION, SPECIFIC DOCKING STATION MODELS MUST BE USED WITH SPECIFIC DELL COMPUTER MODELS.**

- DS-DELL-100 SERIES (101, 103, ETC.) DOCKING STATIONS ARE INTENDED FOR USE WITH DELL E6400, E6410 & E6420 XFR COMPUTERS ONLY.
- DS-DELL-220 SERIES (221, 223) DOCKING STATIONS ARE INTENDED FOR USE WITH DELL E6400, E6410, & E6420 ATG COMPUTERS ONLY.
 - THE PORT COVERS SUPPLIED WITH DELL E6400 & E6410 ATG COMPUTERS MUST BE REMOVED PRIOR TO DOCKING.
 - THE PORT COVERS SUPPLIED WITH DELL E6420 ATG COMPUTER MAY REMAIN SECURED TO COMPUTER WHILE DOCKING.

- **COMPUTER & DOCKING STATION IDENTIFICATION:**

COMPUTER MODEL	DOCKING STATION	IDENTIFICATION
 E6400/6410/6420 XFR	 DS-DELL-100 Series	No Foot Pads on top plate. Low profile Front Hooks.
 E6400/6410/6420 ATG	 DS-DA-220 Series	Foot Pads on top plate. Macro Alignment Brackets attached.

Precautions

- Do not place metal objects or containers of liquid on top of the Docking Station
- If a malfunction occurs, immediately unplug the Power Supply and remove the laptop
- Use only the specified Power Supply (Part # LPS-105) with this Docking Station
- Do not store the Docking Station where water, moisture, steam, dust, etc. are present
- Do not connect cables into ports other than what they are specified for
- Do not leave the Docking Station in a high temperature environment (greater than 75°C, 167°F) for a long period of time

Table of Contents

Specifications	4
Parts Included	5
Port Replication Capability	5
Installation	6
Cable Management	7
Operation - Docking	9
Operation - Undocking	10

Specifications

Power Supply Input	20V DC-In
Dimensions	13.6" (34.4 cm) W x 12.7" (32.3 cm) D x 3.7" (9.4 cm) H
Weight	6.6 lbs (2.9 kg)

DS-DELL-100 Series Docking Stations for DELL E6400, E6410, E6420 XFR Computers

Operating Environment	0° C to 40° C (32° F to 104° F)
Storage Environment	-60° C to 75° C (-76° F to 167° F)

DS-DELL-220 Series Docking Stations for DELL E6400, E6410, E6420 ATG Computers

Operating Environment	0° C to 35° C (32° F to 95° F)
Storage Environment	-60° C to 75° C (-76° F to 167° F)

DECLARATION OF CONFORMITY FOR CE MARKING

Havis, Inc. declares that their DS-DELL-100 & DS-DELL-220 SERIES DOCKING STATIONS:
Are classified within the following EU Directives:

EU Electromagnetic Compatibility Directive 2004/108/EC, 2009/19/EC

And further conform with the following EU Harmonized Standards:

EN 55022 (2006) + A1 2007, EN 55024: 1998 + A1: 2001 + A2: 2003

EN 50498: 2010

Clause 7.1 Broadband Radiated Disturbances - Quasi-Peak

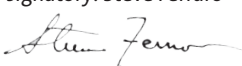
Clause 7.2 Narrowband Radiated Disturbances - Average

Clause 7.3 Conducted Radiated Disturbances - Severity Level 2

Dated: September 28 , 2011

Position of signatory: Chief Information Officer / Chief Financial Officer

Name of signatory: Steve Ferraro

Signed: 

Parts Included

Docking Station

Macro Alignment Brackets
(DS-DELL-220 Series only)

Docking Connector

Lock

Latch Handle

Strain Relief Points

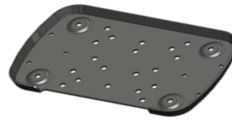
Foot Pads
(DS-DELL-220 Series only)

Front Hooks

Power Button/LED



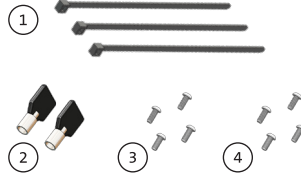
Mounting Bracket



Hardware Kit

This Hardware Kit includes:

1. Zip Ties (4)
2. Keys (2)
3. 1/4"-20 Screws (4)
4. M5 Screws (4)



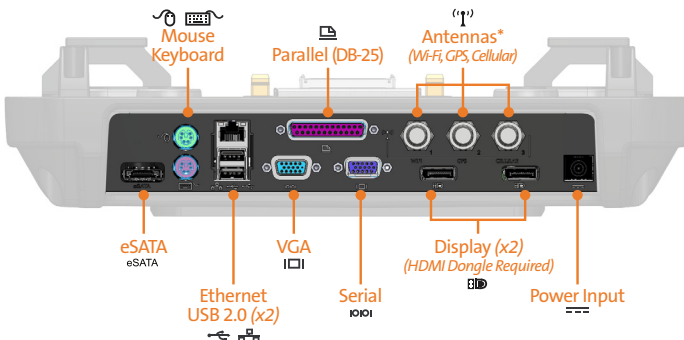
Tools required for installation:

- 3mm Hex Drive
(For attaching Mounting Bracket to Docking Station with M5 Screws)

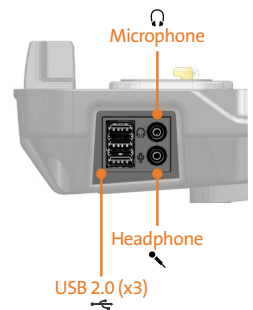
- 5/32" Hex Drive
(For attaching Mounting Bracket to Motion Device with 1/4"-20 Screws)

Port Replication Capability

Rearward Connectivity * (Antennas for DS-DELL-101-3 only)



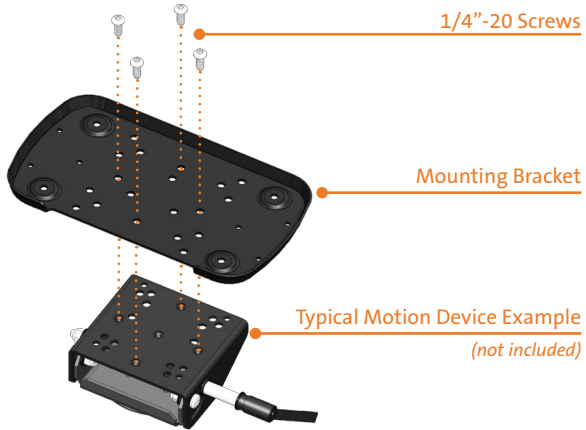
Side Connectivity



Installation

- 1) Install the Mounting Bracket to the Motion Device using (4) 1/4"-20 screws (Hardware Kit Item 3). Torque screws to 120 in-lbs (13.4Nm) \pm 10%.

NOTE: Numerous hole patterns present in Mounting Bracket will accommodate Havis Motion Devices as well as most competitors.



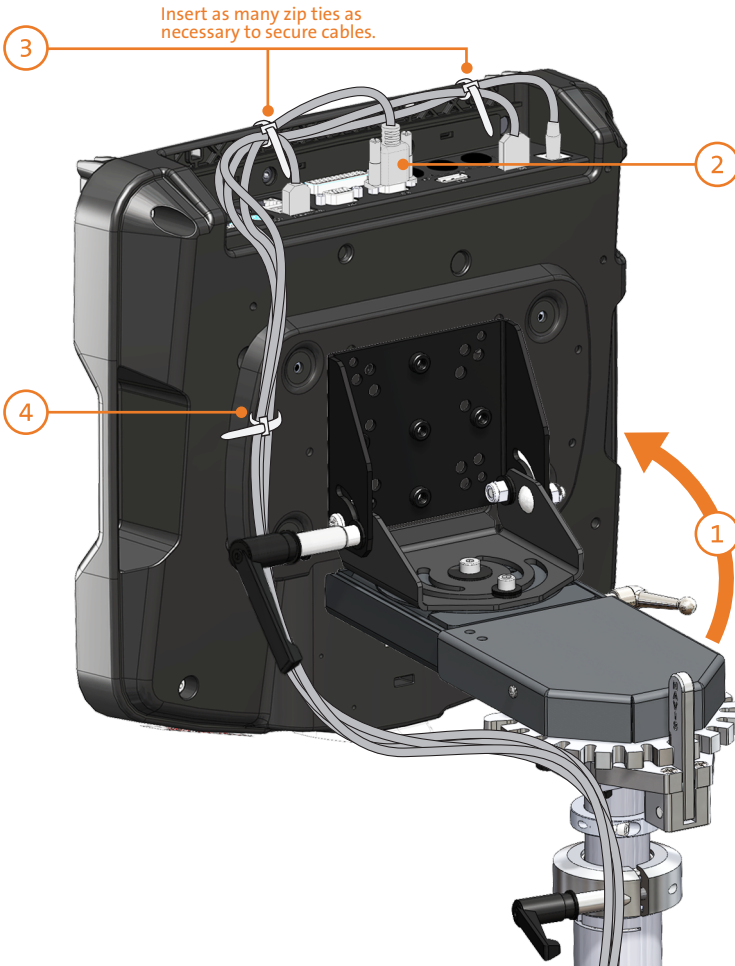
- 2) Lower the Docking Station to the Mounting Bracket as shown and secure with (4) M5 screws (Hardware Kit Item 4). Torque screws to 25 in-lbs (2.8 Nm) \pm 10%.



NOTE: We recommend applying a drop of medium strength (blue) thread locking adhesive to the threads of all fasteners.

Cable Management

- 1) Tip the Docking Station forward to a position that is comfortable to work with.
- 2) Install all cables that are necessary for computing needs.
- 3) Use Zip Ties (Hardware Kit Item 1) to strain relieve cables to the Strain Relief Points at rear of Docking Station.
- 4) Gather all cables to one side and tie off to unused holes on underside of Docking Station.



Cable Management (*continued*)

- 5) Create a service loop with cables to ensure that no tension is on the connectors and to enable intended motion.
- 6) Tie off cables onto a stationary part of the mounting system.
(*Mounting system not included with Docking Station*)

5

This loop must be large enough to allow full range of expected rotation and extension without stressing connections.

6

Collect cables to secure to the mounting system

(*Note: mounting system not included*)



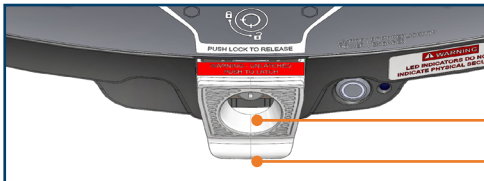
Operation - Docking

CAUTION

- DO NOT MATE COMPUTER TO DOCKING STATION UNLESS COMPUTER'S DOCKING CONNECTOR ACCESS DOOR IS FULLY OPEN OR DAMAGE MAY RESULT.
- DO NOT FORCE LAPTOP ONTO DOCKING STATION. IF THERE IS RESISTANCE, CHECK ALIGNMENT OF COMPUTER ON DOCKING STATION.

- 1) To load the computer, first ensure Docking Station is unlatched by pushing the Lock to release the Latch Handle. Once Docking Station unlatches, release pressure on Lock to allow the Latch Handle to extend fully.

Note: Red warning label on Latch Handle is visible when fully extended.

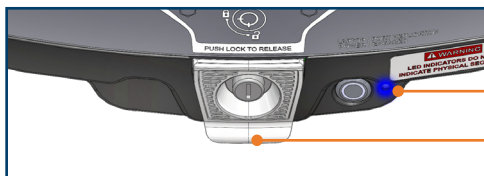
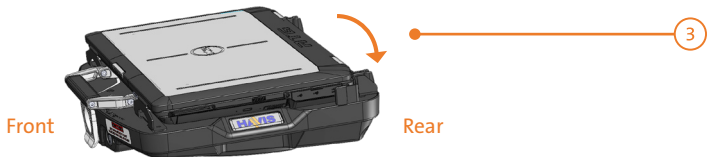


- 2) With rear of computer elevated, load front of computer into Docking Station by aligning Front Hooks with the appropriate recesses in the computer case.



- 3) Lower rear of computer onto Docking Connector. Blue Port Replication LED will illuminate once computer is properly seated.

- 4) With computer seated on Docking Station, push in the Latch Handle to secure computer to Docking Station.

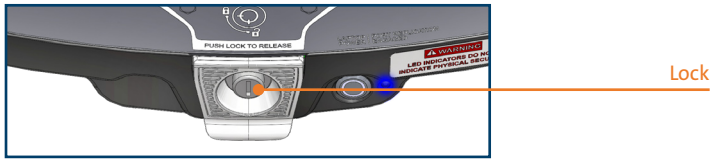


WARNING

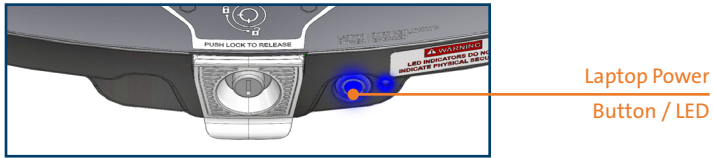
- LED INDICATORS DO NOT INDICATE PHYSICAL SECURITY
- DOCKING STATION MUST BE LATCHED AT ALL TIMES WHILE VEHICLE IS IN MOTION

Operation - Docking (continued)

- 5) For theft deterrence, secure computer by locking Docking Station with supplied key (Hardware Kit Item 2).



- 6) Power on computer. The Laptop Power Button LED will illuminate blue to indicate proper system function. Once docked, the Laptop Power Button may be used to power computer on/off.



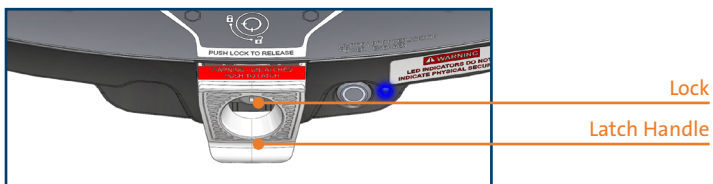
Operation - Undocking

- 1) If previously locked, unlock Docking Station using supplied key.



- 2) To release Latch Handle, press in the Lock, and the Latch Handle will spring open to the Unlatched position.

Note: Red warning label on Latch Handle is visible when fully extended.



- 3) Once unlatched, grab both sides of computer and carefully lift out of Docking Station, rear end first.



Related Products

Havis offers a wide variety of accessory products specifically for use with the DS-DELL-100 & DS-DELL-220 Series Docking Station. For more information or to order, please visit www.havis.com.



LPS-105

90W Power Supply

External power supply and cable for Dell Laptops with cigarette lighter adaptor.



DS-DA-408

Screen Stiffener

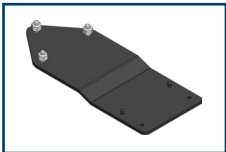
Secure your laptop screen to prevent excess wear and reduce vibration while in use.



DS-DA-102

USB Powered Light

Soft red LED light illuminates the laptop keyboard for night viewing.



DS-DA-208

Card Reader Mounting Bracket

Mount an E-Seek Model 250 card reader to the side of the Docking Station.

(Bracket can be customized for other Card Reader Models)

Interactive Online Catalog

Our interactive catalog is an easy-to-use, full color, online version of our printed catalog.

Visit www.haviscatalog.com for direct access to the Interactive Catalog.





Havis, Inc.

75 Jacksonville Road, PO Box 2099
Warminster, PA 18974

47801 Anchor Court
Plymouth, MI 48170

www.havis.com 1-800-524-9900

Free Manuals Download Website

<http://myh66.com>

<http://usermanuals.us>

<http://www.somanuals.com>

<http://www.4manuals.cc>

<http://www.manual-lib.com>

<http://www.404manual.com>

<http://www.luxmanual.com>

<http://aubethermostatmanual.com>

Golf course search by state

<http://golfingnear.com>

Email search by domain

<http://emailbydomain.com>

Auto manuals search

<http://auto.somanuals.com>

TV manuals search

<http://tv.somanuals.com>