



H-DS20L

USB 2.0 Docking Station

Web: www.hawkingtech.com

Email: techsupport@hawkingtech.com

© Copyright 2003 Hawking Technologies, All rights reserved.



FCC Warning

This equipment has been tested and found to comply with the regulations for a Class B digital device, pursuant to Part 15 of the FCC Rules. These limits are designed to provide reasonable protection against harmful interference when the equipment is operated in a commercial environment. This equipment generates, uses, and can radiate radio frequency energy and, if not installed and used in accordance with this user's guide, may cause harmful interference to radio communications. Operation of this equipment in a residential area is likely to cause harmful interference, in which case the user will be required to correct the interference at his/her own expense.

CE Mark Warning

This is a Class B product. In a domestic environment, this product may cause radio interference, in which case the user may be required to take adequate measures.

VCCI Mark Warning

注意

この装置は、情報処理装置等電波障害自主規制協議会 (VCCI) の基準に基づく第一種情報技術装置です。この装置を家庭環境で使用すると電波妨害を引き起こすことがあります。この場合には使用者が適切な対策を講ずるよう要求されることがあります。

LIMITED WARRANTY

Hawking Technology guarantees that every USB Docking Station is free from physical defects in material and workmanship under normal use for two (2) years from the date of purchase. If the product proves defective during this two-year warranty period, call Hawking Customer Service in order to obtain a Return Authorization number. Warranty is for repair or replacement only. Hawking Technology does not issue any refunds. BE SURE TO HAVE YOUR PROOF OF PURCHASE. RETURN REQUESTS CANNOT BE PROCESSED WITHOUT PROOF OF PURCHASE. When returning a product, mark the Return Authorization number clearly on the outside of the package and include your original proof of purchase. IN NO EVENT SHALL HAWKING TECHNOLOGY'S LIABILITY EXCEED THE PRICE PAID FOR THE PRODUCT FROM DIRECT, INDIRECT, SPECIAL, INCIDENTAL OR CONSEQUENTIAL DAMAGES RESULTING FROM THE USE OF THE PRODUCT, ITS ACCOMPANYING SOFTWARE OR ITS DOCUMENTATION. Hawking Technology makes no warranty or representation, expressed, implied or statutory, with respect to its products or the contents or use of this documentation and all accompanying software, and specifically disclaims its quality, performance, merchantability, or fitness for any particular purpose. Hawking Technology reserves the right to revise or update its products, software, or documentation without obligation to notify any individual or entity. Please direct all inquiries to: techsupport@hawkingtech.com.



Table of Contents

H-DS20L USB 2.0 Docking Station

Basic Overview.....	4
Safety Instructions.....	4
Introduction.....	4
Features.....	4
System Requirements.....	5
Package Contents.....	5
Supported Operating Systems.....	5
Technical Specifications.....	6
Hardware Installation.....	7
Software Installation.....	9



Basic Overview

H-DS20L USB 2.0 Docking Station

SAFETY INSTRUCTIONS

1. Always read the safety instructions carefully.
2. Keep this User's Manual for future reference.
3. Keep this equipment away from humid environments.
4. Lay this equipment on a reliable, flat surface before setting it up.
5. If any of the following situations arise, have the equipment checked by a service personnel:
 - The equipment has been exposed to moisture
 - The equipment has been dropped and/or damaged
 - The equipment has obvious signs of breakage
 - The equipment has not been working correctly or you could not get it to work according to the User's Manual.

INTRODUCTION

Hawking Technology's USB 2.0 Docking Station is a unique expansion unit specially designed to transform a Notebook Computer into a desktop equivalent. It provides several desktop system connectivity capacities. The USB docking station allows you to add up to four USB ports to your PC and up to a total of 127 additional hubs and other devices. Installing the USB Docking Station is simple - there are no confusing cables, plugs, or IRQs (Interrupt requests) to worry about. Just plug in your peripherals and begin using them without re-booting your PC.

FEATURES

- One USB Upstream Port Supports Full Speed (480Mbps).
- Two USB Downstream Ports
- One PS/2 Keyboard Port
- One PS/2 Mouse Port
- One USB File Transfer data link port
- One Serial Port
- One Printer Port
- Standard IEEE-1284 parallel port
- The Docking Station Uses USB self power
- One 10/100 Ethernet LAN port (USB 2.0 Hi-Speed Docking Station With LAN only)



Basic Overview

H-DS20L USB 2.0 Docking Station

SYSTEM REQUIREMENTS

- PC or Mac
- MS Windows 98SE, ME, 2000, XP & Mac OS9.x & 10.1
- Available USB Port
- 64 MB RAM or above
- Pentium 233 MHz or higher

PACKAGE CONTENTS

- Docking Station – 1pc
- DC5V Power supply - 1pc
- User's Manual - 1pc
- Software driver CD-ROM - 1pc
- Type-A to Type-B USB Cable - 1pc

SUPPORTED OPERATING SYSTEMS

- Windows 98SE, ME, 2000, XP
- Mac OS 9.x and OS 10.1



Technical Specifications

H-DS20L USB 2.0 Docking Station

Type	Docking Station With LAN	
Computer Port	1 upstream port Type B receptacle	
I/O Ports	2 USB 2.0 downstream ports, Type A receptacle	
	1 PS/2 Keyboard port Mini Din 6-pin	
	1 PS/2 Mouse port Mini Din 6-pin	
	1 File Transfer port Type B receptacle	
	1 serial port DB 9-pin male	
	1 parallel port DB 25-pin female	
	1 10/100M LAN port 8P8C RJ-45 shielding	
Emission	CE, FCC	
Power	AC Input 100 V~240V DC Output 5V, 2.5A	
Environments	Operating temperature: 0C~70C Storage temperature: -40C~70~C Humidity: 90% RH (No condensing)	



Hardware Installation

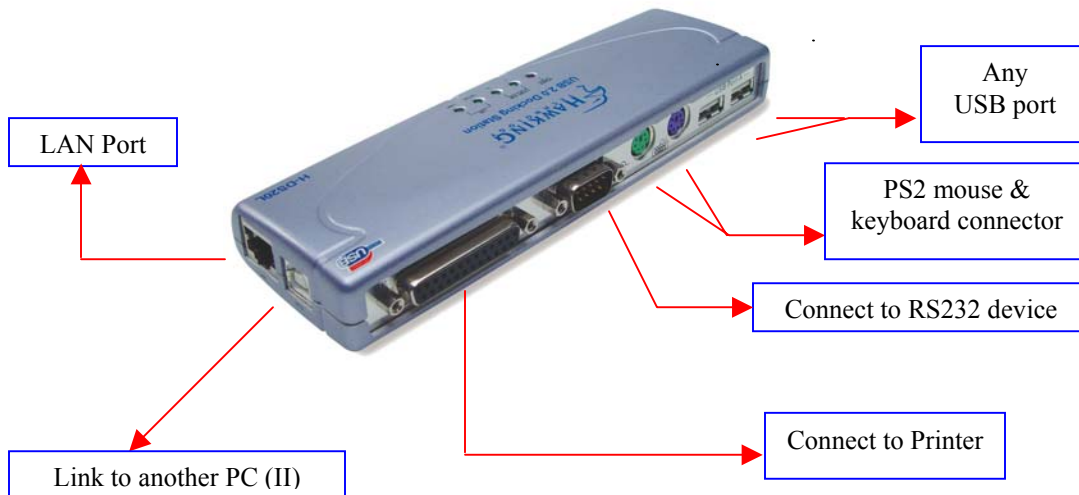
H-DS20L USB 2.0 Docking Station

LED Status Indicators

Once the USB Port Replicator is connected, the Hub Link LED is lit green and the LAN LED is lit after the Ethernet cable is connected.

<u>Type</u>	<u># of LEDs</u>	<u>Color</u>	<u>Descriptions</u>
Docking Station w/ LAN	1	Red	The AC to DC power adapter is plugged into the power port
	2	Green	When any of the hub ports, which are connected to USB devices, are activated.
	2	Green	The LED for your Ethernet LAN port is to indicate 10/100 Mbps speed.

Figure 1. USB Port Replicator Ports





Hardware Installation

H-DS20L USB 2.0 Docking Station

Figure 2. Upstream Port and Power Connector



- Connect the power adapter and plug it into the back of the docking station.
- Find an unused electrical outlet and plug it in the power adapter.
- Plug the flat end (A plug) of the USB cable into a free USB port on your PC.
- Plug the square end (B plug) of the USB cable into the USB upstream connector located on the back of the docking station.
- At this point, Windows will automatically find the docking station and start installing its drivers. Windows will prompt you for the software. See the next section for details on how to install the software.

If you are not sure what version of Windows you are running, click on “Start”, “Settings”, “Control Panel”, then double-click on “System.” An applet will appear and provide you with your system’s information.



Software Installation

H-DS20L USB 2.0 Docking Station

1. Two-Port Hub

Before you connect a USB device to one of the Hub ports, please follow the software installation instructions provided in the subsequent pages of this User's Manual.

2. PS/2 ports (Keyboard and Mouse port)

If you connect a PS/2 keyboard or mouse to the docking station and you are using a PC, you will not need the software driver. However, if you are using a Mac, you will need to install the software driver on the CD-ROM onto your computer. The software drivers also allow Mac users to access PS/2 ports. To do this, please access the file name "USB_PS2_Converter" which is located on the Mac directory of the CD-ROM.

3. File Transfer Port

You will need a type-A to Type-B USB cable (included in the package) for connecting two PCs, two Macs, or a PC and a Mac. For Windows, please access the root directory of the CD-ROM. For Macs, please access the file name "Installer". Please refer to the "Operation" section for further instructions/clarifications.

NOTE: At the time of this user's manual publication, the file transfer port supports the software drivers for Windows 98, 2000, ME, XP and Macs.

4. Serial Port

If you connect a serial port device (e.g., Modem) to the docking station and the docking station is connected to a PC, you will need to reset the upstream port. Because serial ports do not have hot plug and play interfaces, you must reset this function to locate your device on the serial port.

5. Parallel Port

You can attach your computer to most parallel printer devices through this port to get a faster printing result.

6. LAN port (only for Docking Station With LAN)

This port is designed to support 10/100 Mbps Ethernet. It also complies with the IEEE 802.3u, 100BASE-TX, and IEEE 802.3 10BASE-T standards.



Software Installation

H-DS20L USB 2.0 Docking Station

Installation for Windows 98SE & ME



1. The H-DS20L Install wizard searches for new drivers. Click **Next** to continue.



2. Select "Search for the best driver for your device [Recommended]," and click **Next** to continue.



Software Installation

H-DS20L USB 2.0 Docking Station



3. Select "CD-ROM drive", and click **Next** to continue.



4. Windows will now search for the driver file for the device. Click **Next** to continue.

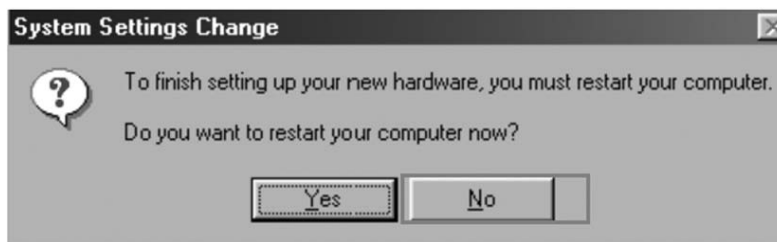


Software Installation

H-DS20L USB 2.0 Docking Station



5. Windows has finished installing the software. Click **Finish** to end the Wizard.
* NOTE: Repeat the previous steps as needed.



6. If your operating system is Windows ME, click **No** to continue. Otherwise, click **Yes** to reboot your computer.



Software Installation

H-DS20L USB 2.0 Docking Station



7. The "Welcome to the Install Shield Wizard for PC-Linq" dialog window appears. Click **Next** to continue.



8. Setup will add the program icon to the Program Folder listed below. Click **Next** to continue.
9. Windows has finished installing the software. Click **Finish** to end the Wizard.



Software Installation

H-DS20L USB 2.0 Docking Station

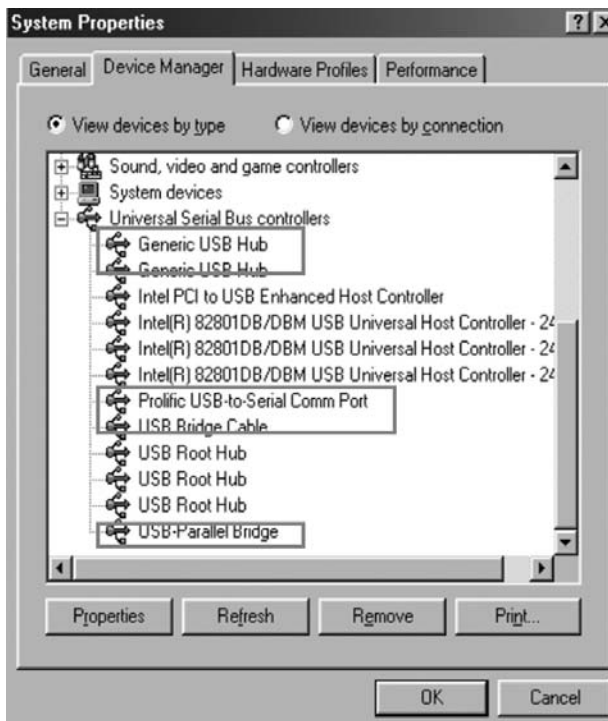


10. The PC-Linq icon will appear on the desktop.

Installation verification

Because the docking station is USB 2.0, the hub driver is based on the host device. The device name may vary on your host device driver.

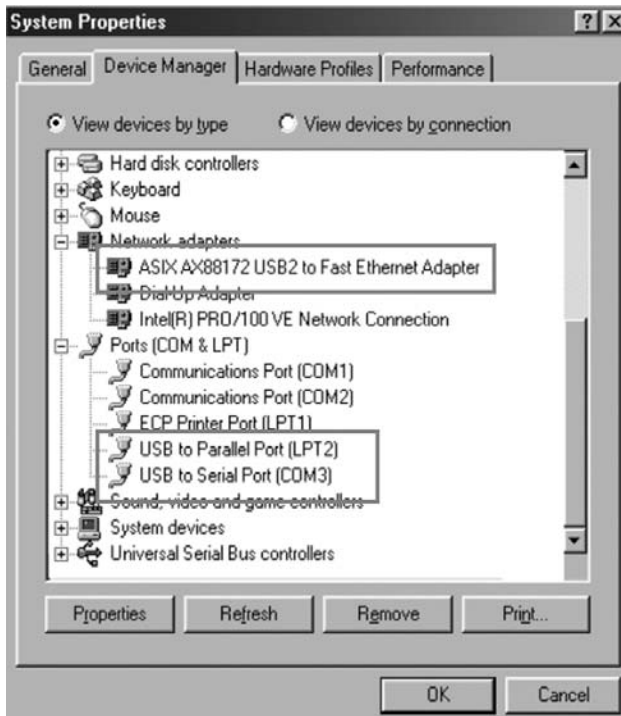
Windows 98SE





Software Installation

H-DS20L USB 2.0 Docking Station





Software Installation

H-DS20L USB 2.0 Docking Station

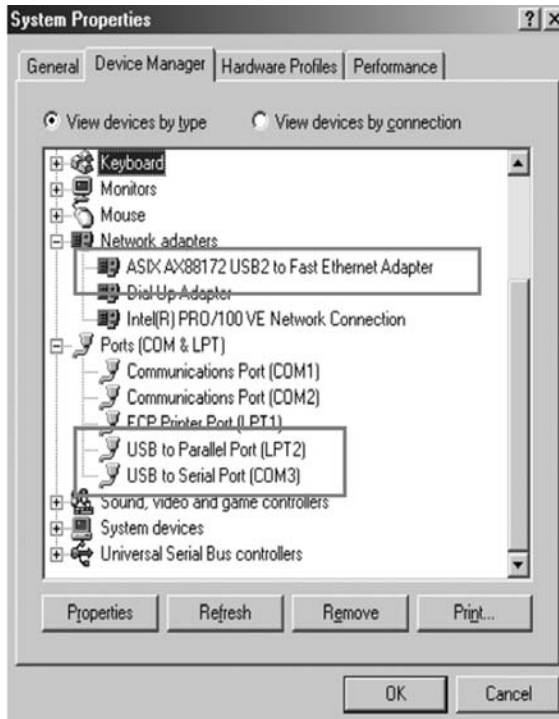
Windows ME





Software Installation

H-DS20L USB 2.0 Docking Station





Software Installation

H-DS20L USB 2.0 Docking Station

Installation for Windows 2000



1. The H-DS20L Install wizard helps you install a device driver. Click **Next** to continue.



2. Select "Search for a suitable driver for my device [recommended]." Click **Next** to continue.



Software Installation

H-DS20L USB 2.0 Docking Station



3. Select "Floppy disk drives" and click **Next** to continue.

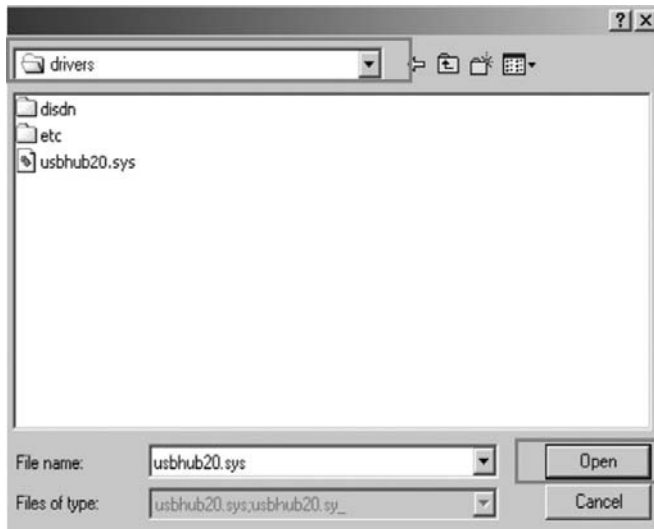


4. The wizard found a driver. Click **Next** to continue.

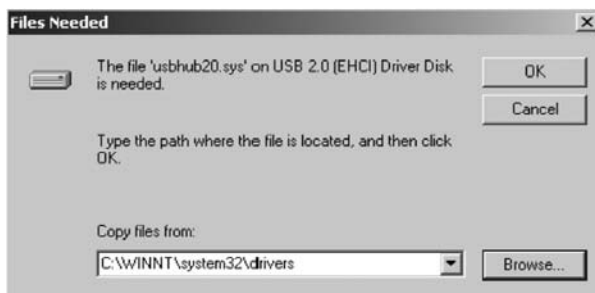


Software Installation

H-DS20L USB 2.0 Docking Station



5. Select "C:\WINNT\system32\drivers" for built-in hub driver (usbhub20.sys). Click **Open** to continue.



6. Click **OK** to continue.



Software Installation

H-DS20L USB 2.0 Docking Station



7. Windows has finished installing the software. Click **Finish** to continue.



8. This wizard helps you install a device driver. Click **Next** to continue.



Software Installation

H-DS20L USB 2.0 Docking Station



9. Select "Search for a suitable driver for my device [recommended]." Click **Next** to continue.



10. Select CD-ROM drives and click **Next** to continue.



Software Installation

H-DS20L USB 2.0 Docking Station



11. The wizard found a driver. Click **Next** to continue.

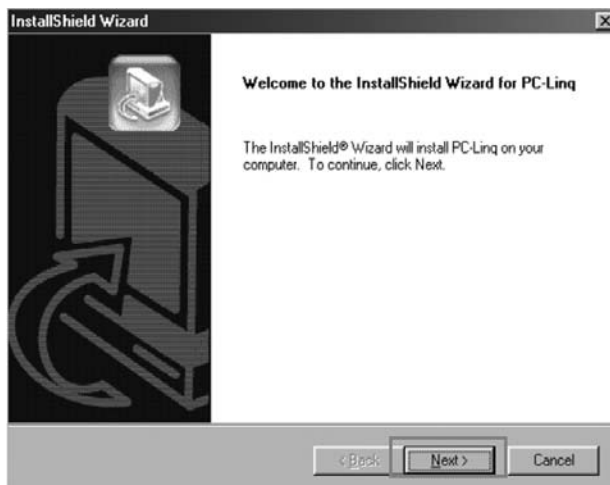


12. Windows has finished installing the software. Click **Finish** to continue.
* NOTE: Repeat the previous steps as needed.



Software Installation

H-DS20L USB 2.0 Docking Station



13. The "Welcome to the Install Shield Wizard for PC-linq" dialog window appears. Click **Next** to continue.



14. Setup will add the program icon to the Program Folder. You may type a new folder name, or select the default folder name. Click **Next** to continue. The PC-Linq icon will appear on the desktop.



Note: If you connect the docking station to a PC via a USB 2.0 port, PCI card, or hub, it will ask for the operating system for the USB 2.0 driver.



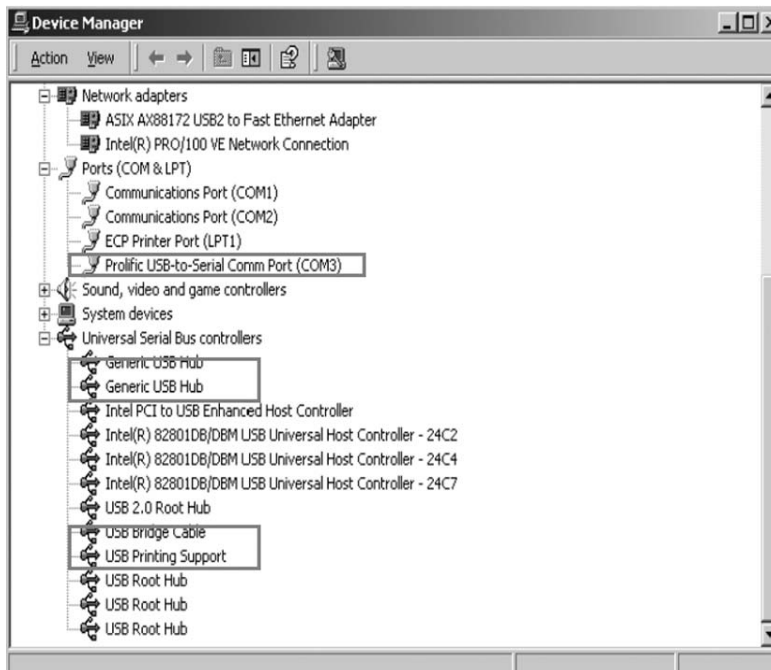
Software Installation

H-DS20L USB 2.0 Docking Station

Installation verification

Because our docking station is USB 2.0, the hub driver is based on the host device. The device name may vary on your host device driver.

Windows 2000





Software Installation

H-DS20L USB 2.0 Docking Station

Installation for Windows XP



1. The H-DS20L Install wizard helps you install a device driver. Select "Install the software automatically [Recommended]." Click **Next** to continue.



2. Click **Continue Anyway**.

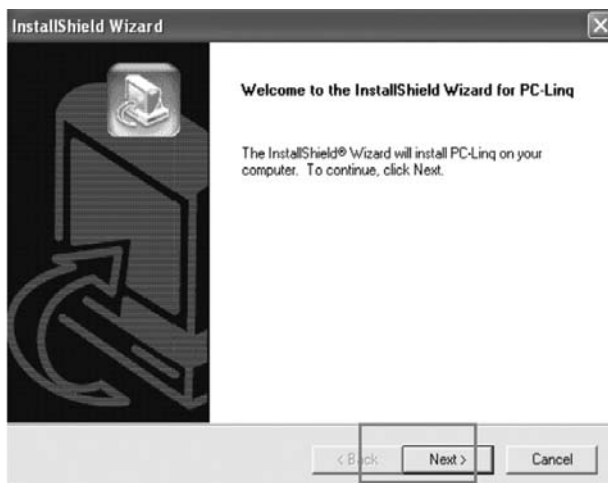


Software Installation

H-DS20L USB 2.0 Docking Station



3. The wizard has finished installing the software. Click **Finish** to continue.
* NOTE: Repeat the previous steps as needed.



4. The "Welcome to the Install Shield Wizard for PC-linq" dialog window appears. Click **Next** to continue.



Software Installation

H-DS20L USB 2.0 Docking Station



5. Setup will add the program icon to the Program Folder. You may type a new folder name, or select the default folder name. Click **Next** to continue.

The PC-Linq icon  will appear on the desktop.

Note: If you connect the docking station to a PC via a USB 2.0 port, PCI card, or hub, it will ask for the operating system for the USB 2.0 driver.



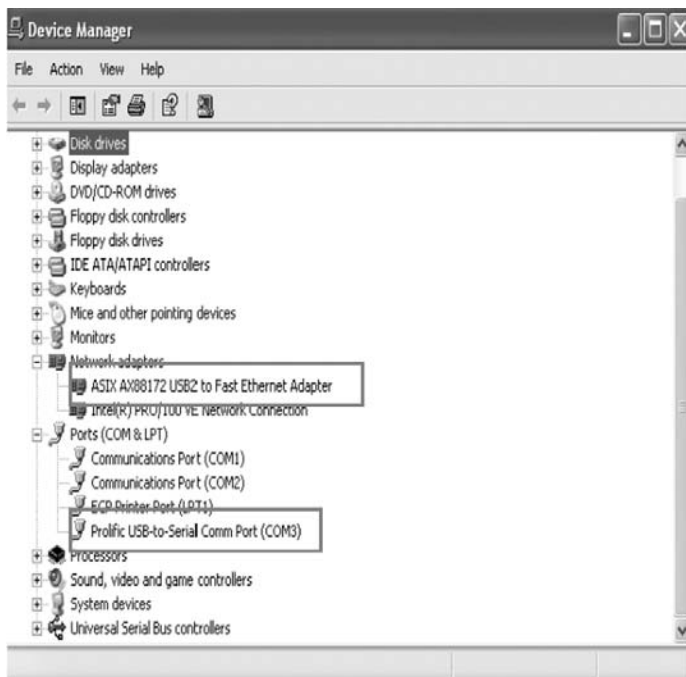
Software Installation

H-DS20L USB 2.0 Docking Station

Installation verification

Because the docking station is USB 2.0, the hub driver is based on the host device. The device name may vary on your host device driver.

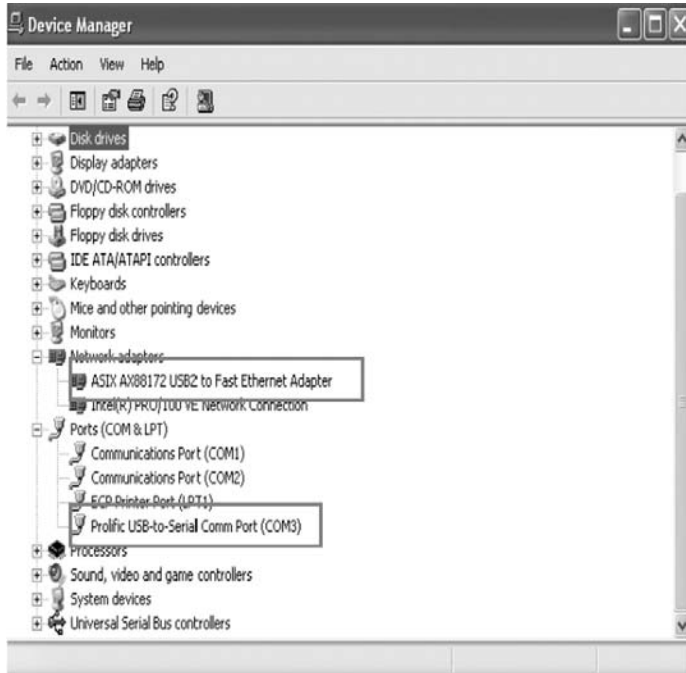
Windows XP





Software Installation

H-DS20L USB 2.0 Docking Station



Free Manuals Download Website

<http://myh66.com>

<http://usermanuals.us>

<http://www.somanuals.com>

<http://www.4manuals.cc>

<http://www.manual-lib.com>

<http://www.404manual.com>

<http://www.luxmanual.com>

<http://aubethermostatmanual.com>

Golf course search by state

<http://golfingnear.com>

Email search by domain

<http://emailbydomain.com>

Auto manuals search

<http://auto.somanuals.com>

TV manuals search

<http://tv.somanuals.com>