

Columbia Bay Insert

QUADRA-FIRE[®]





Columbia Bay Insert

QUADRA-FIRE

NOTHING BURNS LIKE A QUAD

The Columbia Bay Insert from Quadra-Fire turns an ordinary fireplace into a thing of beauty, and a night at home into family memories around the fire. Enjoy the romantic glow from a fire so real you'll be looking for the woodpile. Door crowns and grilles in gold or satin nickel add the perfect finishing touch to the view through the large bay window. You'll also enjoy the high efficiency and outstanding performance of the Columbia Bay Insert.

Standard Features

- Expansive bay window
- TrueGlow burner
- PyroGlo "real wood" logs
- Black door/rod grille
- Ceramic brick refractory interior
- Durable steel construction
- Automatic 160 cfm variable speed blower
- Manufactured home approved
- Bedroom approved
- Limited lifetime warranty

Options

- Door Crown in Gold or Satin Nickel
- Rod Grille in Gold or Satin Nickel
- Three Panel Sizes with Gold or Satin Nickel Trim
- Thermostatic Remote Controls
- Wall Thermostat

TrueGlow Burner

The TrueGlow Burner, an exclusive from Quadra-Fire, sets a new standard for realism. The ceramic burner is molded from real wood pieces and coals. Flames rise from gas ports distributed throughout the glowing coal bed and lower logs, producing an incredibly active and varied fire. No need to hide the burner anymore -- the TrueGlow burner proudly takes center stage, with an appearance that is phenomenal whether it's burning or not.

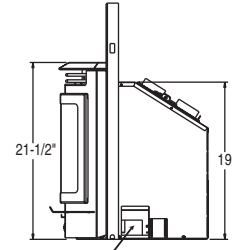
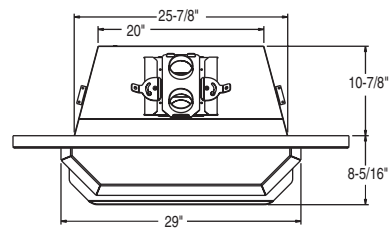


Quadra-Fire offers a limited Lifetime Warranty on our gas heating appliances to the original purchaser for the lifetime of the appliance, to be free from defects in material and workmanship. See your authorized Quadra-Fire dealer for details.



Available From:

Dimensions



Rocker switch & wiring, Electrical Connection, and Gas Connection accessible here.

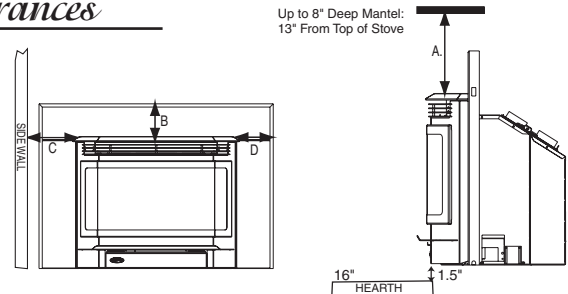
MINIMUM FIREBOX OPENING

Height -	Front: 19"	Rear: 13 1/2"
Width -	Front: 26"	Rear: 20"
Depth -	Top: 13"	Bottom: 13"

PANEL SIZES

Standard ...	28 1/2" x 40"
Medium	31" x 44"
Large	33" x 46"

Clearances



- A Top Plate to 8" Deep Mantel13"
- B Top Plate to 3/4" Trim Above.....10"
- C Top Plate to Side Wall.....10"
- D Top Plate to 3/4" Trim at Sides.....7"

Technical Data

Width	29"	Flue Size.....	3" co-linear
Height	21 1/2"	Standing Pilot Ignition	Yes
Depth	19 3/16"	Mobile Home Approved..	Yes
Shipping Weight.....	146 lbs.	Bedroom Approved	Yes

Performance

Heating Capacity.....	Up to 1,500 sq. ft.*
BTU Input NG	22,000 - 30,000
BTU Input LP	23,000 - 30,000
Efficiency NG.....	83%
Efficiency LP	84%
Convection Blower.....	160 cfm

IMPORTANT - READ BEFORE YOU INSTALL!

Refer to the Owner/Installation Manual for complete clearance requirements and specifications. The images and descriptions in this brochure are provided to assist you in product selection only.

*Heating capacity rating is to be used as a guideline only and may differ slightly due to climate, building construction and condition, amount and quality of insulation, location of the heater, and air movement in the room.

Visit our Website at www.quadrafire.com

Quadra-Fire is a registered trademark of Hearth & Home Technologies. Product specifications and pricing subject to change without notice. The Quadra-Fire Columbia Bay Insert direct vent gas appliance is tested and listed by OMNI-Test Labs, Inc., of Beaverton, Oregon and is approved for Canada and USA to ANSI Z21.88-2002/CSA 2.33-2002, Vented Gas Fireplace Heaters, and applicable sections of UL307b "Gas Burning Heating Appliances for Manufactured Homes and Recreational Vehicles", and CAN/CGA 2.17-M91 "Gas Fired Appliances for Use at High Altitudes."

Free Manuals Download Website

<http://myh66.com>

<http://usermanuals.us>

<http://www.somanuals.com>

<http://www.4manuals.cc>

<http://www.manual-lib.com>

<http://www.404manual.com>

<http://www.luxmanual.com>

<http://aubethermostatmanual.com>

Golf course search by state

<http://golfingnear.com>

Email search by domain

<http://emailbydomain.com>

Auto manuals search

<http://auto.somanuals.com>

TV manuals search

<http://tv.somanuals.com>