

Honeywell Video Systems Subject: Control HNDR-S 4848 DVR by VideoBlox HEGS5BLX

Introduction

This document describes the Protocol Interface Translator (PIT) operation specific to the Honeywell HNDR-S series DVR. For further details on the PIT, please refer to the PIT User manual. For further details on the DVR, please refer to the appropriate Honeywell HNDR-S DVR manual.

Quick Start Switch Settings

Output Protocol	S1/8	S1/7	S1/6	S1/5	S1/4	S1/3	S1/2	S1/1
	Valid Function	Valid Function	Valid Function	Valid Function	ASCII string mode	ASCII string mode	ASCII string mode	ASCII string mode
	Off	Off	Off	Off	On	On	On	On

Address	S2/8	S2/7	S2/6	S2/5	S2/4	S2/3	S2/2	S2/1
Switch Legend	Address 7	Address 6	Address 5	Address 4	Address 3	Address 2	Address 1	Address 0
0 (B/cast)	Off	Off	Off	Off	Off	Off	Off	Off

Input Protocol	S3/8	S3/7	S3/6	S3/5	S3/4	S3/3	S3/2	S3/1
	Slave Port Baud	Slave Port Baud	Master Port Baud	Master Port Baud	Input Type	Input Type	Input Type	Input Type
Bossware	On	Off	On	Off	On	On	On	Off

The above setting set the PIT as follows:

Receive Betatech compatible Bossware control messages on the RS422 slave port of the PIT at 19.2K baud. The PIT unit address (S2/1 - S2/8 to OFF position) is set to broadcast, so all addresses will be translated. If want to control specific unit of DVR, set the dip switch S2/1 – S2/8 of PIT address and add PIT per DVR. (It is tested the address from 1 to 128.)

Unit ID	S2/8	S2/7	S2/6	S2/5	S2/4	S2/3	S2/2	S2/1
1	Off	Off	Off	Off	Off	Off	Off	On
2	Off	Off	Off	Off	Off	Off	On	Off
3	Off	Off	Off	Off	Off	Off	On	On
4	Off	Off	Off	Off	Off	On	Off	Off
5	Off	Off	Off	Off	Off	On	Off	On
:								
255	On	On	On	On	On	On	On	On

Transmit Honeywell HNDR-S control messages on the RS422 master port at 9600 baud, 8, N, 1 .

Note: To control HNDR-S series DVR, the DVR firmware should be 1.0.17 or later.

(Tested firmware: HVBCPUX – 4.96x HVBCFG – 3.08 (Build 32) HVBPIT44 – 3.03)

Hardware Configuration

- Connect CPU RS422 Master Port to Slave Port of HVBPIT44.
- Connect Master Port of HVBPIT44 to HNDR-S Com 2 (RS-485).


Pin Number	CPU RS422 Master Port (DB9 Female)	HVBPIT44 Slave Port (DB9 Female)
1	Tx-	Rx-
2	Tx+	Rx+
3	Rx+	Tx+
4	Rx-	Tx-
5	Signal Gnd	Signal Gnd
6	+12V source	+12V input
7	NC	NC
8	NC	NC
9	Ground	Ground

Pin Number	HVBPIT44 Master Port (DB9 Female)	HRHD-S Com 2
1	Tx-	Tx
2	Tx+	Rx

Device Configuration

Go to Control page to configure external CCTV peripherals which may be controlled by VideoBloX keyboard.

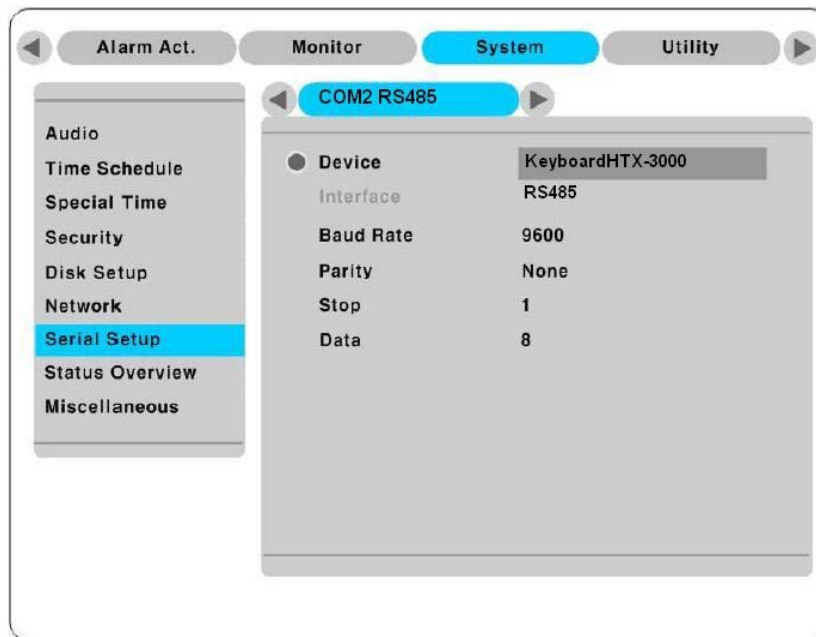


1. Copy the HNDR-S.db and HNDR-S.mb files to root directory "C:\Program Files\Honeywell\VBloXCFG\DBF"
2. Execute the VbloXCFG software and go to "Control" page.
3. Select the "Device Type" which is to be configured.
4. Click  icon to browse "HNDR-S.db" which is locate in "C:\Program Files\Honeywell\VBloXCFG\DBF"
5. Set "Com Port" to "1" if the control signal to the device is connected to the VideoBloX CPU master communications port.
6. Set the "Control Type" to the type of interface used to control the external device.
7. Set "Switch Offset" to "-1" if no automatic video switch operation is required when the device is selected. The offset will be added to the selected device number and the resulting value will be used as the matrix video input channel which will be selected. e.g. Switch Offset =29, the first channel of HNDR-S DVR is input 30.
8. Click "Download" button to download after changed.

HNDR-S 4848 DVR Configuration

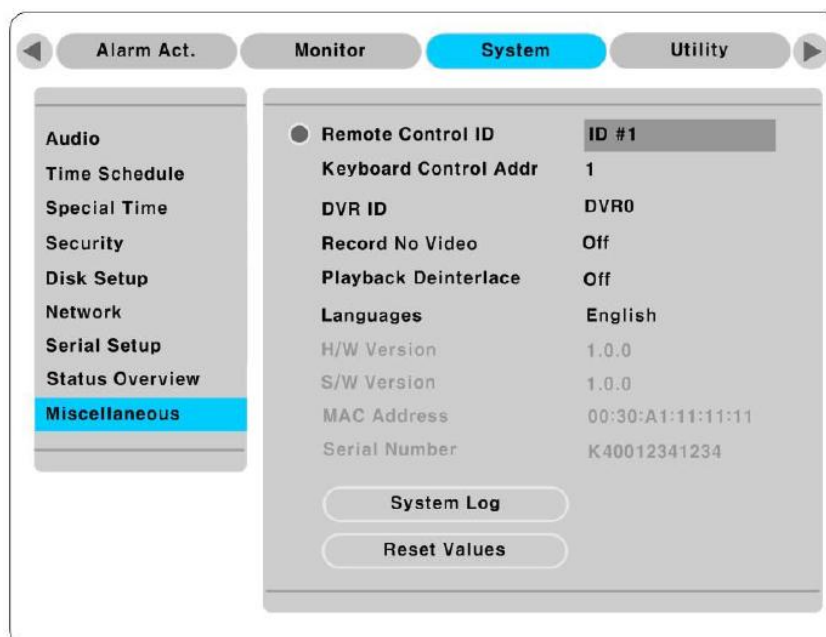
1. Configure Communication port

- a. Push **Menu** button of DVR and enter the DVR setting menu.
- b. Move to **System** menu and select **Serial Setup**.
- c. Move to **COM2 485** and select **Keyboard HTX-3000** as below figure.



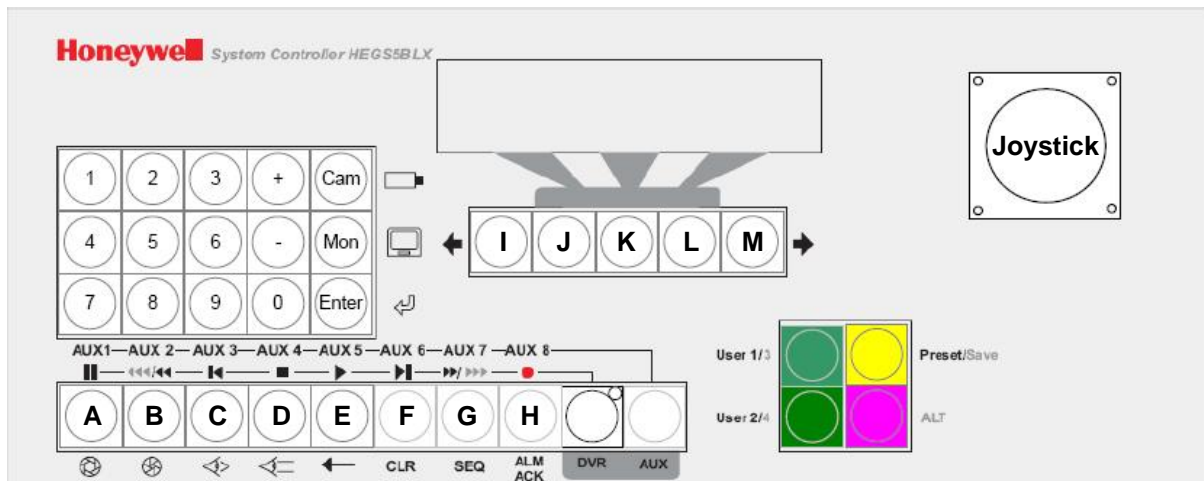
2. Configure Keyboard Control Address and Keyboard PTZ address as below figure.

- a. Push **Menu** button of DVR and enter the DVR setting menu.
- b. Move to **Miscellaneous** menu.
- c. Select **Keyboard Control Address** to 1.



HEGS5BLX Operation

To select “HNDR-S 4848”, press “DVR” button. Then press “1” + “Enter” buttons to select DVR number 1.



DVR Function Keys

Item	Function supported by Keyboard	Description <i>(The Keyboard should be in DVR mode for the below operation)</i>
1	Menu	Press “H”
2	Play	Press “B”
3	Rewind	Press “G”
4	Forward	AUX Mode LED on, Press “C”
5	Search	Press “C”
6	Sequence	Press “F”
7	Select	AUX Mode LED on, Press “E”
8	Multi-screen	AUX Mode LED on, Press “F”
9	Exit	AUX Mode LED on, Press “G”
10	Enter	AUX Mode LED on, Press “H”
11	Up	Hold down “ALT” + “Up”
12	Down	Hold down “ALT” + “Down”
13	Left	Hold down “ALT” + “Left”
14	Right	Hold down “ALT” + Right”
15	DVR channel select	I: Use to move between menu items
		J: Select DVR channel depending on the position
		K: Select DVR channel depending on the position
		L: Select DVR channel depending on the position
		M: Use to move between menu items

* Detail DVR operation procedure, please refer to the DVR manual.

Note: The information contained herein is subject to change without notice.

Free Manuals Download Website

<http://myh66.com>

<http://usermanuals.us>

<http://www.somanuals.com>

<http://www.4manuals.cc>

<http://www.manual-lib.com>

<http://www.404manual.com>

<http://www.luxmanual.com>

<http://aubethermostatmanual.com>

Golf course search by state

<http://golfingnear.com>

Email search by domain

<http://emailbydomain.com>

Auto manuals search

<http://auto.somanuals.com>

TV manuals search

<http://tv.somanuals.com>