

### INSTALLATION AND SETUP GUIDE

#### GENERAL INFORMATION

The ADEMCO 6150V and ADEMCO 6160V are addressable remote keypads designed for use with ADEMCO control panels and provide the following features:

- Backlit Display
- Programmable Function Keys
- Built-in Sounder
- Supervised by control panel (if supported)
- Voice Chime
- Voice Status
- Message Center

#### Notes:

- **When used with the ADEMCO VISTA-15P/VISTA-20P control panels, address 16 must be assigned to the first keypad. Additional keypads must be assigned to address 17 – 23. Refer to Setting The Keypad Options.**
- Keypad keys are continuously backlit for convenience.
- Permanent display backlighting is an option on some controls (refer to control panel's instructions for details).
- Voice Chime should only be enabled when used with control panels that support the "chime by zone" mode (e.g., VISTA-15P/VISTA-20P). This mode must be enabled at the control panel. Refer to the control panel's installation and setup guide for information on how to program the chime mode.
- **Use only zone descriptors supported by this keypad. If using zone descriptors not supported by this keypad, you must turn voice status and voice chime off. Table 1 is a list of applicable zone descriptors and index entries.** Refer to the control panel's installation and setup guide for information about how to program zone descriptors.
- For the 6160V ONLY, supervision must be enabled for commercial fire installations.

**UL NOTE:** ADEMCO 6150V cannot be used for commercial fire applications.

#### KEYPAD DISPLAYS AND LEDS

The keypads have the following display features:

Model	Fixed Word Display	2-Line Alpha Display	2-Digit Zone Identifier	Custom Zone Descriptors
6150V	X		X	
6160V		X		X


The following table identifies the keypad's LEDs and associated functions:

LED	Function
ARMED	Lights red when the system is armed in any mode.
READY	Lights green when the system is "ready" to be armed.
MESSAGE	Flashes red when message waiting or lights red (steady) when in record mode.

#### PROGRAMMABLE FUNCTION KEYS

The keypad's programmable function keys [A, B, C] are normally used for keypad panic functions, but they can be programmed for other special functions instead. If they are programmed for other special functions, the associated keypad key pairs still provide the respective panic alarm (if programmed). Refer to the control panel's Installation & Setup Guide for details.

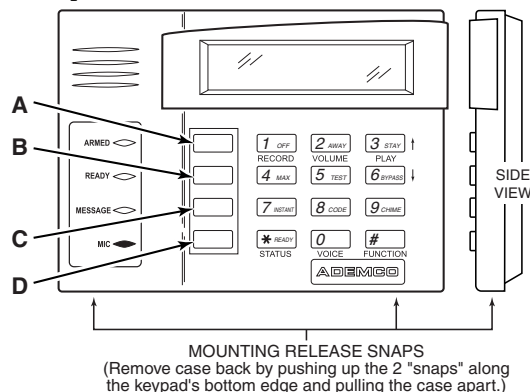
Function Keys	Equivalent Key Pairs
A	[1] and [*]
B	[*] and [#]
C	[3] and [#]
D	NONE



- **Function keys must be held down for at least 2 seconds to activate the programmed function.**
- **If functions other than panics are assigned to the programmable function keys, programmed panics must be initiated by pressing the programmed key pair.**

#### FUNCTION KEY LABELS

A set of adhesive-backed labels with some typical function symbols (i.e., fire, police, personal emergency, etc.) is provided. These labels can be placed on or next to the keys to identify each key's function for the end user (as determined by the capability and programming of the control panel; refer to the installation and setup guide for the control panel).



#### WIRING AND INSTALLATION

Keypads can be surface mounted using drywall anchors or to a single- or double-gang electrical box.

1. **Remove the case back** by pushing up the two "snaps" along the keypad's bottom edge and pulling the case apart. See diagram above.
2. **Route wiring from the control panel** through the opening in the case back.
3. **Mount the case back** to a wall or electrical box.
4. **Wire directly from the keypad's terminal block** to the terminal block on the control board. (See Wiring Table that follows.) Use only 16-24 AWG wire.

Wiring Table (All Keypads)

Keypad	Control Panel	Wire Color
G	Data In	Green
-	- Aux Pwr (GND)	Black
+	+ Aux. Pwr	Red
Y	Data Out	Yellow

5. **Re-attach the keypad** to the case back.
6. **Remove clear protective film from LEDs (6160V only).**

## SETTING THE KEYPAD OPTIONS

The procedures that follow are used to set the keypad address, voice chime mode, and additional voice keypad mode.

### Setting The Keypad Address



**When used with the VISTA-15P/VISTA-20P control panels, address 16 must be assigned to the first Keypad. Additional Keypads must be set at 17 - 23 and must be enabled additionally in control programming (fields \*190 - \*196).**

The keypad can either be set for an address of 00-30 or for non-addressable mode (31). The default keypad address is 31. For valid address settings for your keypad, refer to the control panel's Installation & Setup Guide.

#### Note:

- If unable to enter the address mode, power down, power up, and try again.
  - If 10 seconds pass with no key entry, the keypad automatically exits the address mode. You must power down, power up, and start the address mode again.
  - The keypad will not enter the address mode if the control panel is in programming mode.
1. Apply power to the keypad.
  2. Within 60 seconds of applying power to the keypad, press and hold down the [1] key and [3] key at the same time for 3 seconds. The current keypad address will be displayed.
  3. Press "00".  
The current address is cleared.
  4. Enter desired keypad address.
  5. Press [\*] to save the displayed address and enter the Voice Chime mode. "VOICE CHIME" (alpha keypad) or "C" (fixed keypad) is displayed along with the selected mode "1" or "0".

### Setting The Voice Chime Mode

6. Press [1] to set the Voice Chime mode on or press [0] to set the Voice Chime mode off.
7. Press [\*] to save the displayed Voice Chime mode and enter the Additional Console voice keypad mode.

"ADDITIONAL CON" (alpha keypad) or "A" (fixed keypad) is displayed along with the selected mode "1" or "0".

**Note:** Setting Voice Chime mode off does not effect the voice status or alarm annunciation.

### Setting The Additional Console Mode

The Additional Console mode must be set for all voice keypads being used.

8. Set the voice keypad Additional Console mode as follows:
  - a. On the Primary voice keypad, press [0] to set the Additional Console mode to NO.
  - b. On any secondary voice keypads, press [1] to set Additional Console mode to YES.

9. Press [\*] to save the mode.

### VIEWING THE KEYPAD ADDRESS

Press and hold down the [1] key and [3] key at the same time for about 3 seconds. The current address is displayed. No key entry is allowed. Press any key to exit or wait 10 seconds to exit the viewing mode.

### OPERATING THE KEYPAD

For operating instructions, see the User Guide for the control panel used with this keypad.

### SPECIFICATIONS

#### Physical:

6150V: 4-7/8"H x 6-1/4"W x 1"D  
6160V: 5-5/16"H x 7-3/8"W x 1-3/16"D

#### Displays:

6150V: Fixed-Word LCD (backlit)  
6160V: 2 x 16 Alpha-Numeric Super twist LCD (backlit)

**Sounder:** Speaker

#### Electrical:

Voltage: +12VDC (power-limited)  
Current:  
6150V: 160mA (ARMED LED lit, LCD backlight and sounder on) reduces to 60mA when panel is operating in standby mode (backlight off).  
6160V: 190mA (ARMED LED lit, LCD backlight and sounder on) reduces to 60mA when panel is operating in standby mode (backlight off).

NFPA72 Compliant.

**TABLE 1. ZONE DESCRIPTORS AND INDEX ENTRIES**

ALARM	002	DOOR	057	KITCHEN	105	PATIO	146	UPSTAIRS	207
ATTIC	009	EMERGENCY	067	LAUNDRY	106	POLICE	151	UTILITY	208
BABY	012	EXIT	071	LIBRARY	109	POOL	152	WINDOW	217
BACK	013	FIRE	079	LIVING	113	ROOM	162	YARD	223
BASEMENT	016	FLOOR	080	MAIN	122	SHED	168	ZONE	225
BATHROOM	017	FRONT	085	MASTER	123	SHOP	170	1ST	228
BEDROOM	019	GARAGE	089	MEDICAL	125	SIDE	173	2ND	230
CLOSED	040	GUN	094	MOTION	131	SLIDING	175	3RD	232
DEN	050	HALL	095	OFFICE	136	SMOKE	176		
DETECTOR	052	HOUSE	099	OPEN	138	STORAGE	185		
DINING	053	INSIDE	101	PANIC	144	SUPERVISED	190		

REFER TO THE INSTALLATION INSTRUCTIONS FOR THE CONTROL PANEL WITH WHICH THIS DEVICE IS USED FOR WARRANTY INFORMATION AND LIMITATIONS OF THE ENTIRE ALARM SYSTEM.

For the latest warranty information, please go to:  
<http://www.security.honeywell.com/hsc/resources/wa/index.html>

**Honeywell**

2 Corporate Center Drive, Suite 100, P.O. Box 9040, Melville, NY 11747  
Copyright © 2009 Honeywell International Inc.  
[www.security.honeywell.com](http://www.security.honeywell.com)



K0022V3 3/09 Rev. A

## Free Manuals Download Website

<http://myh66.com>

<http://usermanuals.us>

<http://www.somanuals.com>

<http://www.4manuals.cc>

<http://www.manual-lib.com>

<http://www.404manual.com>

<http://www.luxmanual.com>

<http://aubethermostatmanual.com>

Golf course search by state

<http://golfingnear.com>

Email search by domain

<http://emailbydomain.com>

Auto manuals search

<http://auto.somanuals.com>

TV manuals search

<http://tv.somanuals.com>