



Reliability is a
beautiful thing™

HOSHIZAKI® **SELF-CONTAINED FLAKER**

MODEL

F-500BAF/-C

PARTS LIST



NUMBER: 71127
ISSUED: March 15, 1999
REVISED: September 19, 2005

CONTENTS

Auxiliary Codes.....	3
Note About Ordering Parts	3
Material Abbreviations	4
A. Ice Flaker Assembly	5
F-500BAF/-C	5
B. Evaporator Assembly	16
F-500BAF	16
F-500BAF-C	19
C. Refrigeration Circuit	22
F-500BAF/-C	22
D. Water Circuit Assembly	24
F-500BAF/-C	24
E. Control Box Assembly	27
F-500BAF/-C	27
F. Cover Assembly - Bin Top	31
F-500BAF/-C	31
G. Sliding Door	33
F-500BAF/-C	33
H. Label Location.....	34
F-500BAF/-C	34
J. Spout Assembly	37
F-500BAF/-C	37
K. Accessories & Packaging.....	38
F-500BAF/-C	38

Auxiliary Codes

F-500BAF	H-0	September 1998
	J-0	December 1998
	J-1	August 1999
	K-0	January 2000
	K-1	April 2000
	L-0	March 2001
	M-0	January 2002
	M-1	October 2002
	N-0	December 2002
	P-0	December 2003
	P-1	June 2004
Q-0	December 2004	

F-500BAF-C	H-0	September 1998
	J-0	December 1998
	J-1	August 1999
	M-0	2002
	M-1	2002
	N-0	2003
	P-0	December 2003
	P-1	June 2004
	Q-0	December 2004

Note About Ordering Parts

Most assemblies cannot be ordered as complete units; parts in the assemblies generally must be ordered separately.

Material Abbreviations

ALUMINUM

AL = Aluminum

COPPER

CU = Copper

PLASTIC

ABS = Acrylonitrile -butadiene - styrene
AC = Polyacetal
EVA = Ethylene vinyl acetate
PA = Polyamide = Nylon
PC = Polycarbonate
PE = Polyethylene
PES = Polyester
PETP = Polyethylene terephthalate = Tetlon
PP = Polypropylene
PS = Polystyrene
PTFE = Polytetrafluoroethylene = Teflon
PUR = Polyurethane
PVC = Polyvinyl chloride

RUBBER

VN = Vinyl Nitrile
EPDM = EP rubber
NBR = Nitrile butadiene rubber
NR = Natural rubber
NP = Neoprene
SI.R = Silicone rubber
SY.R = Synthetic rubber
EPH = Epichlorohydrin

STEEL

GS = Galvanized steel
SS = Stainless steel
PS = Plated steel
PAS = Primed steel

AUXILIARY CODE

K-0

TT Designates the year. "K" indicates the year 2000. Years progress or regress in alphabetical order.
"J" is 1999, "L" is 2001, "M" is 2002, and so on. The letters "I" and "O" were skipped.
Designates significant part changes within the same year for this model. Base is 0 and this number advances for each change.

Example: P-1

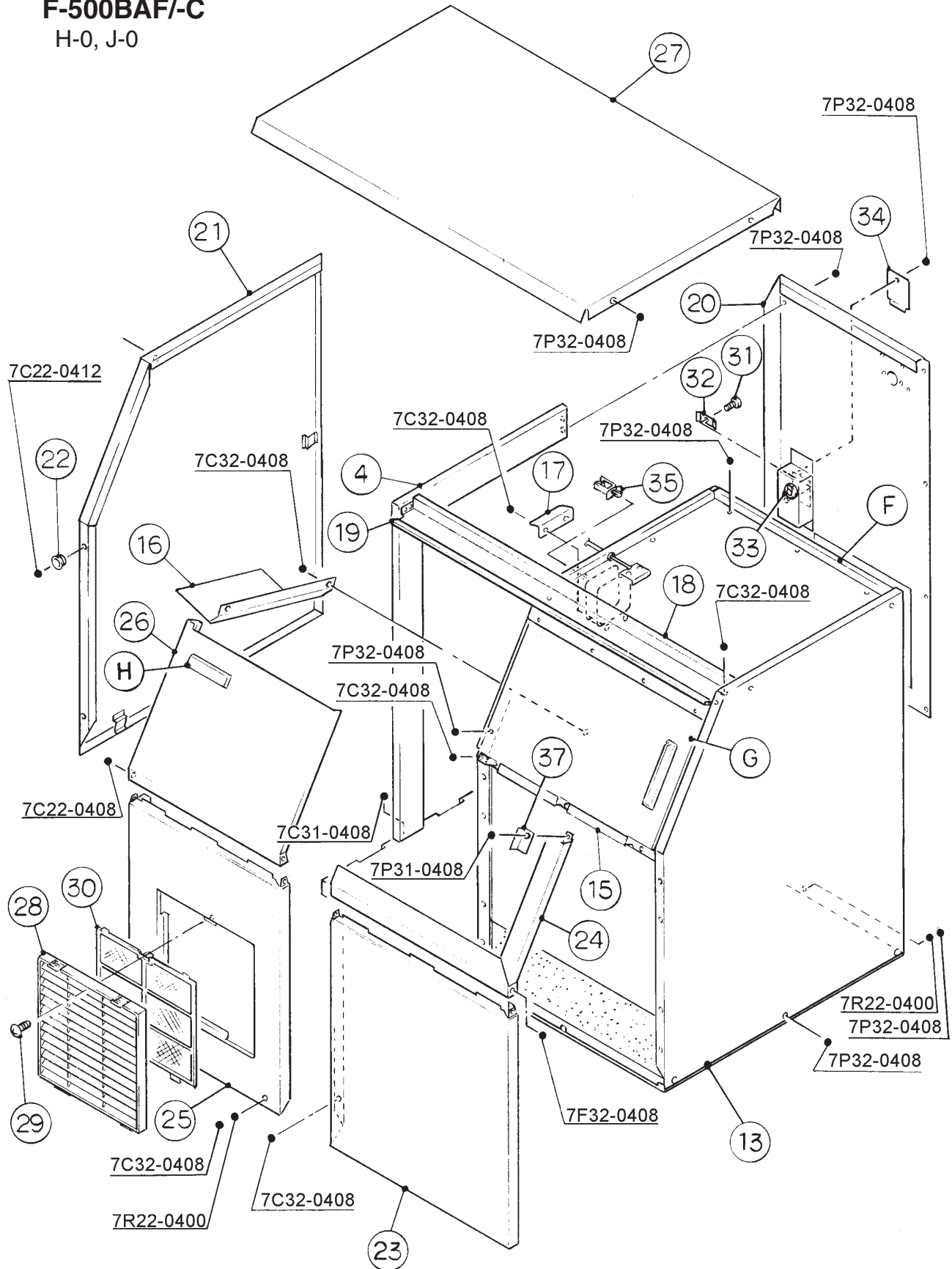
TT "P" indicates 2004.
"1" indicates the first significant part change for 2004.

A. Ice Flaker Assembly

1/2

F-500BAF/-C

H-0, J-0

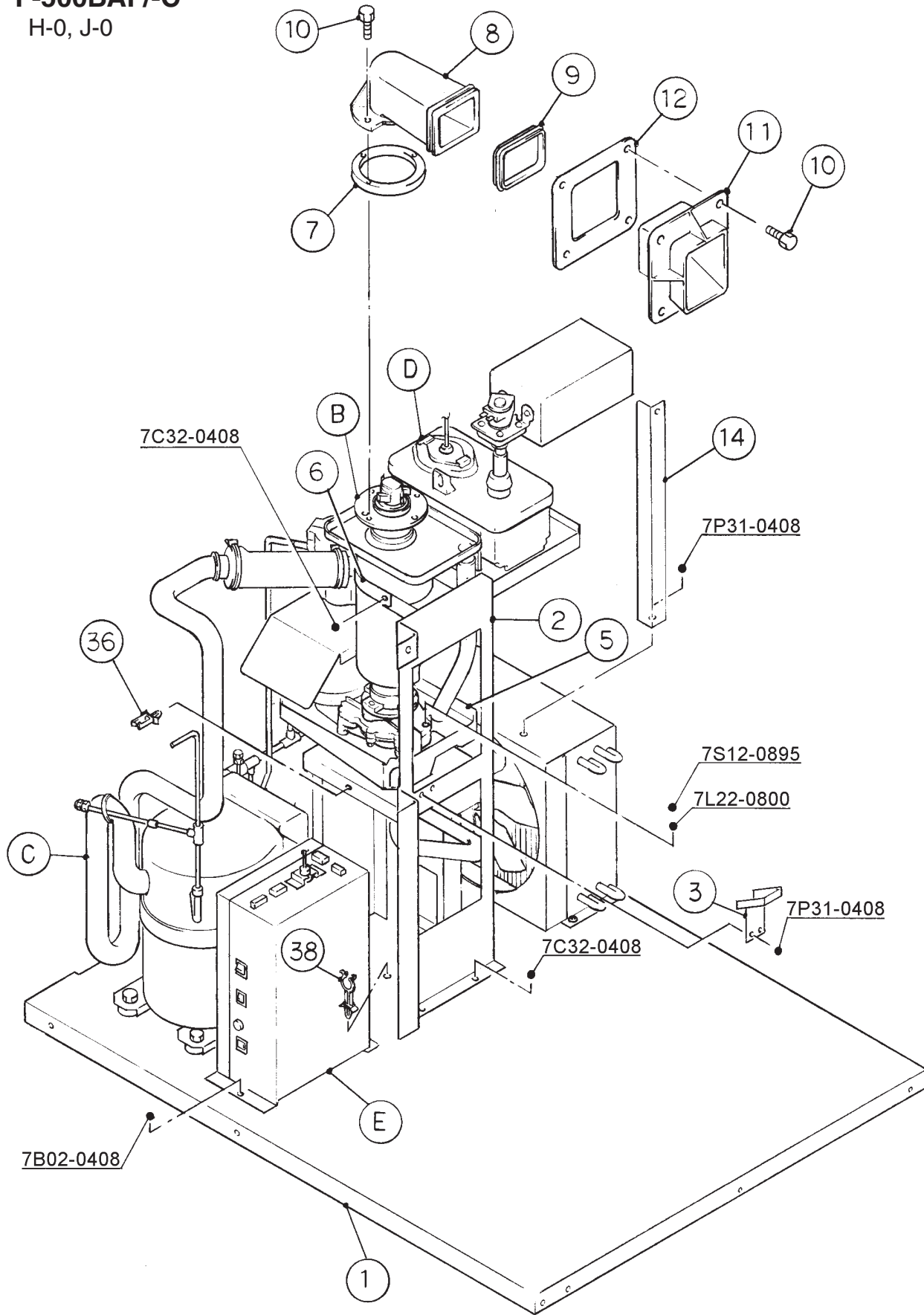


A. Ice Flaker Assembly

2/2

F-500BAF/-C

H-0, J-0

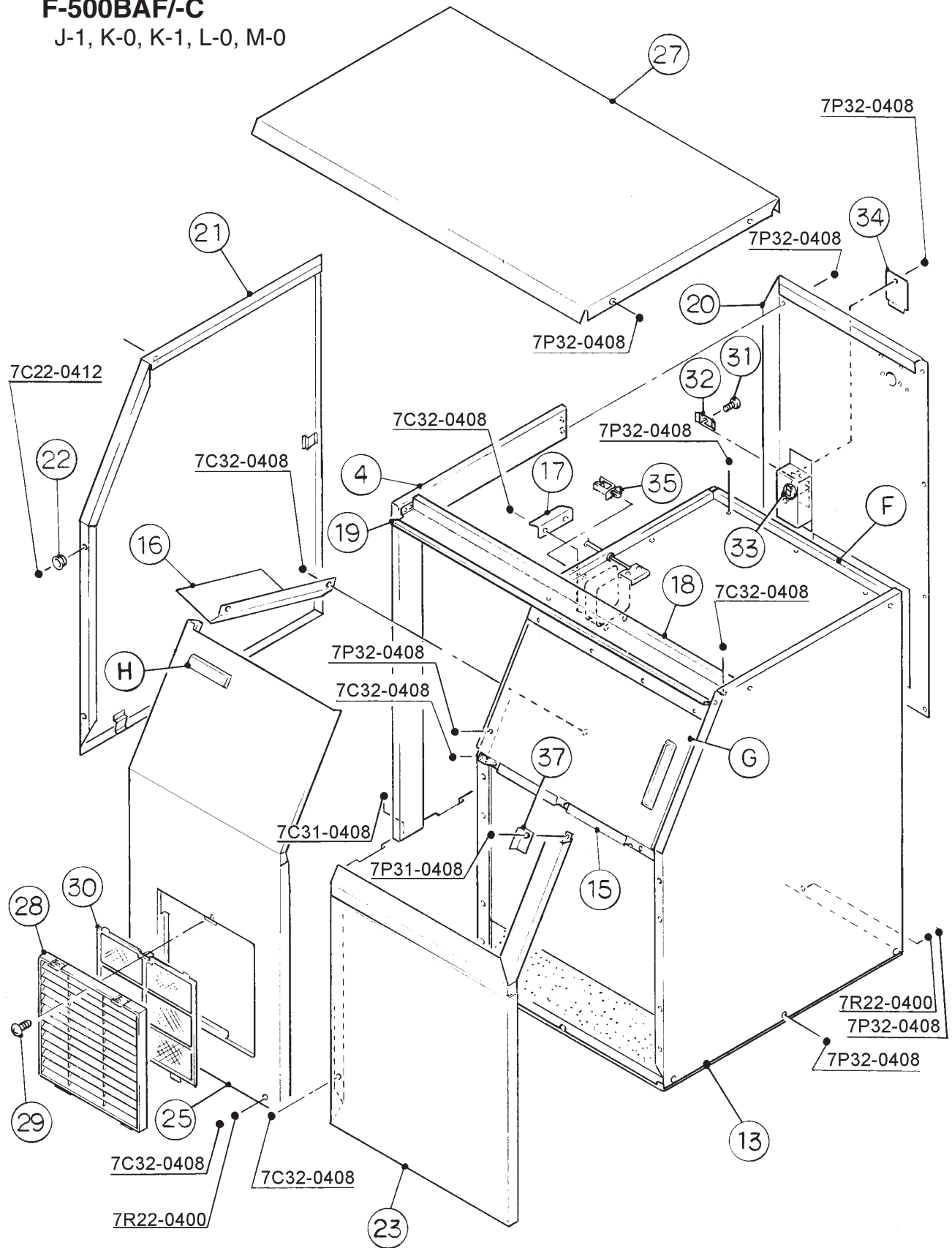


A. Ice Flaker Assembly

1/2

F-500BAF/-C

J-1, K-0, K-1, L-0, M-0

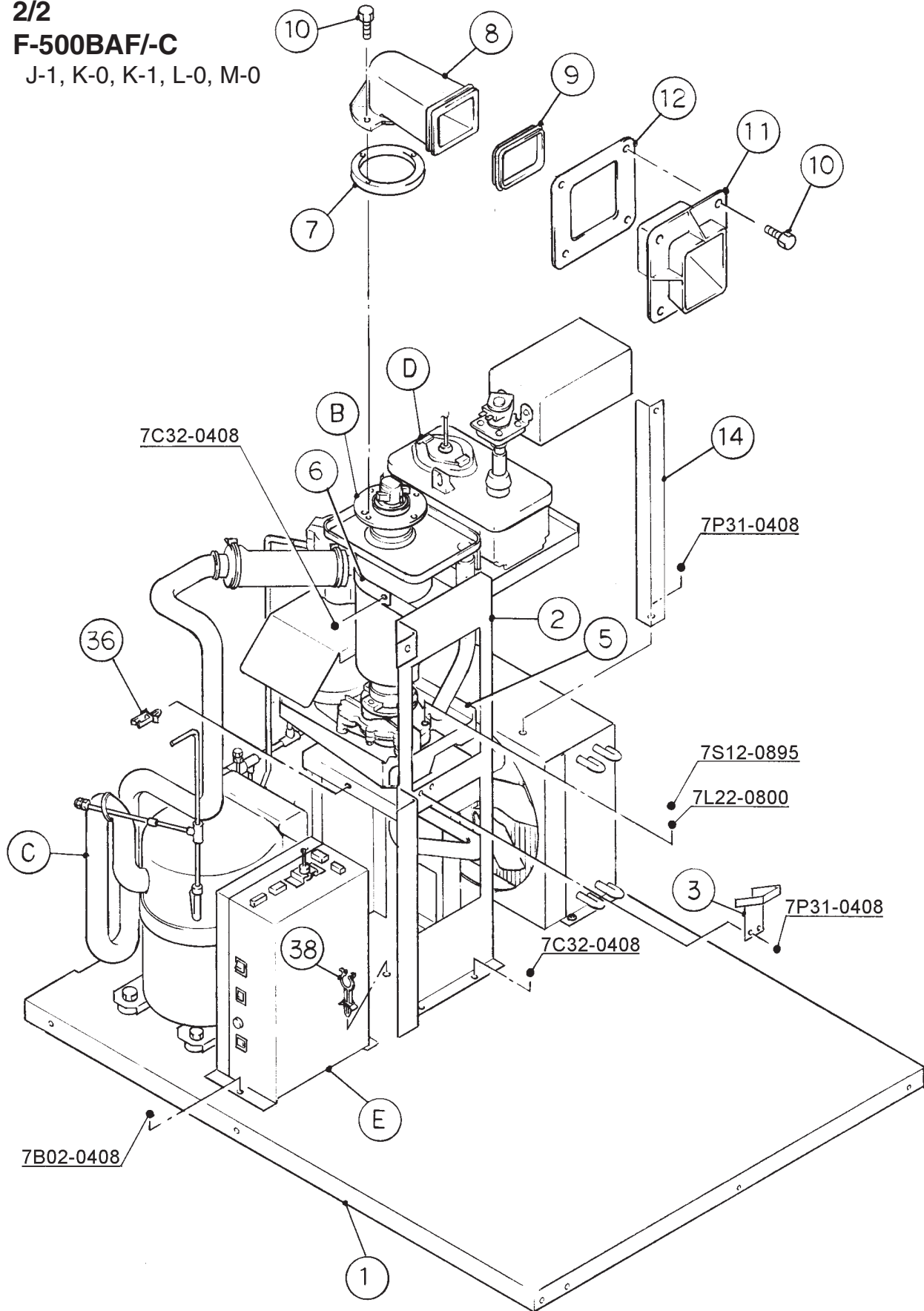


A. Ice Flaker Assembly

2/2

F-500BAF/-C

J-1, K-0, K-1, L-0, M-0

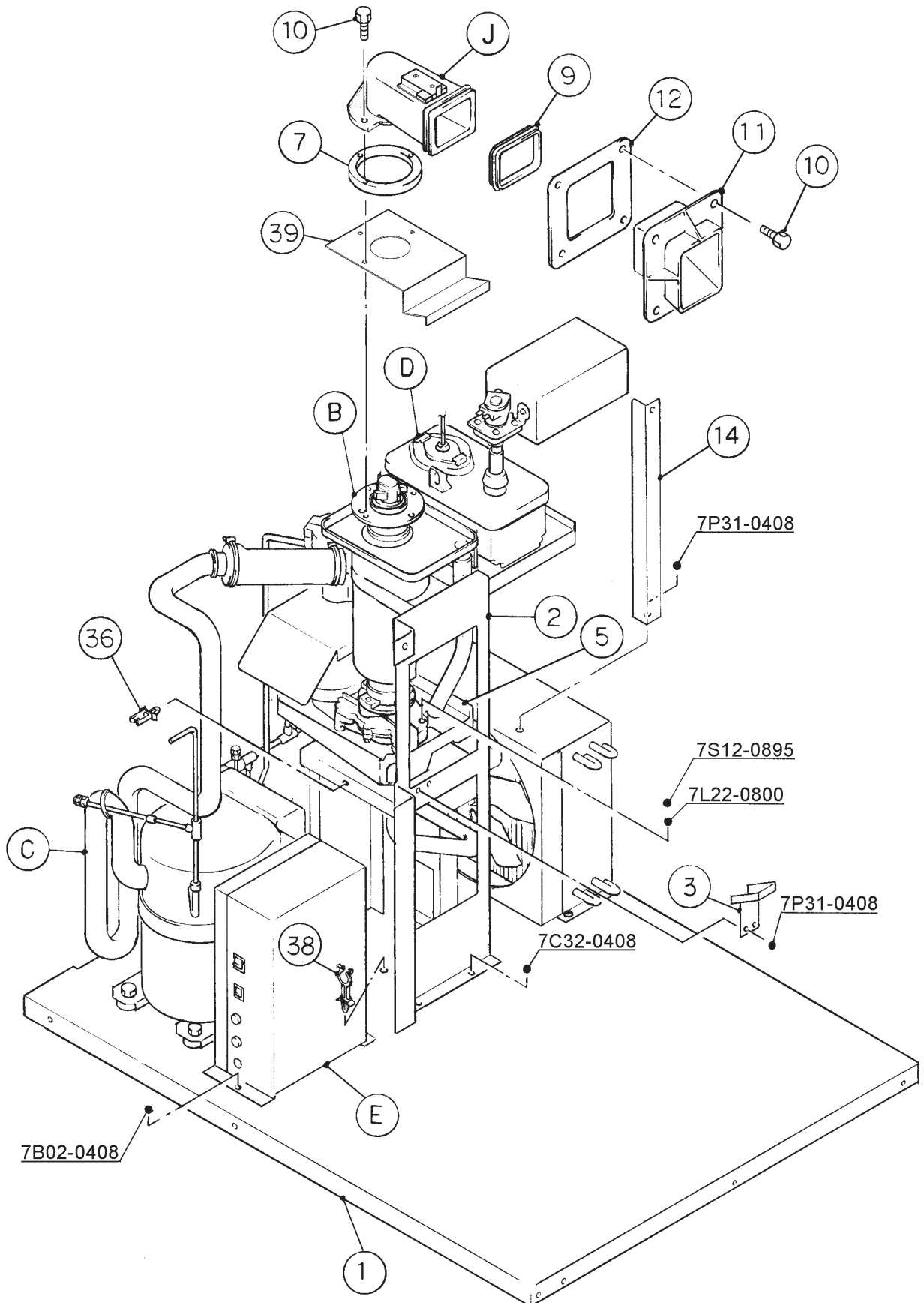


A. Ice Flaker Assembly

2/2

F-500BAF/-C

M-1, N-0, P-0, P-1

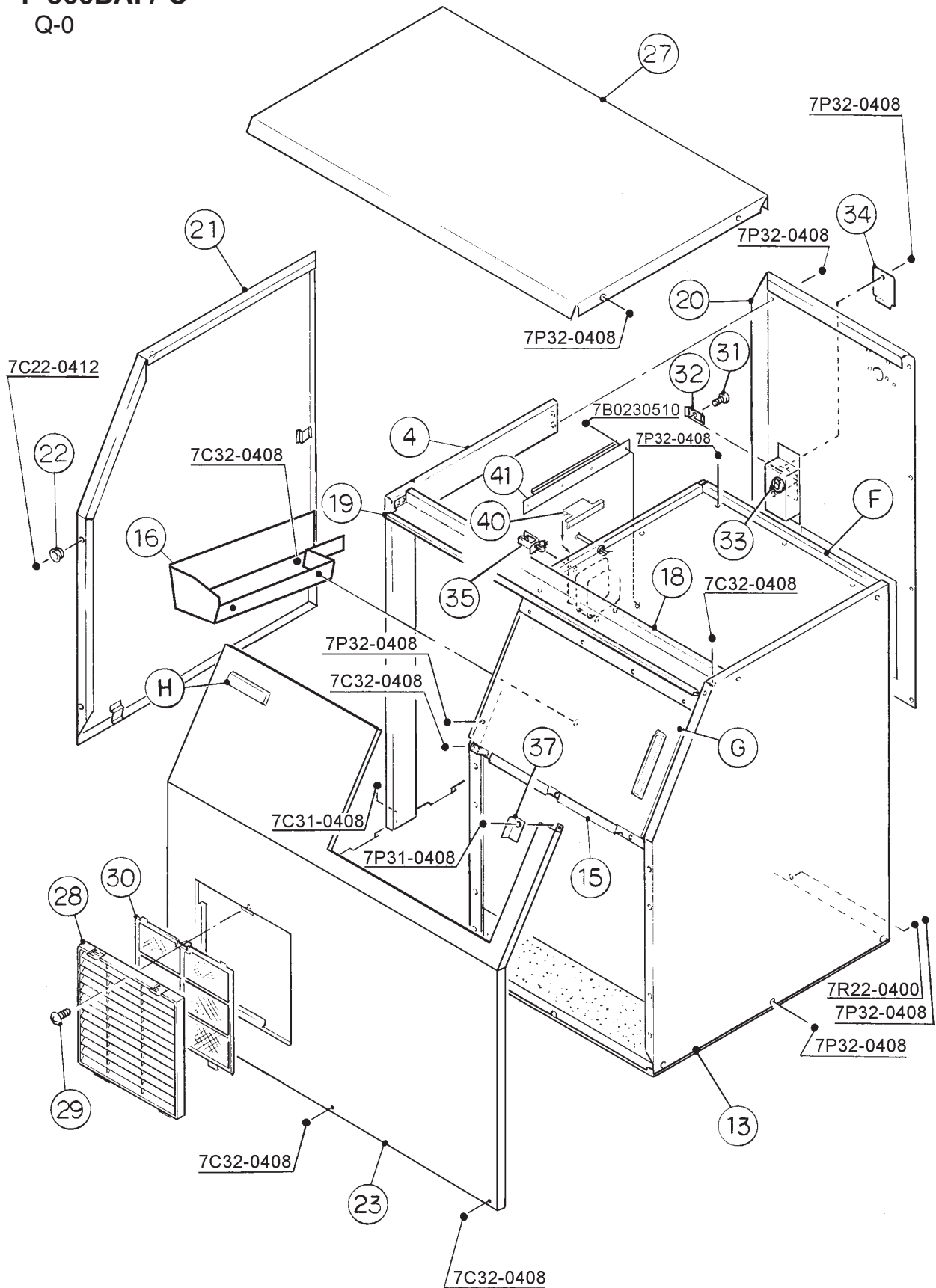


A. Ice Flaker Assembly

1/2

F-500BAF/-C

Q-0

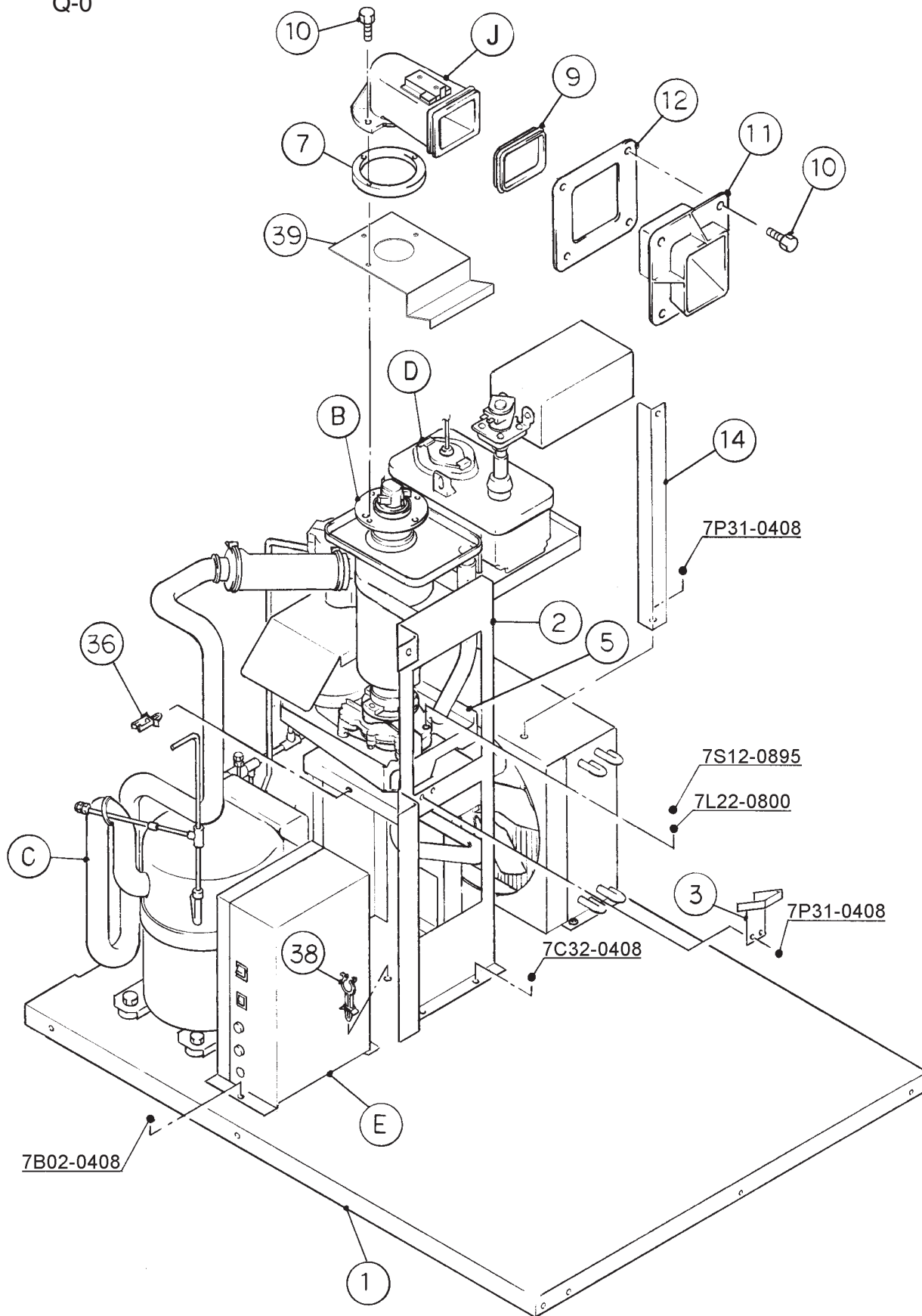


A. Ice Flaker Assembly

2/2

F-500BAF/-C

Q-0



Title: A. Ice Flaker Assembly Model: F-500BAF-C												
Index No.	Description	Material or Model Number	Part Number	Required Number								
				H-0 J-0	J-1 K-0	K-1 to M-0	M-1	N-0 P-0	P-1	Q-0		
B	Evaporator Assembly	F-500BAF	339852A01	1	1	1	1	1	1	1		
		F-500BAF-C	339852A02	1	1	1	1	1	1	1		
	Socket Head Hex Bolt	8x95, SS	7S12-0895	3	3	3	3	3	3	3		
	Spring Washer	M8, SS	7L22-0800	3	3	3	3	3	3	3		
C	Refrigeration Circuit	-	108682A01	1	1	1	1	1	1	1		
D	Water Circuit Assembly	-	108683A01	1	1	1	1	1	1	1		
E	Control Box Assembly	-	227131A01	1	1	1	-					
			2A2486A01				1	1	1	1		
	Hex Head Bolt	4x8, SS	7B02-0408	1	1	1	1	1	1	1		
F	Cover Assy - Bin Top	-	339855A01	1	1	-						
			3A1526A01			1	1	1	1	1		
	T2 Screw	4x8, SS	7P32-0408	7	7	7	7	7	7	7		
G	Sliding Door	-	339858A01	1	1	1	1	1	1	1		
H	Label Location	F-500BAF	227138A01	1	1	1	-					
			227138A03				1	1	1	1		
		F-500BAF-C	227138A02	1	1	1	-					
		227138A04					1	1	1	1		
J	Spout Assembly	-	2A2511A01	See #8 below			1	1	1	1		
1	Base	GS	108681G01	1	1	1	1	1	1	-		
			1A1009G01								1	
2	Frame (C)	GS	227127G01	1	1	-						
			2A1948G01			1	-					
			2A1948G02				1	1	1	1		
	Truss Head Screw	4x8, SS	7C32-0408	7	7	7	7	7	7	7		
3	Deflector (C)	SS	453661G01	1	1	1	1	1	1	1		
			T2 Screw	4x8	7P31-0408	2	2	2	2	2	2	2
4	Side Frame (L)	GS	227141G01	1	1	1	1	1	1	1		
			Truss Head Screw	4x8	7C31-0408	4	4	4	4	4	4	4
5	Drain Pan	-	323765G01	1	1	1	1	1	1	1		
6	Strap	GS	453662-01	1	1	1	-					
			Truss Head Screw	4x8, SS	7C32-0408	2	2	2	-			
7	Packing	EPDM	427151-01	1	1	1	1	1	1	1		
8	Spout	-	227129-01	1	1	1	See Assy J					
9	Spout Packing (A)	EPDM	453663-01	1	1	1	1	1	1	1		
10	Thumbscrew	SS, ABS	415949G03	7	7	7	5	5	-			
			415949G11						5	5		
11	Spout (B)	ABS	227130-01	1	1	1	-					
			-	232654-01				1	1	1	1	
12	Spout Packing (B)	EPDM	453664-01	1	11	1	-					
			-	4A2769-01				1	1	1	1	
13	Bin - Foamed	-	108684G01	1	1	1	-					
			108684G02					1	1	1	1	
	T2 Screw	4x8	7P31-0408	1	1	1	1	1	1	1		
	Tooth Washer	M4, SS	7R22-0400	1	1	1	1	1	1	1		
	T2 Screw	4x8, SS	7P32-0408	5	5	5	5	5	5	5		

Title: **A. Ice Flaker Assembly** Model: **F-500BAF/-C**

Index No.	Description	Material or Model Number	Part Number	Required Number										
				H-0 J-0	J-1 K-0	K-1 to M-0	M-1	N-0 P-0	P-1	Q-0				
14	Frame - Water Tank	GS	453665-01	1	1	1	-							
			4A2994-01				1	1	1	1				
	T2 Screw	4x8	7P31-0408	2	2	2	2	2	2	2	2			
15	Deflector (A)	SS	339853-01	1	1	1	1	1	1	1	-			
			3A3499-01								1			
	Truss Head Screw	4x8, SS	7C32-0408	3	3	3	3	3	3	3	3			
16	Deflector (B)	SS	227137-01	1	1	1	1	-						
			4A2964G01					1	1	1				
	Truss Head Screw	4x8, SS	7C32-0408	2	2	2	2	2	2	2	2			
17	Deflector (D)	SS	453666-01	1	1	1	-							
	Truss Head Screw	4x8, SS	7C32-0408	2	2	2	-							
18	Frame	SS	339856-01	1	1	1	1	1	1	1	1			
	Truss Head Screw	4x8, SS	7C32-0408	4	4	4	4	4	4	4	4			
19	Edging	CE-010-S, L=900	425931-05	1	1	1	1	1	1	1	1			
20	Rear Panel	GS	339857G01	1	1	1	1	1	1	1	1			
	T2 Screw	4x8, SS	7P32-0408	5	5	5	5	5	5	5	5			
21	Side Panel (L)	GS	227132G01	1	-									
		SS	2A1607G01		1	1	1	1	1	1	1			
22	Screw Collar	-	4H0171-01	6	4	4	4	4	4	4	2			
	Flat Head Screw	4x12, SS	7C22-0412	6	4	4	4	4	4	4	2			
23	Front Panel (R) - Low	GS	227133-01	1	-									
	Front Panel (R)	SS	2A1620G01		1	1	1	1	1	1	-			
	Front Panel		1A1056-01								1			
	Truss Head Screw	4x8, SS	7C32-0408	1	1	1	1	1	1	1	3			
24	Front Panel (R) - Up	SS	227134G01	1	-									
	FT Screw	4x8, SS	7F32-0408	2	-									
25	Front Panel (L) - Low	GS	227135-01	1	-									
	Front Panel (L)	SS	1A0472G01		1	1	1	1	1	1	-			
	Truss Head Screw	4x8, SS	7C32-0408	2	2	2	2	2	2	2	-			
	Tooth Washer	M4, SS	7R22-0400	1	1	1	1	1	1	1	-			
26	Front Panel (L) - Up	SS	339933G01	1	-									
	Flat Head Screw	4x8, SS	7C22-0408	2	-									
27	Top Panel	SS	339872G01	1	1	1	1	1	1	1	-			
			3A3495G01									1		
	T2 Screw	4x8, SS	7P32-0408	4	4	4	4	4	4	4	4			
28	Louver (B)	PP	103121-03	1	1	1	1	1	1	1	1			
29	Tapping Screw - Black	STEEL,4x8	433954-01	1	1	1	1	1	1	1	1			
30	Air Filter (B)	PP	208283G03	1	1	1	1	1	1	1	1			
31	Screw - Grounding	5x8	433304-02	1	1	1	1	1	1	1	1			
32	Washer	-	433537-02	1	1	1	1	1	1	1	1			
33	Bushing	SR-34-2	420472-05	1	1	1	1	1	1	1	1			
34	Junction Box Cover	GS	433410-01	1	1	1	1	1	1	1	1			
	T2 Screw	4x8, SS	7P32-0408	1	1	1	1	1	1	1	1			
35	Wire Saddle	VWS4238-C	4A0338-02	2	2	2	2	2	2	2	2			
36	Wire Saddle	VWS42105-C	4A0338-04	2	2	2	2	2	2	2	2			

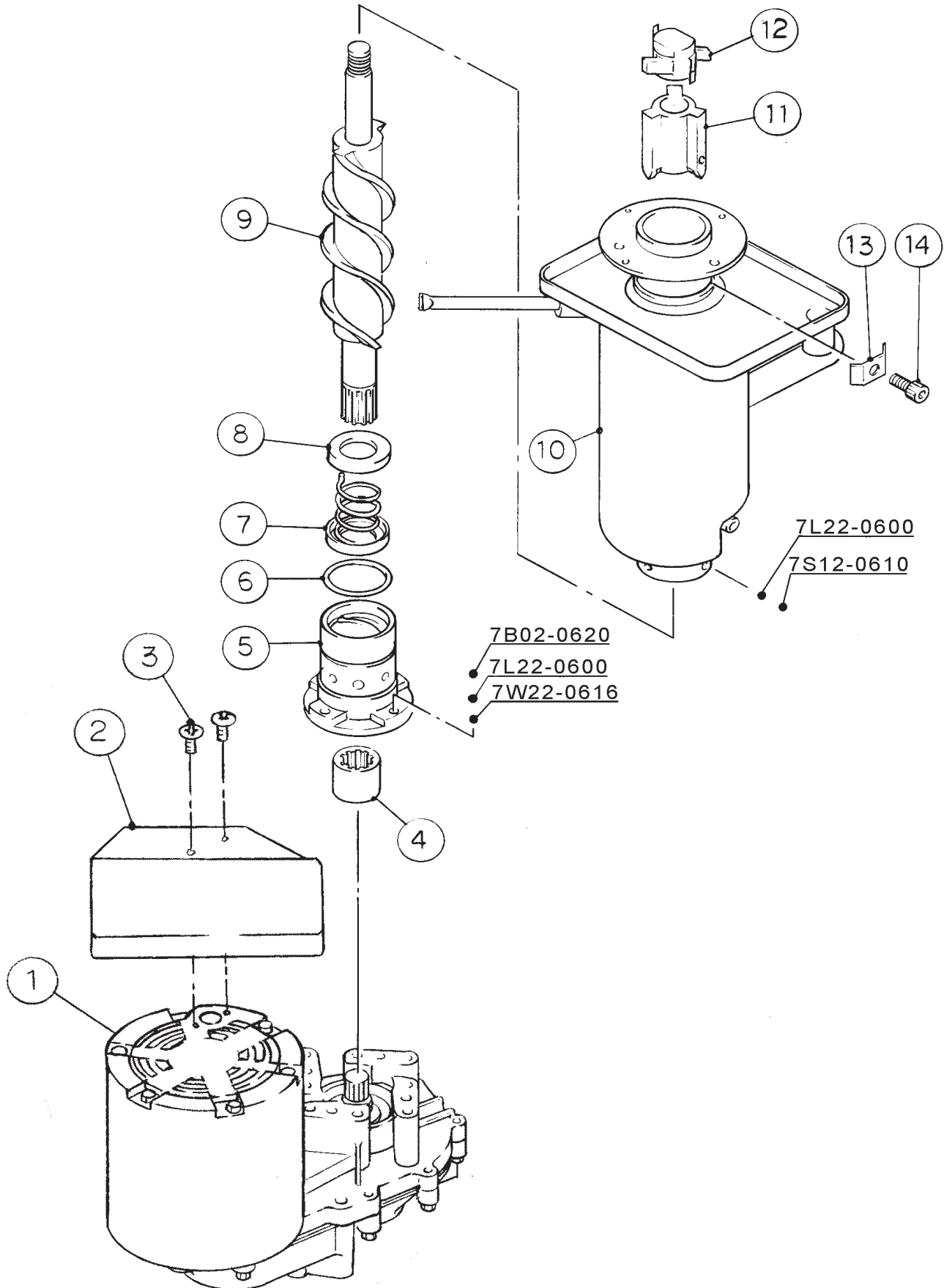
Title: **A. Ice Flaker Assembly** Model: **F-500BAF/-C**

Index No.	Description	Material or Model Number	Part Number	Required Number								
				H-0 J-0	J-1 K-0	K-1 to M-0	M-1	N-0 P-0	P-1	Q-0		
37	Stopper	SS	453670-01	1	1	1	1	1	1	1		
	T2 Screw	4x8	7P31-0408	1	1	1	1	1	1	1		
38	Clamp	WS50-25-C	4A0337-01	1	1	1	1	1	1	1		
39	Bracket – Evap (A)	-	4A2754-01				1	1	1	1		
40	Bracket – Evap (B)	-	4A2755-01				1	1	1	1		
41	Bracket – Evap (C)	-	3A2310-01				1	1	1	1		
	Hex Head Bolt w/Washer (LF)	5x10, SS	7B0230510				4	4	4	4		

B. Evaporator Assembly

F-500BAF

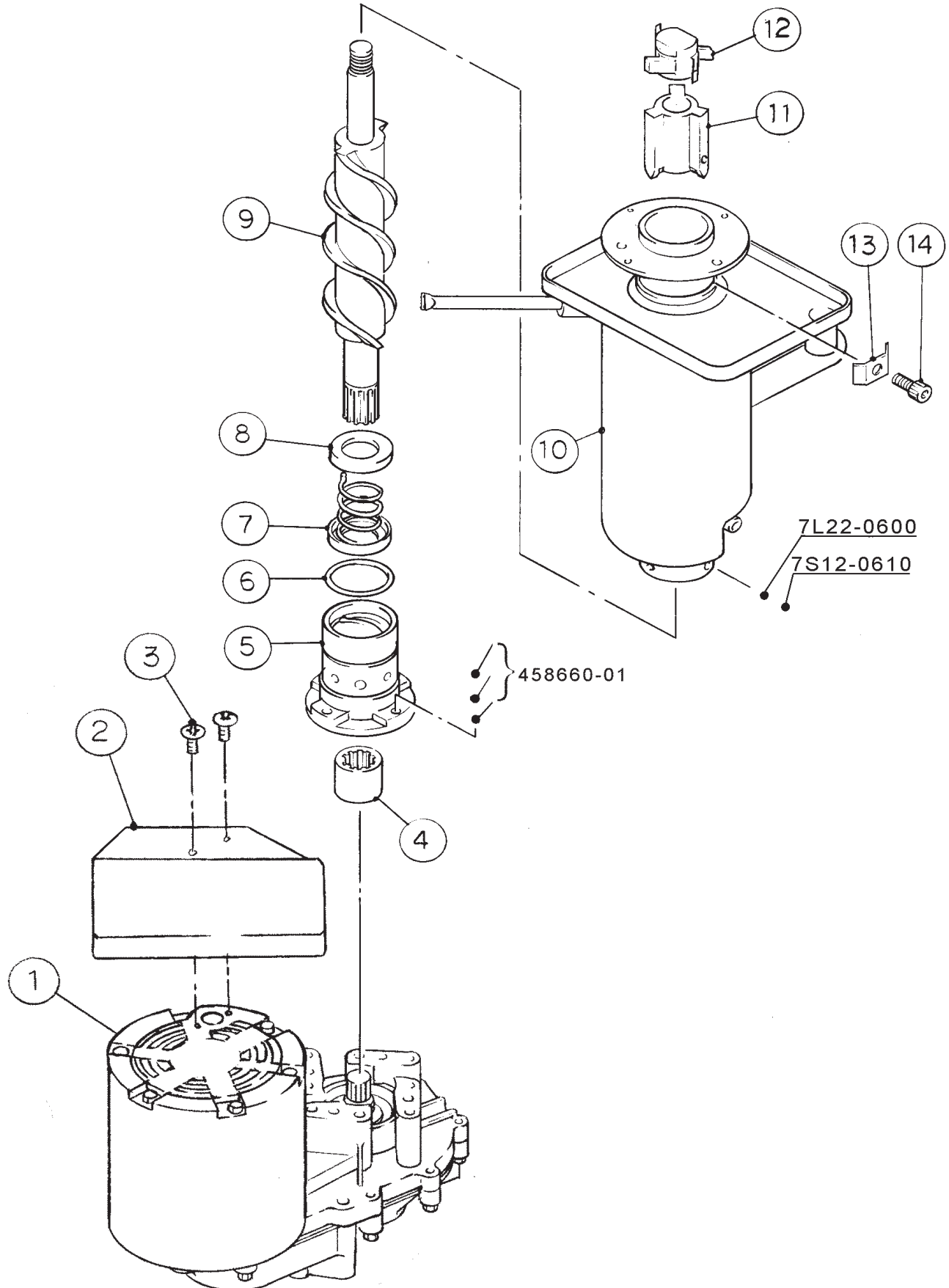
H-0, J-0, J-1, K-0, K-1



B. Evaporator Assembly

F-500BAF

L-0, M-0, M-1, N-0, P-0, P-1, Q-0

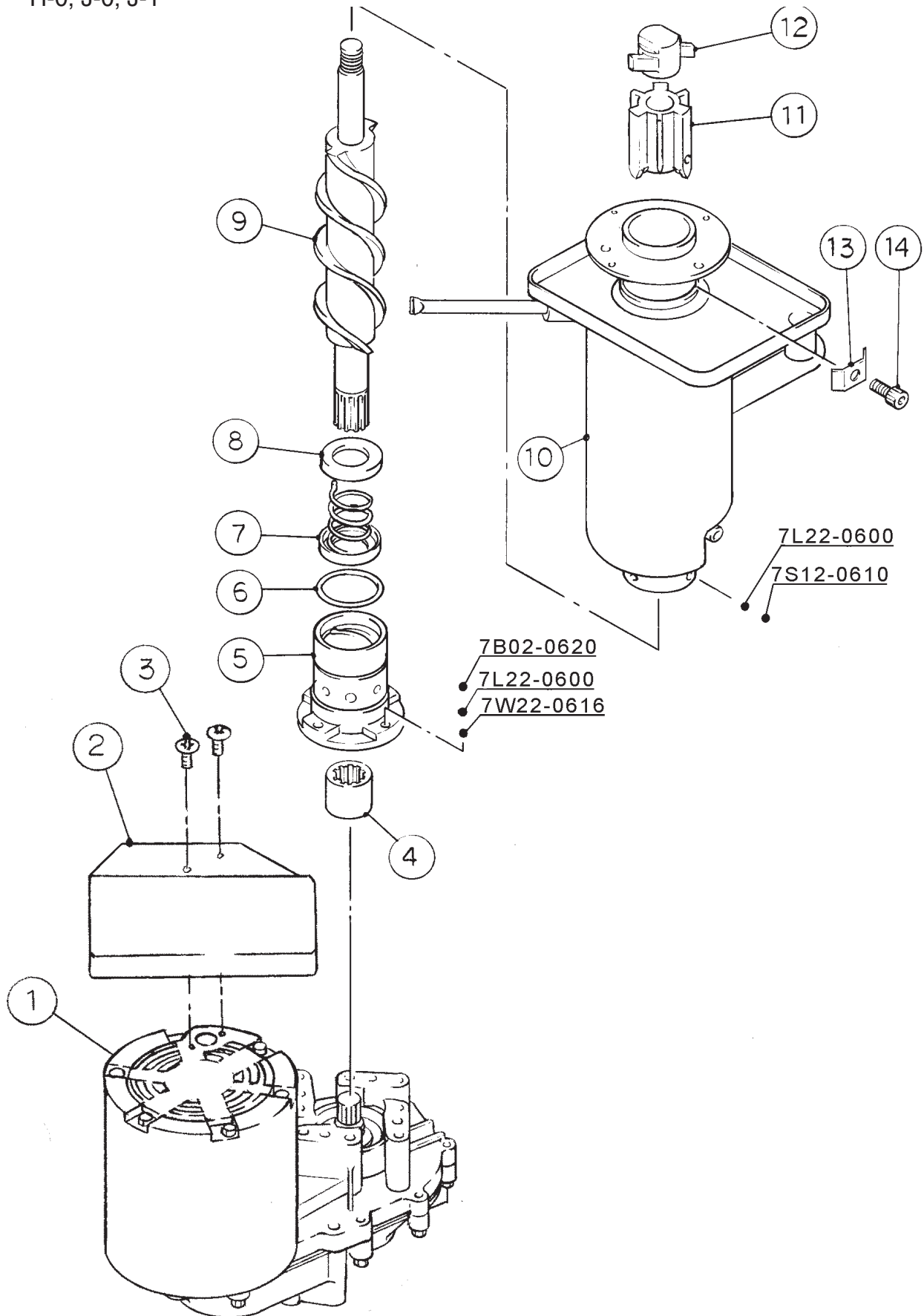


Title: B. Evaporator Assembly Model: F-500BAF												
Index No.	Description	Material or Model Number	Part Number	Required Number								
				H-0 to K-0	K-1 to P-1	Q-0						
1	Gear Motor	-	4A0897-02	1	-							
			4A2193-01		1	1						
	Hex Bolt	GOLD STAINLESS 6x20	7B02-0620	4	-							
	Bolt	6x20	458660-01		4	4						
	Plain Washer	SS, Ø6.4 × Ø12.5 × t 1.6	7W22-0616	4	-							
	Spring Washer	SS, 6	7L22-0600	4	-							
2	Barrier - Gear Motor	GS	3A1312-01	1	1	1						
3	FT Screw	4x8, SS	7F32-0408	2	2	2						
4	Coupling - Spline	SS	418316-01	1	1	1						
5	Housing	-	206013G03	1	1	1						
6	"O" Ring	G40	7616-G040	1	1	1						
7	Mechanical Seal	HK9A-MS 22	432491-01	1	1	1						
8	Ring (B)	SS	432494-01	1	1	1						
9	Auger	SS	341448G01	1	1	1						
10	Evaporator	-	340076G01	1	-							
			2A1699G01		1	-						
			2A3310G01			1						
	Socket Head Cap Screw	6x10, SS	7S12-0610	4	4	4						
	Split Lock Washer	M6, SS	7L22-0600	4	4	4						
11	Extruding Head - 45F	SS	340077G01	1	1	1						
12	Cutter	SS	453790-01	1	1	1						
13	Washer	SS	453791-01	3	3	3						
14	Socket Head Cap Screw	SS, M8x14	429121-01	3	3	3						

B. Evaporator Assembly

F-500BAF-C

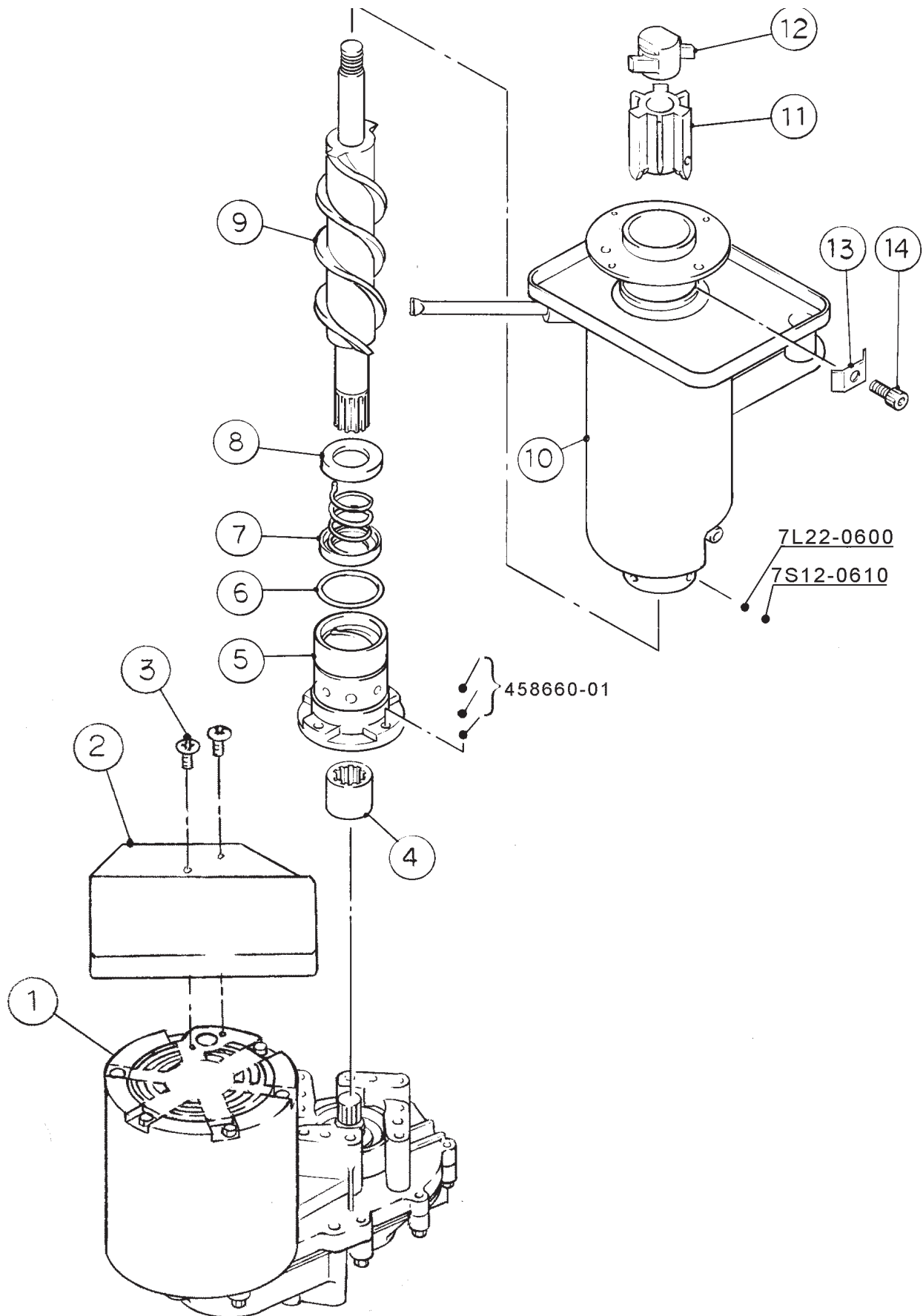
H-0, J-0, J-1



B. Evaporator Assembly

F-500BAF-C

M-0, M-1, N-0, P-0, P-1, Q-0

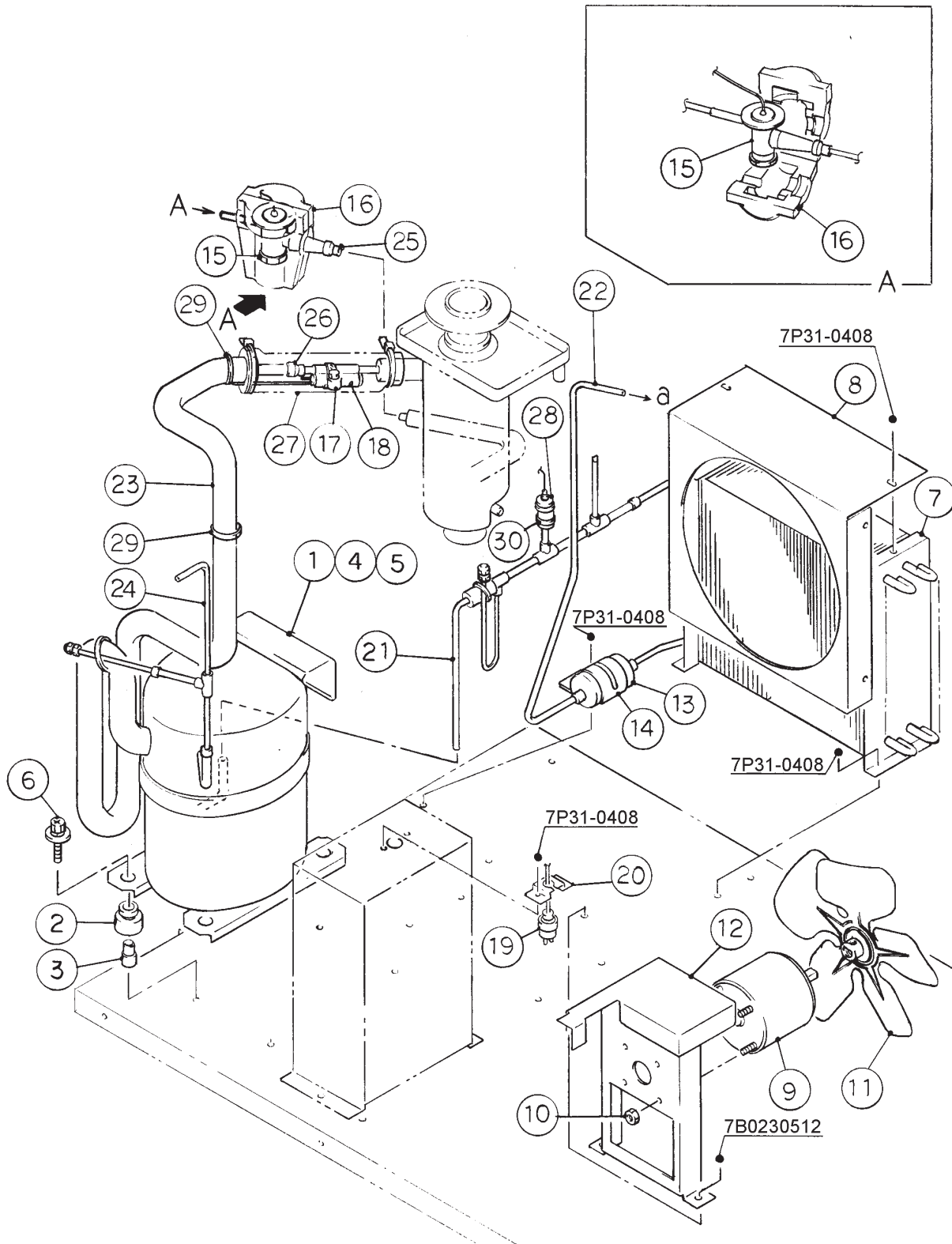


Title: B. Evaporator Assembly Model: F-500BAF-C											
Index No.	Description	Material or Model Number	Part Number	Required Number							
				H-0 to J-1	M-0 to P-1	Q-0					
1	Gear Motor	-	4A0897-02	1	-						
			4A2193-01		1	1					
	Hex Bolt	GOLD STAIN-LESS, 6x20	7B02-0620	4	-						
	Bolt	6x20	458660-01		4	4					
	Plain Washer	SS, Ø6.4 x Ø12.5 x t 1.6	7W22-0616	4	-						
	Spring Washer	SS, 6	7L22-0600	4	-						
2	Barrier - Gear Motor	GS	3A1312-01	1	1	1					
3	FT Screw	4x8, SS	7F32-0408	2	2	2					
4	Coupling - Spline	SS	418316-01	1	1	1					
5	Housing	-	206013G03	1	1	1					
6	"O" Ring	G40	7616-G040	1	1	1					
7	Mechanical Seal	HK9A-MS 22	432491-01	1	1	1					
8	Ring (B)	SS	432494-01	1	1	1					
9	Auger	SS	341448G01	1	1	1					
10	Evaporator	-	340076G01	1	-						
			2A1699G01		1	-					
			2A3310G01			1					
	Socket Head Cap Screw	6x10, SS	7S12-0610	4	4	4					
	Split Lock Washer	M6, SS	7L22-0600	4	4	4					
11	Extruding Head – 45N	SS	327141G01	1	1	1					
12	Cutter	SS	440905-01	1	1	1					
13	Washer	SS	453791-01	3	3	3					
14	Socket Head Cap Screw	SS, M8x14	429121-01	3	3	3					

C. Refrigeration Circuit

F-500BAF/-C

H-0, J-0, J-1, K-0, K-1, L-0, M-0, M-1, N-0, P-0, P-1, Q-0



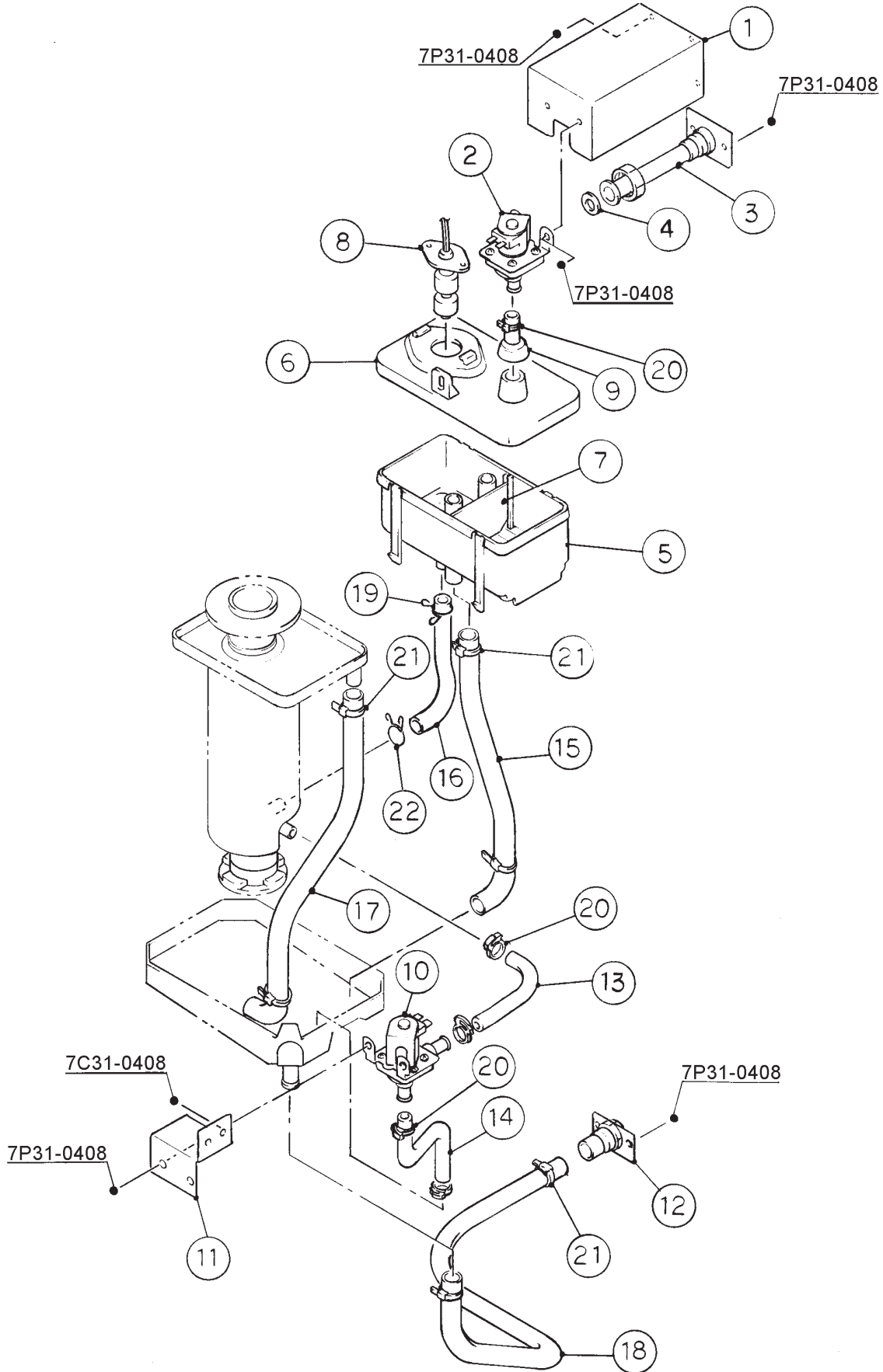
Title: **C. Refrigeration Circuit** Model: **F-500BAF-C**

Index No.	Description	Material or Model Number	Part Number	Required Number																
				H-0 to Q-0																
1	Compressor	-	4A2300-01	1																
2	Grommet	027-0073-00	434403-01	4																
3	Spacer	027-0072-02	434404-01	4																
4	Protector	071-0370-30	4A1805-01	1																
5	Protector Holder	SS	437339-01	1																
6	Bolt	L=45	437889-01	4																
7	Condenser	-	227142-01	1																
	Pan Head Screw w/Washer (SW)	4x8, SS	7C1230408	3																
8	Shroud	GS	339859-01	1																
9	Fan Motor	U90B1 7190-1031	440911-01	1																
10	Self Locking Nut	-	7N2110832	4																
11	Fan Blade	AD10CW32	444898-01	1																
12	Bracket - Fan Motor	GS	3A0828-01	1																
	Hex Head Bolt w/Washer (LF)	SS, 5x12	7B0230512	4																
13	Drier	A-TCH 032S	4A1113-01	1																
14	Drier Bracket	GS	445847-01	1																
	Truss Head Screw	4x8	7C31-0408	1																
15	Expansion Valve	ANISC	4A1117-01	1																
16	Expansion Valve Cover	-	4A1168-01	1																
17	Clamp	SS	443461-01	1																
18	Holder - Expansion Valve - 3/8	-	3A0107-01	1																
19	Pressure Switch	ACB-2UB04	433441-05	1																
20	Press. Switch Bracket	GS	434938-01	1																
	T2 Screw	4x8	7P31-0408	1																
21	Copper Tube (A) - High Side	COPPER	339870G01	1																
22	Copper Tube (B) - High Side	COPPER	339869-01	1																
23	Copper Tube (A) - Low Side	COPPER	227144G01	1																
24	Copper Tube (B) - Low Side	COPPER	453676G01	1																
25	Reducer	Ø12.7xØ9.52	420915-06	1																
26	Reducer	Ø12.7xØ9.52	421904-01	1																
27	Insulation Tube	L=160	7762-2943	1																
28	Insulation Tube	L=30	7762-0717	2																
29	Cable Tie	CV-150	7720-0003	7																
30	Cable Tie	CV-100	7720-0002	3																

D. Water Circuit Assembly

F-500BAF/-C

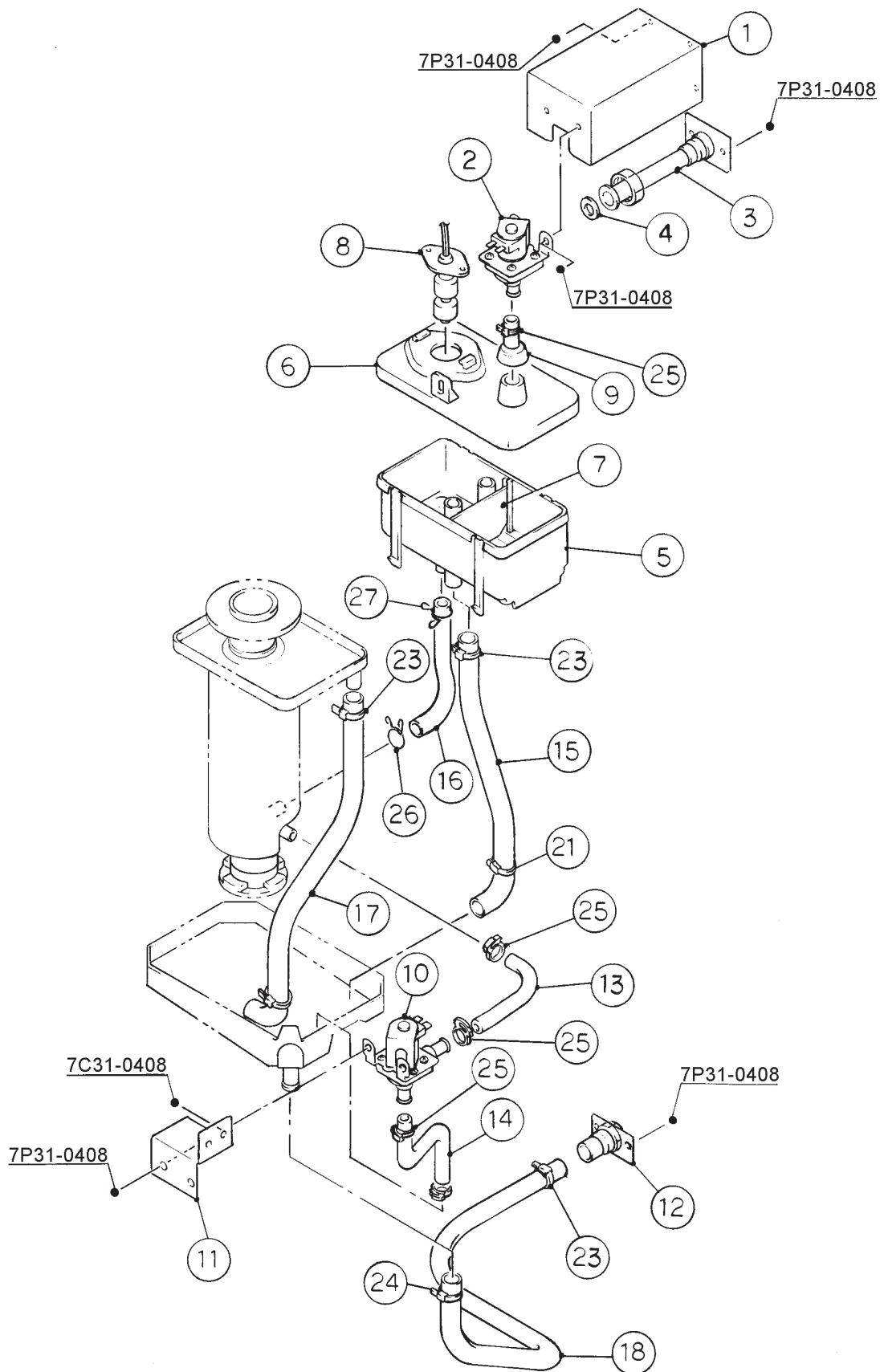
H-0, J-0



D. Water Circuit Assembly

F-500BAF/-C

J-1, K-0, K-1, L-0, M-0, M-1, N-0, P-0, P-1, Q-0



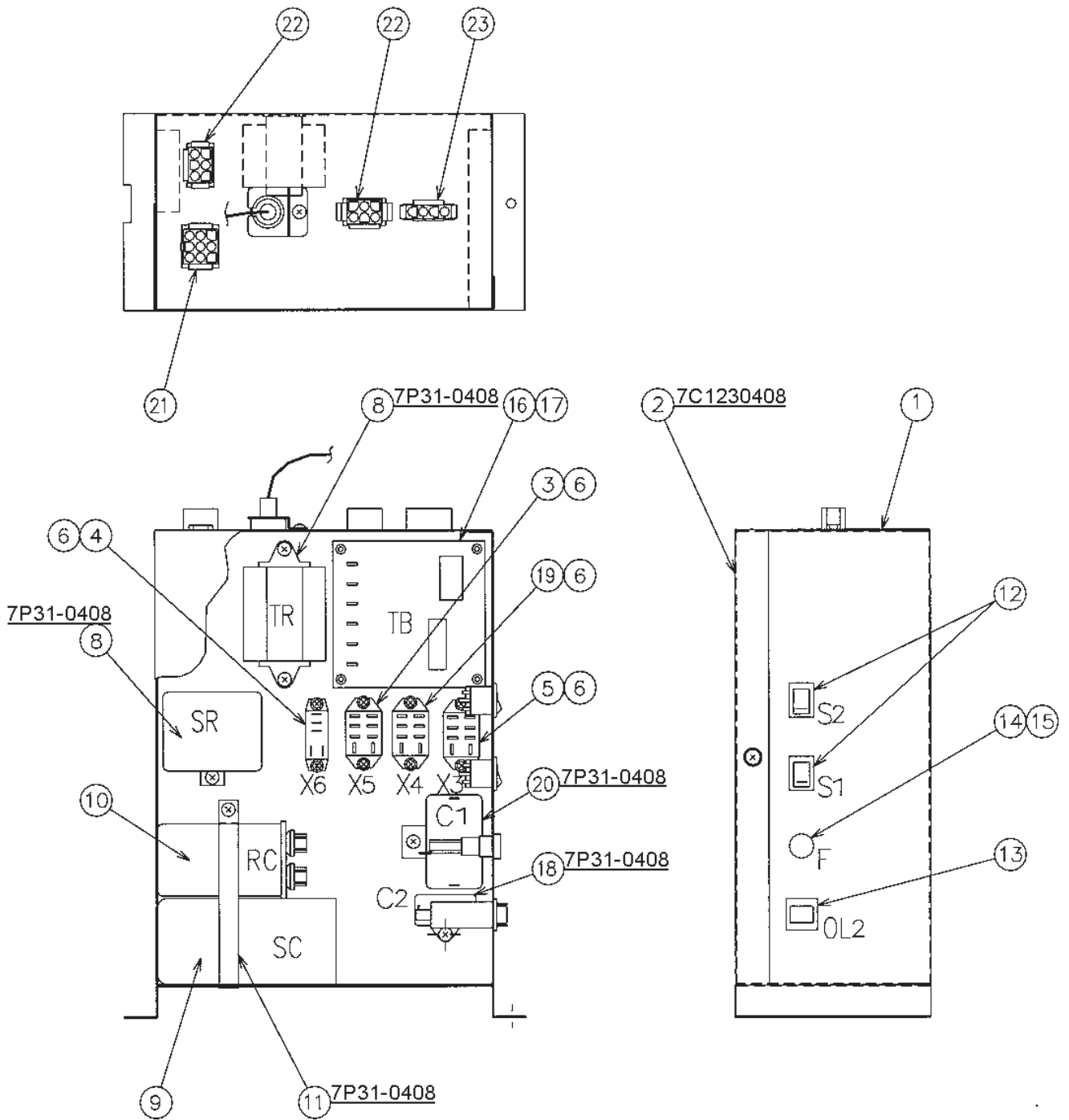
Title: **D. Water Circuit Assembly** Model: **F-500BAF/C**

Index No.	Description	Material or Model Number	Part Number	Required Number									
				H-0 J-0	J-1	K-0 K-1	L-0 to Q-0						
1	Water Valve Bracket	GS	3A0553-01	1	1	1	1						
	T2 Screw	4x8	7P31-0408	3	3	3	3						
2	Water Valve	S-30	4A0865-01	1	1	1	1						
	T2 Screw	4x8	7P31-0408	2	2	2	2						
3	Water Supply Pipe	-	4A0891G01	1	1	1	1						
	T2 Screw	4x8	7P31-0408	2	2	2	2						
4	Washer		4A0867-01	1	1	1	1						
5	Reservoir	-	2A0753-01	1	1	1	1						
6	Reservoir Cover	-	214810-01	1	1	1	1						
7	Separator - Reservoir	-	4A1255-01	1	1	1	1						
8	Float Switch	TW-1221-101	435490-01	1	1	1	1						
9	Inlet - Reservoir	-	4A0869-01	1	1	1	1						
10	Water Valve	S-60N	4A0866-01	1	1	-							
		-	4A2077-01			1	-						
		-	4A2772-01				1						
	T2 Screw	4x8	7P31-0408	2	2	2	2						
11	Cover - Water Valve	GS	453667-01	1	1	1	1						
	Truss Head Screw	4x8	7C31-0408	2	2	2	2						
12	Fitting	-	4A0776G01	1	1	1	1						
	T2 Screw	4x8	7P31-0408	2	2	2	2						
13	Silicone Hose	L=160	7730-0912	1	1	-							
		L=160	7730I3896			1	1						
14	Silicone Hose	L=200	7730-0912	1	1	-							
		L=190	7716-0913			1	1						
15	Silicone Hose	L=290	7730-1822	1	1	1	1						
16	Reservoir Hose	-	4A1165-02	1	1	1	1						
17	Vinyl Hose	L=360	7725-1923	1	1	1	1						
18	Vinyl Hose	L=715	7725-1923	1	1	1	1						
19	Clamp	SK-18.3	435934-06	1	-								
20	Clamp	MH-30N	421642-04	4	-								
21	Cable Tie	CV-150	7920-0003	7	2	2	2						
22	Clamp	SK-14	435934-02	1	-								
23	Hose Clamp	-	4A2017-01		3	3	3						
24	Hose Clamp	-	4A2017-02		1	1	1						
25	Hose Clamp	-	4A2017-04		4	-							
			4A2017-08			4	4						
26	Hose Clamp	-	4A2017-05		1	1	1						
27	Hose Clamp	-	4A2017-06		1	1	1						

E. Control Box Assembly

F-500BAF/-C

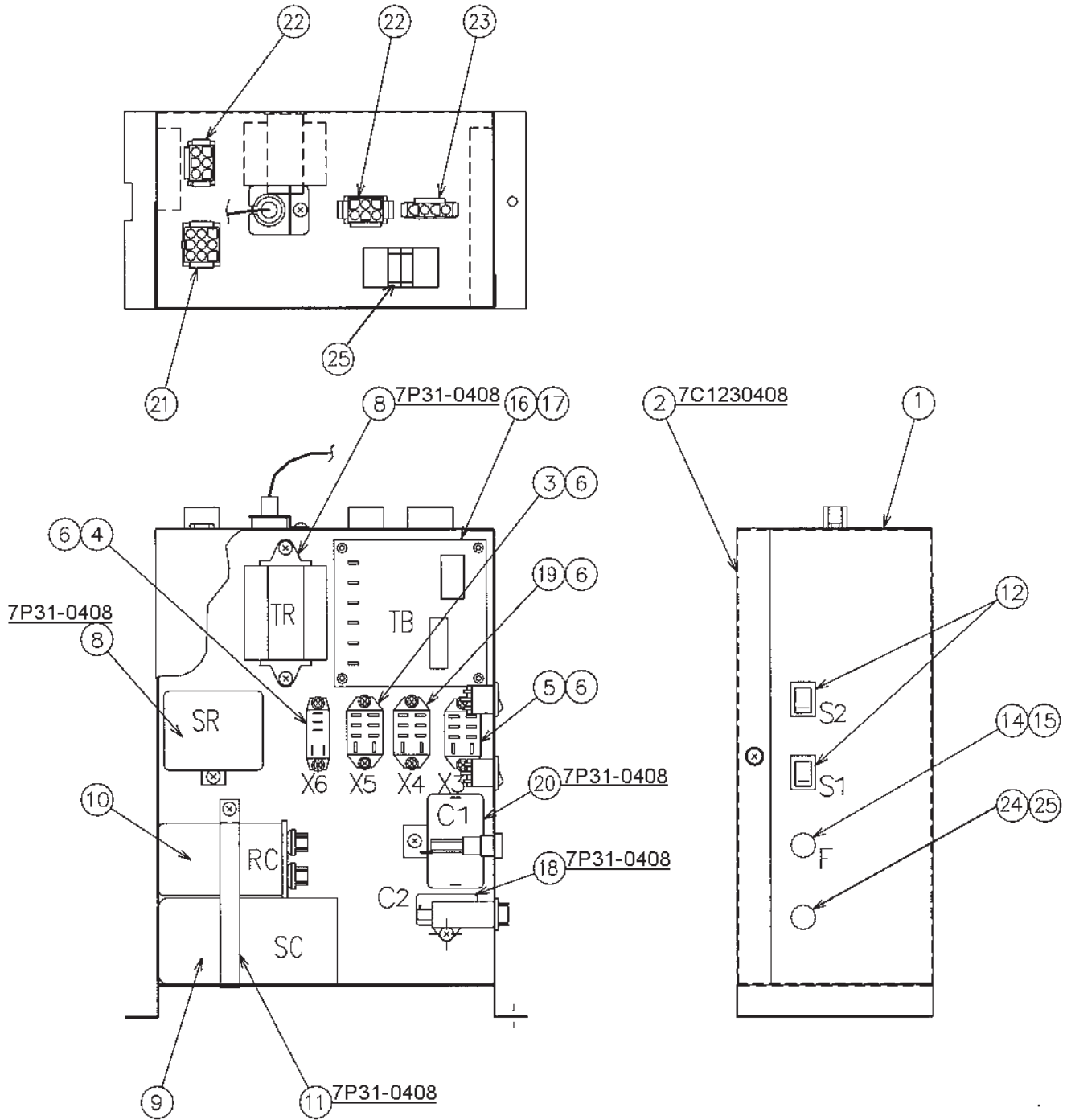
H-0, J-0, J-1, K-0



E. Control Box Assembly

F-500BAF/-C

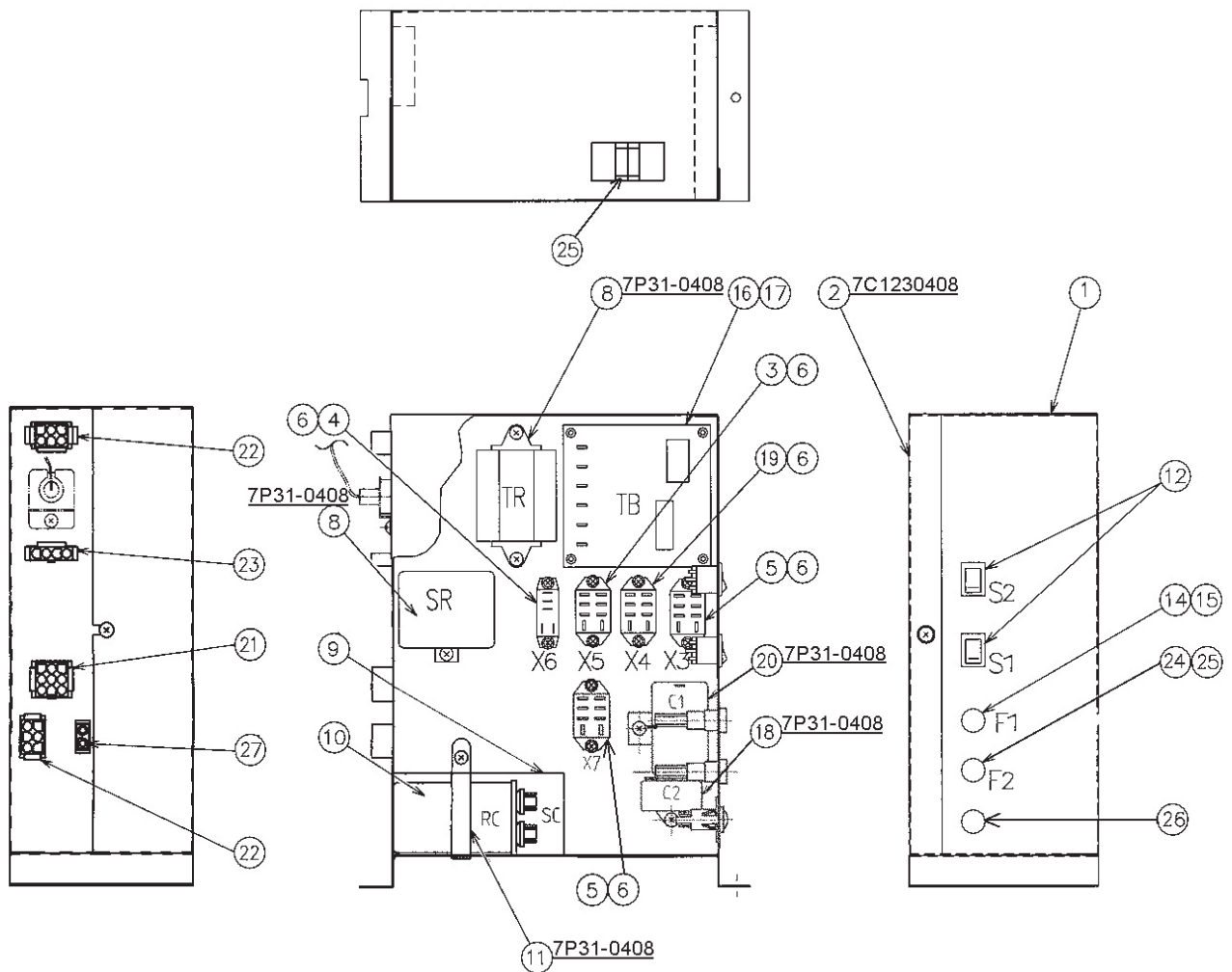
K-1, L-0, M-0



E. Control Box Assembly

F-500BAF/-C

M-1, N-0, P-0, P-1, Q-0

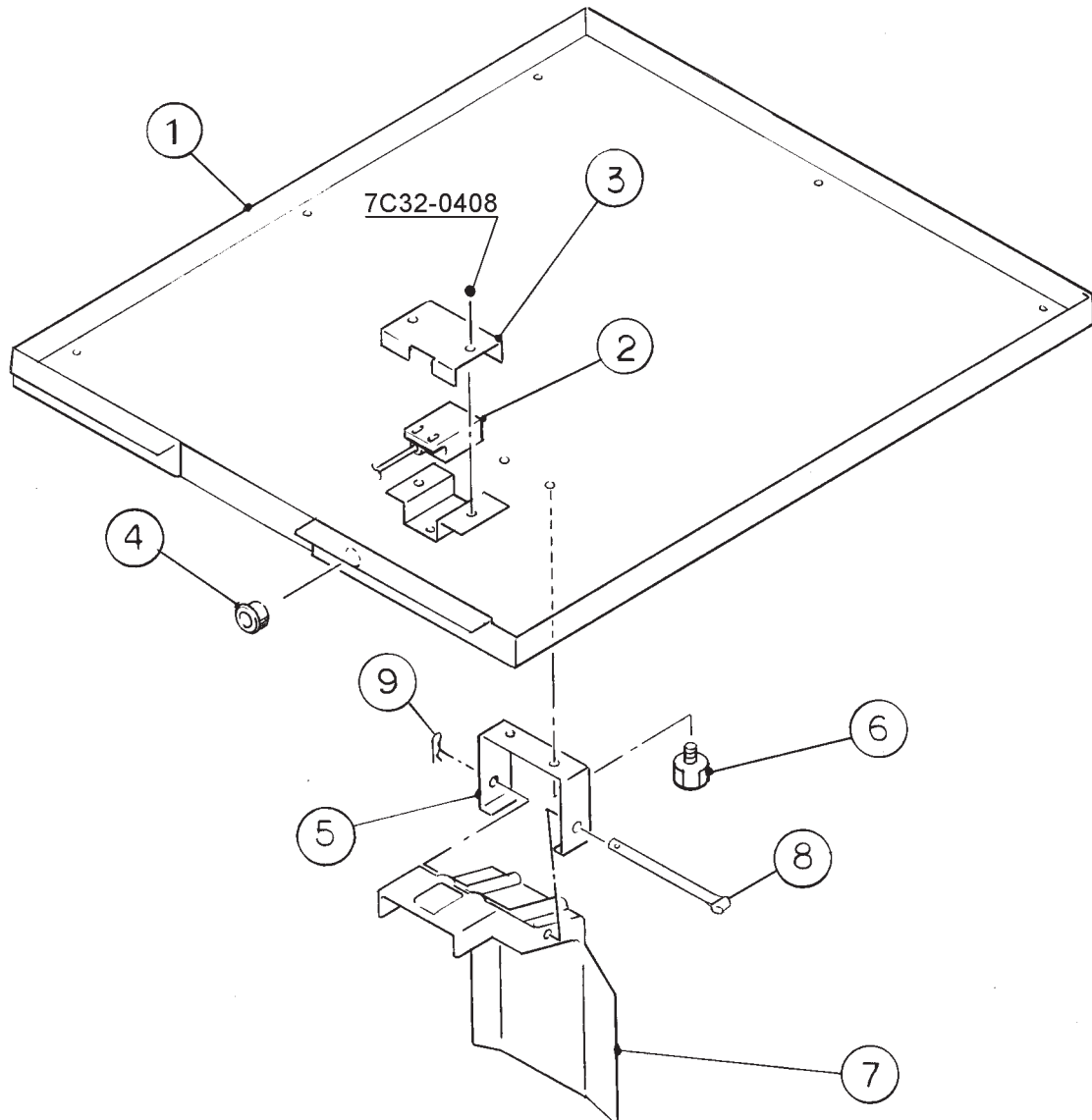


Title: E. Control Box Assembly Model: F-500BAF/C												
Index No.	Description	Material or Model Number	Part Number	Required Number								
				H-0 to K-0	K-1 L-0	M-0	M-1 to Q-0					
1	Control Box	GS	453691G01	1	-							
			4A2023G01		1	1	-					
			4A2023G02				1					
2	Cover - Control Box	GS	453692-01	1	1	1	1					
	Pan Head Screw w/Washer (SW)	4x8, SS	7C1230408	2	2	2	2					
3	Relay - Circuit Protect (X5)	LY-1F-HSD, 240V	418271-05	1	1	1	1					
4	Relay - Flush Valve Control (X6)	G2R-1-T, AC24V	430173-03	1	1	1	1					
5	Relay - Water Control (X3) - Safety (X7)	LY-2ZF, AC24V	406132-06	1	1	1	2					
6	Tapping Screw	-	431415-01	8	8	8	10					
7	Transformer	BE141625GEK	4A0557-01	1	1	1	1					
8	Starter	3ARR3CT5M5	4A1107-11	1	1	1	1					
	T2 Screw	4x8	7P31-0408	1	1	1	1					
9	Capacitor - Starting	-	3A0076-10	1	1	1	1					
10	Run Capacitor	X386S(HG01)	439943-04	1	1	-						
		-	3A2005-08			1	1					
11	Strap	GS	434580-10	1	1	-						
			4A2262-02			1	1					
	T2 Screw	4x8	7P31-0408	1	1	1	1					
12	Rocker Switch	62111929-0-0-N	4A0558-01	2	2	2	2					
13	Protector	W28XQ1A-3, 3A	440972-02	1	-							
14	Fuse	AGC-1, 1A 250V	4A0893-01	1	1	1	1					
15	Fuse Holder	HTB921	4A0892-01	1	1	1	1					
16	Timer Board	H2AA144C01	437305-01	1	1	1	1					
17	Board Support	CBLS37-N	4A0336-03	4	4	4	4					
18	Capacitor	UP25B505UEF	443192-02	1	1	1	1					
	T2 Screw	4x8	7P31-0408	1	1	1	1					
19	Relay - Gear Motor Protect (X4)	LY-2F, AC120V	406132-07	1	1	1	1					
20	Capacitor	UP33B126UWPF5M, 12F	4A0894-01	1	1	1	1					
	T2 Screw	4x8	7P31-0408	1	1	1	1					
21	9p Plug Housing	3191-09P-201	412832-02	1	1	1	1					
22	6p Plug Housing	3191-06P-201	412832-03	2	2	2	2					
23	4p Plug Housing	3191-04P-201	412832-05	1	1	1	1					
24	Fuse Holder	-	4A0892-02		1	1	1					
25	Fuse	-	4A0893-04		3	3	3					
26	Lamp	-	4A2672-01				1					
27	2p Plug Housing	-	412832-07				1					

F. Cover Assembly - Bin Top

F-500BAF/-C

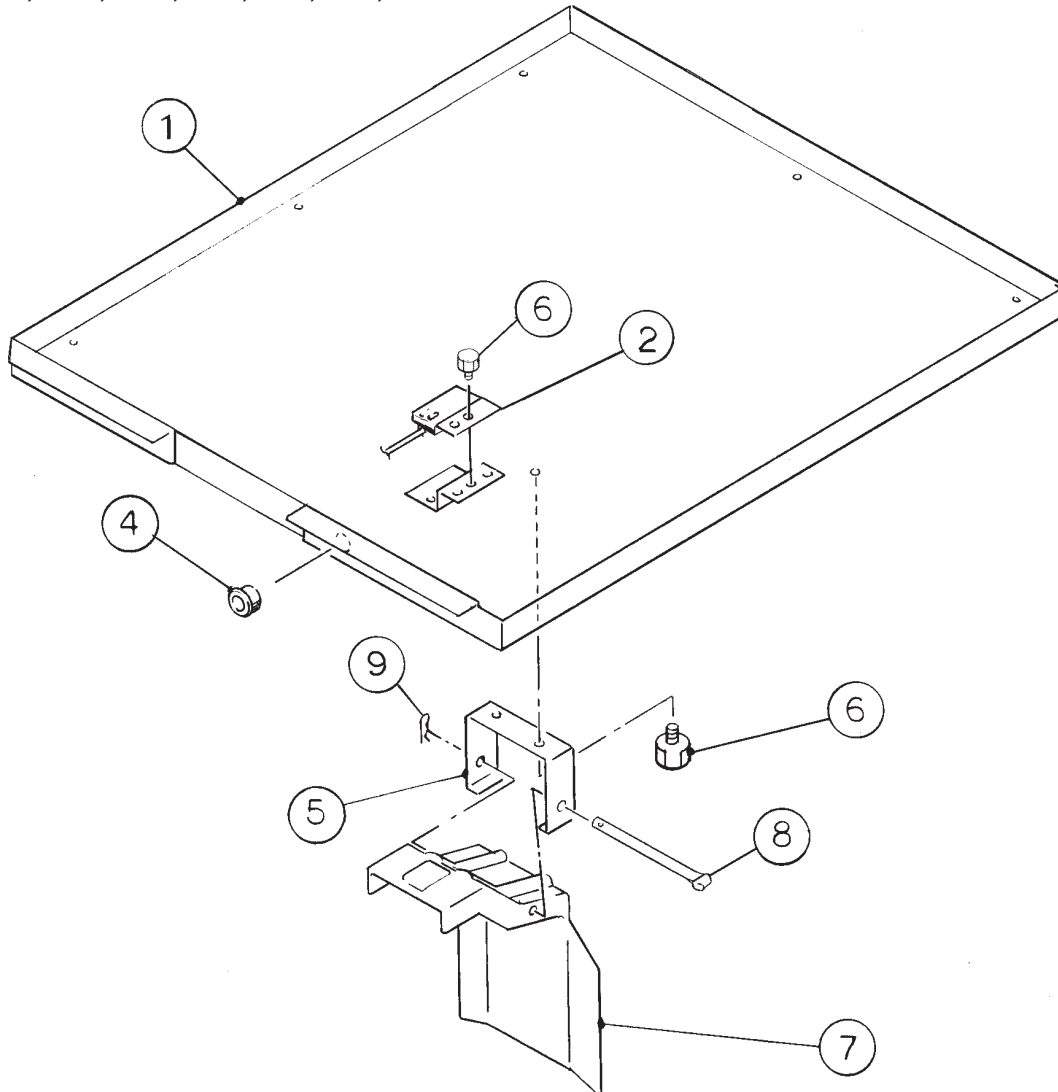
H-0, J-0, J-1, K-0



F. Cover Assembly - Bin Top

F-500BAF/-C

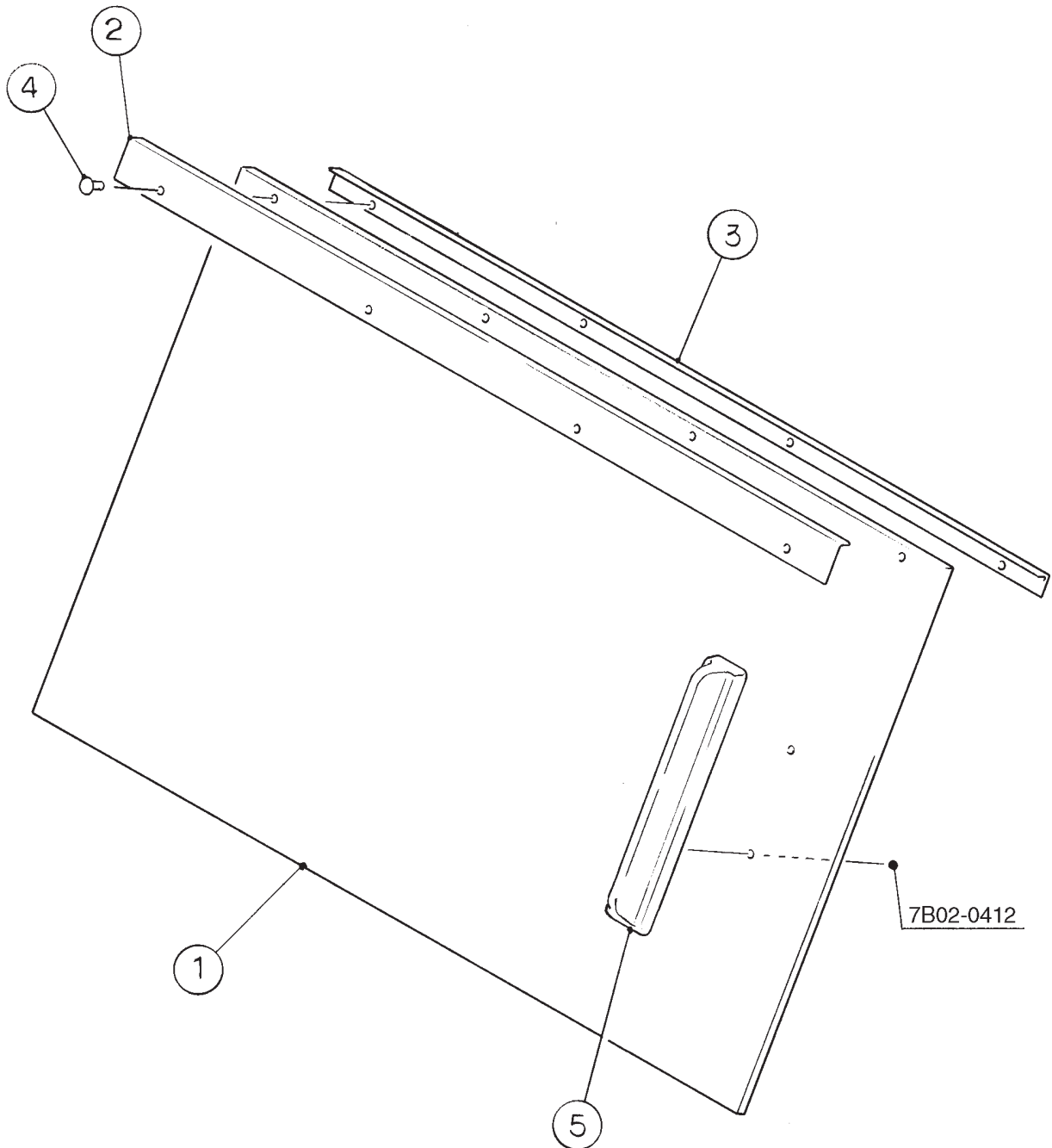
K-1, L-0, M-0, M-1, N-0, P-0, P-1, Q-0



Title: F. Cover Assembly - Bin Top Model: F-500BAF/-C				Required Number								
Index No.	Description	Material or Model Number	Part Number	H-0 to K-0	K-1 to P-0	P-1 Q-0						
1	Cover - Bin Top	SS	339873G01	1	-							
			3A1525G01			1	1					
2	Proximity Switch	RS-601	427223-01	1	-							
		-	4A2033-01			1	1					
3	Bracket - Switch	SS	427158-01	1	-							
	Truss Head Screw	4x8, SS	7C32-0408	2	-							
4	Bushing	SB-437-5	420470-07	1	1	1						
5	Hinge	SS	3A0762-01	1	1	1						
6	Thumbscrew	SS, ABS	415949G04	4	4	-						
			415949G08			4						
7	Actuator	ABS	208795G01	1	1	1						
8	Shaft	SS	412337-03	1	1	1						
9	Snap Pin	SS, SSP-4	715S-0004	1	1	1						

G. Sliding Door F-500BAF/-C

H-0, J-0, J-1, K-0, K-1, L-0, M-0, M-1, N-0, P-0, P-1, Q-0

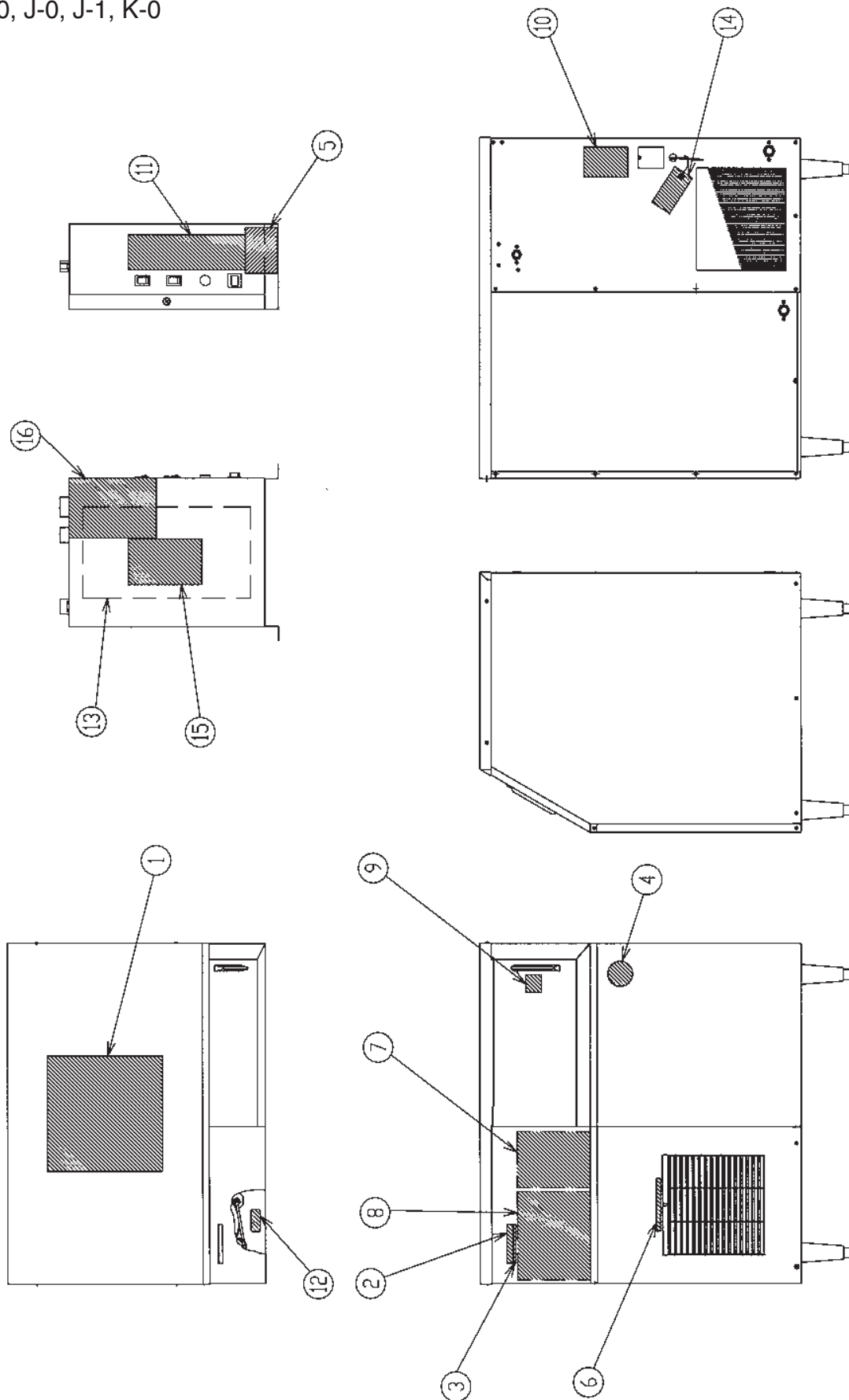


Title: G. Sliding Door Model: F-500BAF/-C															
Index No.	Description	Material or Model Number	Part Number	Required Number											
				H-0 to Q-0											
1	Sliding Door (A)	PC	453697-01	1											
2	Sliding Plate	SS	453698-01	1											
3	Sliding Collar	SS	453699-01	1											
4	Pop Rivet	USAD(45)ABS	7170-0032	4											
5	Handle	ABS	339877G01	1											
	Hex Head Bolt	4x12, SS	7B02-0412	2											

H. Label Location

F-500BAF/-C

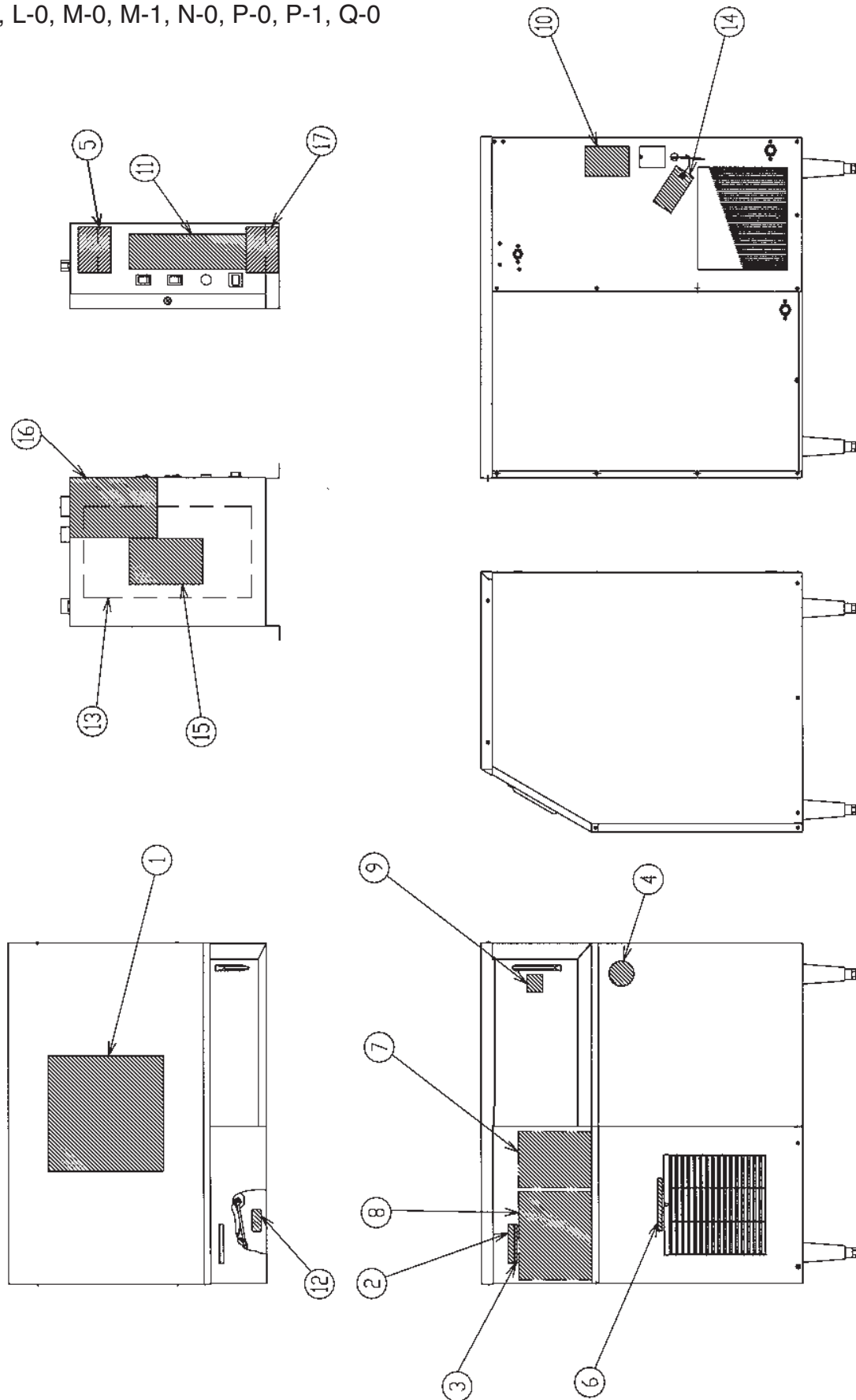
H-0, J-0, J-1, K-0



H. Label Location

F-500BAF/-C

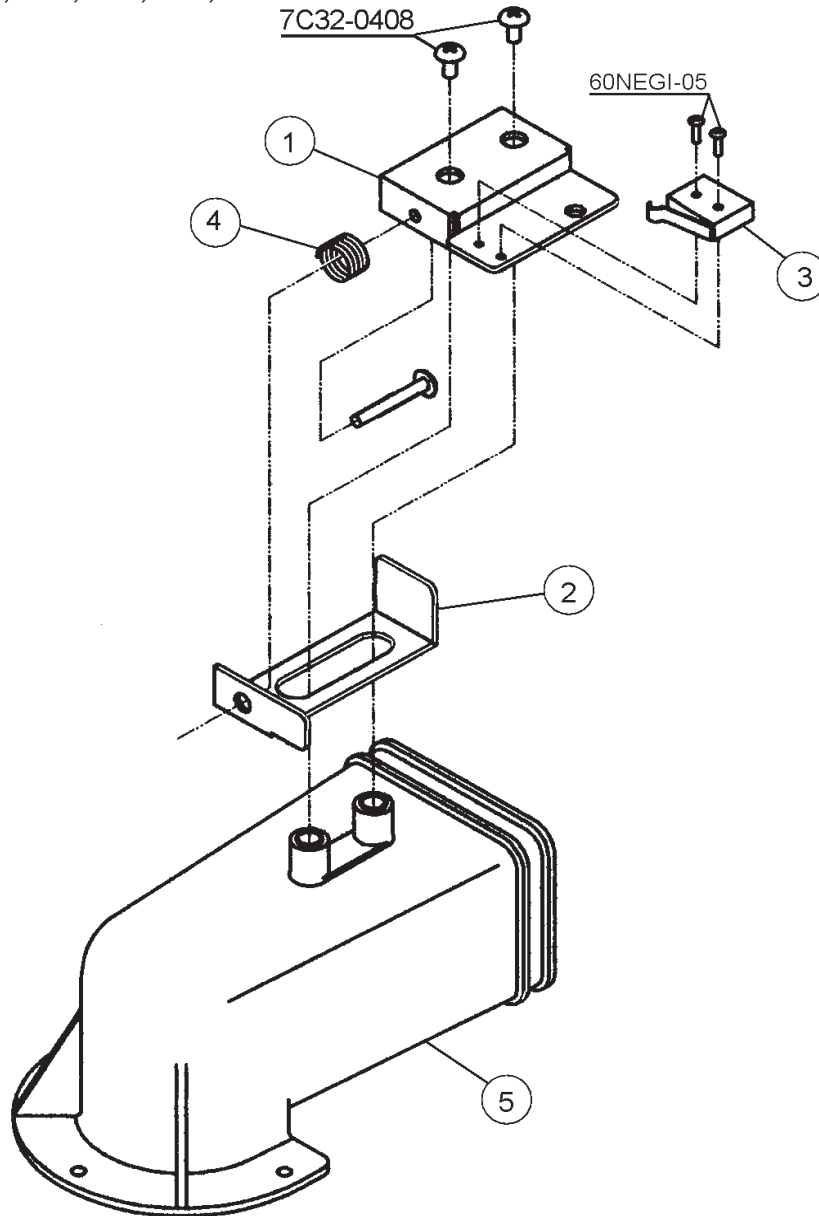
K-1, L-0, M-0, M-1, N-0, P-0, P-1, Q-0



Title: H. Label Location Model: F-500BAF/C												
Index No.	Description	Material or Model Number	Part Number	Required Number								
				H-0 to K-0	K-1 to M-0	M-1	N-0 to P-1	Q-0				
1	Instruction Sheet	PAPER	228916-01	1	1	1	1	1				
2	Emblem	-	4A0560-01	1	1	1	1	1				
3	Model Number Label	F-500BAF	4A1321-21	1	1	1	-					
		F-500BAF-C PETP FILM	4A1321-22	1	1	1	-					
4	Label - Penguin - HA-L	-	4A0526-02	1	1	1	1	1				
5	Caution Label (D)	PVC FILM	439144-01	1	1	1	1	1				
6	Label - Air Filter	PETP FILM	426177-01	1	1	1	1	1				
7	Maintenance Label	PVC FILM	341315-01	1	1	1	1	1				
		PVC FILM	214945-01	1	1	1	1	-				
			2A3442-01					1				
9	Label - Sliding Door	PETP FILM	427123-01	1	1	1	1	1				
10	Nameplate	F-500BAF	340211-01	1	1	1	-					
			3A2527-01				1	1				
		F-500BAF-C PES FILM	340211-02	1	1	1	-					
			3A2527-02				1	1				
11	Control Label	PVC FILM	453704-01	1	-							
			4A1613-01		1	-						
			4A2767-01			1	1	1				
12	Label - R404A	-	4A0960-01	1	1	1	1	1				
13	Wiring Label	PVC FILM	340012-01	1	-							
		-	3A1504-01		1	-						
			3A2342-01			1	1	1				
14	Tag - Warning: Electrical Connection	PAPER	435005-01	1	1	1	1	1				
15	Caution Label (B)	PVC FILM	439142-01	1	1	1	1	1				
16	Rating Label	F-500BAF	4A1671-01	1	1	1	-					
			3A2528-01				1	1				
		F-500BAF-C PES FILM	4A1672-01	1	1	1	-					
			3A2528-02				1	1				
17	Label – (GM) Fuse	-	4A1614-01		1	-						
			4A2834-01			1	1	1				

J. Spout Assembly F-500BAF/-C

M-1, N-0, P-0, P-1, Q-0



Title: J. Spout Assembly Model: F-500BAF/-C					Required Number								
Index No.	Description	Material or Model Number	Part Number	H-0 to M-0	M-1 to Q-0								
1	Switch Bracket	-	350284-01		1								
2	Lever - A	-	3A2365-01		1								
	Truss Head Screw	4x8, SS	7C32-0408		2								
3	Microswitch (Safety Switch)	-	4A2832-01		1								
	Pan Head Screw w/Washer (SW)	2.3x10, SS	60NEGI-05		2								
4	Spring	-	459287-01		1								
	Truss Head Screw	4x30, SS	7C32-0430		1								
5	Spout	-	232636G01		1								

K. Accessories & Packaging

F-500BAF/-C

H-0, J-0, J-1, K-0, K-1, L-0, M-0, M-1, N-0, P-0, P-1, Q-0

Title: K. Accessories & Packaging Model: F-500BAF/-C												
Index No.	Description	Material or Model Number	Part Number	Required Number								
				H-0 to P-0	P-1 Q-0							
1	Instruction Manual	PAPER	91A2HA10D	1	1							
2	Scoop	-	4A2246-01	1	1							
3	Leg - Box of 4, Stainless Steel (Option)	4A2113-01	LP-6	1	1							
	Leg - Box of 4, Painted (Option)	444138-01	LP-6P	1	1							
Packaging (available only on models in production)			1A0531A06									
1	Carton	-	2A0839-18	1	-							
			2A2903-16		1							
2	Corner Post	-	3A0782-03	2	2							
3	Corner Post	-	3A0782-09	4	4							
4	Side Protector	-	4A2304-01	4	4							
5	Wood Block B	-	4A0004-02	4	4							
6	Pallet	-	2A0853-08	1	1							

Free Manuals Download Website

<http://myh66.com>

<http://usermanuals.us>

<http://www.somanuals.com>

<http://www.4manuals.cc>

<http://www.manual-lib.com>

<http://www.404manual.com>

<http://www.luxmanual.com>

<http://aubethermostatmanual.com>

Golf course search by state

<http://golfingnear.com>

Email search by domain

<http://emailbydomain.com>

Auto manuals search

<http://auto.somanuals.com>

TV manuals search

<http://tv.somanuals.com>