

HP Insight Control Server Deployment 7.3 Update 1 User Guide

HP Part Number: 656830-004
Published: June 2014
Edition: 1



© Copyright 2003, 2014 Hewlett-Packard Development Company, L.P.

Confidential computer software. Valid license from HP required for possession, use or copying. Consistent with FAR 12.211 and 12.212, Commercial Computer Software, Computer Software Documentation, and Technical Data for Commercial Items are licensed to the U.S. Government under vendor's standard commercial license.

The information contained herein is subject to change without notice. The only warranties for HP products and services are set forth in the express warranty statements accompanying such products and services. Nothing herein should be construed as constituting an additional warranty. HP shall not be liable for technical or editorial errors or omissions contained herein.

Acknowledgments

Microsoft and Windows are U.S. registered trademarks of Microsoft Corporation. Windows Server is a U.S. trademark of the Microsoft group of companies. AMD is a trademark of Advanced Micro Devices, Inc. Intel is a trademark or registered trademark of Intel Corporation or its subsidiaries in the United States and other Countries.

Contents

1	Overview.....	4
2	Licensing.....	5
	License types.....	5
	Adding a license file to an existing installation.....	5
3	Getting started.....	6
	Deployment Console basics.....	6
	Connecting server blades.....	7
	Deploying the first server blade.....	7
	Reconfiguring the server blade.....	7
4	Changing deployment server/solution username or password (after initial installation).....	9
	Prerequisites.....	9
	Changing the password.....	9
	Changing service account password.....	9
	Changing each service log on username and password.....	9
	Changing the Windows user password.....	10
	Drive mappings and file permissions.....	10
	Changing the database's user password (example: SQL Server Express).....	11
	Changing the password in the PXE configuration utility (if PXE is installed locally).....	11
5	Reference.....	12
	Design.....	12
	Firmware and hardware features.....	12
	Windows features.....	13
	Linux features.....	14
	Virtualization Host features.....	15
6	Support and other resources.....	17
	Information to collect before contacting HP.....	17
	How to contact HP.....	17
	Security bulletin and alert policy for non-HP owned software components.....	17
	Subscription service.....	17
	Registering for software technical support and update service.....	17
	How to use your software technical support and update service.....	18
	HP authorized resellers.....	18
	Related information.....	18
	Typographic conventions.....	18
7	Documentation feedback.....	20
A	Manually installing distribution files.....	21
B	Manually modifying configuration settings.....	23
	Synchronize display names with computer names option.....	23
	Primary lookup key option.....	23
	PXE initial deploy boot timeout option.....	23
	Client/server file transfer port option.....	23
	Windows product keys.....	23

1 Overview

HP Insight Control server deployment is a server deployment solution that provides:

- Automated server hardware configuration and operating system deployment.
- Consistent Windows, VMware, and Linux deployment on the latest HP servers.
- Scalable deployment of ProLiant Blade Servers.

This document describes the provided content and outlines how to get started.

NOTE: This document does not cover how to use the Altiris Deployment Server. You can find Altiris Deployment Server help in the Deployment Console help menu.

You can find additional help in the Knowledge Base at <http://www.hp.com/go/insightdeploy/kb>. It contains:

- Release notes (which contain known issues, supported hardware and operating systems, and so on)
- Troubleshooting information
- How-to procedures
- Frequently asked questions

The following are some key articles in the knowledge base.

Table 1 Knowledge Base articles

Article number	Title
20000001	<i>License Files And Licenses</i>
20000023	<i>Primary Lookup Key And Virtual Connect</i>
20000037	<i>Troubleshooting Windows 2008 Sysprep Image Installs</i>
20000038	<i>Servers With Multiple Disks Deployment Support</i>
20000039	<i>How To Perform a Boot From SAN Installation</i>
20000042	<i>How To Install Software Packages And Support Packs</i>
20000043	<i>How To Add A Windows Localized Distribution Or Edition</i>
20000063	<i>Fibre Channel Over Ethernet (FCoE) And Internet Small Computer System Interface (iSCSI) Deployment Support</i>
20000086	<i>Roles/Features to be enabled in IIS for Deployment Server/Web Console installed on Windows 2012</i>

2 Licensing

A license allows Insight Control server deployment to deploy and manage either a physical server or a virtual machine. One license is required to manage each server. After you apply a license to a server, you cannot remove or transfer the license to another server. A license file contains licenses for a predetermined number of servers. Purchased license files are not specific to Insight Control server deployment versions. To view the number of licensed nodes from the console, click **Help>About**.

License types

10-node, 7-day evaluation license—This license is built into the Deployment Server.

You can purchase licenses for HP Insight Control Server Deployment from <http://h30094.www3.hp.com/Server-options/ProLiant-Essentials-software/Rapid-deployment-pack/store17/search183/dept1150>.

Adding a license file to an existing installation

To add a license file to an existing installation:

1. Shut down all Deployment Server Consoles and Deployment Server Web Consoles.
2. Click **Start>Programs>Altiris>Deployment Solution>Product Licensing Utility**.
3. Enter the path to the new license file in the **Activation Key File Information** field and click **Next**.
4. Follow the instructions to apply your additional licenses.

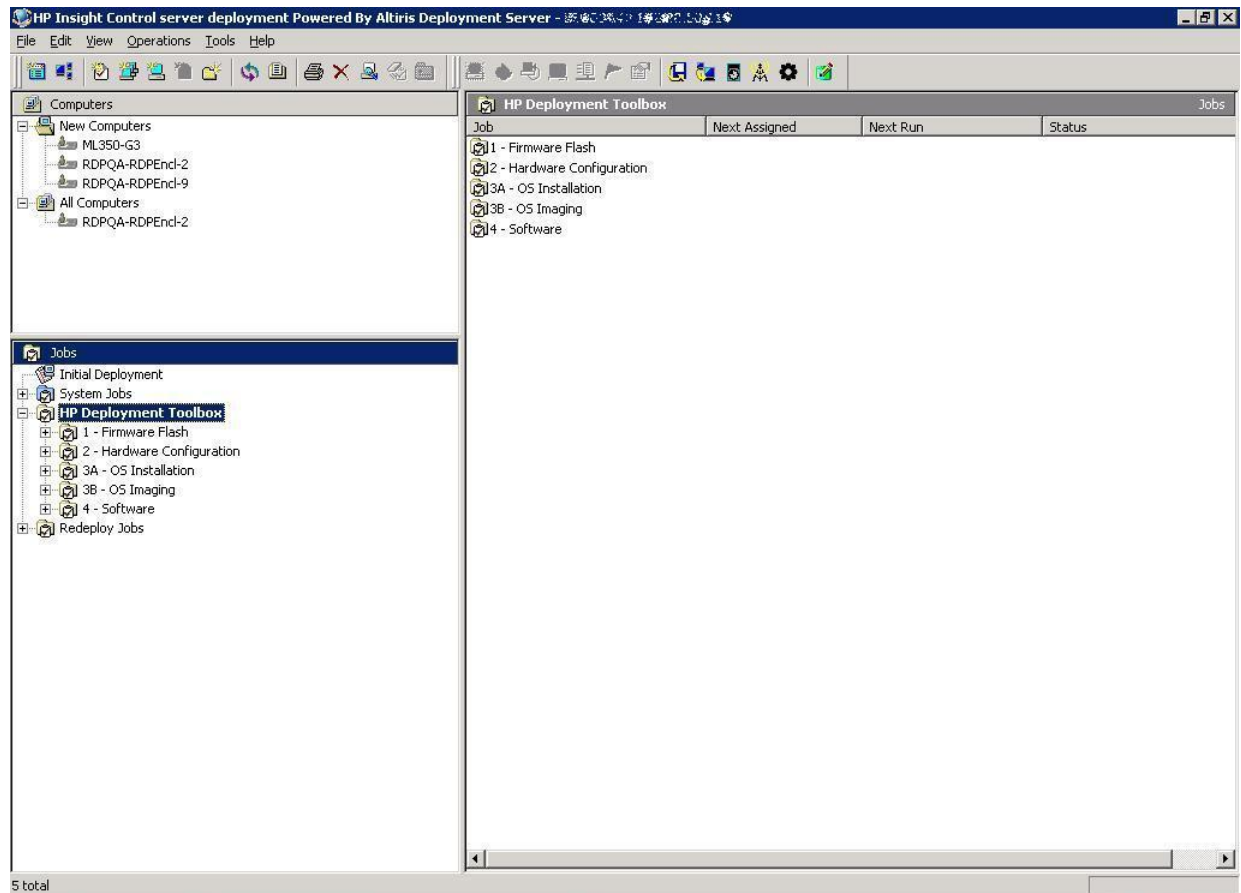
If you have combined or transferred licenses and have obtained a new license file, to replace your existing license file follow the steps above for adding a license file.

On the third wizard step, select **Replace all existing license Activation Keys with this new Activation Key**.

3 Getting started

To get started, double-click the **Deployment Console** icon on the desktop. The Deployment Console, from which you can manage computers and execute jobs, appears.

Deployment Console basics



- **Computers pane**

This pane shows managed computers. The New Computers group shows computers that have connected to the Deployment Server for the first time. Click **View**→**Show Physical Devices** to show the Physical Devices group.

- **Jobs pane**

This pane shows the provided jobs.

- **Details pane**

The right-hand side of the console displays information about the selected computer or job. For each computer, basic properties and job history appear. For each job, tasks and computer history appear. The **Job Schedule Information** dialog box displays the status of each task in the schedule. To view this dialog box, double-click an item in the job history or computer history. The **Schedule Status Detail** dialog box displays return codes and status messages. To view this dialog box, click **Status Details**.

To execute a job, drag and drop one or more computers onto a job, or vice-versa.

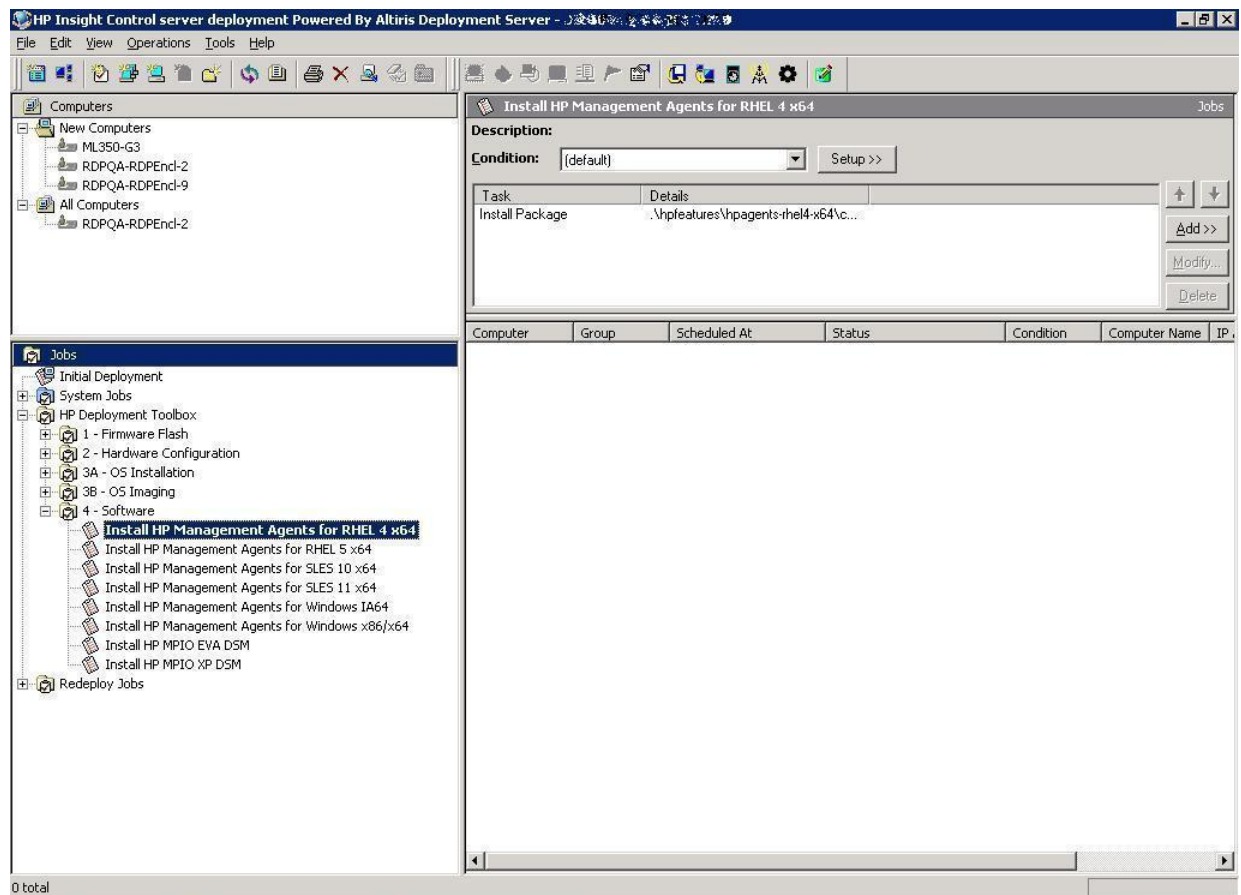
Connecting server blades

1. Connect the enclosure to the network that contains your Deployment Server, and power up the enclosure.
2. Change the default rack and enclosure names.
3. Insert the server blades into the enclosure and wait for the blades to power up.
4. From the **Computer** pane, right-click on a server blade and select **Power Control**→**iLO – Interface**.

The iLO homepage appears.

Deploying the first server blade

1. In the **Jobs** pane, select a Windows scripted install job. Drag the job to the server blade in the **Computers** pane.



2. Select **Run this job immediately**, and then click **OK**.
3. To view the progress of the job, double-click the computer in the job's computer history.

Reconfiguring the server blade

By default the Windows scripted install job configures the computer name as the console display name and configures the network as DHCP.

If you need to reconfigure the server:

1. In the **Computers** pane, right-click the blade and click **Configure**.
2. Click **Microsoft Networking**, and then enter a new computer name and a new workgroup or domain name.
3. Click **TCP/IP**, and then enter the appropriate IP information.

4. Click **OK**.
5. Select **Run this job immediately**, and then click **OK**.
6. If the Windows scripted install job is still running when the warning message appears, click **OK**.

NOTE: HP recommends that HP Insight Control Server Deployment must run only on private secure networks to prevent risk of security compromise.

4 Changing deployment server/solution username or password (after initial installation)

Prerequisites

Before changing the password perform the following steps:

1. Verify that Insight Control server deployment has been installed and configured correctly with the local SQL server.
2. Verify that all Insight Control server deployment/Altiris servers are running successfully.

Changing the password

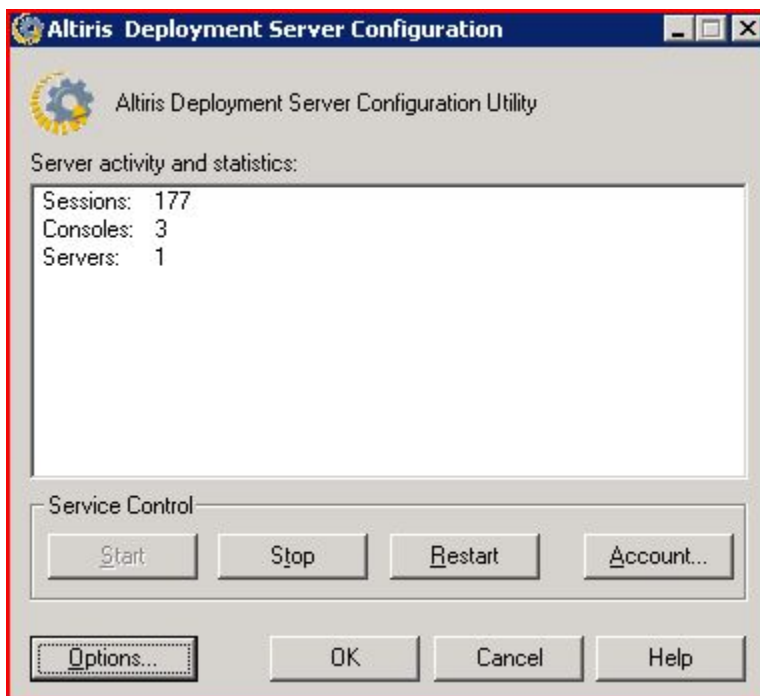
To change the password after Insight Control server deployment installation, perform the following steps:

1. Log out from the Administrator account to take the password change settings.
2. Verify the services of SQL server whether they are running or not. (SQL services should be running).

Changing service account password

To change the service account password, perform the following steps:

1. Click **Start**→**All Programs**→**Altiris**→**Deployment Solution**→**Configuration**. A new window opens.

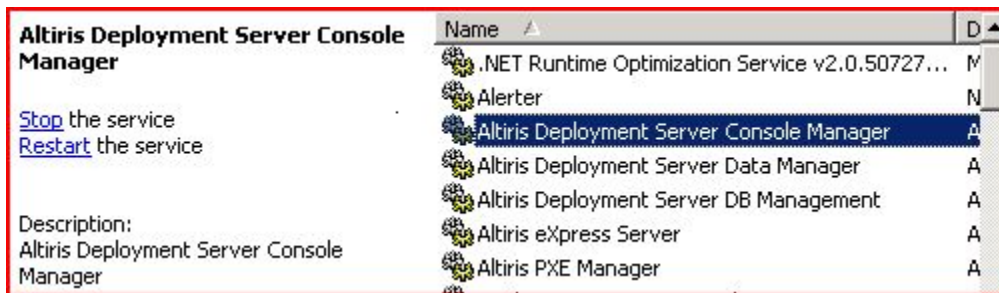


2. Click **Account**.
3. Change the username and password, then click **OK**, **OK**.

Changing each service log on username and password

To change each service log-on username and password, perform the following steps:

1. Click **Start**→**Run**. Type "services.msc" > change the logon password of the services mentioned below by Right-click on the service, click "Properties", click the "Log On" tab, change the password and confirm password with the new username/password, click "OK"
2. Type `services.msc`.
3. Change the logon password of the following services.
 - Altiris Deployment Server Console Manger
 - Altiris Deployment Server Data Manager
 - Altiris Deployment Server DB Management
 - Altiris eXpress Server Altiris PXE Manager



Right-click on the service, click **Properties**, click the **Log On** tab, then change the password.

Changing the Windows user password

You can change the Windows user password in several ways.

If you are logged in as the Administrator user, you can press **CTRL + ALT + DELETE** and click **Change Password**, then change your password and confirm it.

NOTE: This method is preferred because it does not require you to accept the message that reports that some data could be lost.

You can also change the password by right-clicking on **My Computer**, selecting **Manage+System Tools+Local Users and Groups+Users**.

Alternately, open Local Users and Groups by clicking **Start+Run**, then typing `lusrmgr.msc`, and pressing **Enter**.

Right-click on the user and select **Set Password**, click **Proceed**. Type in a password of your choice, then confirm the password.

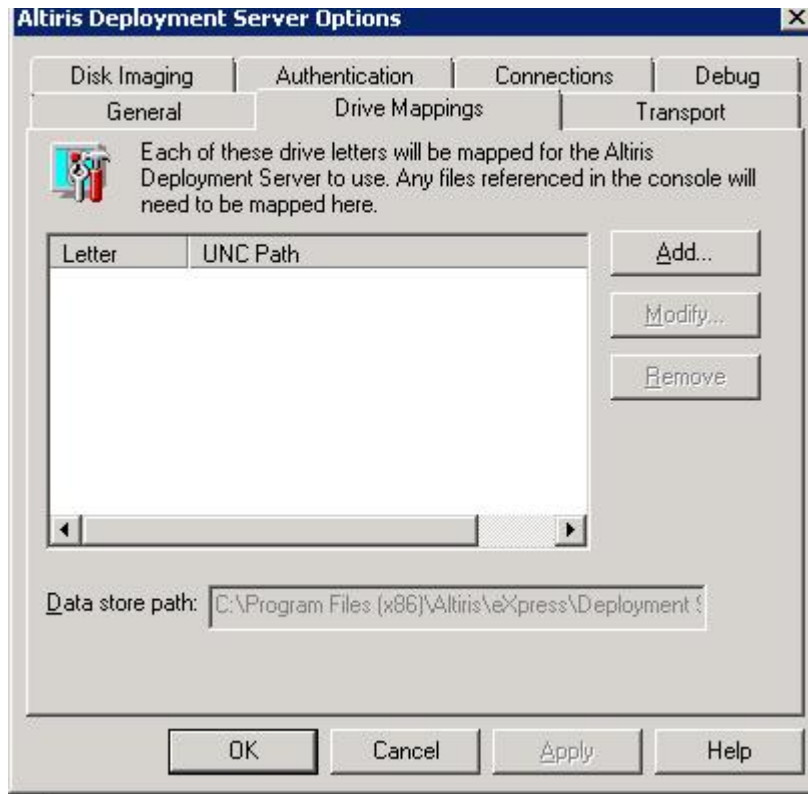
Drive mappings and file permissions

All of the drives that are mapped in your Altiris Deployment Solution Configuration require that you modify those file systems and mappings to have the same username and password as your Altiris Deployment Solution. For example, if your Altiris Deployment Solution Server has had all of the passwords change for the username "Administrator," then you must create a user on your other file shares on other servers to have the same username "Administrator" and password. You may need to follow the Changing the Windows user password procedure for each server. You may also need to verify that the shared folder has the correct file permissions. In some cases on Windows machines, you must grant them both NTFS and sharing permissions.

If you have any jobs that were set up to run with a specific username and password, you may need to change those jobs as well.

To modify file systems and mappings, perform the following steps:

1. Click **Start+All Programs+Altiris+Deployment Solution+Configuration**. A new window opens.
2. Click the **Option**.
3. Select **Drive Mapping** to change the credentials.



Changing the database's user password (example: SQL Server Express)

To change the user password on the database, perform the following steps:

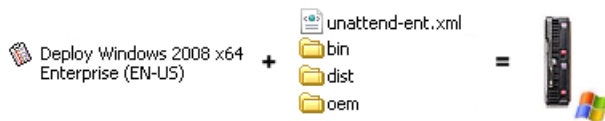
1. Click **Start Menu+ All Programs +Microsoft SQL Server 2005+ SQL Server Management Studio Express**.
2. Login with your username and password.
3. Click the **Security** folder and the **Logins** folder.
4. Double-click on the user and change the password.

Changing the password in the PXE configuration utility (if PXE is installed locally)

To change the password in the PXE configuration utility (if PXE is installed locally), perform the following steps:

1. Select the **PXE Configuration Utility +Boot Menu** tab.
2. Select **Linux Managed** and click the **Edit** button. A new window, **Edit Shared Menu option**, opens.
3. Click **Edit Boot Image**. A new window, **Boot disk creator- Linux Configuration**, opens.
4. Click on the **Edit** button. A new window, **Boot disk creator Step 1**, opens.
5. Follow the windows by clicking the **Next** button until the credential page **Step 5 of 11** displays.
6. Change the password and click **Next** to complete the steps.
7. Click **Finish** to complete the task.
8. Click **OK** to close the **Edit Shared Menu option**.
9. Select the **Window PXE** option and repeat Steps 3 through 8 to regenerate the windows PXE.

5 Reference



Design

HP delivers content as "features," each of which is a self-contained set of files and jobs. Each feature is independent, and resides in its own folder with key files located in the root folder and other supporting files located in various subfolders.

Because the features are independent, their jobs are also independent. That means there are no monolithic jobs that configure the system, configure the smart array, install an operating system and install a support pack. Jobs are solely in a toolbox scheme. Servers auto-configure themselves, so default hardware configuration jobs are not necessary. If needed, hardware configuration jobs will have to be scheduled before operating system jobs. There are a few exceptions to this scheme, such as jobs that deploy a virtualization host include a system configuration task to enable the processor virtualization extensions.

Operating system feature naming consists of four elements — *os+version*, *architecture*, *edition*, and *language/locale* — that appear in some combination between the feature's folder name and the answer file names. There are a few exceptions to this scheme, such as operating systems that do not include the concept of editions. Operating system features map one-to-one with their media. For example, for Windows Server 2008 Enterprise (X64) English, the folder name is `ws6-x64-en_us` and the unattend answer files are `unattend-ent.xml` and `unattend-std.xml`. There is one media consisting of multiple editions.

The provided jobs and files are sufficient for generic operating system deployment. For more complex deployments, you can use the provided jobs and files as templates. When this is the case, HP strongly recommends that you follow a copy, rename, and modify process — copy the job or file, rename it so that the name conveys the new behavior, and make the necessary modifications. This process provides a clean separation between the customized jobs and the provided jobs and enables the provided jobs to act as working baselines.

NOTE: When editing ESX or Linux files on the Deployment Server, use a text editor that saves the file in Linux compatible format.

NOTE: When editing Windows 2008 answer files, use the Windows System Image Manager utility included in the Windows Automated Installation Kit (AIK).

NOTE: Server Deployment program files inherit file and folder permissions from their parent folder. Express share needs a minimum of read permission to allow all users to download and to execute the task.

Firmware and hardware features

These features enable you to flash the firmware, read/write system configuration, read/write smart array configuration, and read/write fiber channel host bus adapter configuration.

- Jobs denoted with `server-specific` use an input or output filename based on the computer ID of the target server instead of a static filename. To determine the computer ID, in the Deployment Console, right-click on the computer and select **Properties**.
- To determine the filename of the input or output file, look for the `inputfilename` or `outputfilename` variable in the relevant Run Script task.
- When executing a read job, the output file will be overwritten.

- All input and output files are stored in the root of the feature.
- The `bin` subfolder contains various scripts and utilities.
- For firmware, the `components` subfolder contains the contents of the `\compaq\swpackages` directory from the Firmware CD.
- For firmware, overwriting the `components` subfolder with a newer version of the Firmware CD is not supported.
- For firmware, the `logs` subfolder contains output logs from the flashing utility. The log filenames are based upon the computer ID of the target server. Every time the job is executed against a server, that log file gets appended to.
- Proliant jobs use the LinuxPE automation environment. Integrity jobs use the WinPE automation environment.

Windows features

These features enable you to deploy Windows either via a scripted install or Sysprep imaging.

- Scripted install product keys are stored in the express database, **user_tokens** table.
- Sysprep product keys can be accessed and modified in the Deployment Server Console Options dialog.
- You can accomplish most customizations by either editing the answer file or adding a step to the `*-post.cmd` script.
- You can change the default Altiris Deployment Agent settings by editing the `aclient.inp` file.

Table 2 Typical Windows scripted install job layout

Task	Description
Distribute Disk Image	Partitions and formats the target hard drive.
Run Script – Copy OEM Files	Copies drivers to the target hard drive.
Run Script – Configure Answer File	Generates the unattend answer file for this target.
Run Script – Install OS	Starts the Windows scripted install.
Install Package	Performs any additional configuration and installs additional software. NOTE: This task will not execute until: <ul style="list-style-type: none"> • The operating system has been installed. • The Altiris agent has been installed and connects to the Deployment Server.
Power Control	Reboots the target for all changes to take effect.

Table 3 Typical Windows file layout






File/Subfolder	Description
 unattend files	
 sysprep files	
 bin\	Various support utilities
 dist\	Distribution files
 images\	Captured Sysprep images

Table 3 Typical Windows file layout (continued)




File/Subfolder	Description
 oem\	Post-deployment scripts for configuration and software installation
 drivers\	Drivers required for deployment
 components\	A small set of smart components required to make the target manageable

Table 4 Windows scripted install default settings

Component	Default setting
Administrator password	The administrator password is <code>password</code> . For Windows 2003, this password is stored as clear text in the unattend answer file. HP recommends changing the default administrator password. NOTE: To hide local administrator passwords, use the "Hide Sensitive Data in an Answer File" option in "Windows System Image Manager" available in Microsoft Windows AIK.
Drive configuration	A single partition is created automatically that expands to the full drive size.
Computer name	The computer name uses the 15 right-most characters of the console display name.
Firewall	Firewall settings are disabled.
Networking	Added to workgroup "WORKGROUP". SNMP and WMI are enabled. The default value of the SNMP community is <code>public</code> .

Linux features

These features enable you to deploy Red Hat Enterprise Linux (RHEL) or SUSE Linux Enterprise Server (SLES) via a scripted install.

- You can accomplish most customizations by either editing the answer file or adding a step to the `*-post.sh` script.
- You can change the default Altiris Deployment Agent settings by editing the `adlagent.conf` file.

Table 5 Typical RHEL and SLES scripted install job layout

Task	Description
Distribute Disk Image	Partitions and formats the target hard drive.
Run Script – Configure Boot Environment	Copies the distribution's <code>initrd</code> , <code>kernel</code> , and <code>grub</code> configuration to the hard drive.
Run Script – Configure Answer File	Generates the <code>kickstart</code> or <code>control</code> answer file for this target.
Install Package	Performs any additional configuration and installs additional software. NOTE: This task will not execute until: <ul style="list-style-type: none"> • The operating system has been installed. • The Altiris agent has been installed and connects to the Deployment Server.
Power Control	Reboots the target for all changes to take effect.

Table 6 Typical RHEL and SLES file layout








File/Subfolder	Description
 answer files	
 bin\	Various support utilities
 dist\	Distribution files
 oem\	Post-deployment scripts for configuration and software installation; as needed, boot files for deployment
 drivers\	As needed, drivers required for deployment
 components\	A small set of smart components required to make the target manageable
 updates\	Contains operating system specific updates, installed after operating system installation.

Table 7 RHEL and SLES scripted install default settings

Component	Default setting
Root password	The root password is password . This password is stored as clear text in the kickstart/control file. HP recommends changing the default root password. NOTE: Anonymous network users can access the kickstart file. HP recommends changing the kickstart file password to the default, once the job is complete.
Drive configuration	The disk space is portioned according to RHEL or SLES default specifications. RHEL installs Logical Volume Manager (LVM) by default.
Host name	The Linux host name uses the console display name.
Packages	Basic Linux server packages are installed.
Firewall	Firewall settings are disabled.
Networking	All NICs are enabled. SNMP is enabled. The default value of the SNMP community is public.

Virtualization Host features

These features enable you to deploy Hyper-V, ESX, or ESXi via a scripted install.

- The design of the Hyper-V features is very similar to Windows.
- The design of the ESX features is very similar to Linux.
- Imaging of virtualization hosts is not supported.
- The scripted install jobs include a system configuration task to enable processor virtualization extensions.

Design of ESXi is not similar to other operating systems: ESXi does not run Altris Adlagent, but is an agent-less deployment. Limited network configuration tasks are supported on ESXi from RDP 6.3.1 and later; however, network configuration tasks (known as reconfigure tasks) must be scheduled before scheduling ESXi deployment task

Table 8 Hyper-V scripted install default settings

Component	Default setting
Administrator password	The administrator password is password .
Drive configuration	A single partition is created automatically that expands to the full drive size.

Table 8 Hyper-V scripted install default settings *(continued)*

Component	Default setting
Computer name	The computer name uses the 15 right-most characters of the console display name.
Firewall	Firewall settings are disabled.
Networking	Added to workgroup "WORKGROUP". SNMP and WMI are enabled.

Table 9 ESX scripted install default setting

Component	Default setting
Root password	The root password is <code>password</code> . This password is stored in encrypted form in the kickstart file. HP recommends changing the default root password.
Drive configuration	When configuring the disk partition for a scripted operating system installation, various VMware ESX Server specific partitions are created. These settings are default. Do not change them.
Host name	The host name uses the console display name.
Packages	VMware ESX Server specific packages are installed. Do not change this setting.
Firewall	Firewall settings are disabled. SSH configuration modified to allow root login.

6 Support and other resources

Information to collect before contacting HP

Be sure to have the following information available before you contact HP:

- Software product name
- Hardware product model number
- Operating system type and version
- Applicable error message
- Third-party hardware or software
- Technical support registration number (if applicable)

How to contact HP

Use the following methods to contact HP technical support:

- In the United States, see the Customer Service / Contact HP United States website for contact options:
http://welcome.hp.com/country/us/en/contact_us.html
- In the United States, call 1-800-HP-INVENT (1-800-474-6836) to contact HP by telephone. This service is available 24 hours a day, 7 days a week. For continuous quality improvement, conversations might be recorded or monitored.
- In other locations, see the Contact HP Worldwide website for contact options:
<http://welcome.hp.com/country/us/en/wwcontact.html>

Security bulletin and alert policy for non-HP owned software components

Open source software (such as OpenSSL) or third-party software (such as Java) are sometimes included in HP products. HP discloses that the non-HP owned software components listed in the Insight Management end user license agreement (EULA) are included with Insight Management. The EULA is included with the Insight Management Installer on Insight Management DVD #1.

HP addresses security bulletins for the software components listed in the EULA with the same level of support afforded HP products. HP is committed to reducing security defects and helping you mitigate the risks associated with security defects when they do occur.

When a security defect is found, HP has a well defined process that culminates with the publication of a security bulletin. The security bulletin provides you with a high level description of the problem and explains how to mitigate the security defect.

Subscription service

HP recommends that you register your product at the Subscriber's Choice for Business website:

http://www.hp.com/country/us/en/contact_us.html

After registering, you will receive email notification of product enhancements, new driver versions, firmware updates, and other product resources.

Registering for software technical support and update service

Insight Management includes one year of 24 x 7 HP Software Technical Support and Update Service. This service provides access to HP technical resources for assistance in resolving software implementation or operations problems.

The service also provides access to software updates and reference manuals in electronic form as they are made available from HP.

With this service, Insight Management customers benefit from expedited problem resolution as well as proactive notification and delivery of software updates. For more information about this service, see the following website:

<http://www.hp.com/services/insight>.

Registration for this service takes place following online redemption of the license certificate.

How to use your software technical support and update service

As HP releases updates to software, the latest versions of the software and documentation are made available to you. The Software Updates and Licensing portal gives you access to software, documentation, and license updates for products on your HP software support agreement.

You can access this portal from the HP Support Center:

<http://www.hp.com/go/hpsc>

After creating your profile and linking your support agreements to your profile, see the Software Updates and Licensing portal at <http://www.hp.com/go/hpsoftwareupdatesupport> to obtain software, documentation, and license updates.

HP authorized resellers

For the name of the nearest HP authorized reseller, see the following sources:

- In the United States, see the HP U.S. service locator website:
http://www.hp.com/service_locator
- In other locations, see the Contact HP worldwide website:
<http://www.hp.com/go/assistance>

Related information

Documents

- HP Insight Control documentation:
<http://www.hp.com/go/insightcontrol/docs>

Websites

- Knowledge Base:
<http://www.hp.com/go/insightdeploy/kb>
- HP Insight Control:
<http://www.hp.com/go/insightcontrol>
- Systems Insight Manager:
<http://www.hp.com/go/hpsim>

Typographic conventions

This document uses the following typographical conventions:

Table 10 Typographic conventions

<i>Book title</i>	The title of a book. On the web, this can be a hyperlink to the book itself.
Command	A command name or command phrase, for example <code>ls -a</code> .
Computer output	Information displayed by the computer.
Ctrl+x or Ctrl-x	A key sequence that indicates you must hold down the keyboard key labeled Ctrl while you press the letter <code>x</code> .
ENVIRONMENT VARIABLE	The name of an environment variable, for example, <code>PATH</code> .
Key	The name of a keyboard key. Return and Enter both refer to the same key.
Term	A term or phrase that is defined in the body text of the document, not in a glossary.
User input	Indicates commands and text that you type exactly as shown.
<i>Replaceable</i>	The name of a placeholder that you replace with an actual value.
[]	In command syntax statements, these characters enclose optional content.
{ }	In command syntax statements, these characters enclose required content.
	The character that separates items in a linear list of choices.
...	Indicates that the preceding element can be repeated one or more times.
WARNING	An alert that calls attention to important information that, if not understood or followed, results in personal injury.
CAUTION	An alert that calls attention to important information that, if not understood or followed, results in data loss, data corruption, or damage to hardware or software.
IMPORTANT	An alert that calls attention to essential information.
NOTE	An alert that contains additional or supplementary information.
TIP	An alert that provides helpful information.

7 Documentation feedback

HP is committed to providing documentation that meets your needs. To help us improve the documentation, send any errors, suggestions, or comments to Documentation Feedback (docsfeedback@hp.com). Include the document title and part number, version number, or the URL when submitting your feedback.

A Manually installing distribution files

If you did not copy the Windows, ESX, or Linux distribution files during the installation, you must manually copy the files for the scripted installation jobs to function properly. Manually copying the distribution files produces the same results as copying the files during the installation. To manually copy the distribution files, copy the entire contents of each distribution CD or DVD to the appropriate location \\localhost\express\hpfeatures\yyyy, where yyyy indicates operating system shortcut name.

NOTE: For SLES 10, do not copy the second DVD.

Table 11 Operating system directory names

Operating system	Directory name
Deploy ESX 4.0 U3 (EN-US)	esx40u3
Deploy ESX 4.1 U2 (EN-US)	esx41u2
Deploy ESXi 5.0 (EN-US)	esxi50
Deploy ESXi 5.0 U1(EN-US)	esxi50u1
Deploy ESXi 5.0 U2(EN-US)	esxi50u2
Deploy ESXi 5.0 U3(EN-US)	esxi50u3
Deploy ESXi 5.1 (EN-US)	esxi51
Deploy ESXi 5.1 U1 (EN-US)	esxi51u1
Deploy Hyper-V Server 2008 R2 SP1 x64 (EN-US)	hs7sp1-x64-en_us
Deploy Hyper-V Server 2008 R2 x64 (EN-US)	hs7-x64-en_us
Deploy Hyper-V Server 2008 x64 (EN-US)	hs6-x64-en_us
Deploy Hyper-V Server 2012 R2 x64 (EN-US)	hs12r2-x64-en_us
Deploy Hyper-V Server 2012 x64 (EN-US)	hs12-x64-en_us
Deploy RHEL 5.10 KVM Hypervisor x64(EN-US)	rhel510KVM-x64
Deploy RHEL 5.10 x64 (EN-US)	rhel510-x64
Deploy RHEL 5.9 KVM Hypervisor x64(EN-US)	rhel59KVM-x64
Deploy RHEL 5.9 x64 (EN-US)	rhel59-x64
Deploy RHEL 6.4 KVM Hypervisor x64(EN-US)	rhel64kvm-x64
Deploy RHEL 6.4 x64 (EN-US)	rhel64-x64
Deploy RHEL 6.5 KVM Hypervisor x64(EN-US)	rhel65kvm-x64
Deploy RHEL 6.5 x64 (EN-US)	rhel65-x64
Deploy SLES 10 SP4 x64(EN-US)	sles10sp4-x64
Deploy SLES 11 SP2 KVM Hypervisor x64 (EN-US)	sles11sp2KVM-x64
Deploy SLES 11 SP2 x64 (EN-US)	sles11sp2-x64
Deploy SLES 11 SP3 KVM Hypervisor x64 (EN-US)	sles11sp3KVM-x64
Deploy SLES 11 SP3 x64 (EN-US)	sles11sp3-x64
Deploy vSphere 5.1 U2(EN-US)	esxi51u2
Deploy vSphere 5.5 (EN-US)	esxi55

Table 11 Operating system directory names *(continued)*

Operating system	Directory name
Deploy Windows 2008 R2 SP1 x64 Enterprise (EN-US) /Standard	ws7-x64-sp1-en_us
Deploy Windows 2008 R2 x64 Enterprise (EN-US)/Standard	ws7-x64-en_us
Deploy Windows 2008 x64 Enterprise (EN-US)/Standard	ws6-x64-en_us
Deploy Windows 2008 x86 Enterprise (EN-US) /Standard	ws6-x86-en_us
Deploy Windows 2012 R2 x64 Standard (EN-US)	ws12r2-x64-en_us
Deploy Windows 2012 x64 Standard (EN-US)	ws12-x64-en_us
Deploy Windows 7 x64 Professional (EN-US)	w7-x64-pro-en_us

B Manually modifying configuration settings

Synchronize display names with computer names option

The Deployment Server can use a console display name that is different from the actual computer name. However, the console can always reflect the same name as the computer name.

To manually enable synchronization of the display and computer names:

1. In the Deployment Server Console, click **Tools>Options**.
2. Click the **Global** tab.
3. Select the **Synchronize display names with computer names**.
4. Click **OK**.

Primary lookup key option

The Deployment Server uses the primary lookup key to determine if a server exists in the database. HP recommends setting the primary lookup key as the server serial number and MAC address.

To manually set the primary lookup key to serial number and MAC address:

1. In the Deployment Server Console, click **Tools>Options**.
2. Click the **Global** tab.
3. Select Serial Number and MAC Address as the Primary lookup keys.
4. Click **OK**.

PXE initial deploy boot timeout option

By default, when a new computer (a computer not listed in the Deployment Server database) performs a PXE boot, the PXE server sends the computer the PXE menu and waits for manual selection of the Initial Deployment option. This process is not practical for servers, especially server blades with no local keyboard, mouse, or monitor.

To manually change the Initial Deploy boot option:

1. In the Deployment Server Console, click **Tools>PXE Configuration**.
2. Click the **DS** tab.
3. Select **Enable response to request from computers not in the DS Database**.
4. Select **Wait for Boot Menu default timeout before continuing with the PXE process**.
5. Click **Save**, and then click **OK**.

Client/server file transfer port option

For adlagent to properly transfer files under VMware ESX 3.x, the client/server file transfer port must be set to match the value in the supplied ESX kickstart files.

To manually set the client/server file transfer port to 4300:

1. In the Deployment Server Console, click **Tools>Options**.
2. Click the **Global** tab.
3. Select **Client/server file transfer port**, and enter 4300.
4. Click **OK**.

Windows product keys

For Windows scripted installation deployments, you must provide a Windows product key.

To manually configure the Windows product keys:

1. In the Deployment Server Console, click **Tools>Integration Module>User Tokens Editor**.
2. Add or edit the appropriate entry.
3. Click **Save**.

Table 12 User Tokens table entries

Operating system	Token name
Windows 7 x64	w7-x64-pro-en_us-productkey
Windows 2008 R2 SP1 x64 Standard	ws7-x64-sp1-std-en_us-productkey
Windows 2008 R2 SP1 x64 Enterprise	ws7-x64-sp1-ent-en_us-productkey
Windows 2008 R2 x64 Standard	ws7-x64-std-en_us-productkey
Windows 2008 R2 x64 Enterprise	ws7-x64-ent-en_us-productkey
Windows 2008 x64 Standard	ws6-x64-std-en_us-productkey
Windows 2008 x64 Enterprise	ws6-x64-ent-en_us-productkey
Windows 2008 x86 Standard	ws6-x86-std-en_us-productkey
Windows 2008 x86 Enterprise	ws6-x86-ent-en_us-productkey
Windows 2012 x64	ws12-x64-en_us-productkey
Windows 2012 R2 x64	ws12r2-x64-en_us-productkey

Free Manuals Download Website

<http://myh66.com>

<http://usermanuals.us>

<http://www.somanuals.com>

<http://www.4manuals.cc>

<http://www.manual-lib.com>

<http://www.404manual.com>

<http://www.luxmanual.com>

<http://aubethermostatmanual.com>

Golf course search by state

<http://golfingnear.com>

Email search by domain

<http://emailbydomain.com>

Auto manuals search

<http://auto.somanuals.com>

TV manuals search

<http://tv.somanuals.com>