

HP USB Network Print Adapter

User Guide



Hewlett-Packard Company notices

The information contained in this document is subject to change without notice.

All rights reserved. Reproduction, adaptation, or translation of this material is prohibited without prior written permission of Hewlett-Packard, except as allowed under copyright laws.

The only warranties for HP products and services are set forth in the express warranty statements accompanying such products and services. Nothing herein should be construed as constituting an additional warranty. HP shall not be liable for technical or editorial errors or omissions contained herein.

Regulatory model identification number

For regulatory identification purposes, your product is assigned a Regulatory Model Number. The Regulatory Model Number for your product is SDCAB-0706. This regulatory number should not be confused with the marketing name (HP USB Network Print Adapter) or product number (Q6275A).

Disposal of Waste Equipment by Users in Private Households in the European Union



This symbol on the product or on its packaging indicates that this product must not be disposed of with your other household waste. Instead, it is your responsibility to dispose of your waste equipment by handing it over to a designated collection point for the recycling of waste electrical and electronic equipment. The separate collection and recycling of your waste equipment at the time of disposal will help to conserve natural resources and ensure that it is recycled in a manner that protects human health and the environment.

For more information about where you can drop off your waste equipment for recycling, please contact your local city office, your household waste disposal service or the shop where you purchased the product.

有毒有害物质表						
根据中国《电子信息产品污染控制管理办法》						
零件描述	有毒有害物质和元素					
	铅	汞	镉	六价铬	多溴联苯	多溴联苯醚
外壳和托盘*	0	0	0	0	0	0
电线*	0	0	0	0	0	0
印刷电路板*	X	0	0	0	0	0
外部电源*	X	0	0	0	0	0

0: 指此部件的所有均一材质中包含的这种有毒有害物质, 含量低于SJ/T11363-2006的限制
X: 指此部件使用的均一材质中至少有一种包含的这种有毒有害物质, 含量高于SJ/T11363-2006的限制
注: 环保使用期限的参考标识取决于产品正常工作的温度和湿度等条件
*以上只适用于使用这些部件的产品

Contents

1 Welcome	
Contents of the package	5
Lights and ports of the print adapter	6
2 Basic setup	
Connect the print adapter	7
Install the Network Print Adapter software	7
Install the printer software and connect to the printer	7
Install the printer software	8
Connect to the printer using Connection Manager	8
3 Using the USB Network Print Adapter	
Use the Connection Manager	9
Connection Manager icons	9
Cancel a print job	9
Change printers	9
Restart the Connection Manager	9
Use Advanced Setup	10
.	10
4 Troubleshooting	
Cannot detect Network Print Adapter during installation	11
Can print from most software applications, but the HP software (HP Director or HP Solution Center) does not seem to work (cannot scan or read memory cards)	11
Installation completed but still cannot print	11
When using Advanced Setup, my Network Print Adapter does not show up in the list	12
5 Technical information	
Specifications	13
Environmental product stewardship program	13
Protecting the environment	13
Plastics	13
Material safety data sheets	13
Hardware recycling program	13
Limited warranty statement	14
FCC statement	15
European Union Regulatory Notice	16
Notice to users in Korea	16
Notice to users in Japan	16
Notice to users in China	16
Declaration of Conformity	17

1 Welcome

Congratulations on the purchase of your HP USB Network Print Adapter (network print adapter). The network print adapter was designed to provide a simple and efficient solution for connecting to your HP printer or all-in-one to your Ethernet network. With supported HP printers, you can print using the network print adapter and with all-in-one devices you can print, scan, copy, and fax (if your device has fax capability).

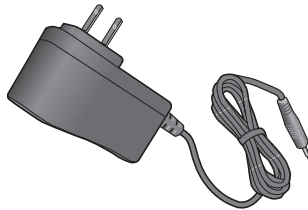
Contents of the package

The package includes the following items.

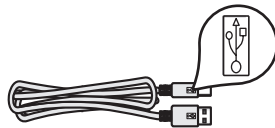
1 Print adapter



2 Power cord for print adapter



3 USB cable



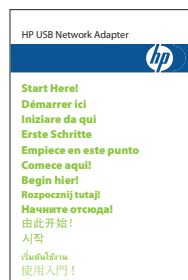
4 Ethernet cable



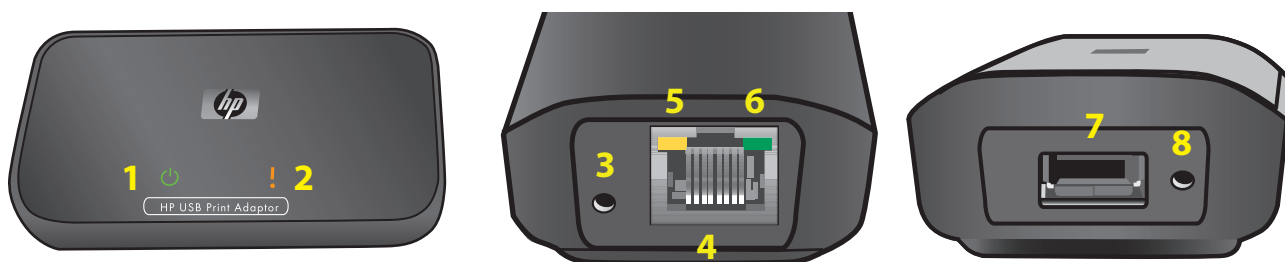
5 HP USB Network Adapter CD



6 Quick Start Guide



Lights and ports of the print adapter



- | | | |
|---|--|---|
| <p>1 Power light (green)</p> <p>2 Attention light (amber)</p> | <p>3 Power connector</p> <p>4 Ethernet port</p> <p>5 Ethernet activity light (yellow)</p> <p>6 Ethernet link light (green)</p> | <p>7 USB port</p> <p>8 Reset button</p> |
|---|--|---|

The meanings of the patterns of the lights are as follows.

	Power	Attention
Power Off	Off	Off
Power On	On	Off
Ready	On	Off
Data transmitting	On	Off
No USB connected	On	Blinking
No Ethernet connected	On	Off
Error	On	On

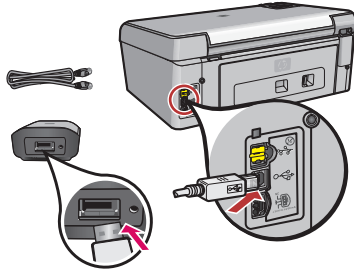
	Activity (yellow)	Link (green)
No network connection / No power	Off	Off
Power On	Off	On
Data transmitting	Blinking	On

2 Basic setup

If you misplace your Quick Start Guide, you can use these instructions to initially set up your Network Print Adapter.

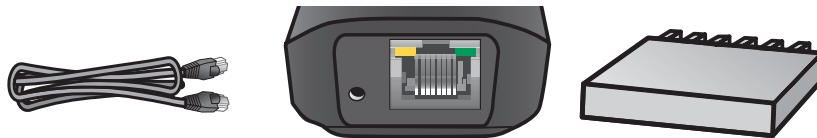
Connect the print adapter

1. Turn off the HP printer.
2. Use the USB cable to attach the print adapter to the USB port on the BACK of your HP printer.



IMPORTANT: If your printer has a USB port on the front, do not attach the print adapter to it. Use the back USB port.

3. Plug in the Ethernet cable to the print adapter and the hub or router.



4. Plug in the power cord to the print adapter and the power outlet and verify that the power light comes on.
5. Turn the printer on.

Install the Network Print Adapter software

NOTE: Select **Always Allow** to any dialogs that display from your firewall software.

1. Close all other software programs, especially HP software such as the HP Solution Center or HP Director.
2. Insert the HP USB Network Print Adapter CD.
3. Click **Install** to install the software.
4. Accept the license agreement.
5. If you haven't already connected the Print Adapter and turned on the printer, do so now.
6. Select your Network Print Adapter from the list and click **Next**.
The files begin to copy.
A window displays showing the printer that has been found.
7. Click **Finish** to complete the installation.

TIP: Leave the "For best results, allow all users full printer access." box checked. If this box is unchecked, only an administrator can restart the printer if it pauses due to being out of paper or other causes.

Install the printer software and connect to the printer

If the printer software is already installed on this computer, go to "Connect to the printer using Connection Manager".
If you need to install the printer software use the directions immediately following.

Install the printer software

Leave your printer attached to the USB Network Printer Adapter.

1. Insert the printer software CD or start the downloaded driver installation.
2. When the software asks you to plug in the USB cable, do the following:
 - a. Right-click the Connection Manager icon in the system tray (lower-right corner of your screen).



- b. Select **Connect**.
After a few moments, the icon will change to show a successful connection.



Connect to the printer using Connection Manager

If you already have the printer software installed on this computer follow these instructions.

1. Right-click the Connection Manager icon in the system tray (lower-right corner of your screen).



2. Click **Connect**.
After a few moments, the icon will change to show a successful connection.



3 Using the USB Network Print Adapter

For most everyday tasks, you will use your printer or all-in-one device just like you always have. Occasionally you may want to use the Connection Manager or Advanced Setup utility.




Use the Connection Manager

You can use the Connection Manager icon in the System Tray (lower-right corner of your screen) to perform the following tasks.

- Check the status.
- Change printers.
- Access the Print Queue.
- Connect or Disconnect.

Connection Manager icons

The Connection Manager has a number of icons to tell you the status of the Network Print Adapter. The three common ones are described below.

	The printer or all-in-one device is connected and ready to use.
	The Network Print Adapter can detect the printer or all-in-one but it is not currently connected. The device will be automatically reconnected if a print job is sent. If you want to scan or use the memory card slots, for example, you will need to manually reconnect the device. ▲ To manually reconnect, right-click the icon and select Connect .
	The Network Print Adapter cannot detect the printer. Check to see if all cables are connected between the adapter and printer and that both plugged in and have power.

Cancel a print job

Use the **Print Queue** to cancel or pause a print job. If you get a message that the print job has failed, you should cancel the job to delete it from the print queue.

1. Right-click the Connection Manager icon and select **Print Queue**.
2. Right-click the print job in the Print Manager and select **Cancel**.

Change printers

If you have more than one printer using a USB Network Print Adapter on your network, you can change the printer that your computer is connected to.

1. Right-click the Connection Manager icon and select **Select Printer...**
2. Select a different printer and click **Select**.

Restart the Connection Manager

If the icon does not appear in the system tray, you need to restart the Connection Manager.

- ▲ Go to **Start --> All Programs --> HP USB Network Print Adapter--> Restart connection manager**.

Use Advanced Setup

The Advanced Setup screen allows you to discover your IP and Mac addresses and, if necessary for your network, manually change the IP address.

- 1 Go to **Start --> All Programs --> HP USB Network Print Adapter--> Advanced Setup**
The IP and MAC addresses of all network print adapters on your network will display.
- 2 Select the adapter and click **Next**.
The **IP Address Setting** screen will display.
- 3 Choose one of the following.
 - a. Select **Obtain IP Address automatically** if you have a DHCP server on your LAN
 - b. Click **Next**.
OR
 - a. If you do not have a DHCP server on your LAN, you must select **Use the following IP Address**.
 - b. Either accept the suggested IP address or enter a new one.
The IP Subnet Mask and Default Gateway must match your LAN and will be filled in for you.
 - c. Click **Next**.
3. Confirm your IP settings and click **Apply**.
 - Click Back to go to the previous screen and change the IP address.
 - Click Cancel to exit without making any changes.

4 Troubleshooting

Cannot detect Network Print Adapter during installation.

Cause

Either the printer or Network Print Adapter has no power or a cable is unplugged.

Solution

Check the power cords and cables between the devices and the network.

Cause

In a corporate environment, the firewall may be configured to never allow access and may not give any messages.

Solution

Consult with your IT department and ask them to grant access to the Network Print Adapter.

Cause

Your Network Print Adapter is on a different subnet.

Solution

The Network Print Adapter must be on the same subnet as your computer. Move the Network Print Adapter.

Can print from most software applications, but the HP software (HP Director or HP Solution Center) does not seem to work (cannot scan or read memory cards)

Cause

The wrong printer instance is selected in the HP software.

Solution

If you had previously installed the printer on this computer, a second instance of your printer was created when the Network Printer Adapter software was installed. You now have, for example, HP Deskjet 5940 and HP Deskjet 5940 (copy 1). Make sure the new version of the printer is selected in the HP software. Check the online help for the HP Director or the HP Solution center for instructions on selecting the printer.

Cause

This is a known problem with some older HP drivers for All-in-Ones.

Solution

If you are not having problems printing, we recommend that you use Windows or other applications for scanning and reading memory cards.

1. Open **My Computer**.

Under **Name** you will see listings for the scanner and memory card slots (if your device has them).

For example, if you have an HP Officejet 7310, you will have the following devices listed.

7310 Memory (E:)	Removable Disk
HP Officejet 7300 series...	Image scanner

With some printers, the memory card slot may simply be named "Removable Disk".

2. To access images on a memory card, double-click the device memory name (for example, 7310 Memory).

The images will be displayed as if it was a disk drive.

3. To scan using the Windows applications, right-click the name next to "Image scanner" (for example, HP Officejet 7300 series...) and select **Scan**.

Installation completed but still cannot print

Cause

Connection between Network Print Adapter and network has not been established.

Solution

Check the Print Adapter icon in the System Tray. If it does not have a green checkmark, then the connection has been lost.

- 1 Right-click the Network Print Adapter icon in the System Tray.
- 2 Select **Connect**.

If that does not work after a minute or so, then try exiting the Connection Manager and starting it again.

1. Right-click the Print Adapter icon in the System Tray.
2. Select **Exit**.
3. Go to **Start --> All Programs --> HP USB Network Print Adapter-->Restart connection manager**.

Cause

Printer software is very old or not completely installed.

Solution

1. Verify that you can print using a USB cable.
2. Download the latest printer driver from www.hp.com/support and install all components.

When using Advanced Setup, my Network Print Adapter does not show up in the list

Cause

You have an authenticated network in an Enterprise environment.

Solution

The product was designed for a small network environment where you can control all the settings.

If you have that type of small network, verify that you have all the settings recorded correctly.

5 Technical information

This chapter contains technical information, regulatory information, and environmental information about your USB Network Print Adapter.

Specifications

General	Environmental
<ul style="list-style-type: none">EthernetPrint Adapter: USB 2.0	<ul style="list-style-type: none">Operating Temperature: 0° C – 40° CStorage Temperature: –20° C – 70° COperating Humidity: 10 – 85% RHStorage Humidity: 5 – 90% RH
Power Consumption 3.3 V at 550 mA	

Environmental product stewardship program

This section provides information on protecting the environment; ozone production; energy consumption; paper use; plastics; material safety data sheets; and recycling programs.

This section contains information about environmental standards.

Protecting the environment

Hewlett-Packard is committed to providing quality products in an environmentally sound manner. This product has been designed with several attributes to minimize impacts on our environment.

For more information, visit HP's Commitment to the Environment website at:

www.hp.com/hpinfo/globalcitizenship/environment/index.html

Plastics

Plastic parts over 25 grams are marked according to international standards that enhance the ability to identify plastics for recycling purposes at the end of the product's life.

Material safety data sheets

Material safety data sheets (MSDS) can be obtained from the HP website at:

www.hp.com/go/msds

Customers without Internet access should contact their local HP Customer Care Center.

Hardware recycling program

HP offers an increasing number of product return and recycling programs in many countries, as well as partnering with some of the largest electronic recycling centers throughout the world. HP also conserves resources by refurbishing and reselling some of its most popular products.

For information regarding recycling of HP products, please visit: www.hp.com/recycle.

For assistance, call 1-800-HP-INVENT (North America only) or go to the Customer Care website at www.hp.com/support.

Limited warranty statement

HP product	Duration of limited warranty
Accessories	One year
Software	One year

- A. Extent of limited warranty
1. Hewlett-Packard (HP) warrants to the end-user customer that the HP products specified above will be free from defects in materials and workmanship for the duration specified above, which duration begins on the date of purchase by the customer.
 2. For software products, HP's limited warranty applies only to a failure to execute programming instructions. HP does not warrant that the operation of any product will be uninterrupted or error free.
 3. HP's limited warranty covers only those defects that arise as a result of normal use of the product, and does not cover any other problems, including those that arise as a result of:
 - a. Improper maintenance or modification;
 - b. Software, media, parts, or supplies not provided or supported by HP;
 - c. Operation outside the product's specifications;
 - d. Unauthorized modification or misuse.
 4. For HP printer products, the use of a non-HP ink cartridge or a refilled ink cartridge does not affect either the warranty to the customer or any HP support contract with the customer. However, if printer failure or damage is attributable to the use of a non-HP or refilled ink cartridge, HP will charge its standard time and materials charges to service the printer for the particular failure or damage.
 5. If HP receives, during the applicable warranty period, notice of a defect in any product which is covered by HP's warranty, HP shall either repair or replace the product, at HP's option.
 6. If HP is unable to repair or replace, as applicable, a defective product which is covered by HP's warranty, HP shall, within a reasonable time after being notified of the defect, refund the purchase price for the product.
 7. HP shall have no obligation to repair, replace, or refund until the customer returns the defective product to HP.
 8. Any replacement product may be either new or like-new, provided that it has functionality at least equal to that of the product being replaced.
 9. HP products may contain remanufactured parts, components, or materials equivalent to new in performance.
 10. HP's Limited Warranty Statement is valid in any country where the covered HP product is distributed by HP. Contracts for additional warranty services, such as on-site service, may be available from any authorized HP service facility in countries where the product is distributed by HP or by an authorized importer.
- B. Limitations of warranty
TO THE EXTENT ALLOWED BY LOCAL LAW, NEITHER HP NOR ITS THIRD PARTY SUPPLIERS MAKES ANY OTHER WARRANTY OR CONDITION OF ANY KIND, WHETHER EXPRESS OR IMPLIED WARRANTIES OR CONDITIONS OF MERCHANTABILITY, SATISFACTORY QUALITY, AND FITNESS FOR A PARTICULAR PURPOSE.
- C. Limitations of liability
1. To the extent allowed by local law, the remedies provided in this Warranty Statement are the customer's sole and exclusive remedies.
 2. TO THE EXTENT ALLOWED BY LOCAL LAW, EXCEPT FOR THE OBLIGATIONS SPECIFICALLY SET FORTH IN THIS WARRANTY STATEMENT, IN NO EVENT SHALL HP OR ITS THIRD PARTY SUPPLIERS BE LIABLE FOR DIRECT, INDIRECT, SPECIAL, INCIDENTAL, OR CONSEQUENTIAL DAMAGES, WHETHER BASED ON CONTRACT, TORT, OR ANY OTHER LEGAL THEORY AND WHETHER ADVISED OF THE POSSIBILITY OF SUCH DAMAGES.
- D. Local law
1. This Warranty Statement gives the customer specific legal rights. The customer may also have other rights which vary from state to state in the United States, from province to province in Canada, and from country to country elsewhere in the world.
 2. To the extent that this Warranty Statement is inconsistent with local law, this Warranty Statement shall be deemed modified to be consistent with such local law. Under such local law, certain disclaimers and limitations of this Warranty Statement may not apply to the customer. For example, some states in the United States, as well as some governments outside the United States (including provinces in Canada), may:
 - a. Preclude the disclaimers and limitations in this Warranty Statement from limiting the statutory rights of a consumer (e.g., the United Kingdom);
 - b. Otherwise restrict the ability of a manufacturer to enforce such disclaimers or limitations; or
 - c. Grant the customer additional warranty rights, specify the duration of implied warranties which the manufacturer cannot disclaim, or allow limitations on the duration of implied warranties.
 3. You may have additional statutory rights against the seller based on your purchase agreement. Those rights are not in any way affected by this Warranty Statement.
 4. THE TERMS IN THIS WARRANTY STATEMENT, EXCEPT TO THE EXTENT LAWFULLY PERMITTED, DO NOT EXCLUDE, RESTRICT, OR MODIFY, AND ARE IN ADDITION TO, THE MANDATORY STATUTORY RIGHTS APPLICABLE TO THE SALE OF THE HP PRODUCTS TO SUCH CUSTOMERS.

HP Limited Warranty

Dear Customer,

You will find below the name and address of the HP entity responsible for the performance of the HP Limited Warranty in your country.

You may have additional statutory rights against the seller based on your purchase agreement. Those rights are not in any way affected by this HP Limited Warranty.

Ireland: Hewlett-Packard Ireland Ltd. 30 Herbert Street IRL-Dublin 2

United Kingdom: Hewlett-Packard Ltd, Cain Road, Bracknell, GB-Berks RG12 1HN

FCC statement

The United States Federal Communications Commission (in 47 CFR 15.105) has specified that the following notice be brought to the attention of users of this product.

This equipment has been tested and found to comply with the limits for a Class B digital device, pursuant to Part 15 of the FCC Rules. These limits are designed to provide reasonable protection against harmful interference in a residential installation. This equipment generates, uses and can radiate radio frequency energy and, if not installed and used in accordance with the instructions, may cause harmful interference to radio communications. However, there is no guarantee that interference will not occur in a particular installation. If this equipment does cause harmful interference to radio or television reception, which can be determined by turning the equipment off and on, the user is encouraged to try to correct the interference by one or more of the following measures:

- Reorient the receiving antenna.
- Increase the separation between the equipment and the receiver.
- Connect the equipment into an outlet on a circuit different from that to which the receiver is connected.
- Consult the dealer or an experienced radio/TV technician for help.

This device complies with part 15 of the FCC Rules. Operation is subject to the following two conditions: (1) This device may not cause harmful interference, and (2) this device must accept any interference received, including interference that may cause undesired operation.

For further information, contact:

Manager of Corporate Product Regulations
Hewlett-Packard Company
3000 Hanover Street
Palo Alto, Ca 94304
(650) 857-1501

European Union Regulatory Notice

Products bearing the CE marking comply with the following EU Directives:

- Low Voltage Directive 73/23/EEC
- EMC Directive 89/336/EEC CE compliance of this product is valid only if powered with the correct CE-marked AC adapter provided by HP. If this product has telecommunications functionality, it also complies with the essential requirements of the following EU Directive:
- R&TTE Directive 1999/5/EC

Compliance with these directives implies conformity to harmonized European standards (European Norms) that are listed in the EU Declaration of Conformity issued by HP for this product or product family. This compliance is indicated by the following conformity marking placed on the product.



Notice to users in Korea

A급 기기 (업무용 정보통신기기)

이 기기는 업무용으로 전자파적합등록을 한 기기이오니 판매자 또는 사용자는 이 점을 주의하시기 바라며, 만약 잘못판매 또는 구입하였을 때에는 가정용으로 교환하시기 바랍니다.

Notice to users in Japan

この装置は、情報処理装置等電波障害自主規制協議会 (VCCI) の基準に基づくクラス B 情報技術装置です。この装置は、家庭環境で使用することを目的としていますが、この装置がラジオやテレビジョン受信機に近接して使用されると受信障害を引き起こすことがあります。

取り扱い説明書に従って正しい取り扱いをして下さい。



DECLARATION OF CONFORMITY

according to ISO/IEC 17050-1 and EN 17050-1

DoC #: SDCAB-0706-1

Supplier's Name: Hewlett-Packard Company
Supplier's Address: 8000 Foothills Blvd. Roseville, CA

declares, that the product

Product Name and Model: HP USB Network Print Adapter, Q6275A

Regulatory Model Number: ¹⁾ SDCAB-0706

Product Options: All

conforms to the following Product Specifications and Regulations:

EMC: Class B

EN55024: 1998+A1:2001+A2:2003

EN 55022:1998 + A1:2000 + A2:2003

EN 61000-3-2:2000 + A2:2005

EN 61000-3-3:1995 + A1:2001

FCC CFR 47 Part 15

Safety:

EN 60950-1:2001

This device complies with part 15 of the FCC Rules. Operation is subject to the following two conditions: (1) This device may not cause harmful interference, and (2) this device must accept any interference received, including interference that may cause undesired operation.

The product herewith complies with the requirements of the Low Voltage Directive 2006/95/EC, the EMC Directive 2004/108/EC and carries the CE-marking accordingly.

Additional Information:

- 1) This product is assigned a Regulatory Model Number which stays with the regulatory aspects of the design. The Regulatory Model Number is the main product identifier in the regulatory documentation and test reports, this number should not be confused with the marketing name or the product numbers.

Roseville May 14,
2007

Steve Ortmann, Manager
IPG Connectivity

Local contact for regulatory topics only:

EMEA: Hewlett-Packard GmbH, HQ-TRE, Herrenberger Strasse 140, 71034 Boeblingen, Germany

U.S.: Hewlett-Packard, 3000 Hanover St., Palo Alto 94304, U.S.A. 650-857-1501

www.hp.com/go/certificates

Free Manuals Download Website

<http://myh66.com>

<http://usermanuals.us>

<http://www.somanuals.com>

<http://www.4manuals.cc>

<http://www.manual-lib.com>

<http://www.404manual.com>

<http://www.luxmanual.com>

<http://aubethermostatmanual.com>

Golf course search by state

<http://golfingnear.com>

Email search by domain

<http://emailbydomain.com>

Auto manuals search

<http://auto.somanuals.com>

TV manuals search

<http://tv.somanuals.com>